

PC 3672  
PAGE 2

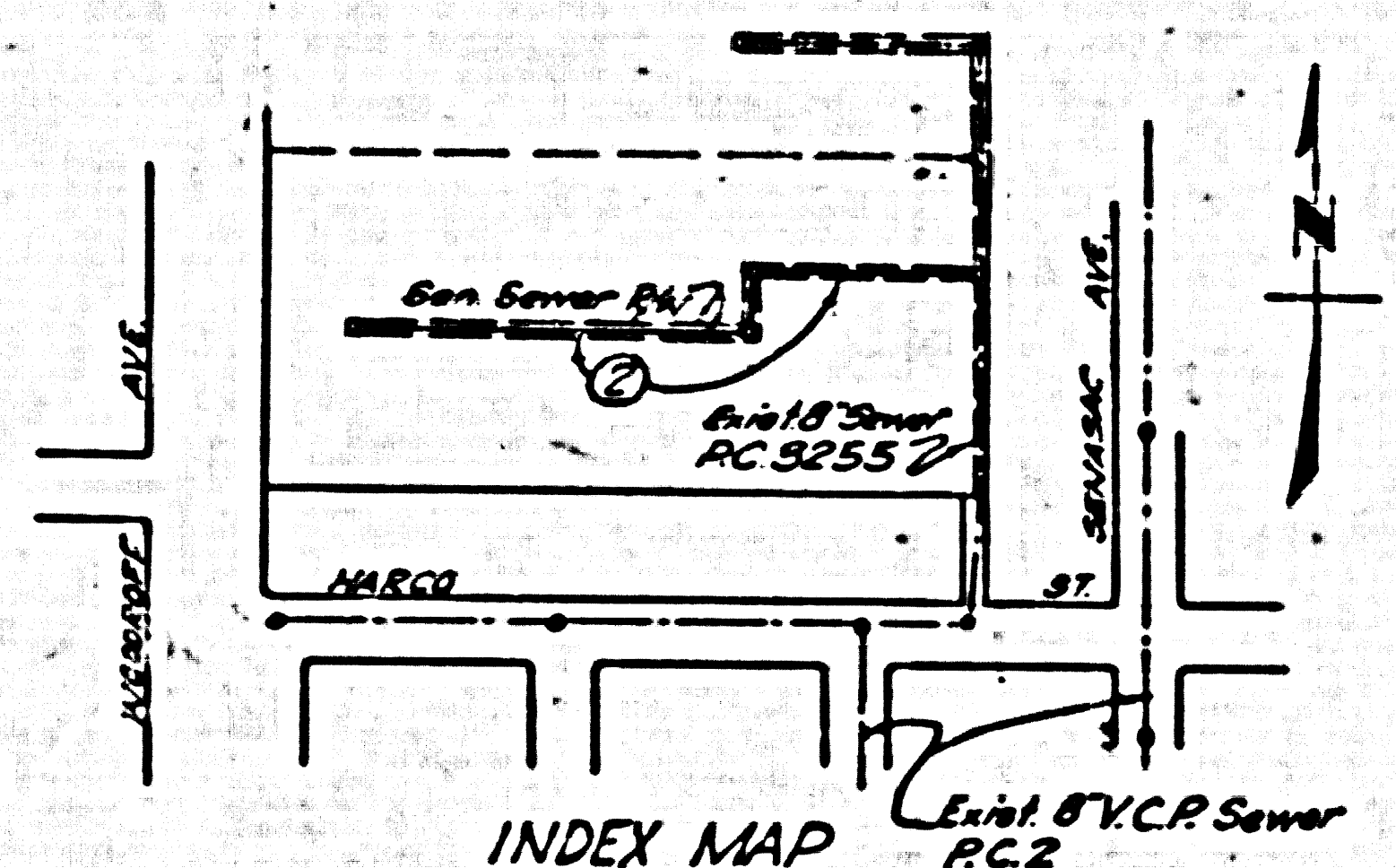
21,950

NO CHARGE FOR  
REVISIONS

B.M. SY 2691 El. 41682  
L & T in W. curb Woodruff Ave. 17N  
of curb ret. at N.W. cor. of  
Woodruff Ave. & Harco St.

### BELFLOWER BLDG. DIST. N° 4

- NOTE:**
- Provide stakes on the property lines or property lines produced at right angles to the cover line of the center line of each manhole.
- No representative of the County Engineer will survey or layout any portion of the work.
- The owner or his authorized representative shall furnish the County Engineer with grade sheets and stations for all house laterals and Y branches and shall provide stakes for those at their proper locations with stationing plainly marked. Any change in location shall be requested in writing by the owner or his representative.
- No revisions shall be made to these plans without the approval of the County Engineer.
1. Use standard manhole frames and covers, S-o-117.
  2. Use standard strength pipe except as noted.
  3. Use cement mortar for all vitrified clay pipe joints.
  4. Securement all trench within paved area to meet L. A. County Road Dept. or California State Highway Dept. requirements in accordance with paragraph.
  5. Excavate four feet of cover at points of interference with poles, S-o-115.
  6. All structures shall be brick sewer structures, S-o-104.
  7. For allowable leakage test, see Formula No. 1, Spec'n, Sec. 51.
  8. Manhole tops in unimproved Right-Of-Way to be level with ground surface.



INDEX MAP  
P.C. 3672  
SCALE: 1/4\"/>

SHEET	PAGES
1	1-2

NO CHARGE FOR  
CONNECTIONS

Checked 12-16-55 McLaren

Trim Line

PROFILE, ALIGNMENT AND GRADE OF  
SANITARY SEWERS  
TO BE CONSTRUCTED IN  
SANITARY SEWER R/W  
NORTH OF HARCO STREET

PC 3672  
PAGE 1

21,949

PRIVATE CONTRACT NO. 3672  
W. S. 51  
ONE SHEET

Scale: VERT. 1"=4'  
HORIZ. 1"=40'  
SEPT. 1955  
PREPARED IN THE OFFICES OF  
OLSON SURVEYING SERVICE

FOR LEGEND SEE PLAN NO. S-o-64

**NOTE:**

Grades to which this improvement is to be constructed are shown on plans and profiles. Grade points for top of curb, center line of street, or center line of alley are shown by circles on profiles. At all points between designated points the grade shall be established so as to conform to a straight line drawn between said designated points.

Structures are in feet above U.S.C.S. datum or mean sea level.

This drawing and the data hereon are hereby made a part of the specifications.

Work shall be constructed according to specifications on file in the office of the County Engineer and shall be prosecuted only in the presence of the County Engineer.

Before work can be started, the contractor must obtain a permit to excavate by County check from the L.A. County Road Dept., 100 W. 2nd St. and make a deposit with the County Engineer, Room 510, 250 So. Broadway, sufficient to cover the cost of construction inspection and record plan.

Approval of this plan by the County of Los Angeles does not constitute a representation as to the accuracy of the location of or the existence or non-existence of any underground utility, pipe, or structure within the limits of this project. This note applies to all sheets.

If work is to be done in a State Highway, a permit must be obtained from the State of California, Division of Highways, 120 South Spring Street.

COUNTY OF LOS ANGELES, CALIFORNIA

Approved, John A. Larkin, County Engineer  
BY: *A.P. Collins*  
District Engineer

Approved, A. M. Bove  
CHIEF ENGINEER DIST. NO. 5  
BY: *A.P. Collins*  
District Engineer

Checked by: *R.H. ...*  
Office of County Engineer, P.O. Box 7862.

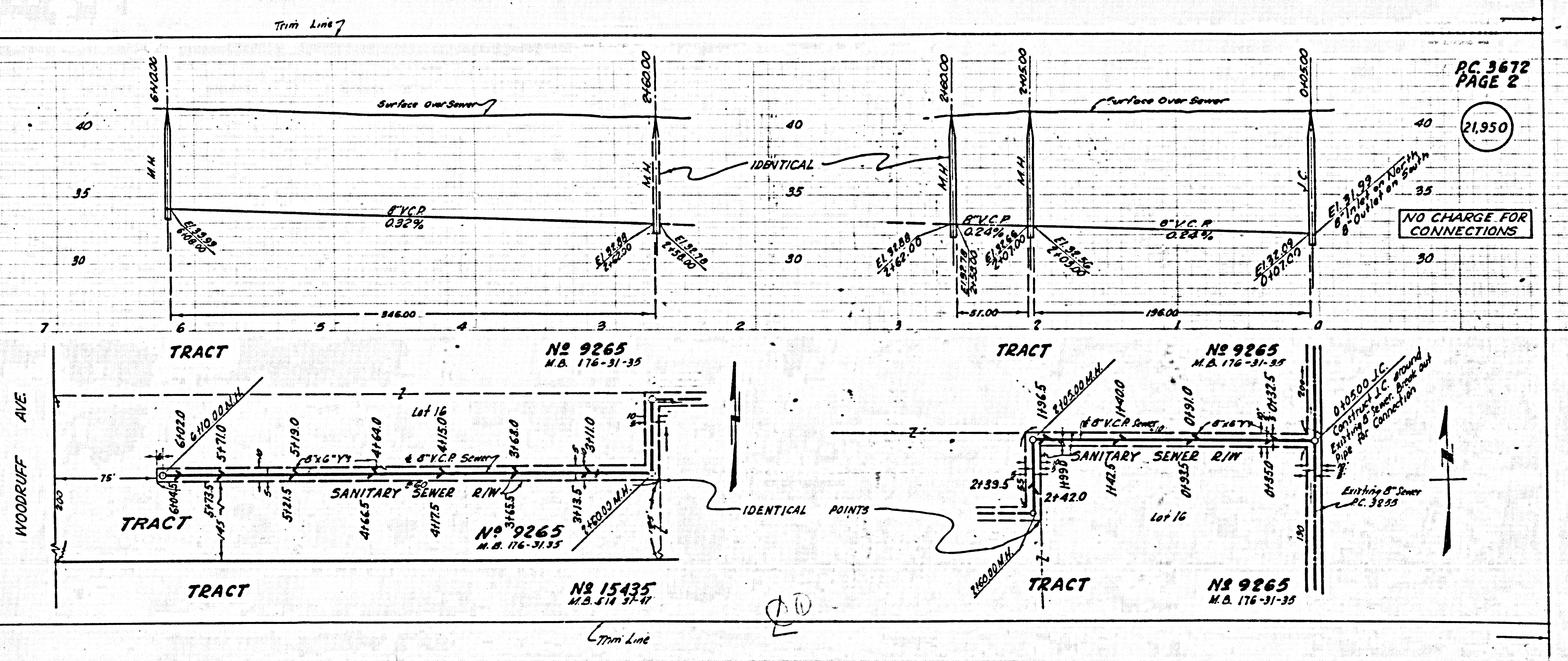
RAW NORTH OF HARCO ST.

PC 3672  
PAGE 1

Trim Line

21,941

PC 3672



PC 3672  
PAGE 2

21,950

NO CHARGE FOR CONNECTIONS

No 9265  
M.B. 176-31-35

No 9265  
M.B. 176-31-35

No 9265  
M.B. 176-31-35

No 15435  
M.B. 514 57-41

WOODRUFF AVE

Trim Line

