

Trim Line
WHITTIER BLDG. DIST. No 11

PART OF
 PAGE 1
 P.C. 3682

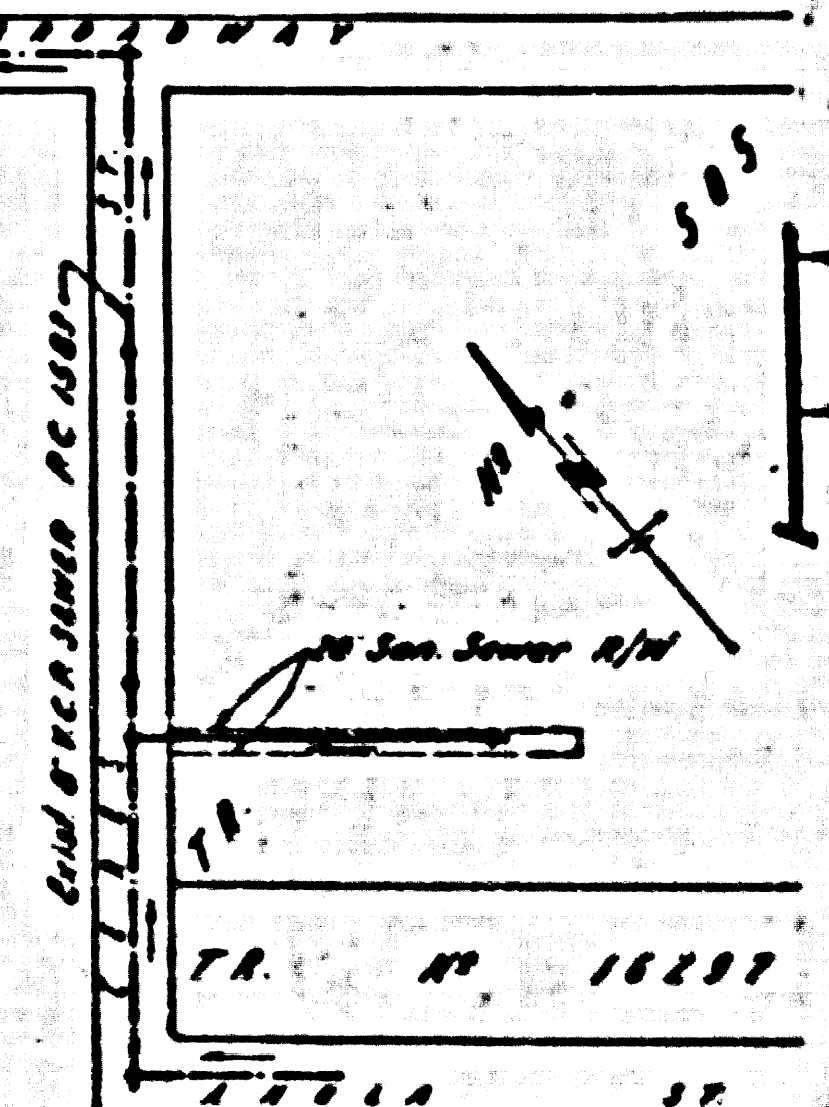
- NOTE:**
 Provide stakes on the property lines or property lines produced at right angles to the center line of the sewer line of each manhole.
 No representative of the County Engineer will survey or layout any portion of the work.
 The owner or his authorized representative shall furnish the County Engineer with grade sheets and stations for all house laterals and T branches and shall provide stakes for them at their proper locations with stationing plainly marked. Any change in location shall be requested in writing by the owner or his representative.
 No revisions shall be made in these plans without the approval of the County Engineer.
1. Use standard manhole frames and covers, S-117.
 2. Use standard strength pipe except as noted.
 3. Use cement mortar for all vitrified clay pipe joints.
 4. Surfacing all trench within paved area to meet L. A. County Road Dept. or California State Highway Dept. requirements in accordance with permit.
 5. Excavate four feet of cover at points of interference with poles, S-119.
 6. House laterals to be constructed with joints at property line. Joint below each grade except as noted.
 7. All structures shall be brick sewer structures, S-104.
 8. For allowable leakage test, see Formula No. 1, Spec'n. Sec. 81.
 9. Manhole tops in unimproved Right-of-Way to be 6" above finish grade.
 10. House laterals to be constructed with 1/2" rise per foot to Right of Way Line.

**PROFILE, ALIGNMENT AND GRADE OF
 SANITARY SEWERS
 TO BE CONSTRUCTED IN
 R/W. NORTH OF ANOLA ST.**

P.C. 3682
 PAGE 1
 21,953

PRIVATE CONTRACT NO. 3682
 W. S. 34
 1 SHEET

Scale: VERT. 1"=4' HORIZ. 1"=40' SEPT-1955
 PREPARED IN THE OFFICES OF
KEMMERER ENGINEERING CO. INC.
John C. Kemmerer
 REGISTERED PROFESSIONAL ENGINEER
 FOR LEGEND SEE PLAN NO. S-6-44



NO CHARGE FOR
 CONNECTIONS
 L. Curtis 12-15-55

SHEET NO. 1 PAGES 1

INDEX MAP
 Scale: 1"=100' P.C. 3682
 checked 12-28-55 *McLaren*

NOTE:
 Grades to which this improvement is to be constructed are shown on plans and profiles. Grade points for top of curb, center line of streets, or center line of alleys are shown by elevations on profiles. At all points between designated points the grade shall be established so as to conform to a straight line between said designated points.
 Elevations are to feet above U.S.C. F.G.S. sea level datum of 1929.
 This drawing and the data herein are hereby made a part of the specifications.
 Work shall be constructed according to specifications on file in the office of the County Engineer and shall be presented only in the presence of the County Engineer.
 Before work can be started, the contractor must obtain a permit to excavate in County streets from the L.A. County Road Dept., 100 W. 2nd St. and make or deposit with the County Engineer, Room 318, 255 S. Broadway, sufficient to cover the cost of construction inspection and record plans.
 Approval of this plan by the County of Los Angeles does not constitute a representation as to the accuracy of the location of or the existence or non-existence of any underground utility, pipe, or structure within the limits of this project. This note applies to all sheets.
 If work is to be done in a State Highway, a permit must be obtained from the State of California, Division of Highways, 120 South Spring Street.

COUNTY OF LOS ANGELES, CALIFORNIA

Approved, John A. Lambie County Engineer
A. P. Collins
 Surveyor

Approved, A. M. Davis
 CHIEF ENGINEER, SAN DIST. NO. 11
W. L. Postman
 Office Engineer

Checked by: *Rephel* 12-25-55
 Office of County Engineer, Reg. C. E. No. 3660

P.C. 3682

P.C. 3682
 R/W NORTH OF ANOLA ST.