

PC. 3683

PAGE 2

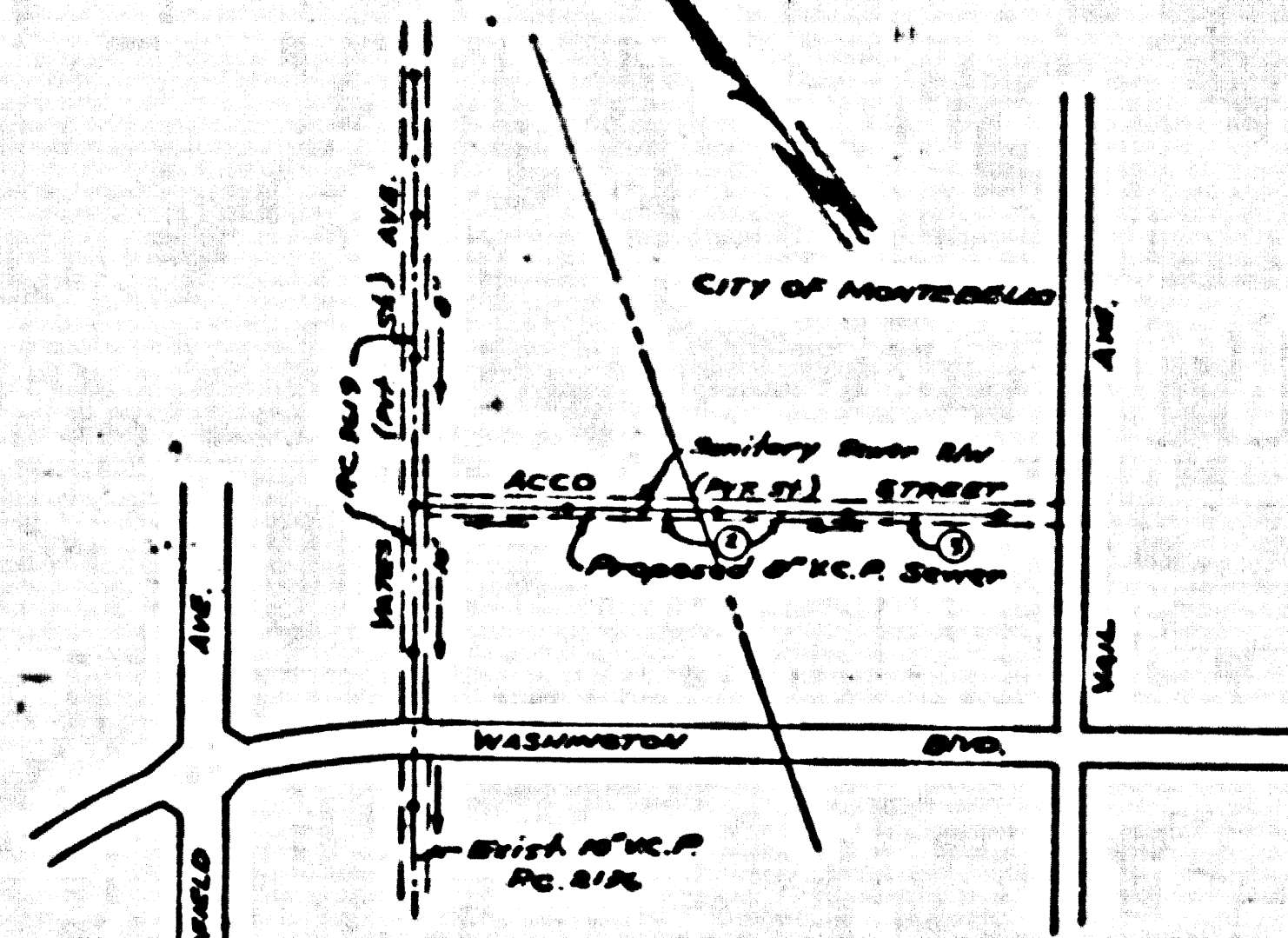
23,168

NO CHARGE FOR CONNECTIONS

VIA

See Page 1

B.M. No. 2A (L.O. 500, PG. 24)
Monument 3799' North of Sta.
26+56.70, 12' deep on Washington
Blvd. No. of Telegraph Rd. (So. edge)
E.L. 160.675



NO CHARGE FOR CONNECTIONS
- 24' Under 1-2-56

INDEX MAP
SCALE: 1" = 500'
PC. 3683

EAST LOS ANGELES BLDG. DIST. NO. 6

- NOTE:**
- Provide stakes on the property lines or property lines produced at right angles to the sewer line at the center line of each manhole.
- No representative of the County Engineer will survey or layout any portion of the work.
- The owner or his authorized representative shall furnish the County Engineer with grade sheets and stations for all house laterals and 'Y' branches and shall provide stakes for them at their proper locations with stationing plainly marked. Any change in location shall be requested in writing by the owner or his representative.
- No revisions shall be made in these plans without the approval of the County Engineer.
1. Use standard manhole frames and covers, S-a-117.
 2. Use standard strength pipe except as noted.
 3. Use cement mortar for all vitrified clay pipe joints.
 4. Resurface all trench within paved area to meet L.A. County Road Dept or California State Highway Dept. requirements in accordance with permit.
 5. Encase four feet of sewer at points of interference with poles, S-a-119.
 6. House laterals to be constructed with inverts at property line _____ feet below curb grade - except as noted.
 7. All structures shall be brick sewer structures, S-a-104.
 8. For allowable leakage test, use Formula No. _____ Spec's, Sec. 51.
 9. Manhole tops in Improved Rights-Of-Way to be level with finish grade.

UTILITIES:
It shall be the responsibility of the contractor to locate all utilities of every nature, whether shown herein or not, and protect them from damage. The contractor shall bear the total expense of repair or replacement of said utilities damaged by operations in connection with the construction of the work.

SHEET	PAGE
1	1-9

CITY OF MONTEBELLO
APPROVED: _____ DATE: 7-31-56
City Engineer, City of Montebello
C.B. 7830

Order 7-31-56 *McL...*

PROFILE, ALIGNMENT AND GRADE OF
SANITARY SEWERS
TO BE CONSTRUCTED IN
ACCO STREET
(PRIVATE ST.)

PRIVATE CONTRACT NO. 3683
W. S. 36
ONE SHEET
AUG, 1955

Scale: VERT. 1" = 4'
HORIZ. 1" = 40'

PREPARED IN THE OFFICES OF

FOR LEGEND SEE PLAN NO. S-a-64

NOTE:

Grades to which this improvement is to be constructed are shown on plans and profiles. Grade points for top of curb, center line of streets, or center line of alleys are shown by circles on profiles. At all points between designated points the grade shall be established so as to conform to a straight line drawn between said designated points.

Elevations are in feet above U.S.C. & G.S. sea level datum of 1929.

This drawing and the data hereon are hereby made a part of the specifications.

Work shall be constructed according to specifications on file in the office of the County Engineer and shall be prosecuted only in the presence of the County Engineer.

Before work can be started, the contractor must obtain a permit to occupy in County streets from the L.A. County Road Dept., 108 W. 2nd St. and make a deposit with the County Engineer, Room 208, Post-Office Bldg., 299 1/2 Broadway sufficient to cover the cost of construction inspection and record plans.

Approval of this plan by the County of Los Angeles does not constitute a representation as to the accuracy of the location of or the existence or non-existence of any underground utility, pipe, or structure within the limits of this project. This note applies to all sheets.

If work is to be done in a State Highway, a permit must be obtained from the State of California, Division of Highways, 120 South Spring Street.

COUNTY OF LOS ANGELES, CALIFORNIA

Approved, Jack A. Lambie, County Engineer
Approved, A. M. Rawn
ONE INCH TO ONE HUNDRED FEET
Checked by: *P. J. ...*
Office of County Engineer, Dep. C. E. No. 7862

PC. 3683

PAGE 1

23,167

(3)

PC. 3683

PAGE 1

23,167

(3)

PC. 3683

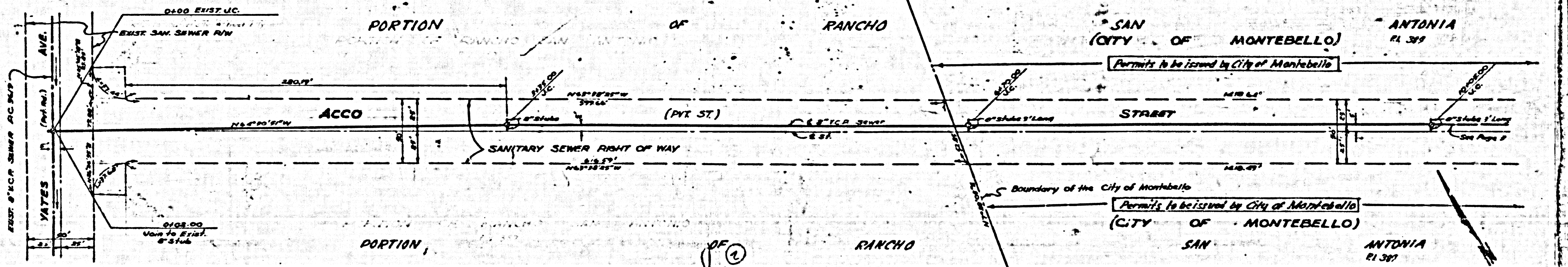
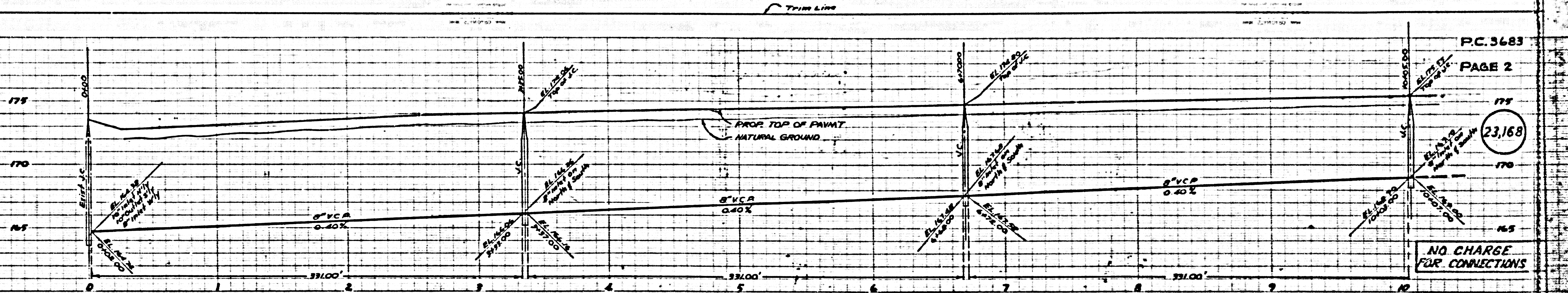
23,169

NO CHARGE FOR CONNECTIONS

ALL PERMITS TO BE OBTAINED FROM CITY OF MONTEBELLO

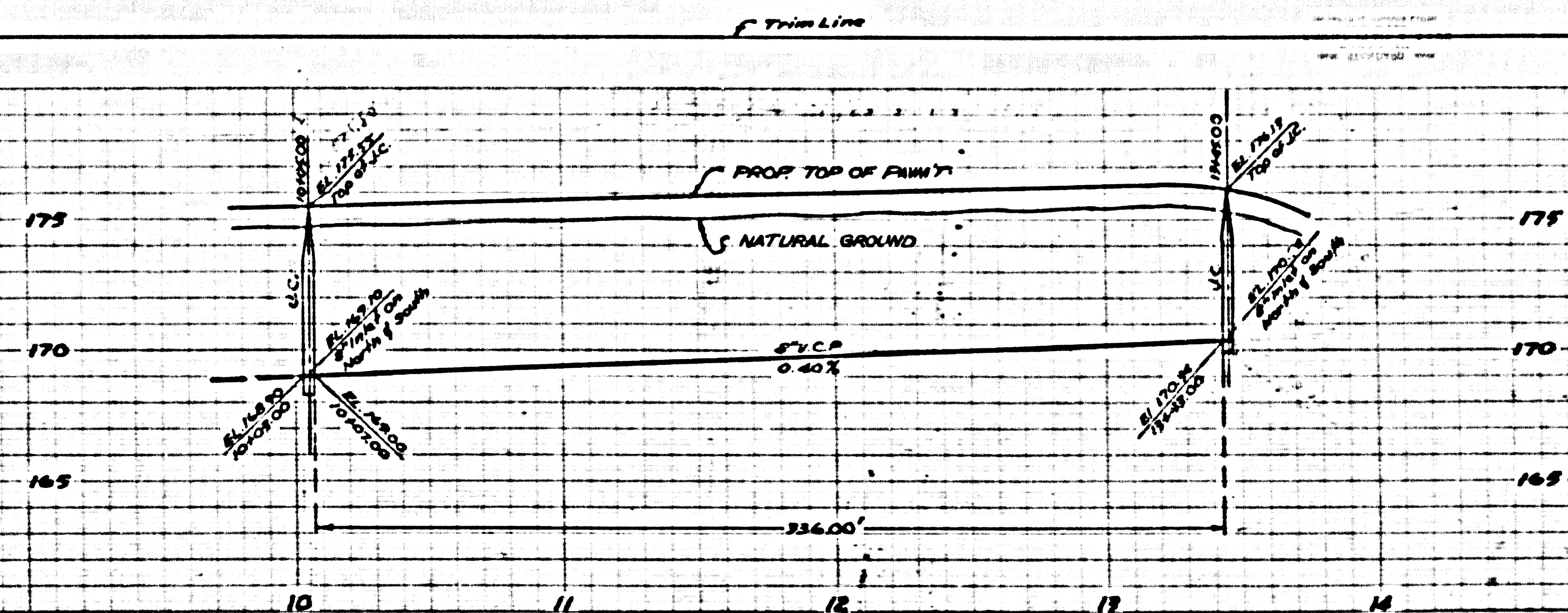
23,168

NO CHARGE FOR CONNECTIONS

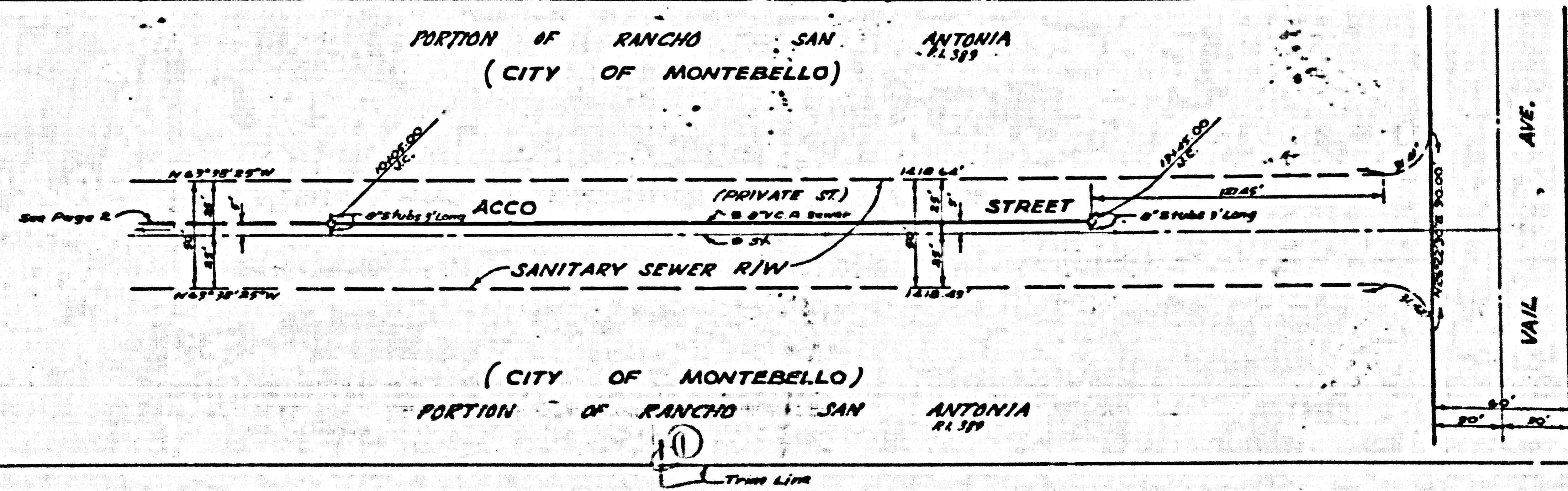


BA No. 26-156-9
Blnd. No.

PC 3683



PC 3683
PAGE 3
23,169
NO CHARGE FOR CONNECTIONS
ALL PERMITS TO BE OBTAINED FROM CITY OF MONTEBELLO



10