

PC 3685  
Page 2

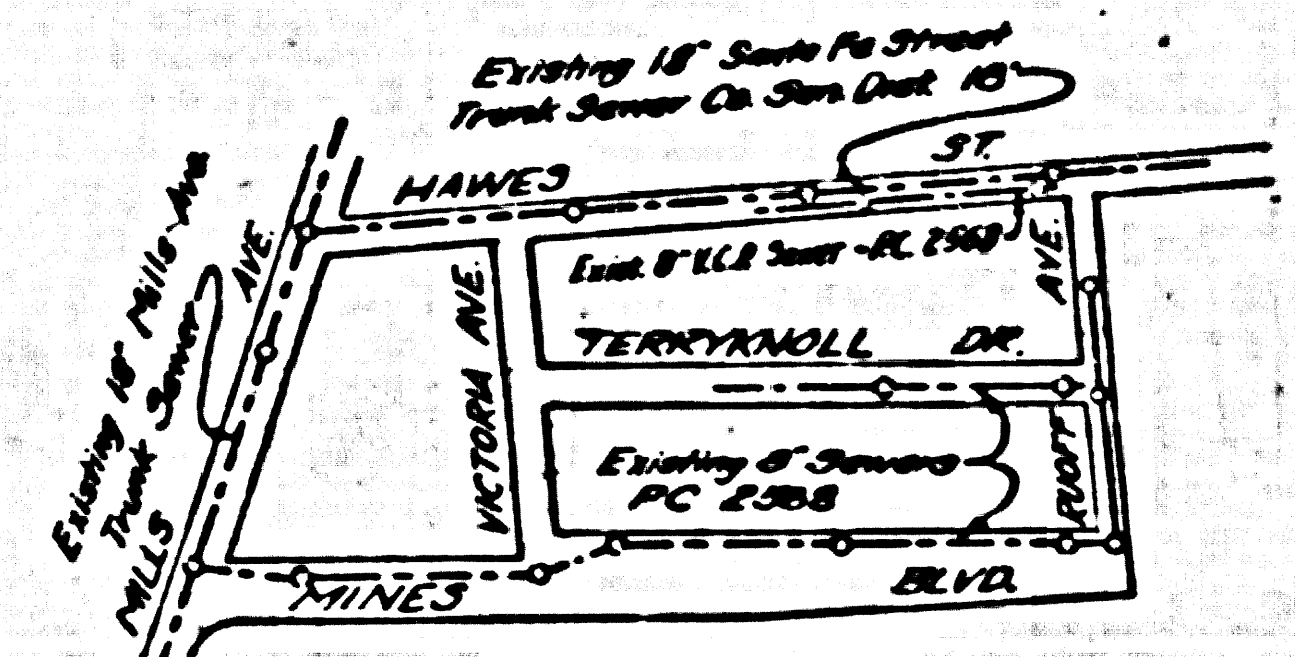
NO CHARGE FOR CONNECTIONS

21,955

B.M. 37-2531, Elev 164.912  
N.E. Corner of Corner of Mills Ave. 9908 Mills Ave.  
Corner of Mills Ave. & Howard St.

Sheet No.	Pages
1	1-2

NO CHARGE FOR CONNECTIONS  
P. K. Quinn 10-14-55



Trim Line

### WHITTIER BUILDING DISTRICT No. 11

#### NOTE:

- Provide stakes on the property lines or property lines produced at right angles to the sewer line at the center line of each manhole.
- No representative of the County Engineer will survey or layout any portion of the work.
- The owner or his authorized representative shall furnish the County Engineer with grade sheets and stations for all house laterals and Y branches and shall provide stakes for them at their proper locations with stationing plainly marked. Any change in location shall be requested in writing by the owner or his representative.
- No revisions shall be made in these plans without the approval of the County Engineer.
- Use standard manhole frames and covers, S-o-117.
- Use standard strength pipe except as noted.
- Use concrete mortar for all vitrified clay pipe joints.
- Resurface all trench within paved area to meet L.A. County Road Dept. or California State Highway Dept. requirements in accordance with permit.
- Erect four feet of sewer at points of interference with poles, S-o-119.
- All structures shall be brick sewer structures, S-o-104.
- For allowable leakage test, use Formula No. 1, Spec's, Sec. 51.
- Manhole tops in unimproved Right-Of-Way to be 6" above finish grade.

PROFILE, ALIGNMENT AND GRADE OF  
SANITARY SEWERS  
TO BE CONSTRUCTED IN

Ruoff Ave.

PRIVATE CONTRACT NO. 3685  
W. S. 34  
1 SHEET

Scale: VERT. 1"=4'  
HORIZ. 1"=40'  
August, 1955  
PREPARED IN THE OFFICES OF  
Clarence A. Magnuson

FOR LEGEND SEE PLAN NO. S-o-64

#### NOTES:

Grades to which this improvement is to be constructed are shown on plans and profiles. Grade points for top of curbs, center line of streets, or center line of alleys are shown by circles on profiles. All all points between designated points the grade shall be established so as to conform to a straight line drawn between said designated points.

Elevations are in feet above U.S.G.S. datum or mean sea level.

This drawing and the data hereon are hereby made a part of the specifications.

Work shall be constructed according to specifications on file in the office of the County Engineer and shall be prosecuted only in the presence of the County Engineer.

Shall not be construed as a permit to excavate in County streets from the Los Angeles County Road Dept., 100 W. 1st St. and make a connection with the City Dept. 210 W. Broadway.

Approval of this plan by the County of Los Angeles does not constitute a representation as to the accuracy of the location of or the existence or non-existence of any underground utility, pipe, or structure within the limits of this project. This note applies to all sheets.

If work is to be done in a State Highway, a permit must be obtained from the State of California, Division of Highways, 120 South Spring Street.

COUNTY OF LOS ANGELES, CALIFORNIA  
Approved, John A. Lambie, County Engineer  
Approved, A. M. Kamm  
A. P. Collins  
Checked by: P. K. Quinn 10-14-55  
Office of County Engineer, Box, P. O. No. 7860

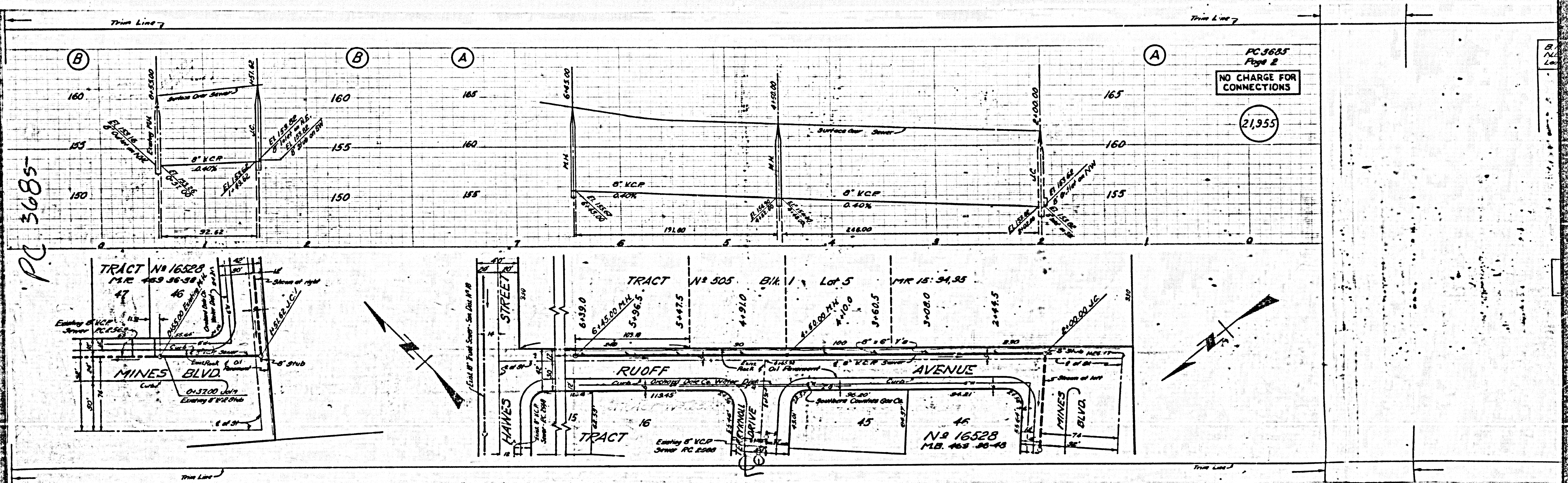
PC 3685  
Page 1

21,954

Ruoff Ave.

PC 3685

Checked 12-19-55 W. Quinn

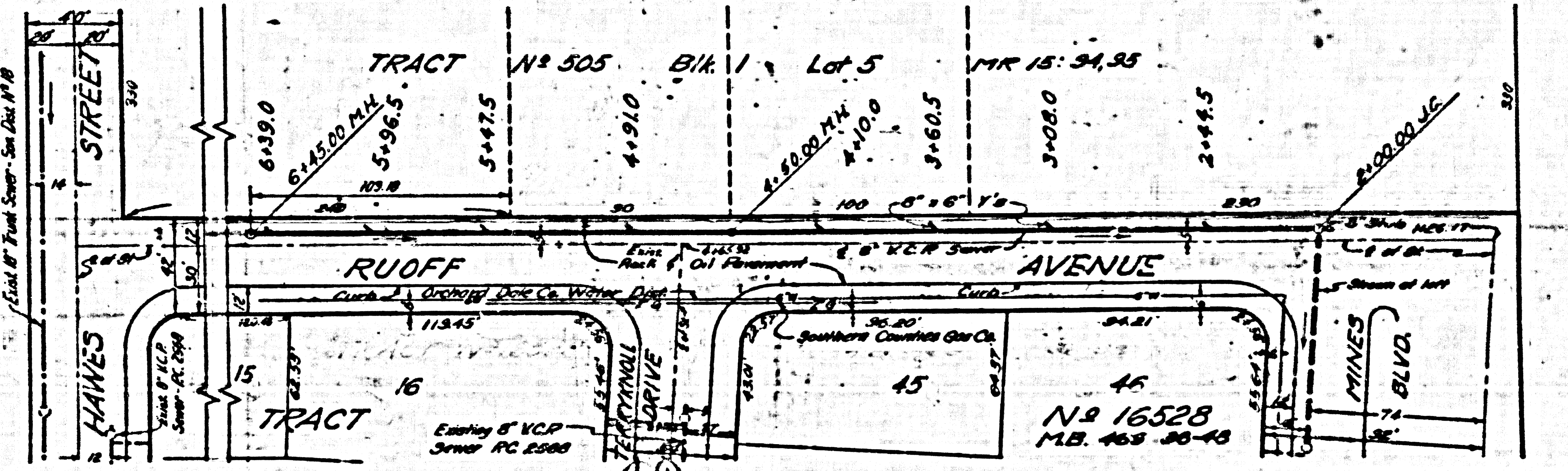
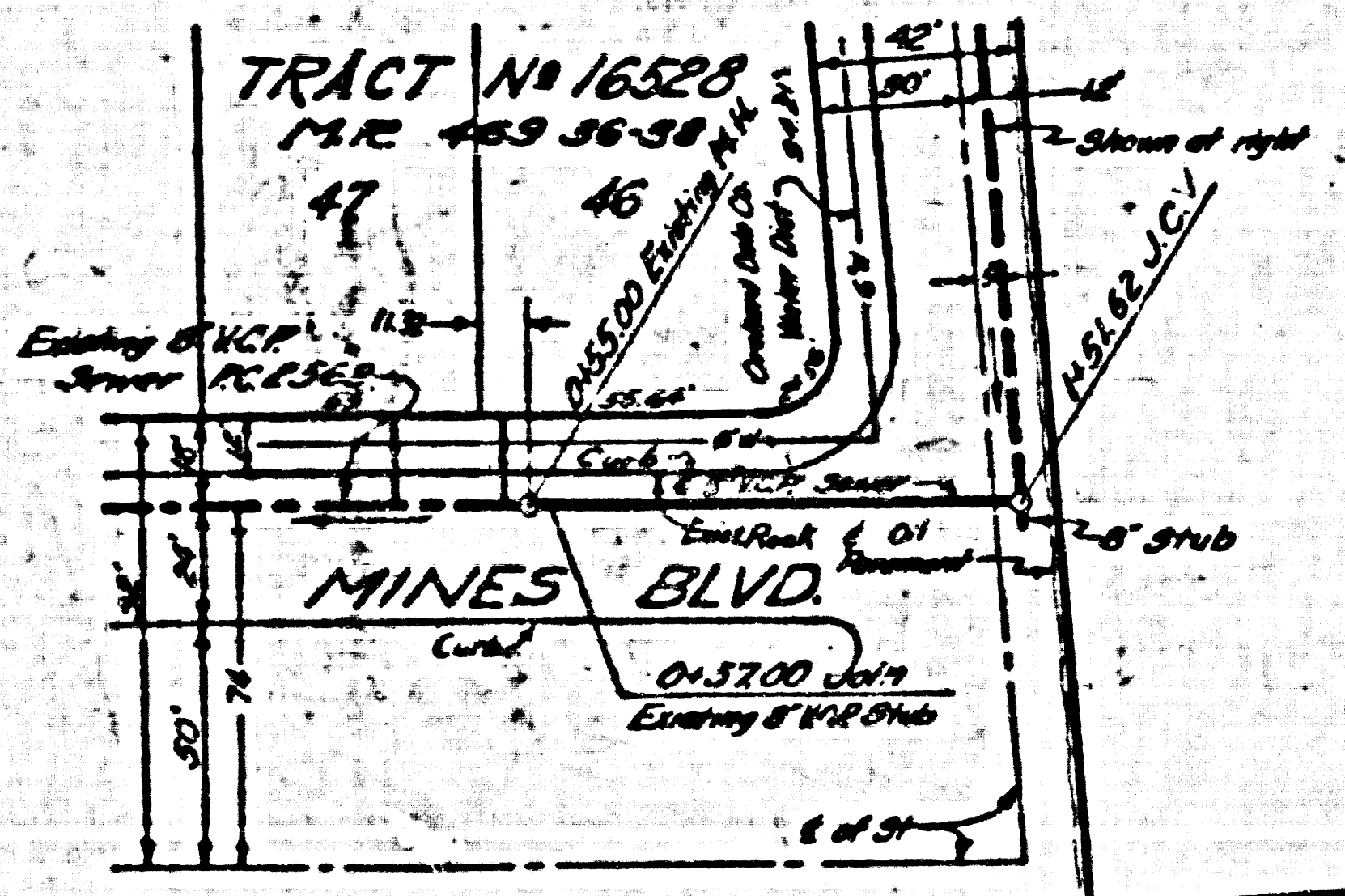


PC 3685  
Page 2

NO CHARGE FOR CONNECTIONS

21,955

PC 3685



Tract No. 16528  
M.B. 468 30-43

