

P.C. 3691
Page 2

22,073

CTIONS

S.M. Rd Dist. 51 1A07 - 8 Am 05.704
Clark Ave. 1/2 Block No. 28. Corner
117 to curb 28' So. of curb returns

BELLFLOWER BLDG. DIST. N^o 4

NOTE:

Provide stakes on the property lines or property lines produced at right angles to the sewer line at the center line of each manhole.

No representative of the County Engineer will survey or layout any portion of the work.

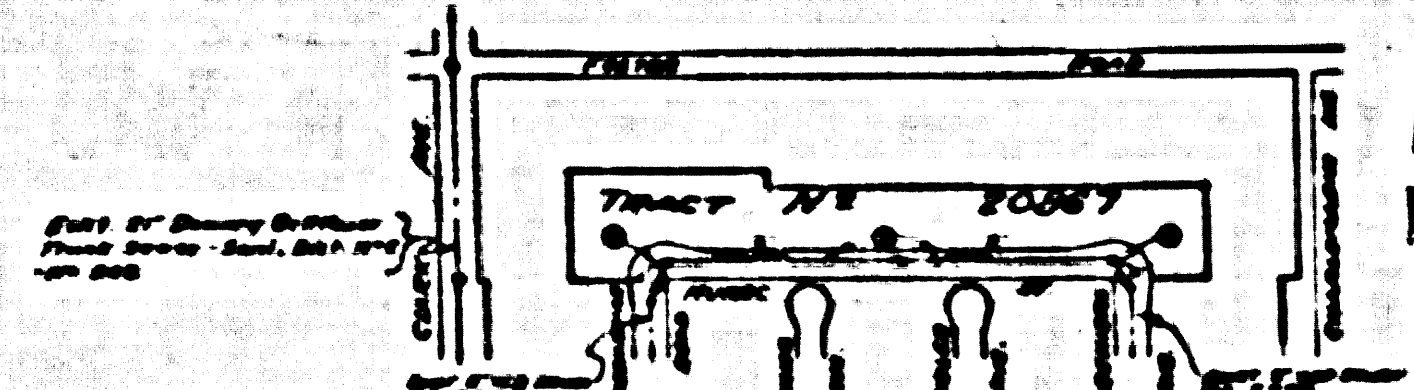
The owner or his authorized representative shall furnish the County Engineer with grade sheets on stations for all house laterals and Y branches and shall provide stakes for them of hole proper locations with stationing plainly marked. Any change in location shall be requested in writing by the owner or his representative.

No revisions shall be made in these plans without the approval of the County Engineer.

1. Use standard manhole frames and covers, S-6-117.
2. Use standard strength pipe except as noted.
3. Use cement mortar for all vitrified clay pipe joints.
4. Resurface all trench within paved area to meet L. A. County Road Dept. or California State Highway Dept. requirements in accordance with permit.
5. Excavate four feet of sewer at points of interference with poles, S-6-119.
6. House laterals to be constructed with inverts at property line $\text{---} \text{---}$ feet below curb grade except as noted.
7. All structures shall be brick sewer structures, S-6-104.
8. For allowable leakage test, see Formula No. 2, Spec's, Sec. 81.
9. Manhole tops to be unimproved. Right-of-Way to be at above finish grade.

SHEET	PAGE
1	1-3

NO CHARGE
FOR CONNECTIONS
& CURBS
10-20-55



INDEX MAP
Scale: 1"=400'
Tract N° 20867
P.C. 3691

checked 1-10-56 Whelan

PROFILE, ALIGNMENT AND GRADE OF
SANITARY SEWERS
TO BE CONSTRUCTED IN

TRACT N^o 20867

PRIVATE CONTRACT NO. 3691
W. S. 33
1 SHEET

Scale: VERT. 1"=4' HORIZ. 1"=40'
Aug. 1955
PREPARED IN THE OFFICES OF
MANNING & DETILLA

FOR LEGEND SEE PLAN NO. S-6-64

NOTE:

Grades to which this improvement is to be constructed are shown on plan. Profile. Grade points for top of curb, center line of street, or center line of alley are shown. Distances on profile. At all points between designated points the grade shall be established so as to conform to a straight line across between said designated points.

Elevations are in feet above U.S.C. datum or mean sea level.

This drawing and the data hereon are hereby made a part of the specifications.

Work shall be constructed according to specifications on file in the office of the County Engineer and shall be presented only in the presence of the County Engineer.

Before work can be started, the contractor must obtain a permit to excavate in County streets from the L.A. County Road Dept., 100 W. 2nd St. and make a deposit with the County Engineer, 120 S. 2nd St. Groundwater sufficient to cover the cost of construction inspection and record plan.

Approval of this plan by the County of Los Angeles does not constitute a representation as to the accuracy of the location of or the existence or non-existence of any underground utility, pipe, or structure within the limits of this project. This note applies to all sheets.

If work is to be done in a State Highway, a permit must be obtained from the State of California, Division of Highways, 120 South Spring Street.

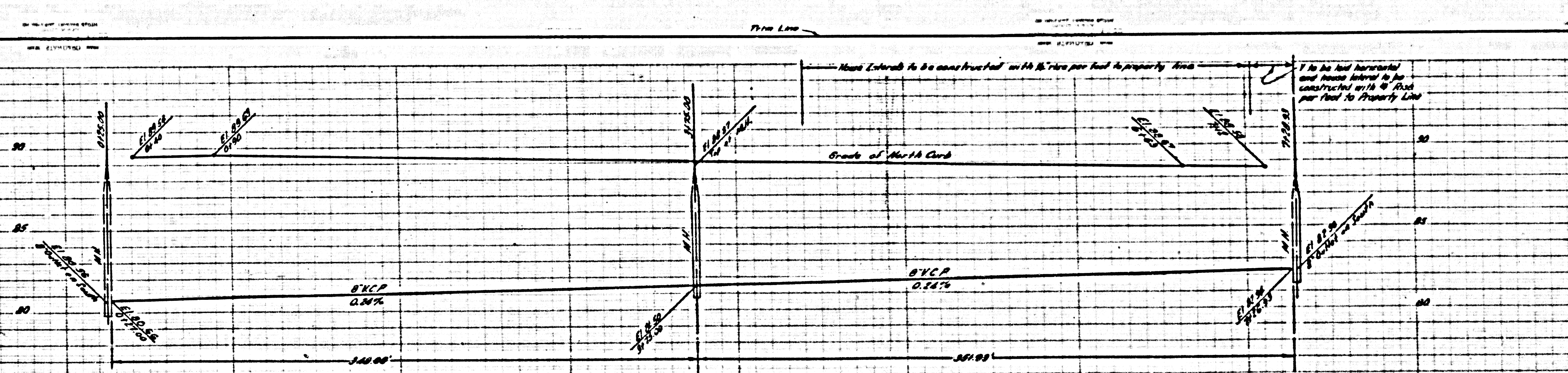
COUNTY OF LOS ANGELES, CALIFORNIA
Approved, John A. Lamb, County Engineer
Approved, A. M. Ryan
BY: P. Collins, Surveyor
BY: R. O. Mathews, Office Engineer
Checked By: R. K. Kuhn, 10-30-55
Office of County Engineer, Reg. C. E. No. 7860

P.C. 3691
Page 1

22,072

TRACT No. 20867

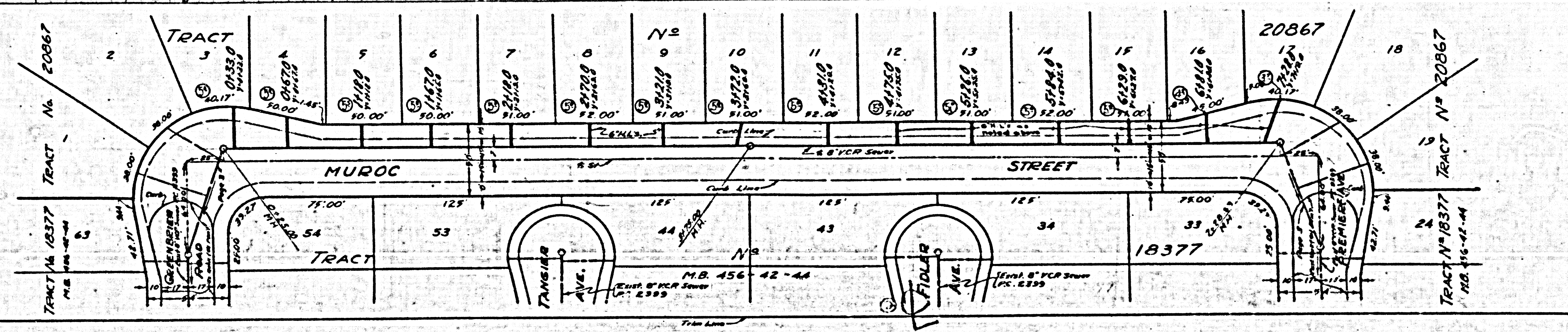
P.C. 3691

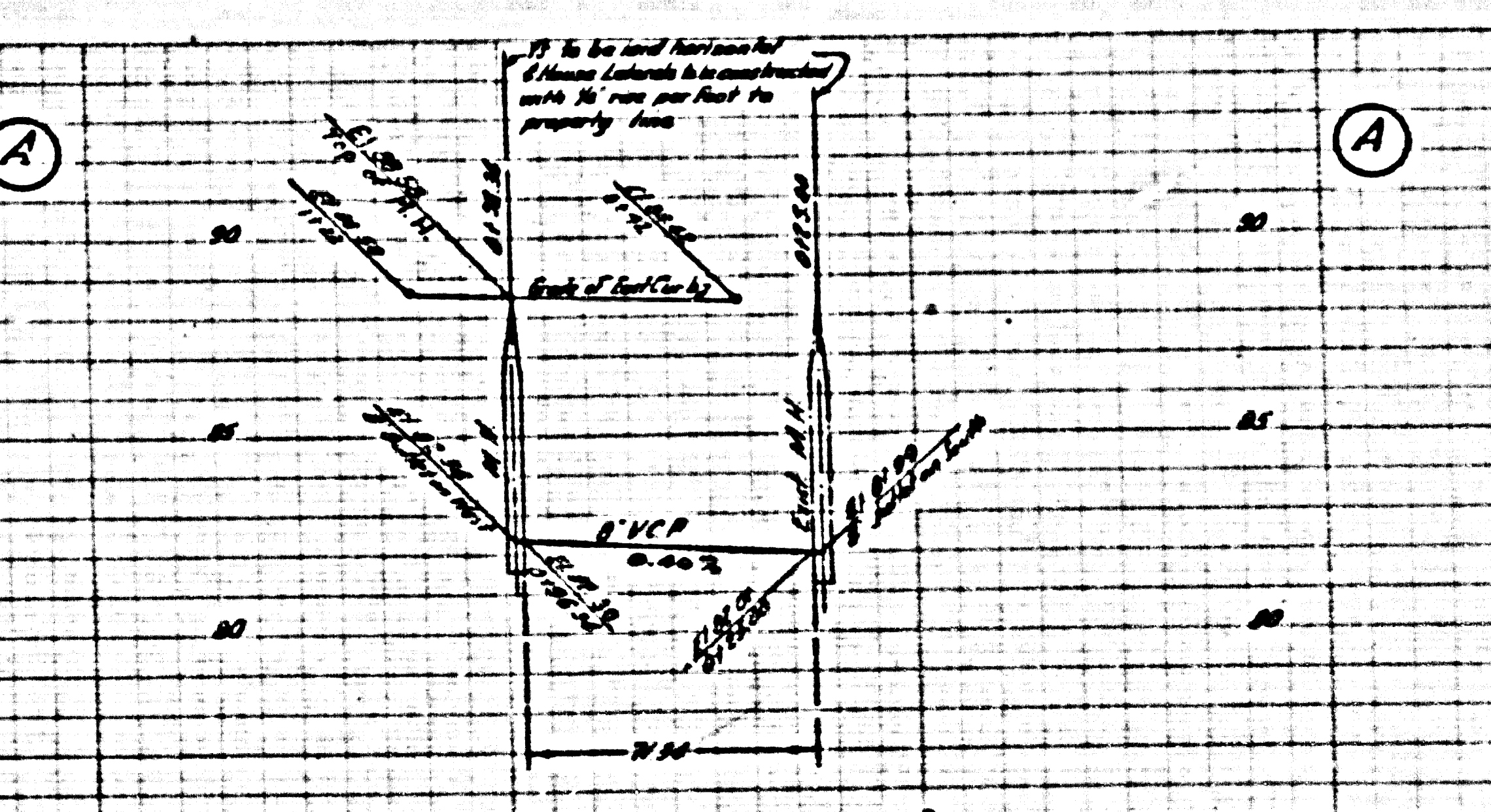
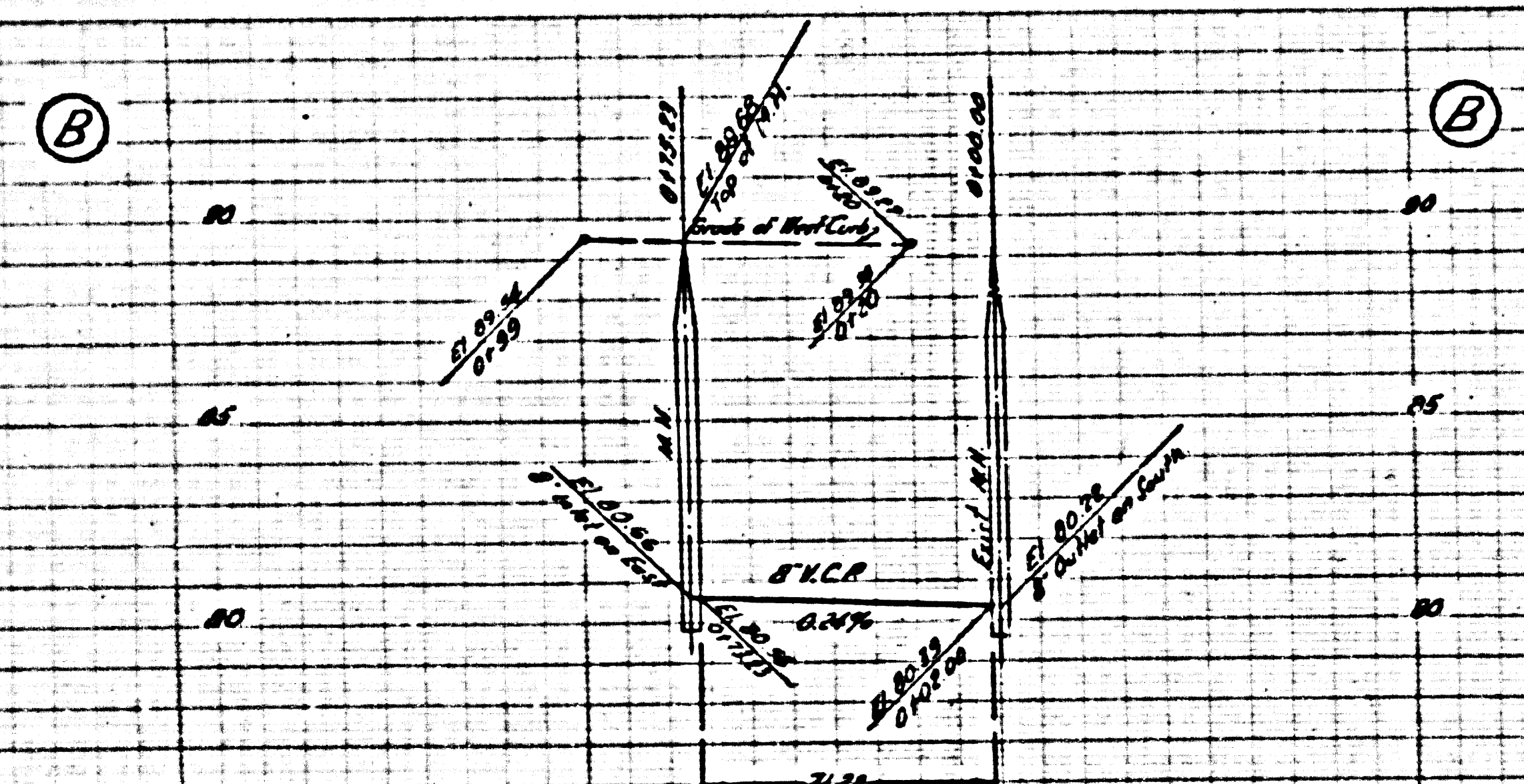


P.C. 3691
Page 2

22,013

NO CHARGE
FOR CONNECTIONS



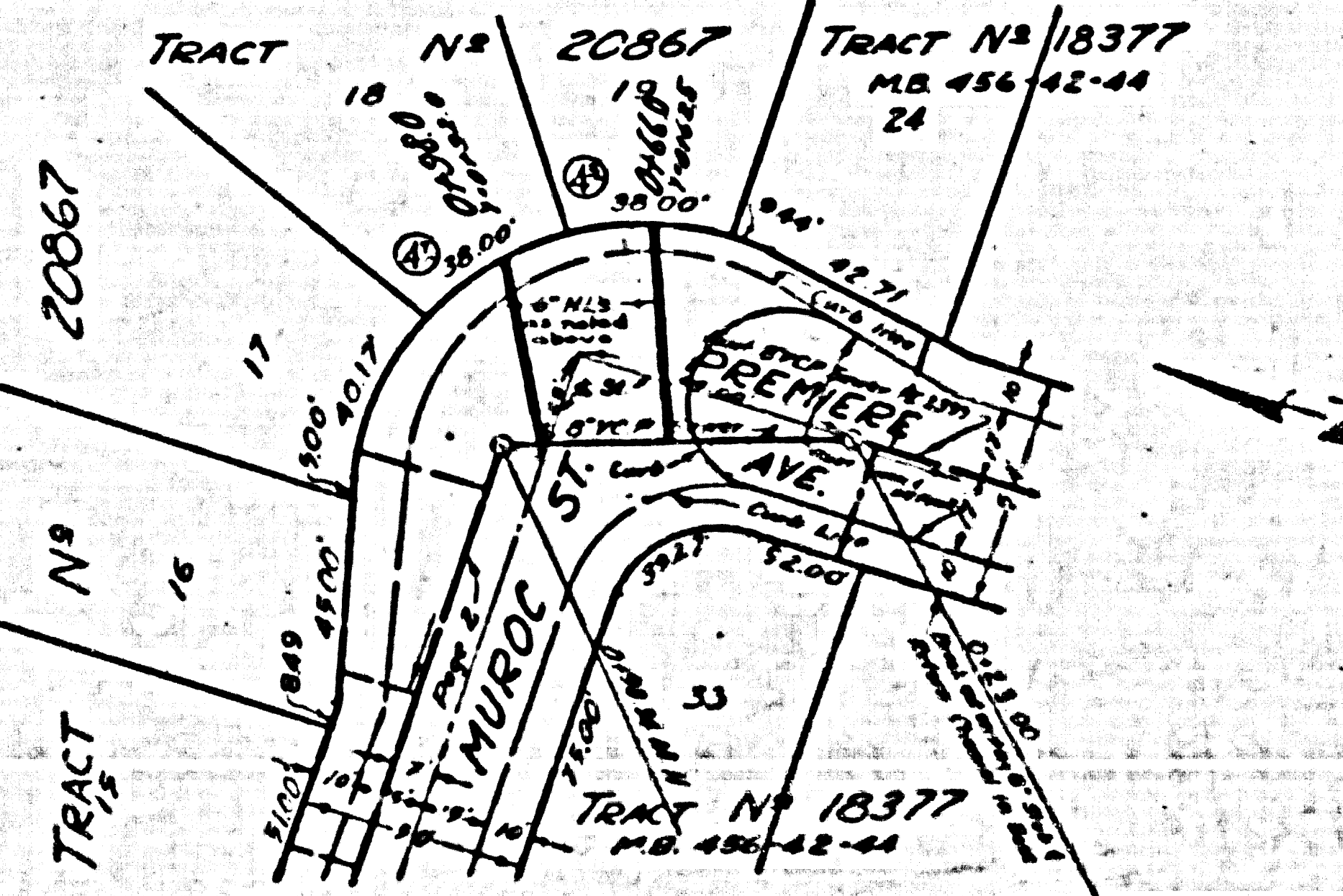
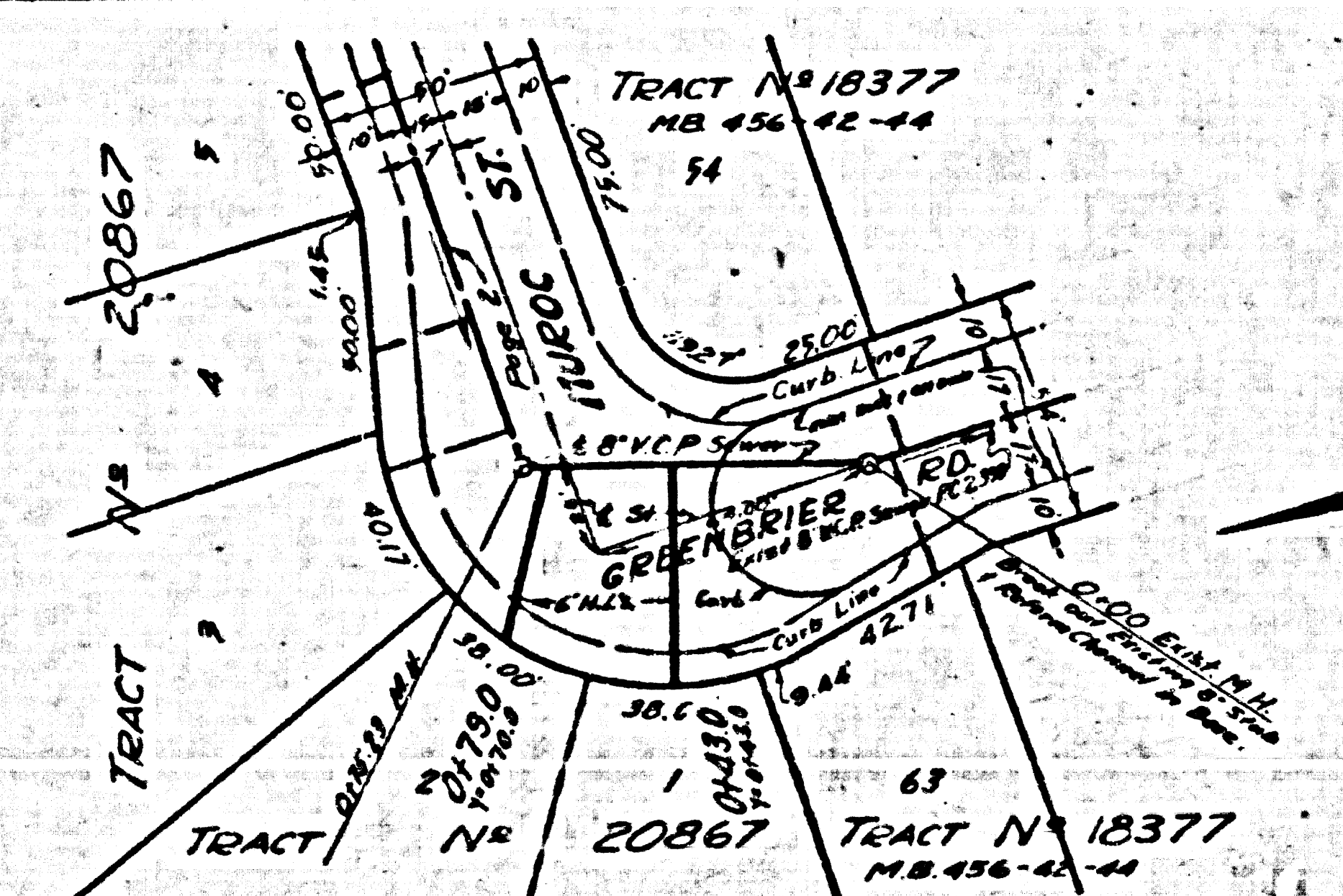


PC. 3691
Page 3

22,074

NO CHARGE
FOR CONNECTIONS

PC. 3691



TRACT No. 20867
TRACT No. 18377