

23,412

NO CHARGE
FOR CONNECTIONS

Ground Surface
165

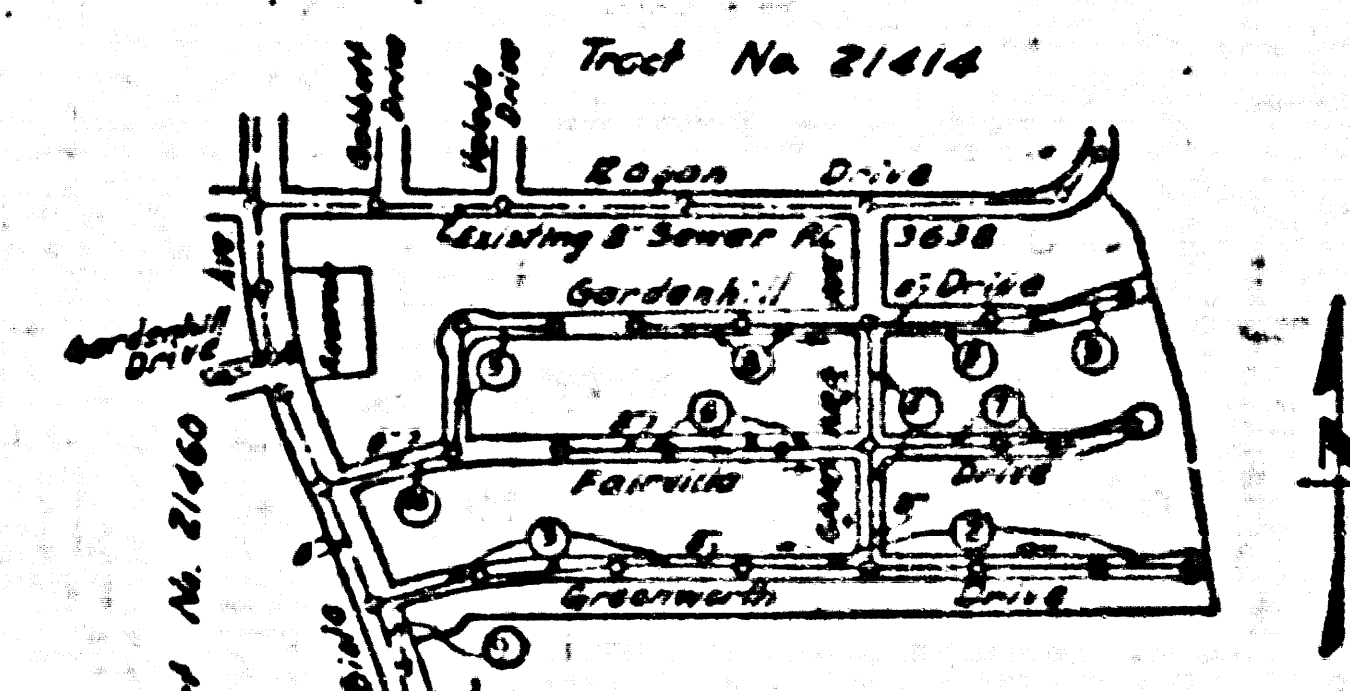
150

TUTURE ST

B.M. - Valley View Ave. & Rosecrans Ave. 100' East of the Center Line of Rosecrans Ave. & 11' West of the Center Line of Valley View Ave. Set in concrete 15" below the street surface in a well cut through the pavement & protected by a cast iron cover marked "County Surveyor Monument" O 3rd County Surveyor Monument Marked "B.M. 1-6 1931 Re 529".

County Surveyor's F.B. 1928-11 1935 adj. - EL. 82.85

Note: This Bench Mark is denoted as "S.K. 2178" (E.L. No 964) by L.A. Co. Rd. Dept. - add 0.649 to all Elevations to convert to L.A. Co. Rd. Dept. Datum.

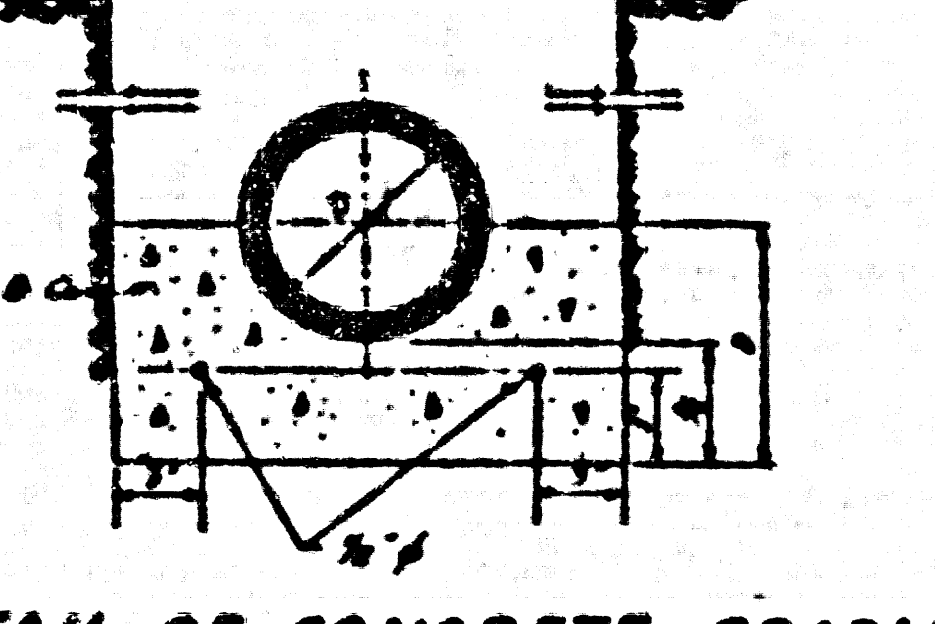


Note: Lot 38 is Served from Sewer in Biola Ave. P.C. 3588
Lots 1-19; 18B-19C Served from Sewer in Ragan Drive Tract No. 21414 - P.C. 3638
Lot 177 is a Reservoir.

INDEX MAP
SCALE 1" = 600'

TRACT NO. 16970
P.C. 3696

SHEETS	PAGES
1	1-6
2	8-9



DETAIL OF CONCRETE CRADLE IN COMPACTED FILL
NO SCALE

NORWALK BLDG. DIST. NO. 4.2

- NOTE:**
- Provide stakes on the property lines or property lines produced at right angles to the sewer line at the center line of each manhole.
- No representative of the County Engineer will survey or layout any portion of the work.
- The owner or his authorized representative shall furnish the County Engineer with grade sheets and stations for all house laterals and 1/2 inch and 3/4 inch grade stakes for them at their proper locations with stationing plainly marked. Any change in its plan shall be requested in writing by the owner or his representative.
- No revisions shall be made in these plans without the approval of the County Engineer.
1. Use standard manhole frames and covers, S-o-117.
 2. Use standard strength pipe except as noted.
 3. Use cement mortar for all vitrified clay pipe joints.
 4. Resurface all trench within paved area to meet L.A. County Road Dept or California State Highway Dept. requirements in accordance with permit.
 5. Excave four feet of sewer at points of interference with poles, S-o-119.
 6. House laterals to be constructed with laterals at property line 6 feet below curb grade except as noted.
 7. All structures shall be brick cover structures, S-o-104.
 8. For alternate leakage test, use Formula No. 1, Spec's., Sec. 51.
 9. Manhole tops in unimproved Rights-Of-Way to be 6" above finish grade.
 10. The contractor shall satisfy himself of all substructures and shall be responsible for their location.
 11. No construction will be permitted in filled areas unless acceptable certification is submitted to the Construction Division of the County Engineers Department that compaction is greater than 80%. If compaction is less than 80%, the sand must be cradled as shown on plans. (See detail Page 1). If compaction is greater than 80%, cradling is not required. However joint compound must be substituted for cement mortar for all joints in filled areas.
 12. Private Engineer to furnish house lateral depth of Property Line below top of Curb elevation or elevation of Street for each house lateral on the grade sheet.

NO CHARGE FOR CONNECTIONS
Listed 4-12-56

REVISION
1. Revised curb & sewer grades (Pg. 2) in Greenworth Dr. from Sta. 11+83.04 to 81+02.00
2. Pg. 4 - Revised stationing of existing manhole from 0+75.35 to 0+81.89. Changed Sta. from 24.65 to 18.11
BY MEINING & QUIROS INC. RE 3588
APPROVED, LOS ANGELES COUNTY ENGINEER
BY [Signature] RE 3696

PROFILE, ALIGNMENT AND GRADE OF
SANITARY SEWERS
TO BE CONSTRUCTED IN

TRACT NO. 16970

PRIVATE CONTRACT NO. 3696
W. S. 34
2 SHEETS

Scale: VERT. 1" = 4'
HORIZ. 1" = 40'
AUG. 1955
PREPARED IN THE OFFICE OF
WM. H. FAIR JR. INC.

FOR LEGEND SEE PLAN NO. S-o-64

NOTE:

Grades to which this improvement is to be constructed are shown on plans and profiles. Grade points for top of curb, corner line of streets, or corner line of alleys are shown by circles on profiles. All elevations between designated points the grade shall be established as to conform to a straight line drawn between said designated points.

Excavations are in fact above U.S.C. & G.S. sea level datum of 1929.

The drawings and the data hereon are hereby made a part of the specifications.

Work shall be constructed according to specifications on file in the office of the County Engineer and shall be prosecuted only in the presence of the County Engineer.

Before work can be started, the contractor must obtain a permit to excavate in County streets from the L.A. County Road Dept., 108 W. 2nd St. and make a deposit with the County Engineer, Room 218, 250 So. Broadway, sufficient to cover the cost of construction inspection and record plans.

Approval of this plan by the County of Los Angeles does not constitute a representation as to the accuracy of the location of or the existence or non-existence of any underground utility, pipe, or structure within the limits of this project. This note applies to all sheets.

If work is to be done on a State Highway, a permit must be obtained from the State of California, Division of Highways, 130 South Spring Street.

COUNTY OF LOS ANGELES, CALIFORNIA
Approved, John A. Lambie County Engineer
Approved, A. M. Rawn
CHIEF ENGINEER, SAN DIST. NO. 12
BY [Signature]
Checked by [Signature] 4-12-56
Office of County Engineer, Dep. R. E. No. 7150

23,411

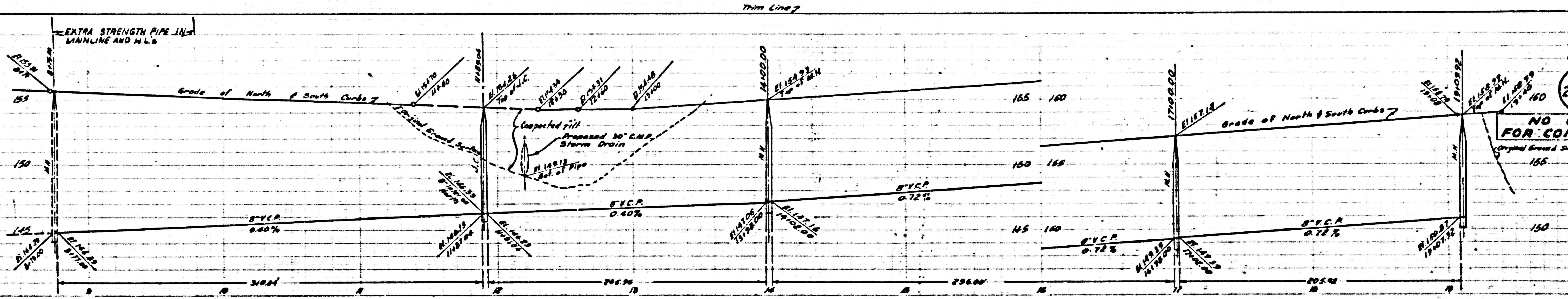
(9)

P.C. 3696

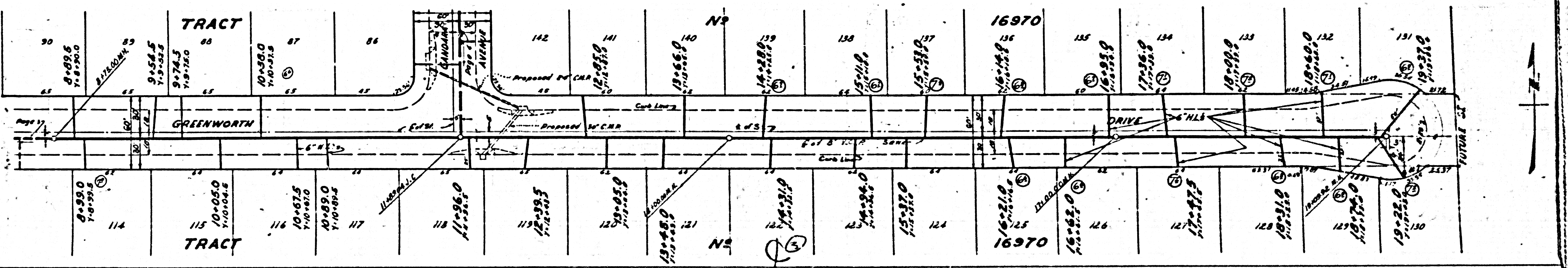
1

874

113



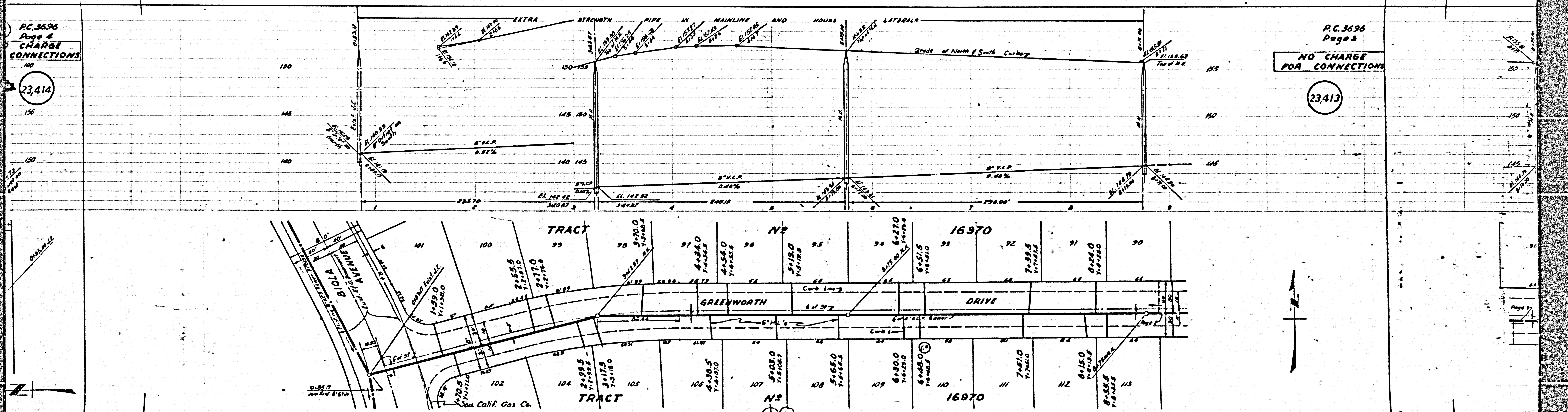
23,412



Note: Lot 30
Sewer
Lots 1-
from S
Tract
Lot 177

P.C. 3696
Page 4
CHARGE
CONNECTIONS

23,414

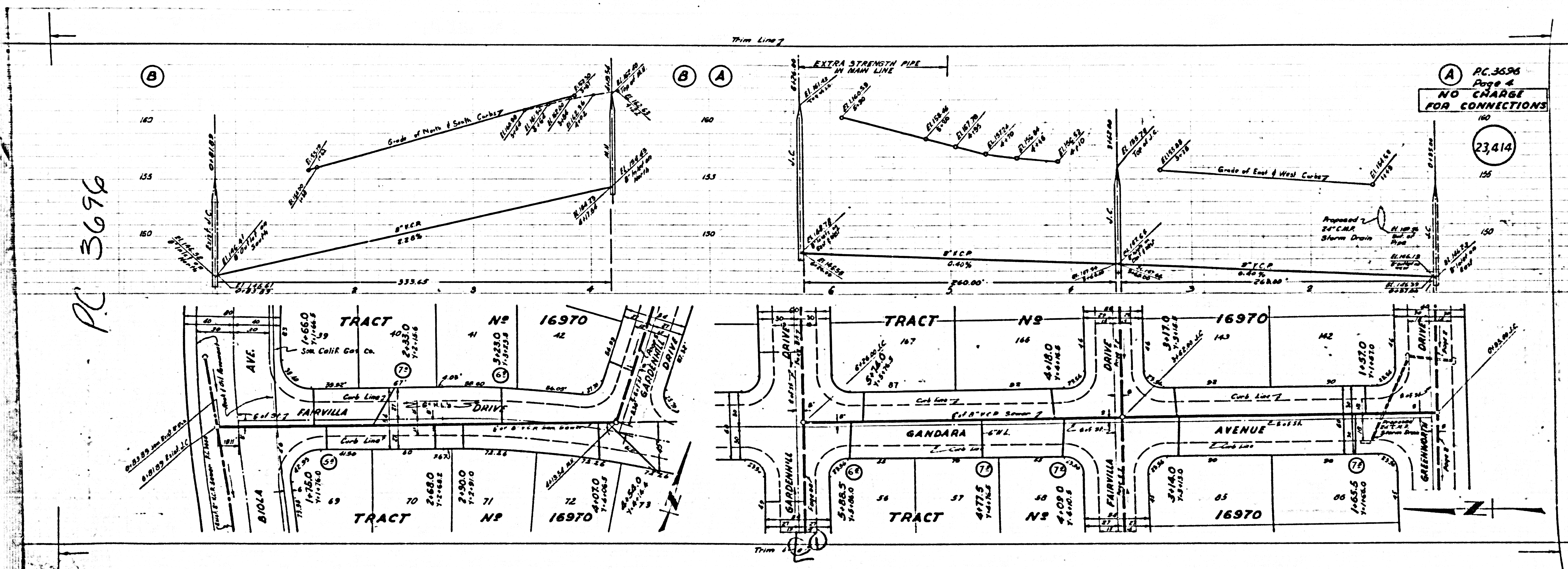


P.C. 3696
Page 3

NO CHARGE
FOR CONNECTIONS

23,413

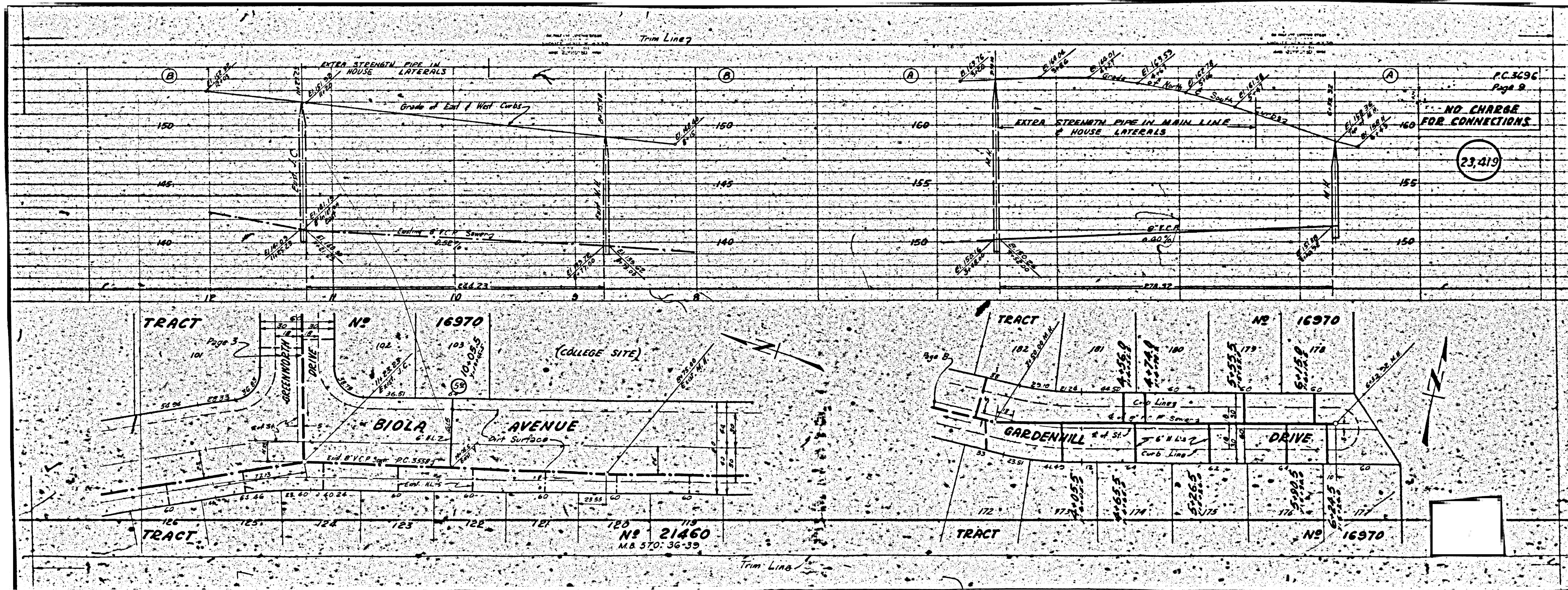
PC 3696

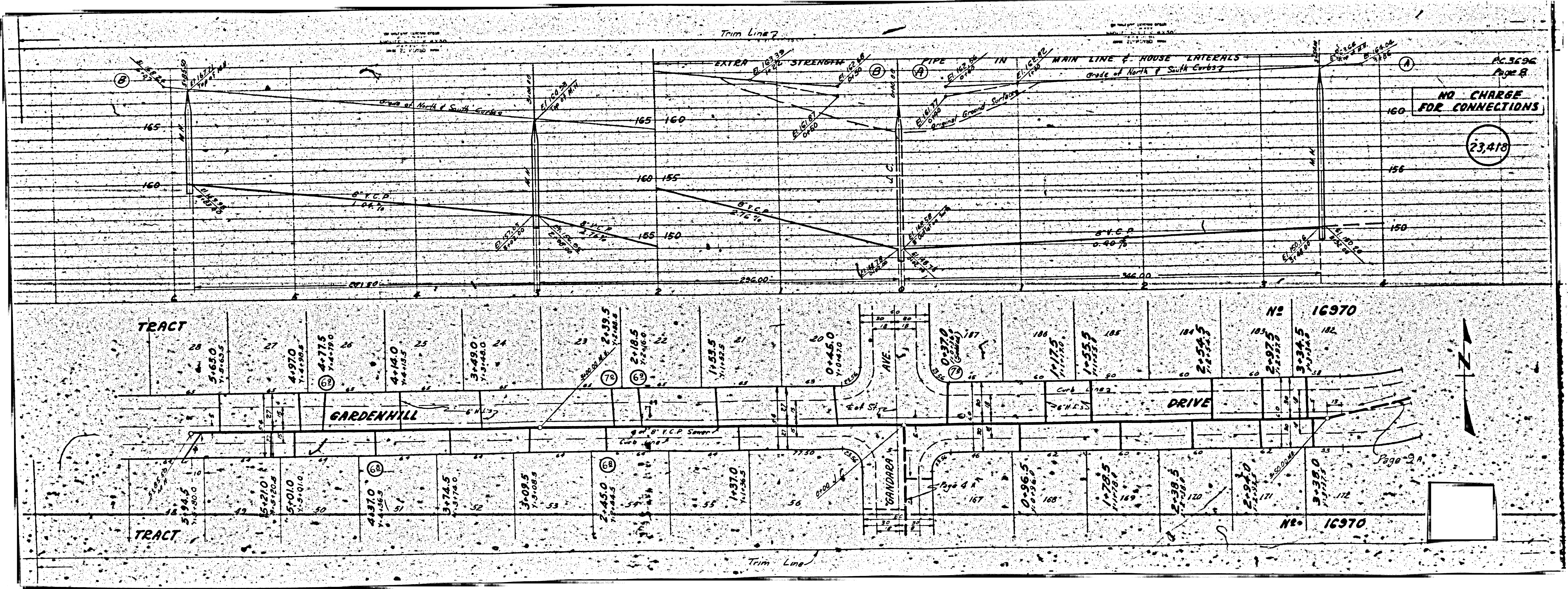


PC 3696
Page 4
NO CHARGE
FOR CONNECTIONS

23,414

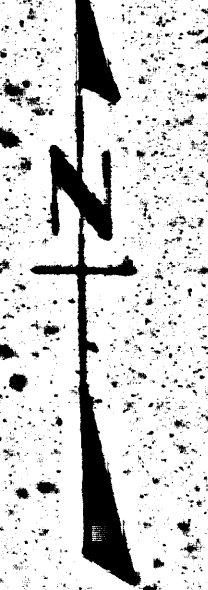






NO CHARGE FOR CONNECTIONS

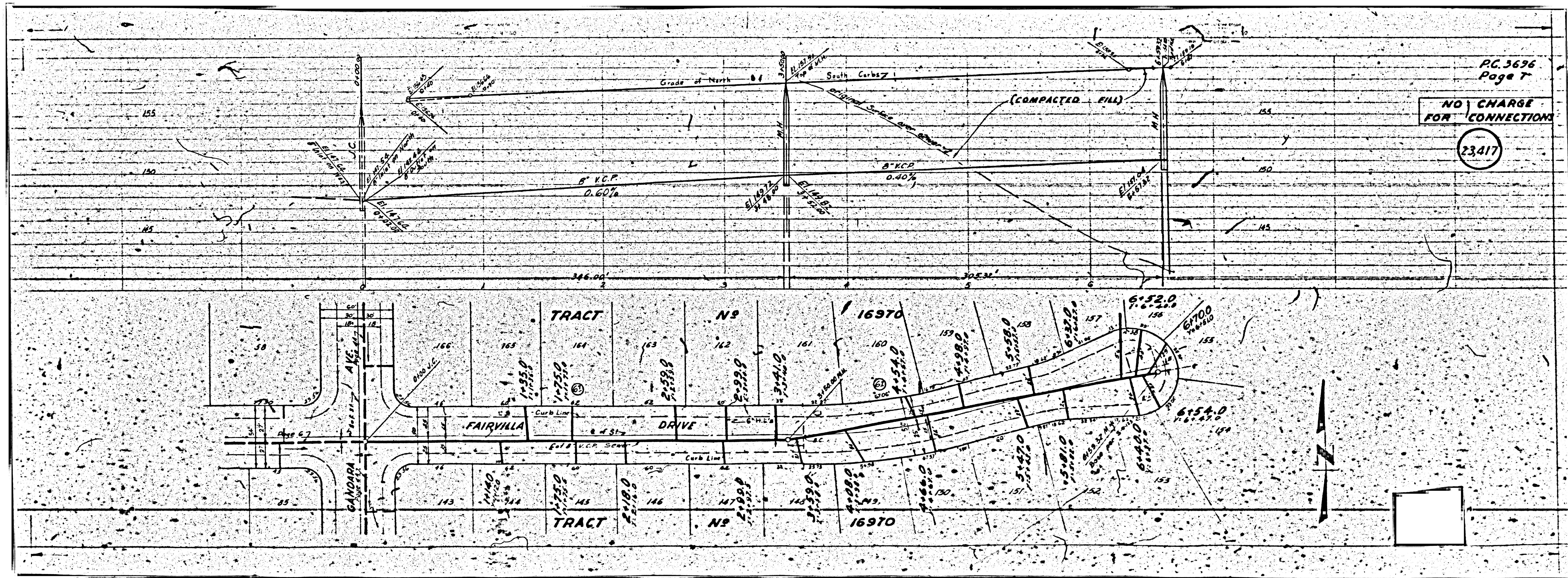
23,418



Page 3

No. 16970

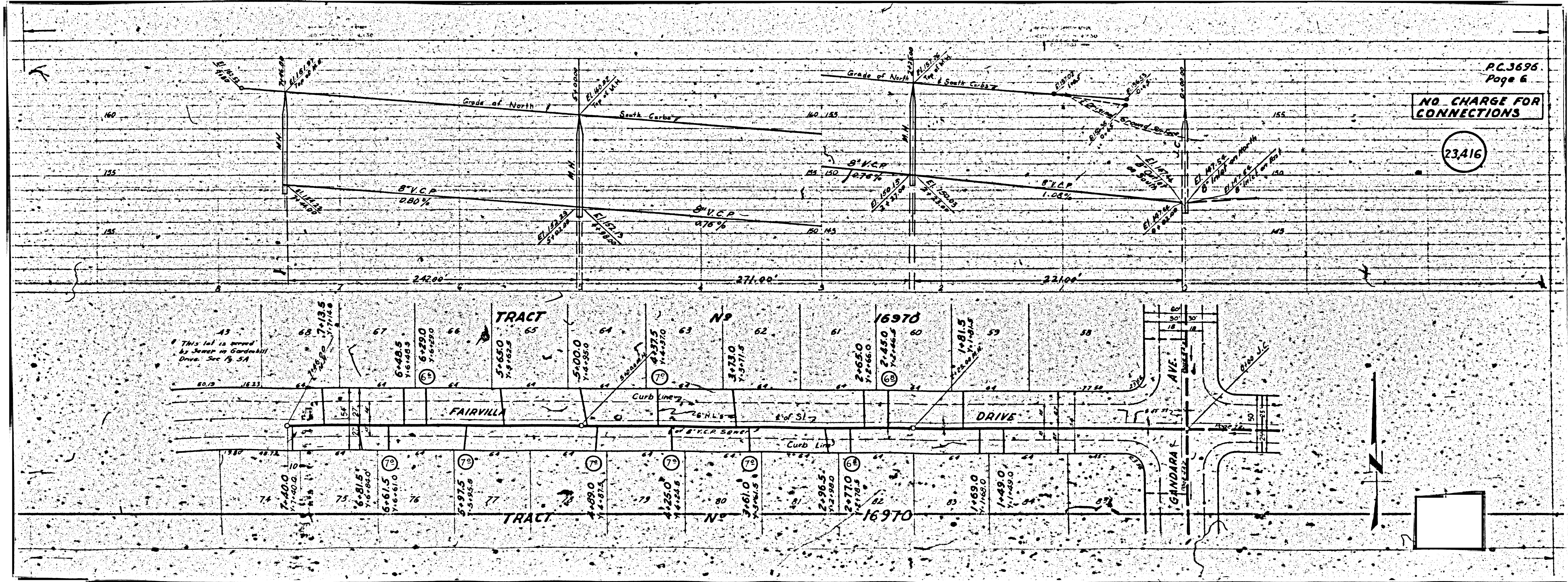
No. 16970



PG. 3696
Page 7
NO CHARGE
FOR CONNECTIONS
23417

NO. CHARGE FOR CONNECTIONS

23416



NO CHARGE
FOR CONNECTIONS

23,415

