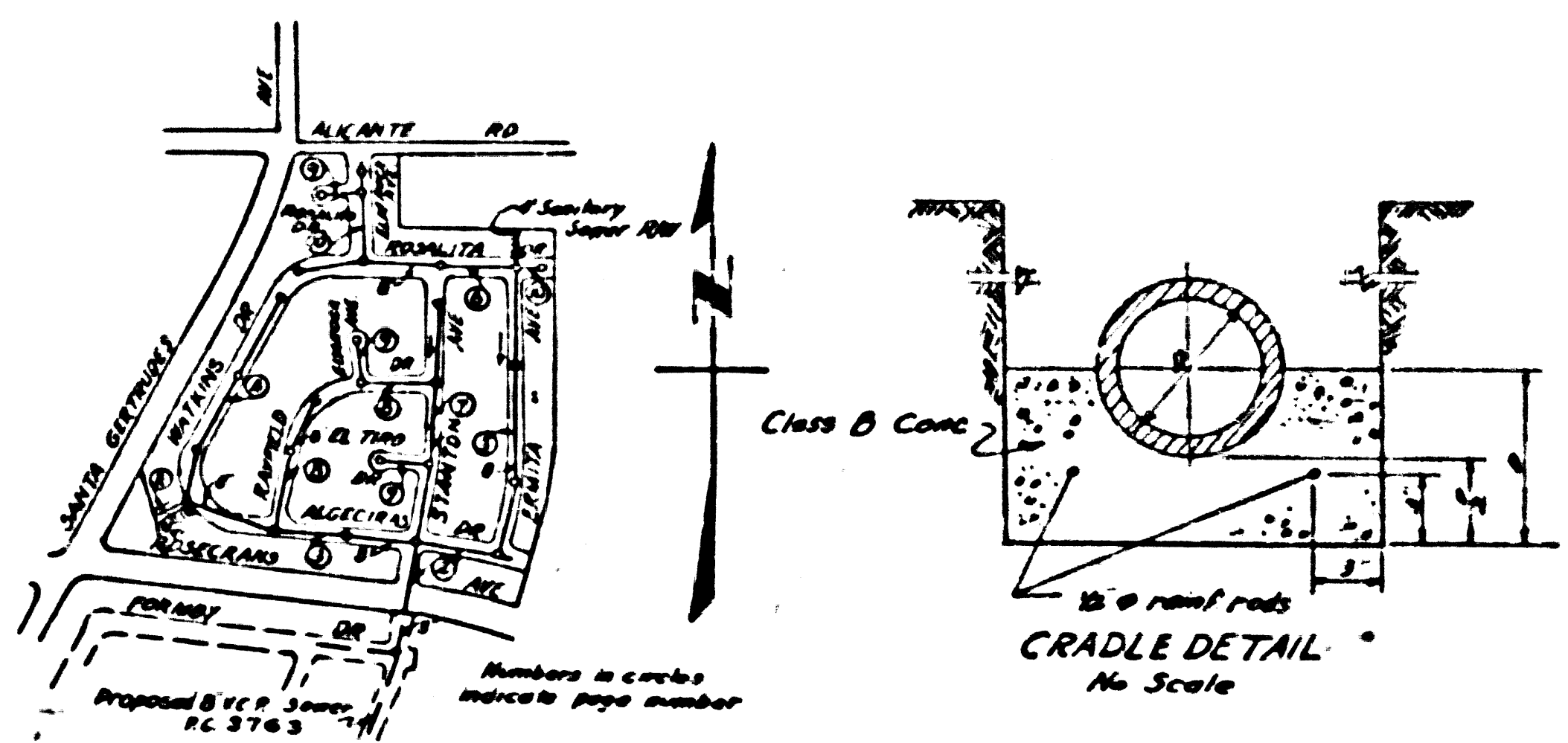


BENCH MARK:
 Stage Rd and Lutwiler Ave A 1st County Surveyor Monument Marked 37125
 Set in Concrete 16 Below the surface of the Intersection of the Center
 Line of Lutwiler Ave and the Center Line of Alondra Blvd in a Wall cut
 Through the Pavement and protected by a cast iron cover Marked
 County Surveyor Monument
 Co. Surv. R.B. 1804-G 1932 Adj. Elev. 109.962



INDEX MAP
 Scale 1" = 400 ft
 TRACT NO. 21841
 P.C. 3706

Sheet	Pages
1	1-5
2	6-10

**COLLECT CHARGES
 AS INDICATED**
 71. 21. 775 Estimated 9-14-56

checked 9-20-56 [Signature]

NORWALK BLDG. DIST. NO. 4.2

NOTE:
 Provide stakes on the property lines or property lines produced at right angles to the sewer line at the center line of each manhole.
 No revisions shall be made in these plans without the approval of the County Engineer.
 The owner or his authorized representative shall furnish the County Engineer with grade sheets and platens for all house laterals and Y branches and shall provide stakes for them at their proper locations with stationing plainly marked. Any change in location shall be requested in writing by the owner or his representative.

1. Use standard manhole frames and covers, S-a-117.
 2. Use standard strength pipe except as noted.
 3. Use cement mortar for all vitrified clay pipe joints.
 4. Resurface all trench within paved area to meet L.A. County Road Dept. or California State Highway Dept. requirements in accordance with permit.
 5. Excise four feet of sewer at points of interference with poles, S-a-119.
 6. House laterals to be constructed with inverts at property line 6 feet below curb grade except as noted.
 7. All structures shall be brick sewer structures, S-a-104.
 8. For allowable leakage test, see Formula No. 1, Spec's., Sec. 51.
 9. Manhole tops in unimproved Right-Of-Way to be 6" above finish grade.
- A. The contractor shall verify himself all substructures and shall be responsible for their location.**
B. No construction shall be permitted until a field water acceptable certification is submitted to the Construction Division of the County Engineer's Department that compaction is greater than 90%.
C. If compaction is less than 90%, no work must be credited as done on this plan. (See detail Page 1).
D. If compaction is greater than 90%, cradling is not required. However, sand compaction shall be substituted for cement mortar for all joints in filled areas.

(1) DO NOT ISSUE PERMITS UNTIL OUTLET SEWER IS CONSTRUCTED.
(2) DO NOT GRANT PERMISSION FOR THE CONSTRUCTION OF TEMPORARY SEPTIC-TANKS OR CESSPOOLS—CALL MR. COLLINS, SANITATION DIVISION, MA 9-4747, EXT. 472.

PROFILE, ALIGNMENT AND GRADE OF
SANITARY SEWERS
 TO BE CONSTRUCTED IN

TRACT NO. 21841

PRIVATE CONTRACT NO. 3706
W. S. 34

2 SHEETS
 Scale: VERT. 1" = 8'
 HORIZ. 1" = 40'

PREPARED IN THE OFFICES OF
WM. H. FAIR JR., INC.

F. Quinn
 Reg. C.E. No. 8583

FOR LEGEND SEE PLAN NO. S-a-64

NOTE:
 Grades to which this improvement is to be constructed are shown on plans and profiles. Grade points for top of curbs, center line of streets, or corner line of alleys are shown by circles on profiles. At all points between designated points the grade shall be established so as to conform to a straight line drawn between said designated points.
 Elevations are in feet above U.S.C. & G.S. Sea level datum of 1929.
 This drawing and the data hereon are hereby made a part of the application.
 Work shall be constructed according to specifications on file in the office of the County Engineer and shall be prosecuted only in the presence of the County Engineer.
 Before work can be started, the contractor must obtain a permit to excavate in County streets from the L.A. County Road Dept., 108 W. 2nd St. and make a deposit with the County Engineer, Rm. 518, 223 South Broadway, sufficient to cover the cost of construction inspection and record plans.
 Approval of this plan by the County of Los Angeles does not constitute a representation as to the accuracy of the location of or the existence or non-existence of any underground utility, pipe, or structure within the limits of this project. This note applies to all sheets.
 If work is to be done on a State Highway, a permit must be obtained from the State of California, Division of Highways, 120 South Spring Street.

COUNTY OF LOS ANGELES, CALIFORNIA
 Approved, John A. Lambie County Engineer
 Approved, A. M. Eason
 Chief Eng. COL. SAN. DIST. NO. 4.2
A. P. Collins
 Sanitation Engineer
A. M. Eason
 Chief Engineer

Checked by *R. L. Collins* 9-14-56
 Office of County Engineer, Reg. C. E. No. 7860

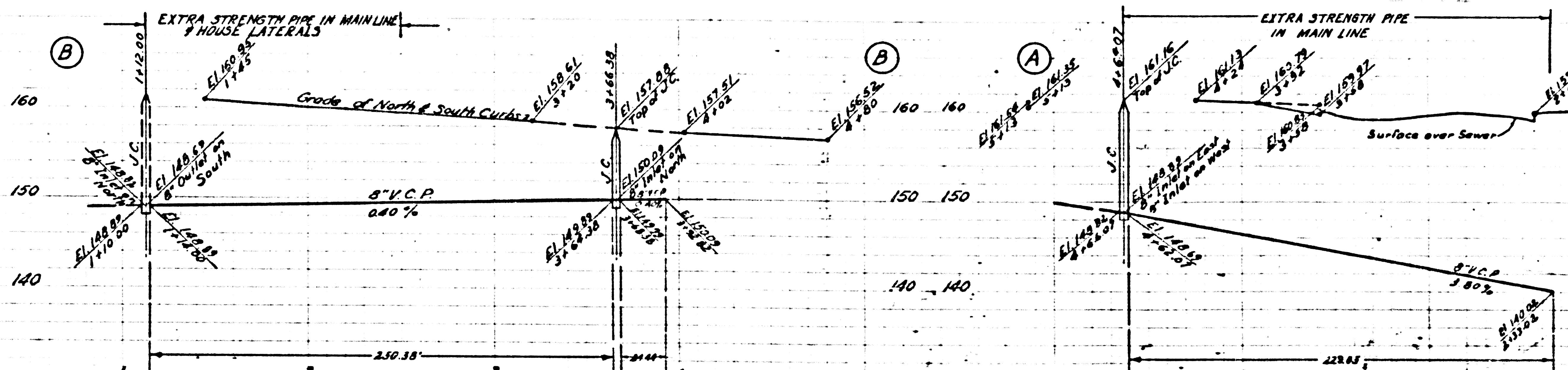
P.C. 3706
 Page 1
 Double Scale

23,462

(10)

P.C. 3706
 TRACT NO. 21841

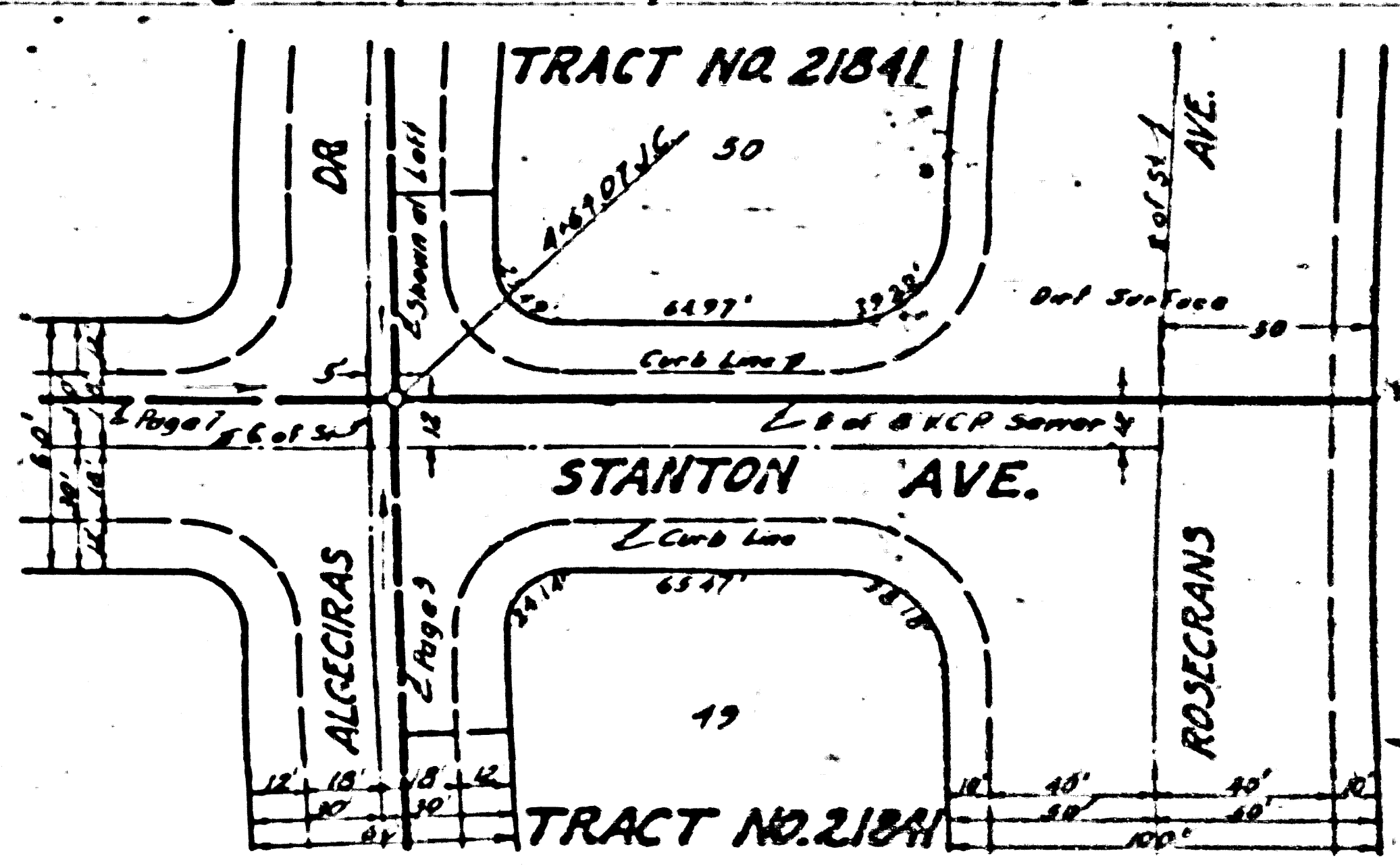
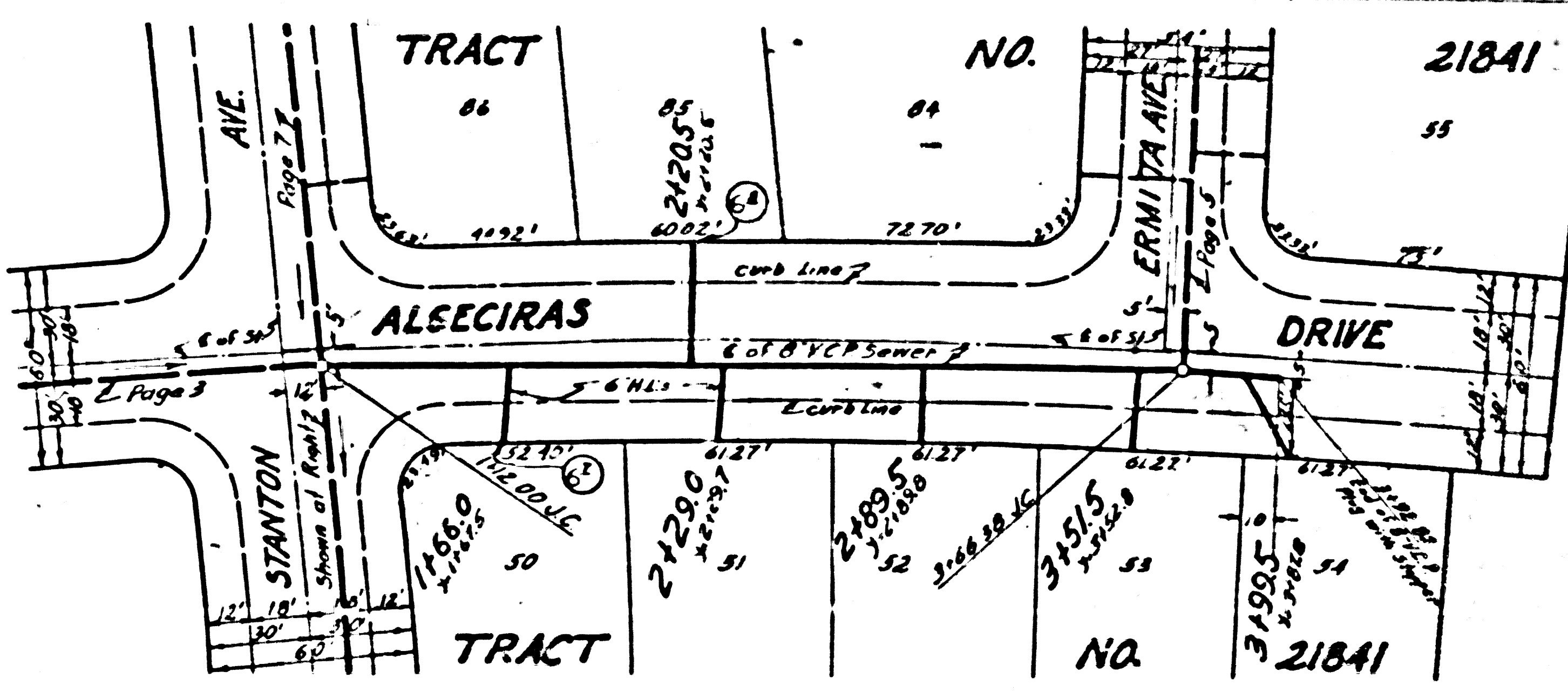
OG
SCALE
GE
CTIONS



PC. 3706
Page 2
Double Scale

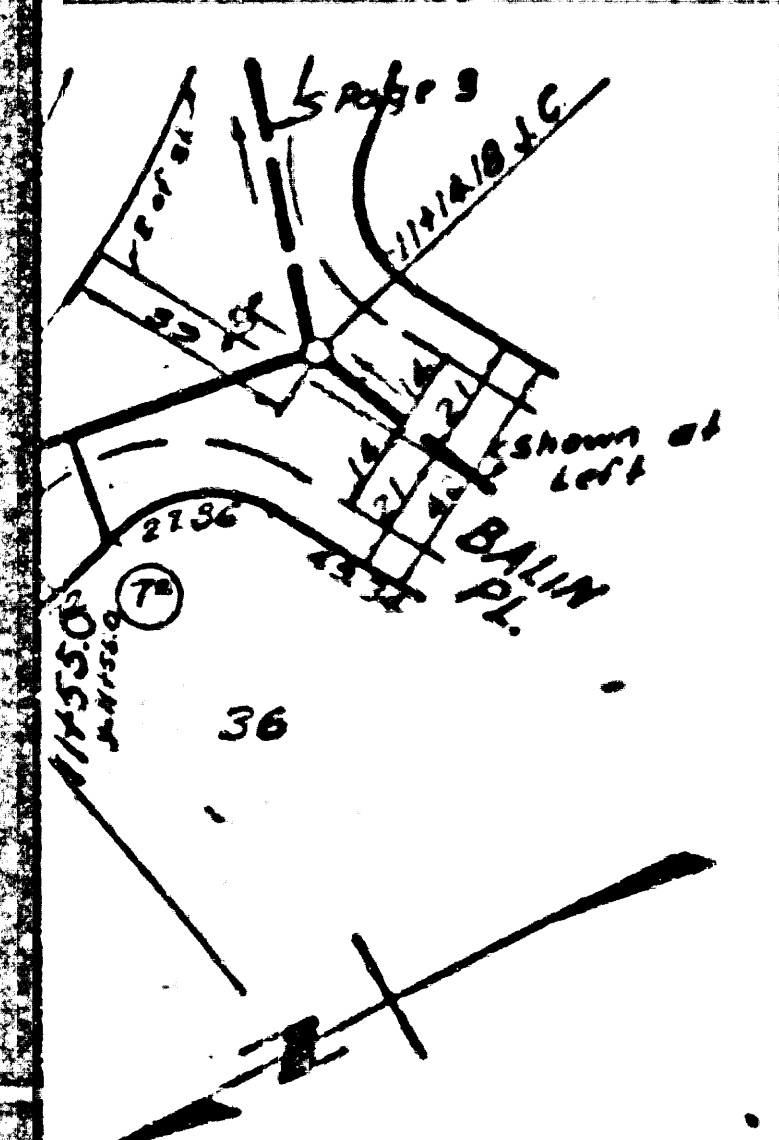
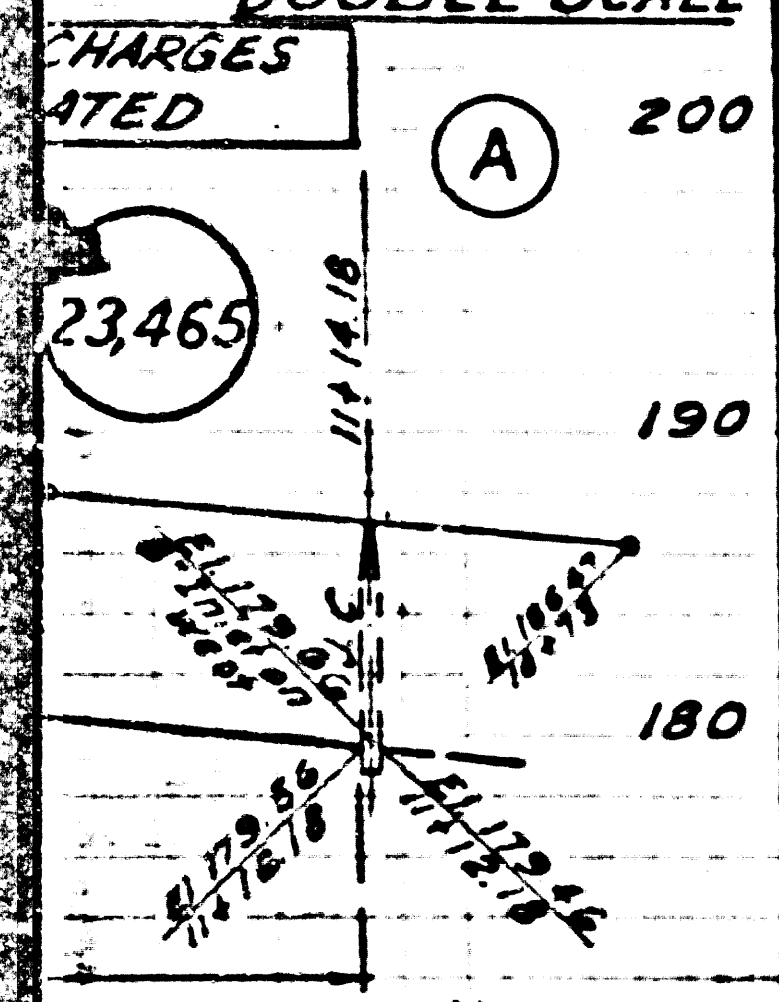
NO CHARGE FOR
CONNECTIONS

23463



29

P.C. 3706
Page 4
DOUBLE SCALE

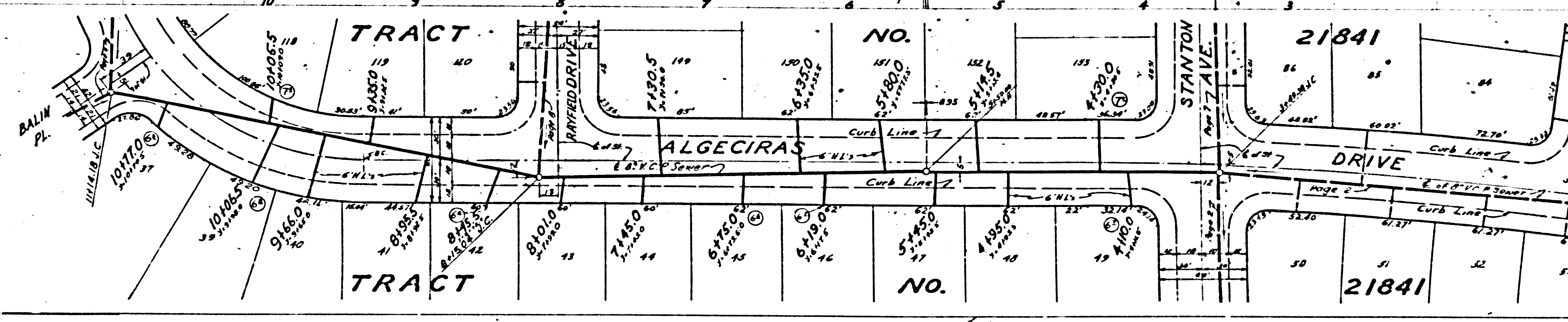
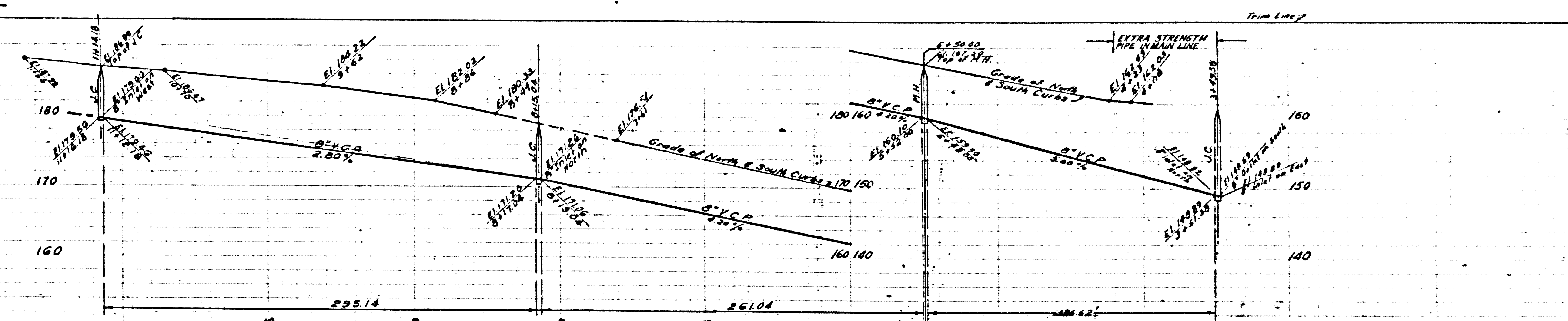


CHARGES
NOTED
(A) 200
190
180
170
160

36

10170
10165
9160
8155
7150
6145
5140
4135
3130
2125

11

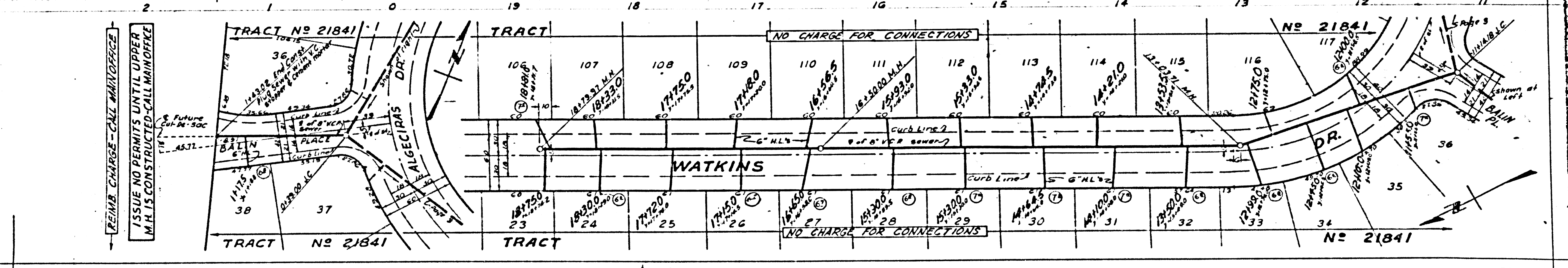
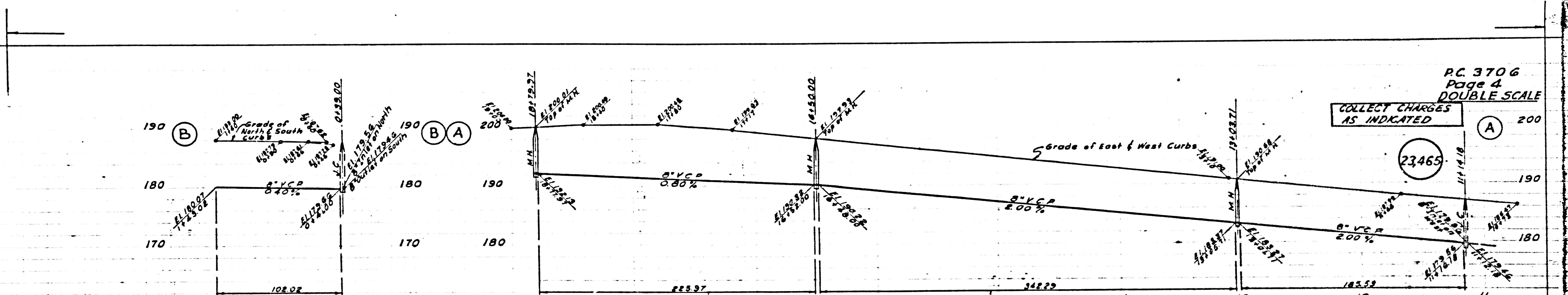
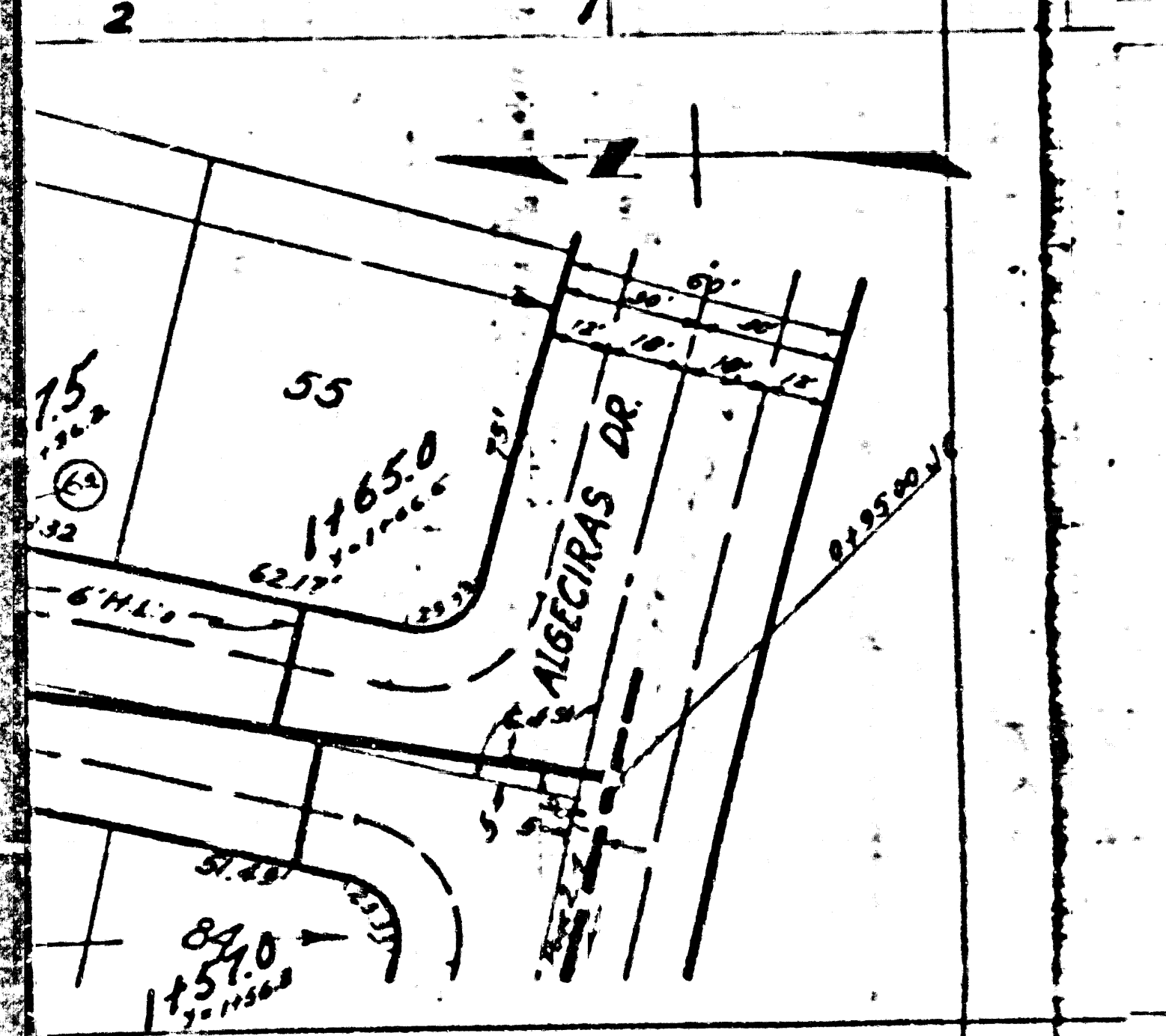
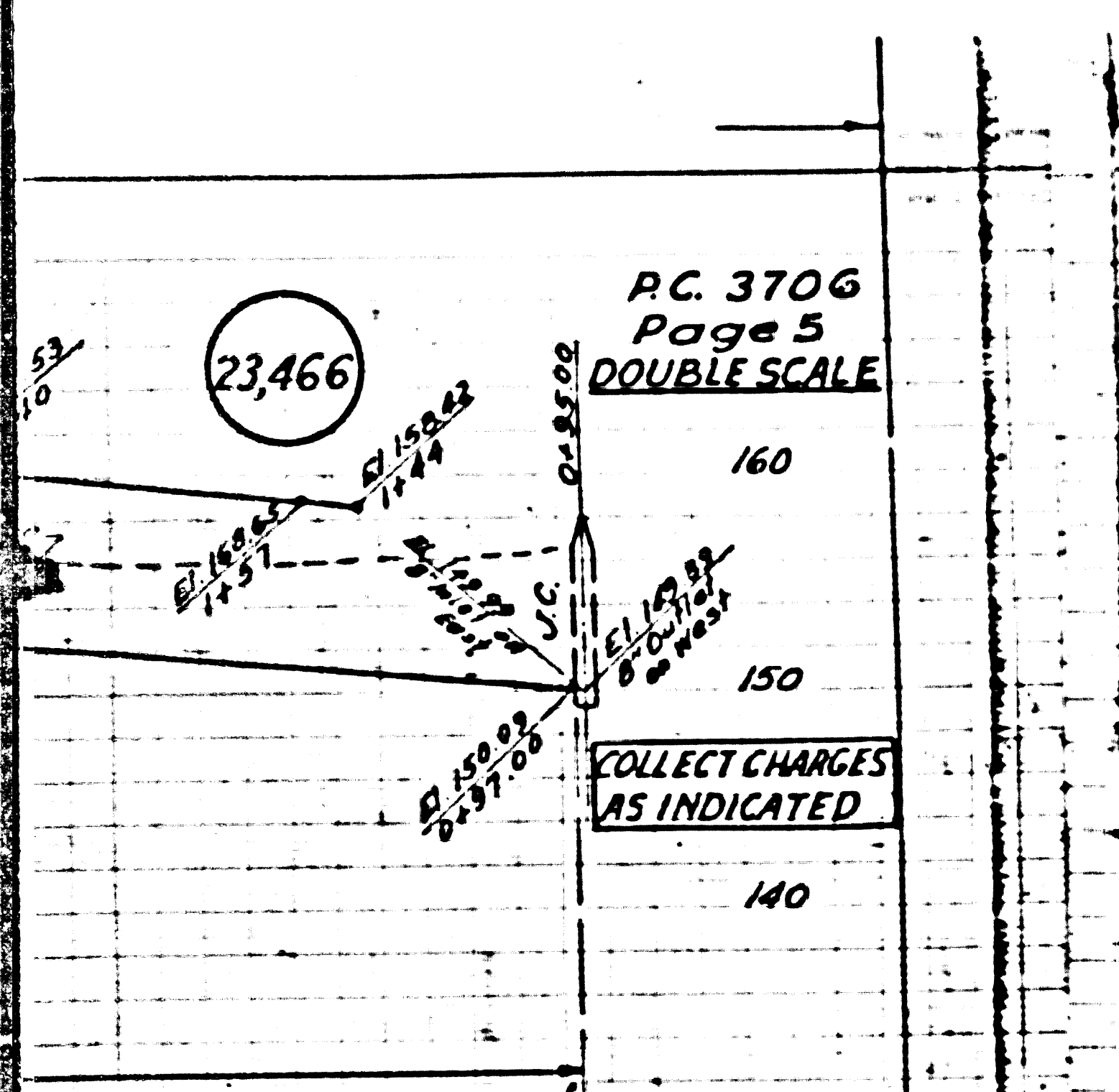


P.C. 3706
Page 3
DOUBLE SCALE

NO CHARGE
FOR CONNECTIONS

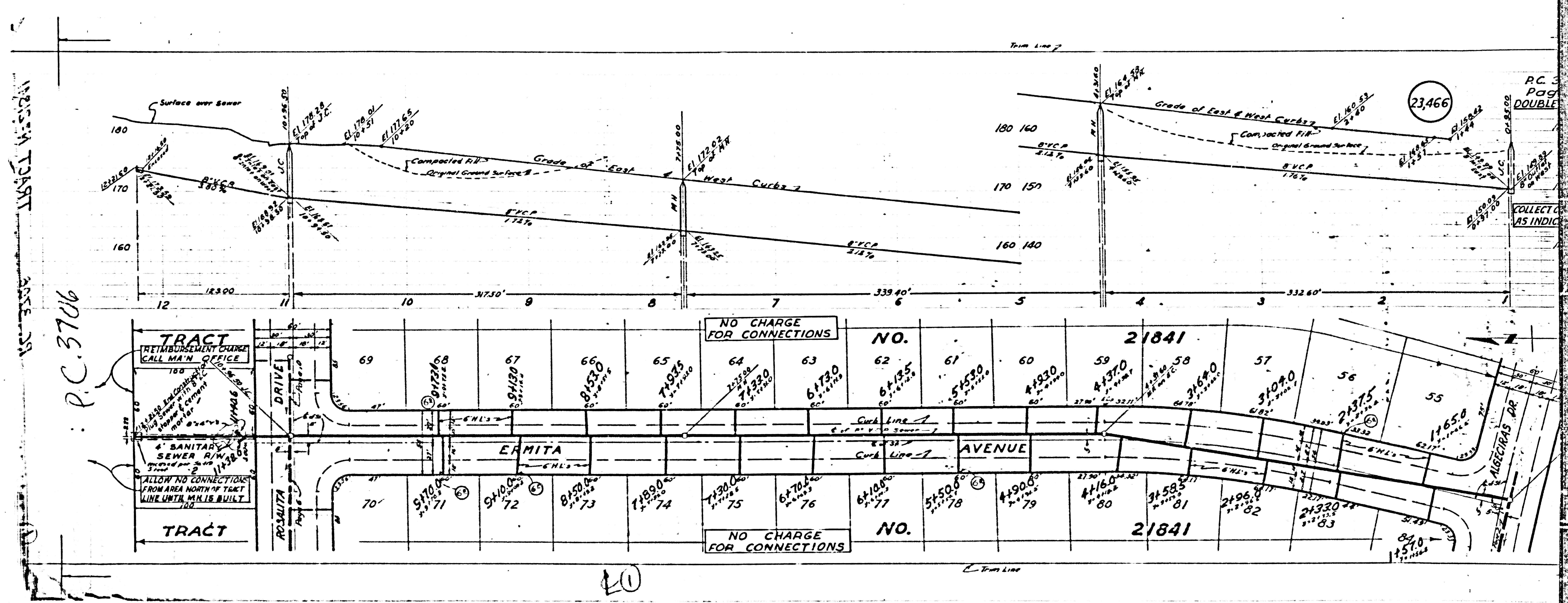
23464

3



REIMB. CHARGE - CALL MANHOLES
ISSUE NO PERMITS UNTIL UPPER
M.H.'S CONSTRUCTED - CALL MANHOLES

(C)



WIDE PART ASSESS

P.C. 3706

23466

P.C. 3
Page
DOUBLE
COLLECTOR
AS INDIC

20

P.C. 3706
Page 7
Double Scale

NO CHARGE FOR CONNECTIONS

170
160
150



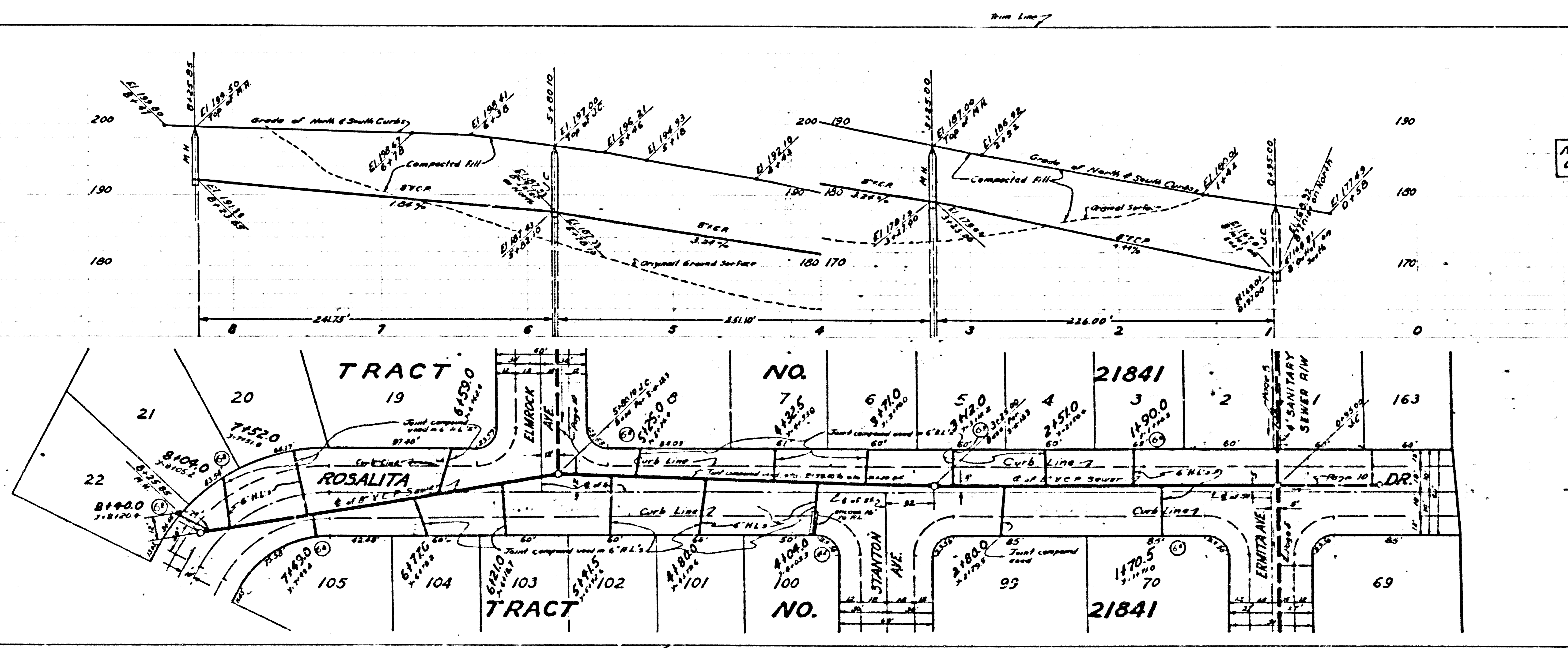
Page 7

P.C. 3706
Page 6
Double Scale

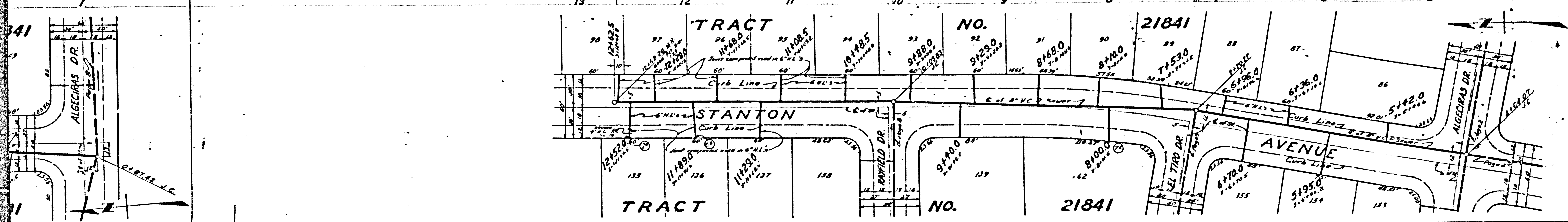
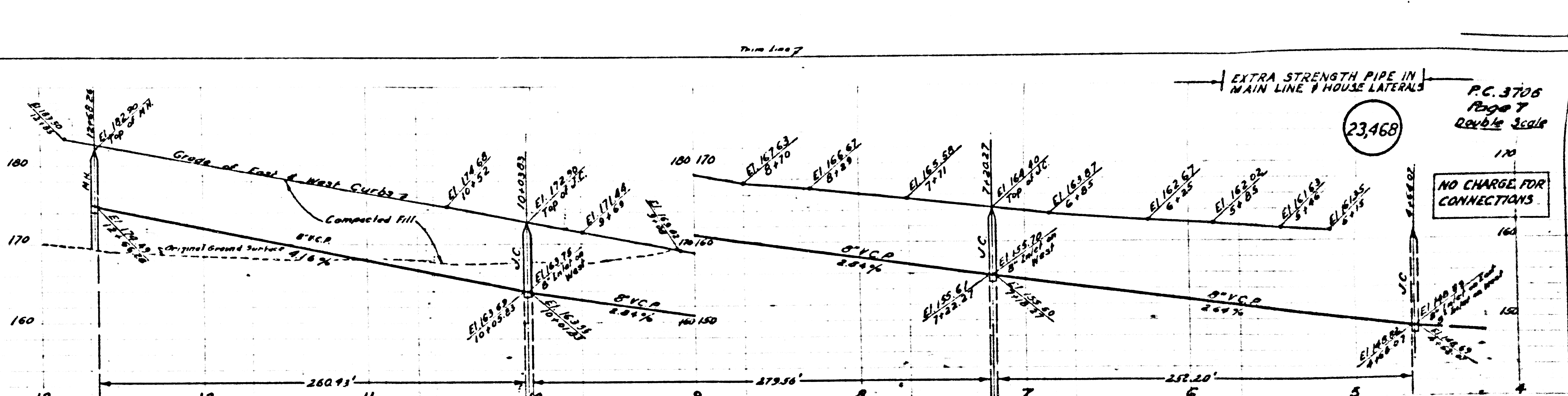
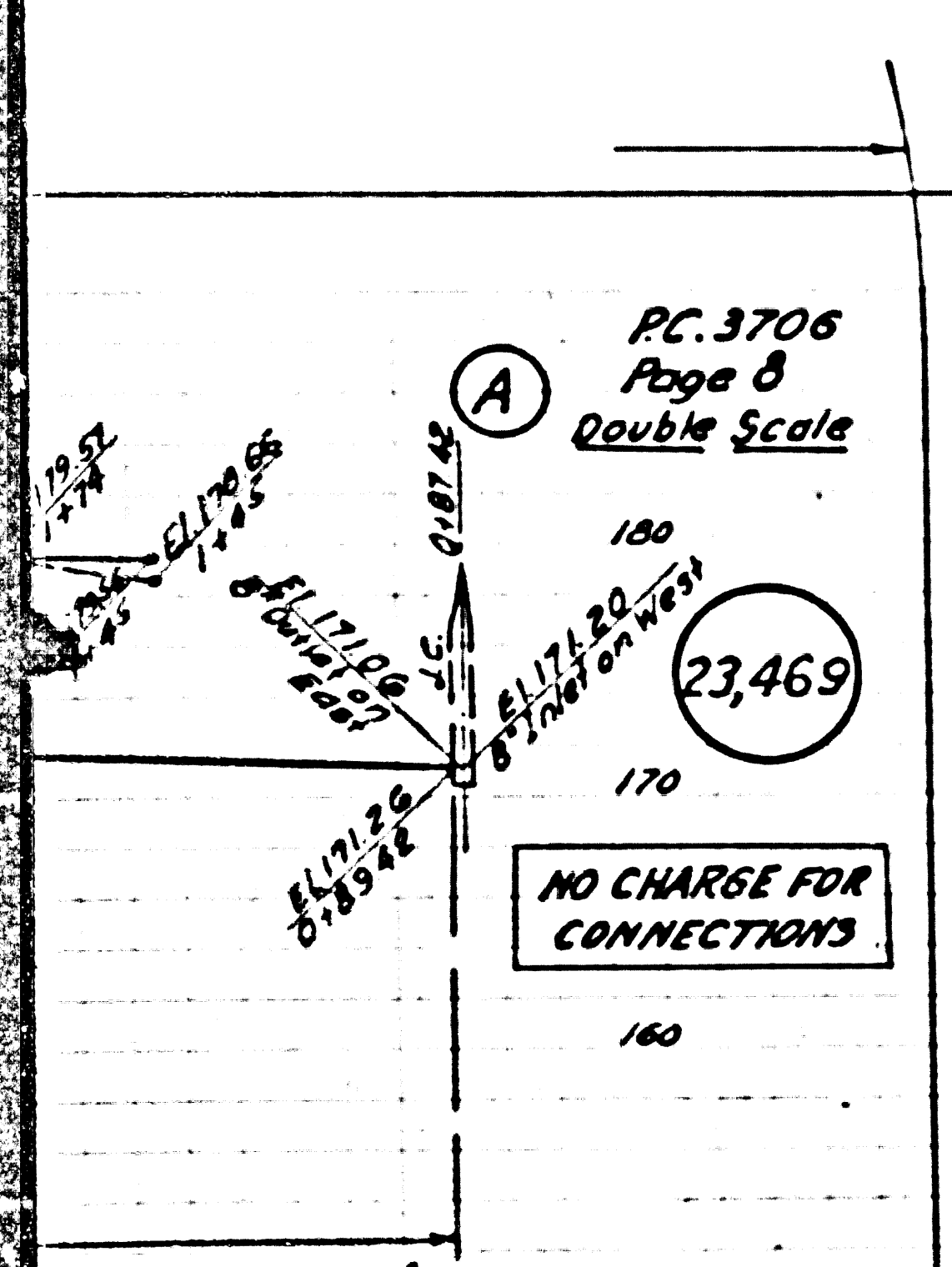
NO CHARGE FOR CONNECTIONS

23467

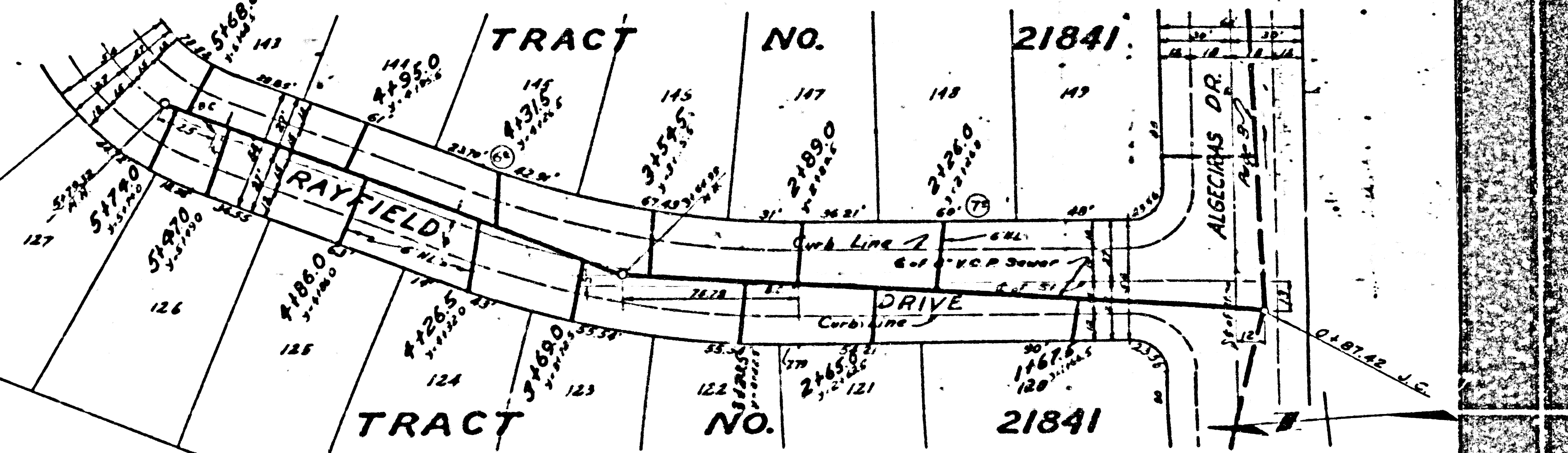
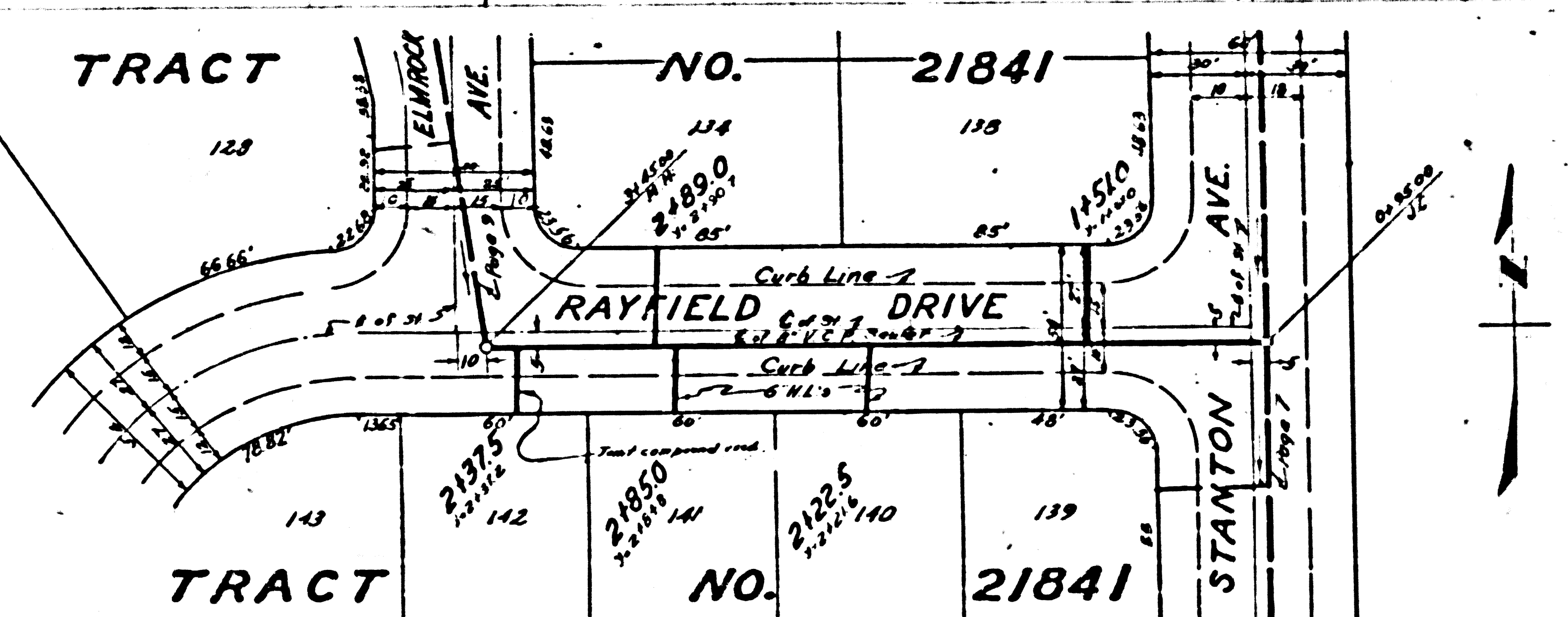
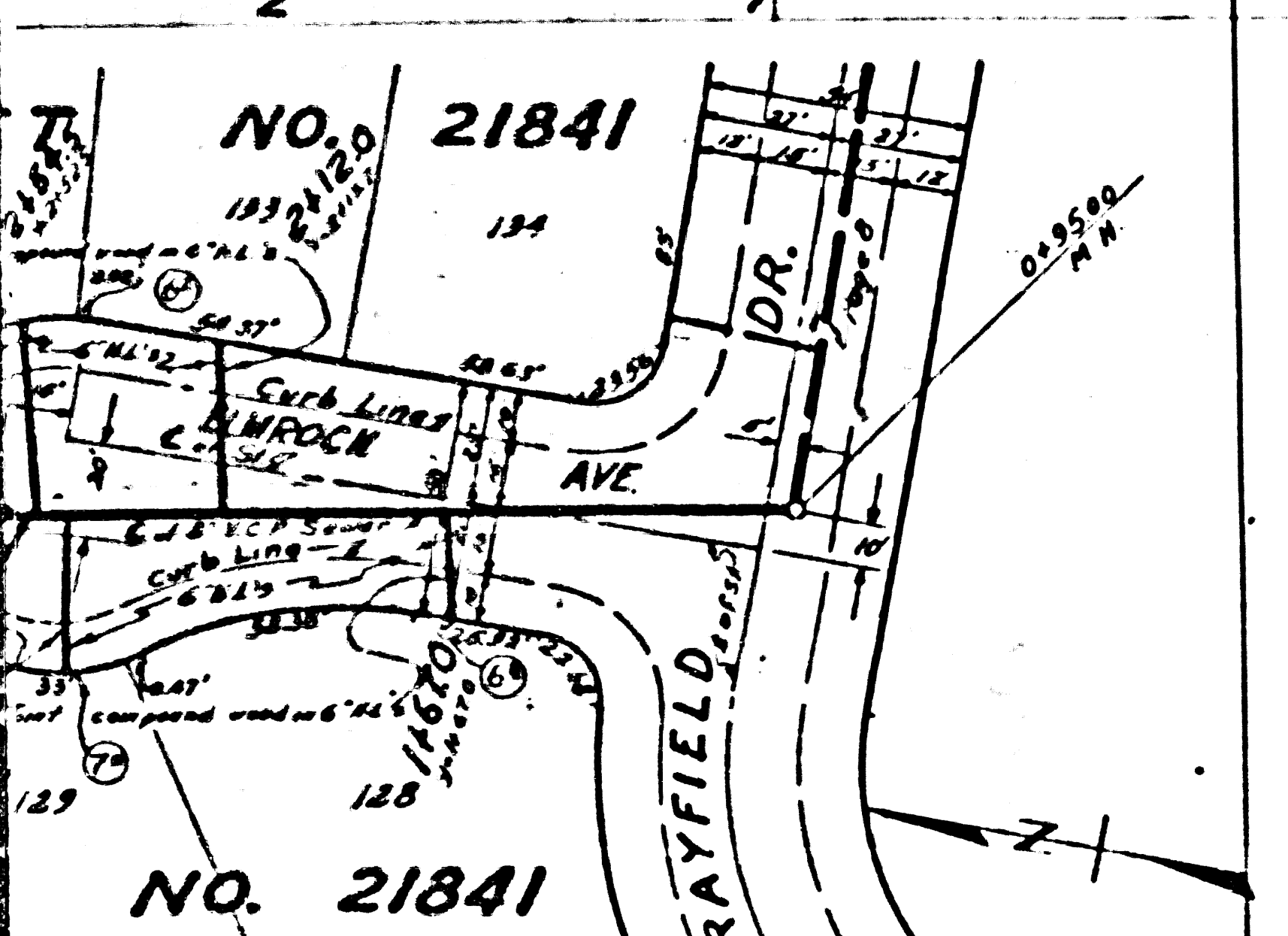
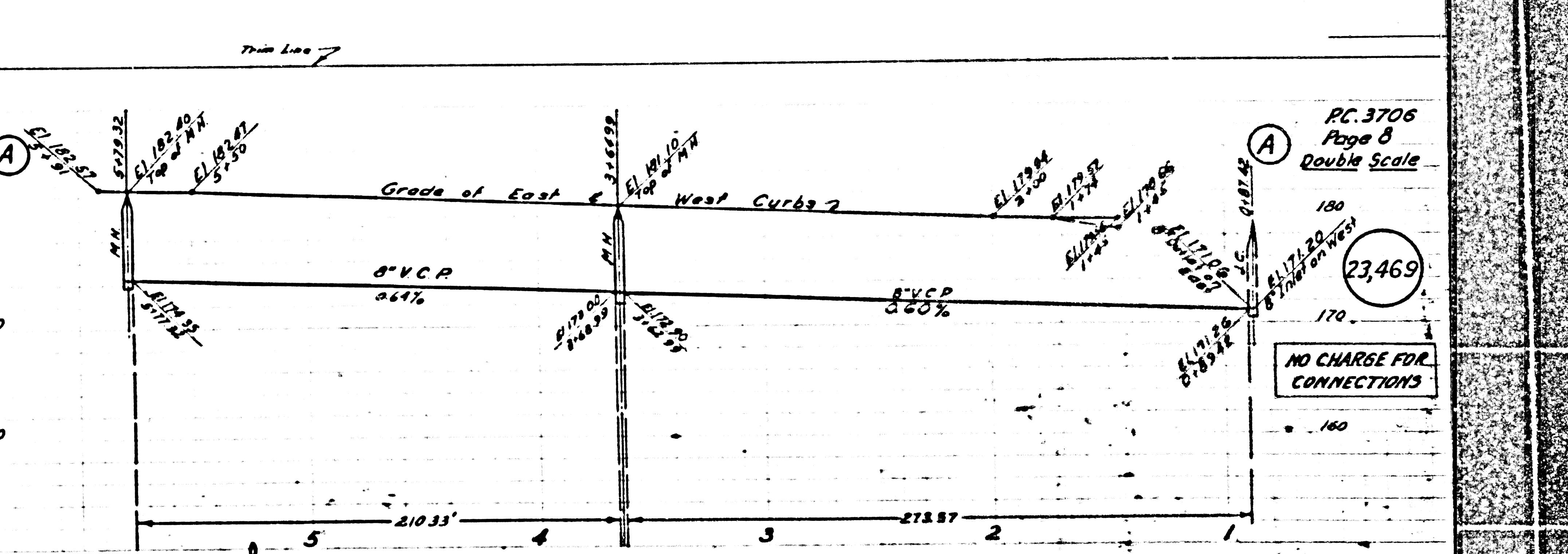
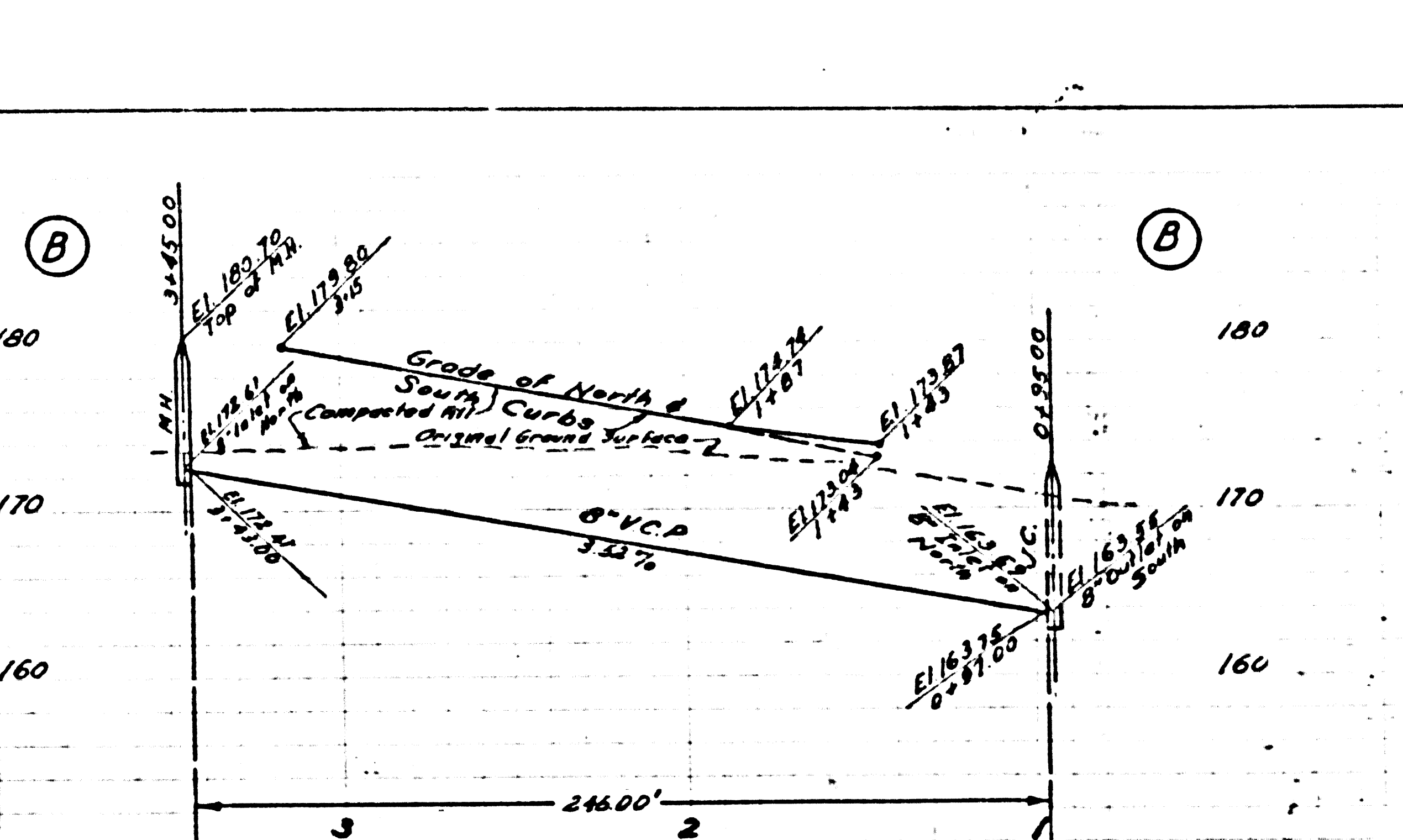
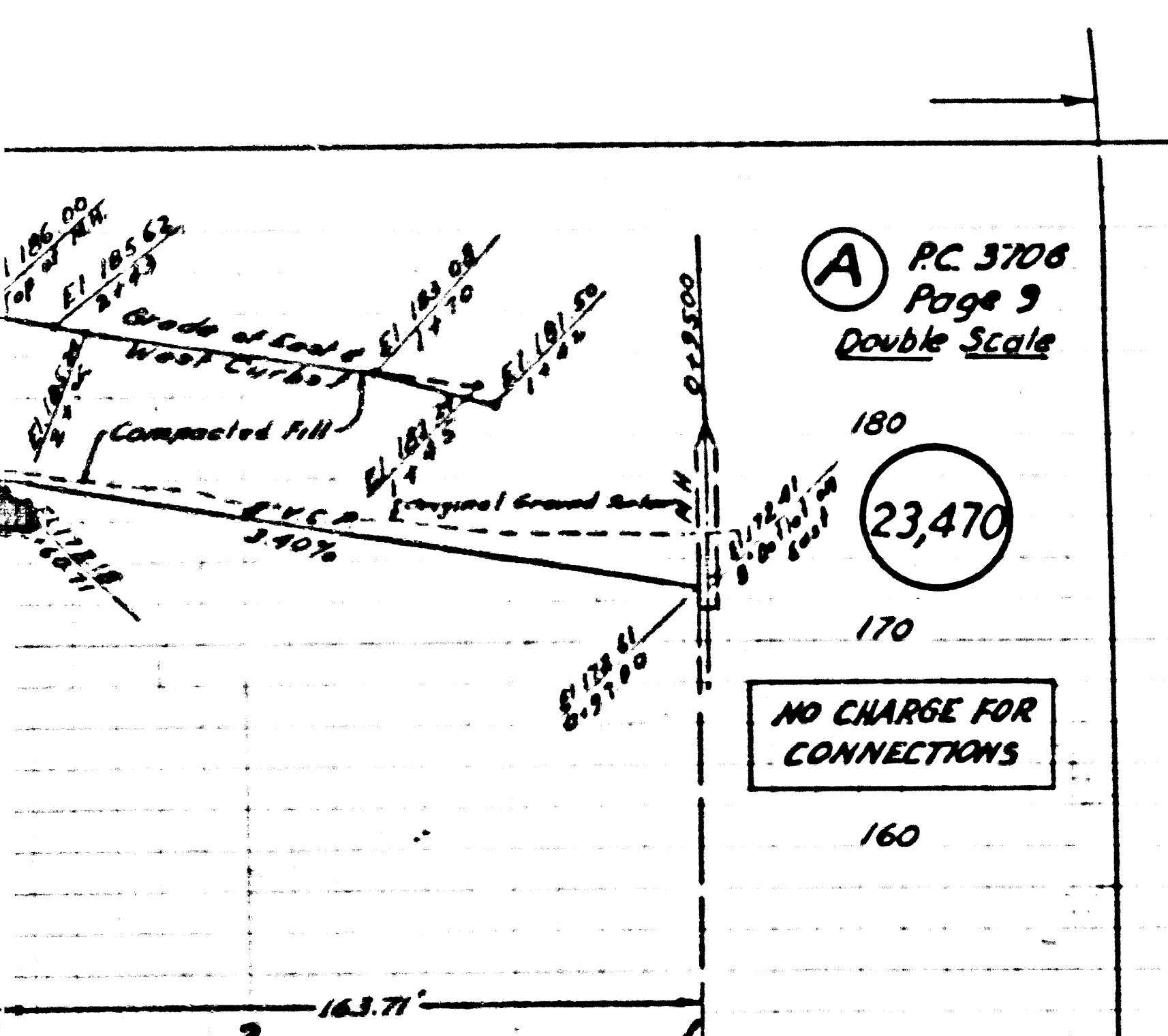
P.C. 3706
Page 6
Double Scale



NO. 105



14

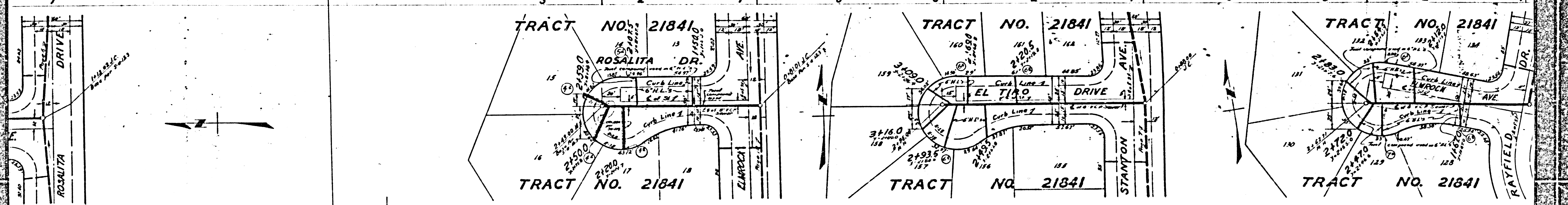
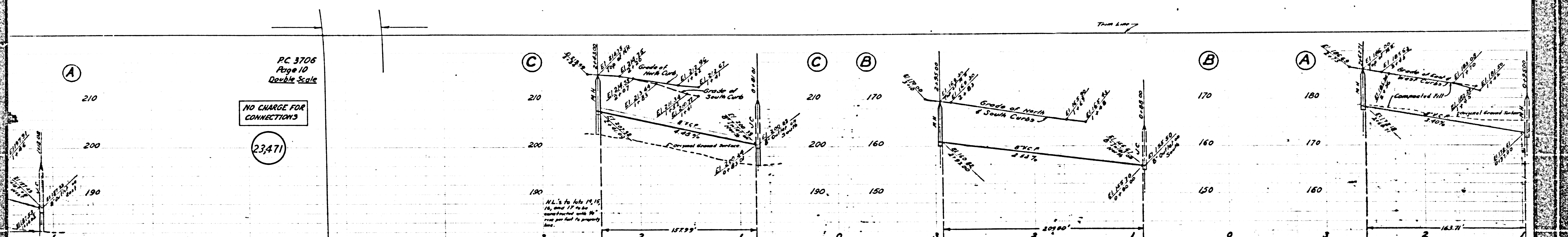


23

P.C. 3706
Page 10
Double Scale

NO CHARGE FOR
CONNECTIONS

23,471



10

