

P.C. 3709

PAGE 2

NO CHARGE FOR CONNECTIONS

22,202

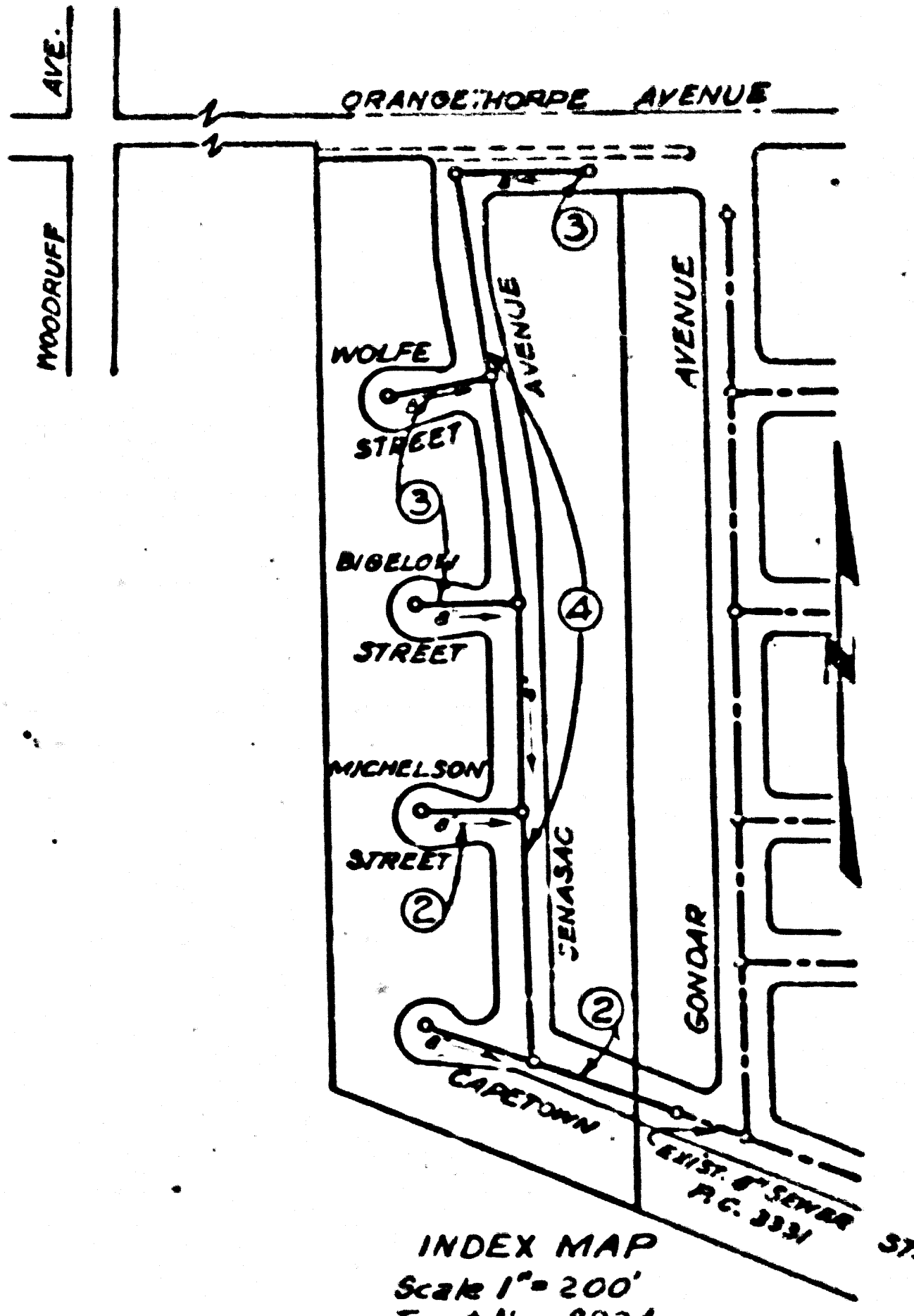
18282
7-23-24

BENCH MARK
SY-3691
Spk & L. in Conc. pavement 14' x 3/0
E. Orangeflorpe near E. driveway to House
#6016. 1954 Adj. Lien 54.426

PART OF
PAGE 1
P.C. 3709

TABLE

SHEET NO.	PAGES
1	1-4



INDEX MAP
Scale 1" = 200'
Tract No. 18924
P.C. 3709

BELLFLOWER BLDG. DIST. NO. 4

- NOTE:
- Provide stakes on the property lines or property lines produced at right angles to the sewer line at the center line of each manhole.
 - No representative of the County Engineer will survey or layout any portion of the work.
 - The owner or his authorized representative shall furnish the County Engineer with grade sheets and stations for all house laterals and Y branches and shall provide stakes for them at their proper locations with stationing plainly marked. Any change in location shall be reported in writing by the owner or his representative.
 - No revisions shall be made in these plans without the approval of the County Engineer.
 - Use standard manhole frames and covers, S-a-117.
 - Use standard strength pipe.
 - Use Joint Compound A or B for all vitrified pipe joints per Spec's. Sec. 81.
 - Resurface all trench within paved area to meet L. A. County Road Dept. or California State Highway Dept. requirements in accordance with parash.
 - Excise four feet of sewer at points of interference with poles, S-a-119.
 - House laterals to be constructed with laterals at property line 6 feet below curb grade.
 - All structures shall be brick sewer structures, S-a-104.
 - For allowable leakage test, use Formula No. 2, Spec's. Sec. 81.

NO CHARGE FOR CONNECTIONS
L. Curtis 12-5-55

PROFILE ALIGNMENT AND GRADE OF SANITARY SEWERS TO BE CONSTRUCTED IN TRACT NO. 18924

PRIVATE CONTRACT NO. 3709
W. S. 31

Scale: VERT. 1" = 4'
HORIZ. 1" = 40'
OCT. 1955
PREPARED IN THE OFFICES OF
V. CORHEIS - TRINDLE - NELSON, INC.
12492 GARDEN GROVE BLVD.
GARDEN GROVE, CALIF.

BY *C. P. Deane* AND C. E. No. 8781
FOR LEGEND SEE PLAN NO. S-a-64

NOTE:

Grades to which this improvement is to be constructed are shown on plans and profiles. Grade points for top of curb, center line of street, or center line of alley are shown by circles on profiles. At all points between designated points the grade shall be established so as to conform to a straight line drawn between said designated points.

Elevations are in feet above U.S.C.S. datum or mean sea level.

This drawing and the data hereon are hereby made a part of the specifications.

Work shall be constructed according to specifications on file in the office of the County Engineer and shall be prosecuted only in the presence of the County Engineer.

Before work can be started, the contractor must obtain a permit to excavate in County streets from the L.A. County Road Dept., 108 W. 1st St. and make a deposit with the County Engineer, Room 880, 2nd St. Sufficiently to cover the cost of construction inspection and record plans.

Approval of this plan by the County of Los Angeles does not constitute a representation as to the accuracy of the location of or the existence or non-existence of any underground utility, pipe, or structure within the limits of this project. This note applies to all sheets.

If work is to be done in a State Highway, a permit must be obtained from the State of California, Division of Highways, 120 South Spring Street.

COUNTY OF LOS ANGELES, CALIFORNIA

Approved, John A. Lambie, County Engineer
BY *A. P. Collins* Sanitation Engineer

Approved, A. M. Rowe
CHIEF ENGINEER, SANITATION DIST. NO. 4
BY *S. J. Johnson* Office Engineer

Checked By *R. K. Kuhn* 12-5-55
Office of County Engineer, P.C. E. No. 7860

P.C. 3709
PAGE 1

22,201

(4)

TRACT NO. 18924

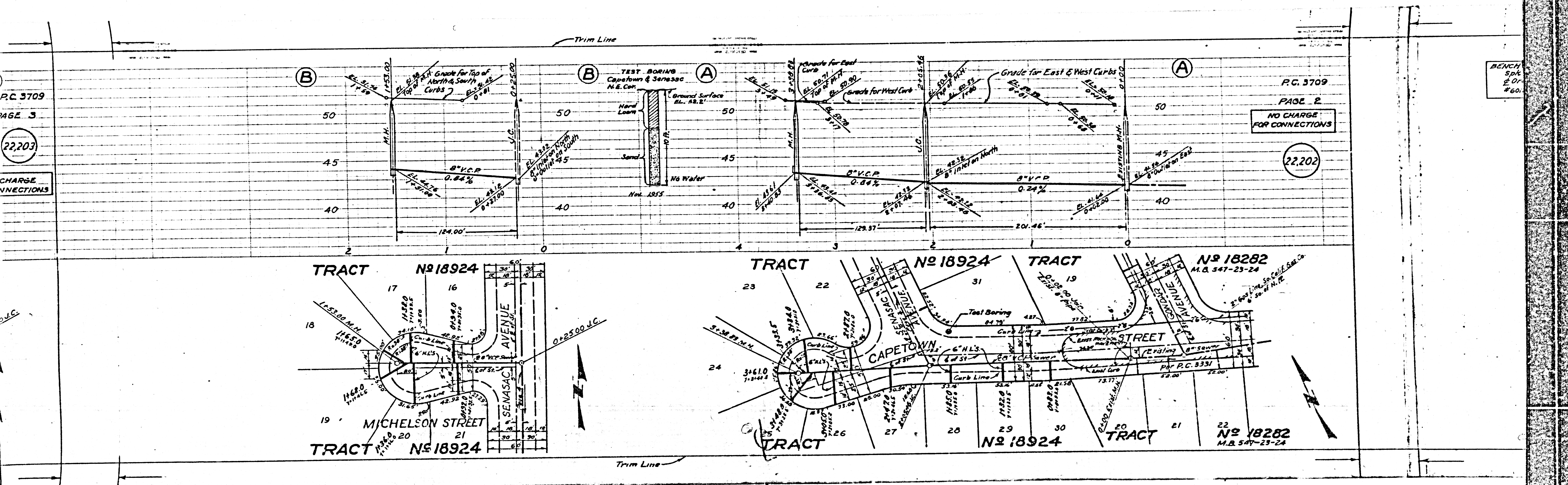
P.C. 3709
PAGE 1

18282
7-23-24

P.C. 3709
PAGE 3
22,203
CHARGE CONNECTIONS

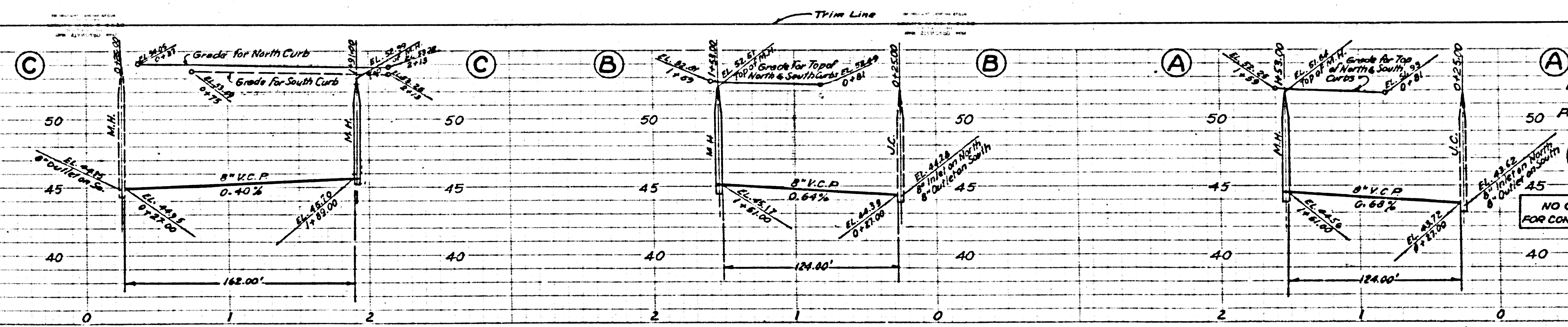
P.C. 3709
PAGE 2
NO CHARGE FOR CONNECTIONS
22,202

BENCH
Spk
201
#601

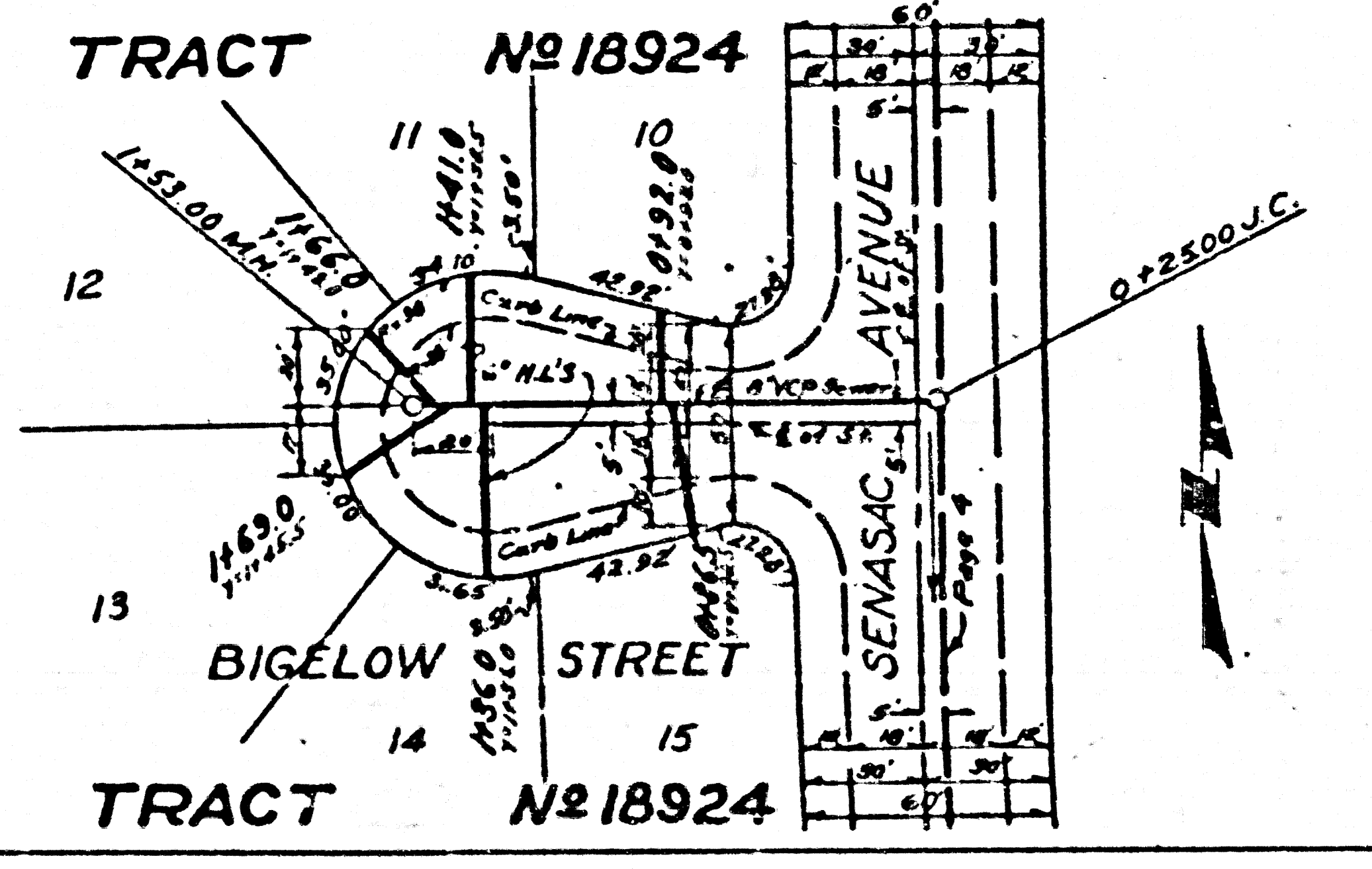
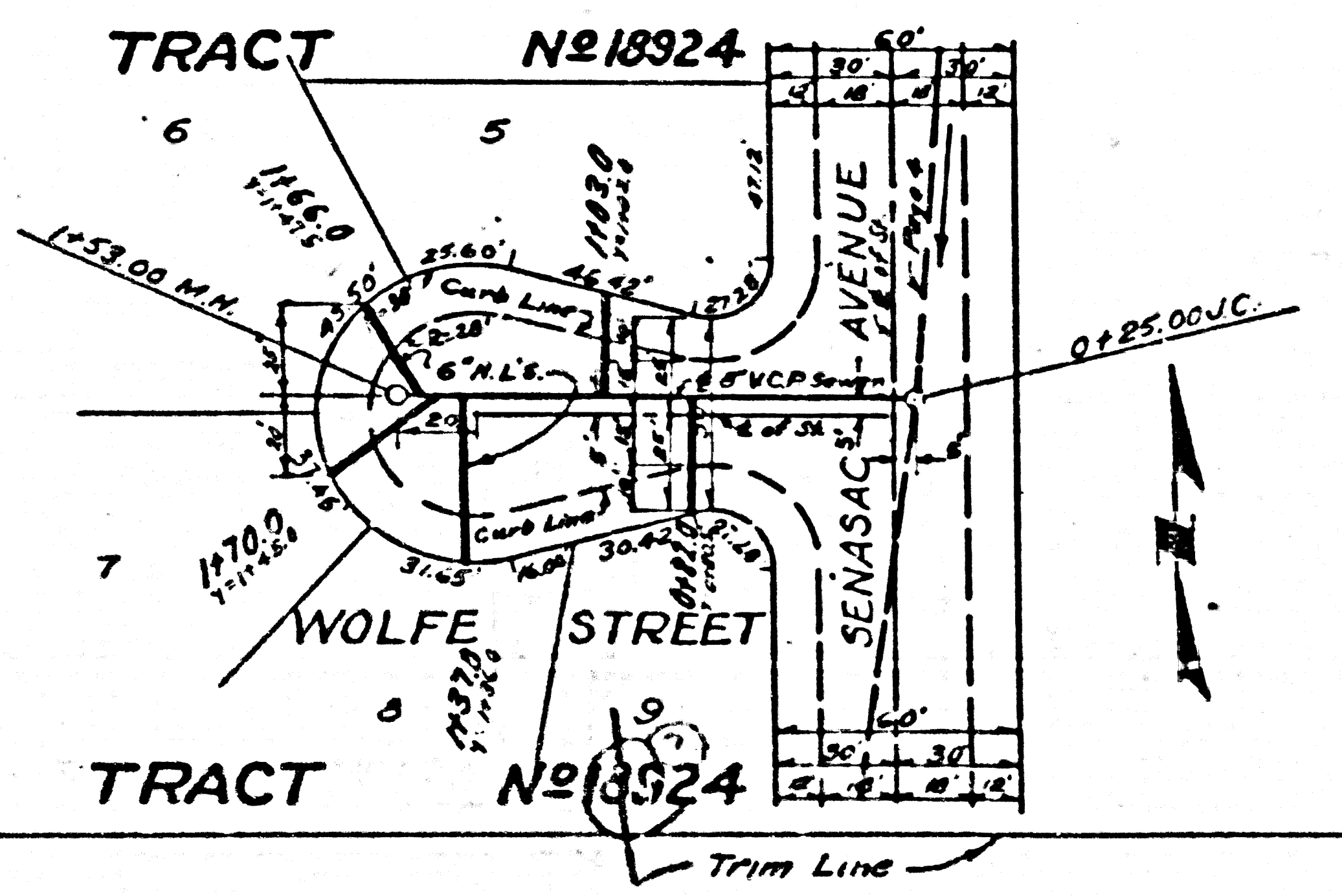
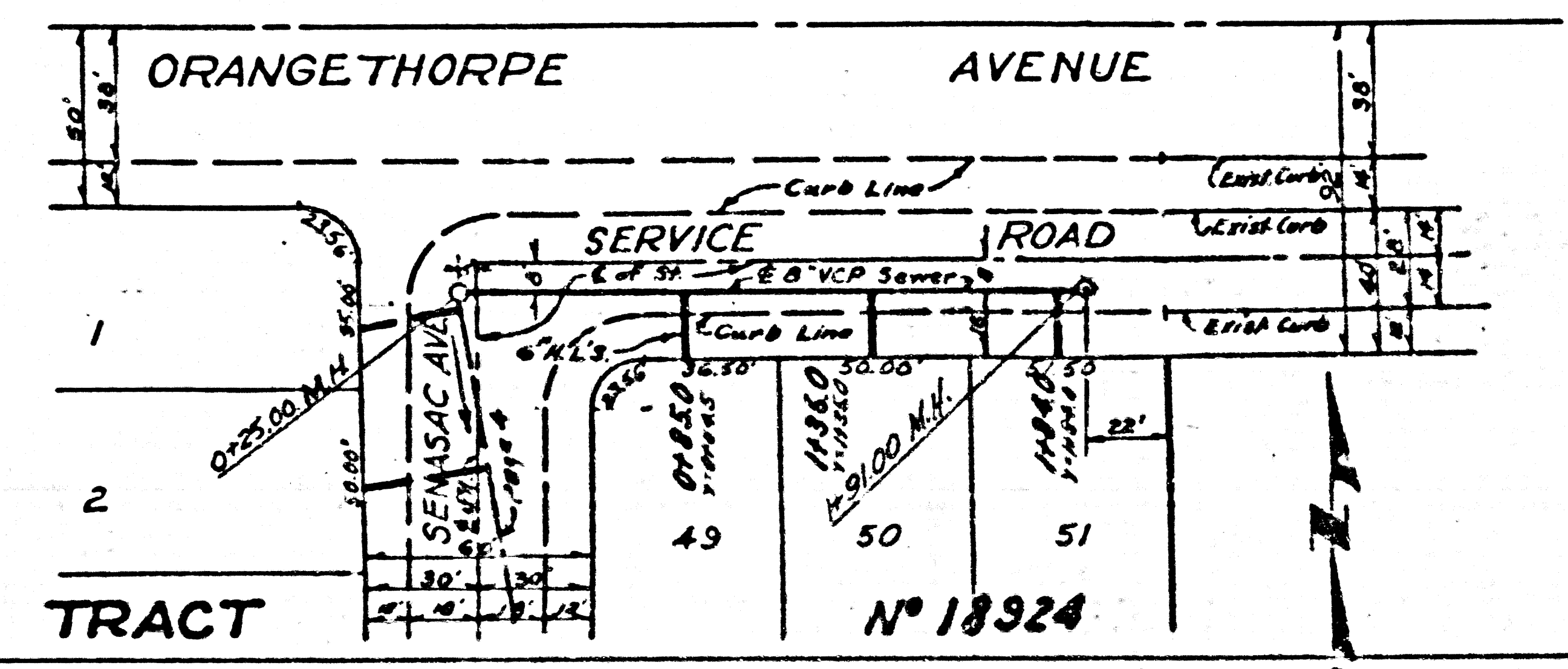


P.C. 3709
PAGE 4
CHARGE
SECTION

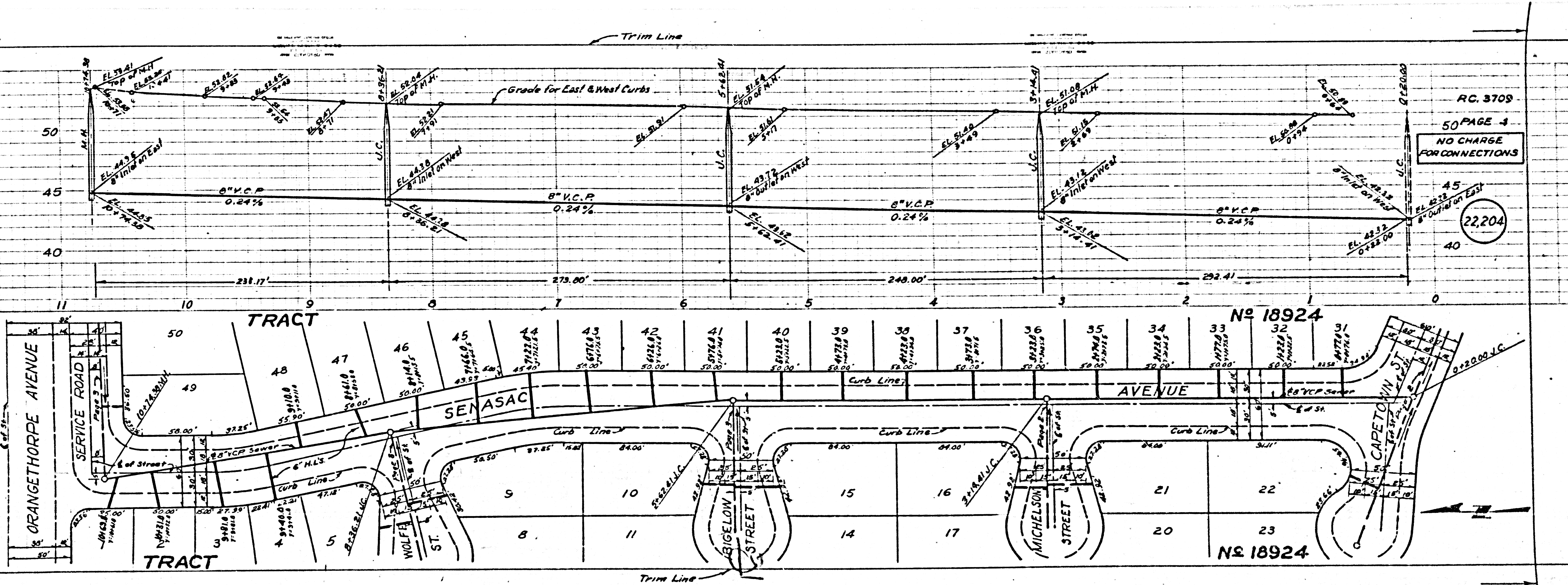
22,204



P.C. 3709
PAGE 3
22,203
NO CHARGE
FOR CONNECTIONS



PC 3709



RC. 3709
50 PAGE 4
NO CHARGE
FOR CONNECTIONS
22,204