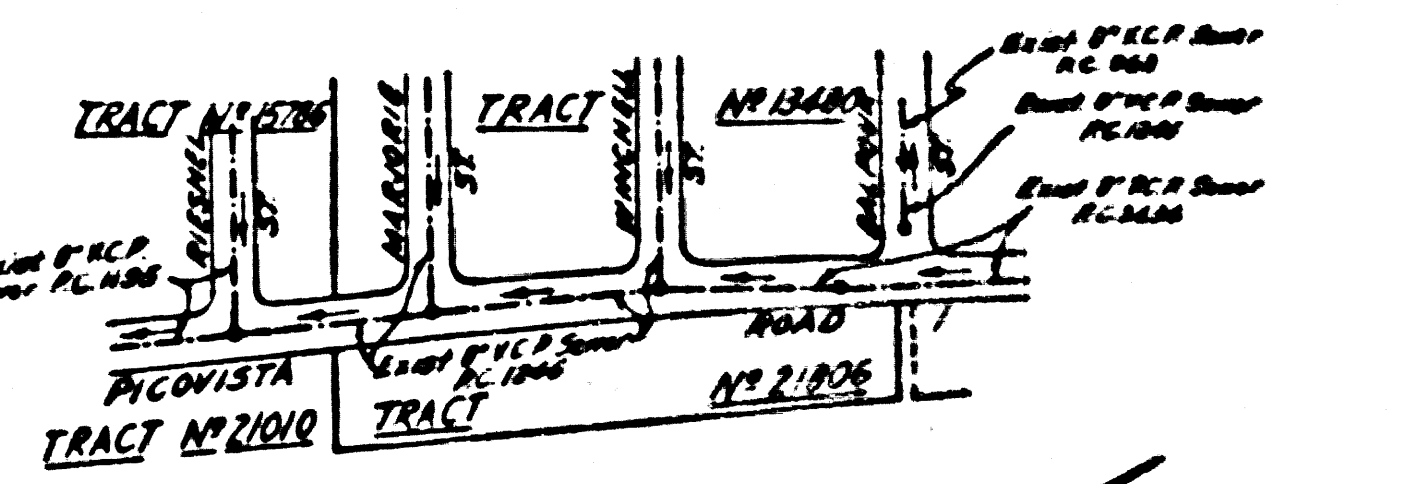


PAGE 2  
EG. 3711

NO CHARGE FOR CONNECTIONS

22,140



INDEX MAP  
Scale: 1"=300' TRACT No. 21806  
EG. 3711

NO CHARGE FOR CONNECTIONS  
J.K. Onda 10-12-55

Checked 1-19-56 [Signature]

WHITTIER BLDG. DIST. N<sup>o</sup> 11

- NOTE:
1. Provide stakes on the property lines or property lines produced at right angles to the sewer line at the center line of each manhole.
  2. No representative of the County Engineer will survey or layout any portion of the work.
  3. The owner or his authorized representative shall furnish the County Engineer with grade sheets and stations for all house laterals and Y branches and shall provide stakes for these at their proper locations with stationing plainly marked. Any change in location shall be requested in writing by the owner or his representative.
  4. No revisions shall be made in these plans without the approval of the County Engineer.
  5. Use standard manhole frames and covers, S-a-117.
  6. Use standard strength pipe except as noted.
  7. Use cement mortar for all vitrified clay pipe joints.
  8. Resurface all trench within paved areas to meet L. A. County Road Dept. or California State Highway Dept. requirements in accordance with permit.
  9. Encase four feet of sewer at points of interference with poles, S-a-119.
  10. House laterals to be constructed with inverts at property line  $\frac{1}{2}$  foot below curb grade except as noted.
  11. All structures shall be brick sewer structures, S-a-104.
  12. For allowable leakage test, use Formula No. 1, Spec's., Sec. 51.
  13. Manhole tops in unimproved Rights-Of-Way to be 6" above finish grade.

SHEET NO.	PAGES
1	1-2

PROFILE, ALIGNMENT AND GRADE OF  
SANITARY SEWERS  
TO BE CONSTRUCTED IN

TRACT N<sup>o</sup> 21806

PRIVATE CONTRACT NO. 3711  
W. S. 36  
1 SHEET

Scale: VERT. 1"=4' HORIZ. 1"=40' SEPT-1955  
PREPARED IN THE OFFICES OF

KEMMERER ENGINEERING CO. INC.  
By J. C. Thomas Reg. C. E. No. 8194

FOR LEGEND SEE PLAN NO. S-a-64

NOTE:

Grades to which the improvement is to be constructed are shown on plans and profiles. Grade points for top of curbs, center line of streets, or quarter line of alleys are shown by circles on profiles. At all points between designated points the grade shall be established so as to conform to a straight line drawn between said designated points.

Elevations are in feet above U.S.C.S. datum or mean sea level.

This drawing and the data hereon are hereby made a part of the specifications.

Work shall be constructed according to specifications on file in the office of the County Engineer and shall be prosecuted only in the presence of the County Engineer.

Before work can be started, the contractor must obtain a permit to excavate in County streets from the L.A. County Road Dept., 156 W. 1st St. and make a deposit with the County Engineer, Room 324, 233 South Broadway, sufficient to cover the cost of construction inspection and record plans.

Approval of this plan by the County of Los Angeles does not constitute a representation as to the accuracy of the facts or of the existence or non-existence of any underground utility, pipe, or structure within the limits of this project. This note applies to all sheets.

If work is to be done in a State Highway, a permit must be obtained from the State of California, Division of Highways, 128 South Spring Street.

COUNTY OF LOS ANGELES, CALIFORNIA

Approved, J. A. Lamb, County Engineer

Approved, A. M. Rowe, CHIEF ENGR. CO. SAN. DIST. NO. 2

By A. P. Collins, R. K. [Signature]  
Sanitary Engineer Office Engineer

Checked by R. K. [Signature] 10-13-55  
Office of County Engineer, Reg. C. E. No. 7860

PAGE 1  
PG. 3711

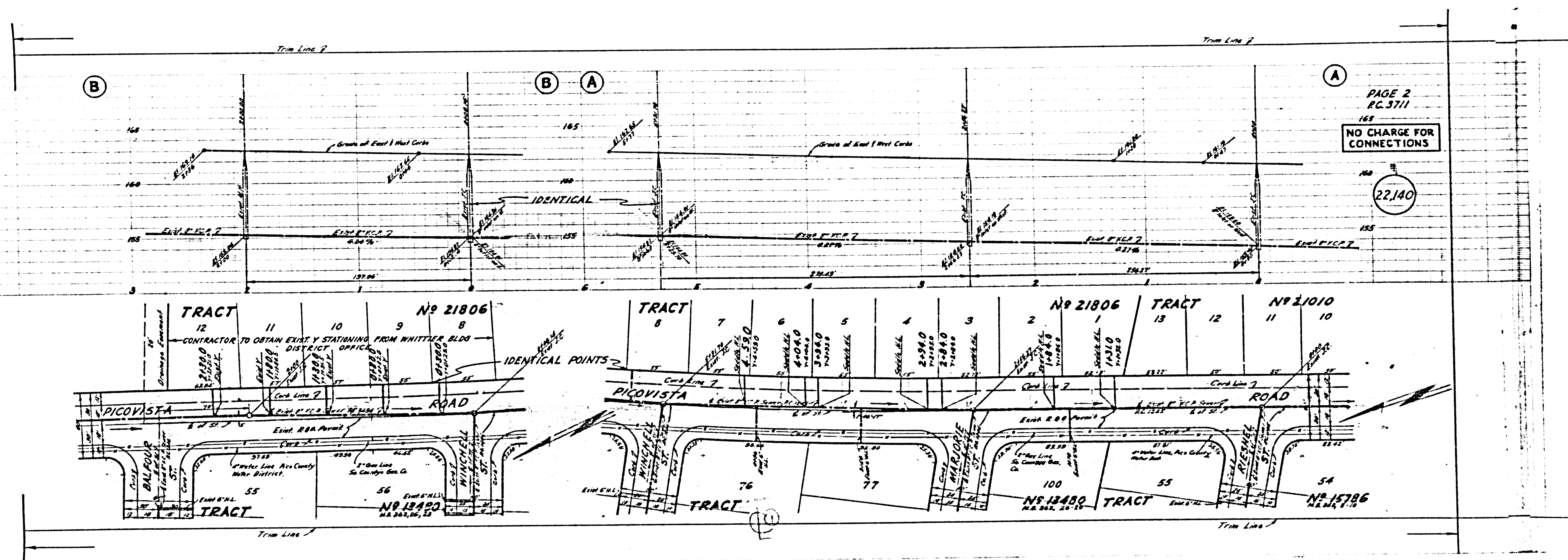
22,139

(2)

B.C. 311

[Signature]

PC 3711



PAGE 2  
 PC 3711  
 165  
 NO CHARGE FOR CONNECTIONS

22,140

TRACT 12 11 10 9 8  
 No. 21806  
 CONTRACTOR TO OBTAIN EXIST. Y STATIONING FROM WHITTIER BLDG DISTRICT OFFICE  
 TRACT 7 6 5 4 3 2 1  
 No. 21806  
 TRACT 13 12 11 10  
 No. 21010  
 IDENTICAL POINTS  
 PICOVISTA ROAD  
 TRACT 55  
 No. 13480  
 TRACT 76 77  
 TRACT 100  
 No. 13480  
 TRACT 55  
 TRACT 54  
 No. 15786