

P.C. 3712
PAGE 2

NO CHARGE FOR
CONNECTIONS

485

22,668

480

NR 18749

47

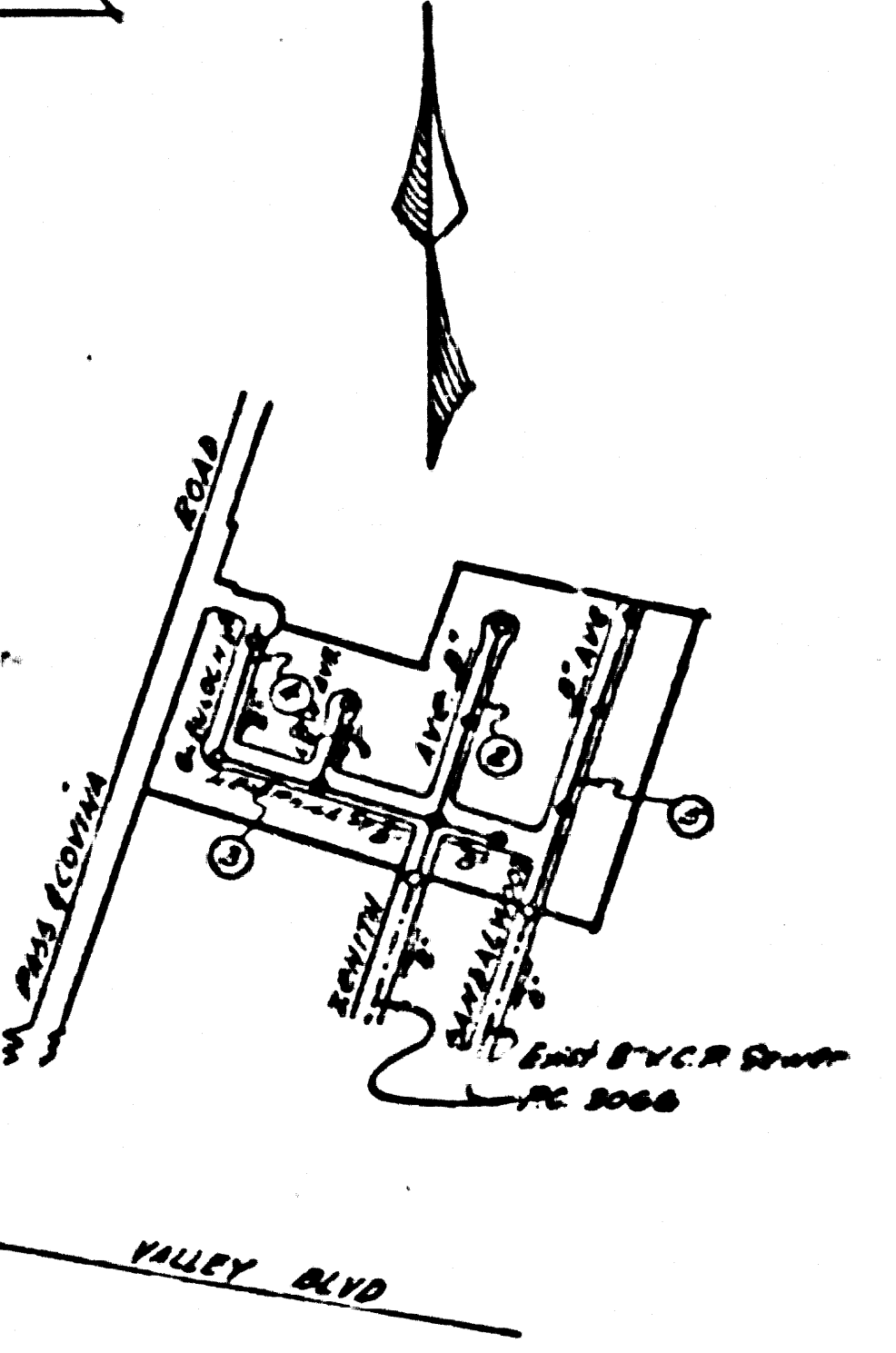
48

AVENUE 4455

NR 18749

NR 18749

BENCH MARKS 66 1878, Lead & Bench
mark in center of curb return at N. end of service
road of Gemini St. 48' E of E. of Post And Olive
St. 64' 4.8. 755



INDEX MAP
TRACT # 21772
SCALE 2 1/2" = 600'
P.C. 3712

TriA Line 7
PUENTE BLDG. DIST. N^o 2

- NOTE:
1. Provide stakes on the property lines or 100 survey lines indicated at right angles to the center line of the sewer.
 2. No representative of the County Engineer will survey or layout any portion of the work.
 3. The owner or his authorized representative shall furnish the County Engineer with grade sheets and stations for all house laterals and Y branches and shall provide stakes for them at their proper locations with stationing plainly marked. Any change in location shall be requested in writing by the owner or his representative.
 4. No revisions shall be made in these plans without the approval of the County Engineer.
 5. Use standard manhole frames and covers, S-a-117.
 6. Use standard strength pipe except as noted.
 7. Use cement mortar for all vitrified clay pipe joints.
 8. Resurface all trench within paved area to meet L.A. County Road Dept. or California State High-way Dept. requirements in accordance with plans.
 9. Excise four feet of sewer at points of interference with poles, S-a-119.
 10. House laterals to be constructed with inverts at property line 6" feet below curb grade.
 11. All structures shall be brick sewer structures, S-a-104.
 12. For allowable leakage test, use Formula No. 2, Spec's., Sec. 51.
 13. Manhole tops in unimproved Right-of-Way to be 6" above finish grade.

SHEET	PAGES
1	1-5

NO CHARGE FOR
CONNECTIONS
L. Curtis 10-10-55

PROFILE, ALIGNMENT AND GRADE OF
SANITARY SEWERS
TO BE CONSTRUCTED IN

TRACT N^o 21772

PRIVATE CONTRACT NO. 3712
W. S. 98
ONE SHEET

Scale: VERT. 1" = 4'
HORIZ. 1" = 40'
SEPT., 1955
PREPARED IN THE OFFICES OF

Robert H. Selberg
Reg. C.E. No. 8109
FOR LEGEND SEE PLAN NO. S-a-64

NOTE:

Grades to which this improvement is to be constructed are shown on plans and profiles. Grade points for top of curbs, center line of streets, or center line of alleys are shown by circles on profiles. At all points between designated points the grade shall be established so as to conform to a straight line drawn between said designated points.

Elevations are in feet above U.S.G.S. datum or mean sea level.

This drawing and the data hereon are hereby made a part of the specifications.

Work shall be prosecuted only in the presence of the County Engineer.

Before work can be started, the contractor must obtain a permit to excavate in County streets from the L.A. County Road Dept., 108 W. 2nd St. and make a deposit with the County Engineer, 253 South Broadway, Room 324, sufficient to cover the cost of construction inspection and record plans.

Approval of this plan by the County of Los Angeles does not constitute a representation as to the accuracy of the location of or the existence or non-existence of any underground utility, pipe, or structure within the limits of this project. This note applies to all sheets.

If work is to be done in a State Highway, a permit must be obtained from the State of California, Division of Highways, 120 South Spring Street.

COUNTY OF LOS ANGELES, CALIFORNIA

Approved: John A. Lombard, County Engineer

Approved: A. M. Row

Checked by: *A.P. Collins*

Checked by: *Ret. 10-22-55*

Office of County Engineer, Reg. C. E. No. 7860

P.C. 3712
PAGE 1

22,667

(5)

Checked 5-15-56 *M. L. Green*

Rd.

P.C. 3712
PAGE 3

NO CHARGE FOR
CONNECTIONS

22,669

435

430

425

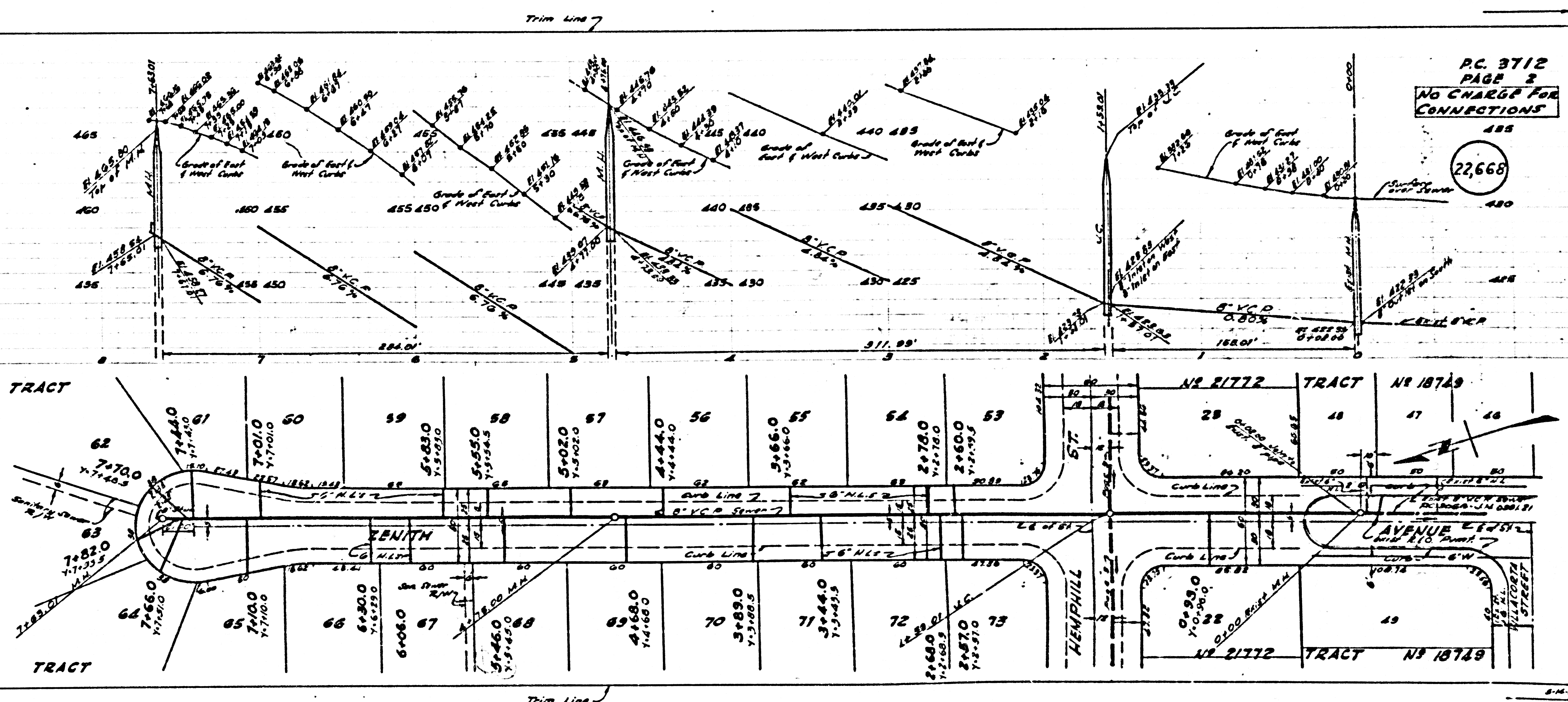
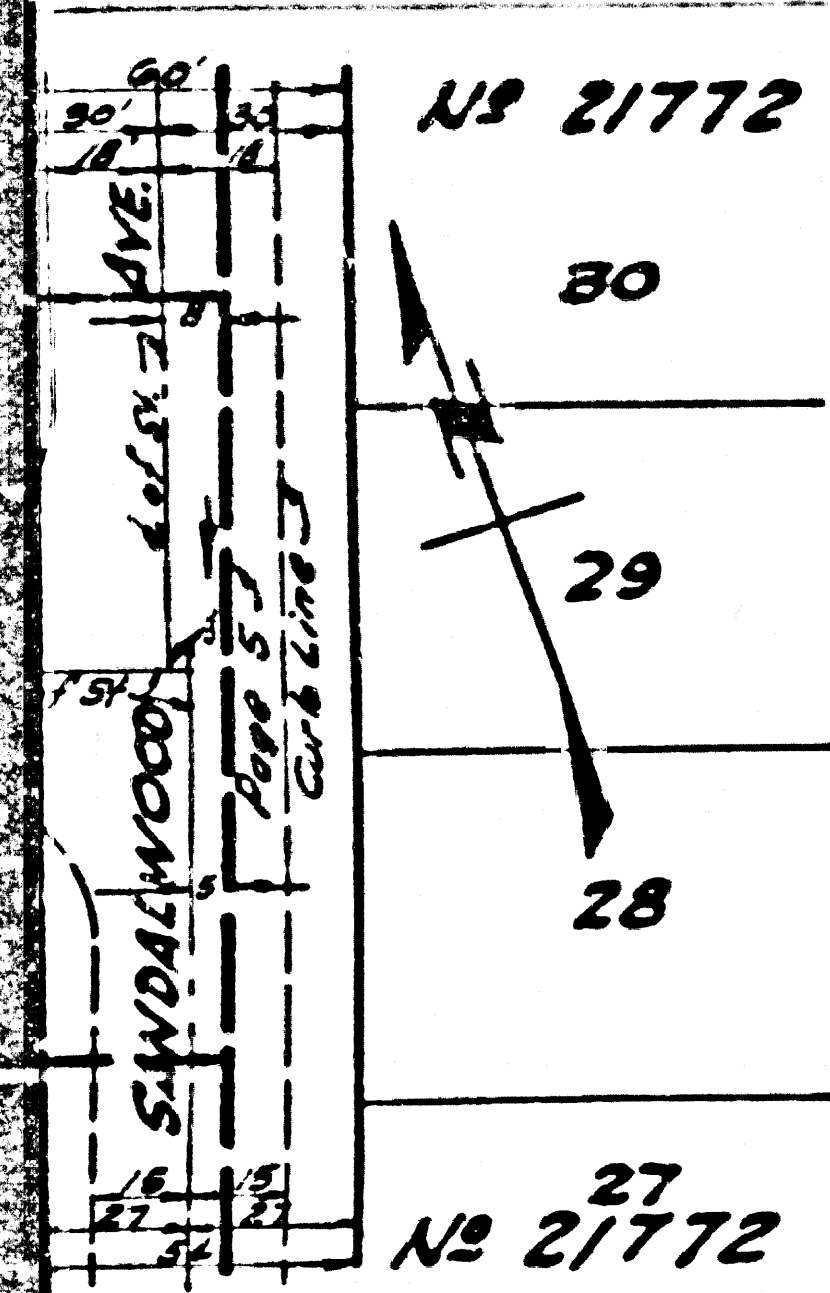
P.C. 3712
PAGE 2
NO CHARGE FOR
CONNECTIONS

22,668

435

430

425



Trim Line 7

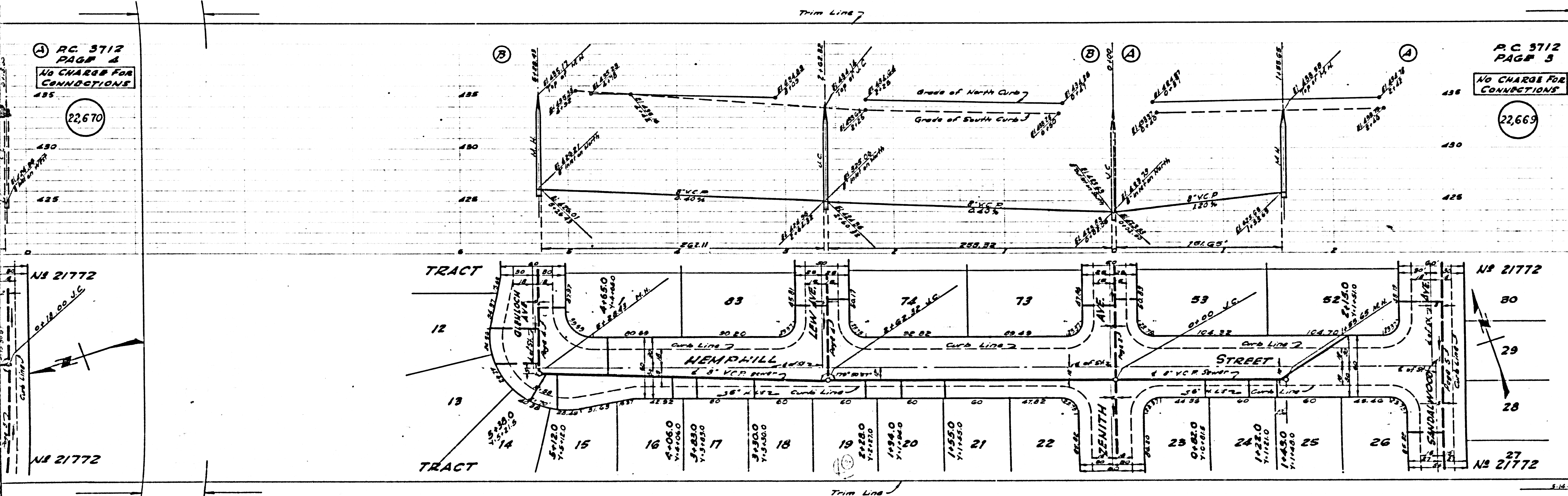
Trim Line 7

A) P.C. 3712
PAGE 4
NO CHARGE FOR
CONNECTIONS

22,670

P.C. 3712
PAGE 5
NO CHARGE FOR
CONNECTIONS

22,669



NS 21772

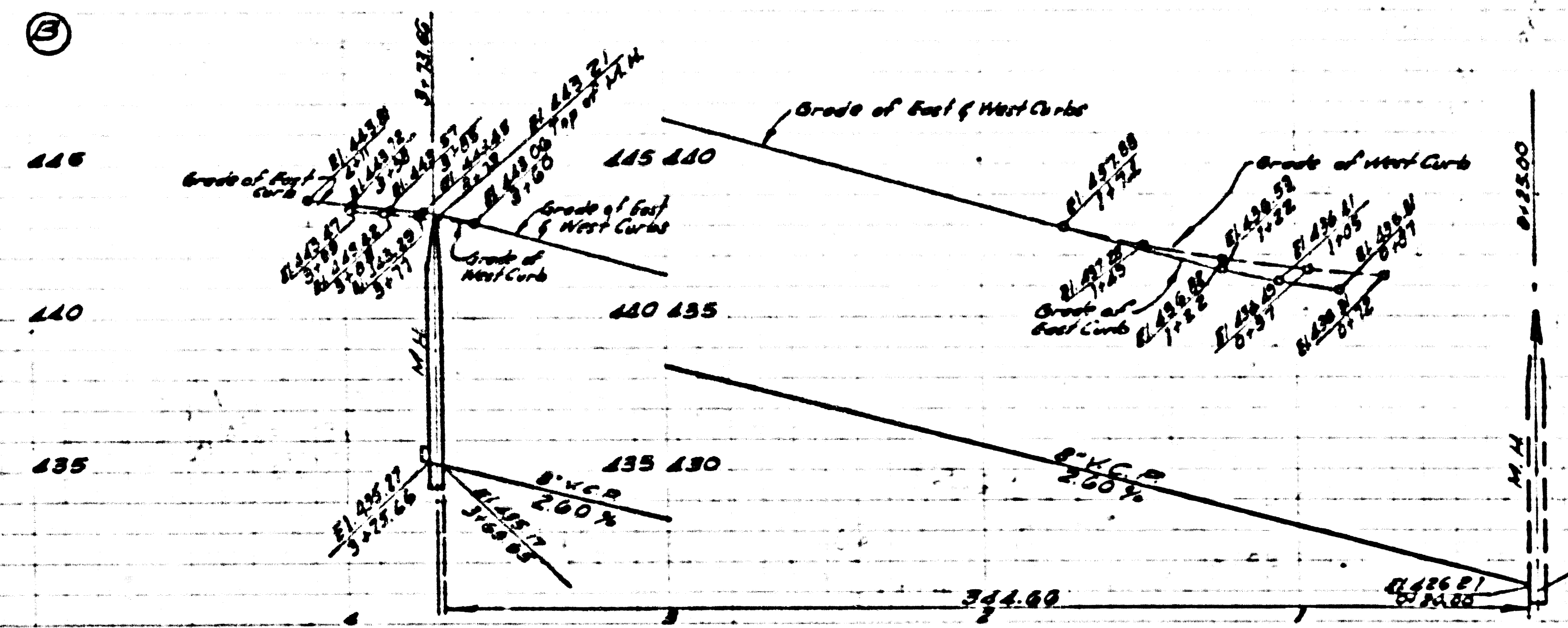
NS 21772

NS 21772

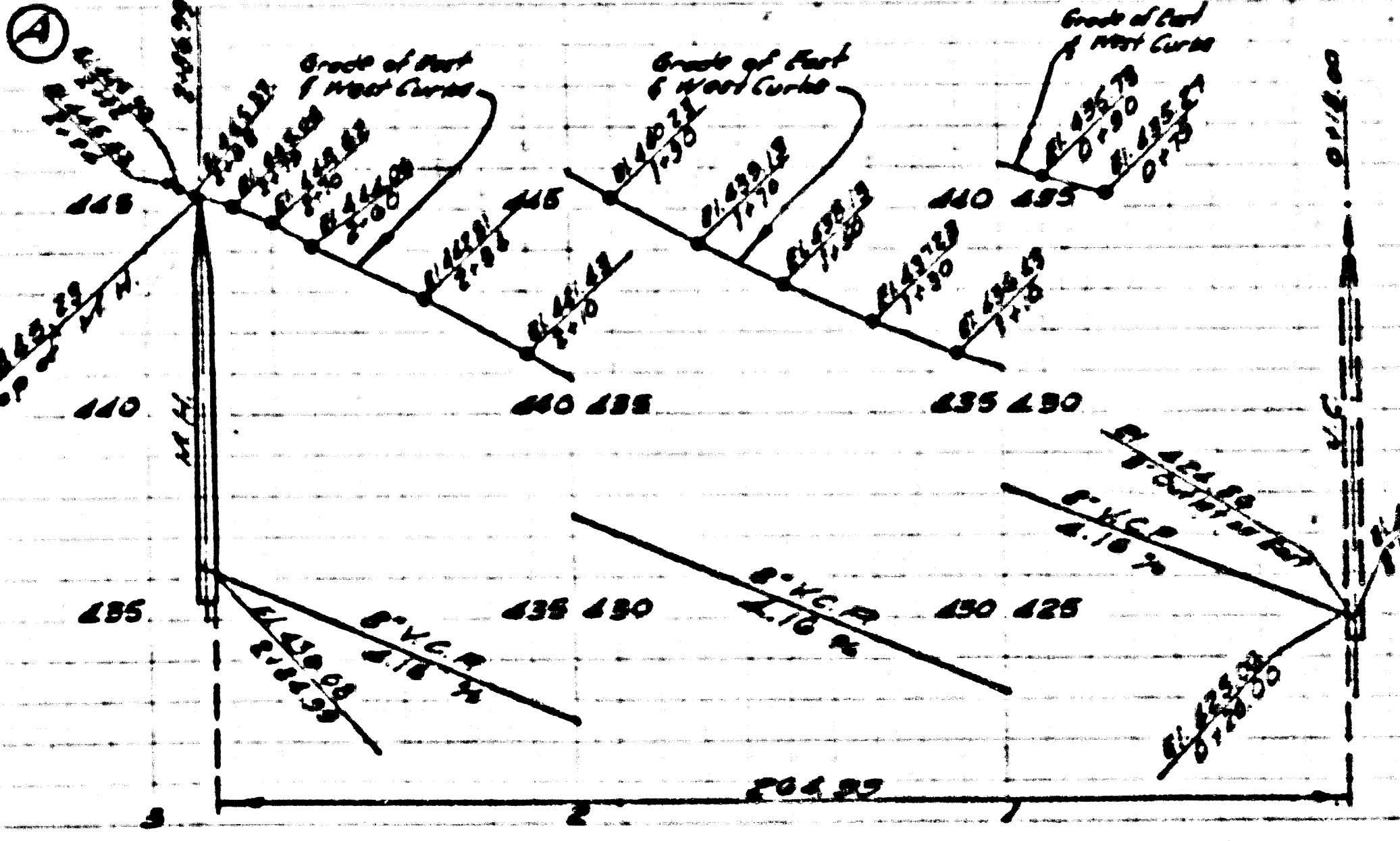
NS 21772

P.C. 3712
PAGE 5
NO CHARGE FOR
CONNECTIONS

22,671

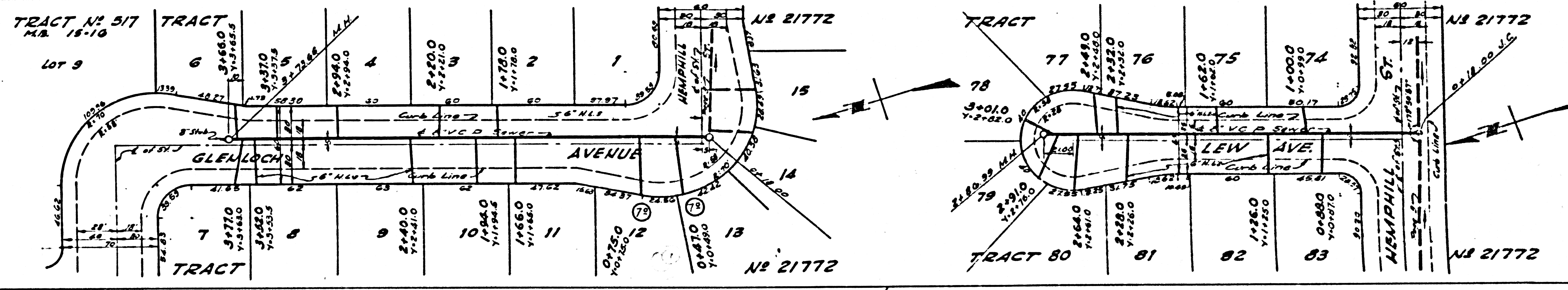


22,670



P.C. 3712
PAGE 4
NO CHARGE FOR
CONNECTIONS

22,670



P.C. 5712
PAGE 5
NO CHARGE FOR
CONNECTIONS

22,671

