

PC. 3713
PAGE 2

175

NO CHARGE FOR CONNECTIONS

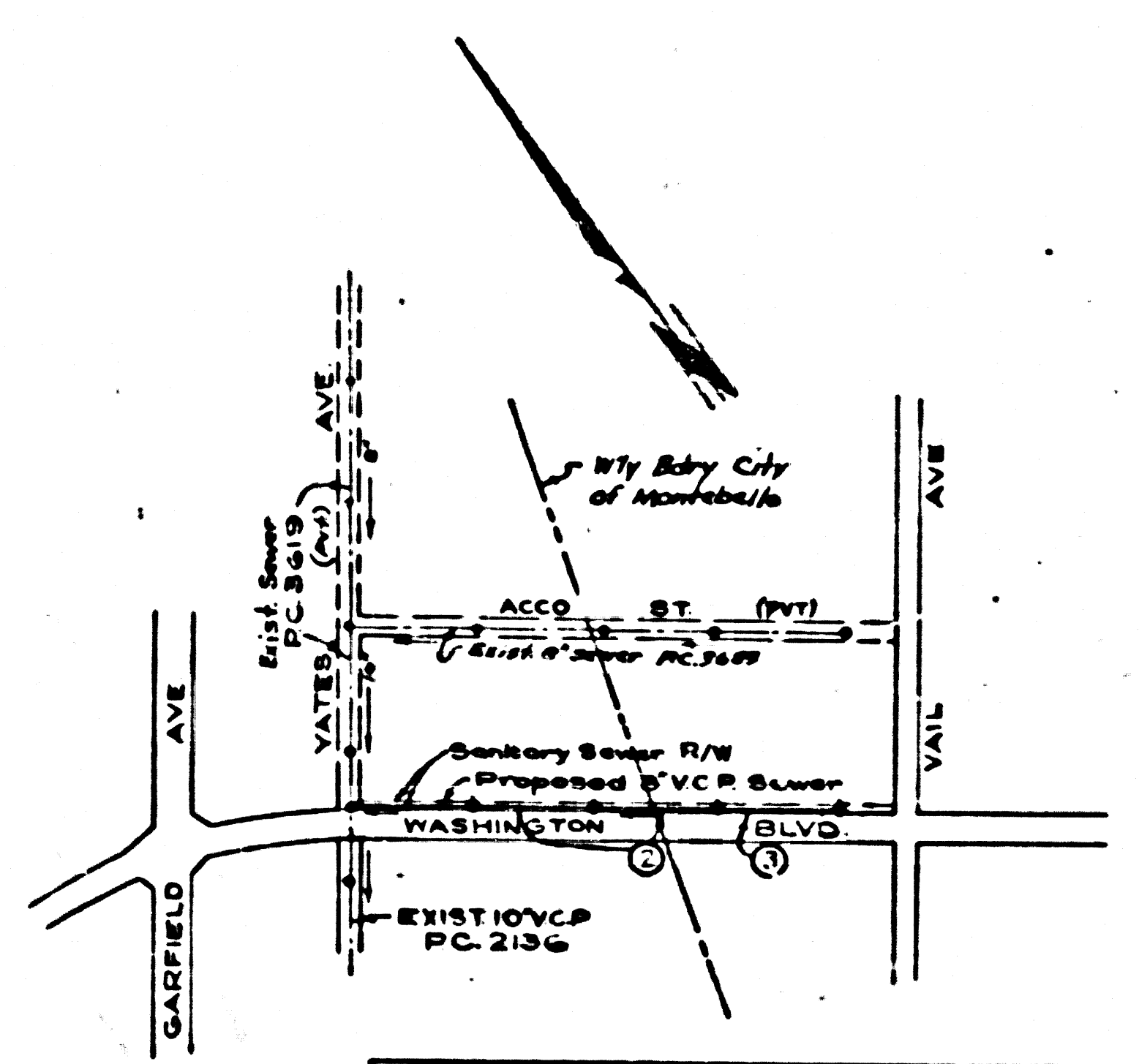
170

23,151

165

CITY OF MONTEBELLO

See Page 2



BM N#2A (LQ 508, PG 'A')
 Monument 33.95' to right of Sta.
 26+56.90 (2' Deep on Washington
 Blvd North of Telegraph Rd.)
 L&S Edge El. 160.815

INDEX MAP
 SCALE 1"=300'
 PC. 3713

EAST LOS ANGELES BLDG. DIST. NO. 6

- NOTE:**
- Provide stakes on the property lines or property lines produced at right angles to the sewer line at the center line of each manhole.
- No representative of the County Engineer will survey or layout any portion of the work.
- The owner or his authorized representative shall furnish the County Engineer with grade sheets and stations for all house laterals and Y branches and shall provide stakes for them at their proper locations with stationing plainly marked. Any change in location shall be requested in writing by the owner or his representative.
- No revisions shall be made in these plans without the approval of the County Engineer.
1. Use standard manhole frames and covers, S-a-117.
 2. Use standard strength pipe except as noted.
 3. Use cement mortar for all vitrified clay pipe joints.
 4. Resurface all trench within paved area to meet L.A. County Road Dept. or California State Highway Dept. requirements in accordance with permit.
 5. Excise four feet of sewer at points of interference with poles, S-a-119.
 6. House laterals to be constructed with invert at property line _____ feet below curb grade except as noted.
 7. All structures shall be brick sewer structures, S-a-104.
 8. For allowable leakage test, use Formula No. 1, Spec's., Sec. 51.
 9. Manhole tops in unimproved Right-of-Way to be 6" above finish grade.

Utilities:
 It shall be the responsibility of the contractor to locate all utilities of every nature, whether shown hereon or not, and protect them from damage. The contractor shall bear the total expense of repair or replacement of said utilities damaged by operations in connection with the prosecution of the work.

SHEET	PAGE
1	1-3

NO CHARGE FOR CONNECTIONS
 27,275, 27,275, 27,275

CITY OF MONTEBELLO
 APPROVED _____ DATE _____
 City Engineer, City of Montebello, C.E. 780

Checked 7-27-50 M. Green

PROFILE, ALIGNMENT AND GRADE OF
SANITARY SEWERS
 TO BE CONSTRUCTED IN
7' SANITARY SEWER R/W
NORTH OF WASHINGTON BLVD.

PC. 3713
 PAGE 1

23,150

(3)

PRIVATE CONTRACT NO. 3713
 W. S. 36
 ONE SHEET
 Scale: VERT. 1"=4' DEPT, 1955
 PREPARED BY THE OFFICES OF

Arthur J. Co. Inc.
 Reg. C. E. No. 7709

FOR LEGEND SEE PLAN NO. S-a-64

NOTE:

Grades to which this improvement is to be constructed are shown on plans and profiles. Grade points for top of curbs, center line of streets, or corner line of alleys are shown by circles on profiles. At all points between designated points the grade shall be established so as to conform to a straight line drawn between said designated points.

Elevations are in feet above U.S.C. & G.S. See Level Datum of 1929.

This drawing and the data hereon are hereby made a part of the specifications.

Work shall be constructed according to specifications on file in the office of the County Engineer and shall be prosecuted only in the presence of the County Engineer.

Before work can be started, the Contractor must obtain a permit to excavate in County streets from the L.A. County Road Dept. 100 B2nd St. and make a deposit with the County Engineer, Room 118 Post American Bldg., 255 S. Broadway, sufficient to cover the cost of construction inspection and record plans.

Approval of this plan by the County of Los Angeles does not constitute a representation as to the accuracy of the location of or the existence or non-existence of any underground utility, pipe, or structure within the limits of this project. This note applies to all sheets.

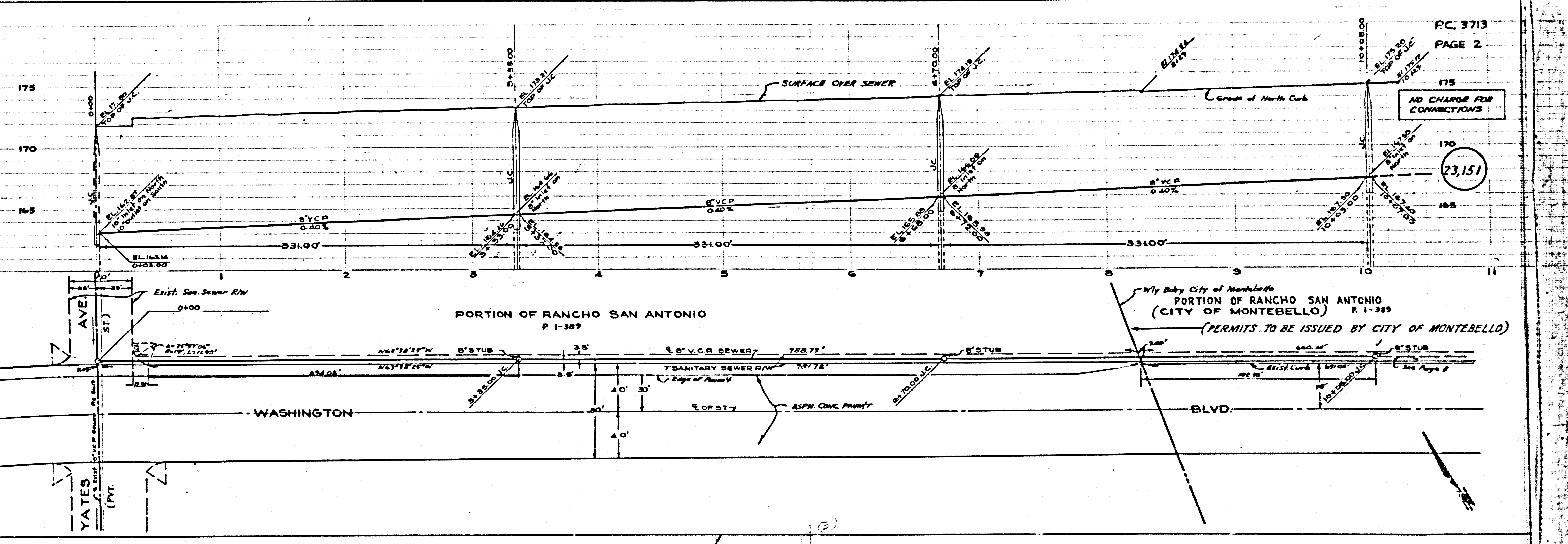
If work is to be done in a State Highway, a permit must be obtained from the State of California, Division of Highways, 120 South Spring Street.

COUNTY OF LOS ANGELES, CALIFORNIA
 Approved, John A. Lambie, County Engineer Approved, A. M. Row
A. P. Collins Chief Engr. COUNTY DIST. NO. 6
A. M. Row City Engineer
 Checked by *R. E. ...* 1-31-50
 Office of County Engineer, Reg. C. E. No. 7860

PC. 3713

R/W N. OF WASHINGTON BLVD.

PC. 3713



PC. 3713
PAGE 2

NO CHARGE FOR CONNECTIONS

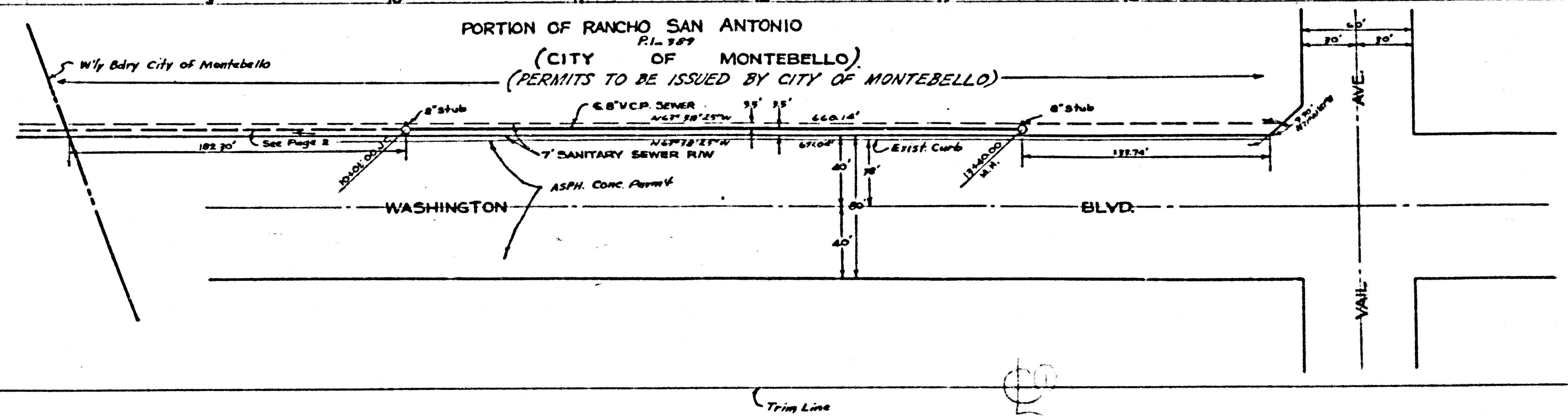
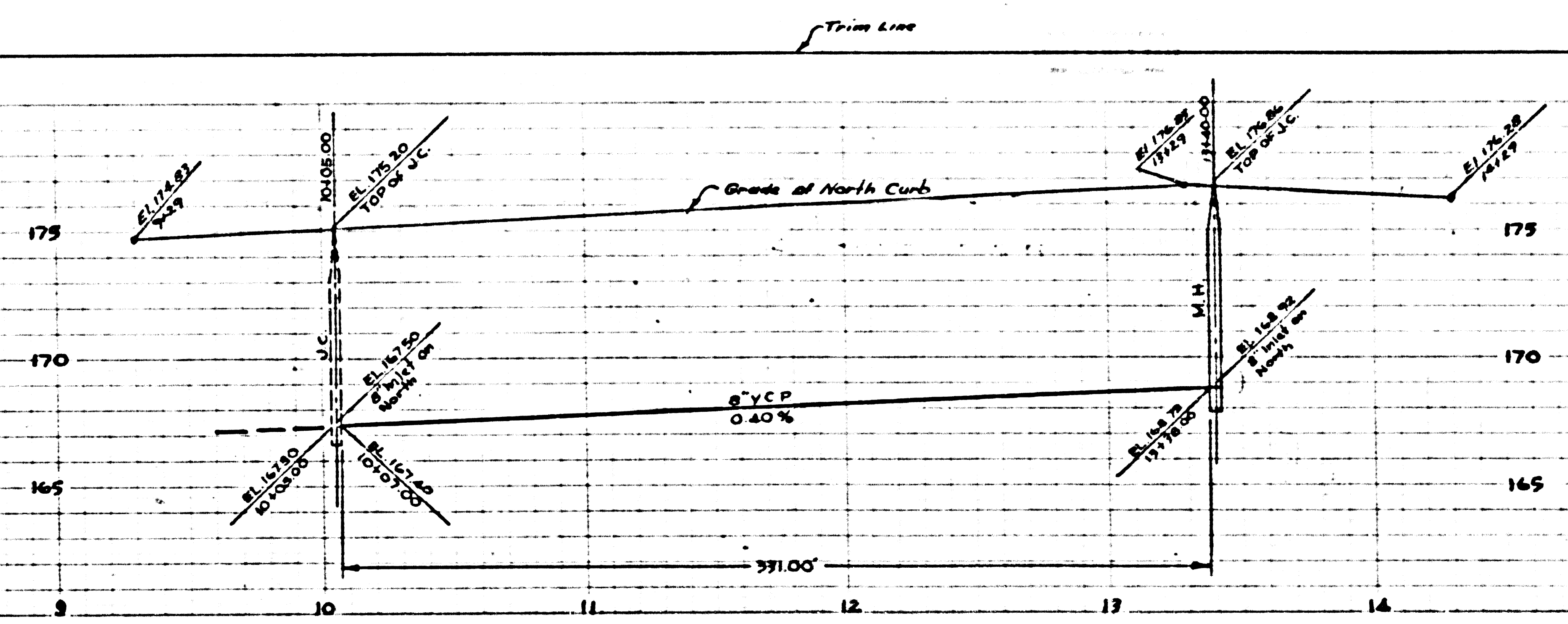
23,151

City of Montebello
 PORTION OF RANCHO SAN ANTONIO
 (CITY OF MONTEBELLO) P. 1-389
 (PERMITS TO BE ISSUED BY CITY OF MONTEBELLO)

GARFIELD AVE

NO CHARGE FOR CONNECTIONS

23,152



YATES
(PVT.)