

B.M. 51135 El. 192.138 C.S. man at int. of Imperial Hwy & Lumber Ave. Adj. El. 191.538 (County surveyors datum)
 Note: To place L¹ on this plan an ST datum add 840 to all L¹ stumps.

NORWALK BLDG. DIST. N^o 4.2

- NOTE:**
 Provide stakes on the property lines or property lines produced at right angles to the sewer line at the center line of each manhole.
 No representative of the County Engineer will survey or layout any portion of the work.
 The owner or his authorized representative shall furnish the County Engineer with grade sheets and stations for all house laterals and Y line, dyes and shall provide stakes for them at their proper locations with stationing plainly marked. Any change in location shall be requested in writing by the owner or his representative.
 No revisions shall be made in these plans without the approval of the County Engineer.
1. Use standard manhole frames and covers, S-a-117.
 2. Use standard strength pipe except as noted.
 3. Use cement mortar for all vitrified clay pipe joints.
 4. Resurface all trench within paved area to meet L.A. County Road Dept or California State Highway Dept. requirements in accordance with permit.
 5. Excavate four feet of trench at points of interference with poles, S-a-119.
 6. House laterals to be constructed with inverts at property line _____ feet below curb grade except as noted.
 7. All structures shall be brick sewer structures, S-a-104.
 8. For allowable leakage test, use Formula No. _____, Sec. 51.
 9. Manhole tops in unimproved Right-of-Way to be 6" above finish grade.
- REVISION**
 Revised alignment on Pg 5 GO
 Sta. 4+13.50 to sta 4+14.11
 Approved: _____
 11-10-55

PROFILE, ALIGNMENT AND GRADE OF
SANITARY SEWERS
 TO BE CONSTRUCTED IN

TRACT N^o 21413

PRIVATE CONTRACT NO. 3720
 W. S. 3d
 SHEETS

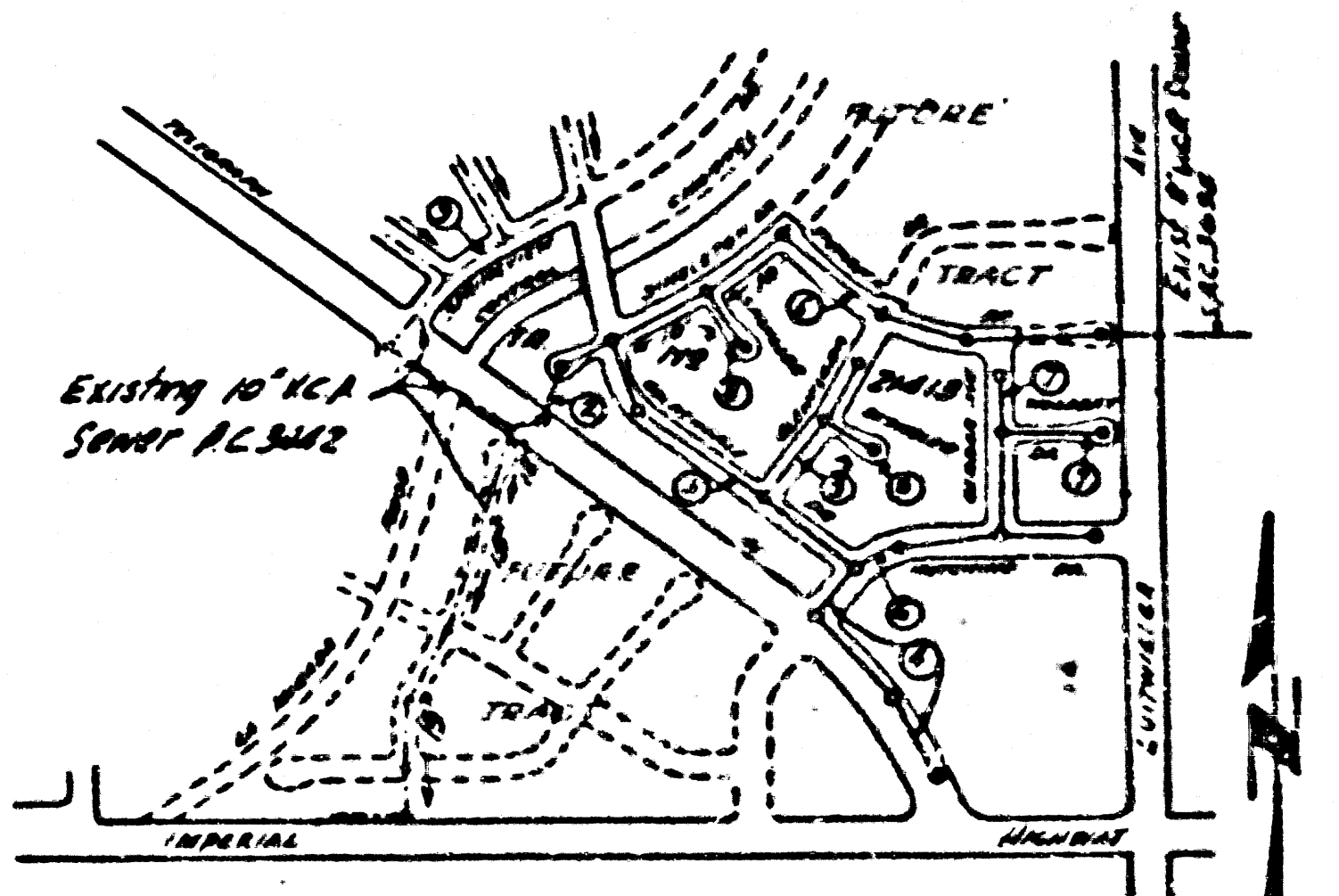
Scale: VERT. 1" = 4'
 HORIZ. 1" = 40'
 OCT. 1955

PREPARED IN THE OFFICES OF
WM. H. FAIR, JR.
 City Engineer
 No. 8583
 FOR LEGEND SEE PLAN NO. S-a-64

PC 3720
 Page 1
 DOUBLE SCALE

22,482

TRACT N^o 21413

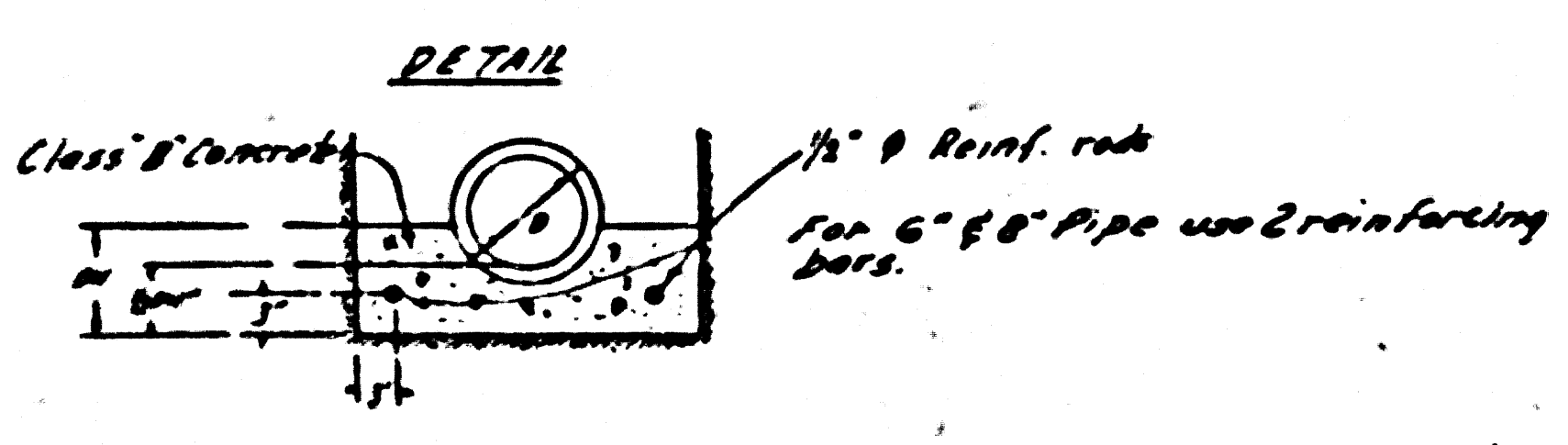


SHEET	DRAWN
1	1-8
2	5-9

INDEX MAP
 SCALE 1" = 800'
 TRACT N^o 21413
 PC. 3720

Checked 4-25-56 M. J. Green

NO CHARGE FOR CONNECTIONS
 L. Carlson - 11-10-55



SPECIAL CRADLE FOR SEWERS IN FILLED AREAS

REVISION
 Revised alignment on Pg 5 GO
 Sta. 4+13.50 to sta 4+14.11
 Approved: _____
 11-10-55

NOTE:
 Grades to which this improvement is to be constructed are shown on plans and profiles. Grade points for top of curbs, center line of streets, or corner line of alleys are shown by circles on profile. At all points between designated points the grade shall be established so as to conform to a straight line drawn between said designated points.
 Elevations are in feet above U.S.G.S. datum or mean sea level.
 This drawing and the data hereon are hereby made a part of the specifications.
 Work shall be constructed according to specifications on file in the office of the County Engineer and shall be prosecuted only in the presence of the County Engineer.
 Before work can be started, the contractor must obtain a permit to excavate in County streets from the L.A. County Road Dept., 108 W. 2nd St. and make a deposit with the County Engineer, Room 510, 233 South Broadway, sufficient to cover the cost of construction inspection and record plans.
 Approval of this plan by the County of Los Angeles does not constitute a representation as to the accuracy of the location of or the existence or non-existence of any underground utility, pipe, or structure within the limits of this project. This note applies to all sheets.
 If work is to be done on a State Highway, a permit must be obtained from the State of California, Division of Highways, 120 South Spring Street.

COUNTY OF LOS ANGELES, CALIFORNIA
 Approved, John A. Lando, County Engineer
 Approved, A. M. Ryan
 CIVIL ENGR. TO SAN. DIST. NO. 10
 City Engineer
 11-10-55
 Office of County Engineer, Dep. C. E. No. 7860

W. H. FAIR, JR.

RL

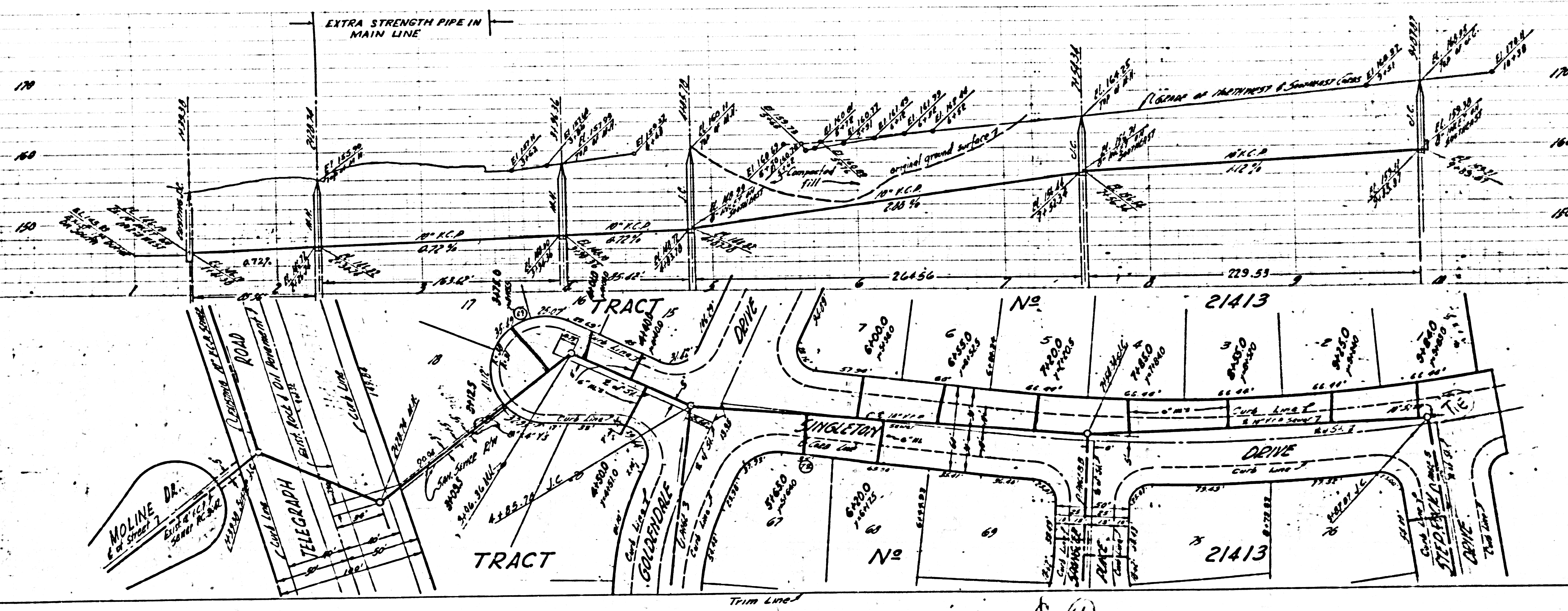
Trim Line 2

EXTRA STRENGTH PIPE IN MAIN LINE

RC 3720
Page 2
DOUBLE SCALE

NO CHARGE FOR CONNECTIONS

22,483



Trim Line 1

(14)

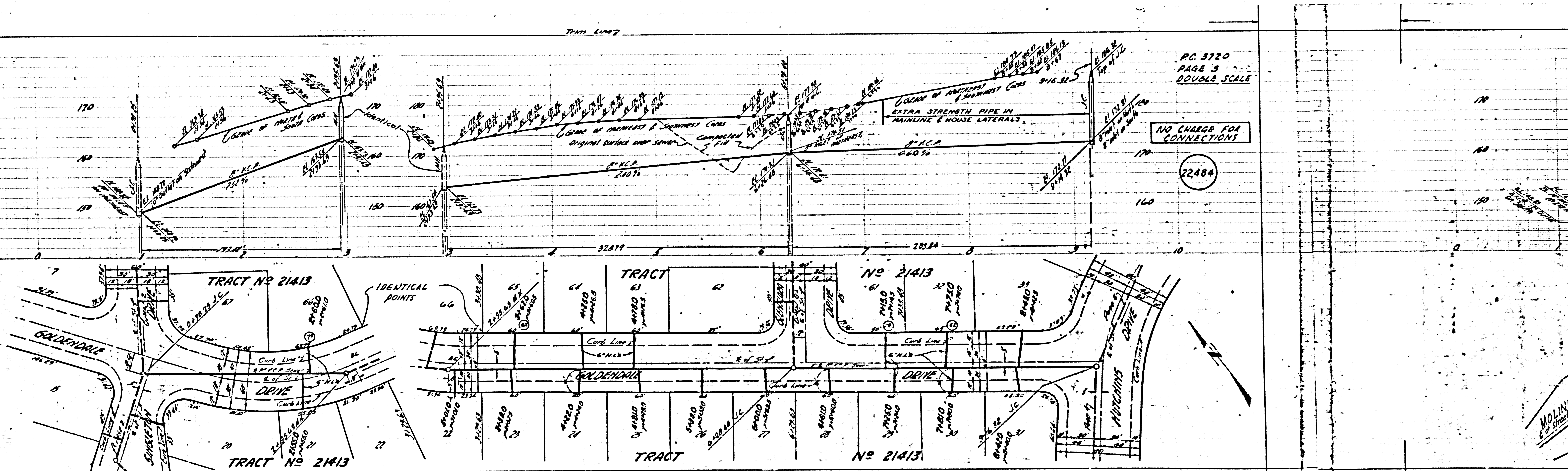
checked

Trim Line

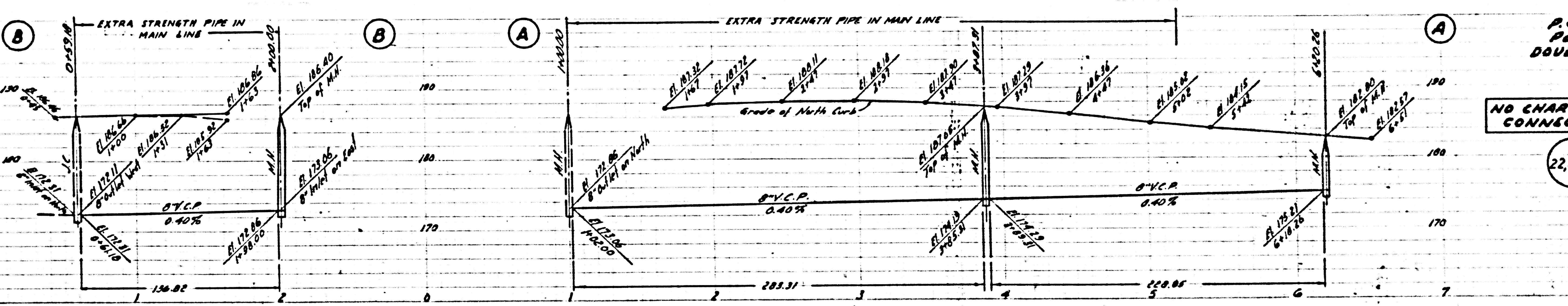
P.C. 3720
PAGE 3
DOUBLE SCALE

NO CHARGE FOR CONNECTIONS

22484



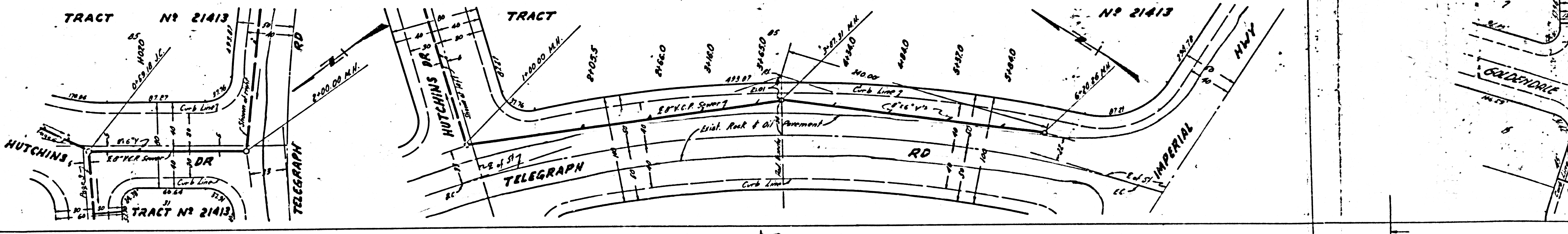
MOLINE DA
E. of Street
Sewer



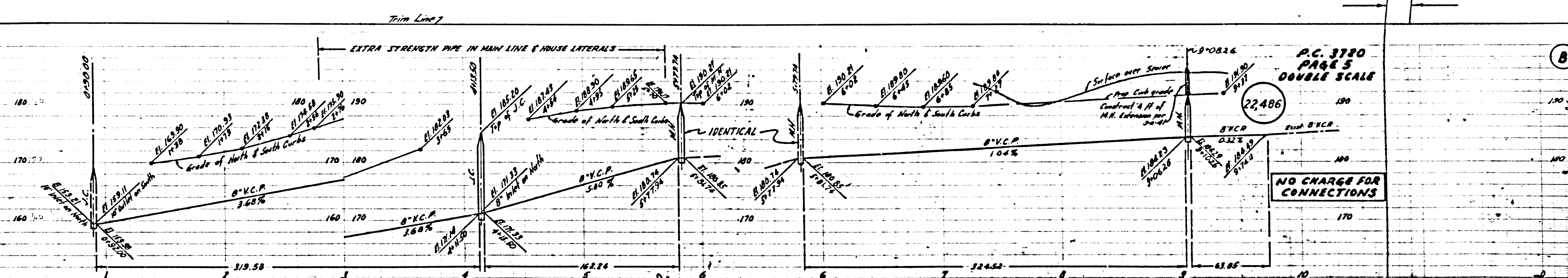
P.C. 3720
 Prop 4
 DOUBLE SCALE

NO CHARGE FOR CONNECTIONS

22,485

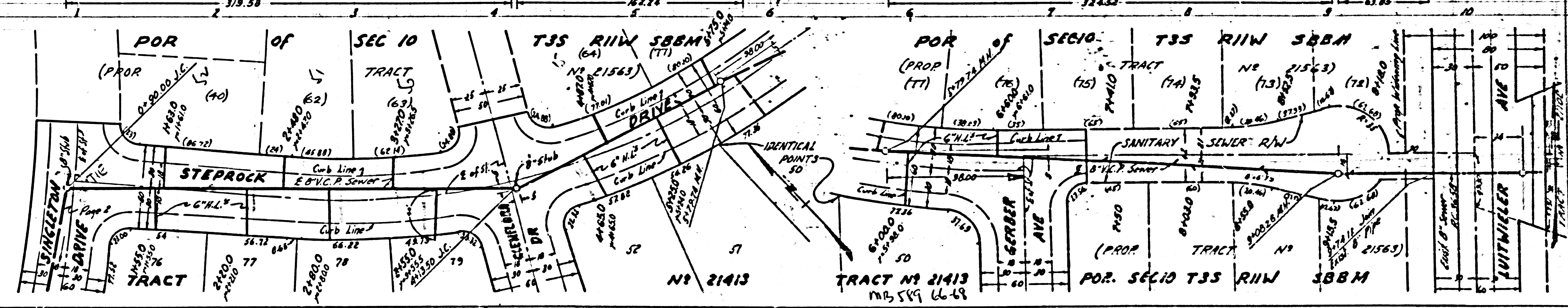


NO CHARGE FOR CONNECTIONS



3770

0556 29



TRACT NO 21413

TRACT NO 21413
MB 549 66-68

POR. SEC 10 T35 RIW SBBM

①

Locks No. 19

P.C. 3720
Page 6
DOUBLE SCALE

NO CHARGE FOR CONNECTIONS

22,487

TRACT No 21413

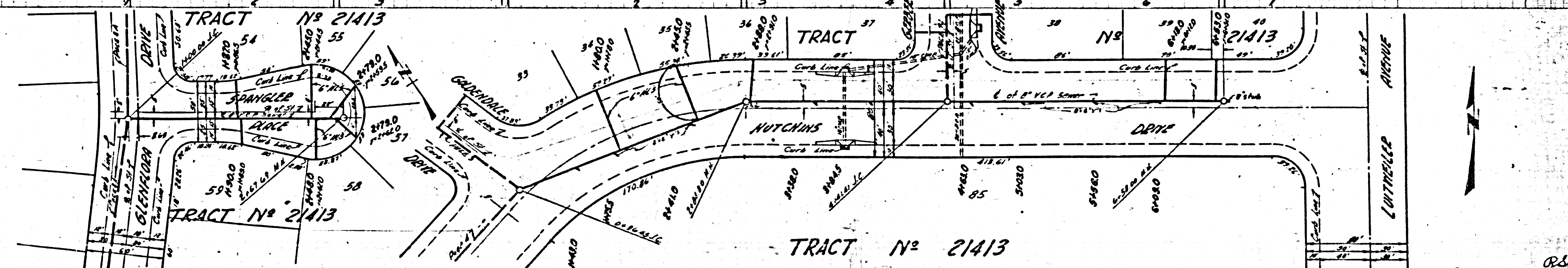
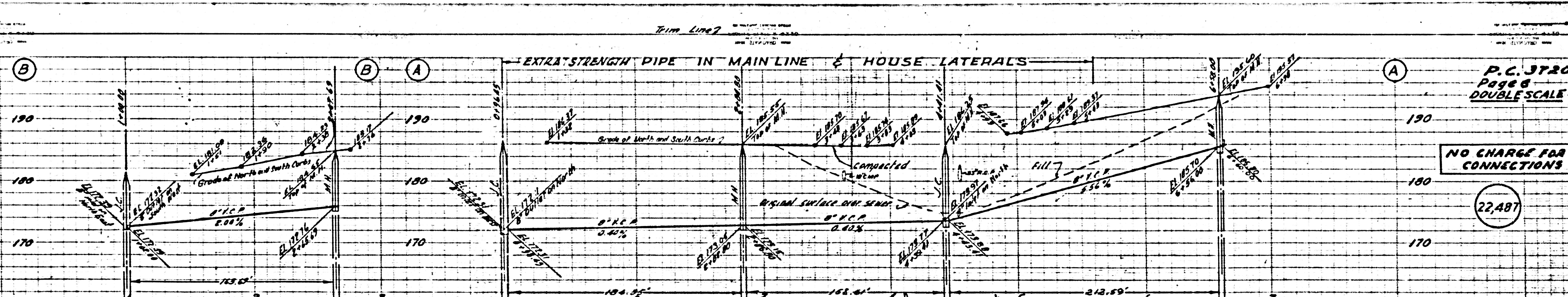
512-0

P.C. 3150

RS

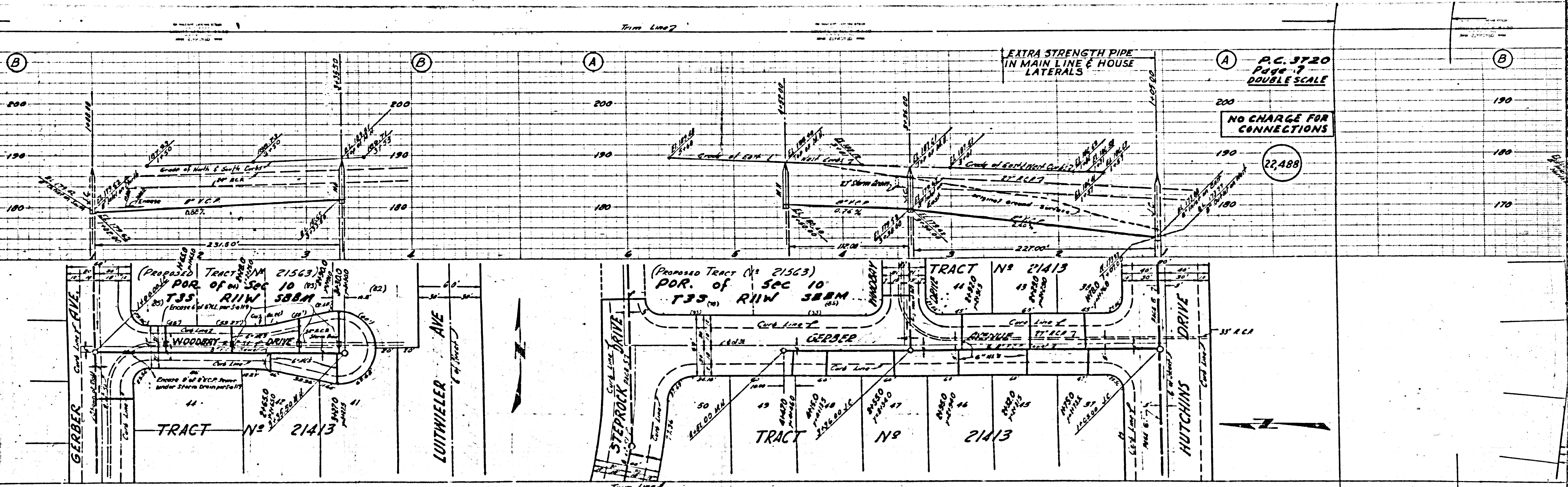
2

EXTRA STRENGTH PIPE IN MAIN LINE & HOUSE LATERALS



TRACT No 21413

C1



EXTRA STRENGTH PIPE
IN MAIN LINE & HOUSE
LATERALS

P.C. 3720
Page 7
DOUBLE SCALE

NO CHARGE FOR
CONNECTIONS

22,488

(Proposed Tract No 21563)
POR. of Sec 10
T3S R11W S88M

(Proposed Tract No 21563)
POR. of Sec 10
T3S R11W S88M

TRACT No 21413

TRACT No 21413

GERBER
CITY LIMIT AVE.

LUITWIELER
AVE

STEPROCK
DRIVE

WOODBURY
DRIVE

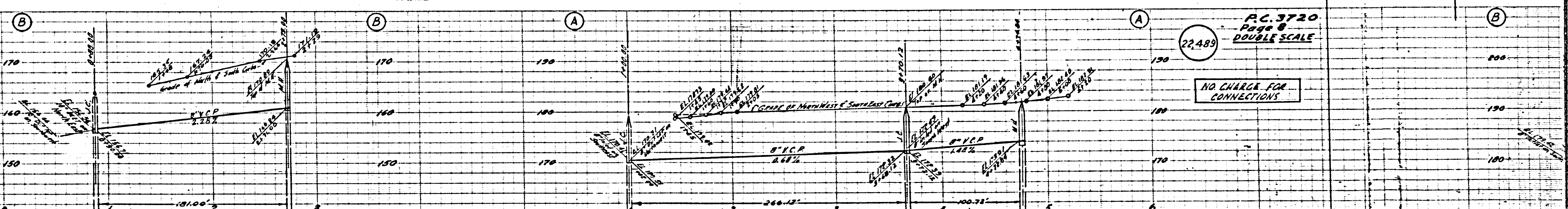
HUTCHINS
DRIVE

TRACT No 21413

TRACT No 21413

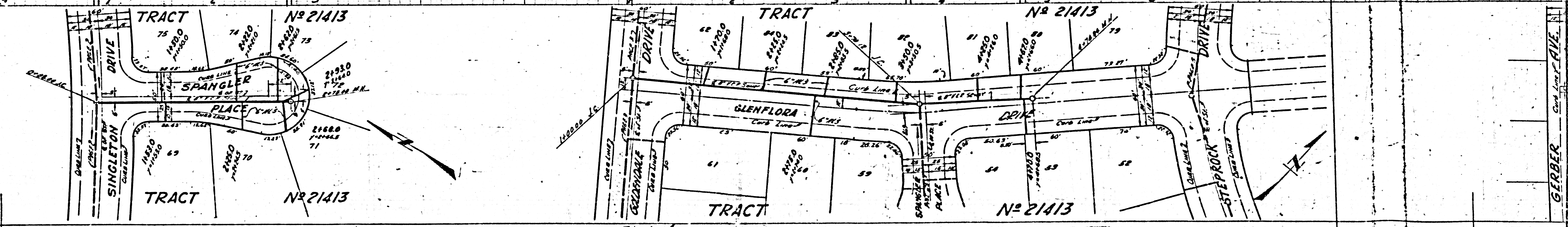
22

Trim Line



PC. 3720
Page 6
DOUBLE SCALE
22,489

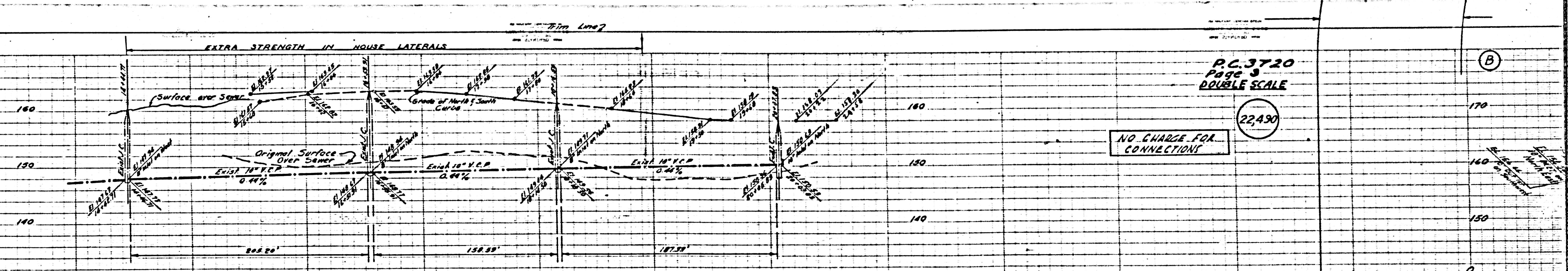
NO CHARGE FOR CONNECTIONS



GERBER - CIVIL ENGINEER

43

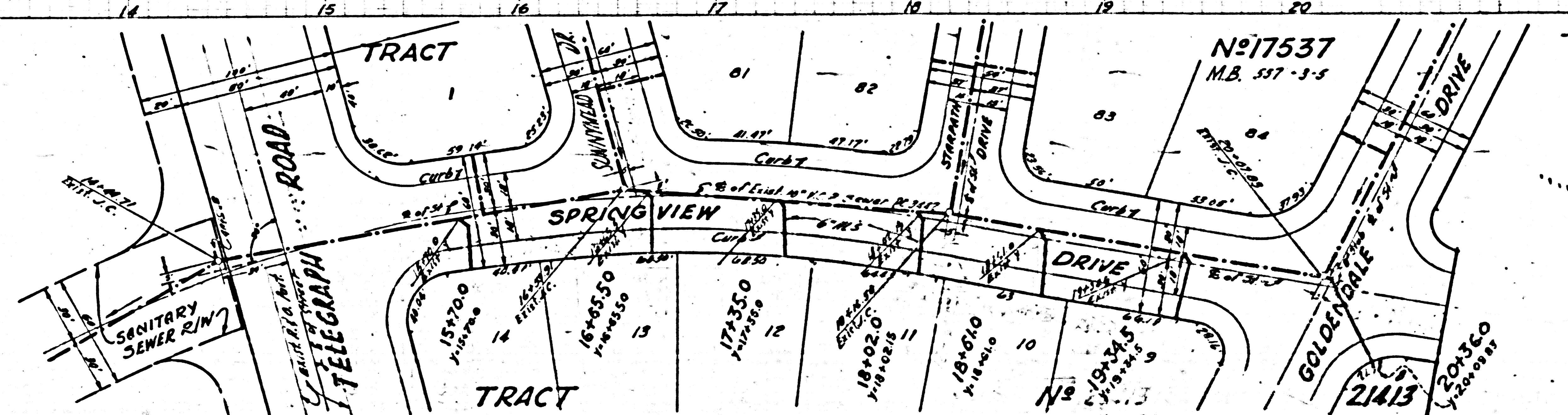
TRACT 2143



P.C. 3720
Page 3
DOUBLE SCALE

NO CHARGE FOR CONNECTIONS

22,490



P.C. 3720

20