

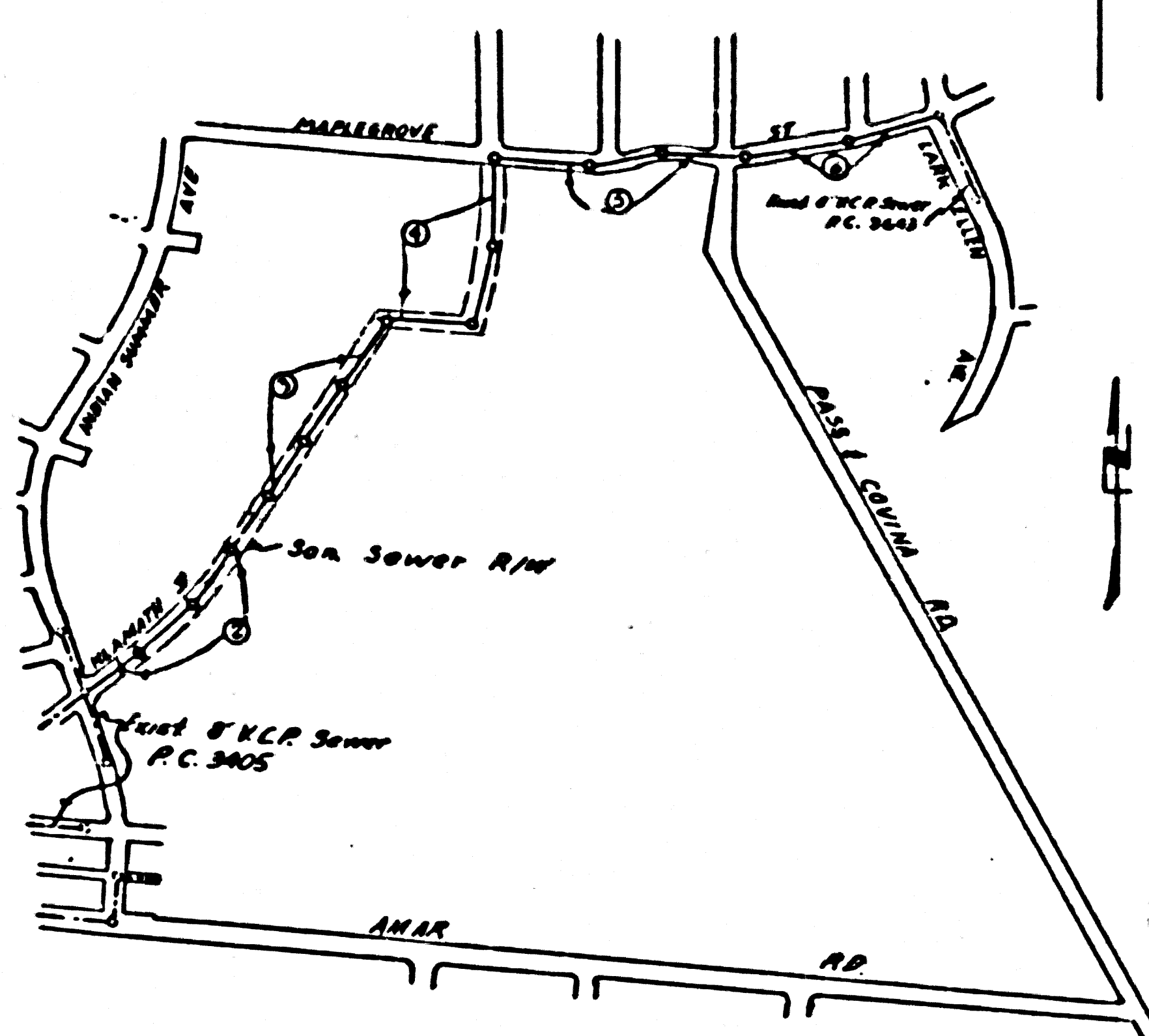
PC 3721
Page 2

COLLECT CHARGES
AS INDICATED

22,256

18393
M.B. 509 15-34

3816
316
SUMMER LANE



INDEX MAP
TRACT # 22296
PC 3721
Scale 1" = 600'

BM: 3.6.1814 EL. 327.027
Set & B. Nail 3' curb of driveway to house at
876 Stedora Ave 175.5' E 150' E of intersection
Elliot Ave & Stedora Ave 4.30' E of Bay of curb

PUEENTE BLDG. DIST. NO 2

- NOTE:**
- Provide station on the property lines or property lines produced at right angles to the sewer line at the center line of each manhole.
 - No representative of the County Engineer will survey or layout any portion of the work.
 - The owner or his authorized representative shall furnish the County Engineer with grade sheets and stations for all house laterals and Y branches and shall provide station for them at their proper locations with stationing plainly marked. Any change in location shall be requested in writing by the owner or his representative.
 - No revisions shall be made on these plans without the approval of the County Engineer.
 - Use standard manhole frames and covers, S-a-117.
 - Use standard strength pipe except as noted.
 - Use cement mortar for all vitrified clay pipe joints.
 - Resurface all trench within paved area to meet L.A. County Road Dept. or California State Highway Dept. requirements in accordance with permit.
 - Excise four feet of sewer at points of interference with poles, S-a-119.
 - Manholes to be constructed with inverts at property line _____ feet below curb grade _____ as noted.
 - All structures shall be brick sewer structures, S-a-104.
 - For allowable leakage test, use Formula No. _____, Spec's., Sec. 51.
 - Manhole tops in unimproved Right-Of-Way to be 6" above finish grade.

COLLECT CHARGES
AS INDICATED
Customer 12-22-55

SHEET	PAGES
1	1-8
2	5-6

PAGES 2 & 3 ONLY
INTERFERING STREETS CHANGED
REVISION APPROVED:

By: R. P. Collins L.H. 56
Office of County Eng. Roy G. E. N. 2840
NOT TO EXCEED THE REIMB. CONTRACT

Revised 3-5-56
Trim Line 2

PROFILE, ALIGNMENT AND GRADE OF
SANITARY SEWERS
TO BE CONSTRUCTED IN
TRACT NO 22296

PC 3721
Page 1

22,256

PRIVATE CONTRACT NO. 3721
W. S. 38

2 SHEETS
Scale: VERT. 1" = 4'
HORIZ. 1" = 40'
NOVEMBER 1955
PREPARED BY THE OFFICE OF
Harold I. Johnson

FOR LEGEND SEE PLAN NO. S-a-64

NOTE:

Grades to which this improvement is to be constructed are shown on plans and profiles. Grade points for top of curb, center line of streets, or center line of alleys are shown by circles on profiles. At all points between designated points the grade shall be established so as to conform to a straight line drawn between said designated points.

Elevations are in feet above U.S.C. & G.S. See level datum of 1929.

This drawing and the data hereon are hereby made a part of the specifications.

Work shall be constructed according to specifications on file in the office of the County Engineer and shall be prosecuted only in the presence of the County Engineer.

Before work can be started, the contractor must obtain a permit to excavate in County streets from the L.A. County Road Dept., 108 W. 2nd St. and make a deposit with the County Engineer, Room 324, 253 South Broadway, sufficient to cover the cost of construction inspection and record plans.

Approval of this plan by the County of Los Angeles does not constitute a representation as to the accuracy of the location of or the existence or non-existence of any underground utility, pipe, or structure within the limits of this project. This note applies to all sheets.

If work is to be done in a State Highway, a permit must be obtained from the State of California, Division of Highways, 120 South Spring Street.

COUNTY OF LOS ANGELES, CALIFORNIA

Approved, John A. Lambie, County Engineer
Approved, A. M. Rosen

By: A. P. Collins L.H. 56
City Engineer

Checked by: R. P. Collins L.H. 56
12-22-55
Office of County Engineer, Roy G. E. N. 2840

1

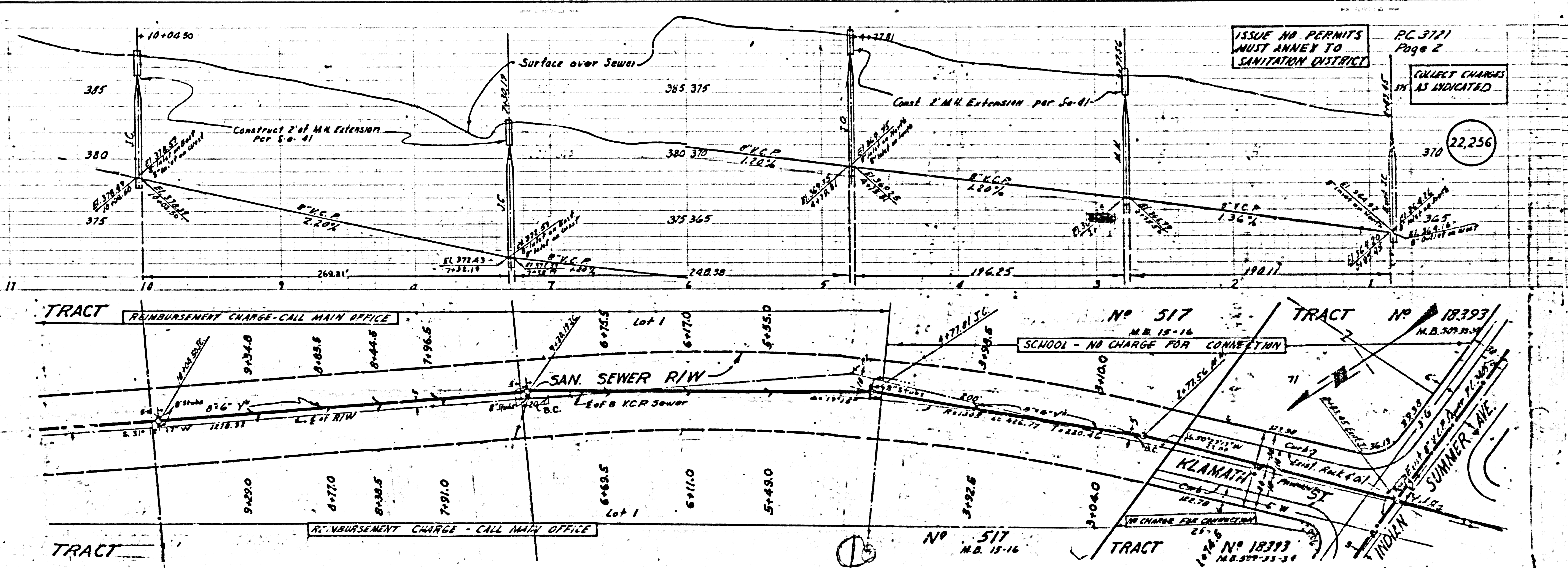
TRACT NO 22296

PC 3721

PC 3721
Page 3

REIMBURSEMENT
CALL OFFICE

22,257



ISSUE NO PERMITS
MUST ANNEX TO
SANITATION DISTRICT

PC 3721
Page 2

COLLECT CHARGES
AS INDICATED

22,256

TRACT REIMBURSEMENT CHARGE - CALL MAIN OFFICE

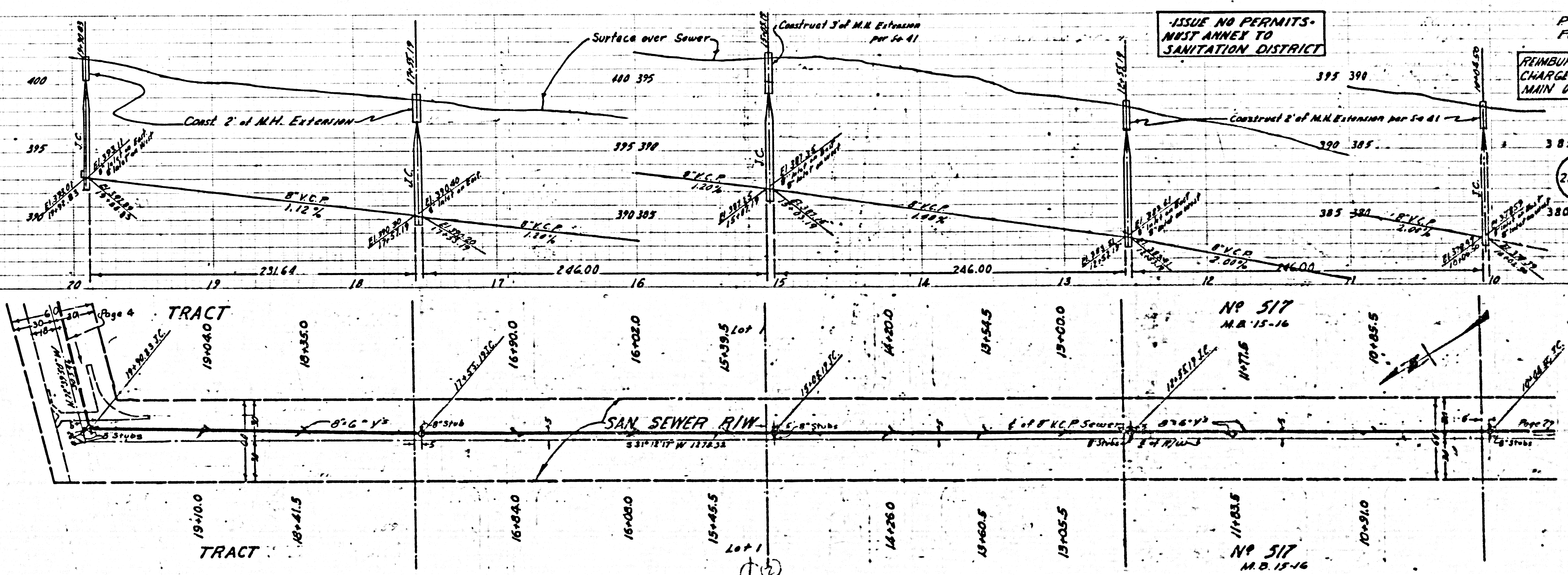
No 517
M.B. 15-16
SCHOOL - NO CHARGE FOR CONNECTION

TRACT No 18393
M.B. 309-33-34

TRACT REIMBURSEMENT CHARGE - CALL MAIN OFFICE

No 517
M.B. 15-16

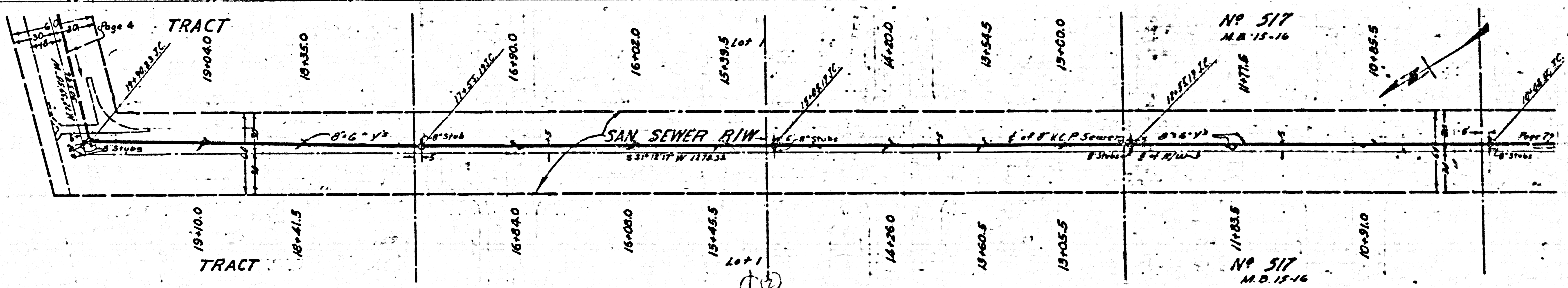
TRACT No 18393
M.B. 309-33-34



ISSUE NO PERMITS - MUST ANNEX TO SANITATION DISTRICT

PC 3721 Page 3
 REIMBURSEMENT CHARGE - CALL MAIN OFFICE

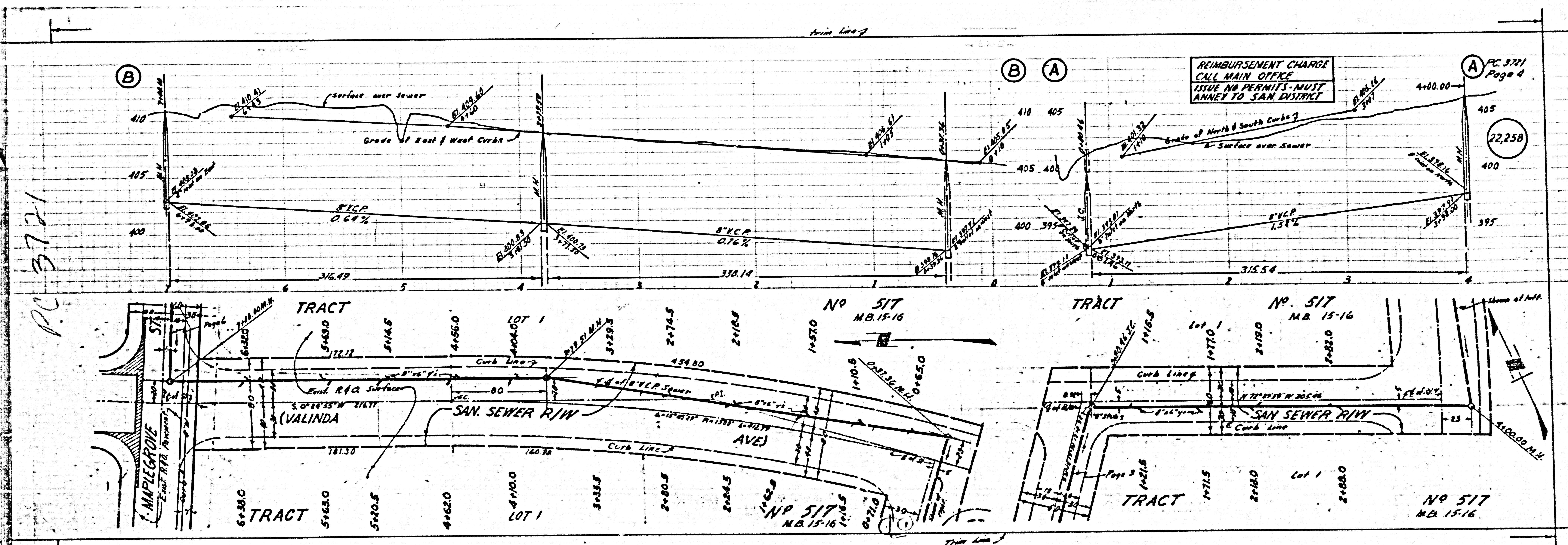
22,257



SAN SEWER R/W

NO 517 M.B. 15-16

NO 517 M.B. 15-16



PC 3721
Page 6

REIMBURSEMENT
CHARGE CALL
MAIN OFFICE

ISSUE NO PERMITS
MUST ANNEX TO
SANITATION DISTRICT

22,260

NO 13875
M.R. 284-41-42

TRACT NO 13875
M.R. 284-41-42

PC 3721
Page 5

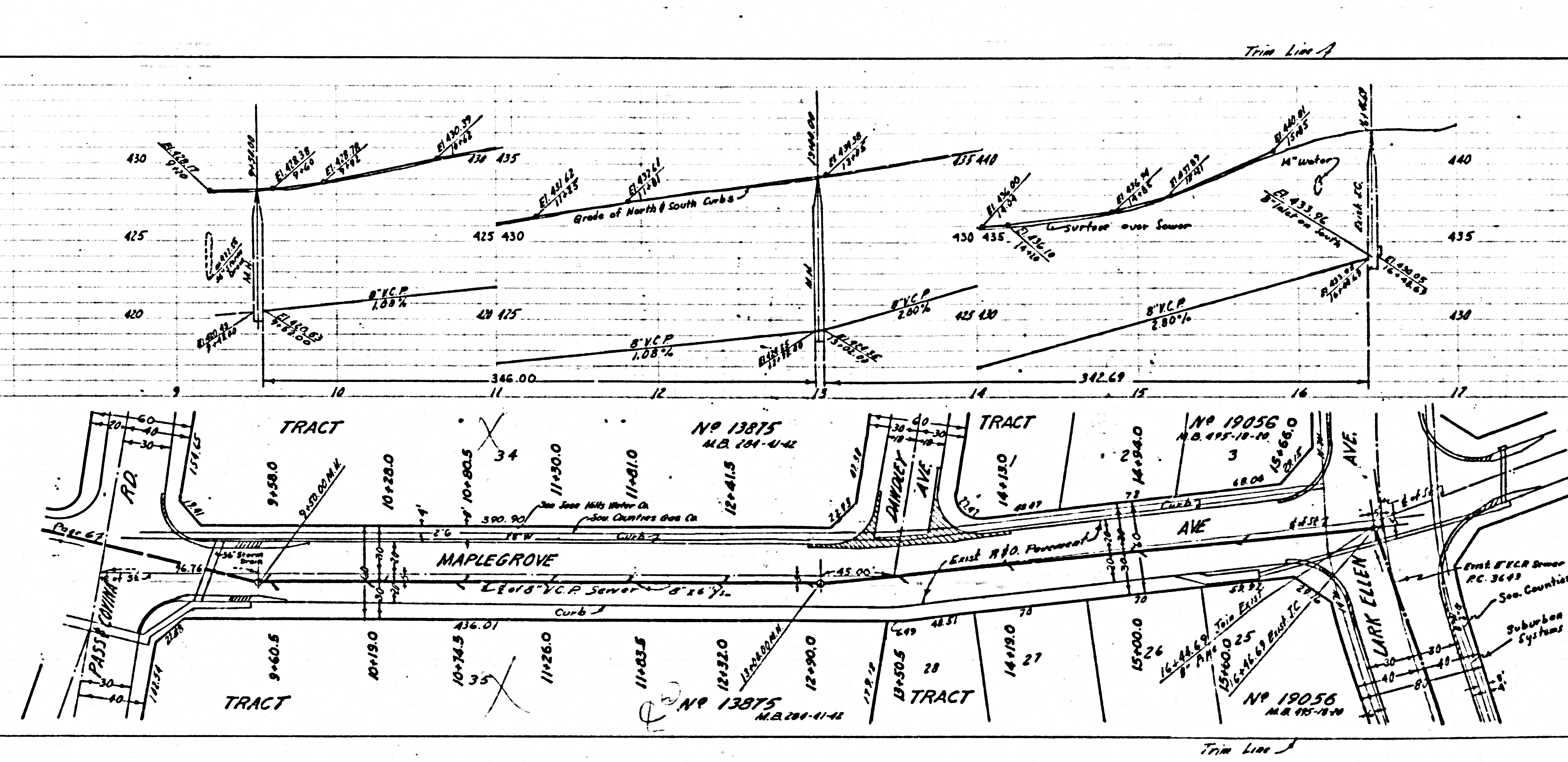
REIMBURSEMENT CHARGE
CALL MAIN OFFICE

ISSUE NO PERMITS
MUST ANNEX TO
SANITATION DISTRICT

22,259

2

TRACT NO 22296
PC 3721
M.R. 284-41-42



Trim Line A

Trim Line B

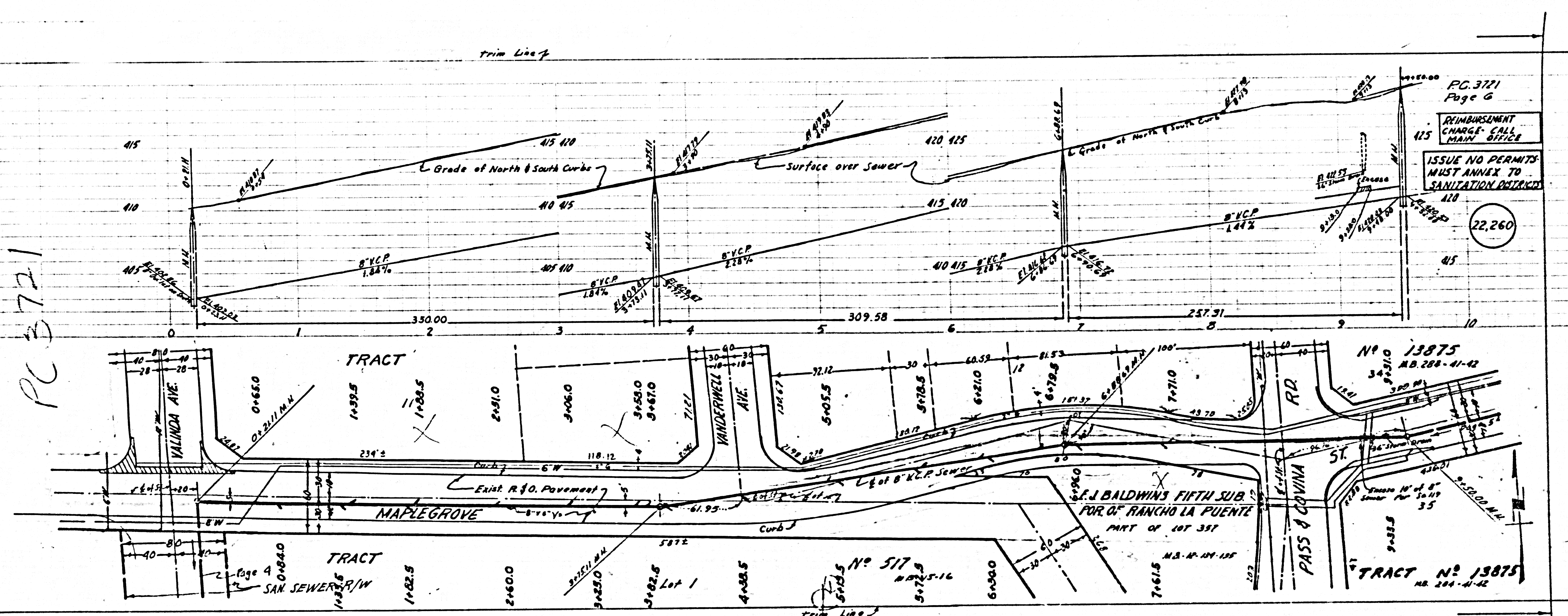
PC 3643

Suburban Water
Systems

San. Counties Gas

Exist 8\"/>

PC 3721



PC 3721
Page 6

REIMBURSEMENT
CHARGE CALL
MAIN OFFICE

ISSUE NO PERMITS
MUST ANNEX TO
SANITATION DISTRICT

22,260

NO 13875
NO. 288-41-42

J. BALDWIN'S FIFTH SUB.
FOR OF RANCHO LA FUENTE
PART OF LOT 357

TRACT NO 13875
NO. 288-41-42

NO 517
NO. 285-16

Flooding
00
00
00
100 ft

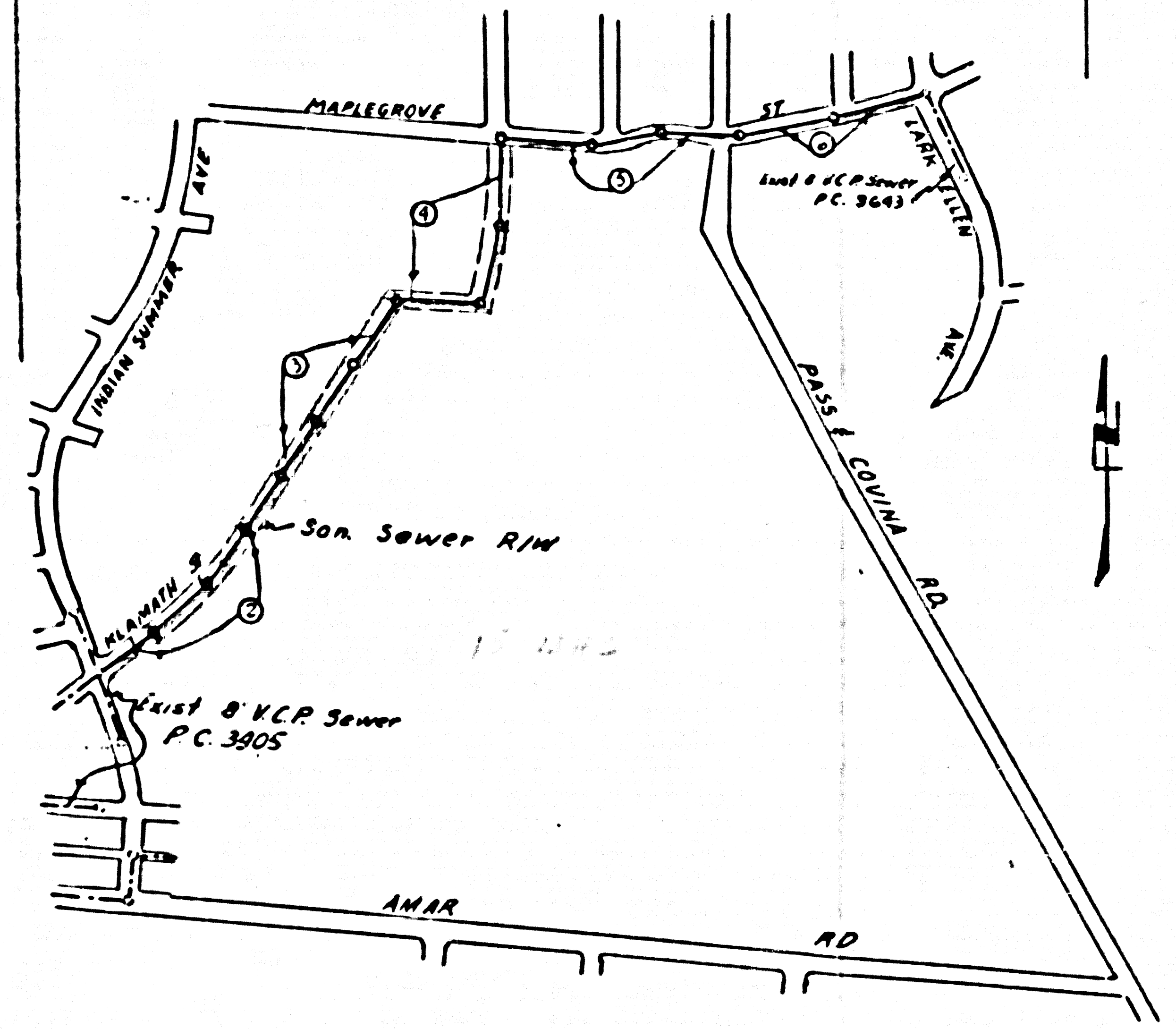
trim line

PUENTE BLDG. DIST. NO 2

NOTE:

- 1 Provide stakes on the property lines or property lines produced at right angle to the line at the center line of each manhole
- 2 No representative of the County Engineer will survey or layout any portion of the work
- 3 The owner or his authorized representative shall furnish the County Engineer with grade sheets and stations for all house laterals and Y branches and shall provide stakes for them at their proper locations with stationing plainly marked. Any change in location shall be requested in writing by the owner or his representative
- 4 No revisions shall be made in these plans without the approval of the County Engineer
- 5 Use standard manhole frames and covers, S-117
- 6 Use standard strength pipe except as noted
- 7 Use cement mortar for all vitrified clay pipe joint
- 8 Resurface all trench within paved area to meet L. A. County Road Dept. or California State Highway Dept. requirements in accordance with permit
- 9 Encase four feet of sewer at points of interference with poles, S-119
- 10 House laterals to be constructed with inverts at property line _____ feet below curb grade except as noted.
- 11 All structures shall be brick sewer structures, S-1104
- 12 For allowable leakage test, use Formula No. 1 Spec's. Sec. 11
- 13 Manhole tops in unimproved Rights-Of-Way to be 6" above finish grade

BM: S.G. 1014 EL 327.027
Set L & B Nail S curb of driveway to house No
876 Glendora Ave. 275' S & 250' E of intersection
Elliot Ave & Glendora Ave 430' E of Bcy of Curb



COLLECT CHARGES AS INDICATED
Curtis 2-22-55

SHEET	PAGES
1	1-4
2	5-6

PAGES 2 & 3 ONLY
INTERSECTING STREETS CHANGED
REVISION APPROVED:
by *R. K. Kuhns* 1-11-56
Office of County Engr. Reg. CE. No. 7860
NOT TO EFFECT THE REIMB. CONTRACT

INDEX MAP
TRACT NO 22296
P.C. 3721
Scale 1" = 600'

4461.14 ft. 8" pipe
Trim Line

PROFILE, ALIGNMENT AND CHASE OF
SANITARY SEWERS
TO BE CONSTRUCTED IN
TRACT NO 22296

THIS PROJECT FINANCED BY A PUBLIC UTILITY
CH. 23, 1256

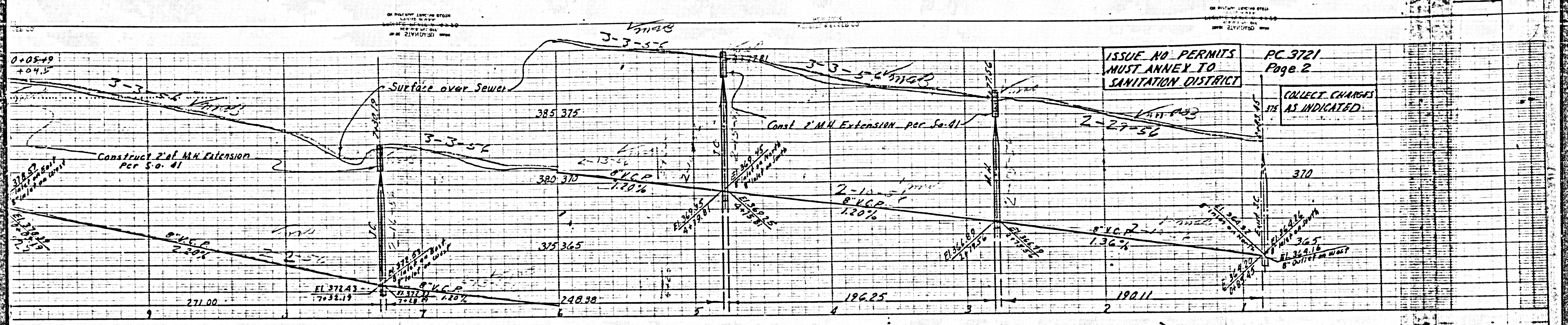
PRIVATE CONTRACT NO. 3721
W. S. 38
2 SHEETS
Scale: VERT. 1" = 4'
HORIZ. 1" = 40'
NOVEMBER 1955
PREPARED IN THE OFFICE OF
Harold L. Johnson
Engr. C. E. No. 7668

FOR LEGEND SEE PLAN NO. S-64

NOTE:

Grades to which this improvement is to be constructed are shown on plans and profiles. Grade sheets for top of curbs, center line of streets, or center line of alleys are shown by circles on profiles. At all points between designated points the grade shall be established so as to conform to a straight line drawn between said designated points.
Elevations are in feet above U.S.C. & G.S. See level datum of 1929.
This drawing and the data hereon are hereby made a part of the specifications.
Work shall be constructed according to specifications on file in the office of the County Engineer and shall be prosecuted only in the presence of the County Engineer.
Before work can be started, the contractor must obtain a permit to excavate in County streets from the L. A. County Road Dept., 108 W. 2nd St. and make a deposit with the County Engineer, Room 324, 233 South Broadway, sufficient to cover the cost of construction inspection and record plans.
Approval of this plan by the County of Los Angeles does not constitute a representation as to the accuracy of the location of or the existence or non-existence of any underground utility, pipe, or structure within the limits of this project. This note applies to all sheets.
If work is to be done in a State Highway, a permit must be obtained from the State of California, Division of Highways, 120 South Spring Street.

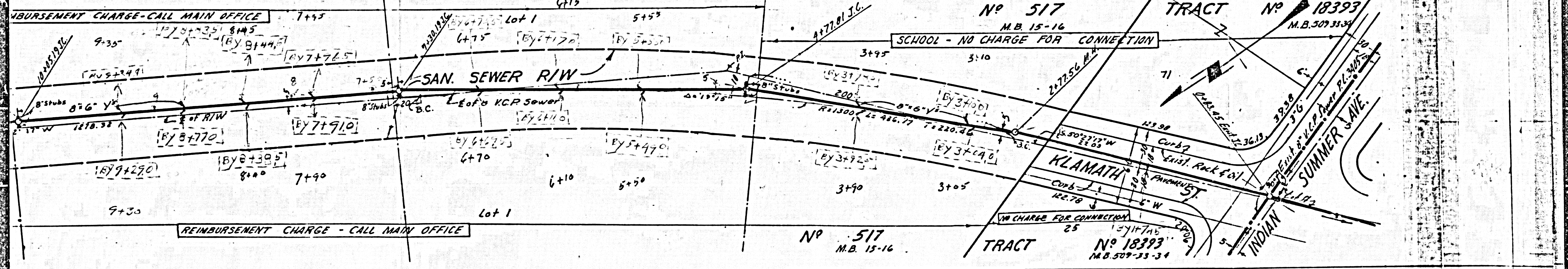
COUNTY OF LOS ANGELES, CALIFORNIA
Approved, John A. Lambie, County Engineer
Approved, A. M. Rawl
CHIEF ENGINEER SAN DIST. NO. 15
A. P. Collins Sanitation Engineer
H. L. Johnson Office Engineer
Checked by: *R. K. Kuhns* 12-22-55
Office of County Engineer, Eng. C. E. No. 7860



ISSUE NO PERMITS
MUST ANNEX TO
SANITATION DISTRICT

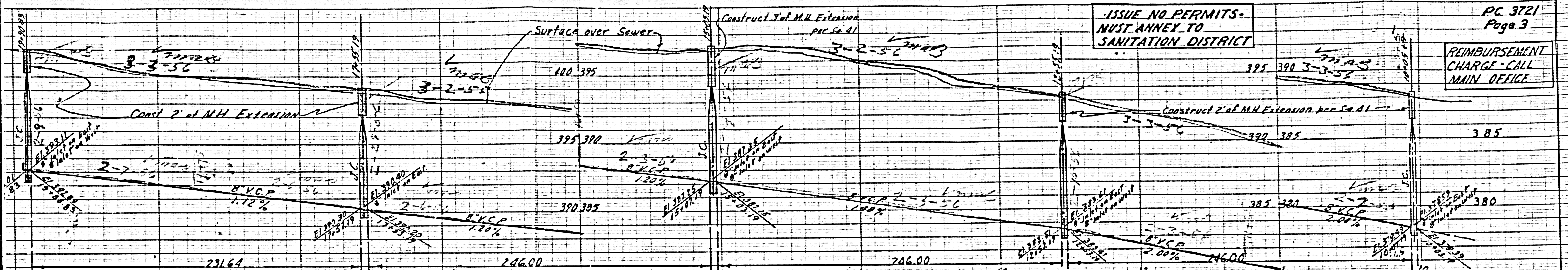
PC 3721
Page 2

COLLECT CHARGES
AS INDICATED



ON PLANTING EXHIBIT FROM
DATE 10/15/16
DRAWN BY: [unclear]
DATE 2/14/16

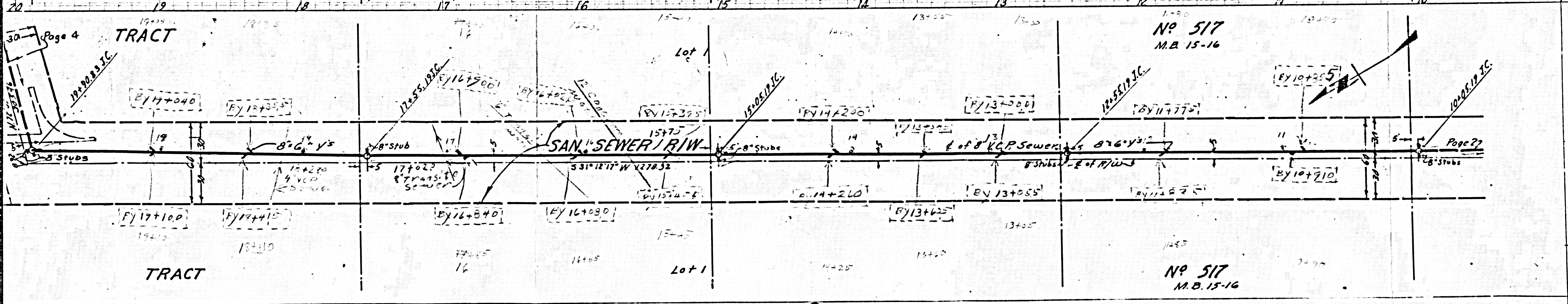
ON PLANTING EXHIBIT FROM
DATE 10/15/16
DRAWN BY: [unclear]
DATE 2/14/16



ISSUE NO. PERMITS -
MUST ANNEX TO
SANITATION DISTRICT

PC 3721
Page 3

REIMBURSEMENT
CHARGE - CALL
MAIN OFFICE



No 517
M.B. 15-16

No 517
M.B. 15-16

3

ON PLANNING, SURVEYING, ENGINEERING, ARCHITECTURE, INTERIOR DESIGN, LANDSCAPE ARCHITECTURE, AND OTHER PROFESSIONAL SERVICES.

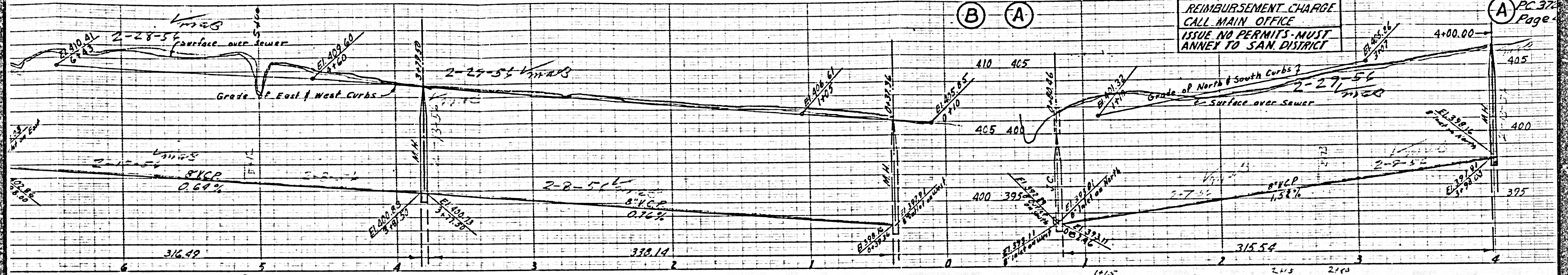
Trim Line 3

ON PLANNING, SURVEYING, ENGINEERING, ARCHITECTURE, INTERIOR DESIGN, LANDSCAPE ARCHITECTURE, AND OTHER PROFESSIONAL SERVICES.

REPLACES SHEET NO. 1

REIMBURSEMENT CHARGE
CALL MAIN OFFICE
ISSUE NO PERMITS - MUST
ANNEX TO SAN DISTRICT

PC 372
Page 4



Trim Line 4

MEMPHIS LIGHTING SYSTEM
MEMPHIS, TENN.
MEMPHIS, TENN.
MEMPHIS, TENN.

MEMPHIS
MEMPHIS, TENN.
MEMPHIS, TENN.

MEMPHIS LIGHTING SYSTEM
MEMPHIS, TENN.
MEMPHIS, TENN.
MEMPHIS, TENN.

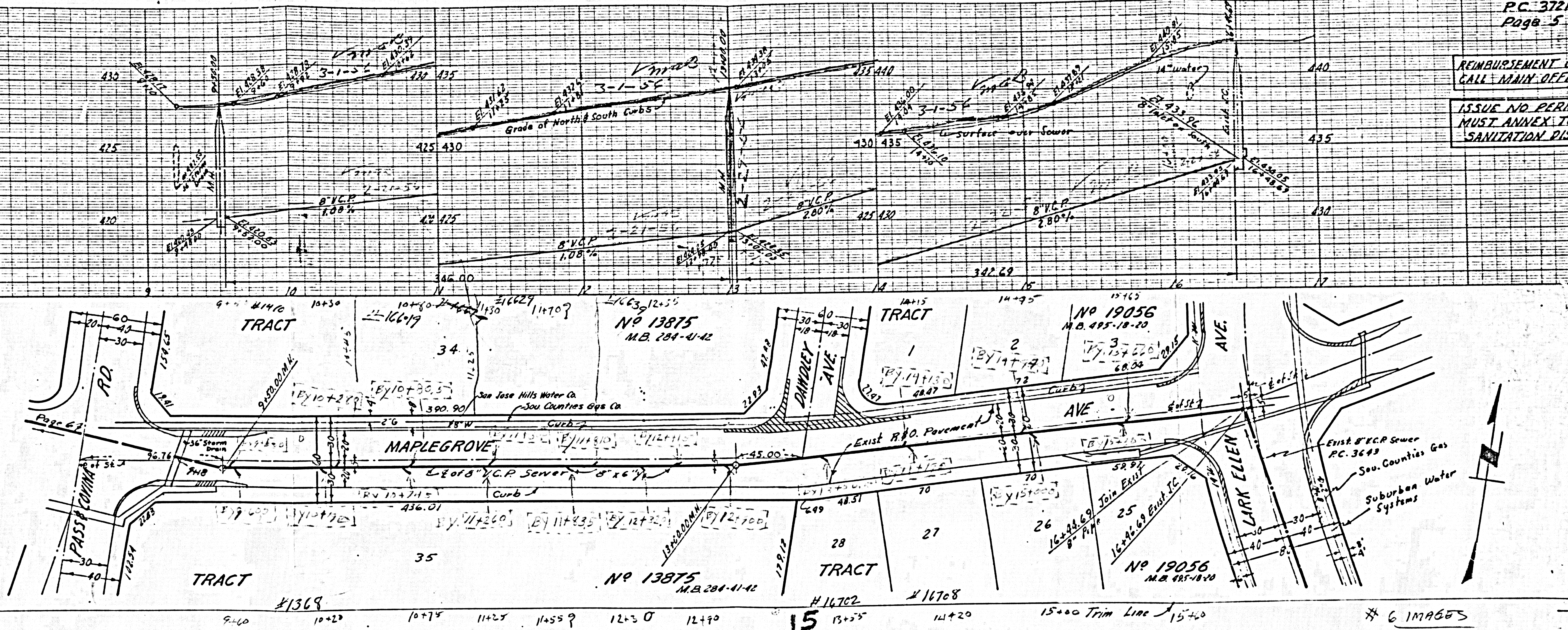
Trim Line A

MEMPHIS
MEMPHIS, TENN.
MEMPHIS, TENN.

PC 3721
Page 5

REIMBURSEMENT CHARGE
CALL MAIN OFFICE

ISSUE NO PERMITS
MUST ANNEX TO
SANITATION DISTRICT



12

* 6 IMAGES

R.S.

ON MILLIMETER GRADINGS SYSTEM
SCALE 1" = 10'
DATE 2/14/56

trim line

MEM JOHN
KRELLER PAPER CO

$$\frac{2.4}{2.4} = \frac{7}{7} \times \frac{7}{7}$$

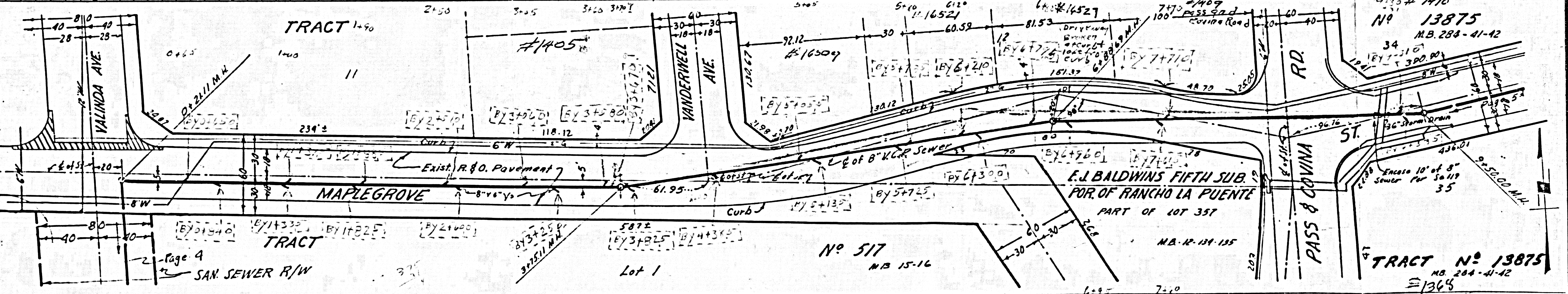
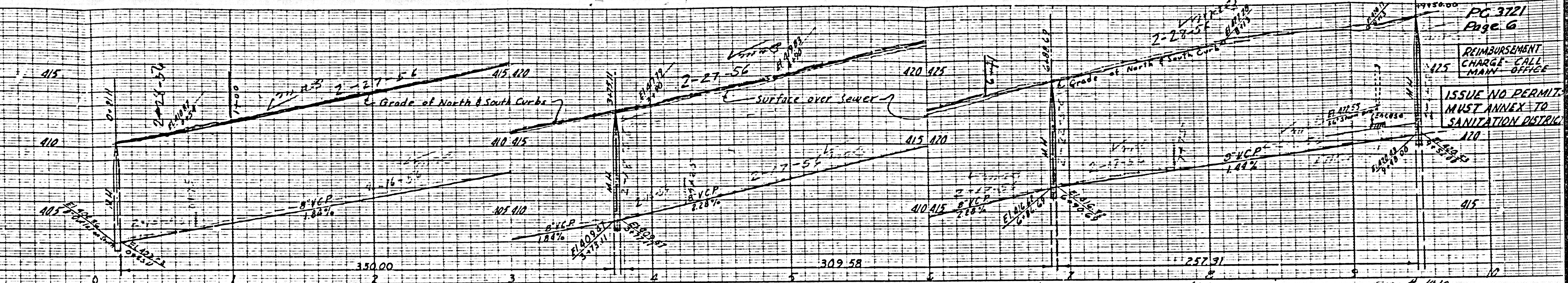
11/7

ON MILLIMETER GRADINGS SYSTEM
SCALE 1" = 10'
DATE 2/14/56

PG 3721
Page 6

REIMBURSEMENT
CHARGE - CALL
MAN - OFFICE

ISSUE NO PERMIT
MUST ANNEX TO
SANITATION DISTRICT



Page 4
SAN. SEWER R/W

Lot 1

No 517
M.B. 15-16

M.B. 12-13-15

TRACT No 13875
M.B. 284-41-42
#1365
Material Sta. 8+75

0+95 1+35 1+95 2+60 3+26 3+80 4+45 5+15 5+75 6+30 7+00

6 trim line
5+15

5+75 6+30 6+90

#1377

Material Sta. 8+75