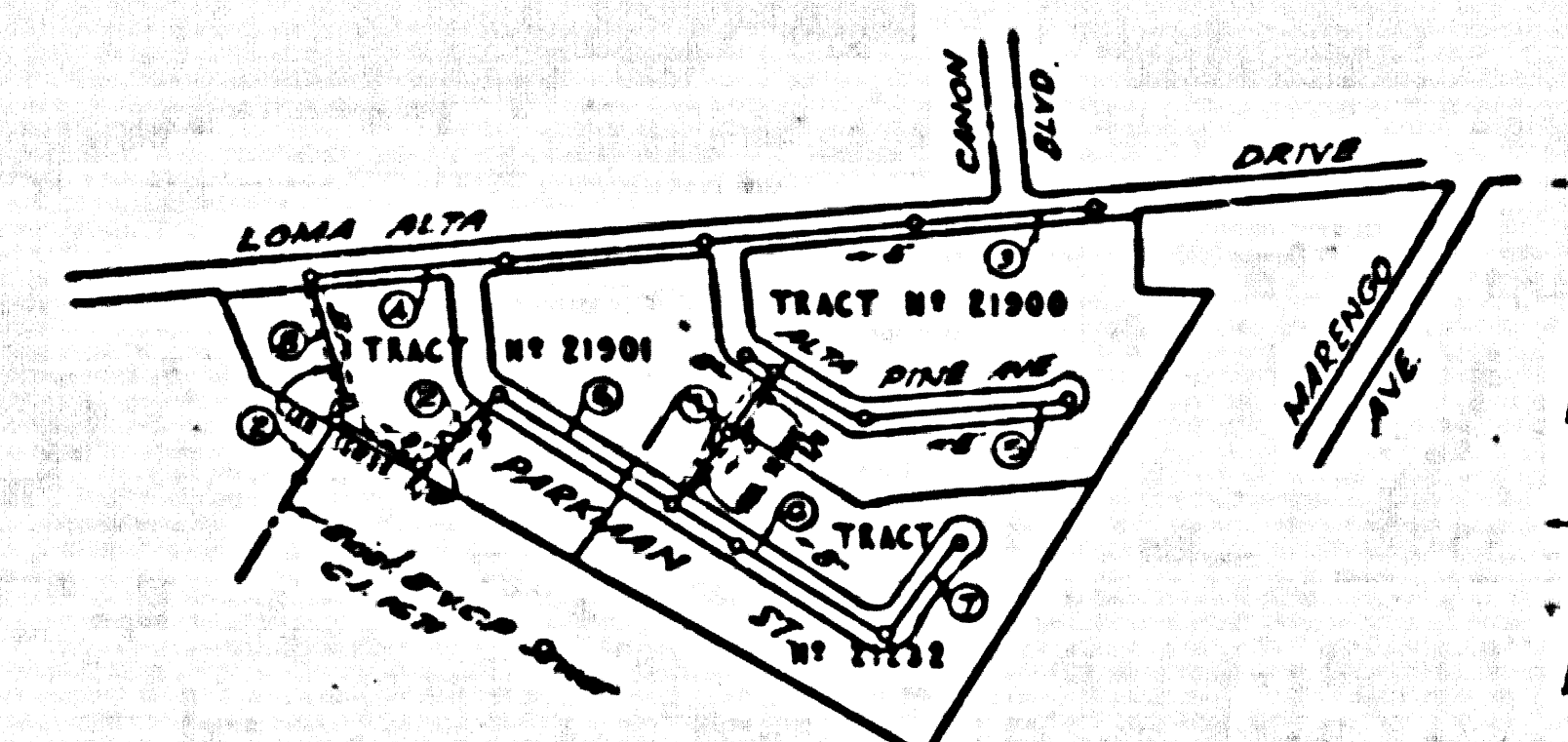


**ALTADENA BUILDING DISTRICT No 3  
DOUBLE SCALE**

**NOTE:**

- Provide stakes on the property lines or property lines produced at right angles to the sewer line at the center line of each manhole.
- No representative of the County Engineer will survey or layout any portion of the work.
- The owner or his authorized representative shall furnish the County Engineer with grade sheets and stations for all house laterals and Y branches and shall provide stakes for them at their proper locations with stationing plainly marked. Any change in location shall be requested in writing by the owner or his representative.
- No revisions shall be made in these plans without the approval of the County Engineer.
1. Use standard manhole frames and covers, S-a-117.
  2. Use standard strength pipe except as noted.
  3. Use cement mortar for all vitrified clay pipe joints.
  4. Resurface all trench within paved area to meet L.A. County Road Dept. or California State Highway Dept. requirements in accordance with permit.
  5. Encase four feet of sewer at points of interference with poles, S-a-119.
  6. House laterals to be constructed with inverts at property line  $\frac{1}{2}$  feet below curb grade except as noted.
  7. All structures shall be brick sewer structures, S-a-104.
  8. For allowable leakage test, use Formula No. 1, Spec's, Sec. 51.
  9. Manhole tops in unimproved Rights-Of-Way to be 6" above finish grade.

Road Dept. AM #7, LA 35-21, Plan 1754 B16  
Map on @ intersection of East Loma Alta Dr  
and Altadena Ave



**INDEX MAP  
P.C. 3724  
Scale: 1"=400'**

SHEET	PAGE
1	1-2
2	3-6

Figures in Circles Indicate Page Numbers

**Connection Charges  
As Indicated  
To Costed 11-21-55**

**PROFILE, ALIGNMENT AND GRADE OF  
SANITARY SEWERS  
TO BE CONSTRUCTED IN**

**TRACT 21332  
TRACT 21300  
TRACT 21301**

**PRIVATE CONTRACT NO. 3724  
W. S. 50  
2 SHEETS**

Scale: VERT. 1"=4'  
HORIZ. 1"=40'  
OCT. 1955

PREPARED IN THE OFFICES OF  
**LEONARD H. GOWDY**

*Leonard H. Gowdy*  
Reg. C.E. No. 4822

FOR LEGEND SEE PLAN NO. S-a-64

**NOTE:**

Grades to which this improvement is to be constructed are shown on plans and profiles. Grade points for top of curb, center line of street, or center line of alley are shown by circles on profiles. At all points between designated points the grade shall be established so as to conform to a straight line drawn between said designated points.

Elevations are in feet above U.S.G.S. datum or mean sea level.

This drawing and the data hereon are hereby made a part of the specifications.

Work shall be constructed according to specifications on file in the office of the County Engineer and shall be prosecuted only in the presence of the County Engineer.

Before work can be started, the contractor must obtain a permit to excavate in County streets from the L.A. County Road Dept., 108 W. 2nd St. and make a deposit with the County Engineer, 524 Pan-American Bldg, 253 So Broadway, sufficient to cover the cost of construction inspection and record plans.

Approval of this plan by the County of Los Angeles does not constitute a representation as to the accuracy of the location of or the existence or non-existence of any underground utility, pipe, or structure within the limits of this project. This note applies to all sheets.

If work is to be done in a "Clear Highway" a permit must be obtained from the State of California, Division of Highways, 120 South Spring Street.

**COUNTY OF LOS ANGELES, CALIFORNIA**

Approved, John A. Lamb, County Engineer  
*J. A. Lamb*  
Approved, A. M. Egan  
*A. M. Egan*  
Checked by *R. H. ...*  
Office of County Engineer, Reg. C. E. No. 7860

P.C. 3724  
PAGE 1  
DOUBLE SCALE

22,752

(8)

TRACT No 21332  
TRACT No 21300  
TRACT No 21301

SCALE

1"=40'

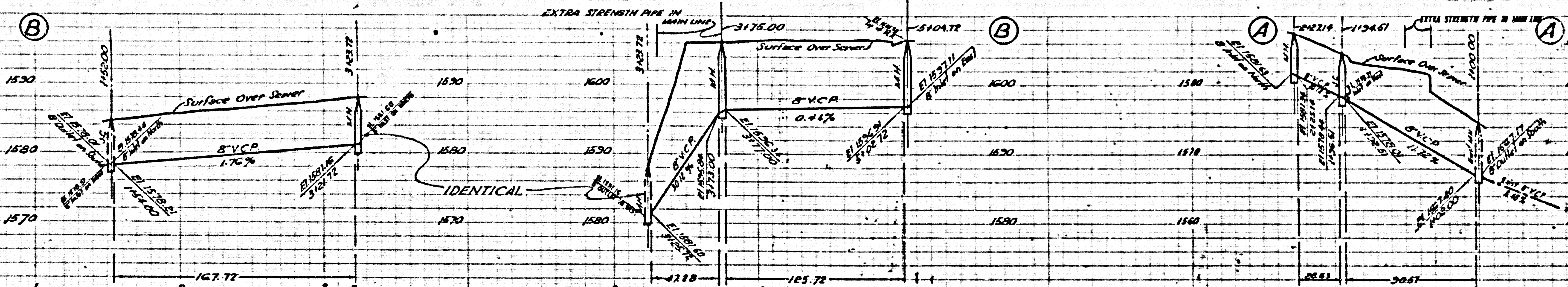
(MARIPELO ST)

Checked 6-1-56 McLaren  
(4)

Trim Line

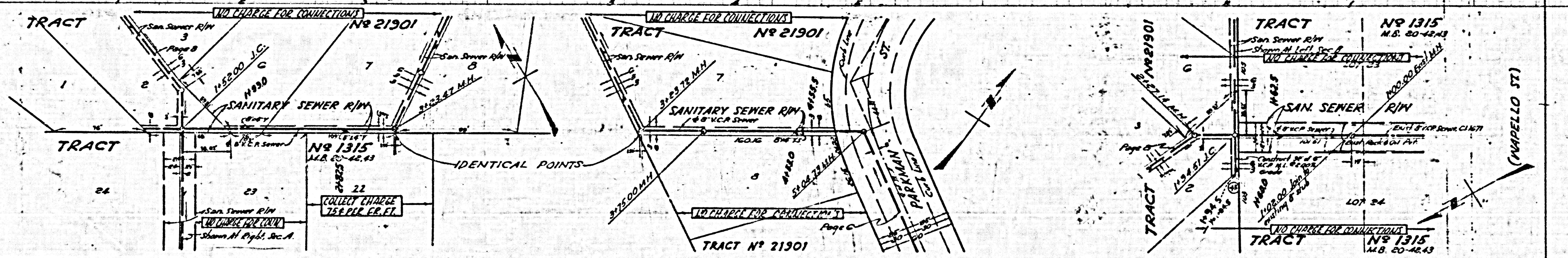
PC 3724  
PAGE 3  
DOUBLE SCALE  
COLLECT CHARGES  
AS INDICATED

22754



PC 3724  
PAGE 2  
DOUBLE SCALE  
COLLECT CHARGES  
AS INDICATED

22753

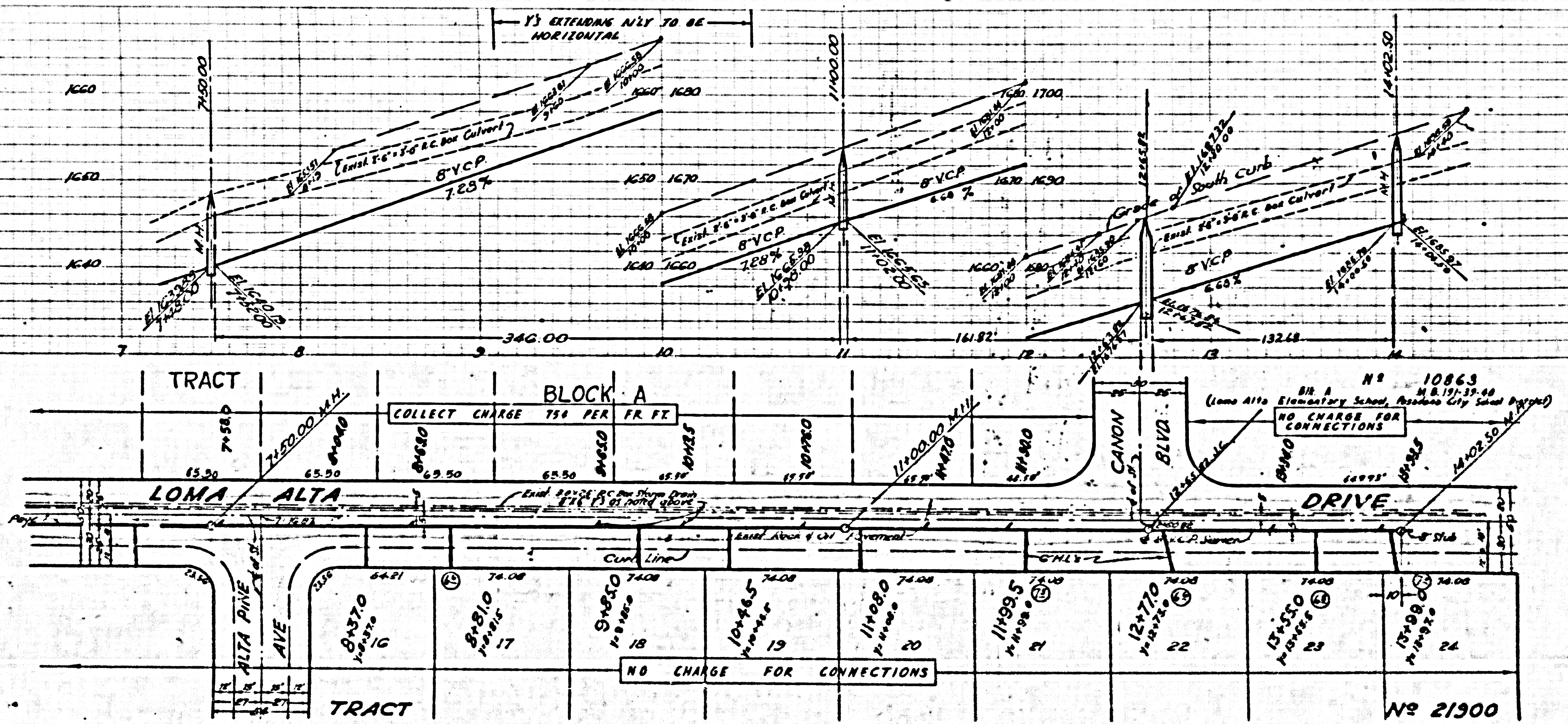


(13)

PC. 3724  
PAGE 4  
DOUBLE SCALE

COLLECT CHARGES  
AS INDICATED

22755

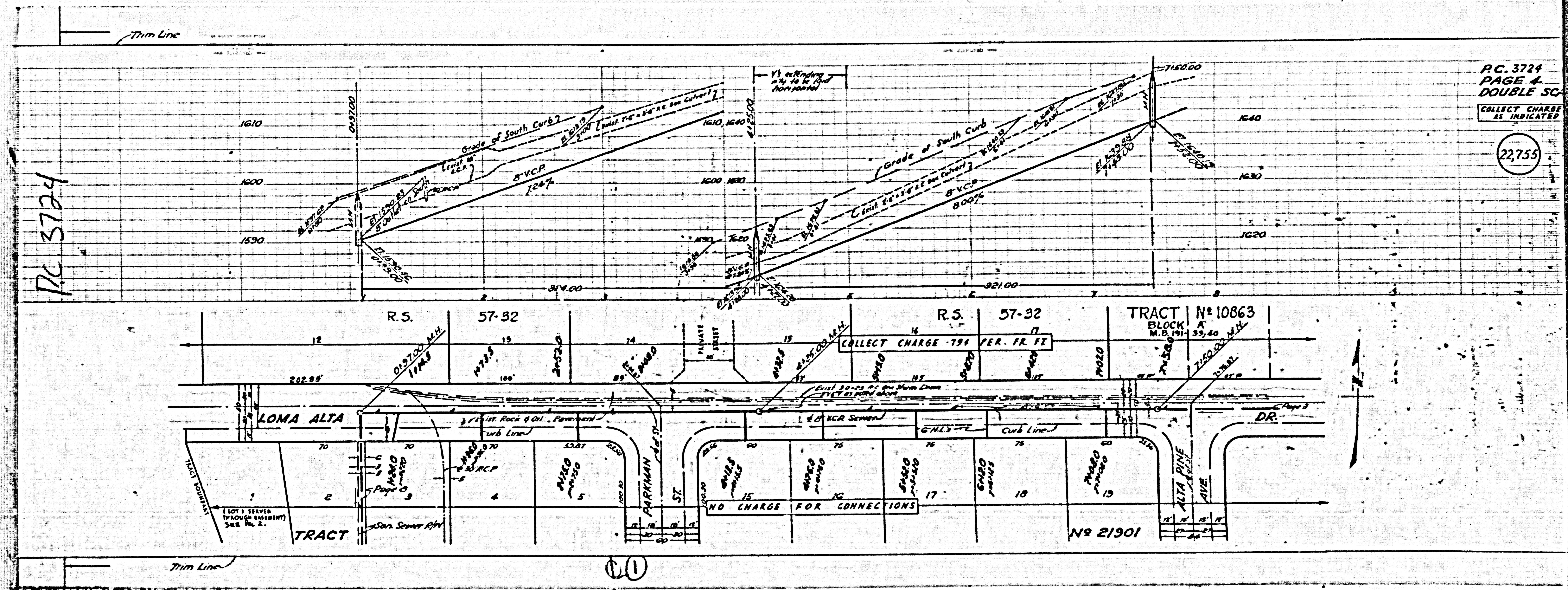


PC. 3724  
PAGE 3  
DOUBLE SCALE

COLLECT CHARGES  
AS INDICATED

22754

2



PC 3724

PC 3724  
PAGE 4  
DOUBLE SC  
COLLECT CHARGE  
AS INDICATED

22755

TRACT N° 10863  
BLOCK A  
M.B. 191-35,40

R.S. 57-32

R.S. 57-92

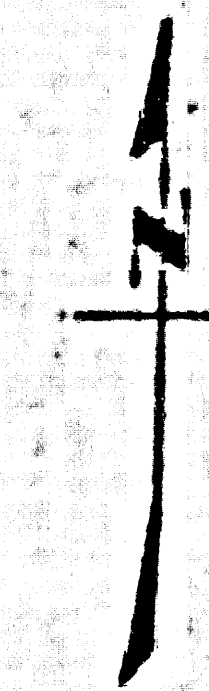
LOMA ALTA

TRACT

NR 21901

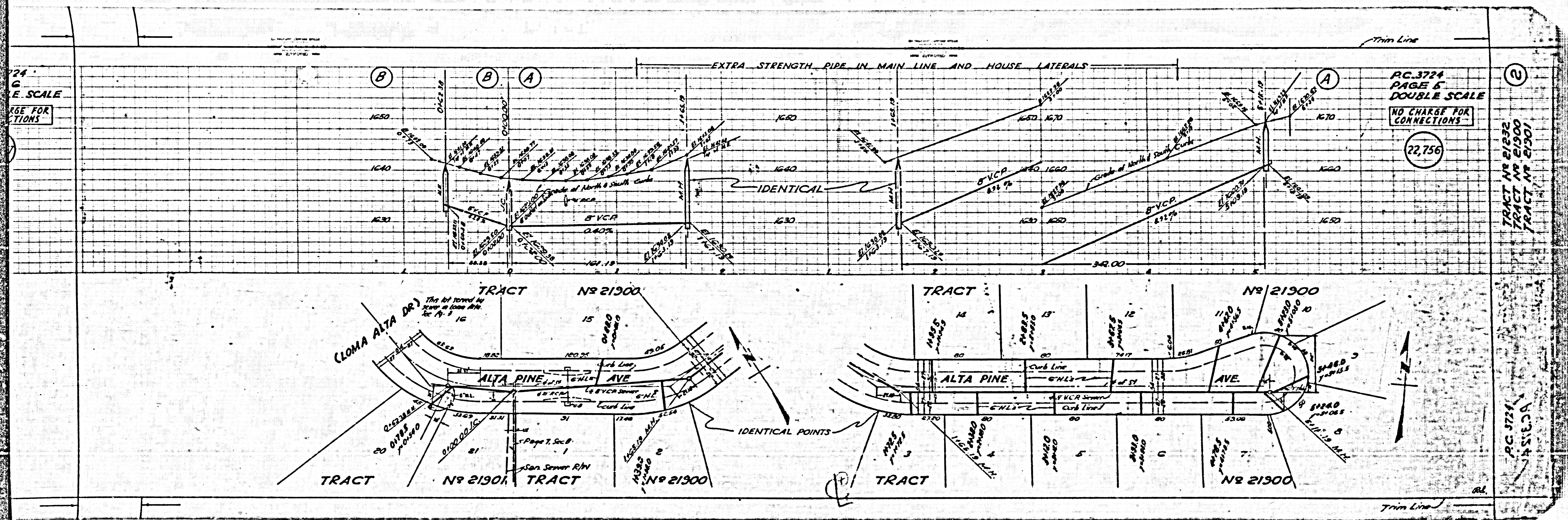
COLLECT CHARGE .75 PER. FR. FT

NO CHARGE FOR CONNECTIONS



11

24  
G  
E SCALE  
SEE FOR  
NOTATIONS



PC 3724  
PAGE 6  
DOUBLE SCALE  
NO CHARGE FOR  
CONNECTIONS

(2)

TRAJECT NO. 21902  
TRAJECT NO. 21900  
TRAJECT NO. 21901

Trim Line

PC 3724  
PAGE 7  
DOUBLE SCALE

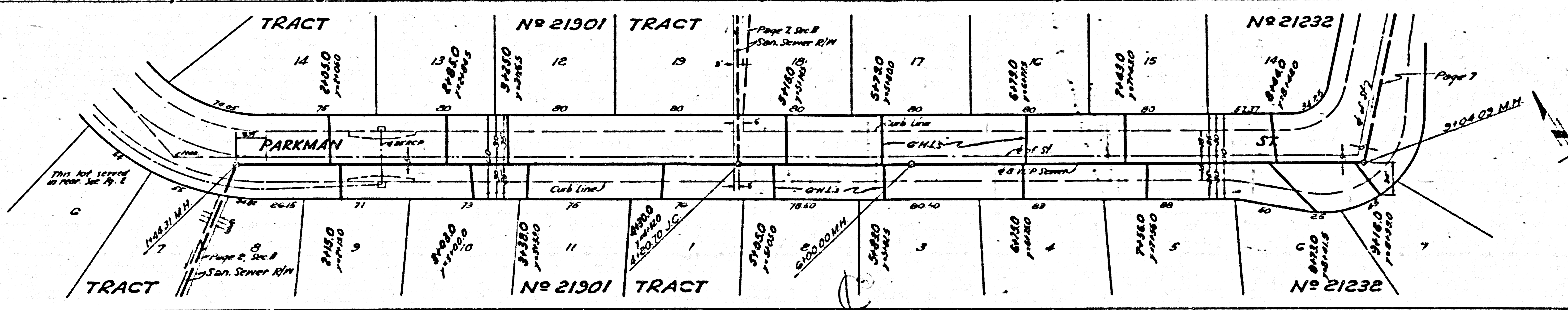
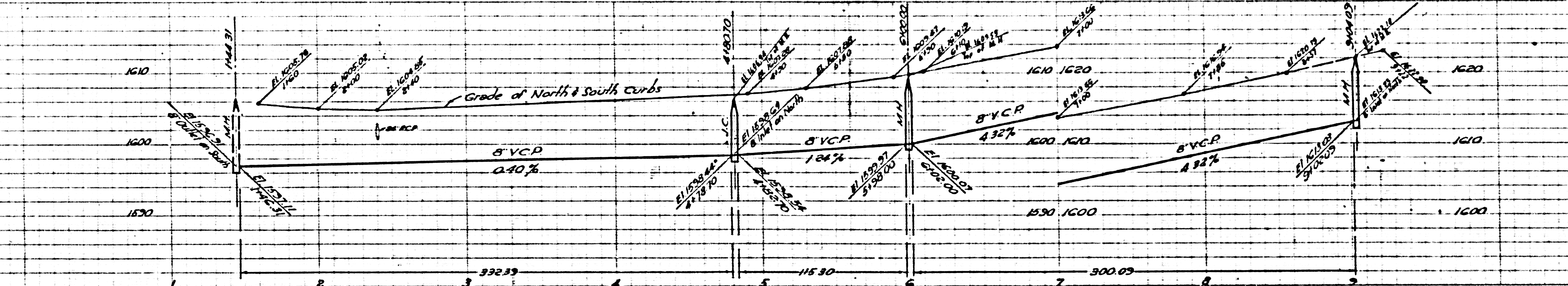
NO CHARGE FOR  
CONNECTIONS

22,756

PC 3724  
PAGE 6  
DOUBLE SCALE

NO CHARGE FOR  
CONNECTIONS

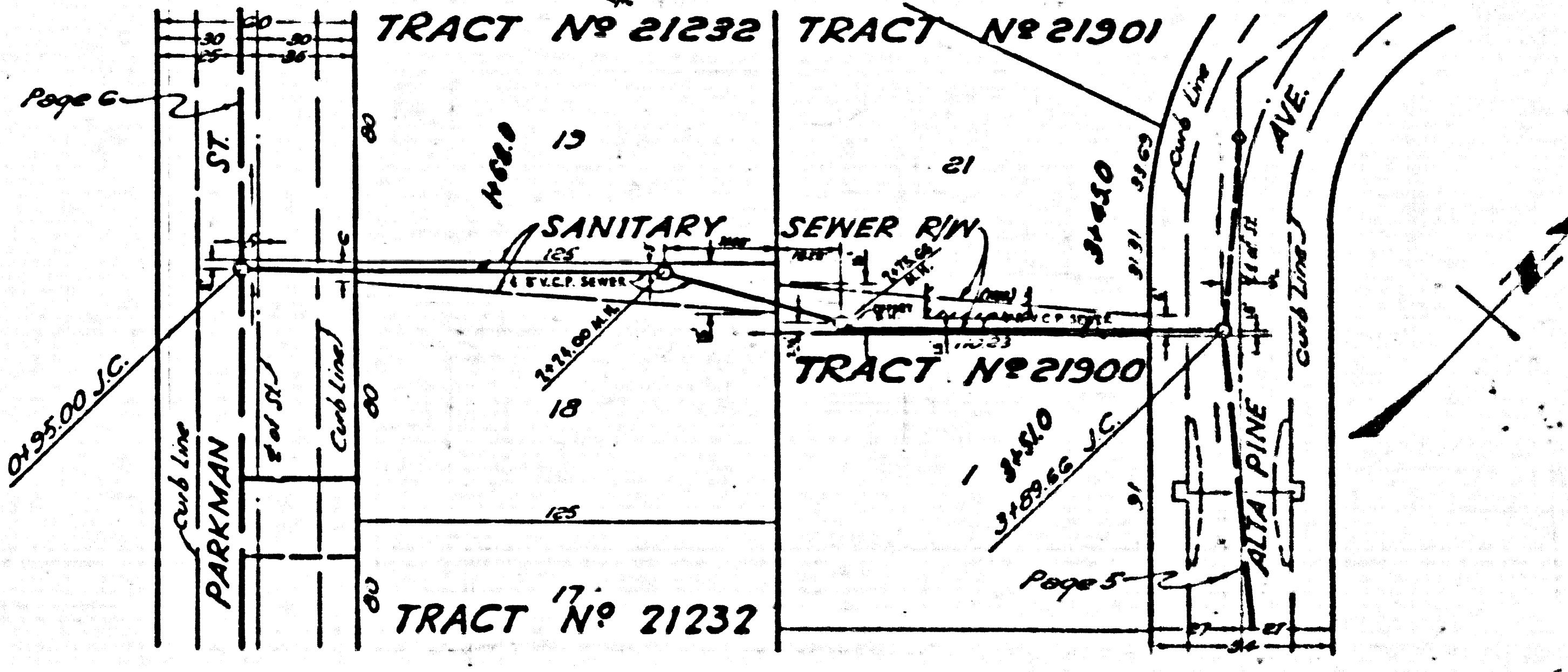
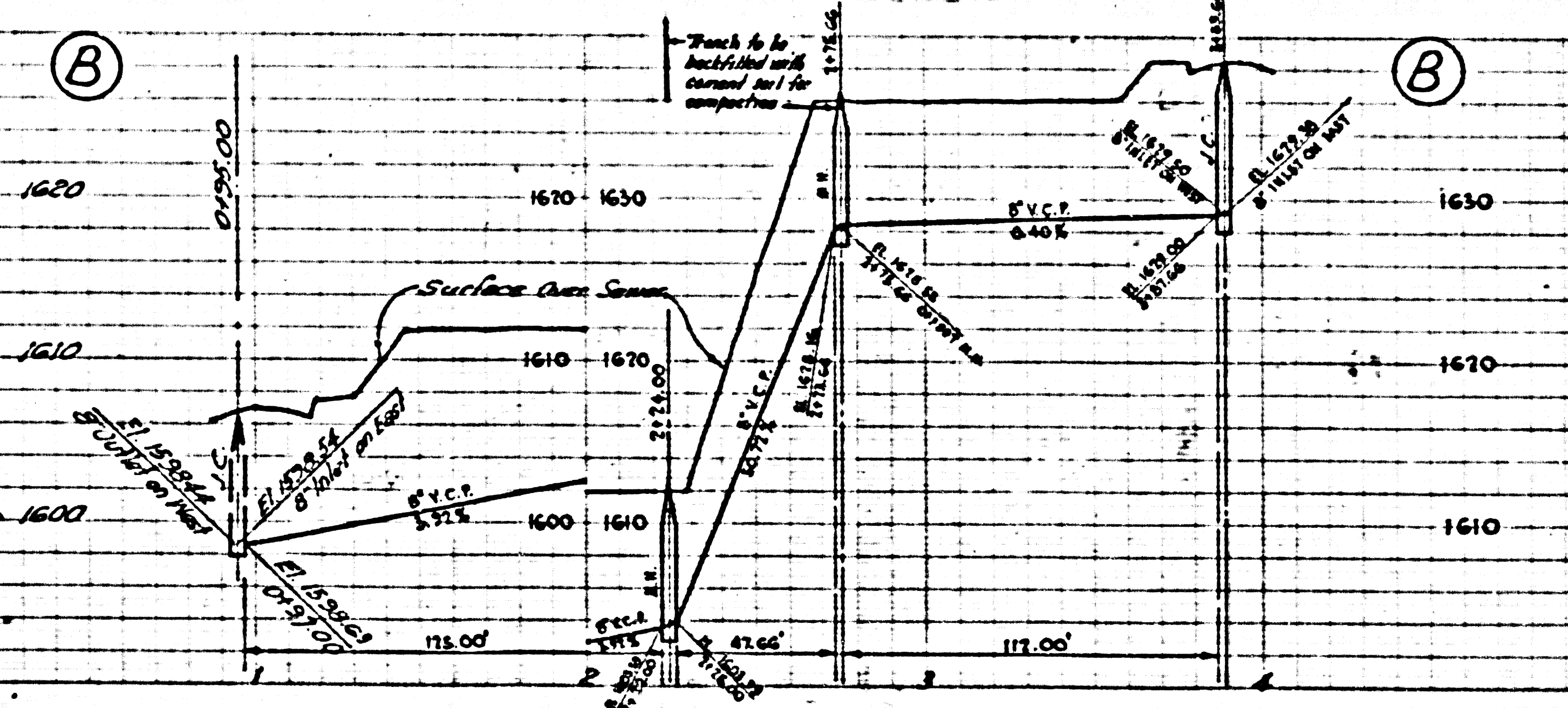
22,757



PC 3724  
PAGE 8  
DOUBLE SCALE

NO CHARGE FOR CONNECTIONS

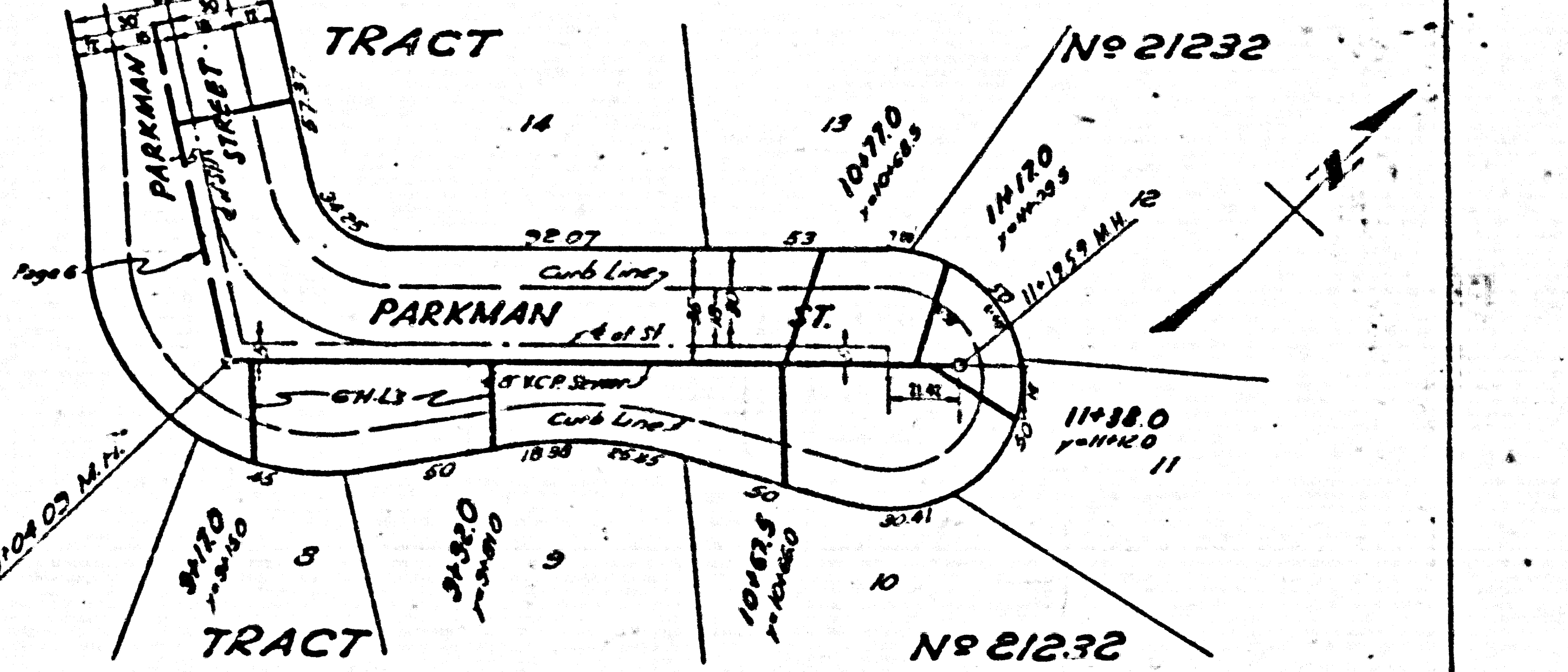
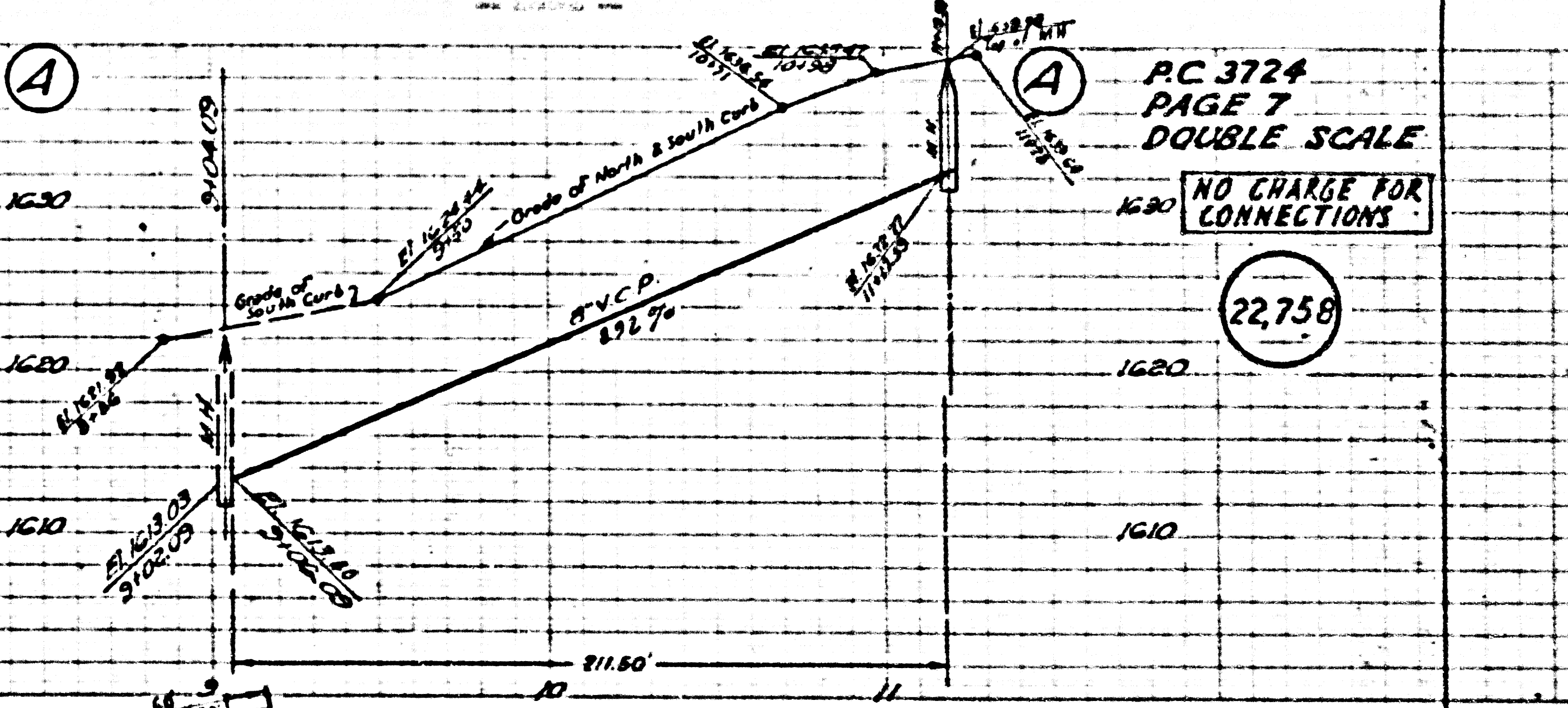
22,759



PC 3724  
PAGE 7  
DOUBLE SCALE

NO CHARGE FOR CONNECTIONS

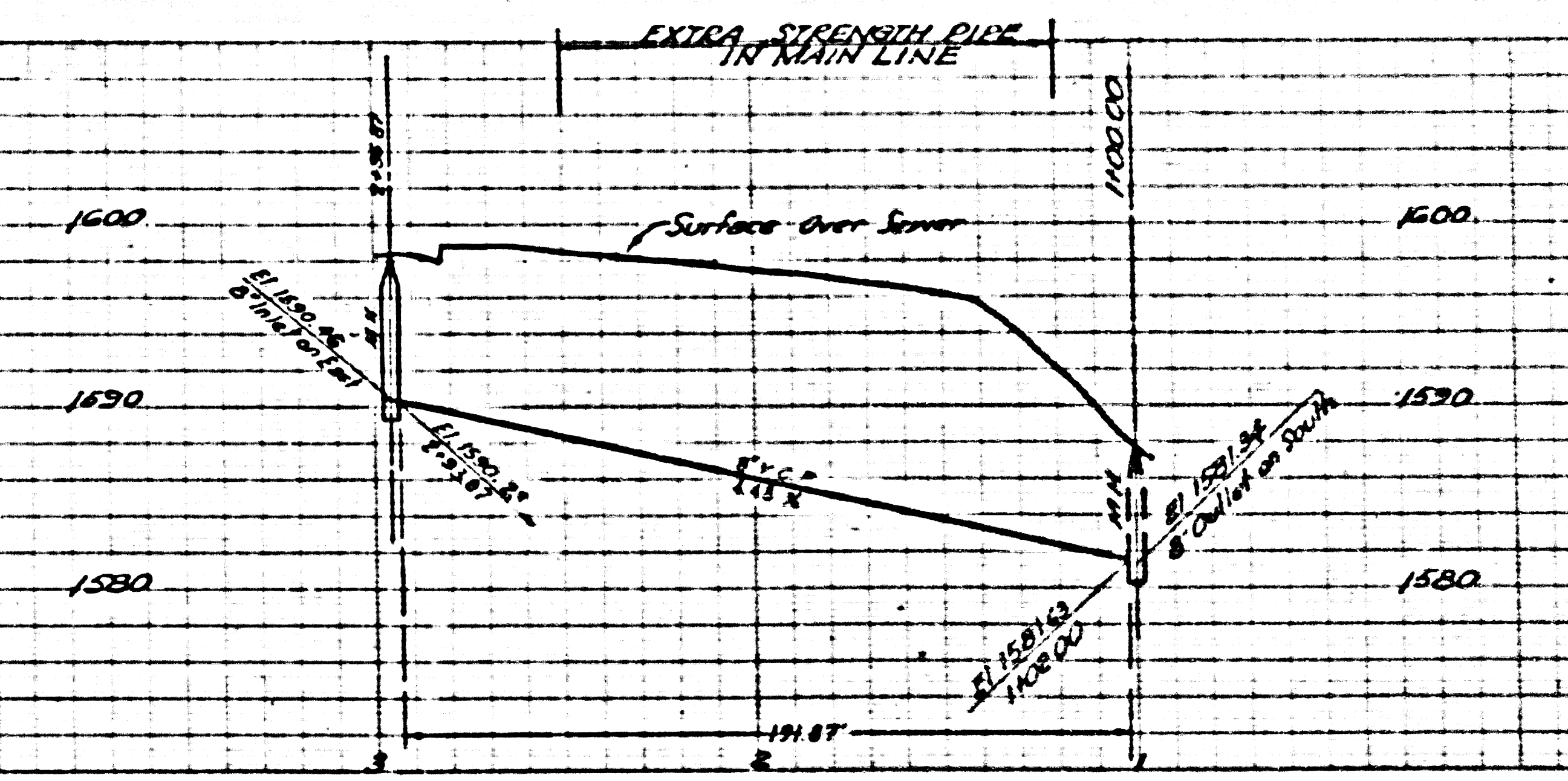
22,758



REVISION:  
PAGES 5 & 7 R/W FROM ALTA PINE  
AVE TO PARKMAN ST. - 1 MANHOLE  
ADDED AND SEWER LOCATION REVISED.

APPROVED: *S. K. Oude* 3/15/56  
OFFICE OF COUNTY ENGINEER  
REG. C.E. 9406

Trim Line

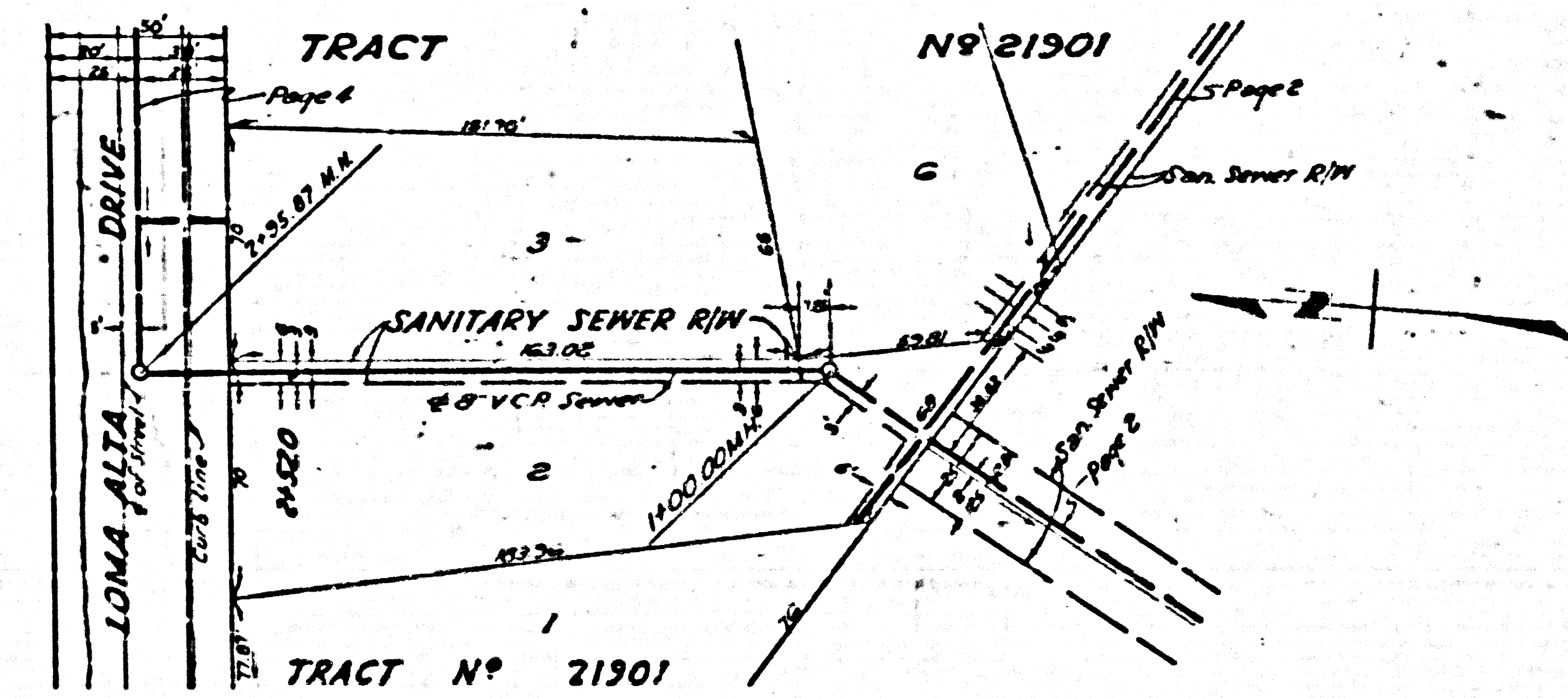


PC. 3724  
PAGE 8  
DOUBLE SCALE

NO CHARGE FOR CONNECTIONS

22,759

PC. 3724



Trim Line

Handwritten scribbles and a vertical line at the bottom of the page.