

SCALE  
1750

COLLECT CHARGES AS INDICATED

1780

1770

1760

1750

1740

1730

1720

1710

1700

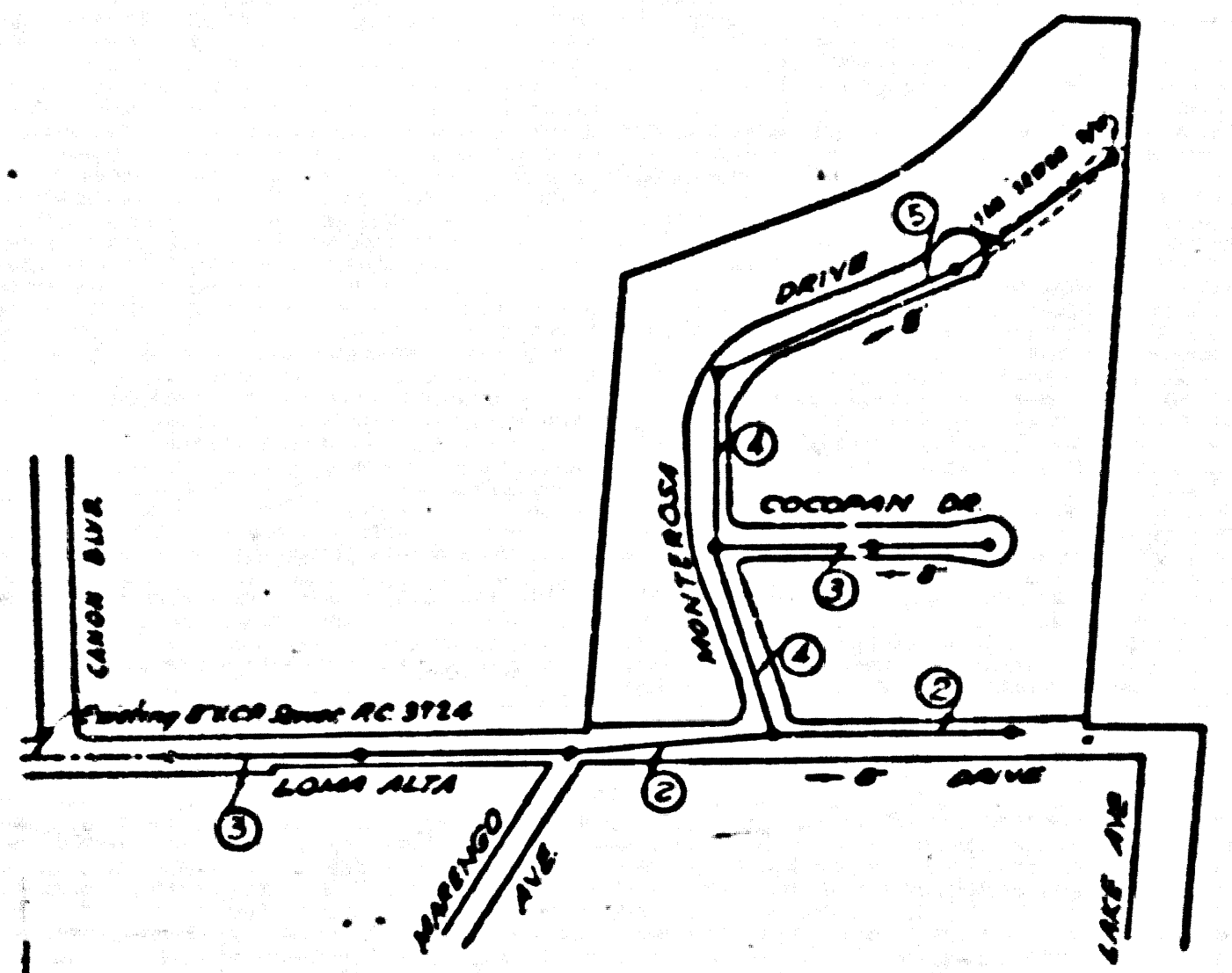
1690

1680

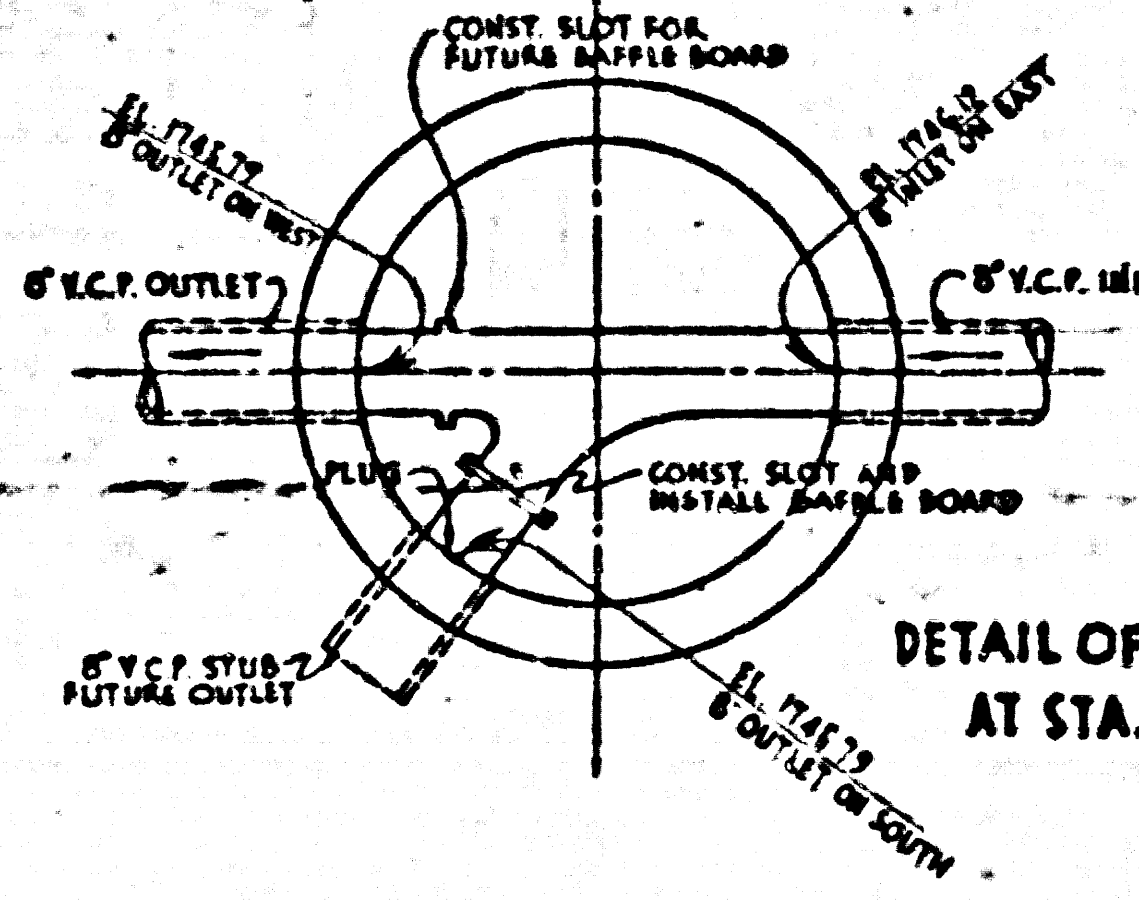
1670

1660

814, L.B. 25-27 Elev. 1808.676.  
L.B. 25 in North end of conc. slab of stone & concrete  
bench 201 East of 8 of North Lemo Ave produced 1911  
North of the 8 of East Lemo Ave Dr. produced



SHEET	PAGES
1	1-5



DETAIL OF J.C. BASE  
AT STA. 7+00.76

INDEX MAP  
RC 3726  
SCALE: 1"=300'  
TRACT NO 18250

### ALTADENA BUILDING DISTRICT NO 3 DOUBLE SCALE

- NOTE:**
- Provide stakes on the property lines or property lines produced at right angles to the sewer line at the center line of each manhole.
- No representative of the County Engineer will survey or layout any portion of the work.
- The owner or his authorized representative shall furnish the County Engineer with grade sheets and stations for all house laterals and V branches and shall provide stakes for them at their proper locations with streamers plainly marked. Any change in location shall be requested in writing by the owner or his representative.
- No revisions shall be made in these plans without the approval of the County Engineer.
1. Use standard manhole frames and covers, S-o-117.
  2. Use standard strength pipe except as noted.
  3. Use cement mortar for all vitrified clay pipe joints.
  4. Resurface all trench within paved area to meet L.A. County Road Dept. or California State Highway Dept. requirements as accordance with permit.
  5. Excavate four feet of cover at points of interference with poles, S-o-119.
  6. House laterals to be constructed with inverts at property line \_\_\_\_\_ feet below curb grade except as noted.
  7. All structures shall be brick sewer structures, S-o-104, (except as noted).
  8. For allowable leakage test, see Formula No. \_\_\_\_\_, Spec's, Sec. 51.
  9. Figures in circles indicate depth of house laterals, at property line, below curb line. (9)

COLLECT CHARGES AS INDICATED  
*L. Curtis 11-21-55*

Checked 4-13-56 *W. Brown*

(15)

PROFILE, ALIGNMENT AND GRADE OF  
SANITARY SEWERS  
TO BE CONSTRUCTED IN  
TRACT NO 18250

PRIVATE CONTRACT NO. 3726  
W. S. 50  
1 SHEET  
OCT 1955  
PREPARED IN THE OFFICES OF  
LEONARD H. GOWDY  
No. C. E. No. 4822

FOR LEGEND SEE PLAN NO. S-o-64

**NOTE:**

Grades to which this improvement is to be constructed are shown on plans and profiles. Grade points for top of curbs, center line of streets, or center line of alleys are shown by circles on profiles. All other points between designated points the grade shall be established so as to conform to a straight line drawn between said designated points.

Elevations are in feet above U.S.G.S. datum or mean sea level.

This drawing and the data herein are hereby made a part of the specifications.

Work shall be constructed according to specifications on file in the office of the County Engineer and shall be prosecuted only in the presence of the County Engineer.

Before work can be started the contractor must obtain a permit to excavate in County Street from L.A. County Public Dept. No. 101 and must make a deposit with the County Engineer, No. 148, An American Day, 253 26 Building, sufficient to cover cost of construction materials and record permit.

Approval of this plan by the County of Los Angeles does not constitute a representation as to the accuracy of the location of or the existence or non-existence of any underground utility, pipe, or structure within the limits of this project. This note applies to all sheets.

If work is to be done on a State Highway, a permit must be obtained from the State of California, Division of Highways, 120 South Spring Street.

COUNTY OF LOS ANGELES, CALIFORNIA

Approved, John A. Leslie County Engineer  
Approved, A. M. Rawn  
A. P. Collins  
Office Engineer  
Checked by *R. H. ... 11-21-55*  
Office of County Engineer, Dep. C. E. No. 7810

PC 3726  
PAGE 1  
DOUBLE SCALE

22,420

(5)

TRACT NO 18250

TRACT NO 18250  
RC 3726

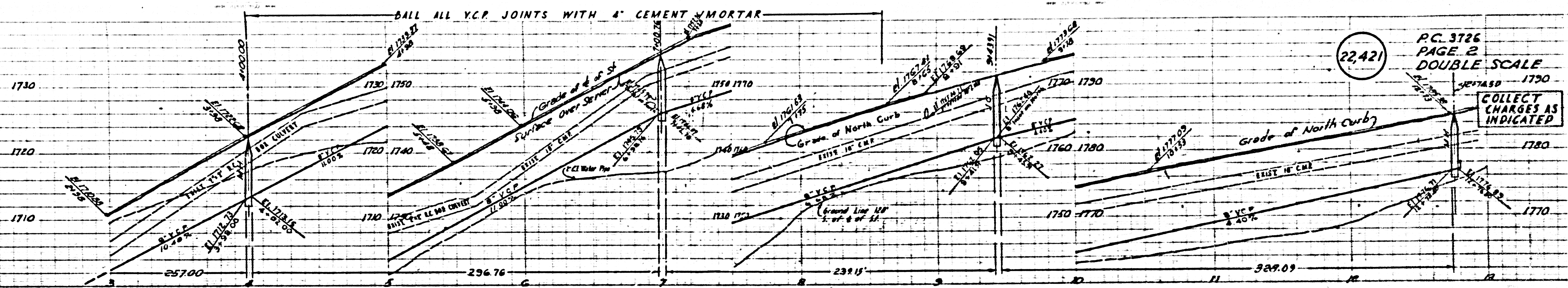
Rel.



PC. 3726  
PAGE 3  
DOUBLE SCALE

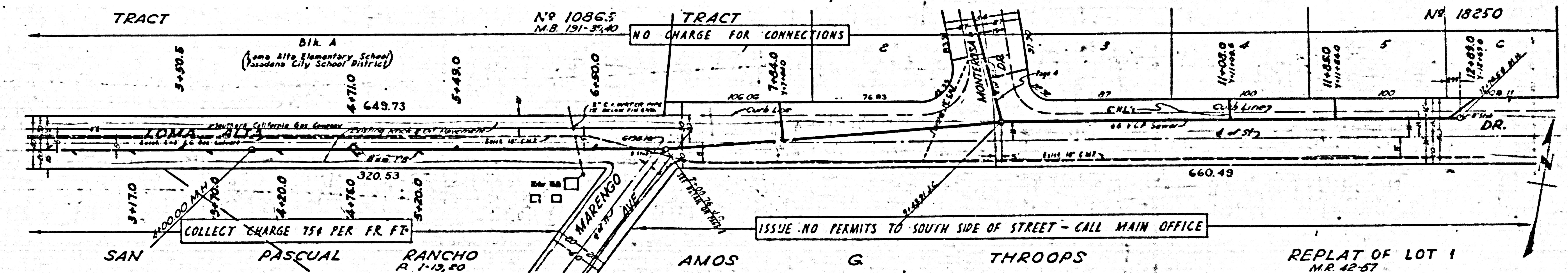
COLLECT CHARGES AS INDICATED

22,422



PC. 3726  
PAGE 2  
DOUBLE SCALE

COLLECT CHARGES AS INDICATED



CHO

REPLAT OF LOT 1  
M.R. 42-57



PC 3726  
PAGE 4  
DOUBLE SCALE  
1780

NO CHARGE FOR CONNECTIONS

Surface and Sewer

1770

1760

22,423

(B)

1800

1790

1780

1770

1760

EXTRA STRENGTH PIPE  
IN MAIN LINE

EXTRA STRENGTH PIPE IN MAIN LINE AND HOUSE LATERALS

(B)

1810

1800

1790

1780

1770

(A)

1770

1760

1750

1740

1730

(A)

1770

1760

1750

1740

1730

PC 3726  
PAGE 3  
DOUBLE SCALE  
COLLECT CHARGES  
AS INDICATED

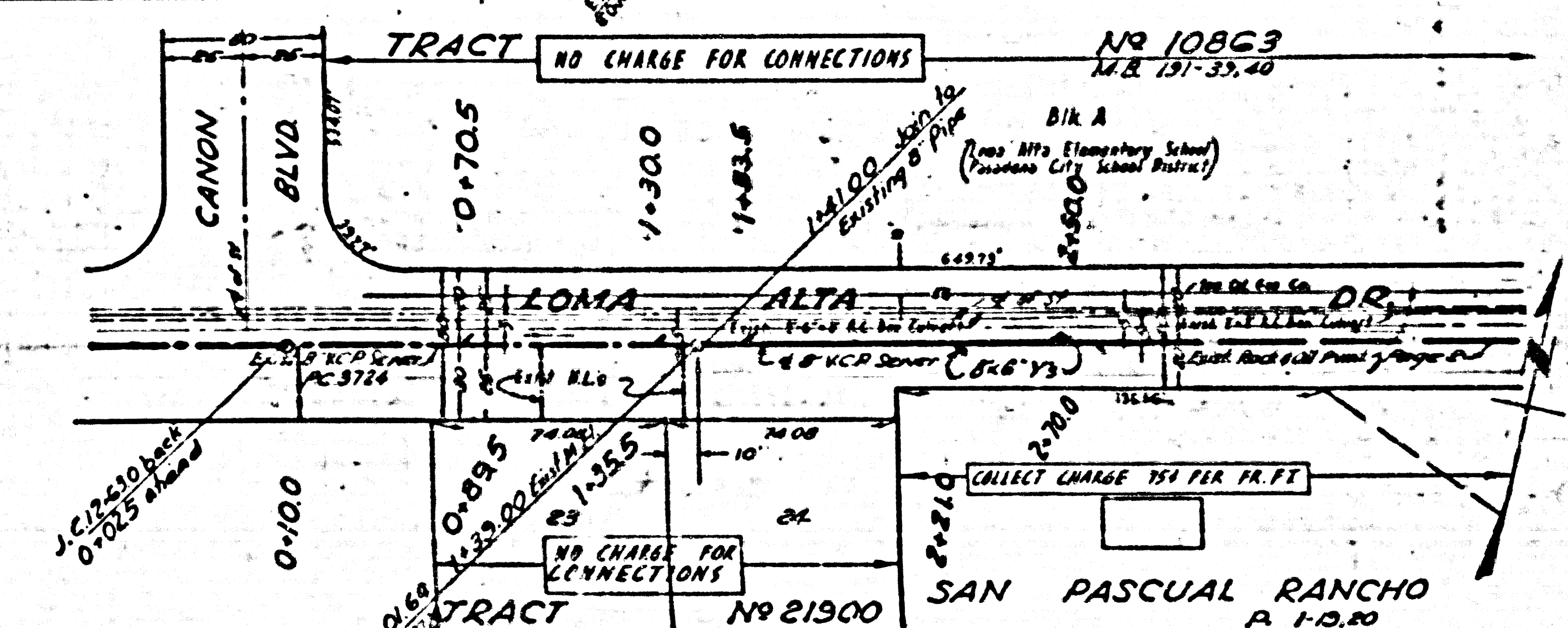
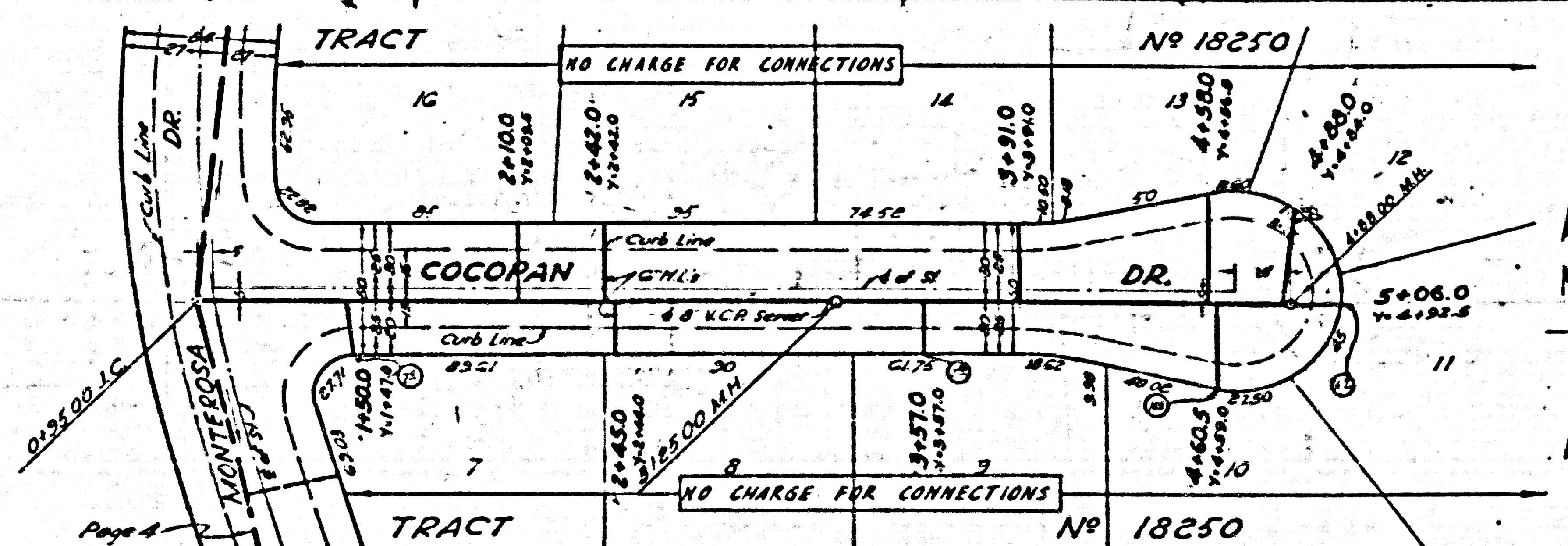
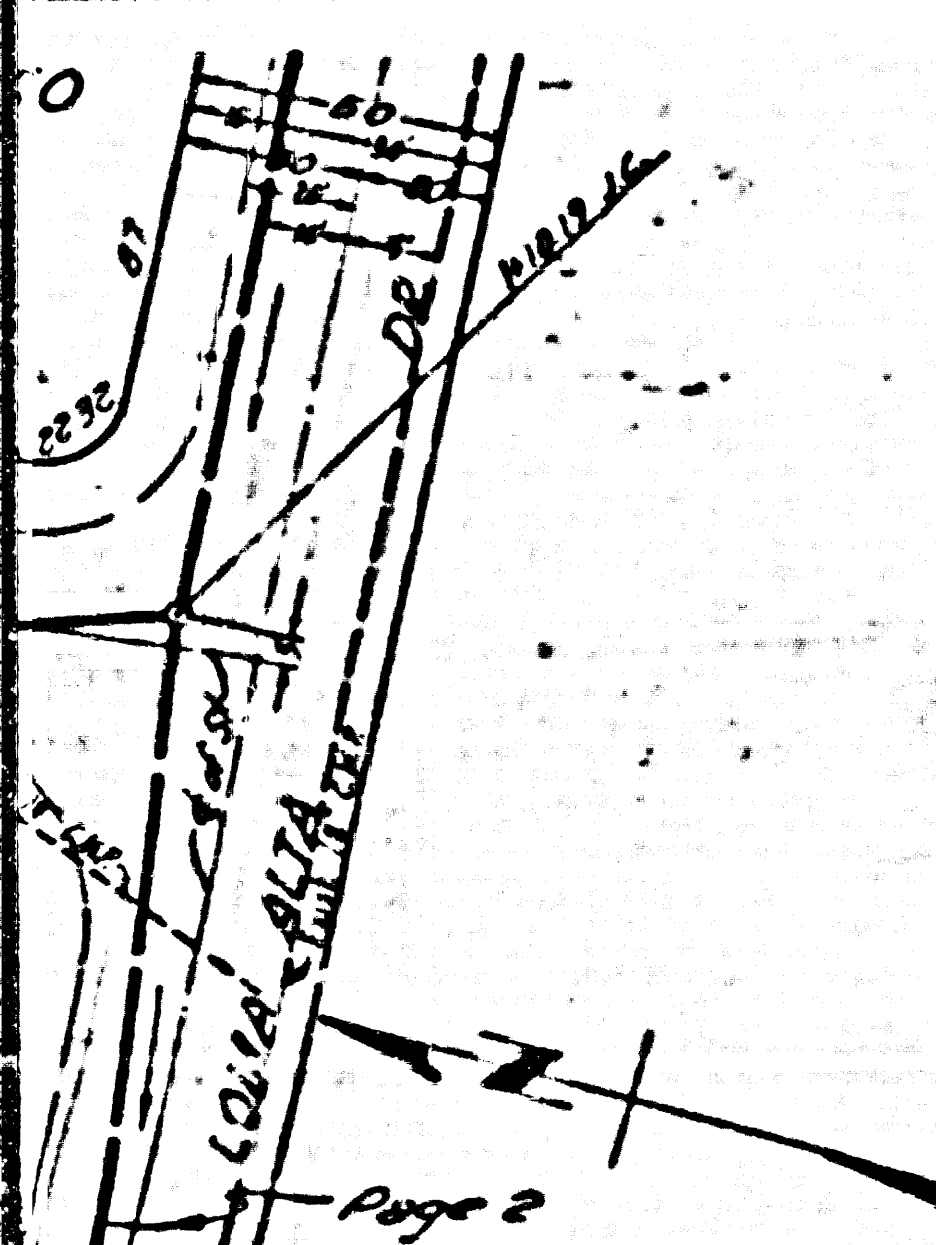
NO CHARGE FOR CONNECTIONS

Surface and Sewer

1770

1760

22,422

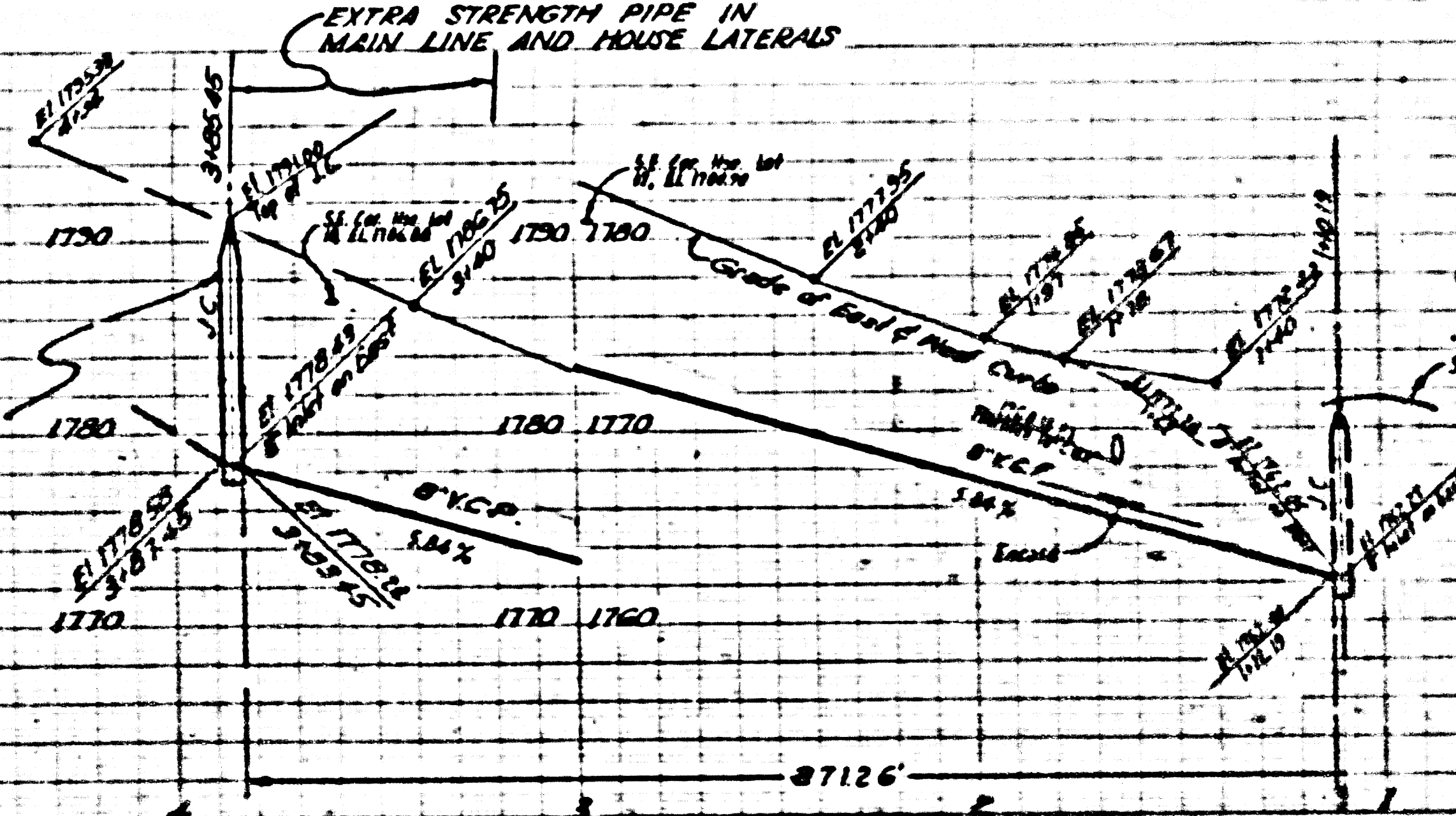
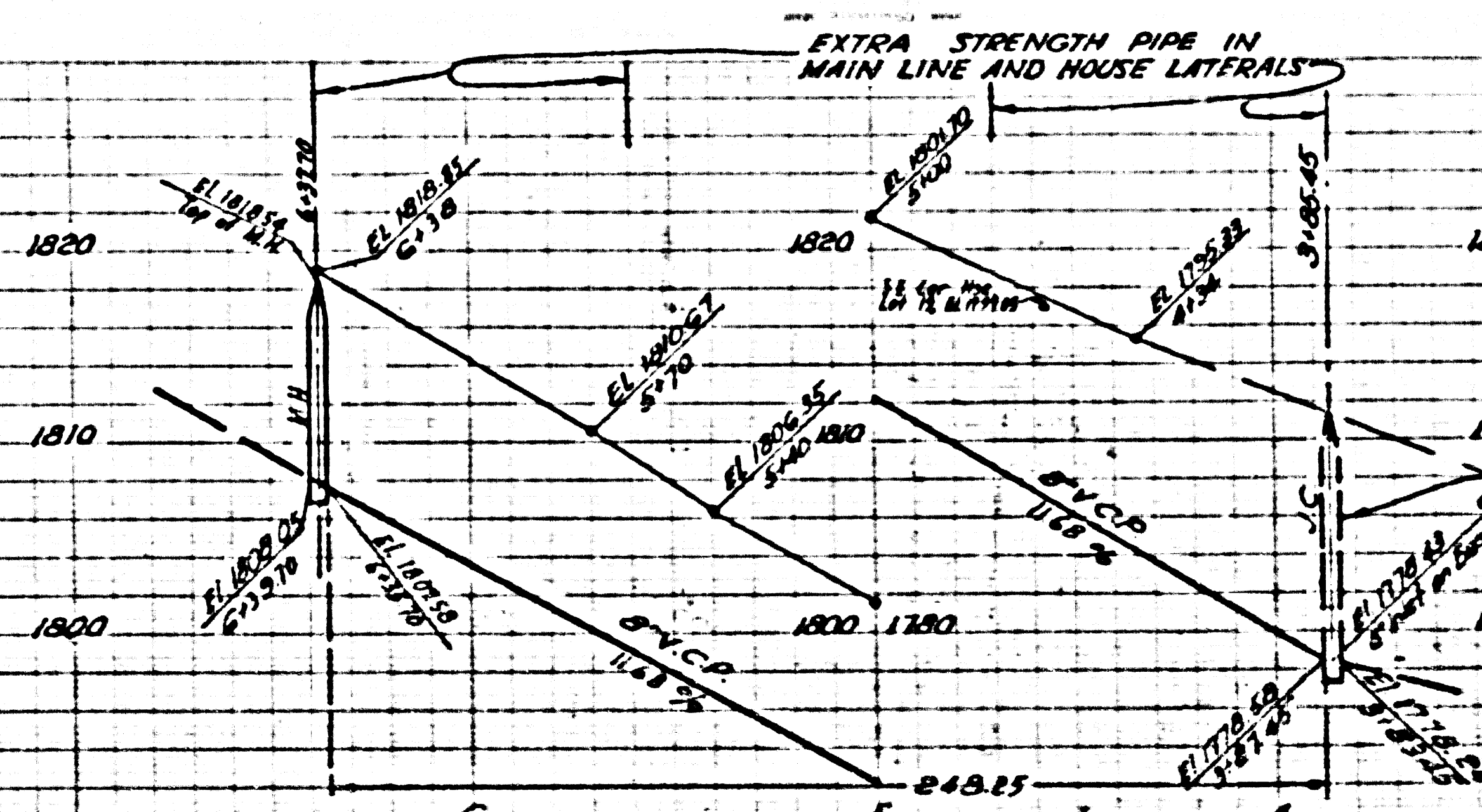




P.C. 3726  
PAGE 5  
DOUBLE SCALE

NO CHARGE FOR CONNECTIONS

22,424

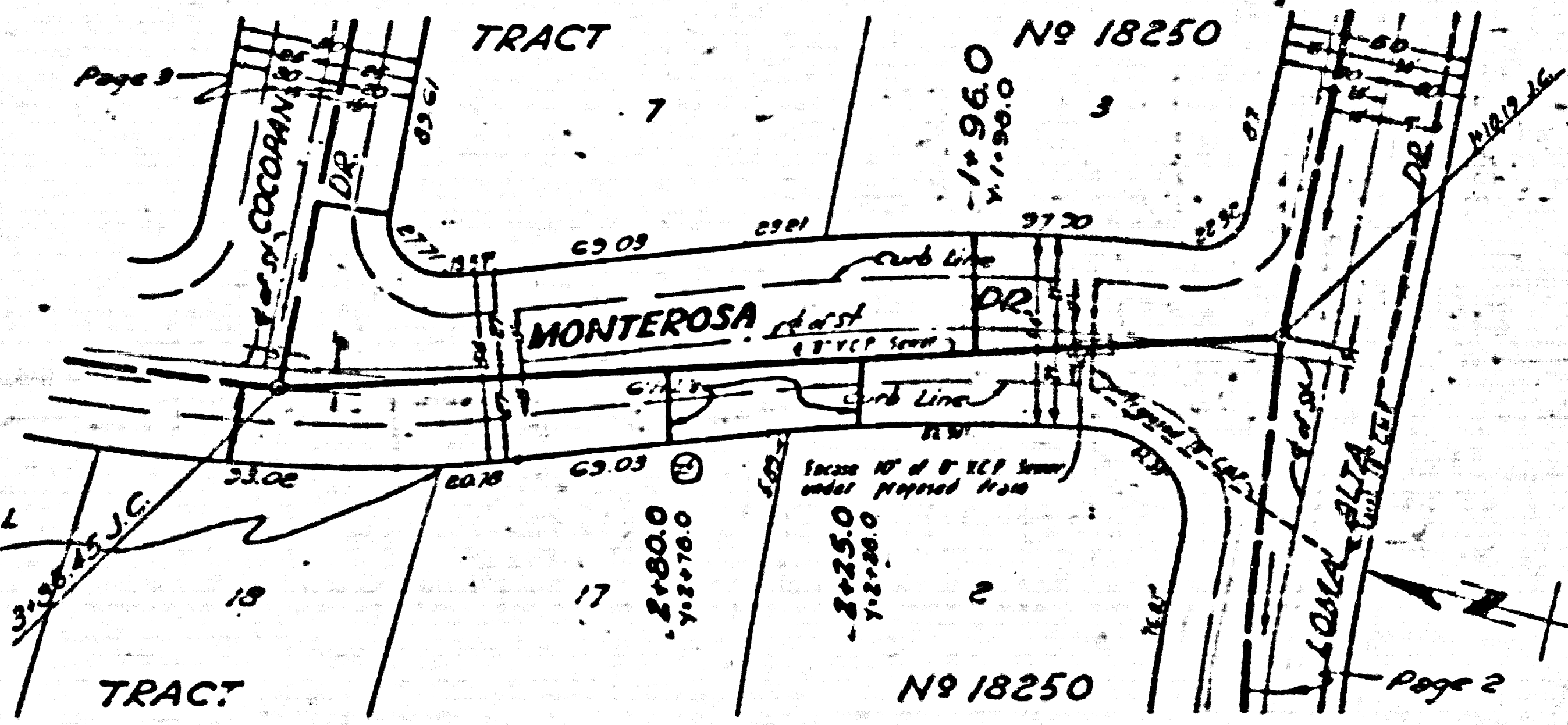
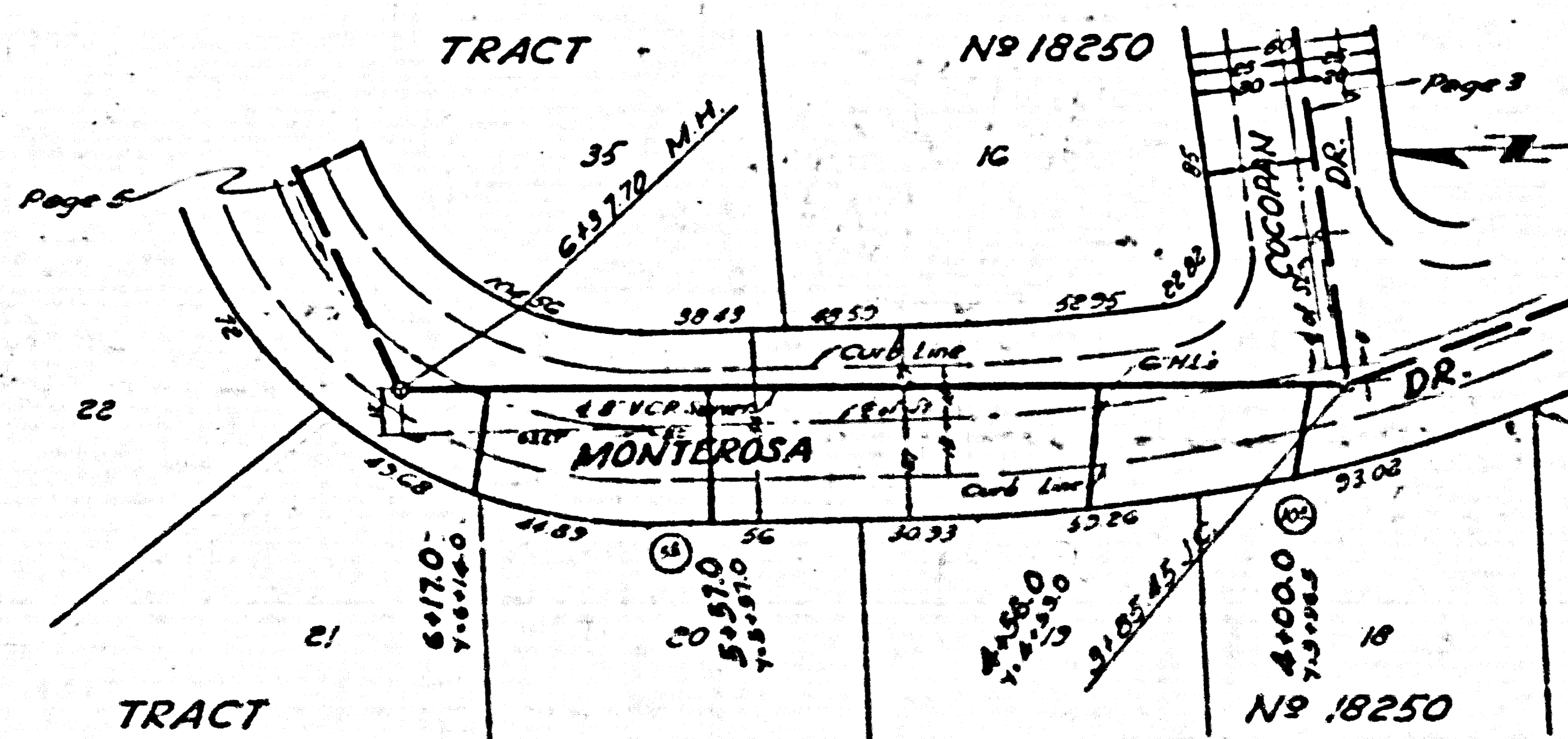
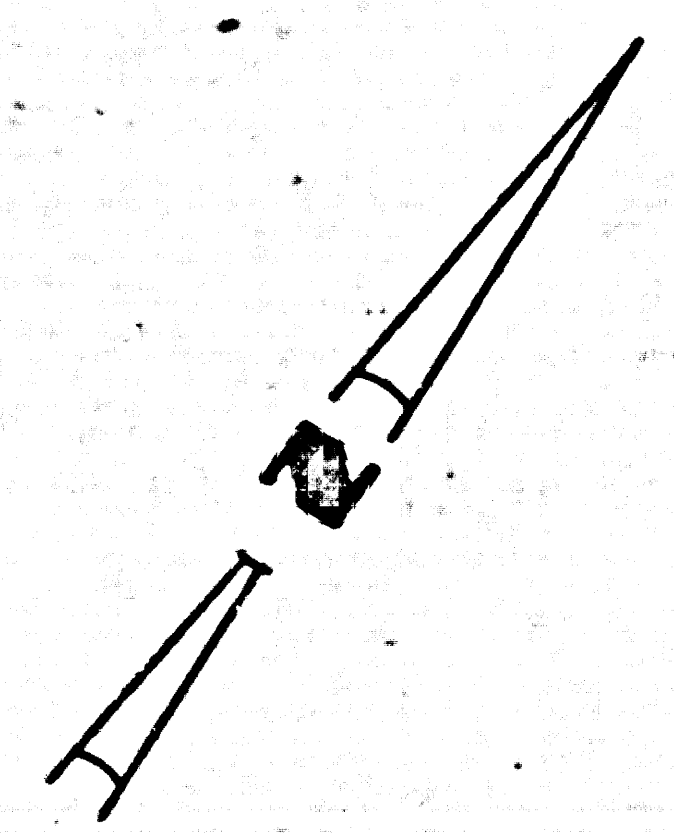


P.C. 3726  
PAGE 4  
DOUBLE SCALE

NO CHARGE FOR CONNECTIONS

22,423

8250  
29



22



Trim Line

Extra Strength Pipe in Main line and House Laterals

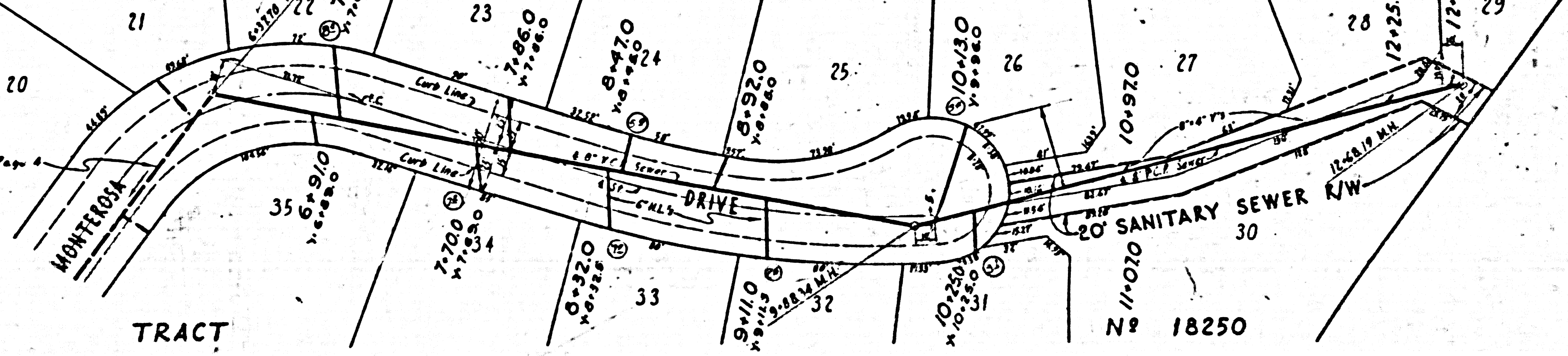
P.C. 37  
PAGE  
DOUBL  
NO CHAN  
CONNEC

2242

PC 3720

TRACT

TRACT



Trim Line

10