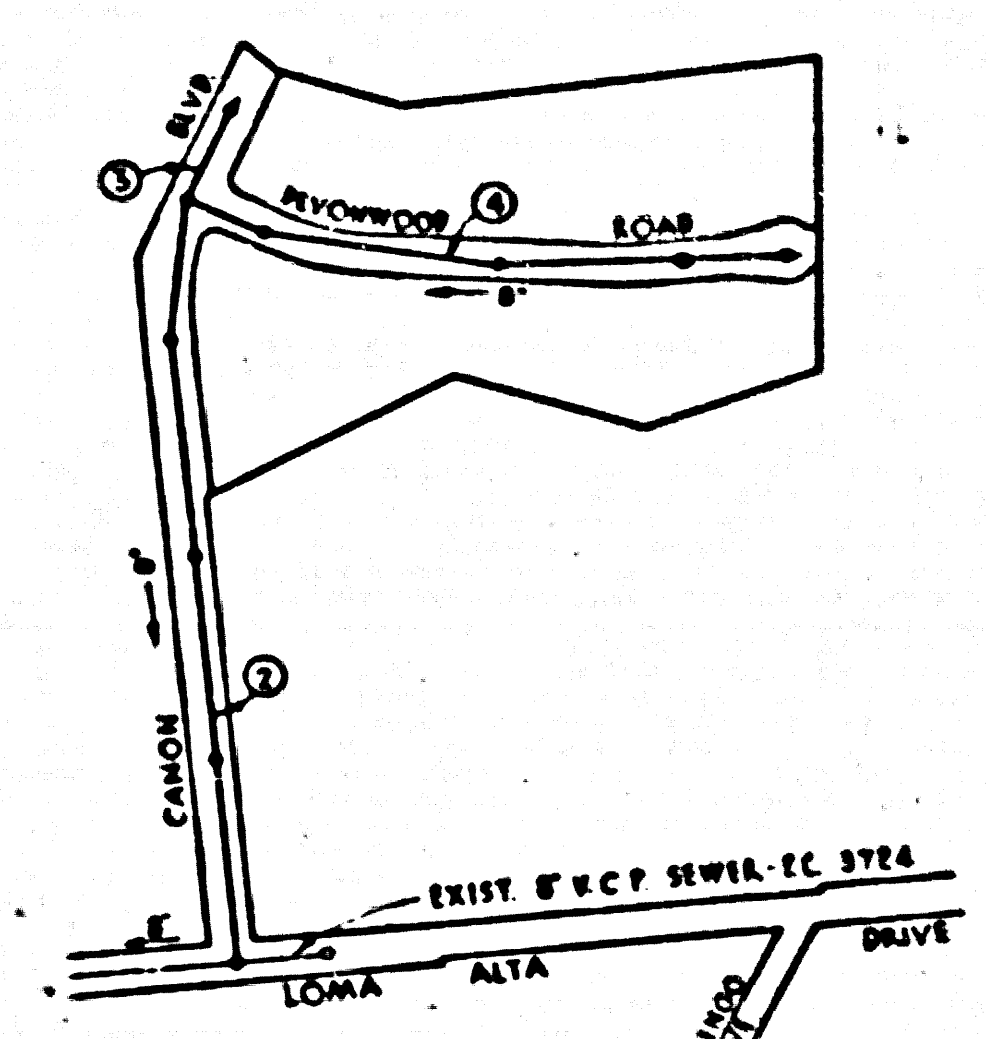


Trim Line

B.M. L.S. 35-72
1.5 FT. IN NORTH END OF CONC. SLAB OF CONCRETE & STONE
BENCH 50' EAST OF THE E. OF NORTH LAKE AVENUE PRODUCED
8' 10" NORTH OF THE E. OF EAST LOMA ALTA DRIVE PRODUCED



INDEX MAP
P.C. 3727
SCALE: 1" = 500'

Revised 3-7-56 *W. H. ...*

Trim Line

ALTADENA BUILDING DISTRICT NO 3 DOUBLE SCALE

- NOTE:**
Provide stakes on the property lines or property lines produced at right angles to the sewer line at the center line of each manhole.
- No representative of the County Engineer will survey or layout any portion of the work.
- The owner or his authorized representative shall furnish the County Engineer with grade sheets and stations for all house laterals and Y branches and shall provide stakes for them at their proper locations with stationing plainly marked. Any change in location shall be requested in writing by the owner or his representative.
- No revisions shall be made in these plans without the approval of the County Engineer.
1. Use standard manhole frames and covers, S-a-117.
 2. Use standard strength pipe except as noted.
 3. Use cement mortar for all vitrified clay pipe joints.
 4. Resurface all trench within paved area to meet L.A. County Road Dept. or California State Highway Dept. measurements in accordance with permit.
 5. Excise four feet of sewer at points of interference with poles, S-a-119.
 6. House laterals to be constructed with inverts at property line _____ 6" _____ feet below curb grade except as noted.
 7. All structures shall be brick sewer structures, S-a-104.
 8. For allowable leakage test, use Formula No. _____, Spec's., Sec. 51.
 9. Manhole tops in unimproved Rights-Of-Way to be 6" above finish grade.

SHEET	PAGES
1	1-4

FIGURES IN CIRCLES INDICATE PAGE NOS.

CONNECTION CHARGES
AS INDICATED
L. Carter 1-12-56

Sheet Location revised on Page 4 Date: *3-7-56*
Revisions Approved: *R. K. ...*
Office of County Engineer - Reg. C. S. No. 7860

PROFILE, ALIGNMENT AND GRADE OF
SANITARY SEWERS
TO BE CONSTRUCTED IN

TRACT NO 21076

PRIVATE CONTRACT NO. 3727
W. S. 50
1 SHEET

Scale: VERT. 1" = 5'
HORIZ. 1" = 50' September 1955
PREPARED IN THE OFFICES OF
LEONARD M. GOWDY

Leonard M. Gowdy
Reg. C. S. No. 5573
FOR LEGEND SEE PLAN NO. S-a-64

NOTE:
Grades to which this improvement is to be constructed are shown on plans and profiles. Grade points for top of curbs, corner line of driveway, or center line of alleys are shown by circles on profiles. At all points between designated points the grade shall be established so as to conform to a straight line drawn between said designated points.

Elevations are in feet above U.S.C.A.G.S. sea level datum of 1929.

This drawing and the data hereon are hereby made a part of the specifications.

Work shall be constructed according to specifications on file in the office of the County Engineer and shall be prosecuted only in the presence of the County Engineer.

Before work can be started, the contractor must obtain a permit to occupy in County Streets from L.A. County Road Dept. 108 W. 9th St. and make a deposit with the County Engineer, form 56, Per-American bids, 50% in advance, sufficient to cover cost of construction inspections and record plans.

Approval of this plan by the County of Los Angeles does not constitute a representation as to the accuracy of the location of or the existence or non-existence of any underground utility, pipe, or structure within the limits of this project. This note applies to all sheets.

If work is to be done on a State Highway, a permit must be obtained from the State of California, Division of Highways, 120 South Spring Street.

COUNTY OF LOS ANGELES, CALIFORNIA

Approved, John A. Lamb, County Engineer
Approved, A. M. Rawn
Chief Clerk of the Dist. No. 11
A. P. ...
Checked by: *R. K. ...* 1-12-56
Office of County Engineer, Reg. C. S. No. 7860

Trim Line

PC 3727
PAGE 1
DOUBLE SCALE

22,261

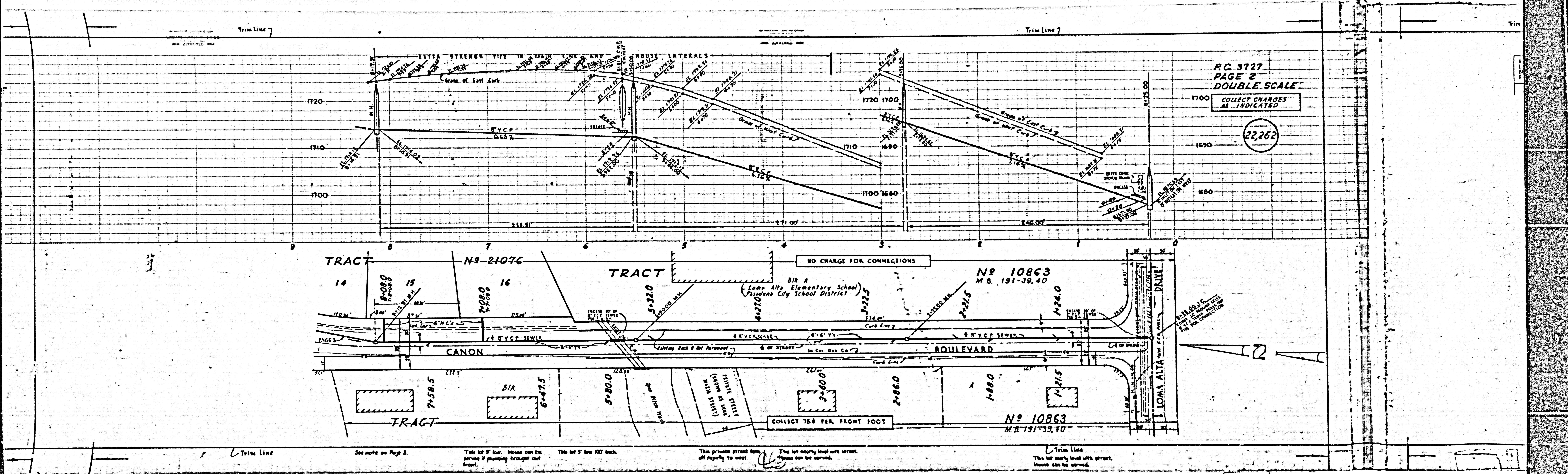
(4)

TRACT NO 21076

PC 3727
15550-01

RL

Trim Line



P.C. 3727
 PAGE 2
 DOUBLE SCALE
 COLLECT CHARGES
 AS INDICATED

22,262

See note on Page 3. This lot 9' low. House can be served if plumbing brought out front. This lot 5' low 100' back. The private street lots off rapidly to west. The lot nearly level with street. House can be served. This lot nearly level with street. House can be served.

Trim Line 7

Trim Line 7

3727
E. 4
DOUBLE SCALE

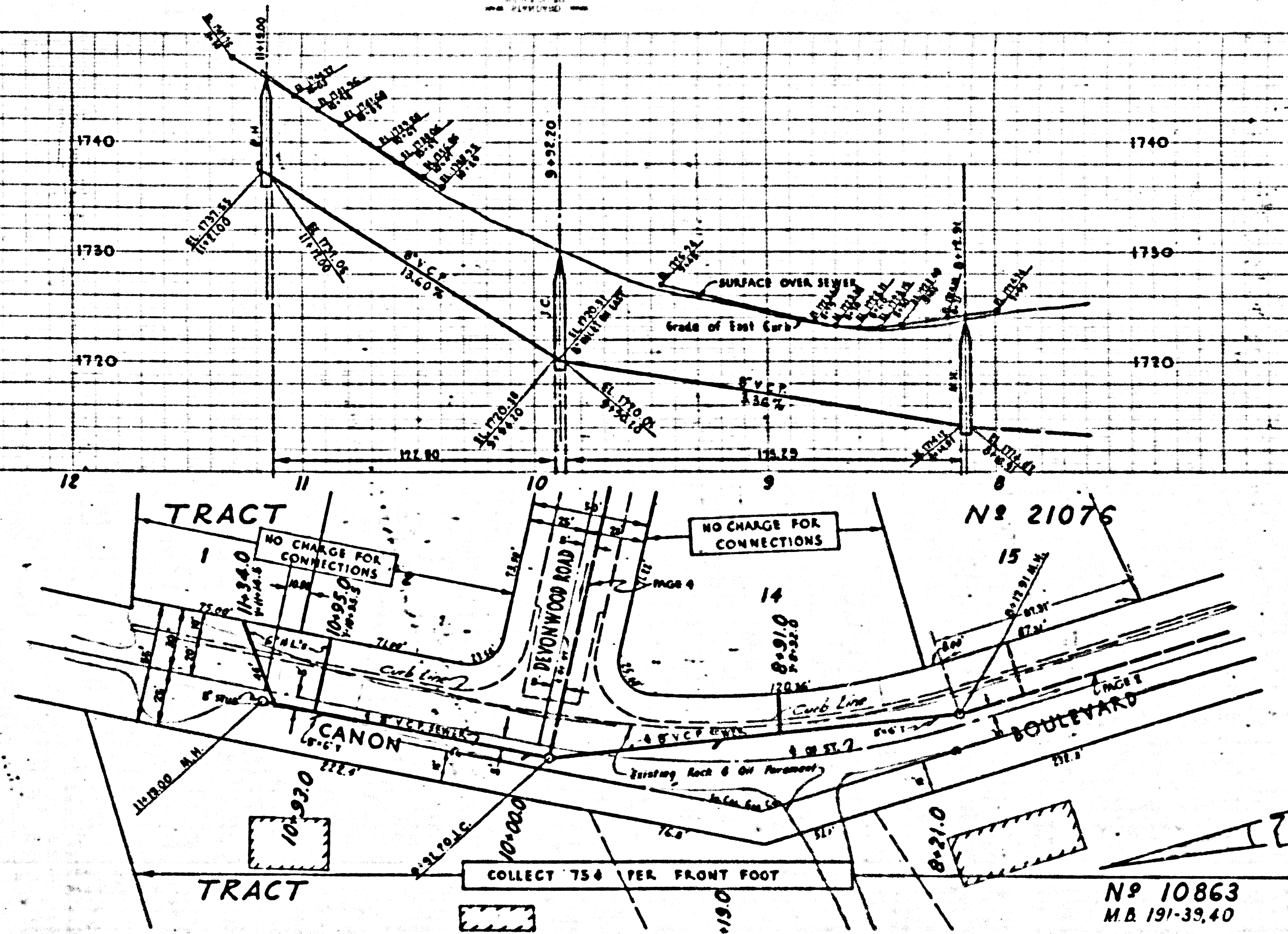
MADE FOR
CONNECTIONS

22,264

RC. 3727
PAGE 3
DOUBLE SCALE

COLLECT CHARGES
AS INDICATED

22,263

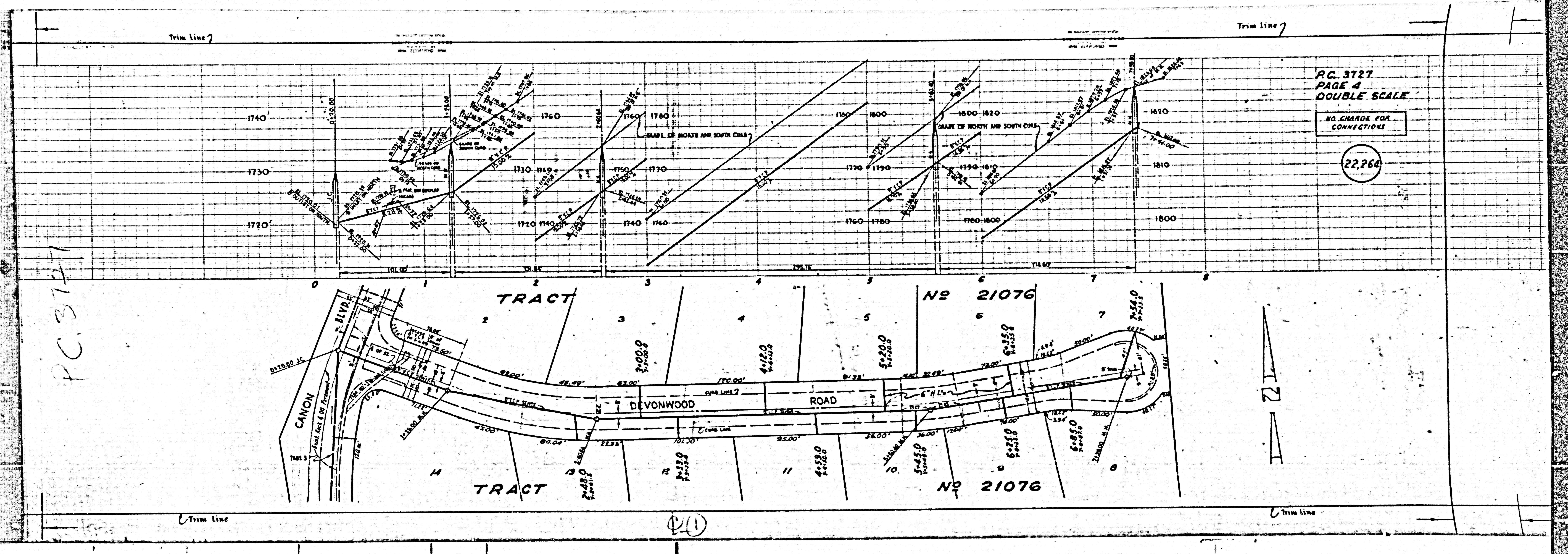


Trim Line

Trim Line

This house higher than street. This house 200' back from street and 8' lower in elev. Bank in front, falls off 12' to 12'.

C.P. in rear - ground 12' to 12' low. Possible to serve by reversing plumbing.



PC 3127
PAGE 4
DOUBLE SCALE

NO CHARGE FOR CONNECTIONS

22,264

PC 3127

20