

Trim Line

INDEX 1 of 2

PALMDALE BLDG, DISTRICT NO 8-P

NOTE:
 Provide stakes on the property lines or property lines produced at right angles to the sewer line at the center line of each manhole.
 No representative of the County Engineer will survey or layout any portion of the work.
 The owner or his authorized representative shall furnish the County Engineer with grade sheets and stations for all house laterals and Y branches and shall provide stakes for them at their proper locations with stationing plainly marked. Any change in location shall be requested in writing by the owner or his representative.
 No revisions shall be made in these plans without the approval of the County Engineer.

1. Use standard manhole frames and covers, S-a-117.
2. Use standard strength pipe except as noted.
3. Use cement mortar for all vitrified clay pipe joints.
4. Resurface all trench within paved area to meet L.A. County Road Dept. or California State Highway Dept. requirements in accordance with permit.
5. Encase four feet of sewer at points of interference with poles, S-a-119.
6. House laterals to be constructed with inverts at property line 4.5 feet below curb grade except as noted.
7. All structures shall be brick sewer structures, S-a-104.
8. For allowable leakage test, use Formula No. 1, Spec's., Sec. 51.
9. Bull all pipe joints with 4" of Cement Mortar, that are within 20 feet of any Property Line.

PROFILE, ALIGNMENT AND GRADE OF
SANITARY SEWERS
 TO BE CONSTRUCTED IN

TRACT NO 21310

P.C. 3731
 PAGE 1

24,622
 -B

(6)

TRACT NO 21310

PRIVATE CONTRACT NO. 3731
 W. S. 65
 2 SHEETS

Scale: VERT. 1"=4'
 HORIZ. 1"=40' OCTOBER 1955

PREPARED IN THE OFFICES OF
A.G. ROSENTHAL & ASSOCIATES

Arthur G. Rosenthal
 Reg. C. E. No. 3805

FOR LEGEND SEE PLAN NO. S-a-64

NOTE:

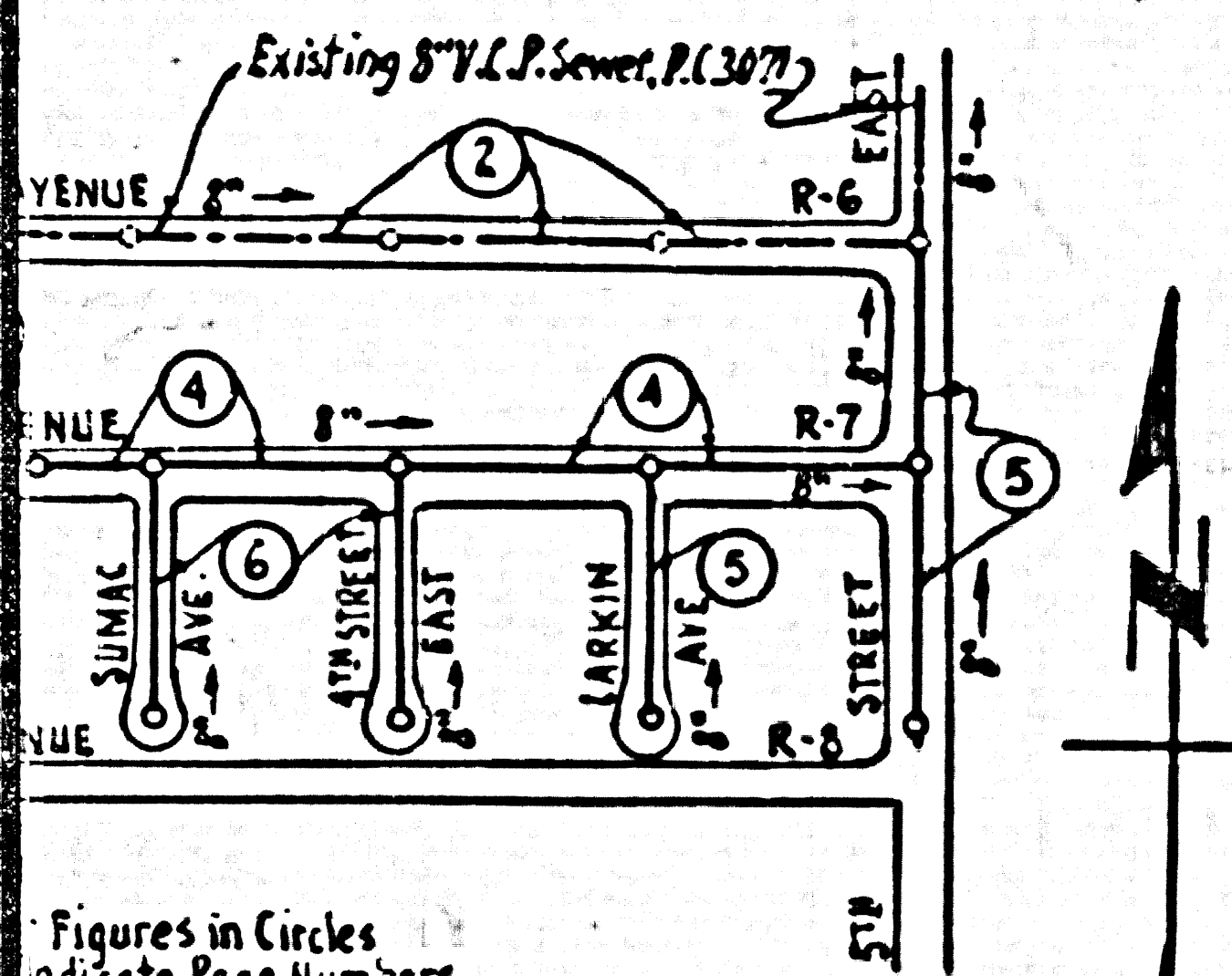
Grades to which this improvement is to be constructed are shown on plans and profiles. Grade points for top of curbs, center line of streets, or center line of alleys are shown by circles on profiles. At all points between designated points the grade shall be established so as to conform to a straight line drawn between said designated points.
 Elevations are in feet above U.S.C. & G.S. sea level datum of 1929.
 This drawing and the data hereon are hereby made a part of the specifications.
 Work shall be constructed according to specifications on file in the office of the County Engineer and shall be prosecuted only in the presence of the County Engineer.
 Before work can be started, the contractor must obtain a permit to excavate in County streets from the L.A. County Road Dept., 108 W. 2nd St. and make a deposit with the County Engineer, Room 311, Pan American Bldg., 253 So. Broadway, sufficient to cover the cost of construction inspection and record plans.
 Approval of this plan by the County of Los Angeles does not constitute a representation as to the accuracy of the location of or the existence or non-existence of any underground utility, pipe, or structure within the limits of this project. This note applies to all sheets.
 If work is to be done in a State Highway, a permit must be obtained from the State of California, Division of Highways, 120 South Spring Street.

COUNTY OF LOS ANGELES, CALIFORNIA

Approved, John A. Lambie, County Engineer
A. P. Collins
 Sanitation Engineer

Approved, A. M. Rawm
 CHIEF ENGR. CO. SAN. DIST. NO. 20
A. M. Rawm
 Office Engineer

Checked by: *P. E. K...* 3-29-56
 Office of County Engineer, Reg. C. E. No. 7860



Figures in Circles
 indicate Page Numbers

SHEET	PAGES
1	1-3
2	4-6

INDEX MAP
 SCALE: 1"=400'
 TRACT NO 21310
 P.C. 3731

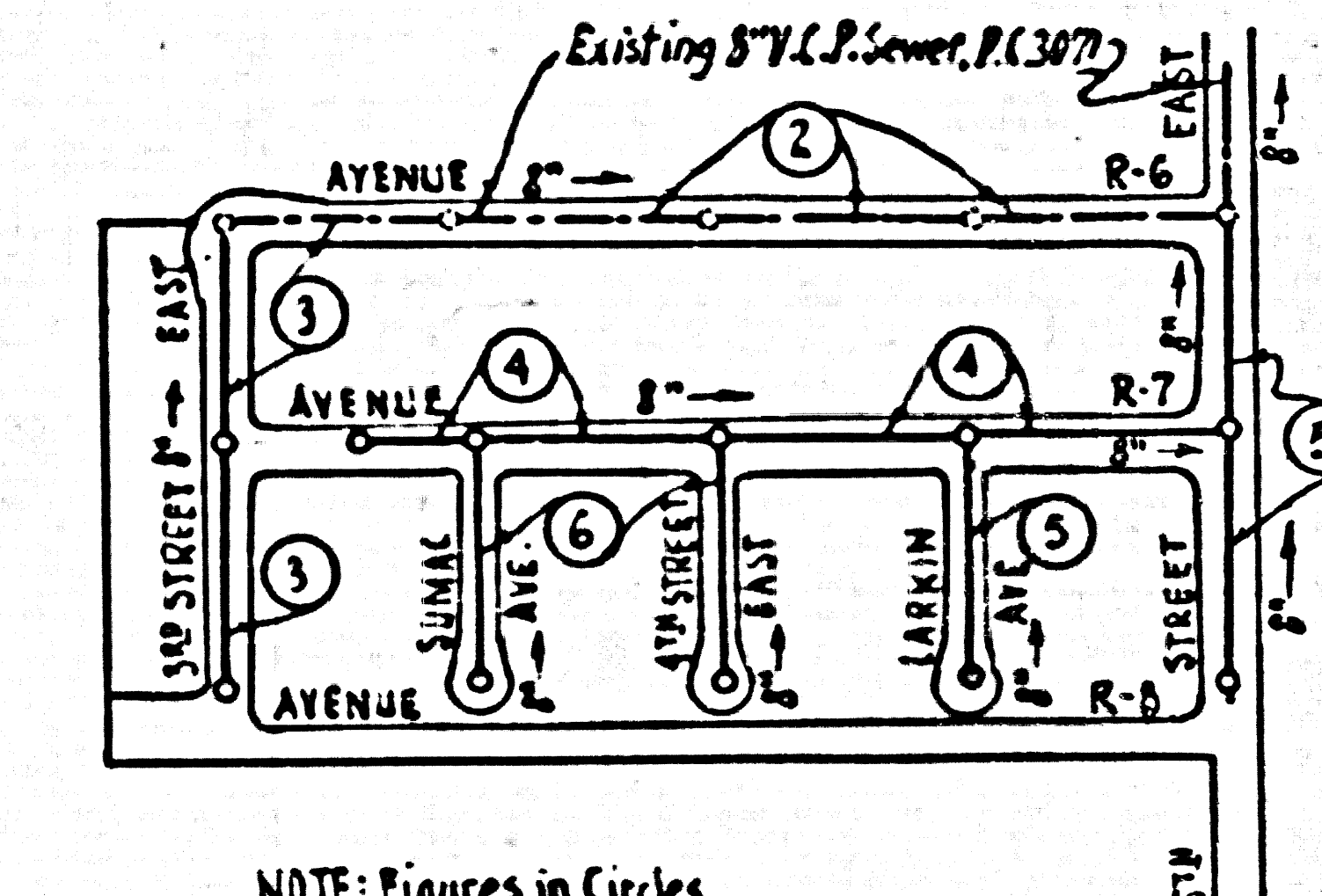
Trim Line

1 P.C. 3731

J. T. W.

INDEX 1 of 2 P.C. 3731 Pg. 2

B.M. AV-47 Elev. = 2670.319
F.B. 1752, Pg. 129
1 1/2" I.P. & Cut spk. in conc. in well, 8" down
at 6TH ST. EAST & AVENUE R @ 4' int.



NOTE: Figures in Circles Indicate Page Numbers

SHEET	PAGES
1	1-3
2	4-6

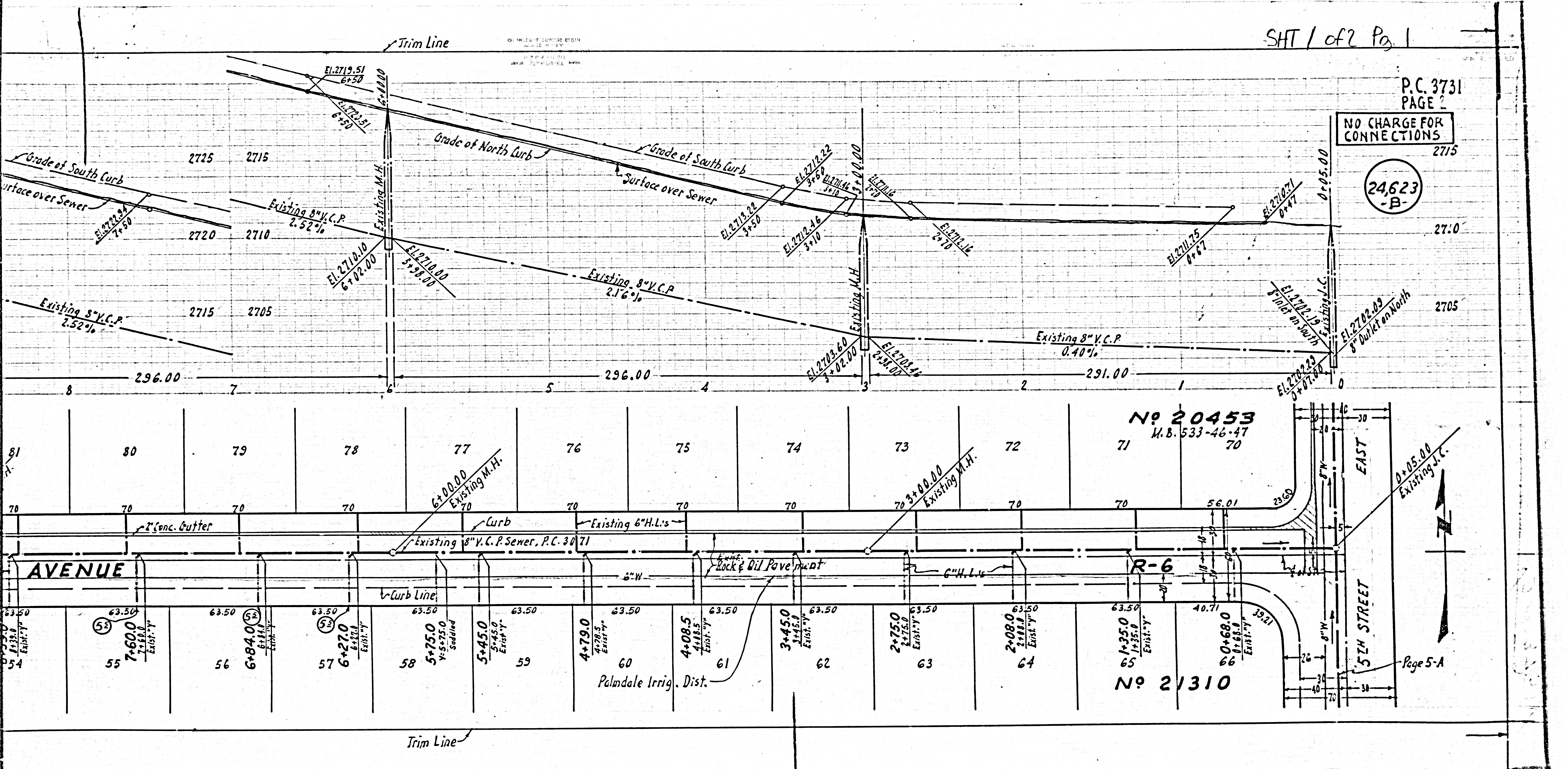
CONNECTION CHARGES
AS INDICATED
SK Duke 2-23-56

INDEX MAP
SCALE: 1" = 400'
TRACT No 21310
P.C. 3731

P.C. 3731
PAGE 2

NO CHARGE FOR CONNECTIONS

24,623
-B-



No 20453
M.B. 533-46-47
70

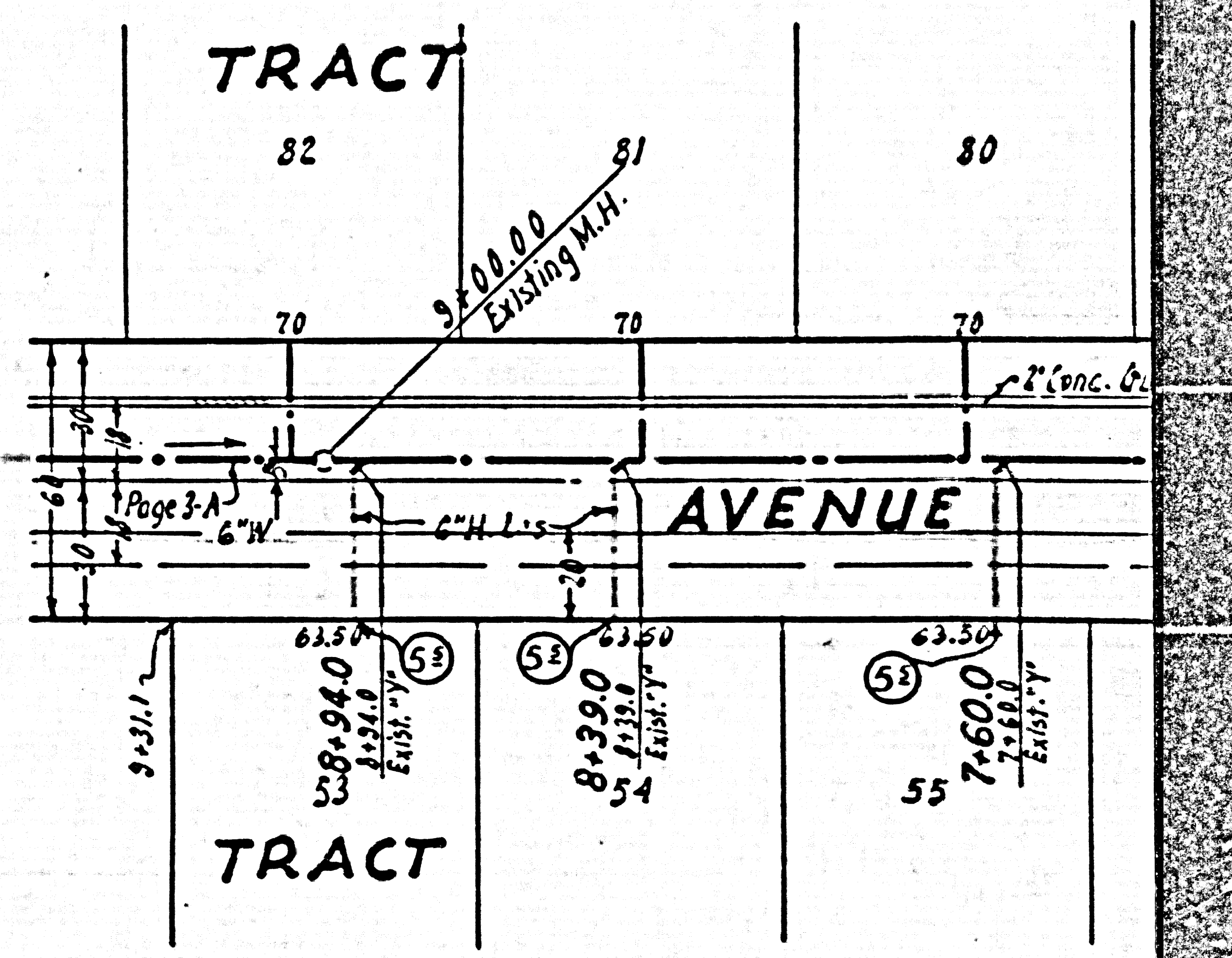
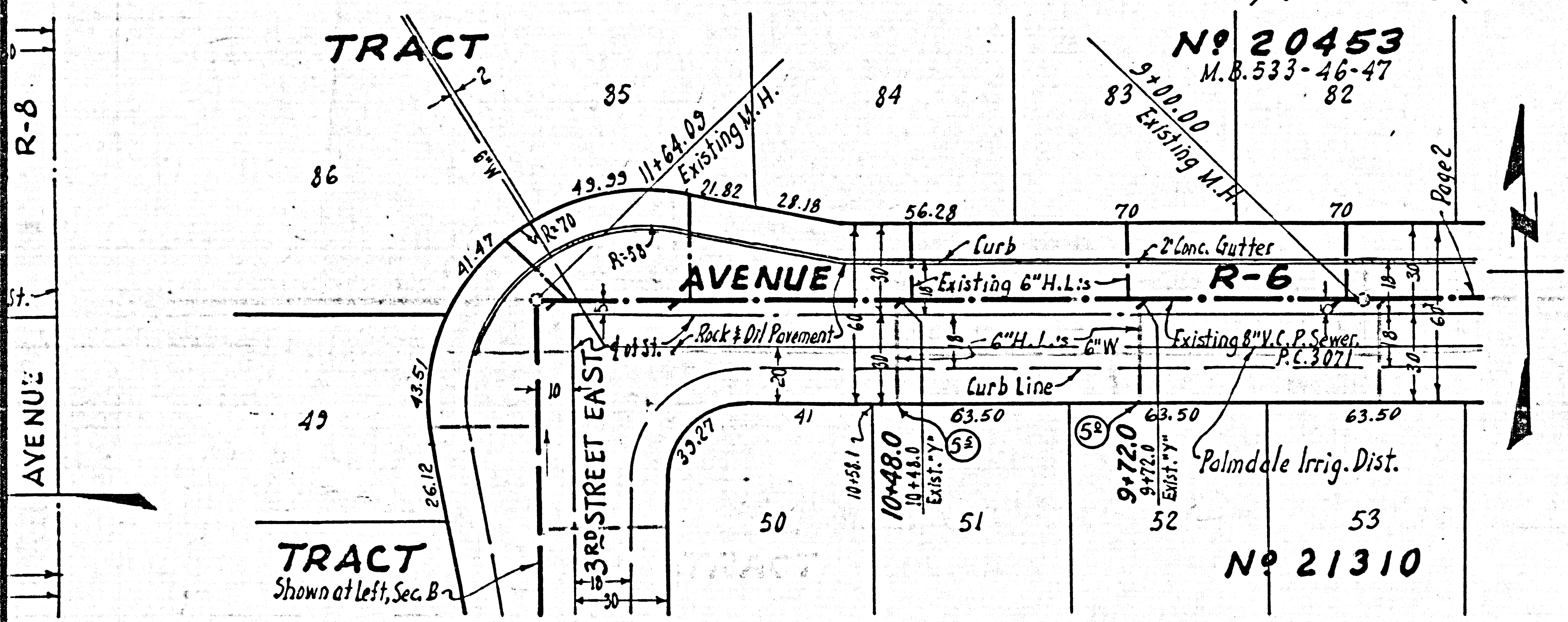
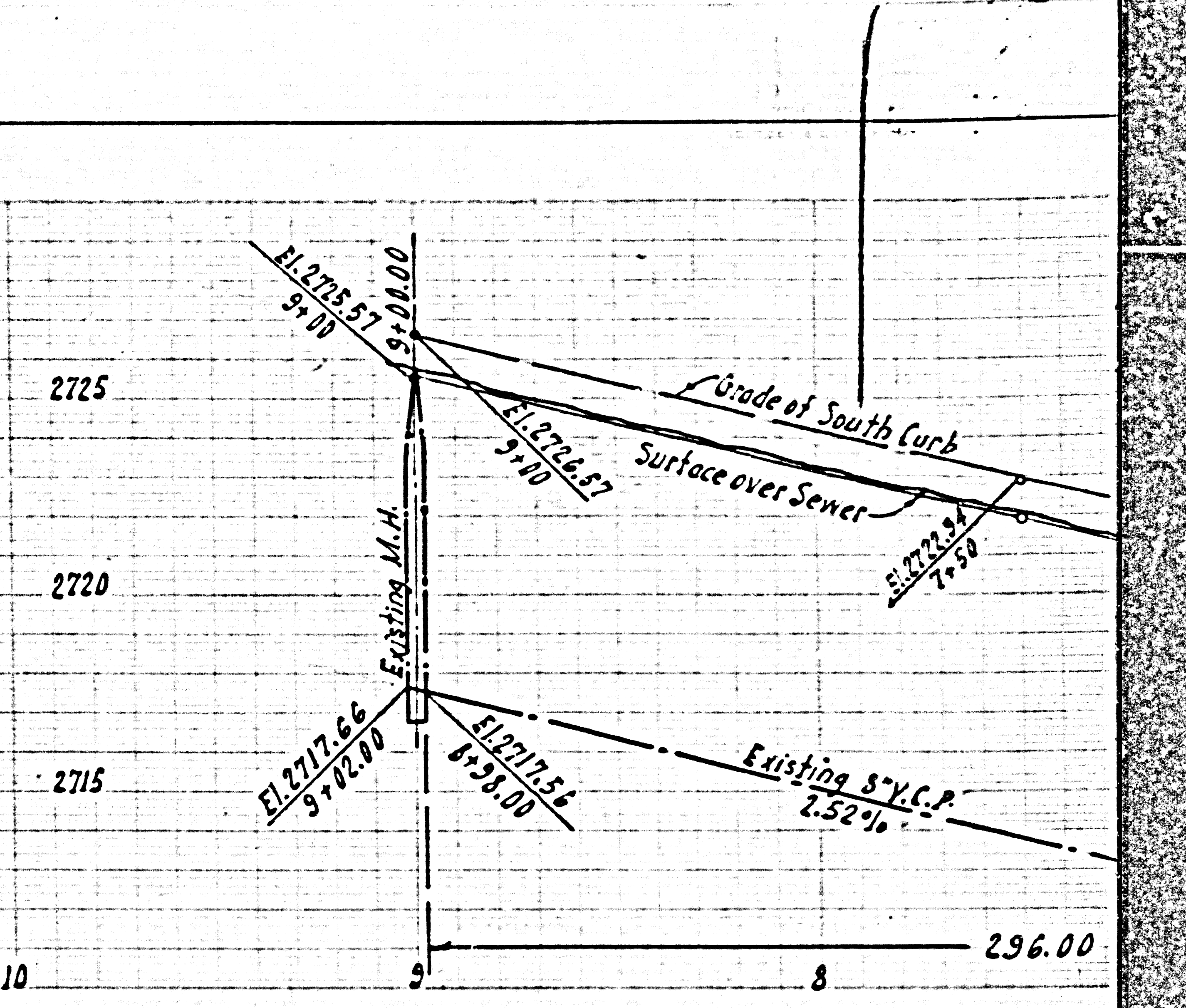
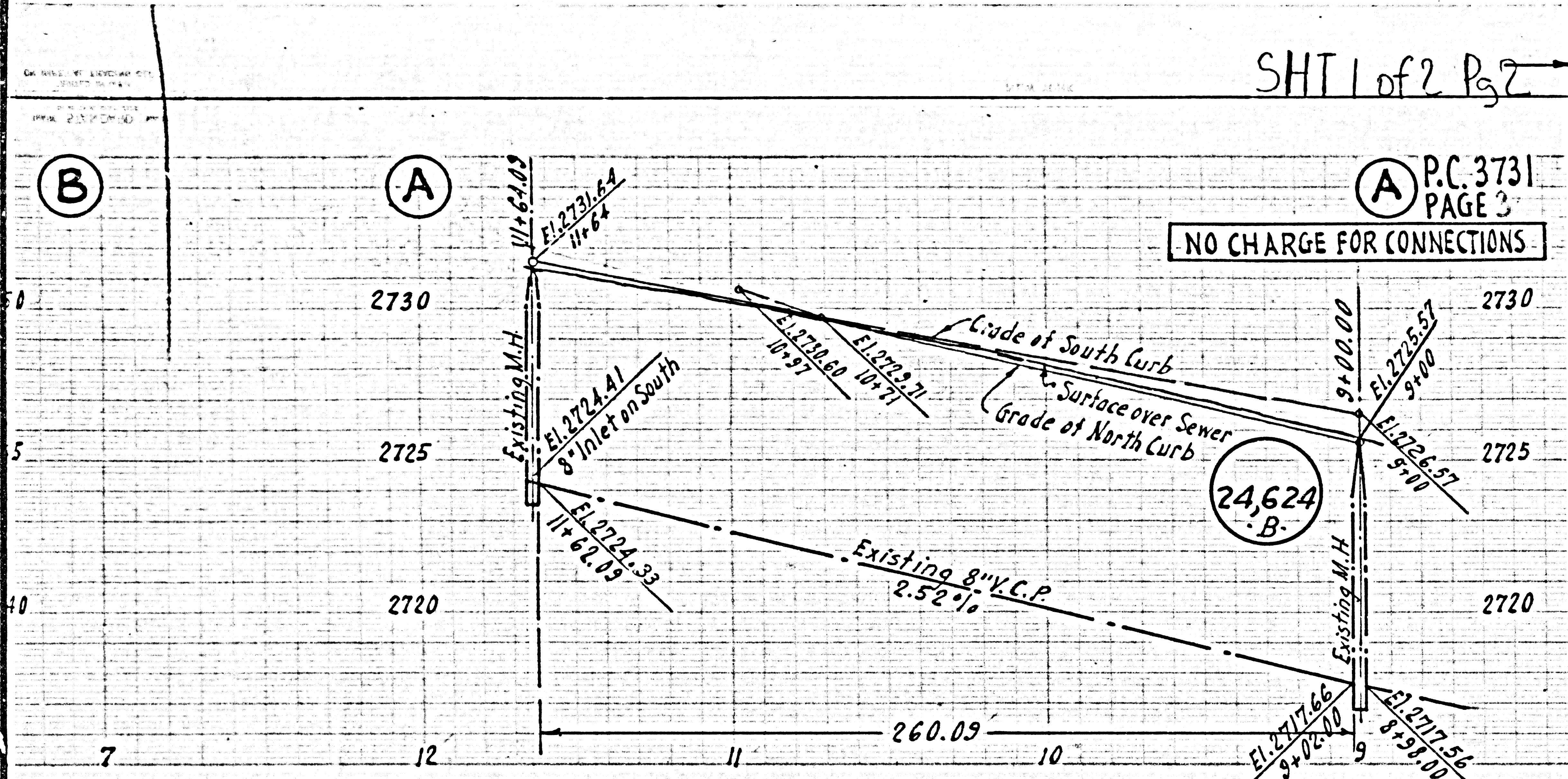
No 21310

Page 5-A

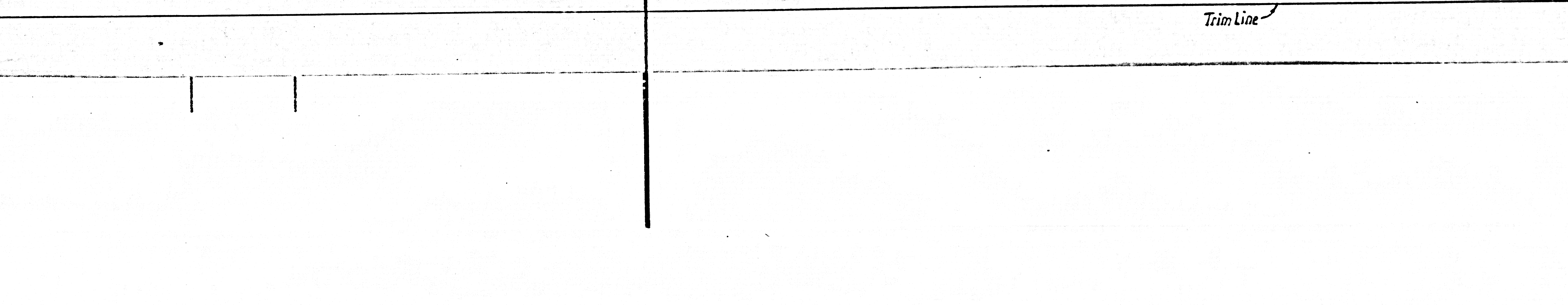
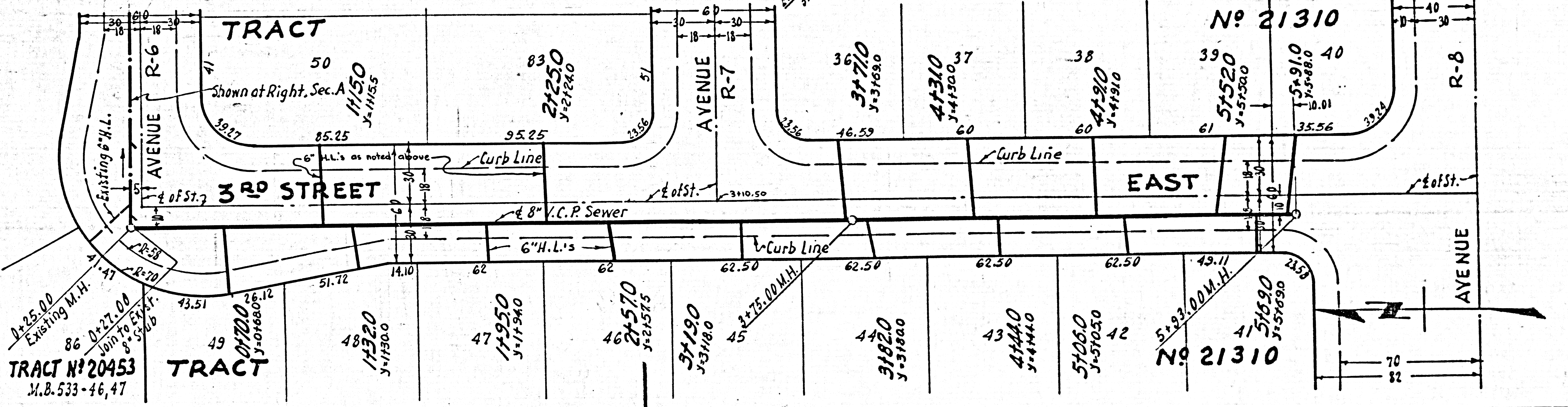
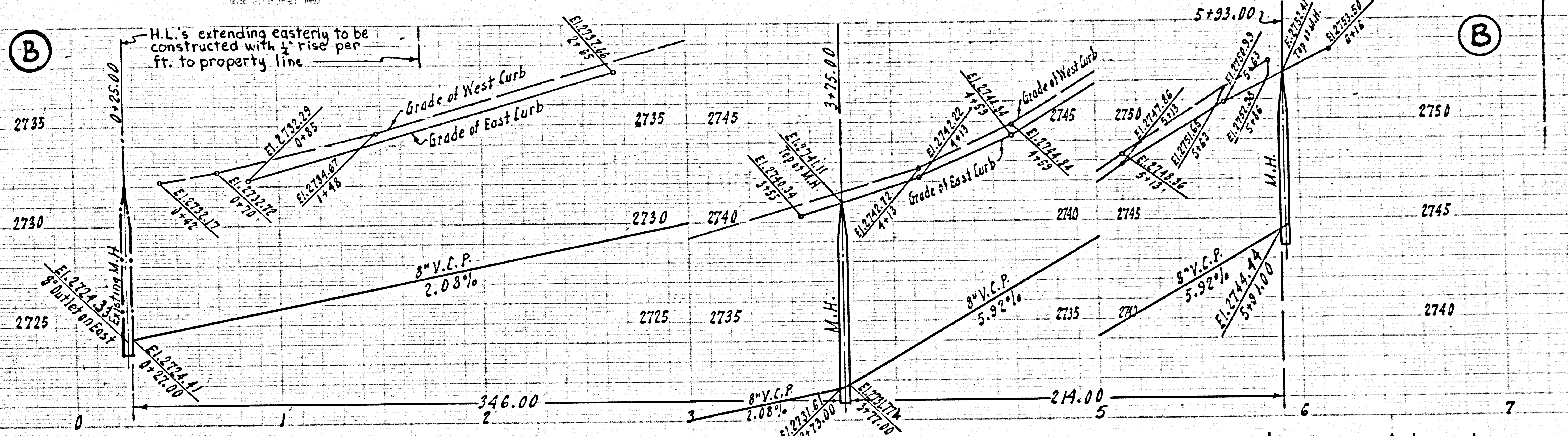
SHT 1 of 2 Pg 2

P.C. 3731
PAGE 3

NO CHARGE FOR CONNECTIONS

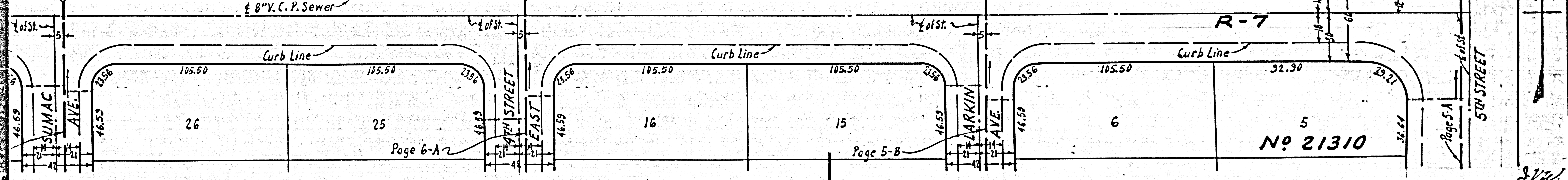
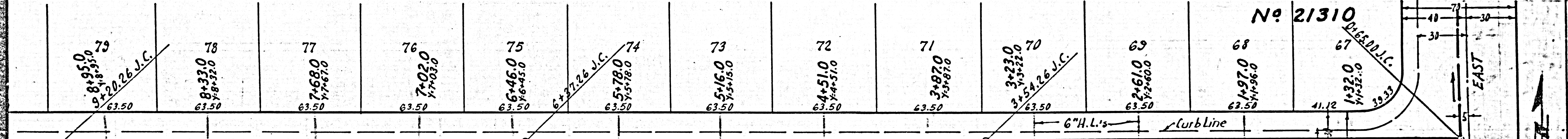
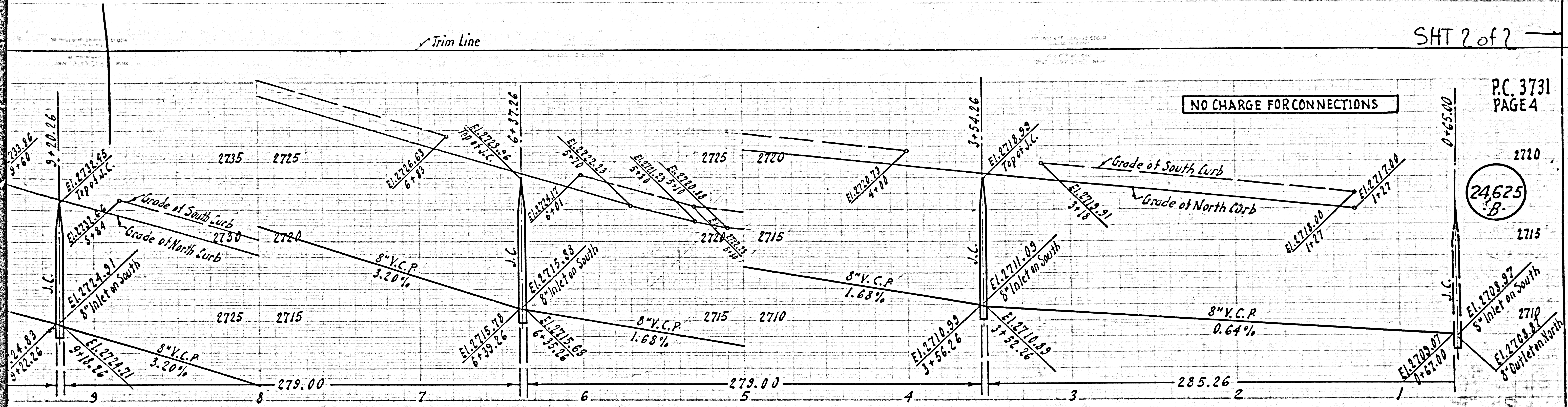


PC. 3731 SHT 1 of 2 Pg 3



NO CHARGE FOR CONNECTIONS

24625
B

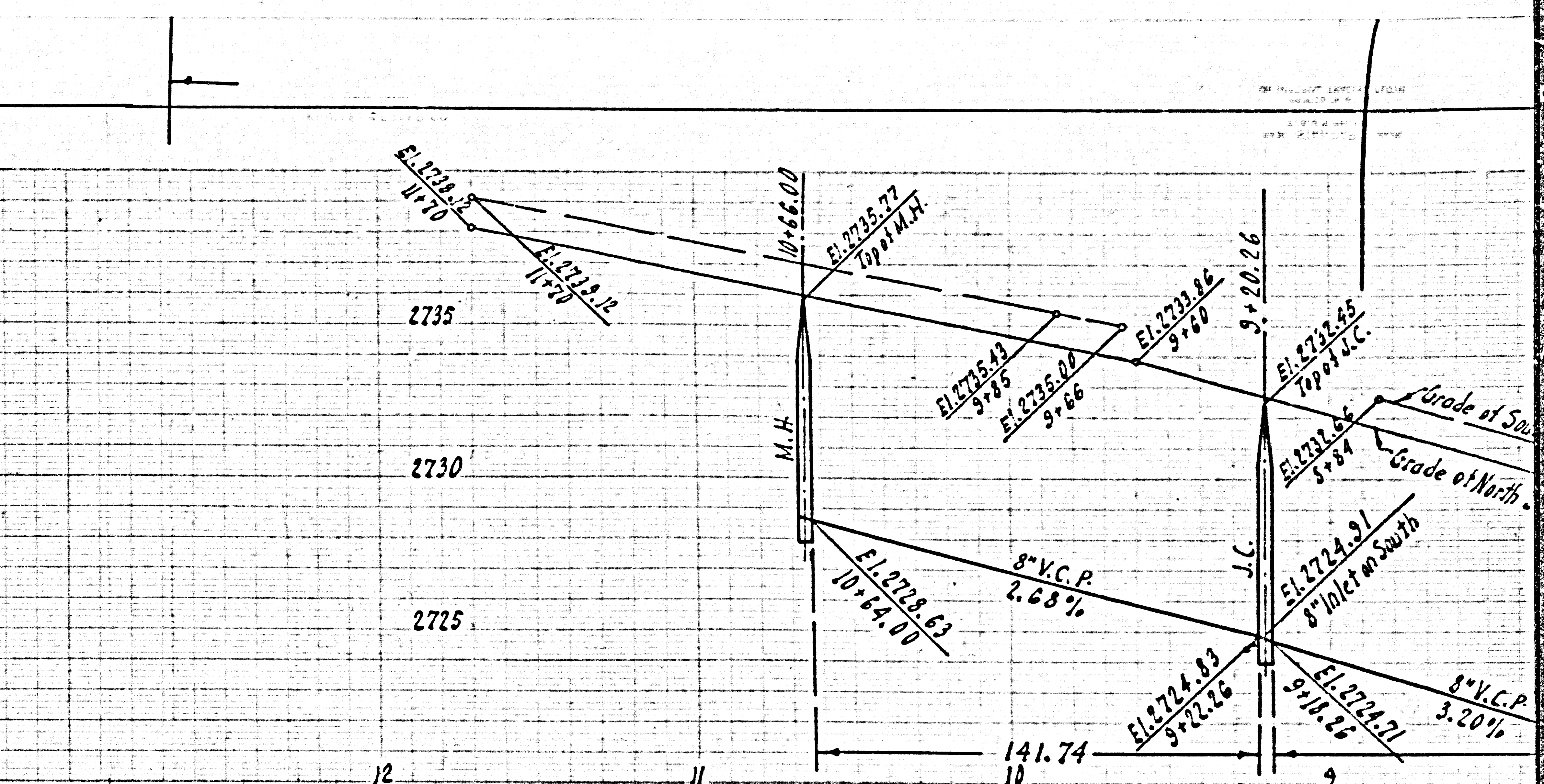
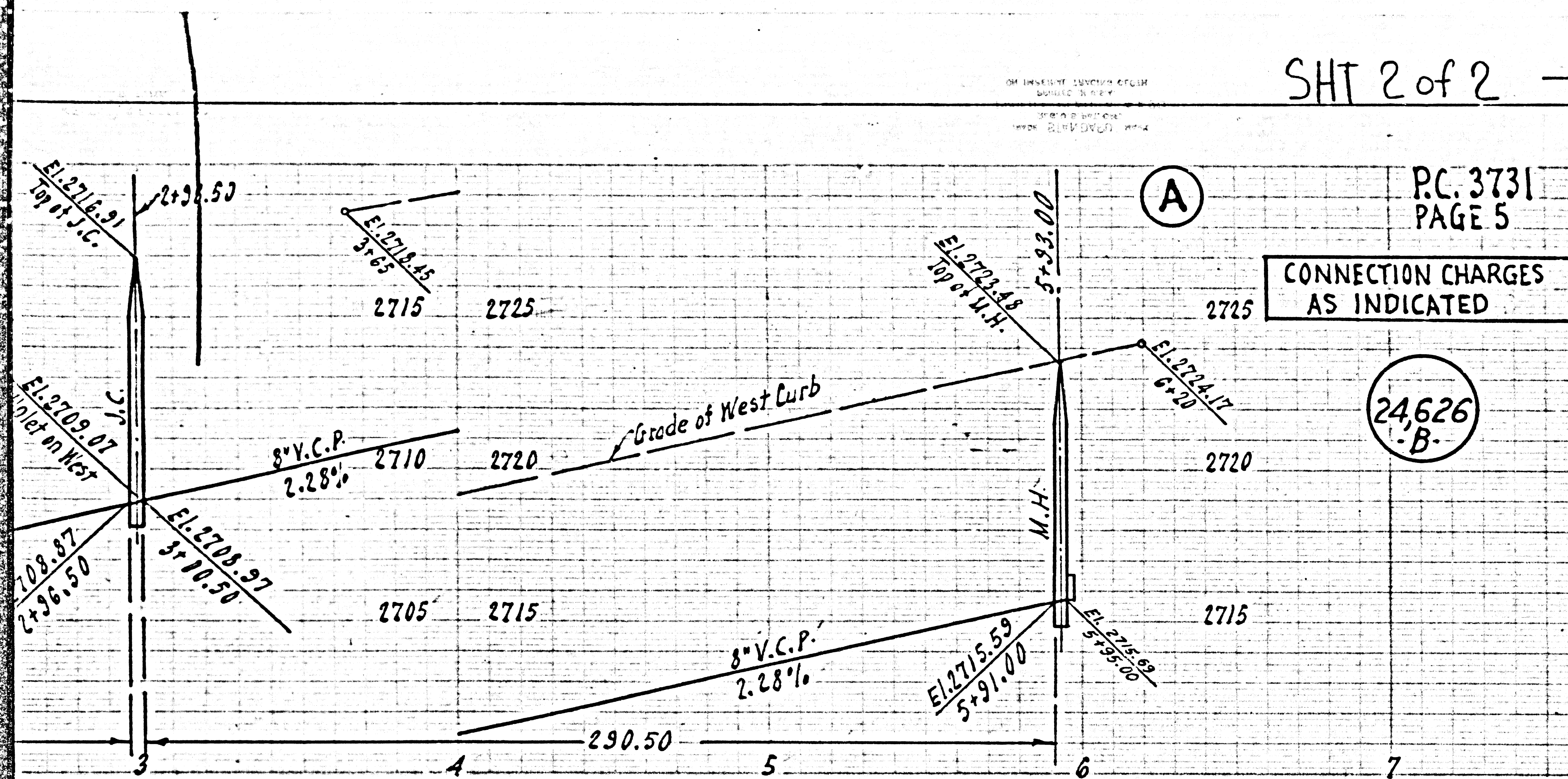


SHT 2 of 2

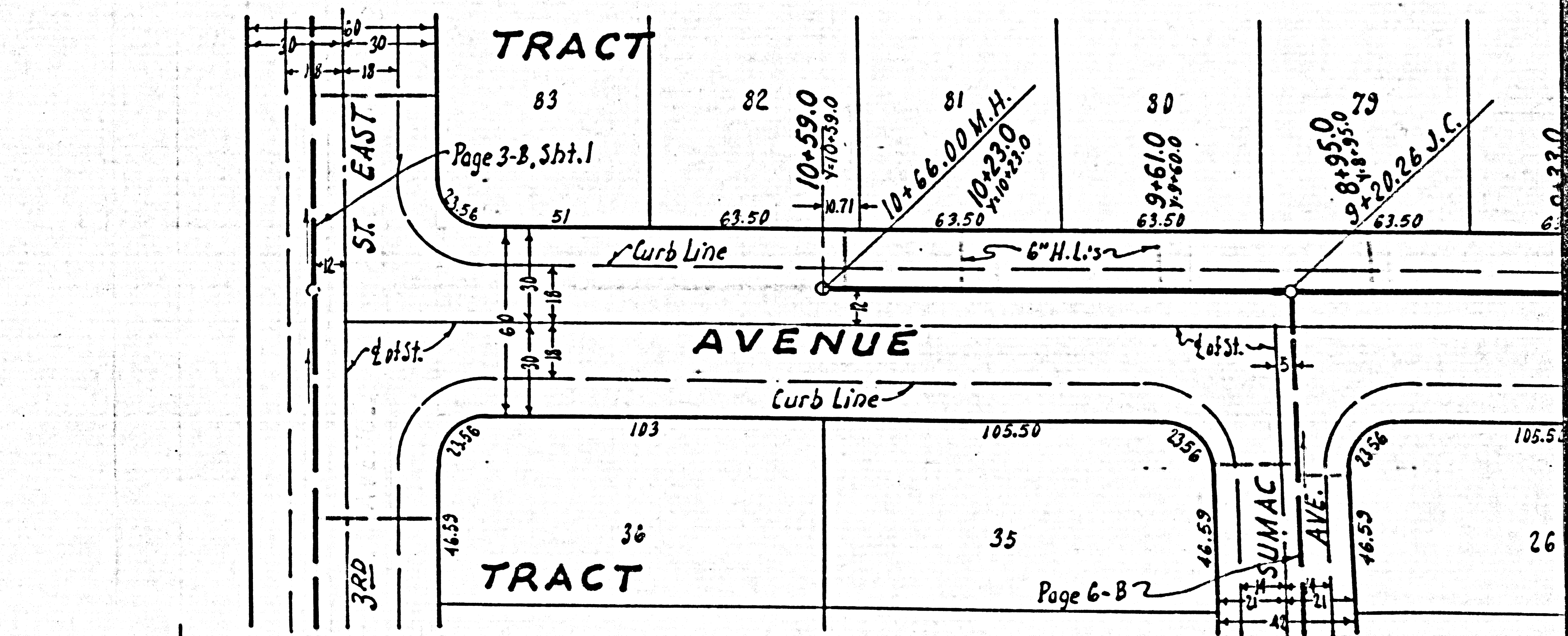
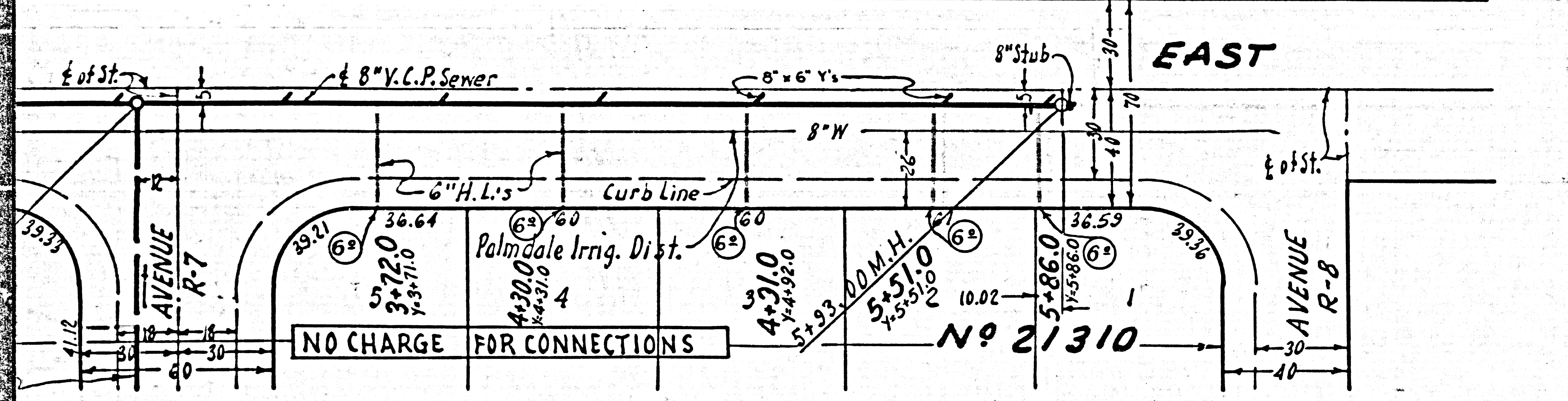
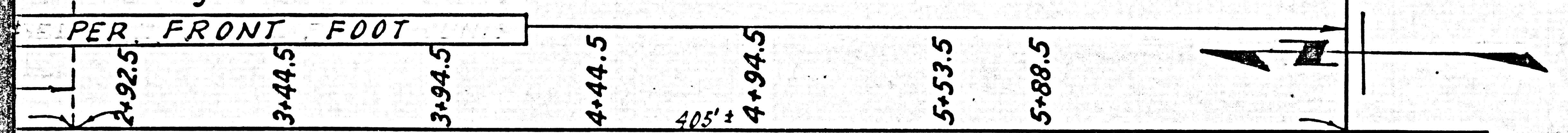
P.C. 3731
PAGE 5

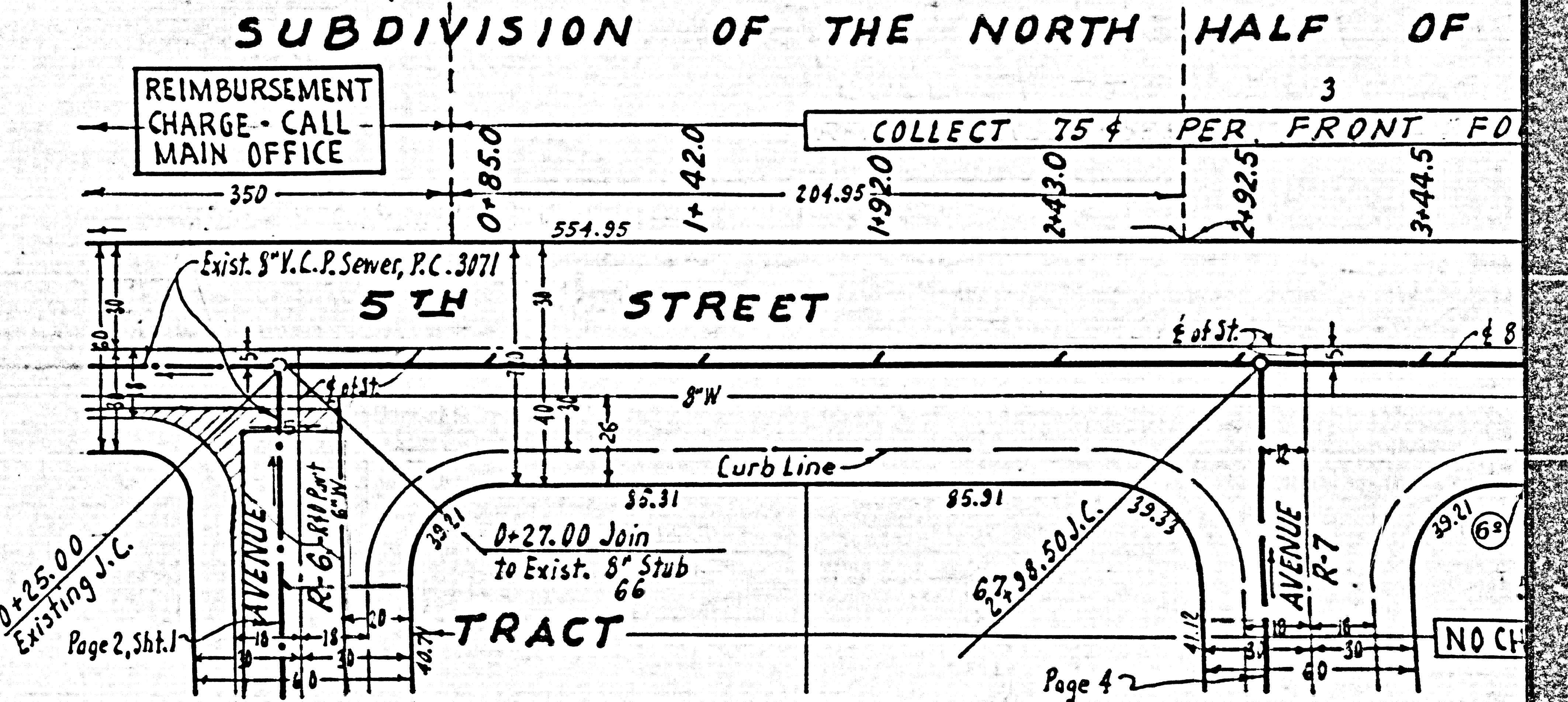
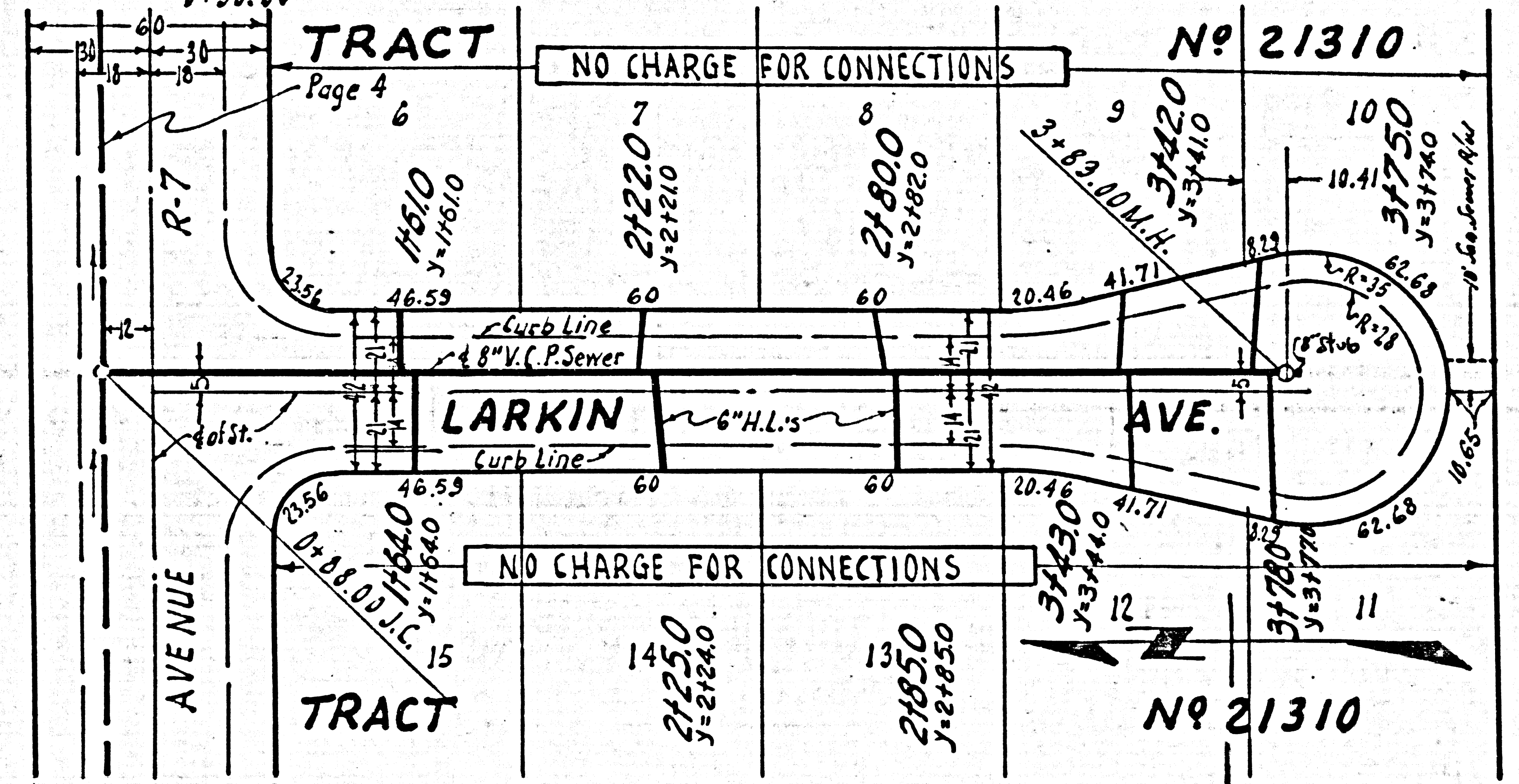
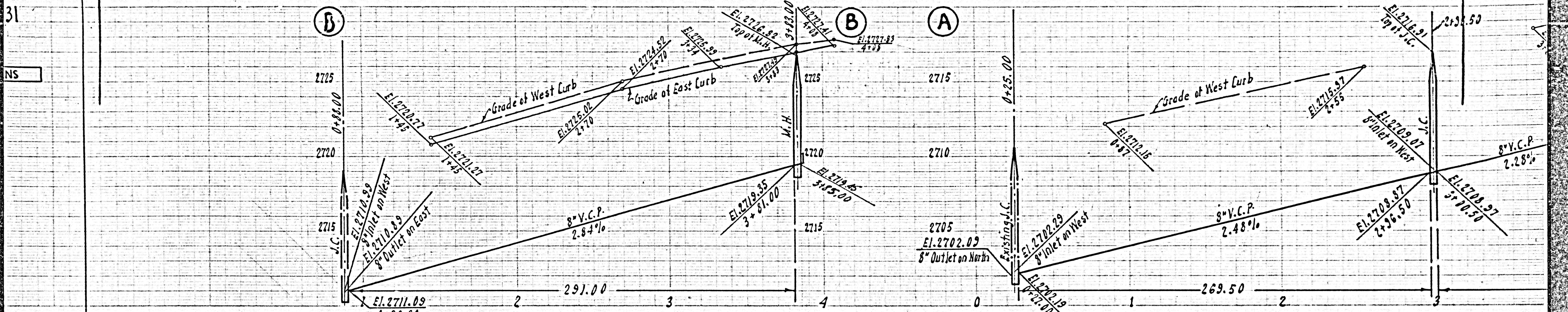
CONNECTION CHARGES
AS INDICATED

24,626
B



HALF OF SECTION 35, T. 6 N., R. 12 W.
M. R. 60-79





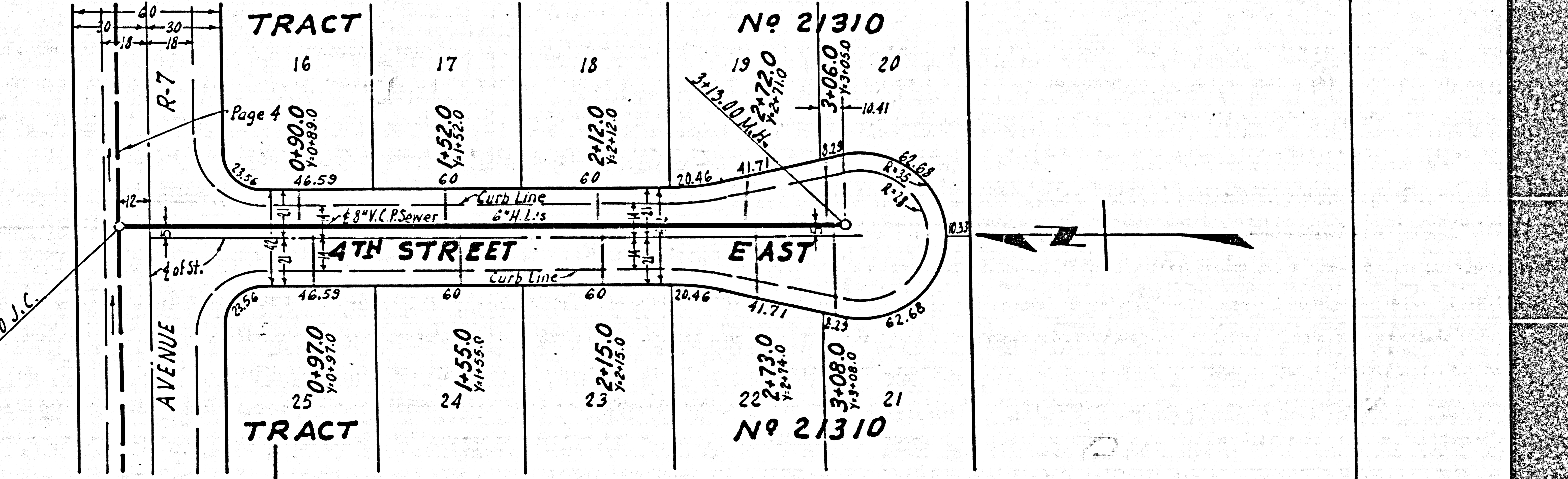
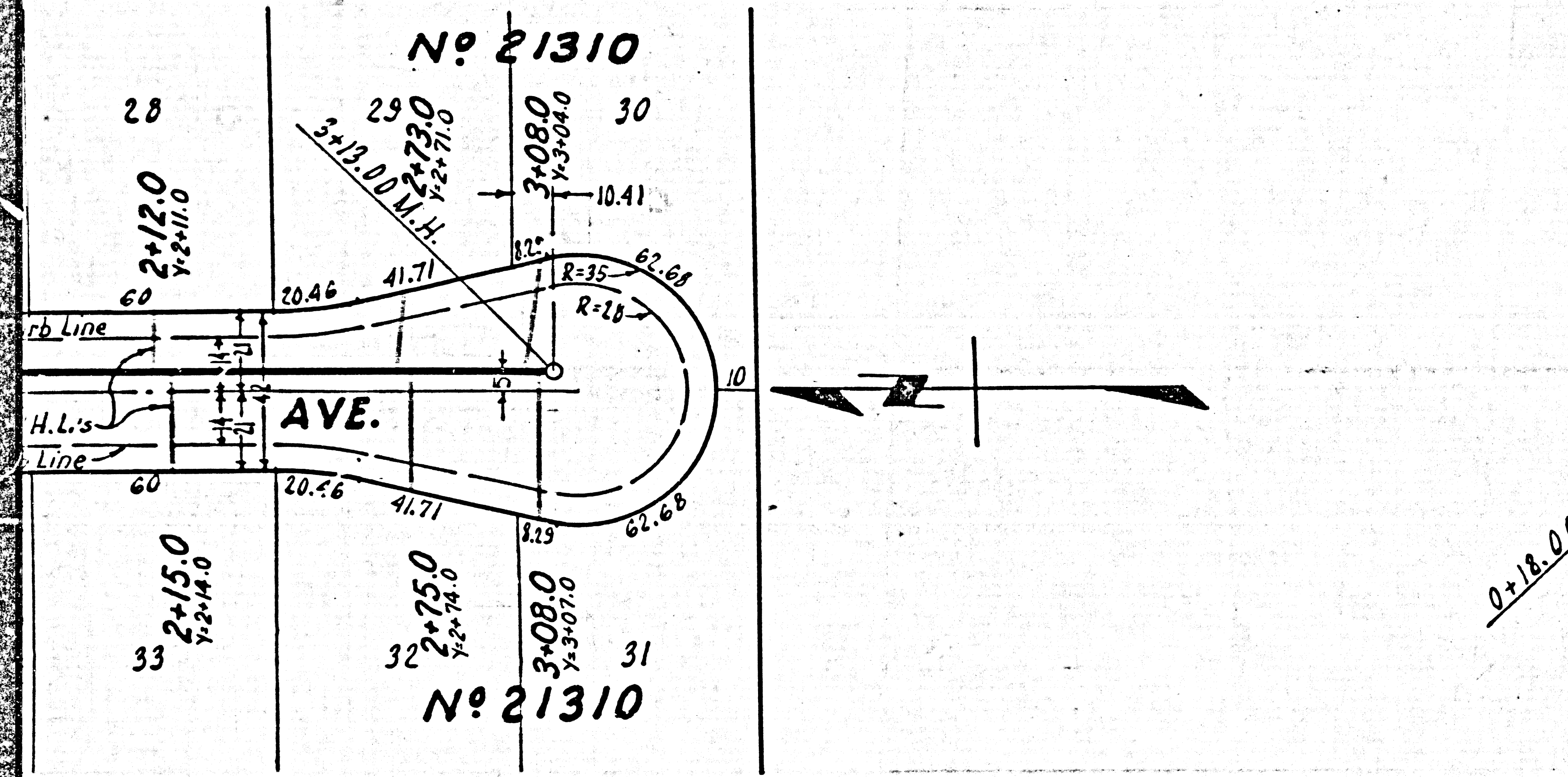
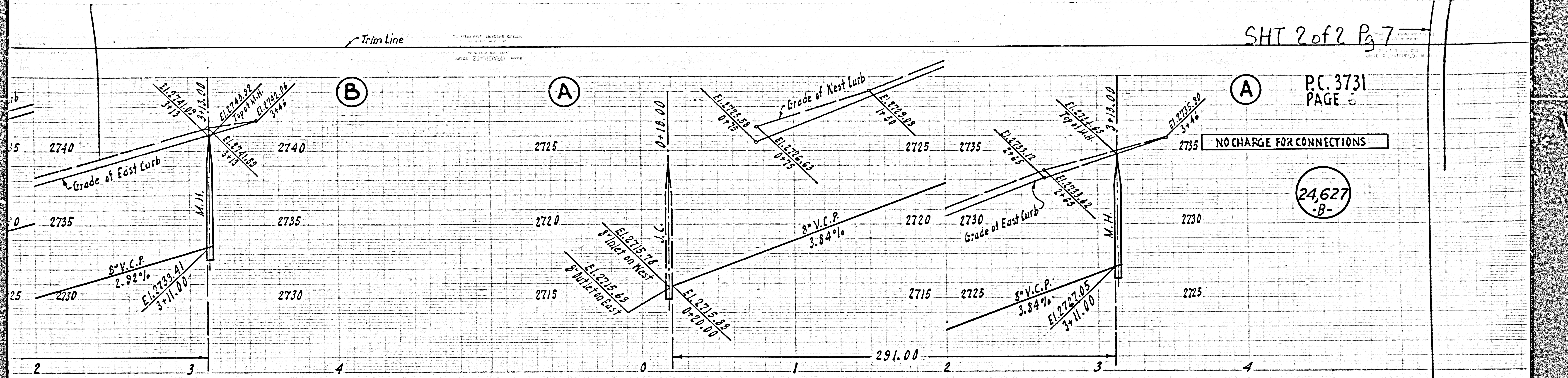
Pg 7
31
NS

Trim Line

Trim Line

NO CHARGE FOR CONNECTIONS

24,627
-B-



Trim Line

P.C. 3731 SHT 2 of 2 Pg. 8

(B)

