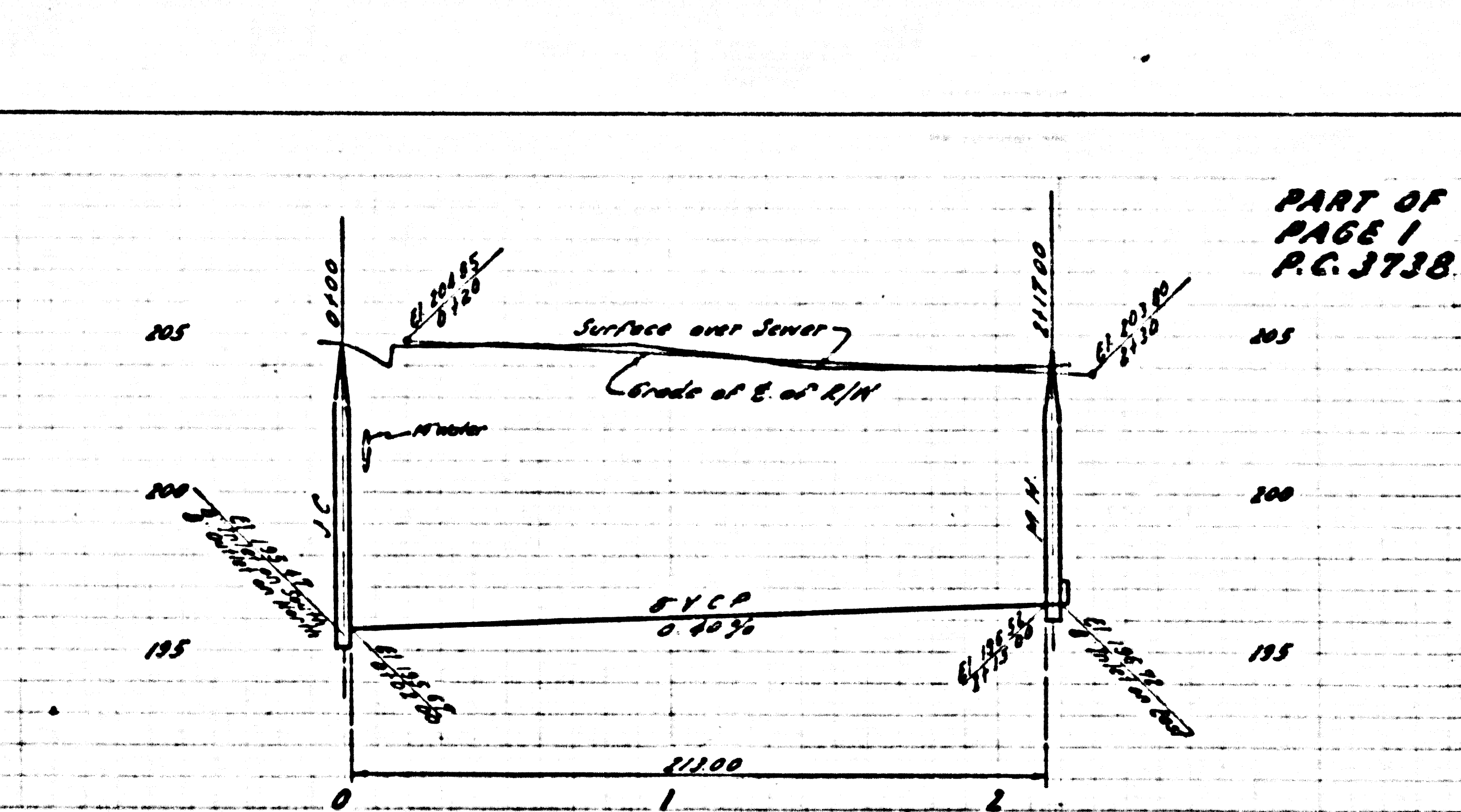
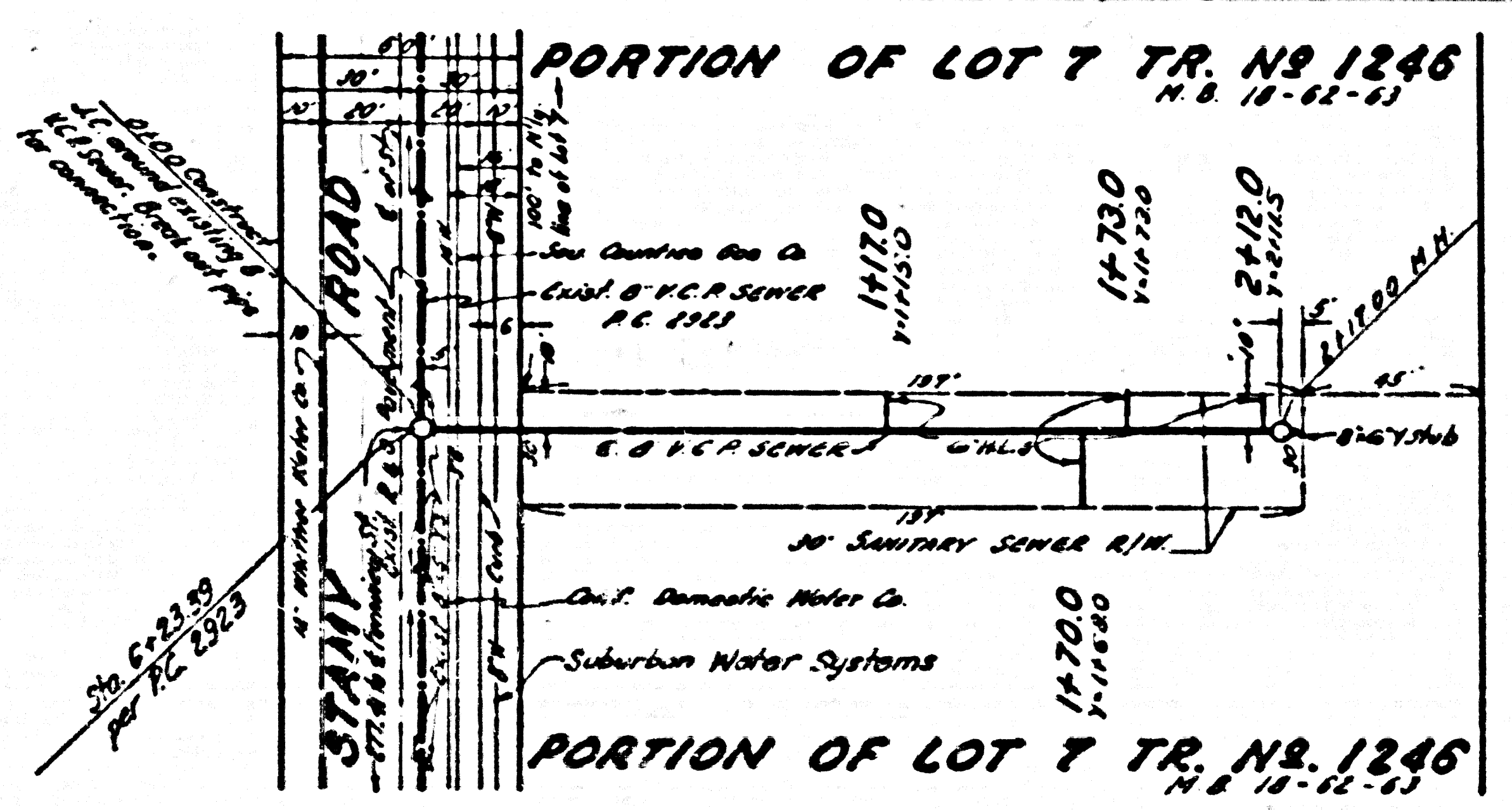


PC 3738



PART OF PAGE 1 P.C. 3738

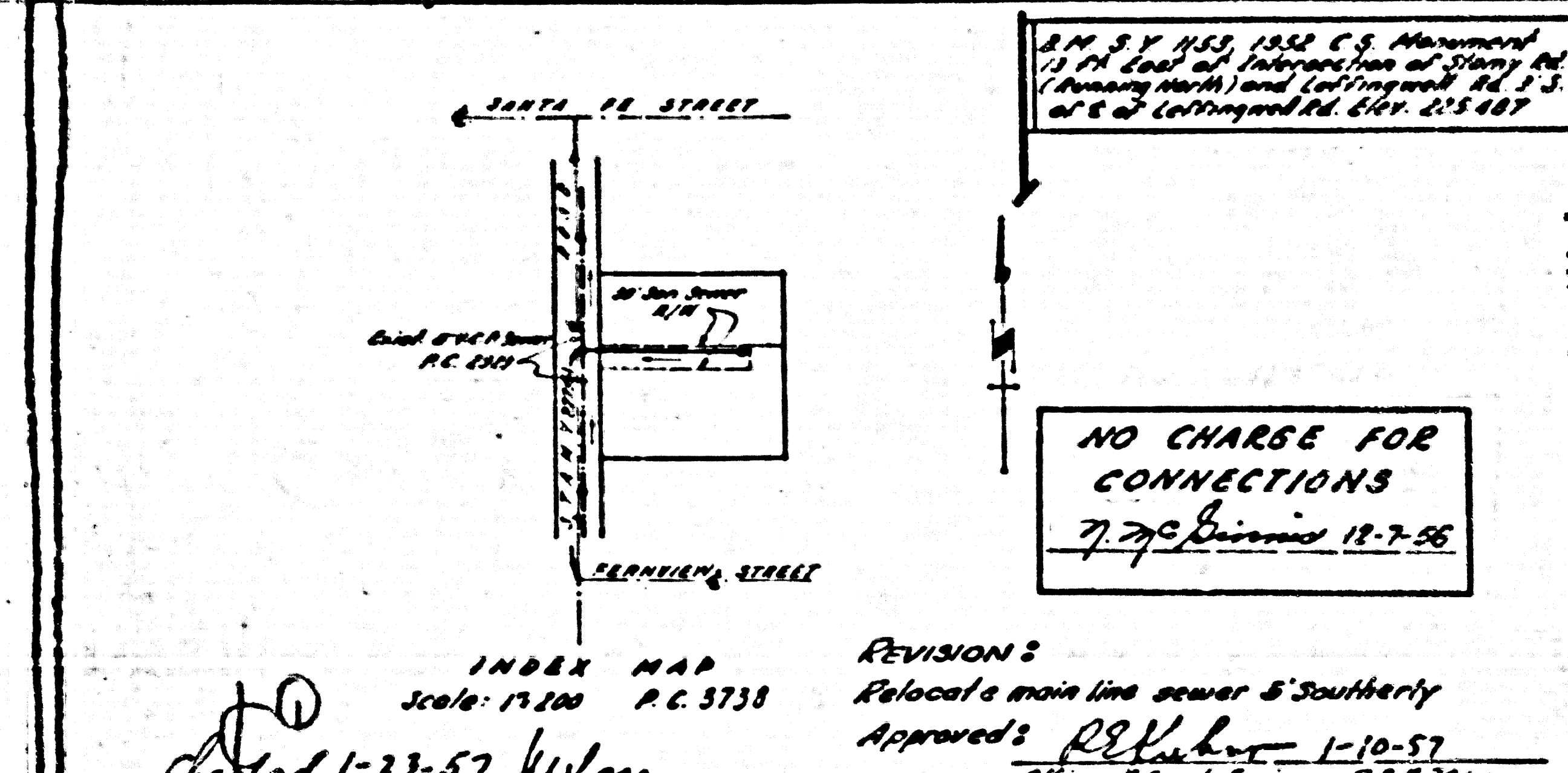


PORTION OF LOT 7 TR. N3 1246 N.S. 18-62-53

PORTION OF LOT 7 TR. N3 1246 N.S. 18-62-53

WHITTIER BLDG. DIST. NO 11

USE STANDARD STRENGTH PIPE SPEC. AS SHOWN
USE CEMENT MORTAR FOR ALL VITRIFIED CLAY PIPE JOINTS
ENCASE FOUR FEET OF SEWER AT POINTS OF INTERFERENCE WITH POLES AS PER S. 413
CONSTRUCT HOUSE LATERALS WITH INVERTS AT BASHMENT LINE STREET BELOW CENTERLINE OF BASHMENT
ALL STRUCTURES SHALL BE BRICK SEWER STRUCTURES AS PER PLAN NO. S-104
USE STANDARD HANGNUT FRAMES AND COVERS AS PER PLAN NO. S-117
CONSTRUCT TOPS OF ALL STRUCTURES IN RIGHTS OF WAY 6" ABOVE FINISHED GRADE
RESURFACE ALL TRENCHES WITHIN PAVED AREA TO MEET LOS ANGELES COUNTY ROAD DEPT. OF STATE HIGHWAY REQUIREMENTS IN ACCORDANCE WITH PERMIT
FOR ALLOWABLE LEAKAGE TEST USE FORMULA $NR = 1$ SPACS, SEC. 96 PROVIDES STAKES ON THE PROPERTY LINES OR PROPERTY LINES PRODUCED AT RIGHT ANGLES TO THE DRAINAGE LINE AT THE CENTER LINE OF EACH MANHOLE
NO REVISIONS SHALL BE MADE IN THESE PLANS WITHOUT APPROVAL OF THE COUNTY ENGINEER
NO REPRESENTATIVE OF THE COUNTY ENGINEER WILL SURVEY OR LAY-OUT ANY PORTION OF THE WORK
THE OWNER OR HIS AUTHORIZED REPRESENTATIVE SHALL FURNISH THE COUNTY ENGINEER WITH GRADE SHEETS AND STATIONS OF ALL HOUSE LATERALS AND BRANCHES AND SHALL PROVIDE STAKES FOR THEM AT THEIR PROPER LOCATIONS WITH STATIONING PLANS, Y MARKED
ANY CHANGE OF LOCATION SHALL BE REQUESTED IN WRITING BY THE OWNER OR HIS REPRESENTATIVE



INDEX MAP Scale: 1/2" = 10' P.C. 3738

Approved 1-23-57 Wilson
Tim Line

REVISIONS
Relocate main line sewer S' Southerly
Approved: R. J. ... 1-10-57
Office of County Engineer P.E. # 7860

NO CHARGE FOR CONNECTIONS
7-79-56
12-7-56

PAGE 1 P.C. 3738

24,034

PROFILE ALIGNMENT AND GRADE OF
SANITARY SEWERS
TO BE CONSTRUCTED IN

SANITARY SEWER R/W.
SOUTH OF SANTA FE STREET

PRIVATE CONTRACT NO. 3738
W. S. 34

1 SHEET
NOVEMBER, 1955

SCALE: 1" = 10' HORIZ. 1" = 4' VERT.

PREPARED IN THE OFFICES OF
KEMMERER ENG. CO.
BY: John C. Kemmerer
REG. E. & S. 8144

FOR LEGEND
SEE PLAN NO. S-104

NOTES:
GRADE POINTS TO WHICH THIS IMPROVEMENT IS TO BE CONSTRUCTED ARE SHOWN ON PLANS AND PROFILES. GRADE POINTS FOR TOP OF CURB, CENTER LINE OF STREET OR CENTER LINE OF ALLEY ARE SHOWN BY UNCLERED PROFILES AT ALL POINTS BETWEEN DESIGNATED POINTS. THE GRADE SHALL BE ESTABLISHED AS TO CONFORM TO A STRAIGHT LINE DRAWN BETWEEN SAID DESIGNATED POINTS.
ELEVATIONS ARE TO BE SET ABOVE U.S.C. & G.S. MEAN LEVEL DATUM OF 1929.
THIS DRAWING AND THE DATA HEREON ARE HEREBY MADE A PART OF THE SPECIFICATIONS.
WORK SHALL BE CONSTRUCTED ACCORDING TO SPECIFICATIONS ON FILE IN THE OFFICE OF THE COUNTY ENGINEER AND SHALL BE PROSECUTED ONLY IN THE PRESENCE OF THE COUNTY ENGINEER.
BEFORE WORK CAN BE STARTED THE CONTRACTOR MUST OBTAIN A PERMIT TO EXCAVATE IN CITY STREETS FROM THE L. A. COUNTY ROAD DEPT. 85 S. INE. STREET AND MAKE A DEPOSIT WITH THE COUNTY ENGINEER WITH \$10.00 ROADWAY SURVEY TO COVER THE COST OF CONSTRUCTION INSPECTION AND RECORD PLANS.
IF WORK IS TO BE DONE IN A STATE HIGHWAY, A PERMIT MUST BE OBTAINED FROM THE STATE OF CALIFORNIA, DIVISION OF HIGHWAYS, 158 S. STRENGTH ST. AFTER MAKING THE DEPOSIT WITH THE COUNTY ENGINEER.
APPROVAL OF THIS PLAN BY THE COUNTY OF LOS ANGELES DOES NOT CONSTITUTE A REPRESENTATION AS TO THE ACCURACY OF THE LOCATION OF OR THE EMBLEM OR NON-EXISTENCE OF ANY UNDERGROUND UTILITY, PIPE, OR STRUCTURE WITHIN THE LIMITS OF THIS PROJECT. THIS NOTE APPLIES TO ALL SHEETS.

APPROVED: John A. Lambie, County Engineer
BY: J. P. ...
COUNTY OF LOS ANGELES, CALIFORNIA

CHECKED BY: ... 12-11-55

P.C. 3738 SOUTH OF SANTA FE STREET