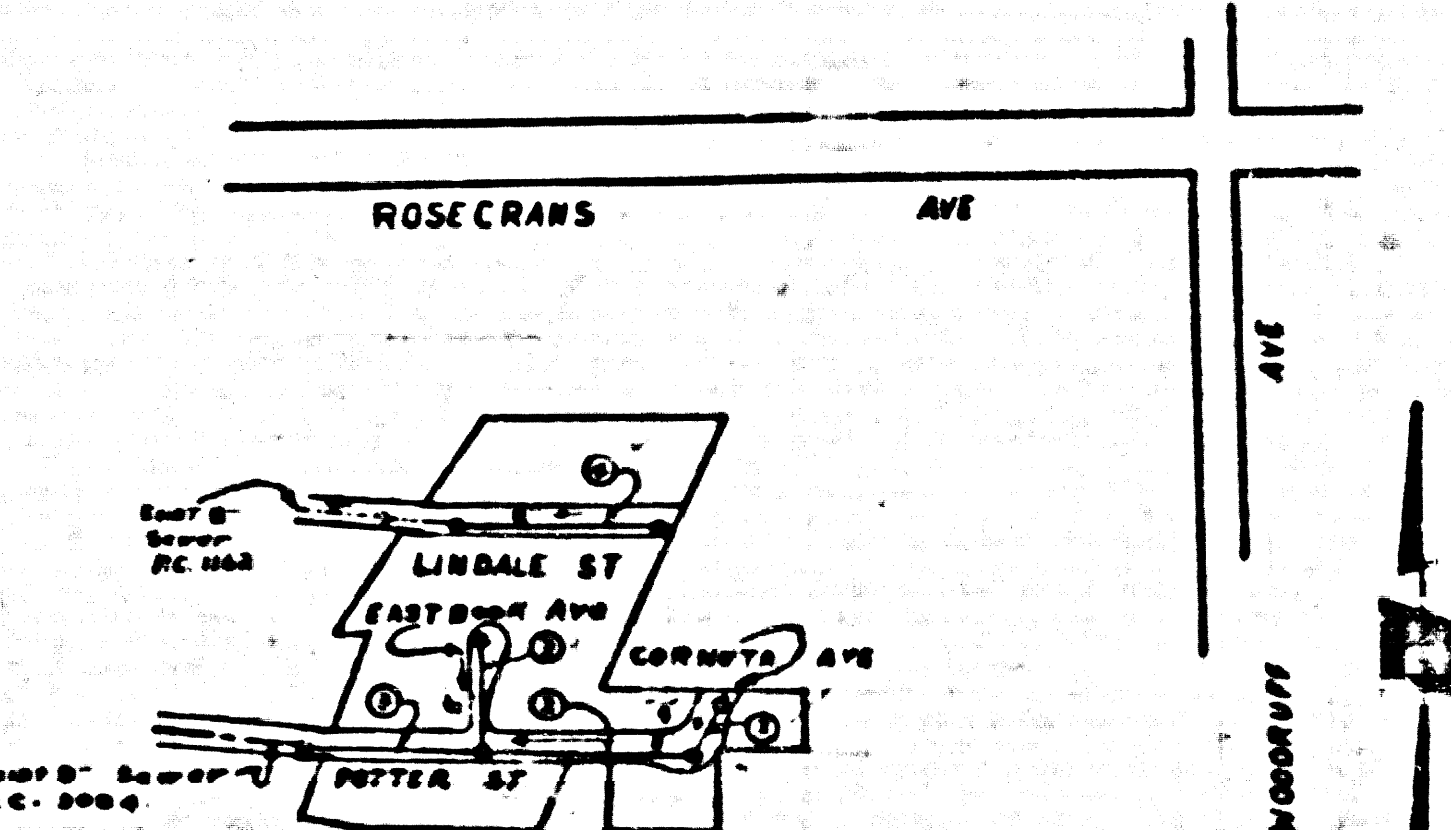


BELLFLOWER BLDG DIST N<sup>o</sup> 4

- NOTE:**
- Provide stakes on the property lines or property lines produced at right angles to the cover line at the center line of each manhole.
- No representative of the County Engineer will survey or layout any portion of the work.
- The owner or his authorized representative shall furnish the County Engineer with grade sheets and stations for all house laterals and Y branches and shall provide stakes for them at their proper locations with stationing plainly marked. Any change in location shall be requested in writing by the owner or his representative.
- No revisions shall be made in these plans without the approval of the County Engineer.
1. Use standard manhole frames and covers, S-117.
  2. Use standard strength pipe except as noted.
  3. Use cement mortar for all vitrified clay pipe joints.
  4. Resurface all trench within paved area to meet L.A. County Road Dept. or California State Highway Dept. requirements in accordance with permit.
  5. Encase four feet of sewer at points of interference with poles, S-119.
  6. House laterals to be constructed with 4" Riser Per Foot To Property Line.
  7. All structures shall be brick cover structures, S-104.
  8. For allowable leakage test, see Formula No. 1, Spec's, Sec. 51.
  9. Manhole tops in unimproved Right-Of-Way to be 6" above finish grade.

B.M.-SV2144 ELEV B2142  
 L.A. Co. Surv. Brass Cap Man  
 @ In A Maplewood Ave & Fleming Ave  
 & Washington St. to the East.

SHEET	PAGES
1	1-6



INDEX MAP  
 SCALE: 1" = 400'  
 TRACT N<sup>o</sup> 20770

NO CHARGE FOR CONNECTIONS  
 L. C. 1-31-56

PROFILE, ALIGNMENT AND GRADE OF  
 SANITARY SEWERS  
 TO BE CONSTRUCTED IN

TRACT N<sup>o</sup> 20770

PC. 3741  
 PAGE 1

22,425

PRIVATE CONTRACT NO. 3741  
 W. S. 33  
 I. SHEET

Scale: VERT. 1" = 4'  
 HORIZ. 1" = 40' OCTOBER 1955  
 PREPARED IN THE OFFICES OF  
 MANNING & DETILLA

W. S. Manning Reg. C.E. No. 7876

FOR LEGEND SEE PLAN NO. S-6-64

**NOTE:**

Grades to which this improvement is to be constructed are shown on plans and profiles. Grade points for top of curb, center line of streets, or center line of alleys are shown by circles on profiles. At all points between designated points the grade shall be established so as to conform to a straight line drawn between said designated points.

Elevations are in feet above U.S.C. (C.S. See First Edition of 1929).

This drawing and the data hereon are hereby made a part of the specifications.

Work shall be constructed according to specifications on file in the office of the County Engineer and shall be prosecuted only in the presence of the County Engineer.

Before work can be started, the contractor must obtain a permit to excavate in County streets from the L.A. County Road Dept., 108 W. 2nd St. and make it deposit with the County Engineer, Room 224 - 225 So. Broadway, sufficient to cover the cost of construction inspection and record plans.

Approval of this plan by the County of Los Angeles does not constitute a representation as to the accuracy of the location of or the existence of any underground utility, pipe, or structure within the limits of this project. This note applies to all sheets.

If work is to be done in a State Highway, a permit must be obtained from the State of California, Division of Highways, 120 South Spring Street.

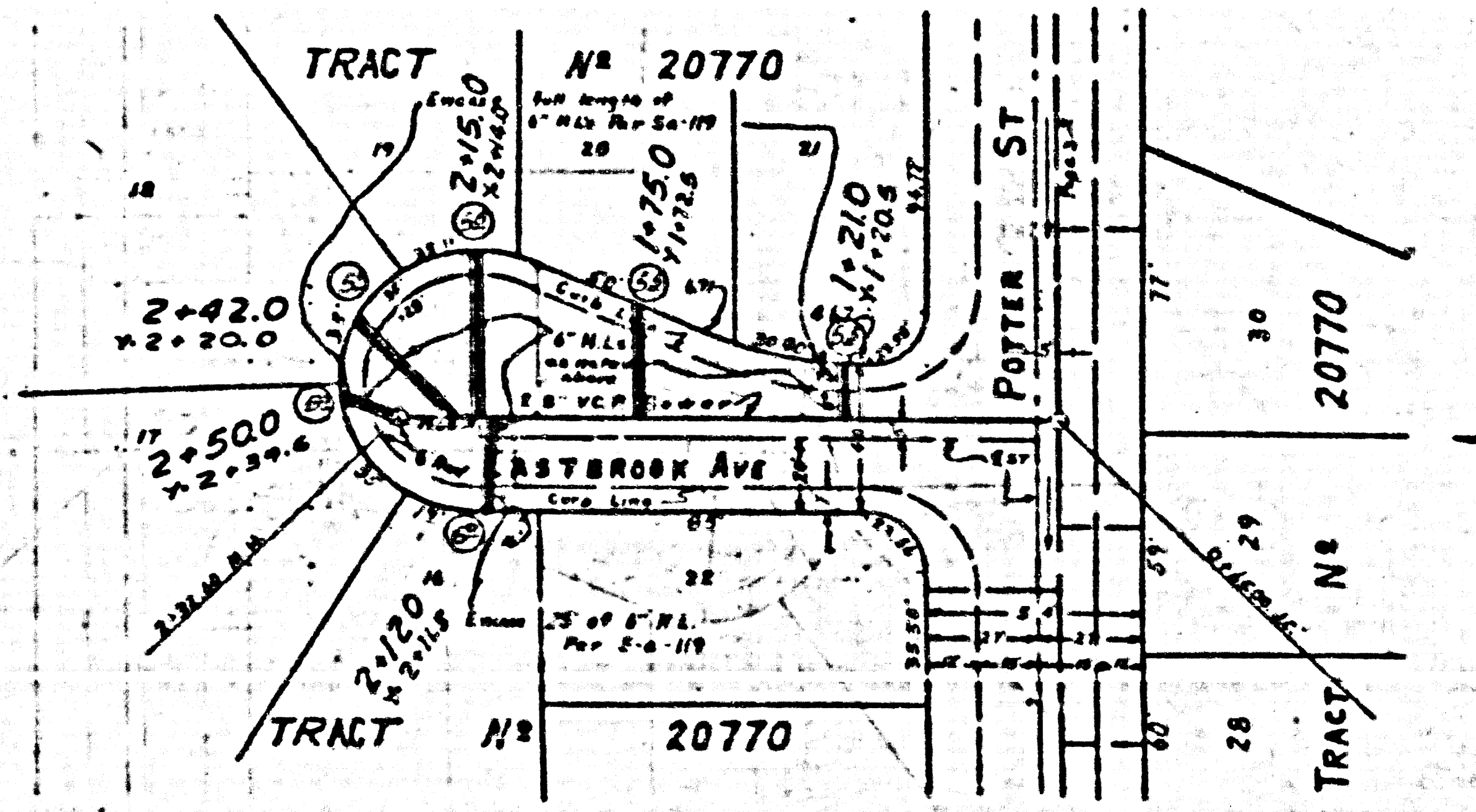
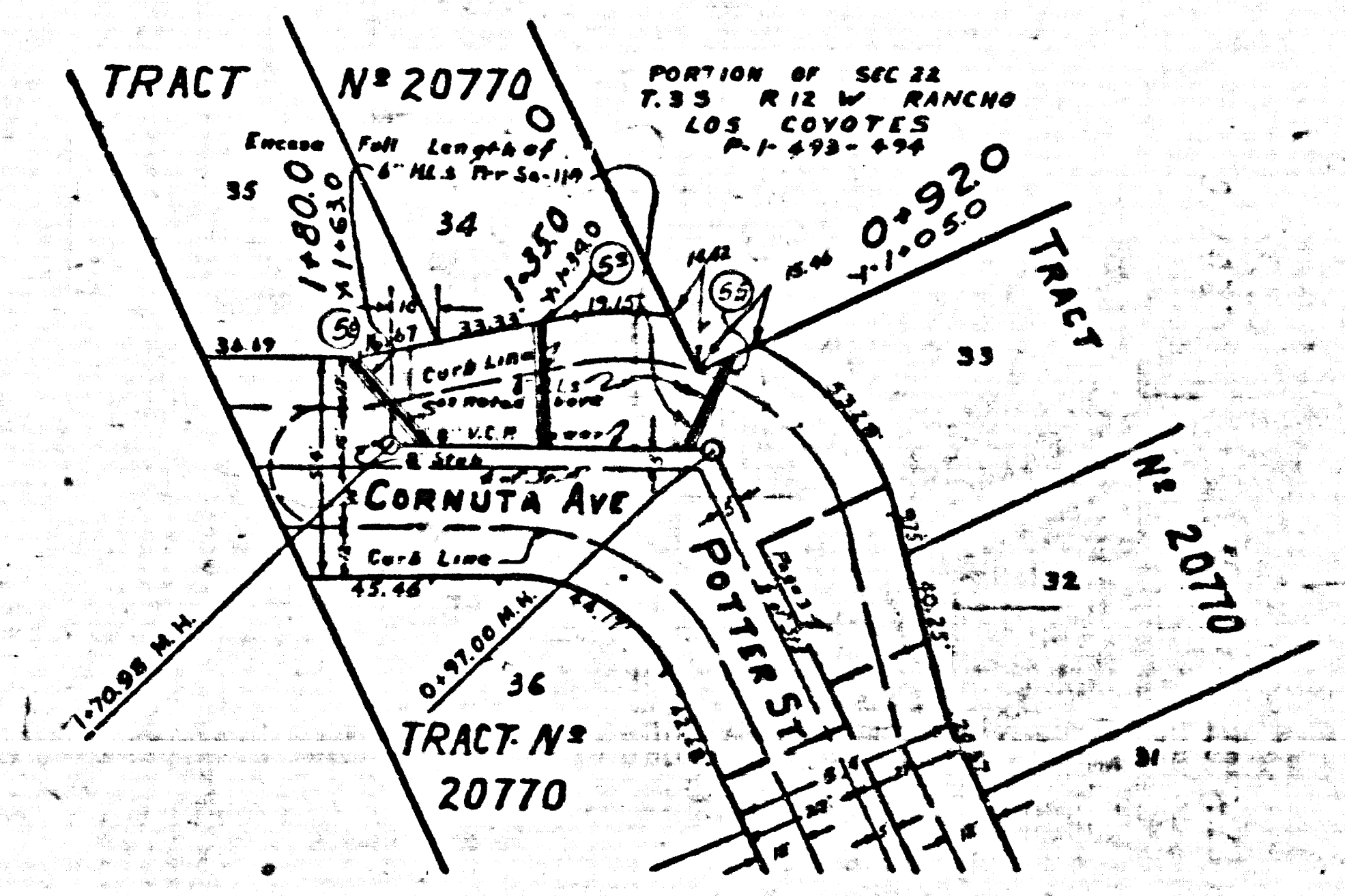
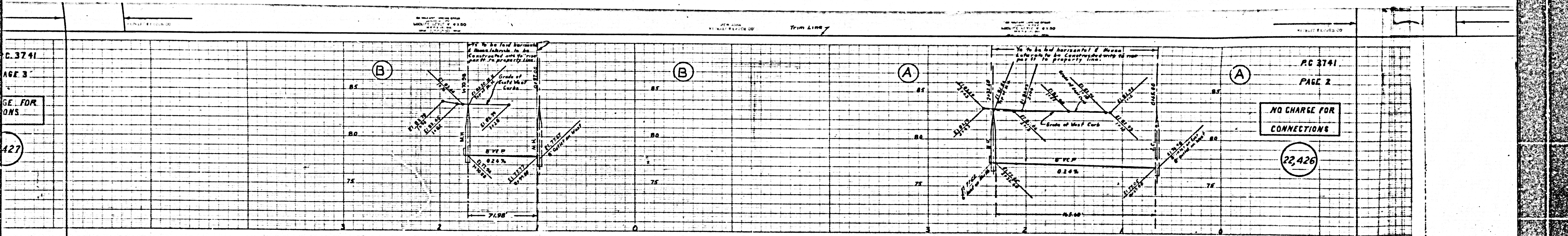
COUNTY OF LOS ANGELES, CALIFORNIA

Approved, Clerk: Lawrence County Engineer Approved, A. M. Egan  
 W. S. Manning Reg. C.E. No. 7876  
 W. S. Manning Reg. C.E. No. 7876  
 Checked By: P. K. ... 2-1-56  
 Office of County Engineer, Reg. C.E. No. 7868

Checked 4-13-56 M. Egan

TRACT N<sup>o</sup> 20770  
 PC. 3741

P.L.

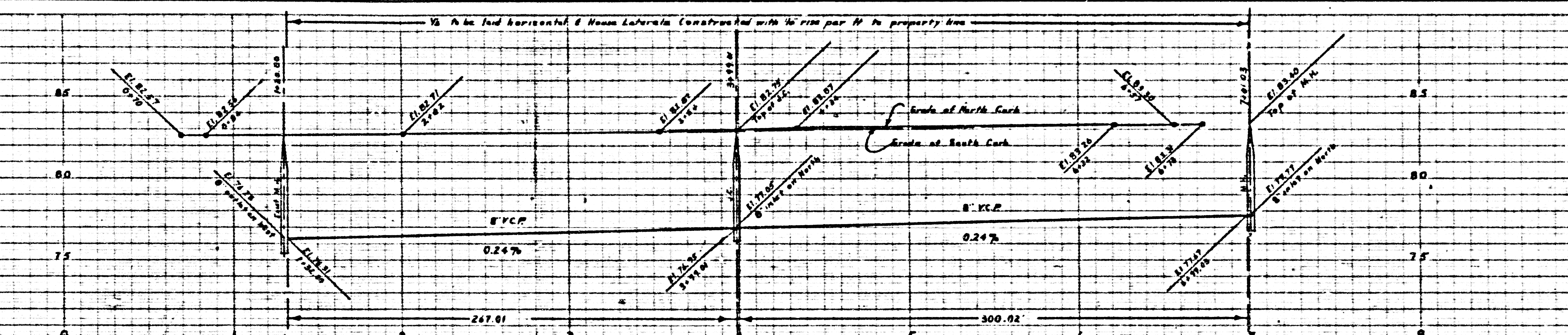


Trim Line (3)

P.C. 3741  
PAGE 4

NO CHARGE FOR CONNECTIONS

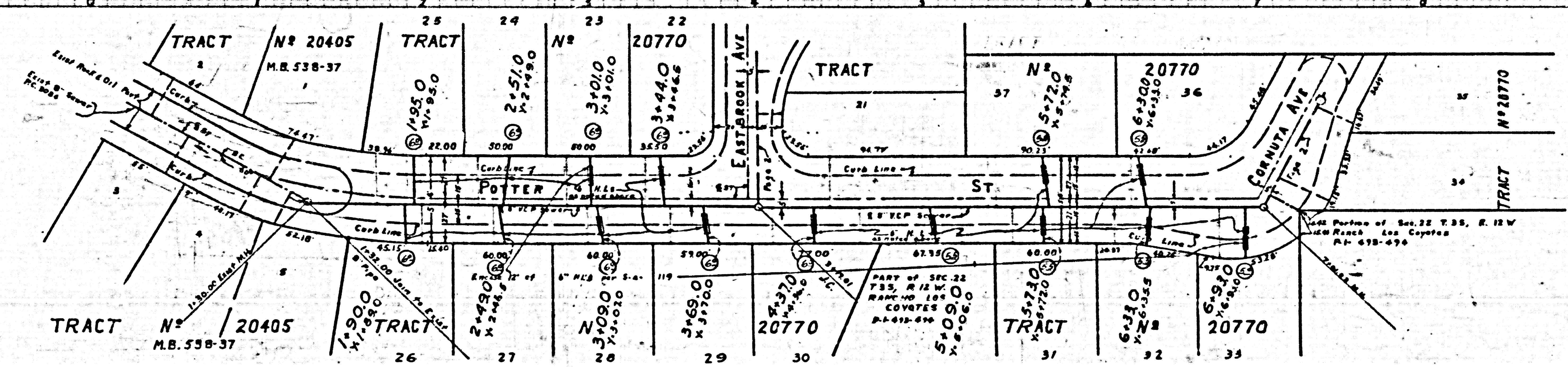
22426

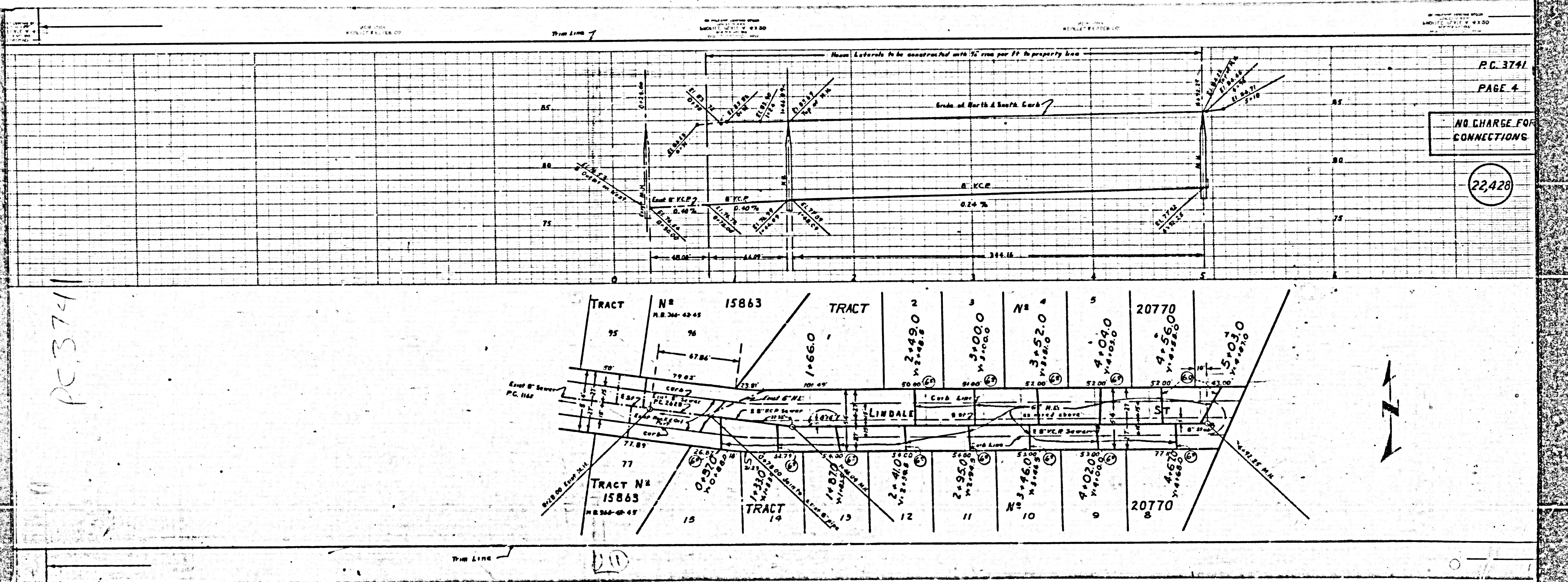


P.C. 3741  
PAGE 3

NO CHARGE FOR CONNECTIONS

22427



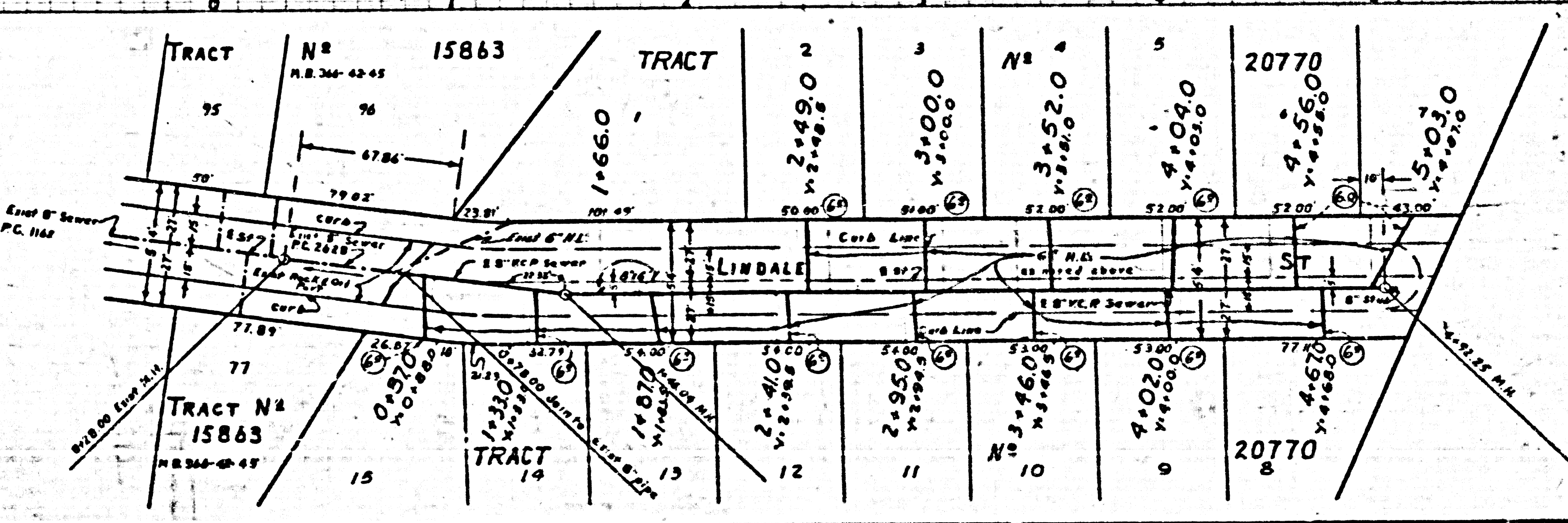


P.C. 3741  
PAGE 4

NO CHARGE FOR CONNECTIONS

22,428

PC 3741



110