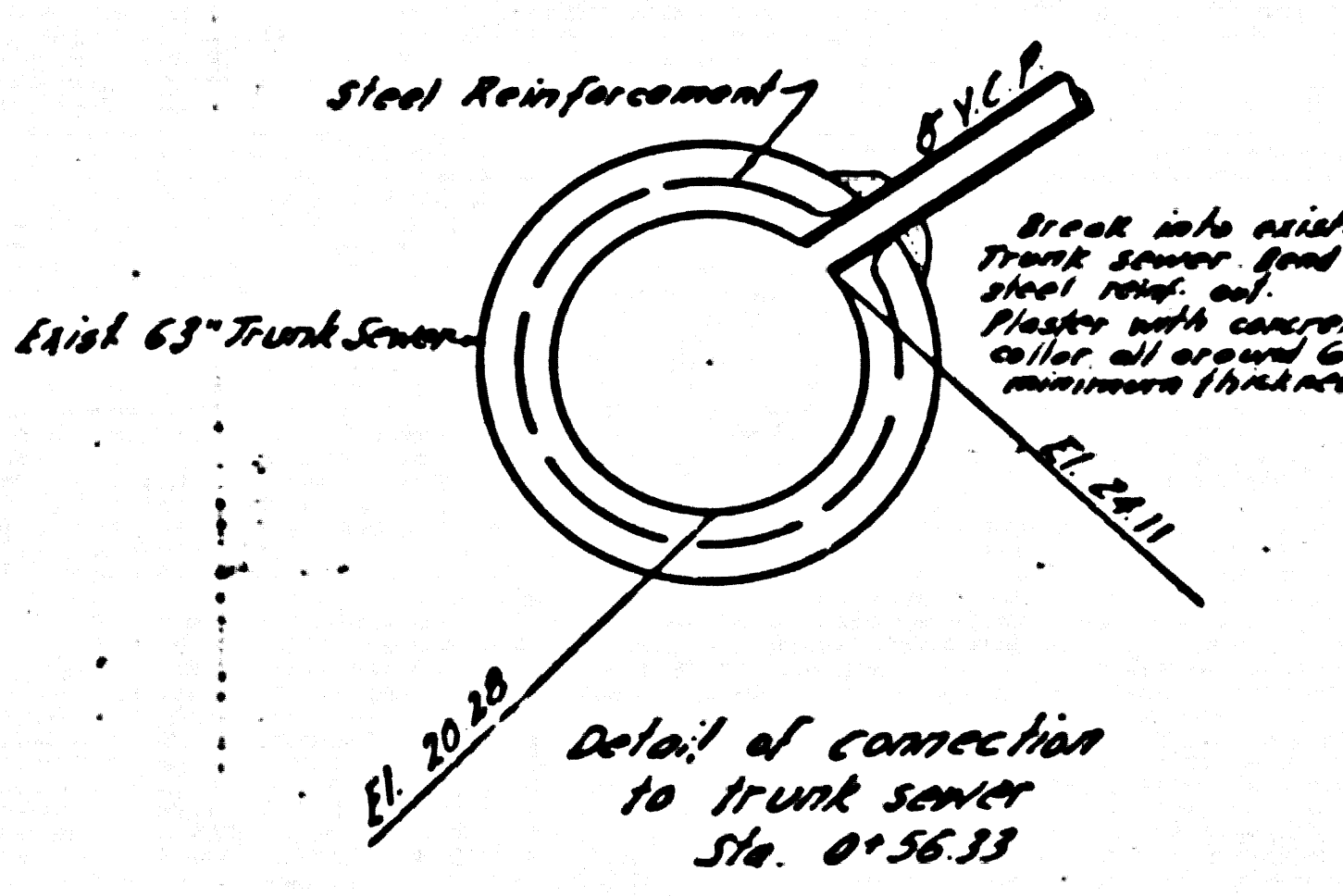


Note: Connection to San. Dist. Trunk sewer to be made in the presence of a County San. Dist. inspector. Place 12" long slab in the San. Dist. pipe & plaster with concrete collar all around with min. of 6" thickness. Connection to the 12" long slab not to be made until San. Dist. inspector has approved the slab.

B.M. 51506 E1-42896 Spk. in conc base 1' S'W of flag pole @ entrance to Harbor Gen Hospital on S. side of Carson St. 7' 1000' E of Normandie.

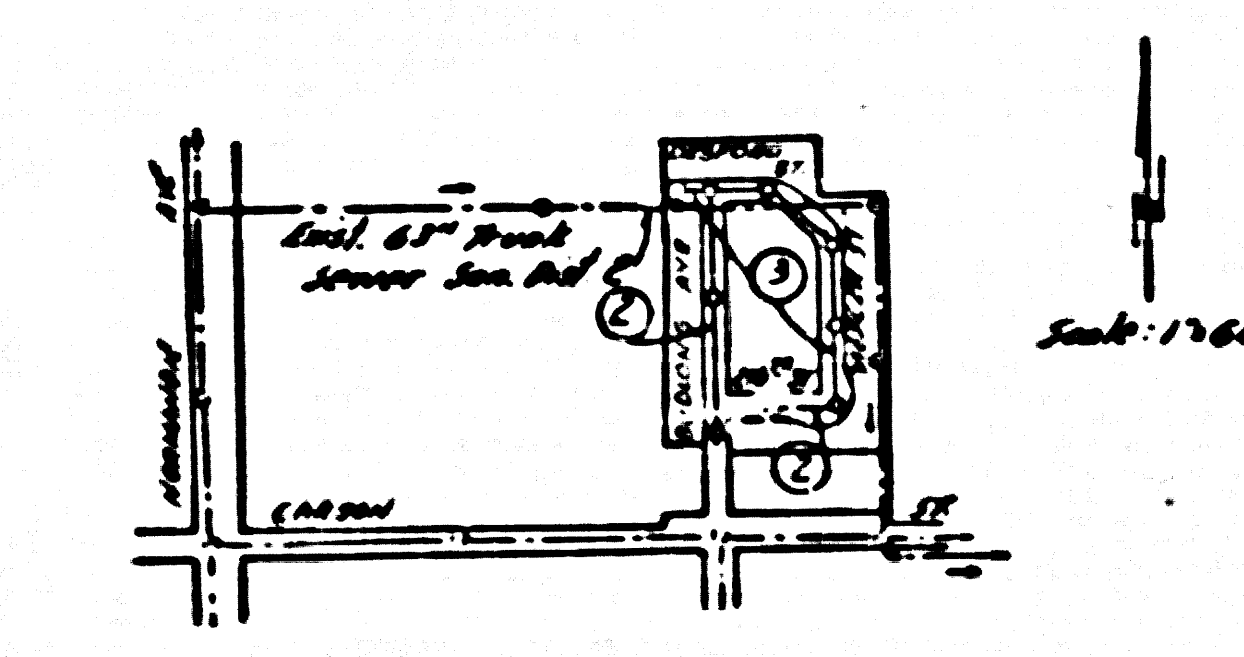


SHEET	PAGES
1	13

Checked 2-21-56 *M. L. ...*

LOMITA BLDG DIST NO 7L

- NOTE:**
- Provide stakes on the property lines or property lines produced at right angles to the sewer line at the center line of each manhole.
 - No representative of the County Engineer will survey or layout any portion of the work.
 - The owner or his authorized representative shall furnish the County Engineer with grade sheets and stations for all house laterals and Y branches and shall provide stakes for them at their proper locations with stationing plainly marked. Any change in location shall be requested in writing by the owner or his representative.
 - No revisions shall be made in these plans without the approval of the County Engineer.
 - Use standard manhole frames and covers, S-a-117.
 - Use standard strength pipe except as noted.
 - Use cement mortar for all vitrified clay pipe joints.
 - Resurface all trench within paved area to meet L.A. County Road Dept. or California State Highway Dept. requirements in accordance with permit.
 - Excise four feet of sewer at points of interference with poles, S-a-119.
 - House laterals to be constructed with inverts at property line \dots \dots feet below curb grade except as noted.
 - All structures shall be brick sewer structures, S-a-104.
 - For allowable leakage test, use Formula No. \dots Spec's., Sec. 51.
 - Manhole tops in unimproved Rights-Of-Way to be 6" above finish grade.



COLLECT CHARGES AS INDICATED
L. ... 11-2-55

INDEX MAP
TRACT NO 21495
P.C. 3744

PROFILE, ALIGNMENT AND GRADE OF
SANITARY SEWERS
TO BE CONSTRUCTED IN
TRACT NO 21495
PRIVATE CONTRACT NO. 3744
W. S. 28
ONE SHEET
Scale: VERT. 1"=4'
HORIZ. 1"=40'
OCT 1955
PREPARED IN THE OFFICES OF
BARCLAY ENGINEERING CO.
FOR LEGEND SEE PLAN NO. S-a-64

NOTE:

Grades to which this improvement is to be constructed are shown on plans and profiles. Grade points for top of curbs, center line of streets, or center line of alleys are shown by circles on profiles. At all points between designated points the grade shall be established so as to conform to a straight line drawn between said designated points.

Elevations are in feet above U.S.G.S. datum or mean sea level.

This drawing and the data hereon are hereby made a part of the specifications.

Work shall be constructed according to specifications on file in the office of the County Engineer and shall be prosecuted only in the presence of the County Engineer.

Before work can be started, the contractor must obtain a permit to occupy in County streets from the L.A. County Road Dept., 108 W. 2nd St. and make a deposit with the County Engineer, 299 S. Broadway, Room 524 sufficient to cover the cost of construction inspection and record plans.

Approval of this plan by the County of Los Angeles does not constitute a representation as to the accuracy of the location or the existence or non-existence of any underground utility, pipe, or structure within the limits of this project. This note applies to all sheets.

If work is to be done in a State Highway, a permit must be obtained from the State of California, Division of Highways, 120 South Spring Street.

COUNTY OF LOS ANGELES, CALIFORNIA

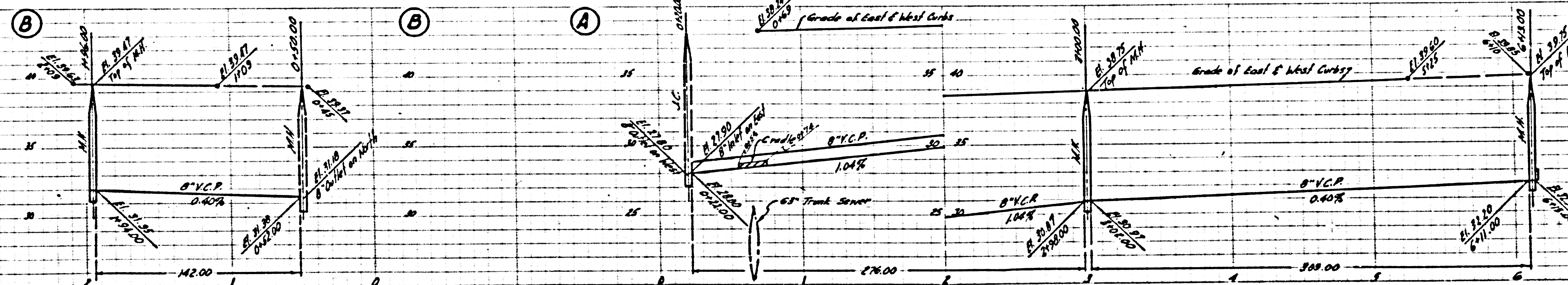
Approved, John A. Lamb, County Engineer
Approved, A. M. Rasmussen, Chief Area Engineer

Checked by: *J. K. ...* 11-2-55
Office of County Engineer, Box C. E. No. 3406

PC. 3744
TRACT NO 21495

P.C. 3744
Page 3

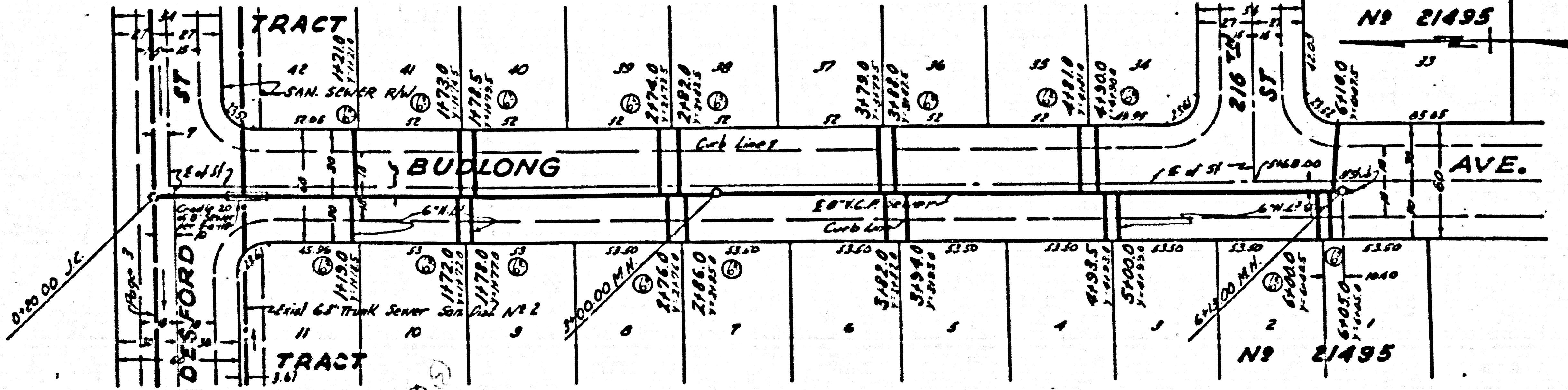
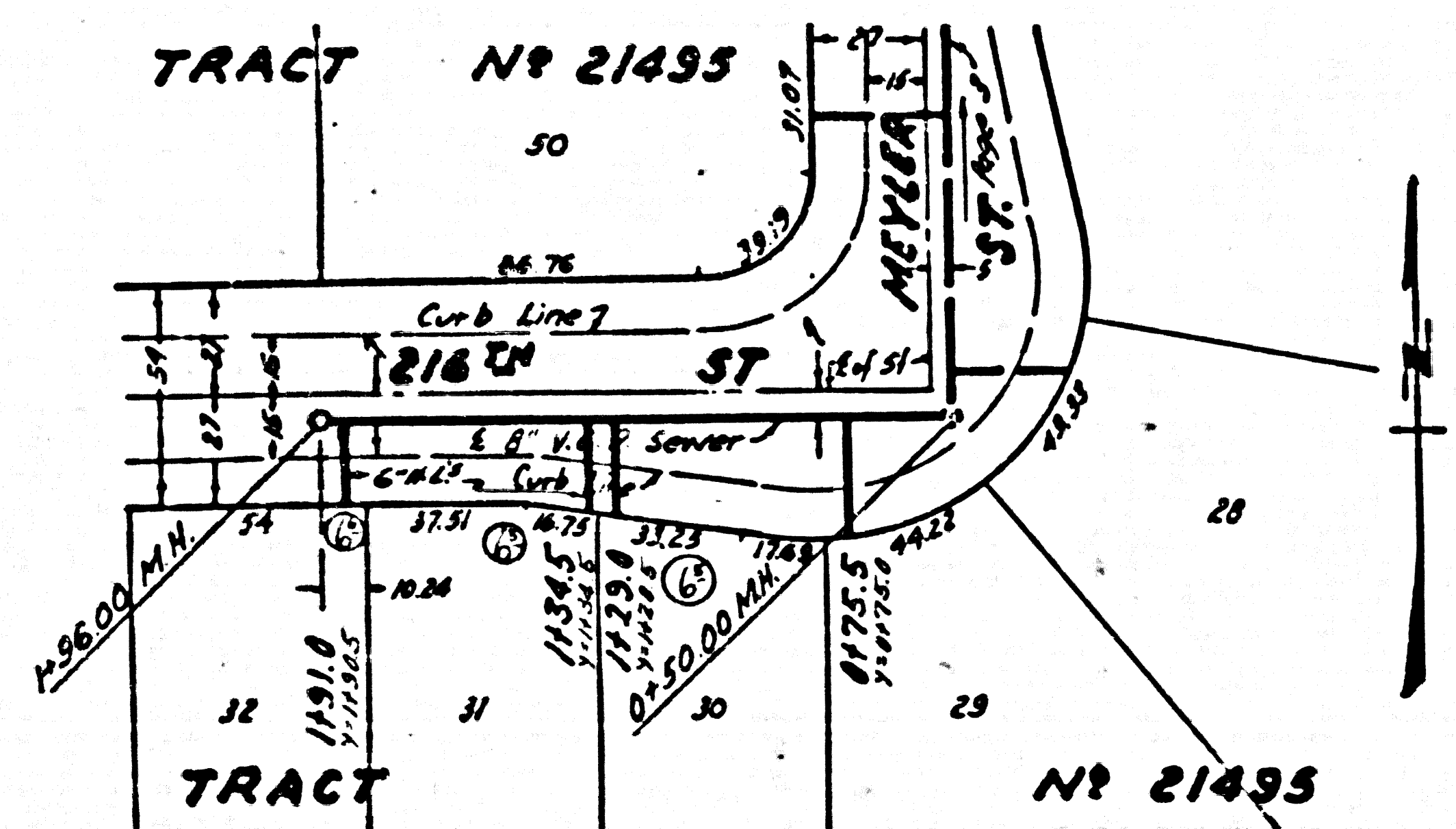
COLLECT CHARGES
AS INDICATED



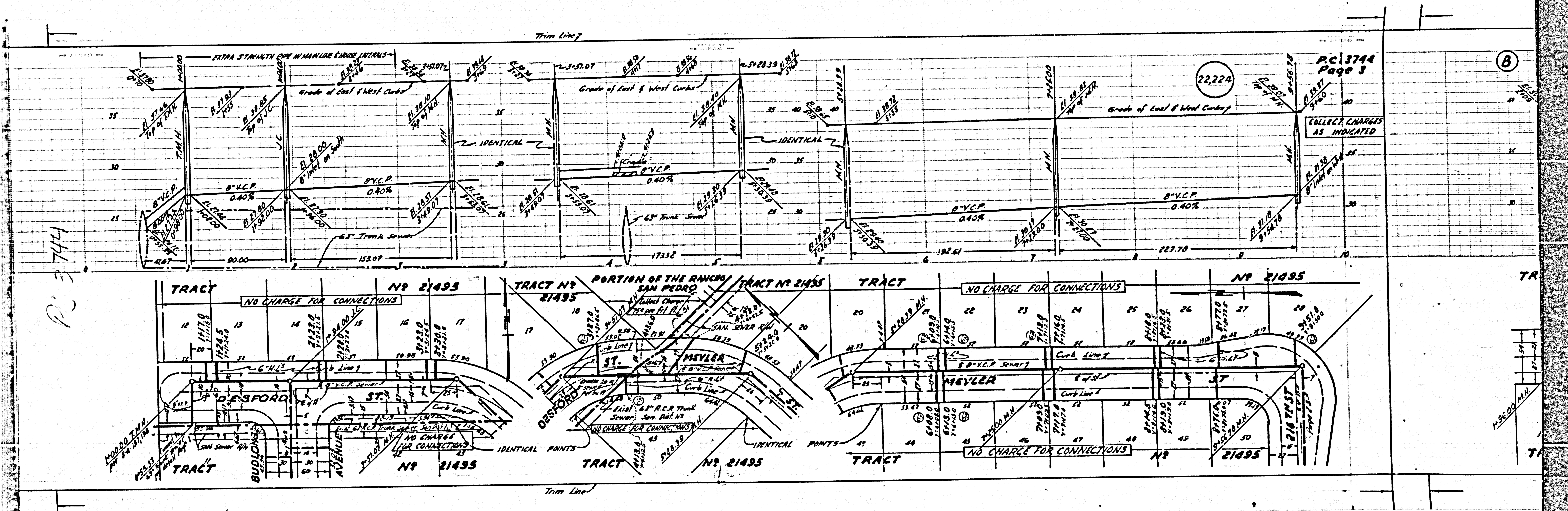
P.C. 3744
Page 2

22,223

NO CHARGE FOR
CONNECTIONS



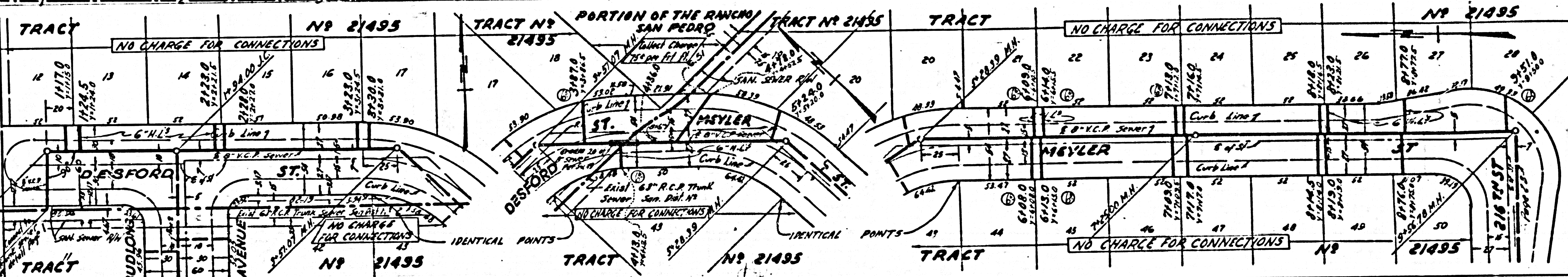
PC 3744



PC 3744
Page 3

(B)

COLLECT CHARGES
AS INDICATED



Trim Line

TR

7