

BENCHMARK ELEV. 400.875
 L.A. Co B.M. S. 8 1976
 N. end of San Gabriel conc. culv.
 on Pass and Covina Rd. 150' S.
 of N.E. cor. of Lot 1, Tr. 16, S 163

NOTE: PUENTE BLDG. DIST. No 2
 Provide stakes on the property lines or property lines produced at right angles to the sewer line at the center line of each manhole.
 No representative of the County Engineer will survey or layout any portion of the work.
 The owner or his authorized representative shall furnish the County Engineer with grade sheets and stations for all house laterals and Y branches and shall provide stakes for them at their proper locations with stationing plainly marked. Any change in location shall be requested in writing by the owner or his representative.
 No revisions shall be made in these plans without the approval of the County Engineer.

1. Use standard manhole frames and covers, S-a-117.
2. Use standard strength pipe except as noted.
3. Use cement mortar for all vitrified clay pipe joints.
4. Resurface all trench within paved area to meet L.A. County Road Dept. or California State Highway Dept. requirements in accordance with permit.
5. Excavate four feet of sewer at points of interference with poles, S-a-119.
6. House laterals to be constructed with inverts at property line 6 feet below curb grade except as noted.
7. All structures shall be brick sewer structures, S-a-104.
8. For allowable leakage test, use Formula No. 1, Spec's., Sec. 51.
9. Manhole tops in unimproved Right-of-Way to be 6" above finish grade.

PROFILE, ALIGNMENT AND GRADE OF
SANITARY SEWERS
 TO BE CONSTRUCTED IN

PC. 3748
 PAGE 1

TRACT No. 21286

23454
 (5)

PRIVATE CONTRACT NO. 3748
 W. S. 38
 1 SHEET

Scale: VERT. 1" = 4'
 HORIZ. 1" = 40' OCTOBER, 1955
 PREPARED IN THE OFFICES OF

A. G. ROSENTHAL & ASSOCIATES
 Arthur G. Rosenthal
 Reg. C. E. No. 2803

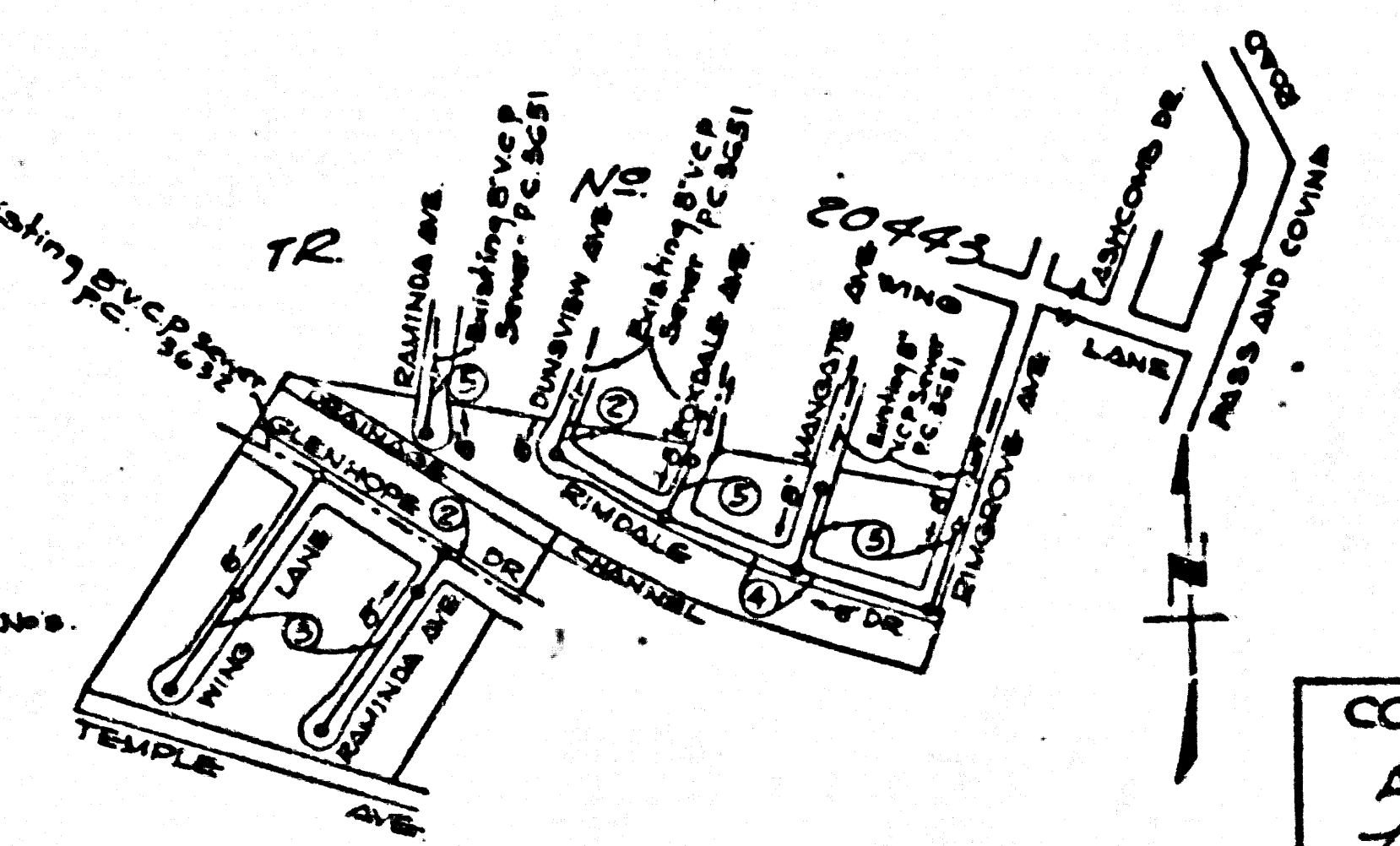
FOR LEGEND SEE PLAN NO. S-a-64

NOTE:
 Grades to which this improvement is to be constructed are shown on plans and profiles. Grade points for top of curbs, center line of streets, or center line of pipes are shown by circles on profiles. At all points between designated points the grade shall be established so as to conform to a straight line drawn between said designated points.
 Elevations are in feet above U.S.C. and G.S. Sea Level Datum of 1929.
 This drawing and the data hereon are hereby made a part of the specifications.
 Work shall be constructed according to specifications on file in the office of the County Engineer and shall be prosecuted only in the presence of the County Engineer.
 Before work can be started, the contractor must obtain a permit to excavate in County streets from the L.A. County Road Dept. 108 W. 2nd St. and make a deposit with the County Engineer, Dm 324 253 South Broadway sufficient to cover the cost of construction inspection and record plans.
 Approval of this plan by the County of Los Angeles does not constitute a representation as to the accuracy of the location of or the existence or non-existence of any underground utility, pipe, or structure within the limits of this project. This note applies to all sheets.
 If work is to be done in a State Highway, a permit must be obtained from the State of California, Division of Highways, 130 South Spring Street.

Note: Before construction begins, contractor is to obtain staking of V's along Glenhope Drive from the Construction Division.

Sheet	Page No.
1	1-5

Note: Figures in circles indicate Page No.



INDEX MAP
 TRACT No 21286 PC. 3748
 SCALE: 1"=400'

COLLECT CHARGES
 AS INDICATED
 L. Lester 1-23-55

COUNTY OF LOS ANGELES, CALIFORNIA
 Approved, John A. ... County Engineer
 Approved, A. H. ...
 Chief Clerk, County Dist. No. 11, Room ...
 L. Lester 1-23-55
 Sanitation Engineer
 Checked by: P. ... 1-25-55
 Office of County Engineer, Reg. C. E. No. 2860

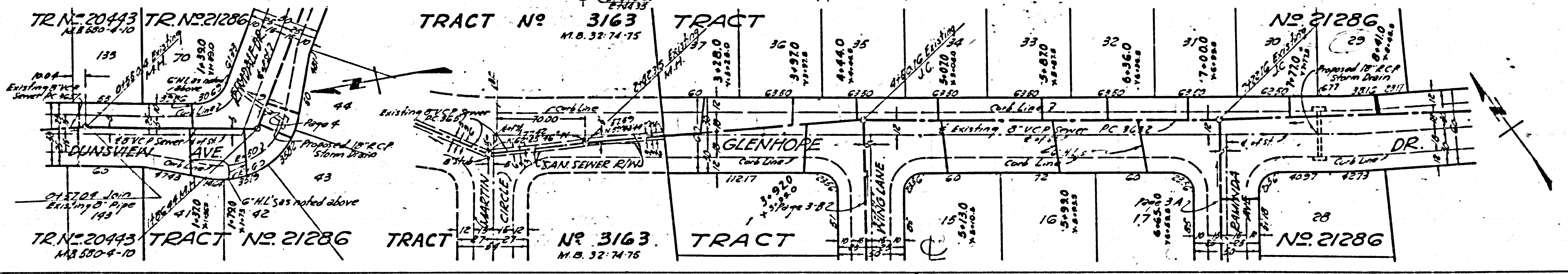
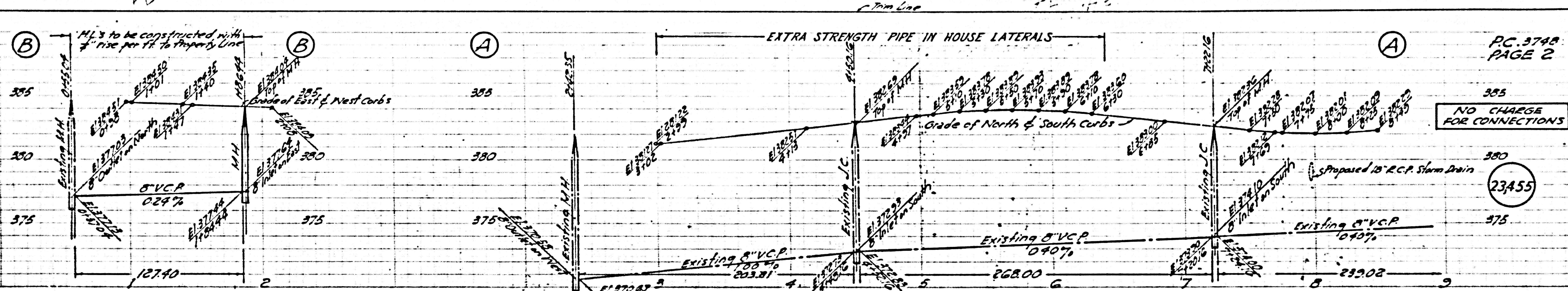
checked 9-17-56 W. Laven

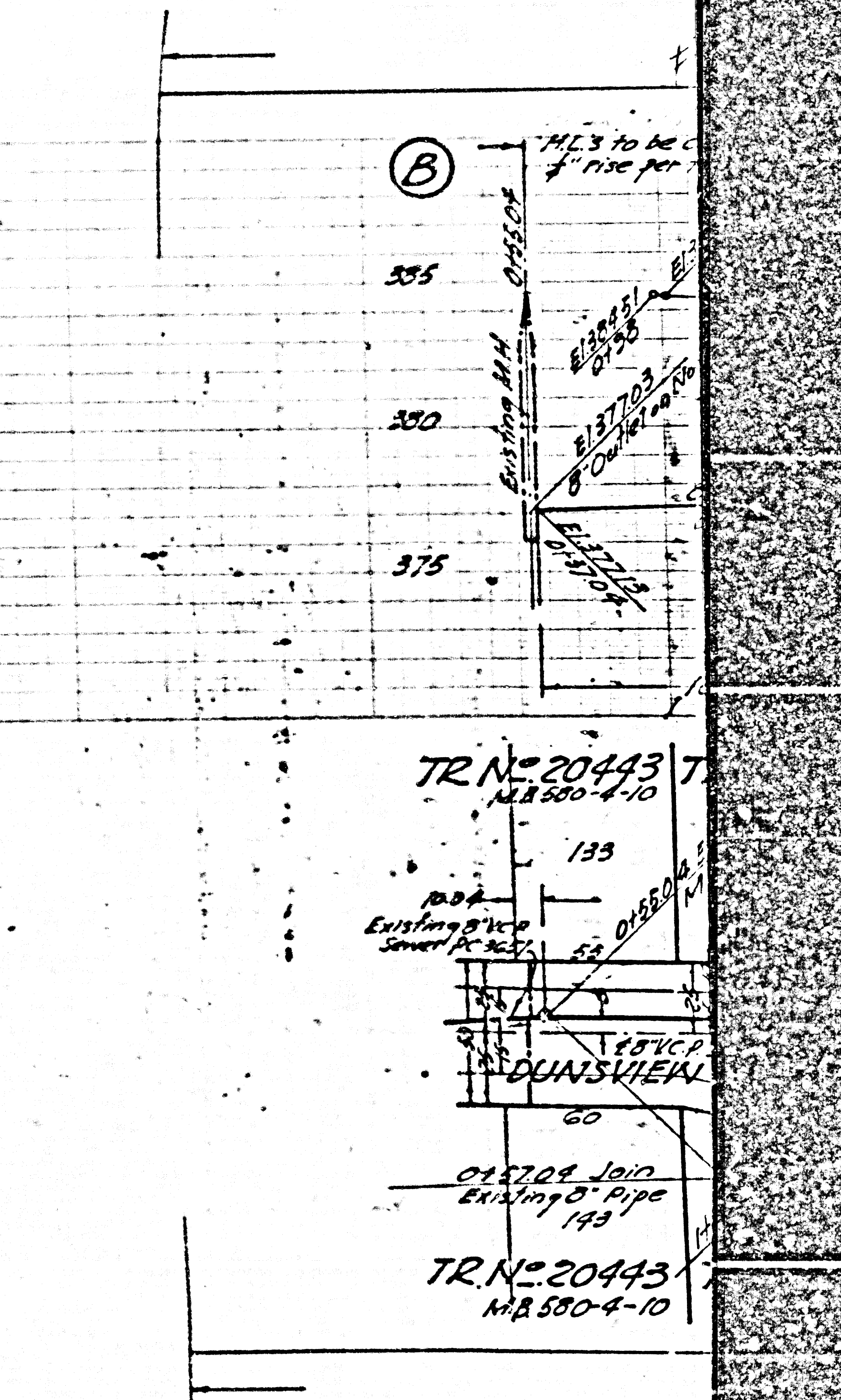
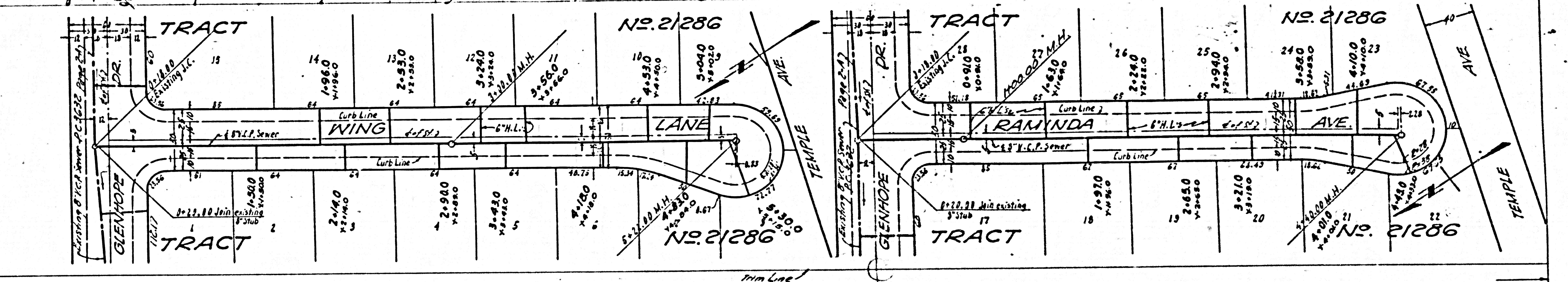
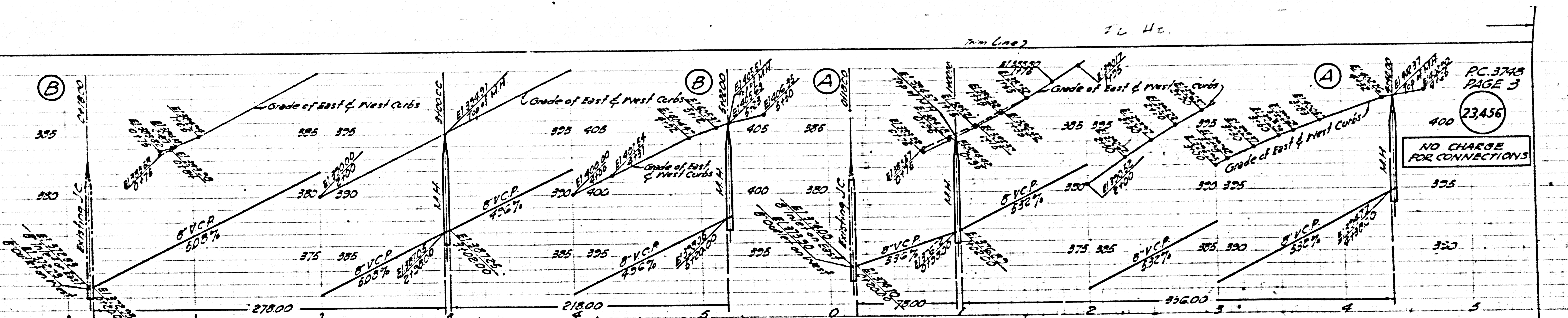
TRACT No. 21286

PC. 3748

NO CHARGE
FOR CONNECTIONS

23455

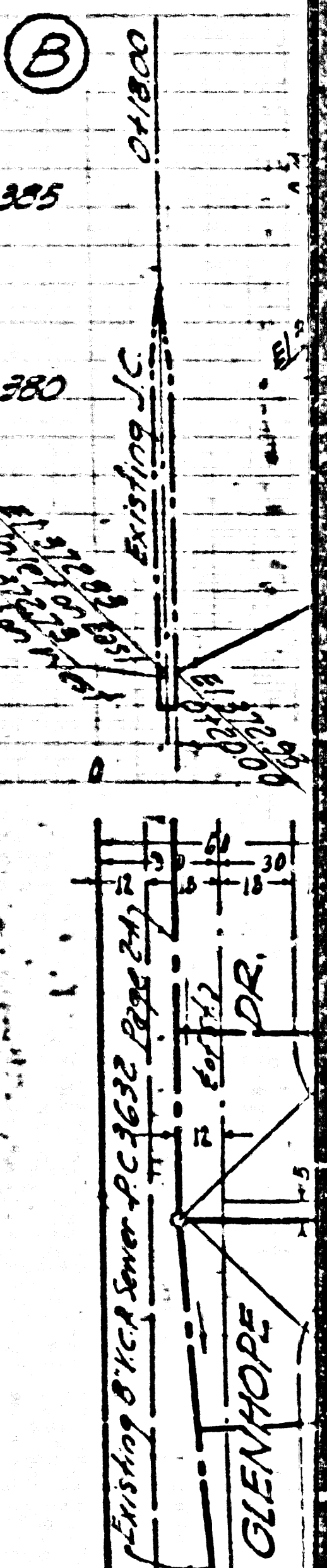
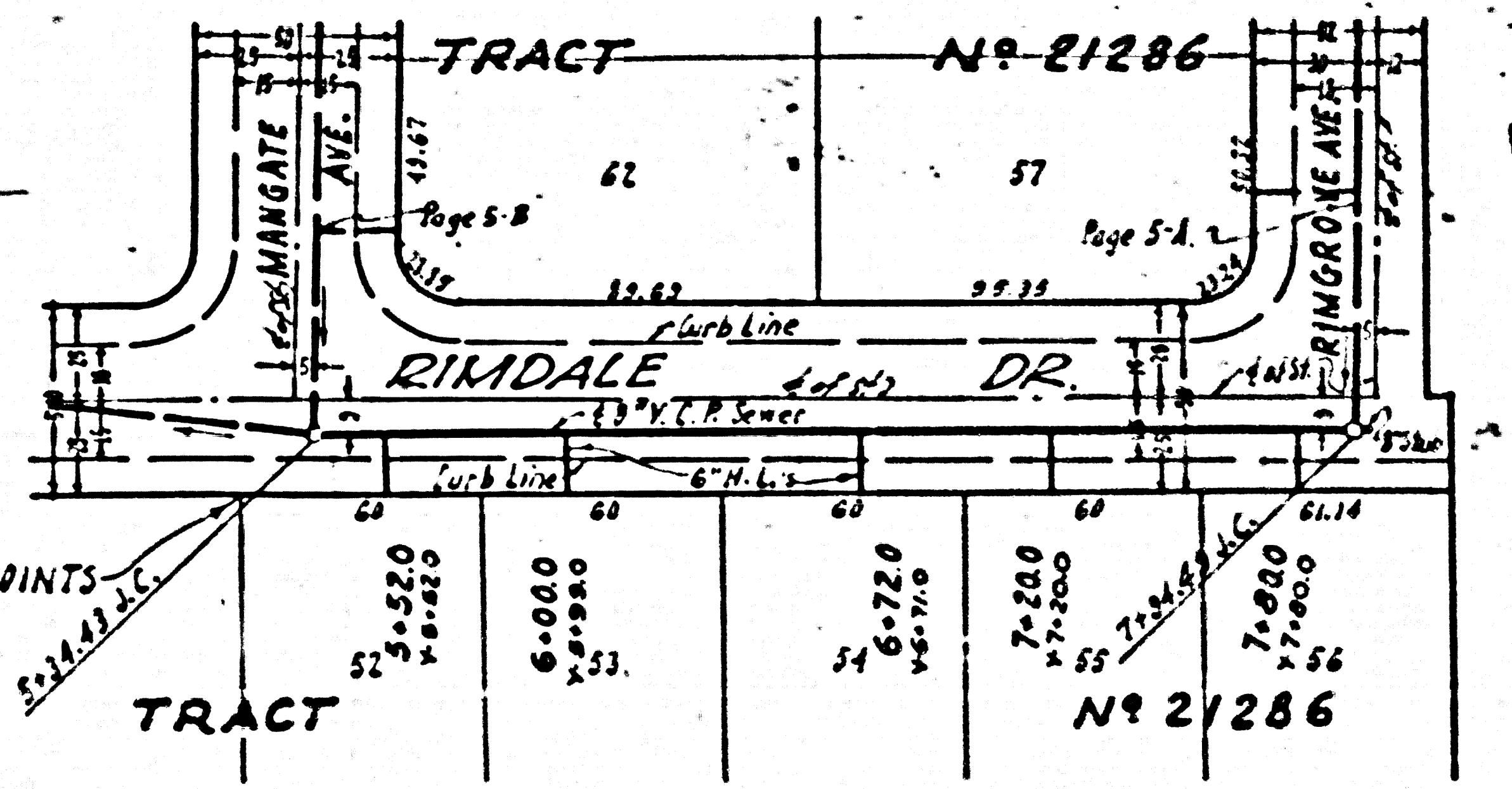
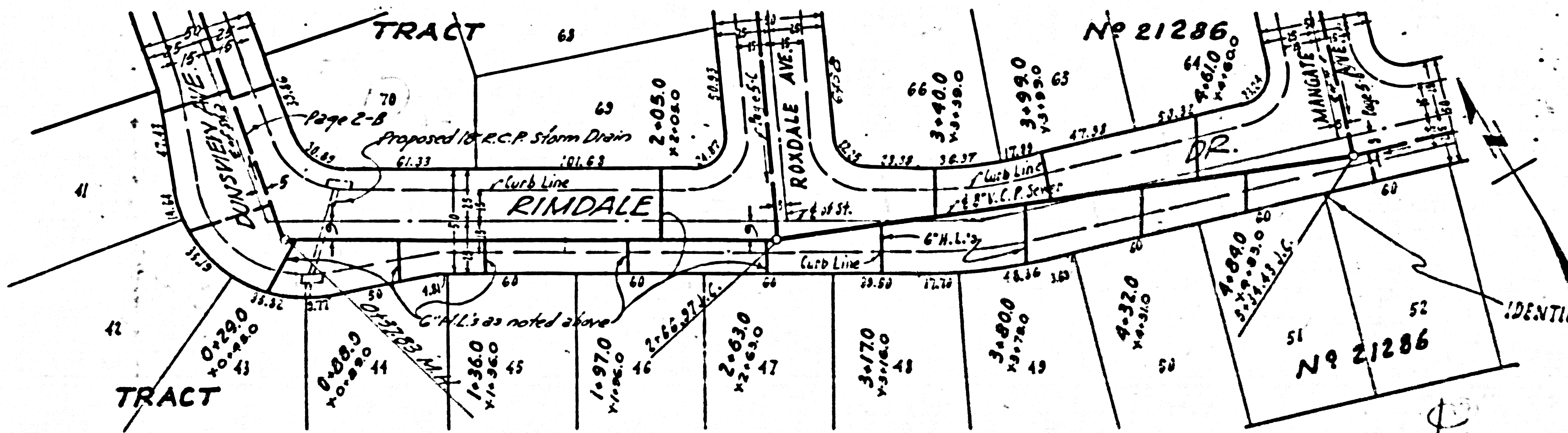
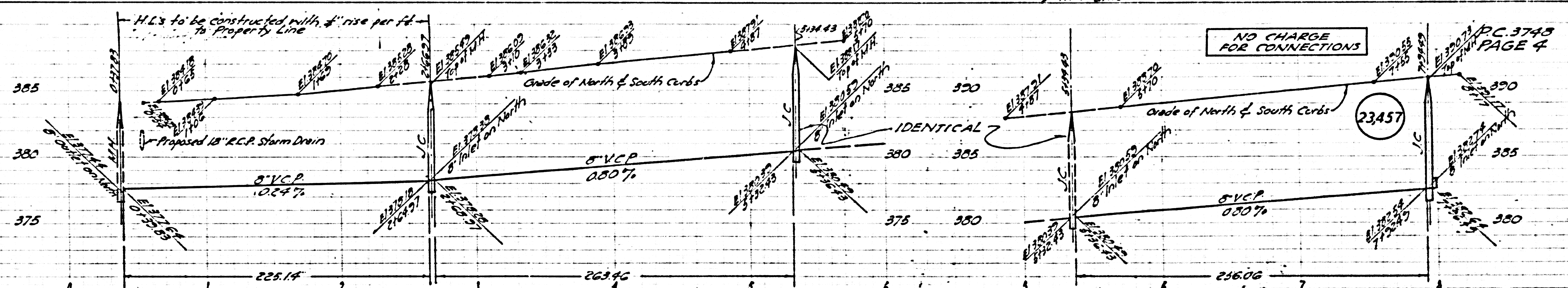




PC. 3745
PAGE 3

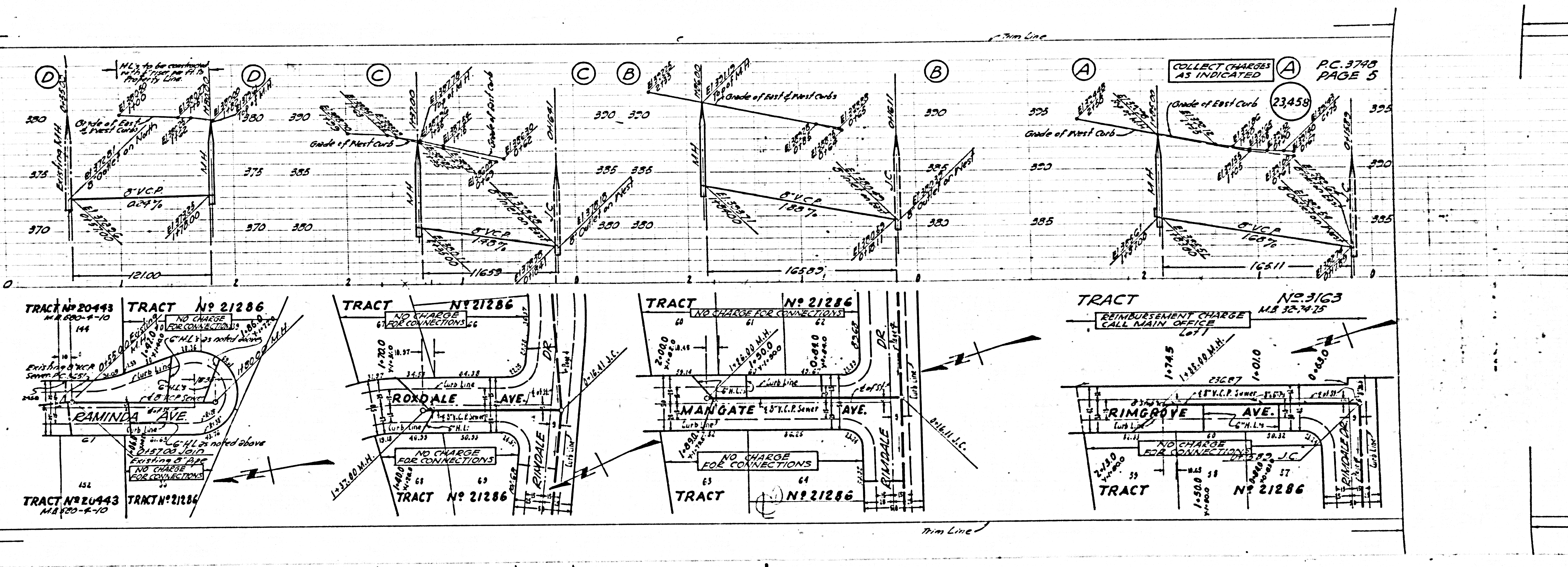
TR N. 20443
M.B. 580-4-10

TR N. 20443
M.B. 580-4-10



PC 3743

PC



COLLECT CHARGES AS INDICATED

A

PC 3743 PAGE 5

23458

REIMBURSEMENT CHARGE CALL MAIN OFFICE (LFT)

NO CHARGE FOR CONNECTIONS

NO CHARGE FOR CONNECTIONS

NO CHARGE FOR CONNECTIONS

NO CHARGE FOR CONNECTIONS