

PC. 3758
PAGE 2

NO CHARGE FOR
CONNECTIONS

22,111

335

330

328

325

320

315

310

305

300

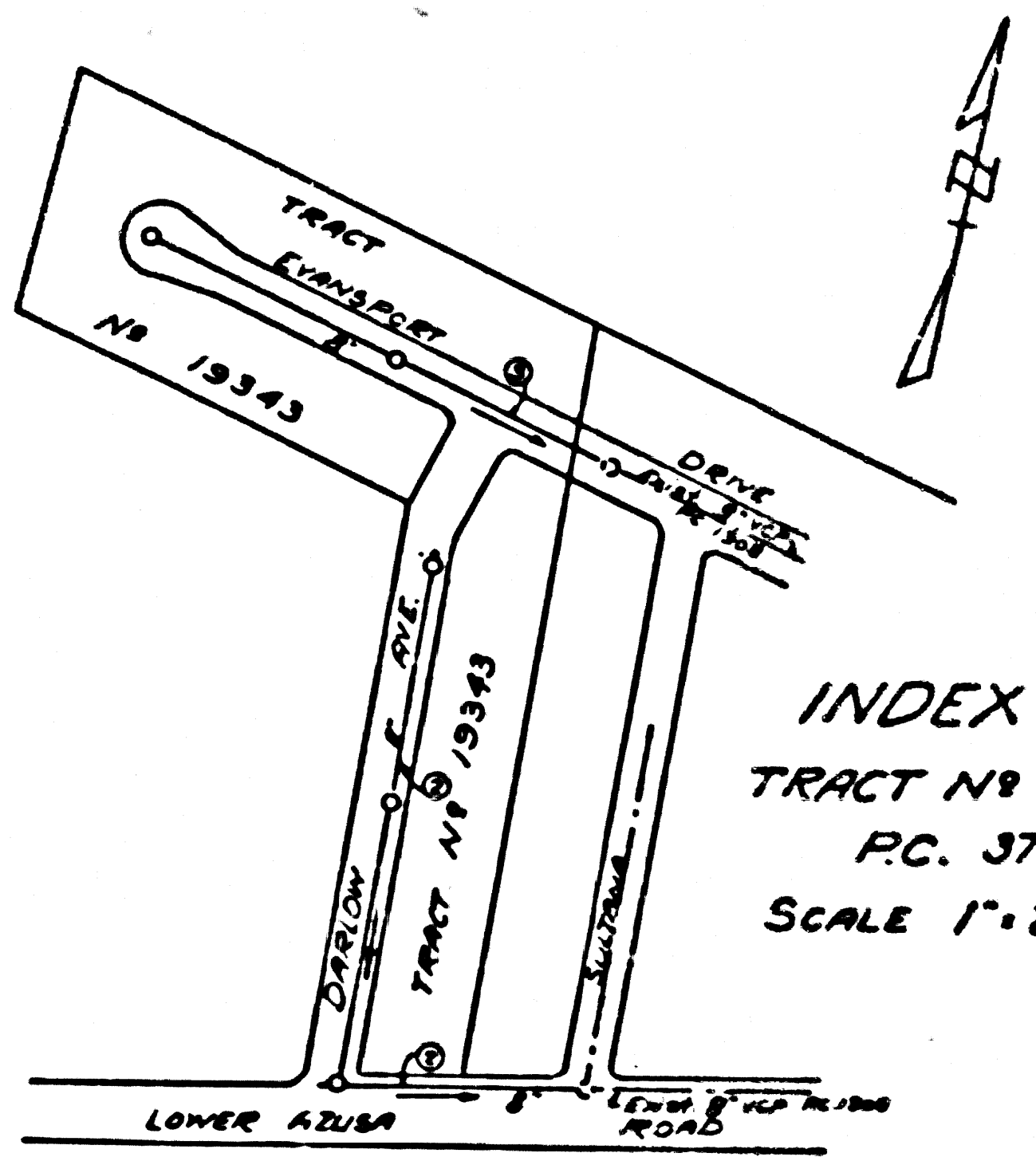
295

290

285

280

B.M.
Mission Drive & Rosemead Blvd. (N Side) on the E
of Mission Dr. 50' West of R.P. in a well cut thru
the pvt. protected by a cast iron cover marked
C.S.M. F.B. 1583-8 Elev. 332.218



INDEX MAP
TRACT NO 19343
P.C. 3758
SCALE 1"=200'

SHEET NO	PAGES
1	1-3

NO CHARGE FOR
CONNECTIONS
L. Carter 12-5-55

Trim line 7

TEMPLE CITY BLDG. DIST. NO 5

- NOTE:
- Provide stakes on the property lines or property lines produced at right angles to the sewer line at the center line of each manhole.
 - No representative of the County Engineer will survey or layout any portion of the work.
 - The owner or his authorized representative shall furnish the County Engineer with grade sheets and stations for all house laterals and Y branches and shall provide stakes for them at their proper locations with stationing plainly marked. Any change in location shall be requested in writing by the owner or his representative.
 - No revisions shall be made in these plans without the approval of the County Engineer.
 - Use standard manhole frames and covers, S-a-117.
 - Use standard strength pipe except as noted.
 - Use cement mortar for all vitrified clay pipe joints.
 - Resurface all trench within paved area to meet L.A. County Road Dept. or California State Highway Dept. requirements in accordance with permit.
 - Encase four feet of sewer at points of interference with poles, S-a-119.
 - House laterals to be constructed with inverts at property line \dots $\frac{1}{2}$ feet below curb grade except as noted.
 - All structures shall be brick sewer structures, S-a-104.
 - For allowable leakage test, use Formula No. \dots Spec's, Sec. 51.
 - Manhole tops in unimproved Rights Of Way to be 6" above finish grade.

PC. 3758
PAGE 1

PROFILE, ALIGNMENT AND GRADE OF
SANITARY SEWERS
TO BE CONSTRUCTED IN

TRACT NO 19343

22,110

PRIVATE CONTRACT NO. 3758

W. S. 44

1 SHEET

Scale: VERT. 1"=4' HORIZ. 1"=40'

NOV 1955

PREPARED IN THE OFFICES OF
TREADWELL ENGINEERING CORPORATION

W. A. Treadwell
Eng. C.E. No. 410

FOR LEGEND SEE PLAN NO. S-a-64

NOTE:
Grades in which this improvement is to be constructed are shown on plans and profiles. Grade points for top of curbs, center line of streets, or center line of alleys are shown by circles on profiles. At all points between designated points the grade shall be established so as to conform to a straight line drawn between said designated points.
Elevations are in feet above U.S.G.S. datum or mean sea level.
This drawing and the data hereon are hereby made a part of the specifications.
Work shall be constructed according to specifications on file in the office of the County Engineer and shall be prosecuted only in the presence of the County Engineer.
Before work can be started, the contractor must obtain a permit to excavate in County streets from the L.A. County Road Dept., 108 W. 2nd St. and make a deposit with the County Engineer, 733 Room 324, 253 S. Broadway, sufficient to cover the cost of construction inspection and record plans.
Approval of this plan by the County of Los Angeles does not constitute a representation as to the accuracy of the location of or the existence or non-existence of any underground utility, pipe, or structure within the limits of this project. This note applies to all sheets.
If work is to be done at a Street Highway, a permit must be obtained from the State of California, Division of Highways, 120 South Spring Street.

COUNTY OF LOS ANGELES, CALIFORNIA

Approved, John R. Lambis, County Engineer Approved, A. M. Reason

O. P. Collins
Engineer

Checked by: R. K. ... 12-6-55
Office of County Engineer, Dep. C. E. No. 7860

Checked 1-10-56 W. ...

Trim line

TRACT NO 19343

PC. 3758
PAGE 1

P.C. 3758
PAGE 3

NO CHARGE FOR
CONNECTIONS

22,112

P.C. 3758
PAGE 2

NO CHARGE FOR
CONNECTIONS

22,111

