

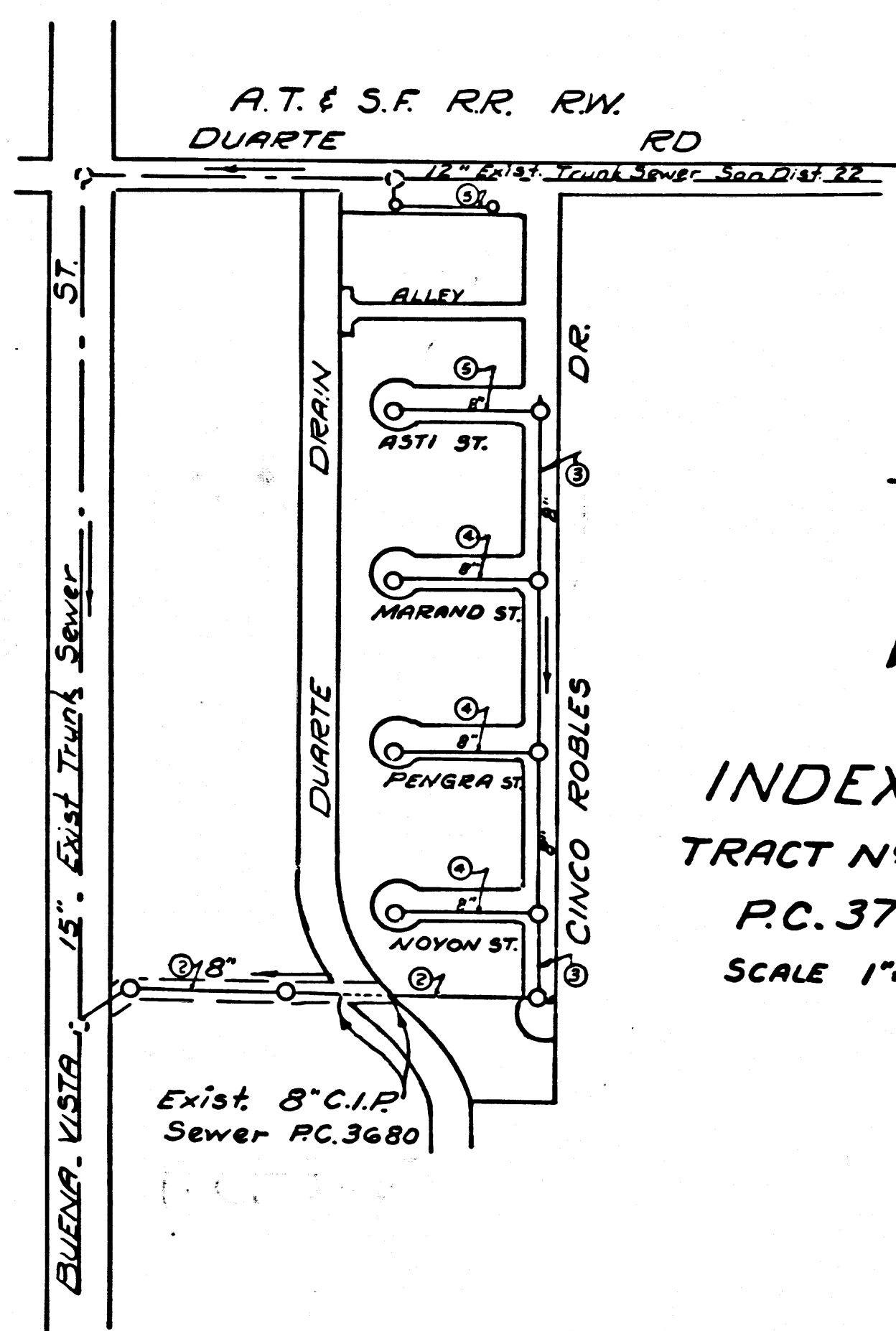
B.M. # 9 S.G. 188 per LQ 927 PK. nail & Copper tag set in lead of S.W. corner of concrete base of Railroad Crossing Signal at N.E. corner of Buena Vista Ave. & Duarte Road. Elev. 458.75

Trim Line
TEMPLE CITY BUILDING DIST. No 5

NOTE:

- Provide stakes on the property lines or property lines produced at right angles to the sewer line at the center line of each manhole.
- No representative of the County Engineer will survey or layout any portion of the work.
- The owner or his authorized representative shall furnish the County Engineer with grade sheets and stations for all house laterals and Y branches and shall provide stakes for them at their proper locations with stationing plainly marked. Any change in location shall be requested in writing by the owner or his representative.
- No revisions shall be made in these plans without the approval of the County Engineer.
1. Use standard manhole frames and covers, S-a-117.
 2. Use standard strength pipe except as noted.
 3. Use cement mortar for all vitrified clay pipe joints.
 4. Resurface all trench within paved area to meet L.A. County Road Dept. or California State Highway Dept. requirements in accordance with permit.
 5. Encase four feet of sewer at points of interference with poles, S-a-119.
 6. House laterals to be constructed with inverts at property line 6 feet below curb grade except as noted.
 7. All structures shall be standard precast concrete, S-a-135
 8. For allowable leakage test, use Formula No. 1, Spec's., Sec. 51.
 9. Manhole tops in unimproved Rights-Of-Way to be 6" above finish grade.

Before breaking into any existing structure
 and before final acceptance of this work,
 County Sanitation District should be notified
 in order that required inspection may be made.



SHEET No	PAGES
1	1-5

CONNECTION CHARGES
 AS INDICATED
L. Curtis 12-19-55

checked 9-4-56 *M. Warren*

PROFILE, ALIGNMENT AND GRADE OF
SANITARY SEWERS
 TO BE CONSTRUCTED IN
TRACT No 20077

P.C. 3759
 PAGE 1
 (23,401)
 (5)

PRIVATE CONTRACT NO. 3759
 W. S. 46
 1 SHEET
 Scale: VERT. 1"=4'
 HORIZ. 1"=40' NOV 1955
 PREPARED IN THE OFFICES OF
TREADWELL ENGINEERING CORPORATION

By *W. G. Treadwell Jr.*
 Reg. C. E. No. 410
 FOR LEGEND SEE PLAN NO. S-a-64

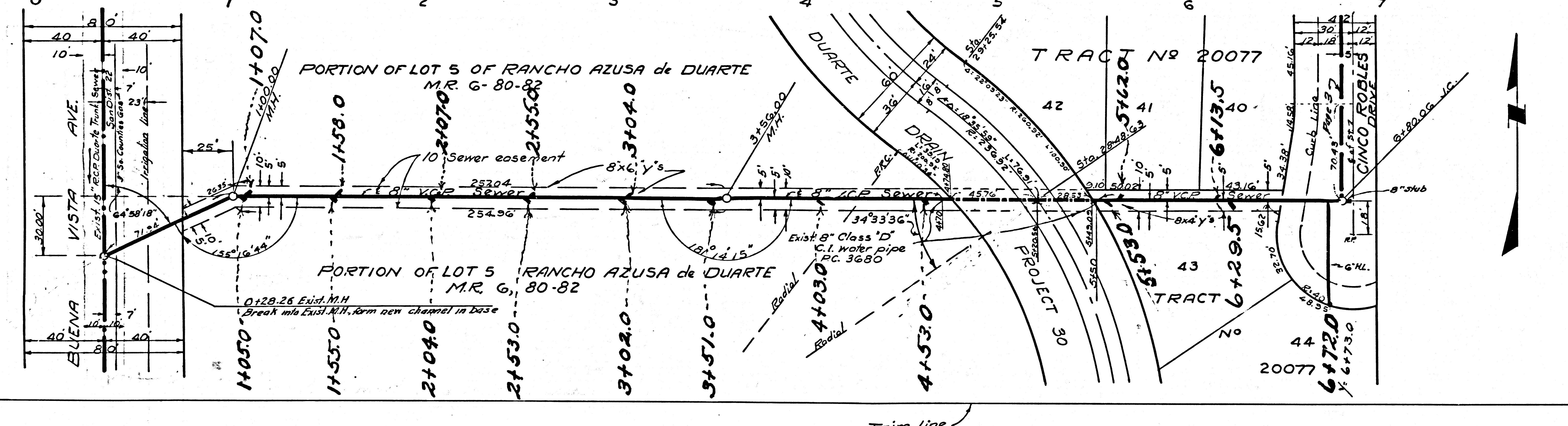
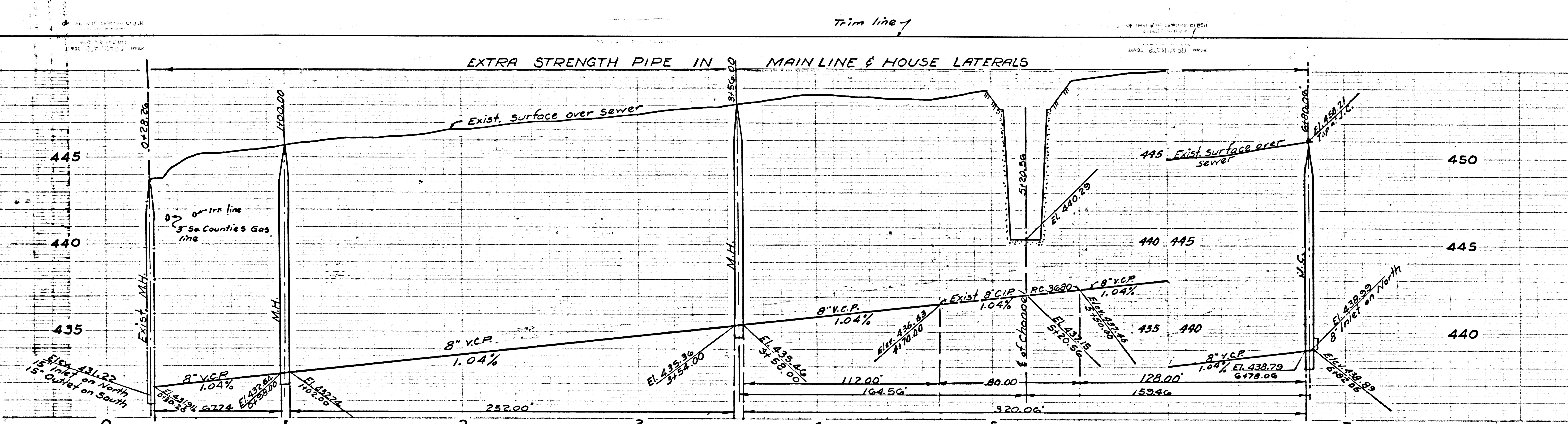
NOTE:
 Grades to which this improvement is to be constructed are shown on plans and profiles. Grade points for top of curbs, center line of streets, and center line of alleys are shown by circles on profiles. At all points between designated points the grade shall be established so as to conform to a straight line drawn between said designated points.
 Elevations are in feet above U.S.C. & G.S. Sea Level Datum of 1929.
 This drawing and the data hereon are hereby made a part of the specifications.
 Work shall be constructed according to specifications on file in the office of the County Engineer and shall be prosecuted only in the presence of the County Engineer.
 Before work can be started, the contractor must obtain a permit to excavate in County streets from the L.A. County Road Dept., 108 W. 2nd St. and make a deposit with the County Engineer, Room 324, 253 So. Broadway, sufficient to cover the cost of construction inspection and record plans.
 Approval of this plan by the County of Los Angeles does not constitute a representation as to the accuracy of the location or the existence or non-existence of any underground utility, pipe, or structure within the limits of this project. This note applies to all sheets.
 If work is to be done in a State Highway, a permit must be obtained from the State of California, Division of Highways, 120 South Spring Street.

COUNTY OF LOS ANGELES, CALIFORNIA
 Approved, *John R. Lambie*, County Engineer
 Approved, A. M. Rawm
 CHIEF ENGR. TO SAN. DIST. NO. 22
 By *A. P. Collins*, Sanitation Engineer
 By *L. J. ...*, Office Engineer
 Checked by: *R. ...* 12-21-55
 Office of County Engineer, Reg. C. E. No. 7860

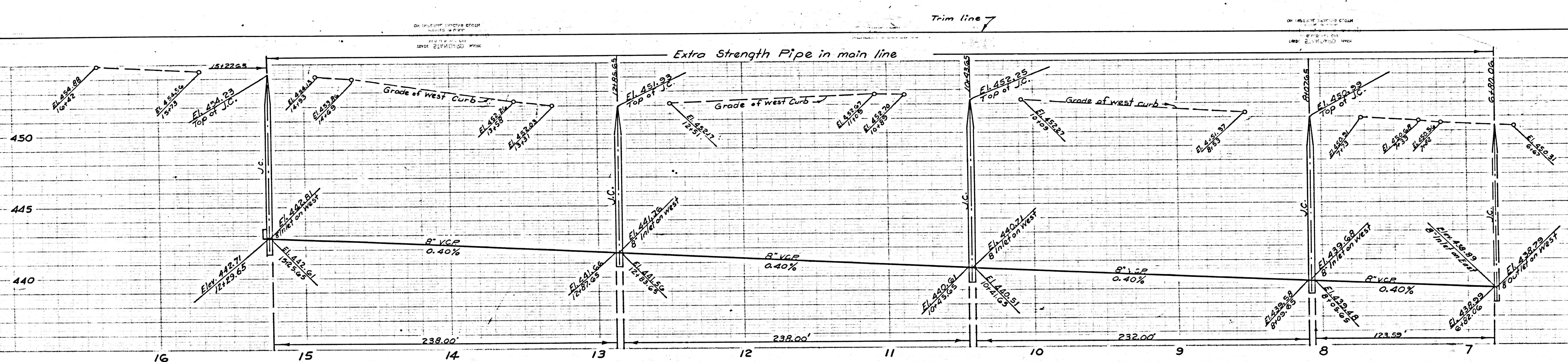
R.L.

No Charge For
Connections

23,402



23,403

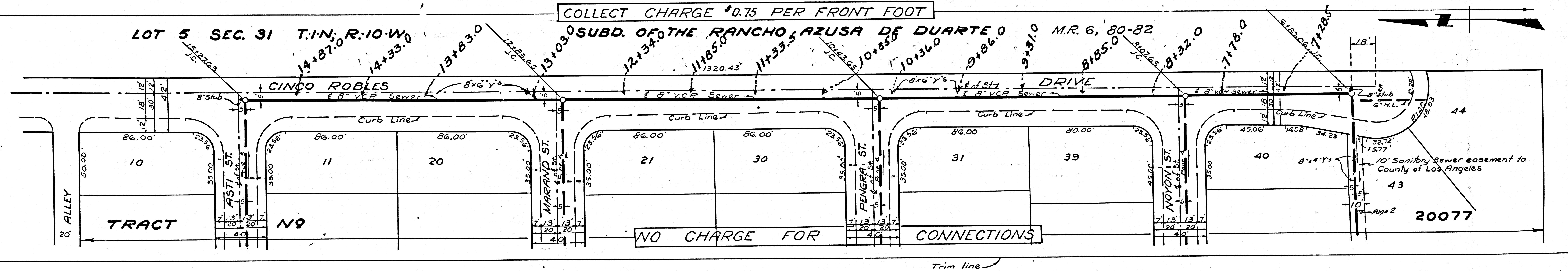


COLLECT CHARGE \$0.75 PER FRONT FOOT

LOT 5 SEC. 31 T.1N. R.10.W.

SUBD. OF THE RANCHO AZUSA DE DUARTE

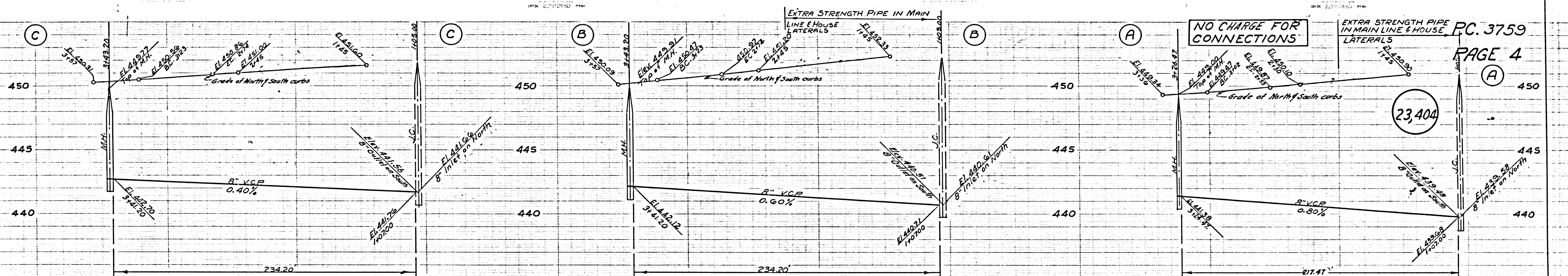
M.R. 6, 80-82



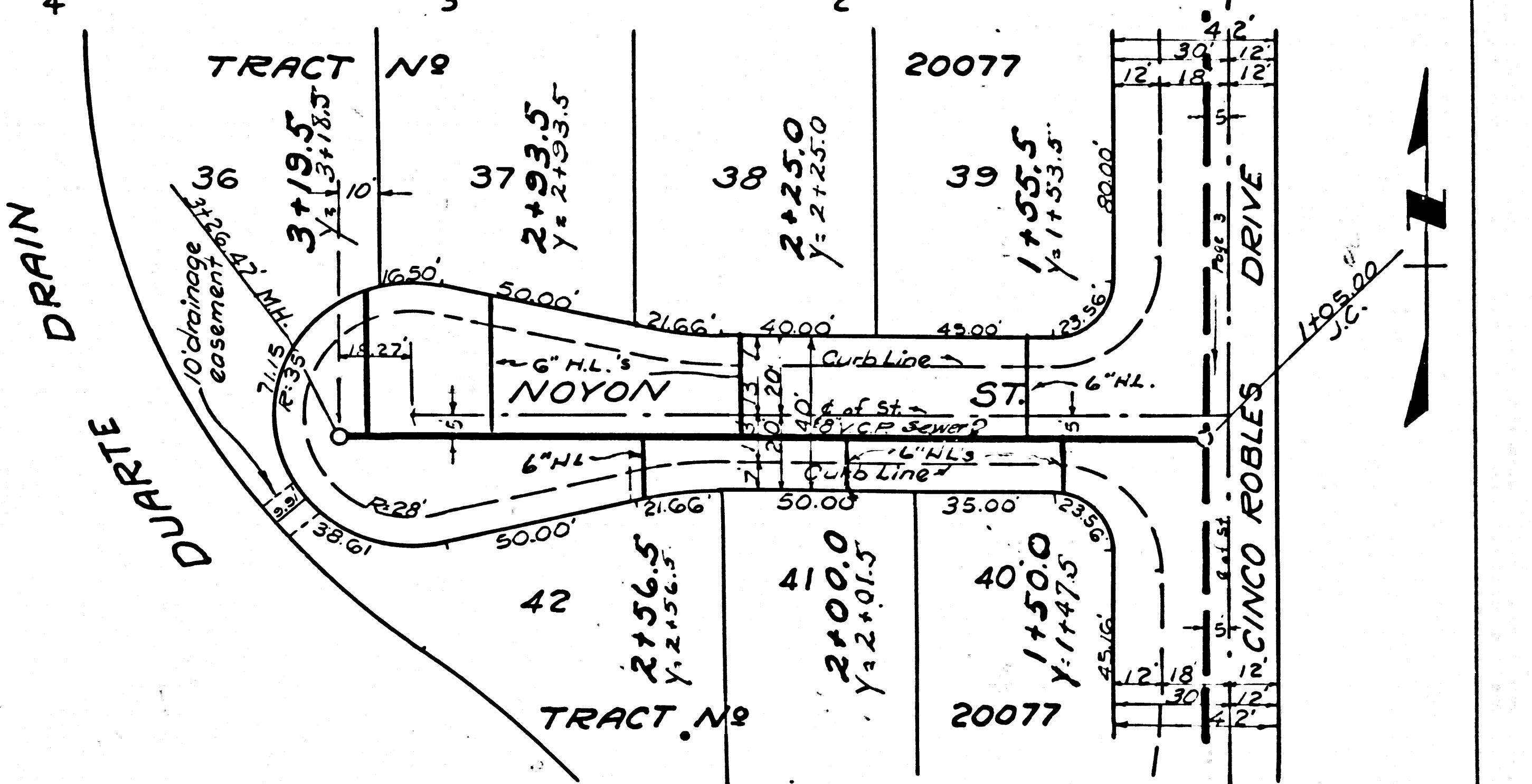
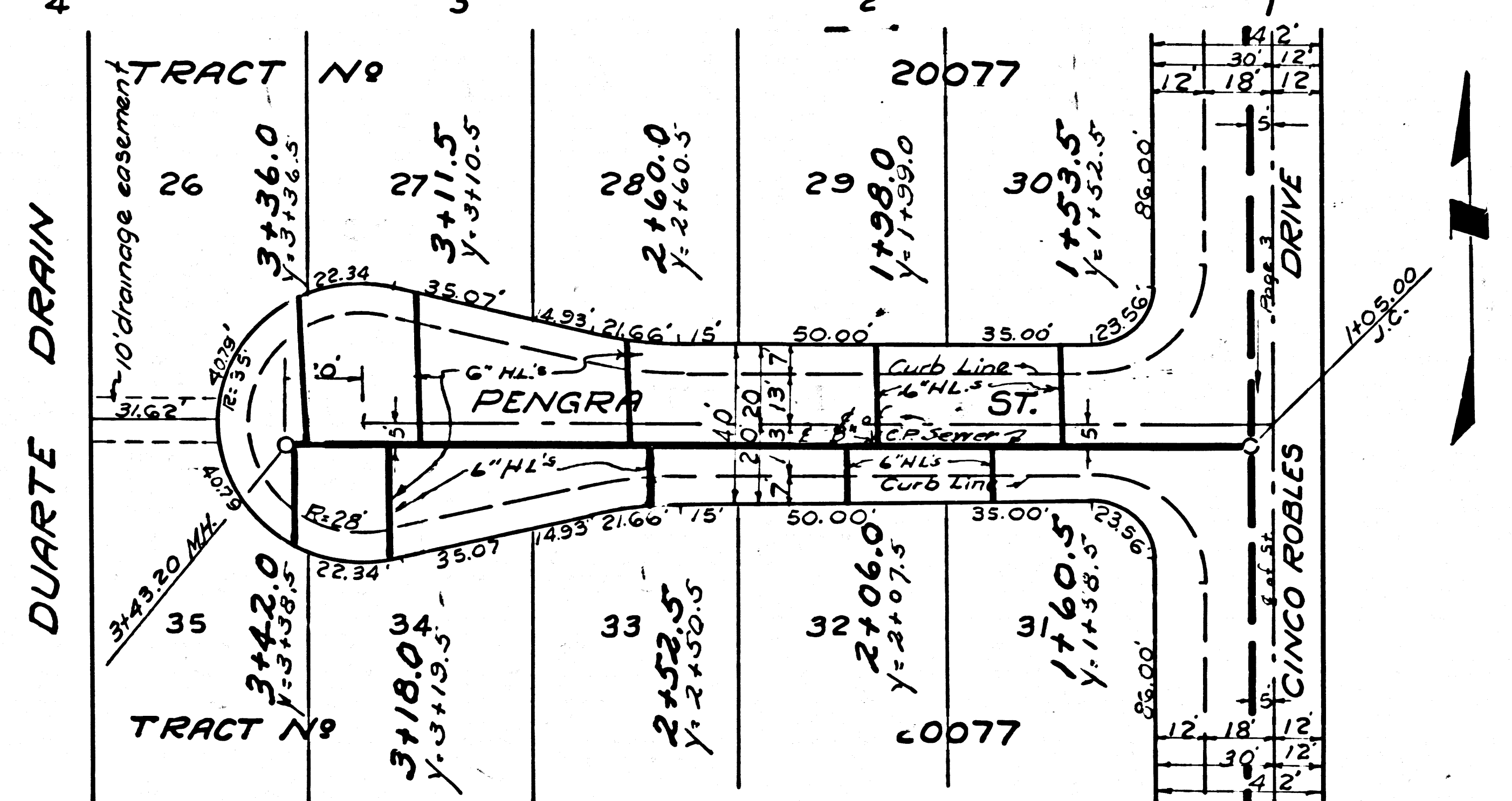
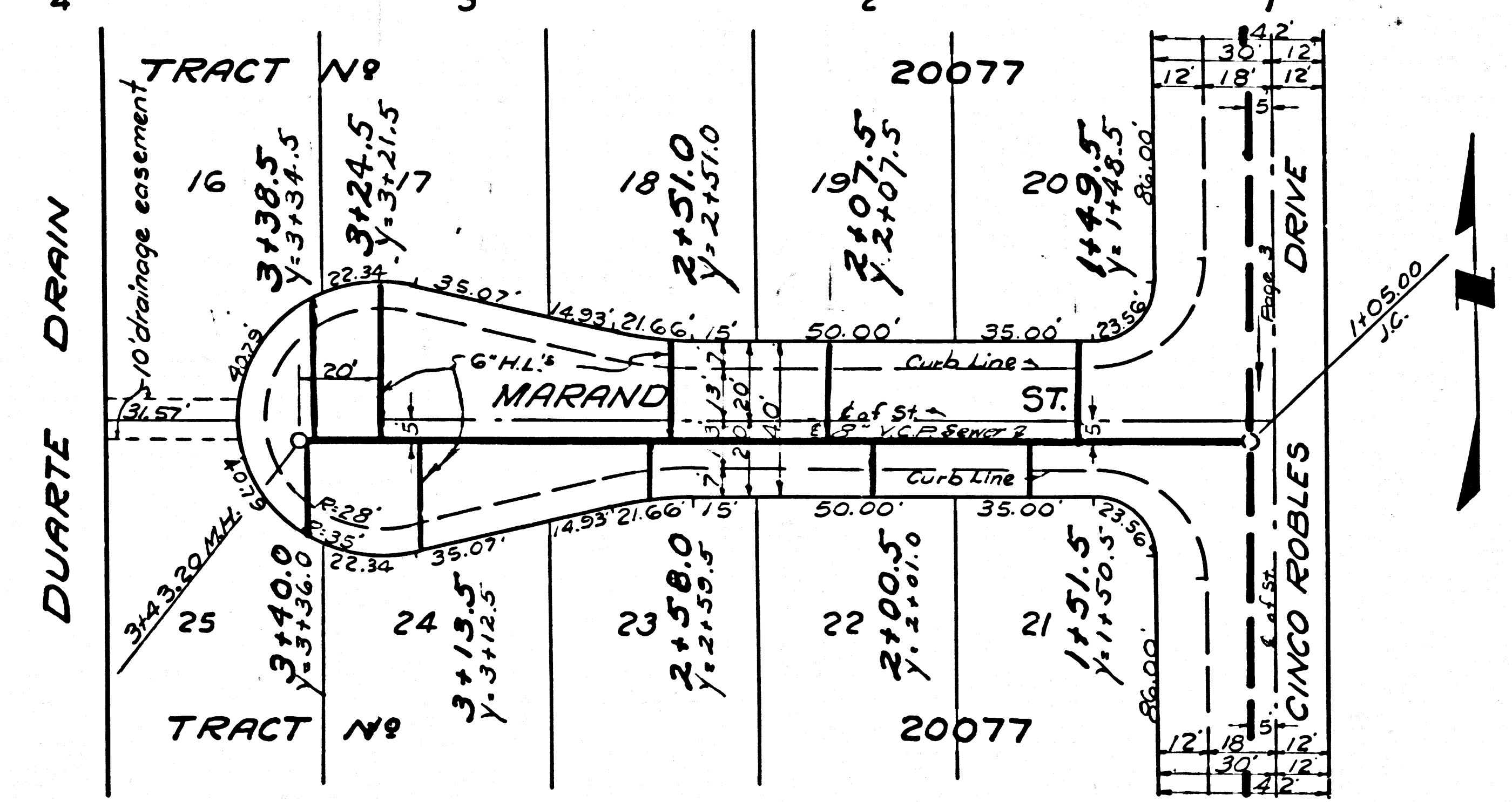
NO CHARGE FOR CONNECTIONS

20077

10' Sanitary Sewer easement to County of Los Angeles

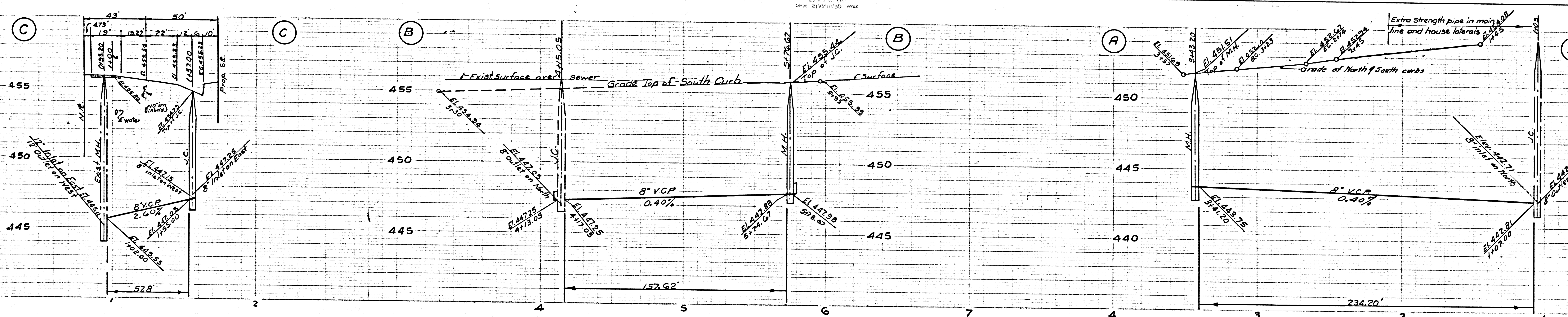


NO CHARGE FOR CONNECTIONS
 EXTRA STRENGTH PIPE IN MAIN LINE & HOUSE LATERALS
 PC. 3759
 PAGE 4
 (23,404)

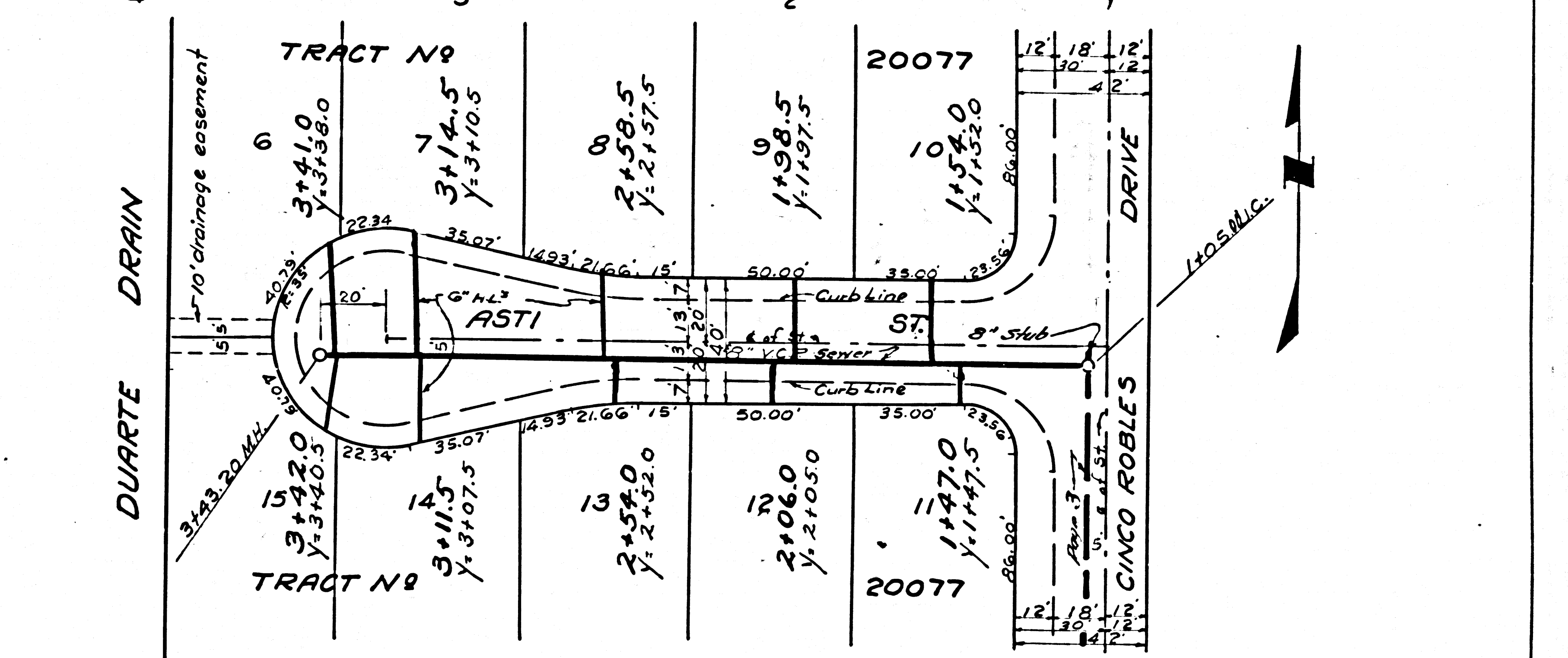
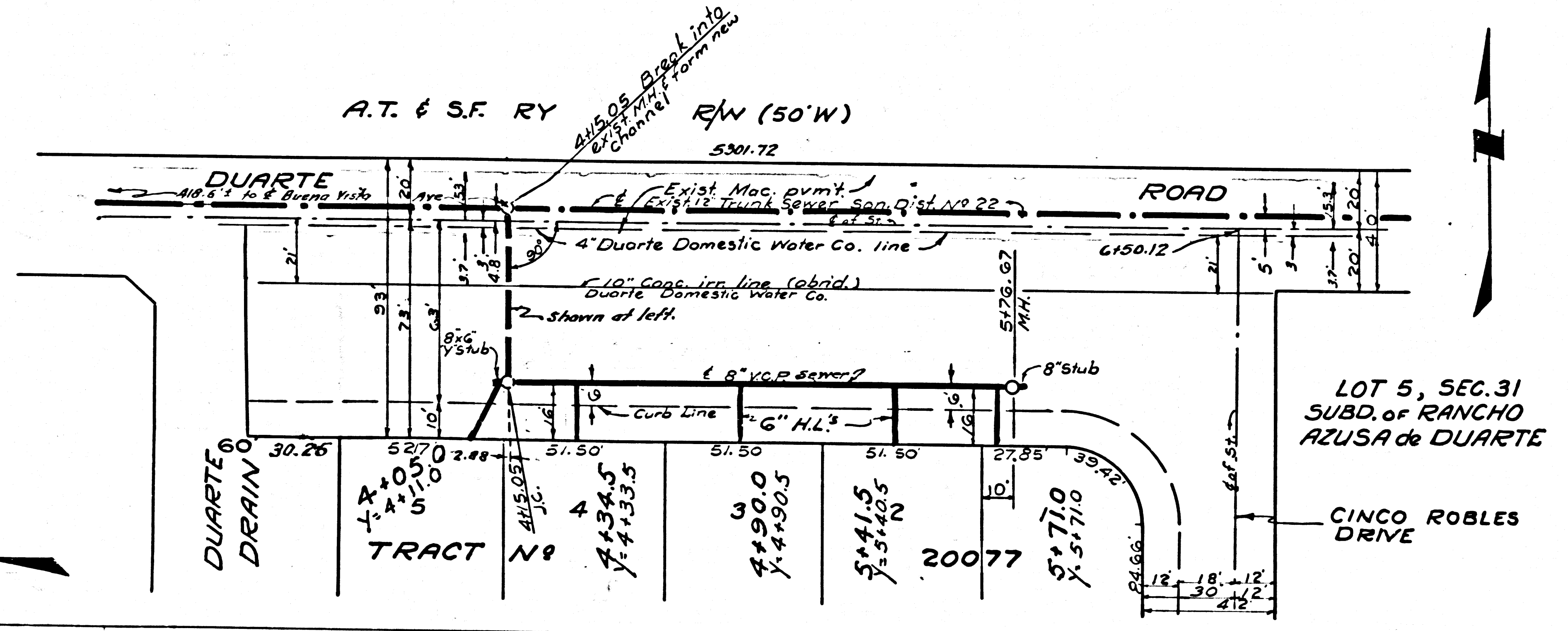
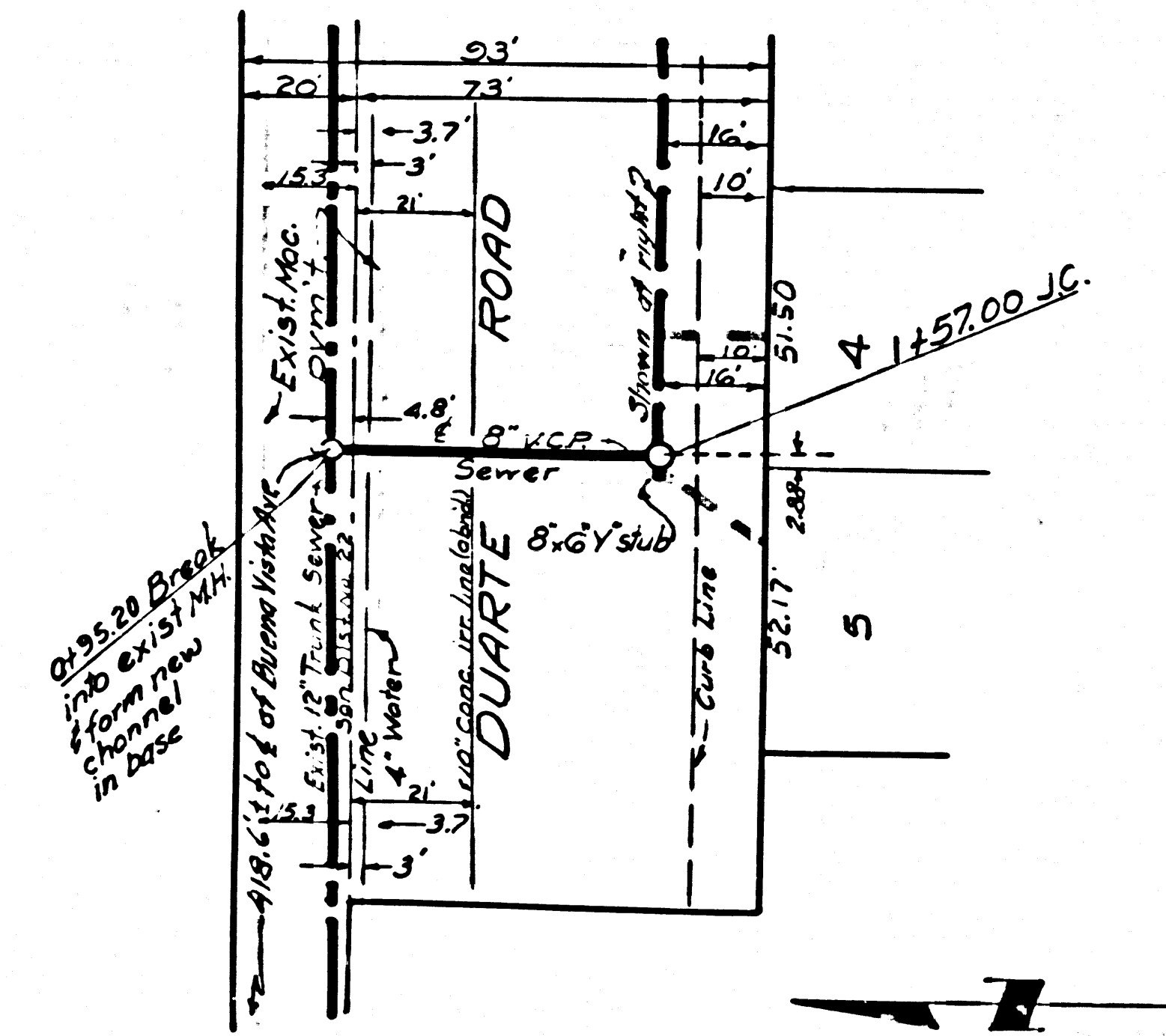


Trim line

Trim line



P.C. 3759
 PAGE 5
 No Charge For Connections
 23,405



Trim line