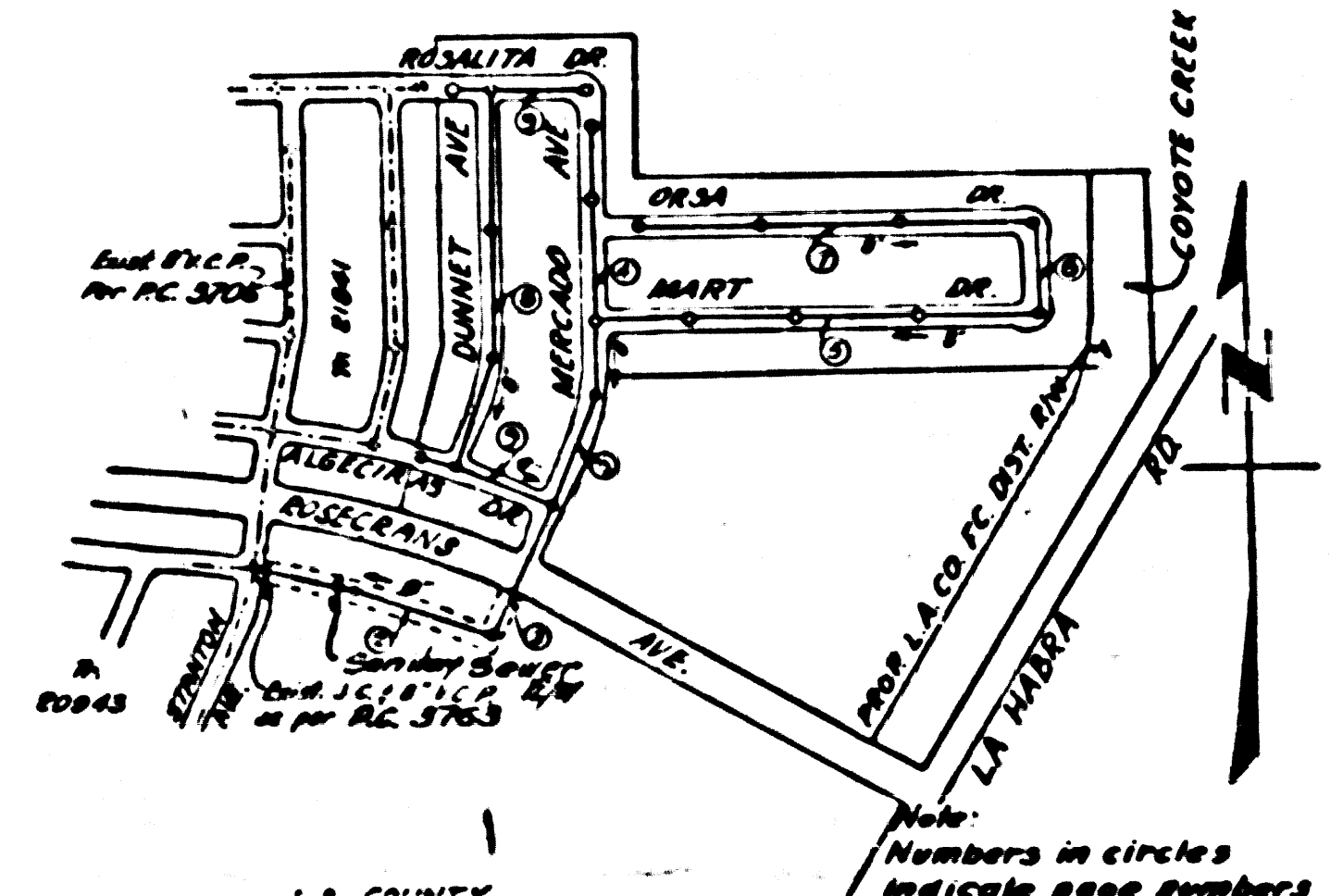


Bench Mark: Co. Surv. F.D. 1204-6 1932 Adj. Elev. 109.862
 Stage Rd. and Luitwieler Ave., A 3rd County Surveyor Monument
 marked "E.P. 23" set in concrete 18" below the surface of the intersection
 of the center line of Luitwieler Ave. & the center line of Alondra Blvd.
 in a well cut through the pavement & protected by a cast iron cover
 marked "County Surveyor Monument."



INDEX MAP
 Scale 1"=600'
 TRACT N° 21383
 P.C. 3761

SHEET	PAGES
1	1-4
2	5-9

NORWALK BLDG. DIST. N° 42

- NOTE:**
 Provide stakes on the property lines or property lines produced at right angles to the sewer line at the center line of each manhole.
 No representative of the County Engineer will survey or layout any portion of the work.
 The owner or his authorized representative shall furnish the County Engineer with grade sheets and stations for all house laterals and Y branches and shall provide stakes for them at their proper locations with stationing plainly marked. Any change in location shall be requested in writing by the owner or his representative.
 No revisions shall be made in these plans without the approval of the County Engineer.
1. Use standard manhole frames and covers, S-a-117.
 2. Use standard strength pipe except as noted.
 3. Use cement mortar for all vitrified clay pipe joints.
 4. Resurface all trench within paved area to meet L.A. County Road Dept or California State Highway Dept. requirements in accordance with permit.
 5. Encase four feet of sewer at points of interference with poles, S-a-119.
 6. House laterals to be constructed with inverts at property line... 8" ... feet below curb grade except as noted.
 7. All structures shall be brick sewer structures, S-a-104.
 8. For allowable leakage test, use Formula No. 1, Spec's., Sec. 54.
 9. Manhole tops in unimproved Rights-Of-Way to be 6" above finish grade.
 10. The contractor shall satisfy himself of all substructures and shall be responsible for their location.
 - 10a. No construction will be permitted in filled areas unless acceptable certification is submitted to the construction Division of the County Engineers Department that compaction is greater than 80%.
 - a. If compaction is less than 80% the sewer must be cradled per S-a-164.
 - b. If compaction is greater than 80% cradling is not required. However joint compound must be substituted for cement mortar for all joints in filled areas.
 11. The Private Engineer is to furnish the House Lateral depths of the property line below the top of curb elevations for each House Lateral on the Grade Sheet.

CONNECTION CHARGES
 AS INDICATED
 71. 201.7700
 12-18-66

THE LINE 7

PROFILE, ALIGNMENT AND GRADE OF
SANITARY SEWERS
 TO BE CONSTRUCTED IN
TRACT N° 21383

P.C. 3761
 Page 1
 Double Scale

24454

PRIVATE CONTRACT NO. 3761
 W. S. 34
 2 SHEETS

Scale: VERT. 1"=8'
 HORIZ. 1"=40' SEPT 1955

PREPARED IN THE OFFICES OF
MCINTIRE & QUIROS INC.

F. Quiros
 Reg. C. & No. 6503

FOR LEGEND SEE PLAN NO. S-a-64

NOTE:
 Grades to which this improvement is to be constructed are shown on plans and profiles. Grade points for top of curbs, center line of streets, or center line of alleys are shown by circles on profiles. At all points between designated points the grade shall be established so as to conform to a straight line drawn between said designated points.
 Elevations are in feet above U.S.C. & G.S. Sea level datum of 1929.
 This drawing and the data hereon are hereby made a part of the specifications.
 Work shall be constructed according to specifications on file in the office of the County Engineer and shall be prosecuted only in the presence of the County Engineer.
 Before work can be started, the contractor must obtain a permit to excavate in County streets from the L.A. County Road Dept., 108 W. 2nd St. and make a deposit with the County Engineer, 201 E. 5th Street, sufficient to cover the cost of construction inspection and record plans.
 Approval of this plan by the County of Los Angeles does not constitute a representation as to the accuracy of the location of or the existence or non-existence of any underground utility, pipe, or structure within the limits of this project. This note applies to all sheets.
 If work is to be done in a State Highway, a permit must be obtained from the State of California, Division of Highways, 120 South Spring Street.

COUNTY OF LOS ANGELES, CALIFORNIA
 Approved, John A. Lender County Engineer
 Approved, A. M. Row
A. P. Collins *A. M. Row*
 Assistant Engineer Office Engineer
 Checked by: *R. P. Huber* 12-18-66
 Office of County Engineer, Reg. C. & No. 7260

1

P.C. 3761
 TRACT N° 21383

THE LINE 7

P.C. 3761
Page 3
Double Scale

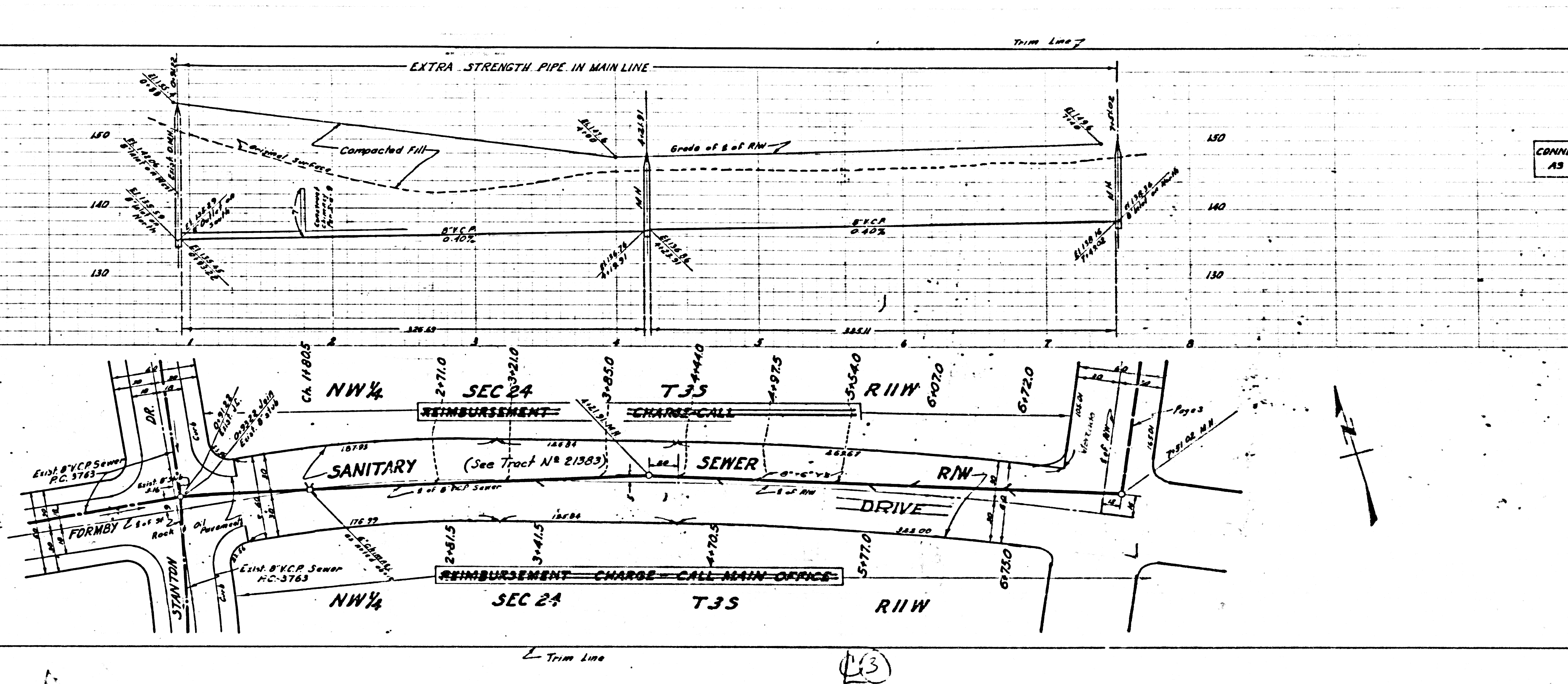
CONNECTION CHARGES
AS INDICATED

4,456

P.C. 3761
Page 2
Double Scale

CONNECTION CHARGES
AS INDICATED

2,455

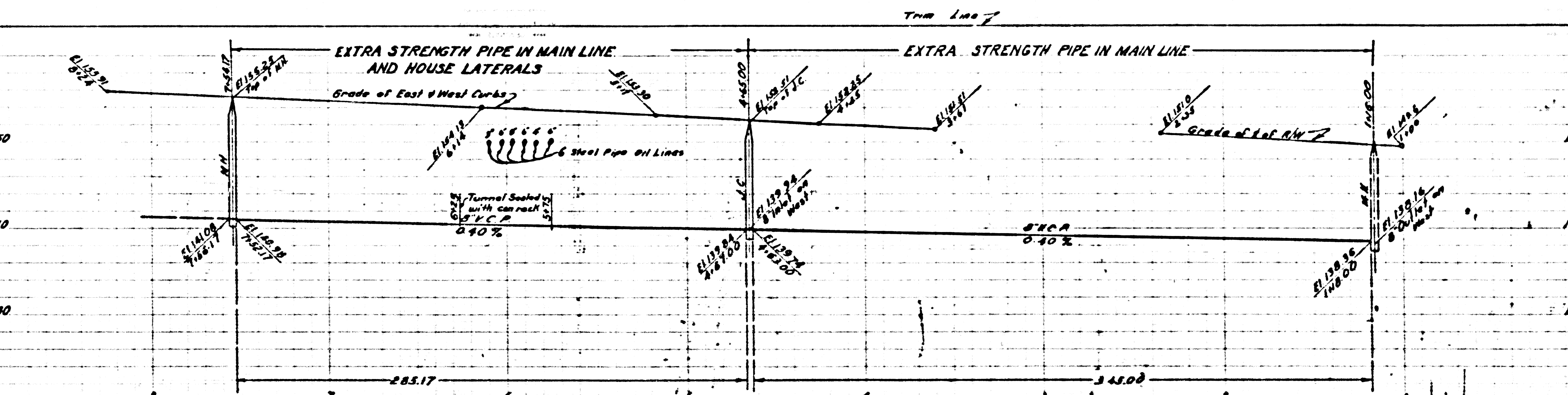


(13)

PC. 3761
Page 4
Double Scale

CONNECTION CHARGES
AS INDICATED

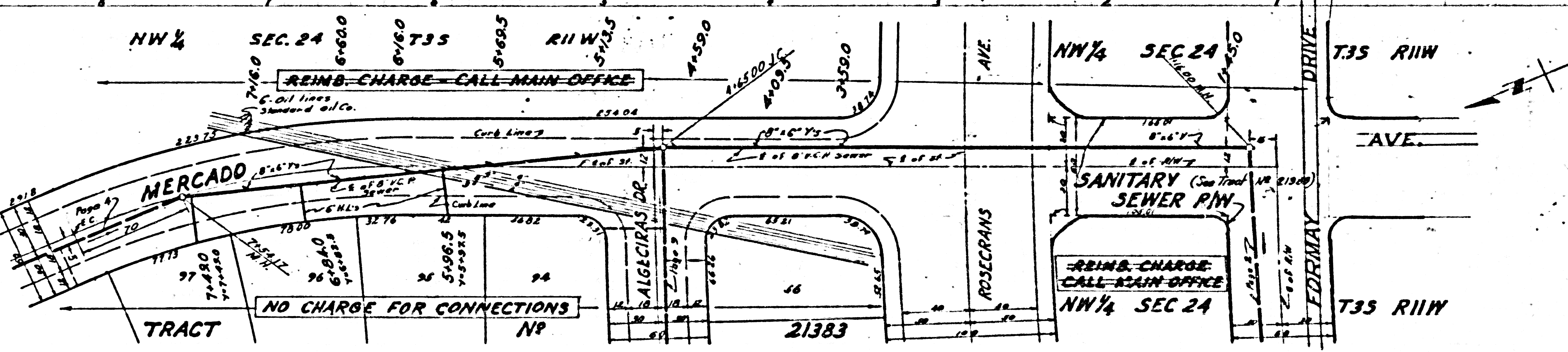
24,457



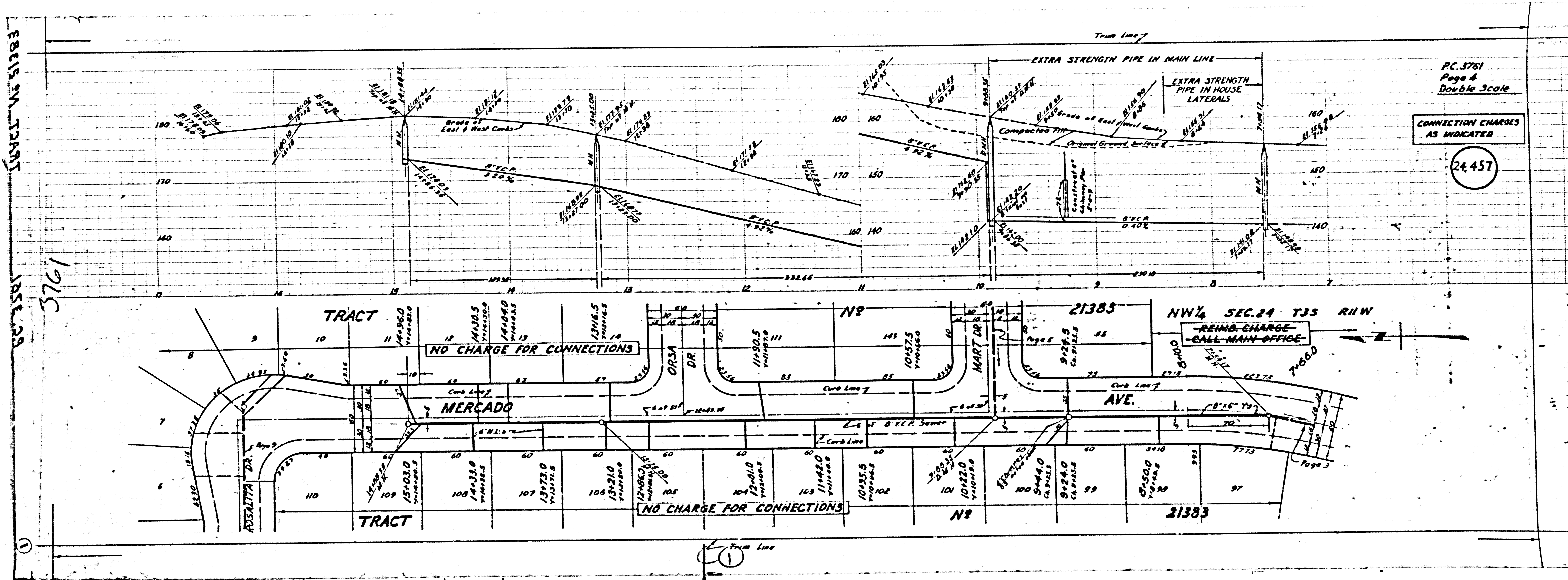
PC. 3761
Page 3
Double Scale

CONNECTION CHARGES
AS INDICATED

24,456



20



P.C. 3761
 Page 4
 Double Scale

CONNECTION CHARGES
 AS INDICATED

24.457

18515 2nd TRACT

3761

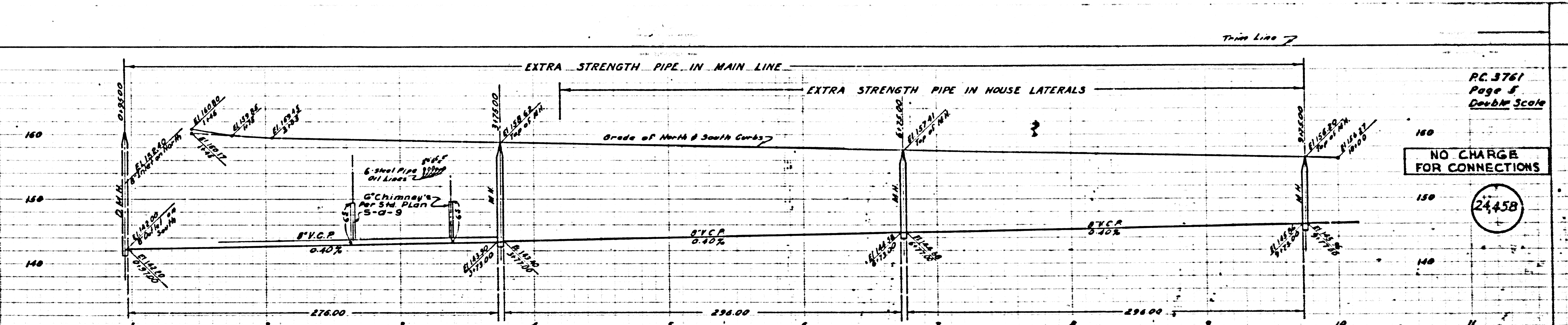
18515 2nd

1

REINO CHARGE -
 CALL MAIN OFFICE

Page 3

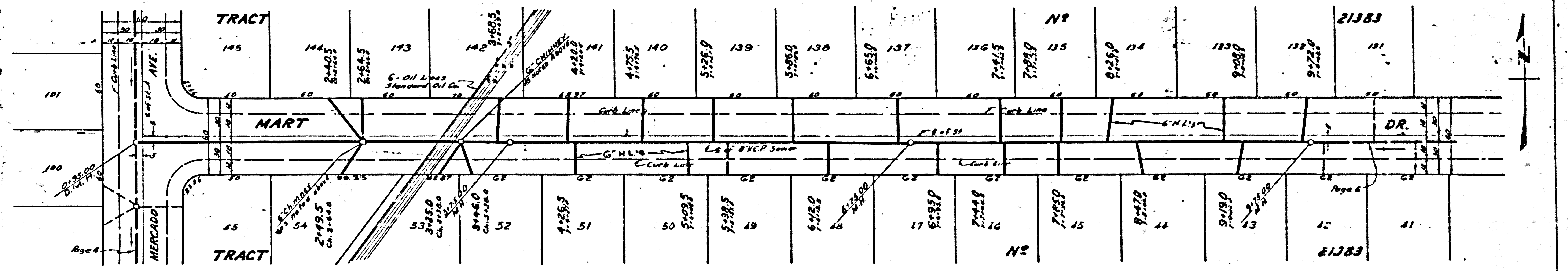
1



PC 3761
Page 5
Double Scale

NO CHARGE
FOR CONNECTIONS

24458

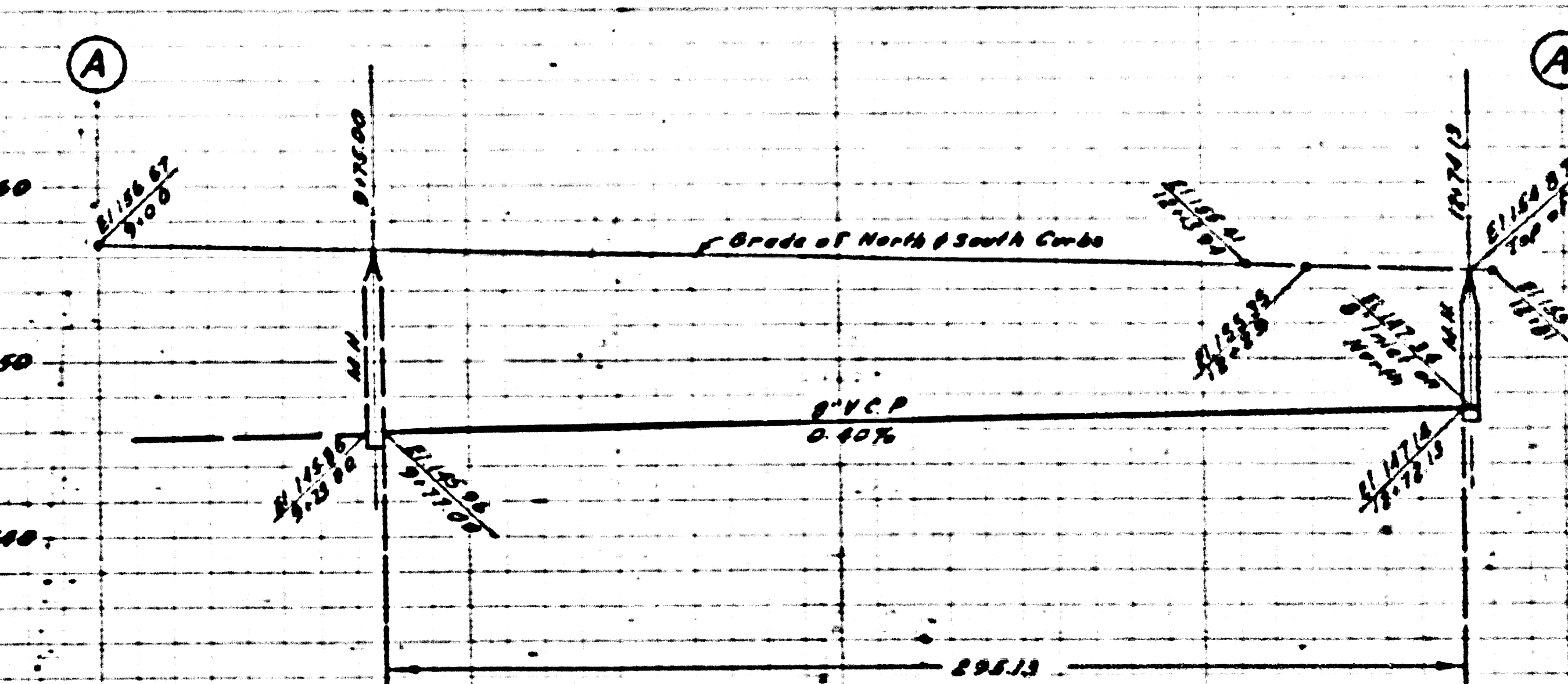
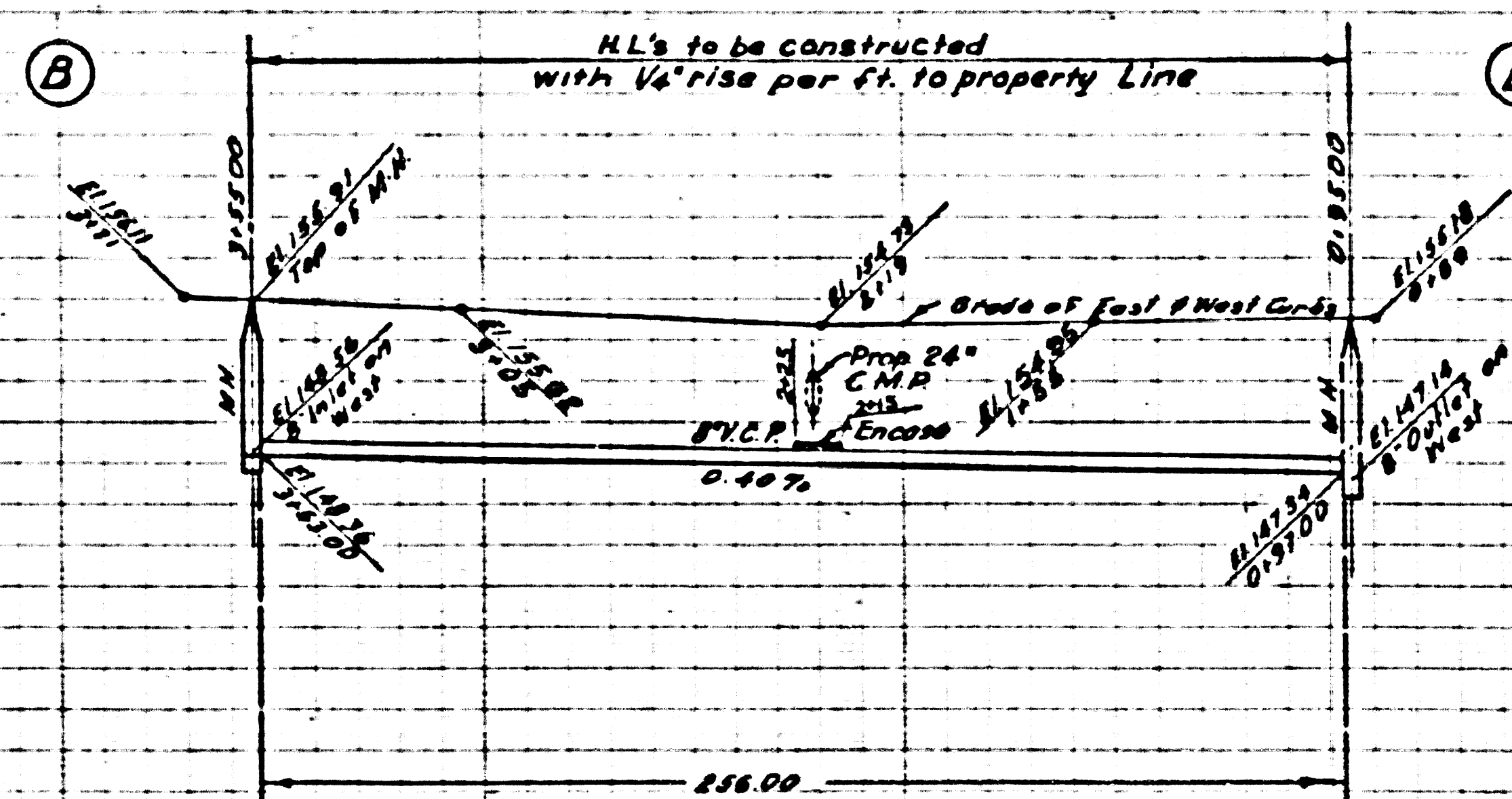


⑤

EISEN TRACT

PC 3761
Page 7
Double Scale

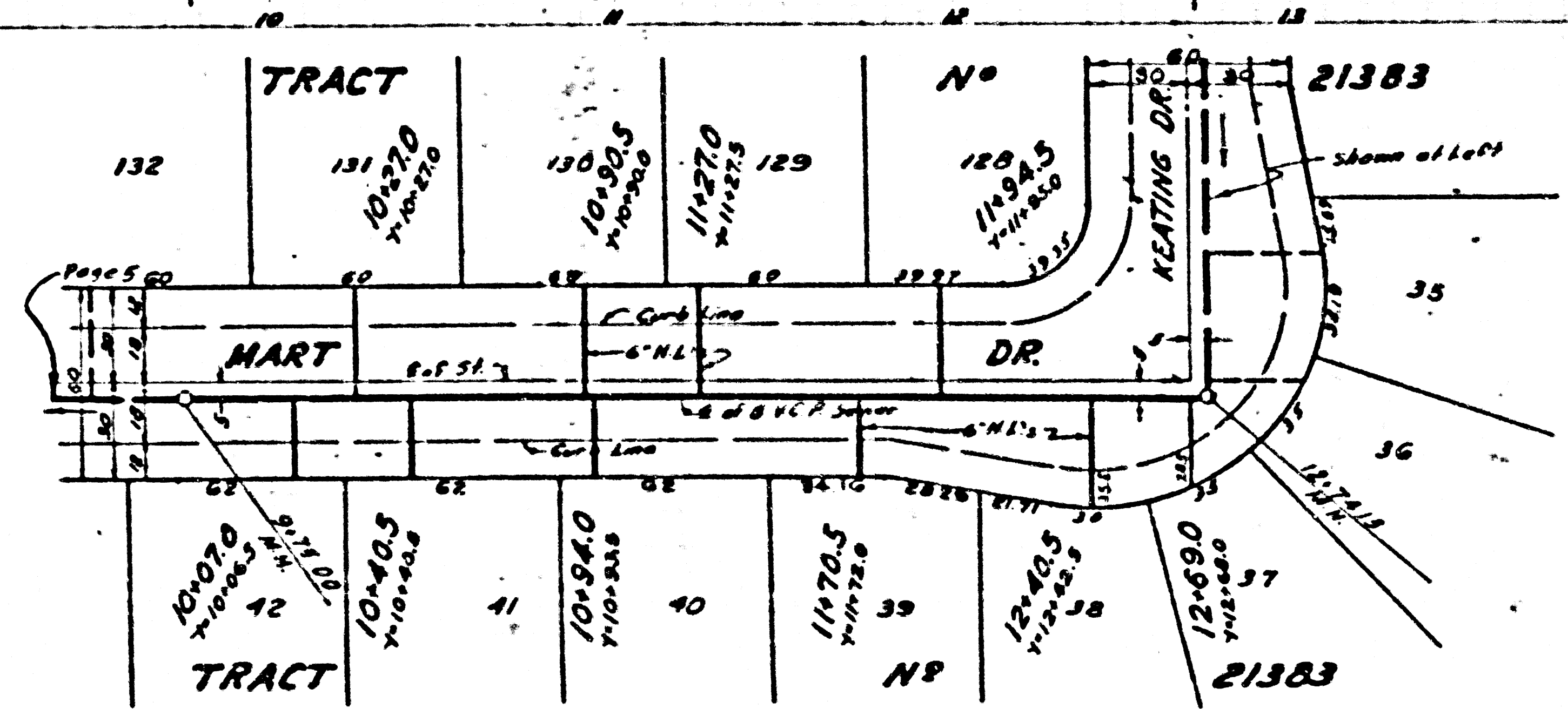
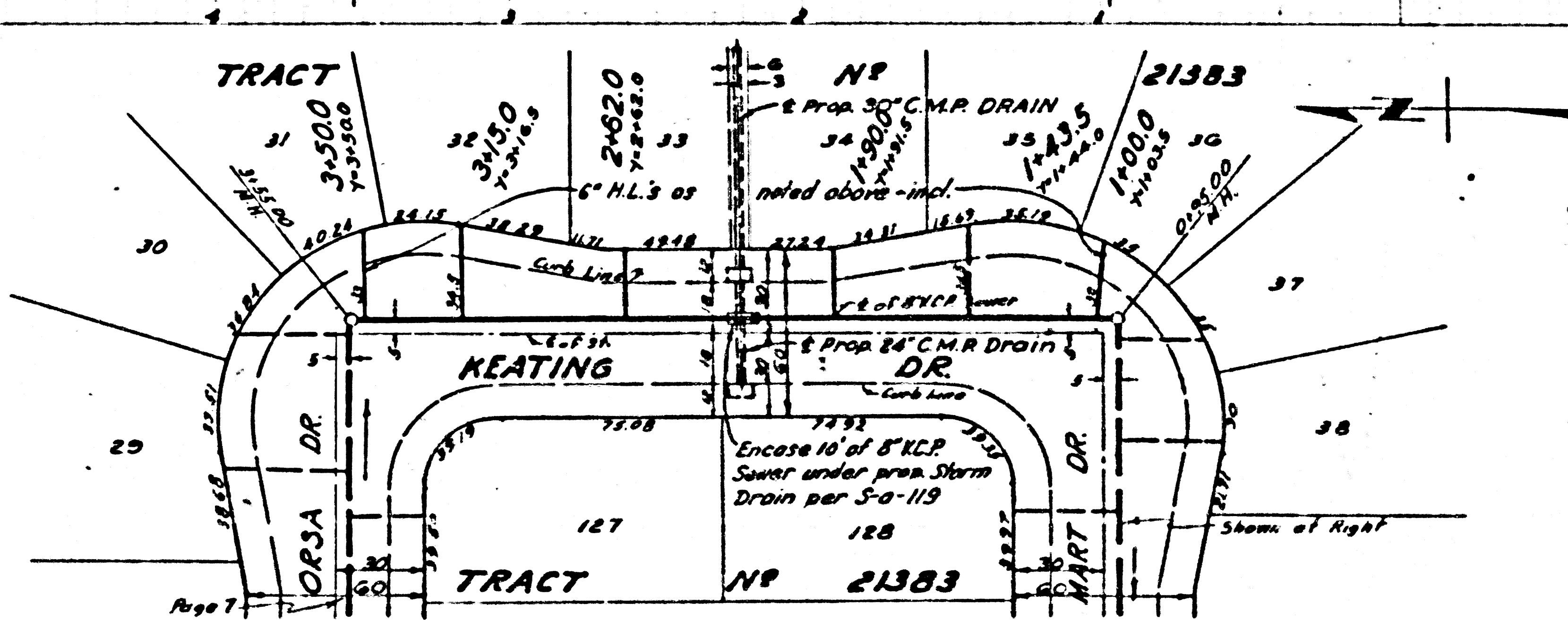
24,460



PC 3761
Page 8
Double Scale

NO CHARGE
FOR CONNECTIONS

24,459



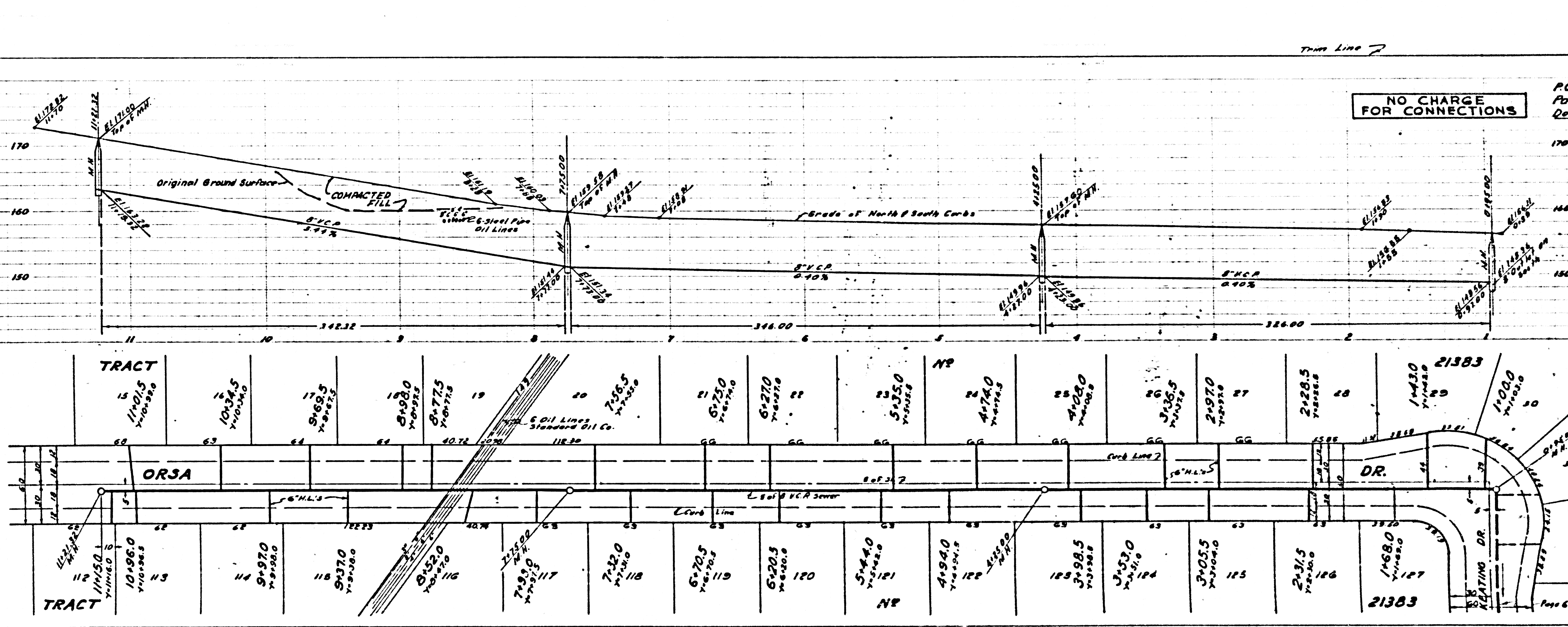
L-Trim Line

24

PC 3761
Page 8
Double Scale

PC 3761
Page 7
Double Scale

NO CHARGE
FOR CONNECTIONS



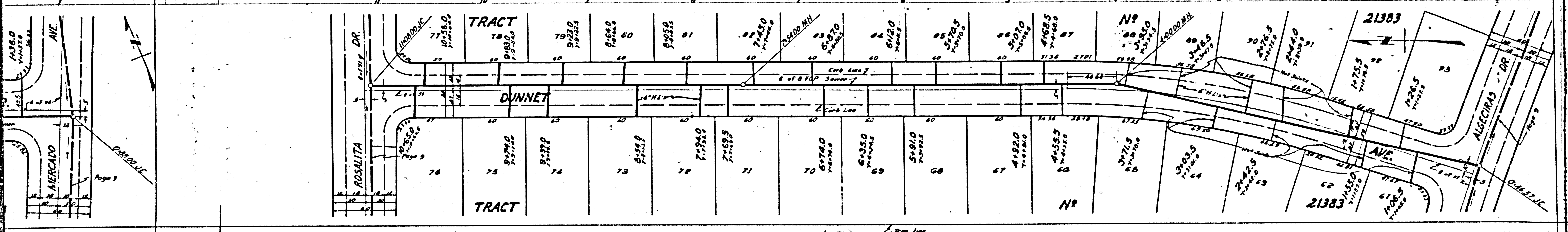
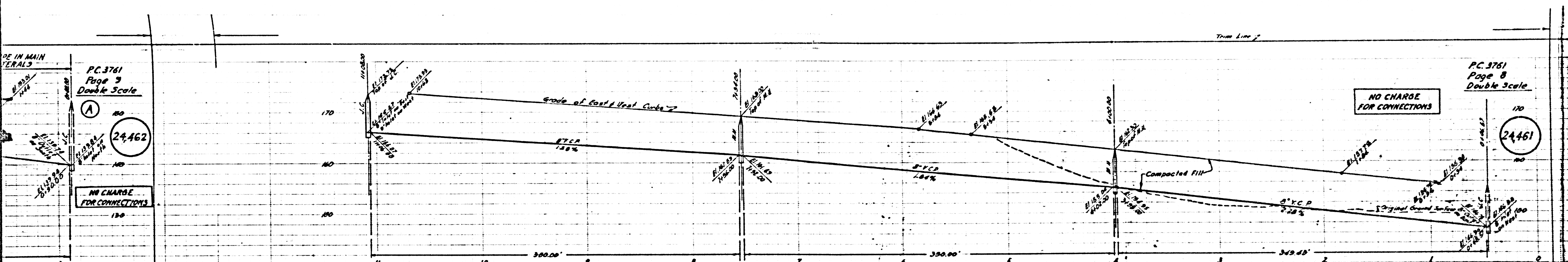
24461

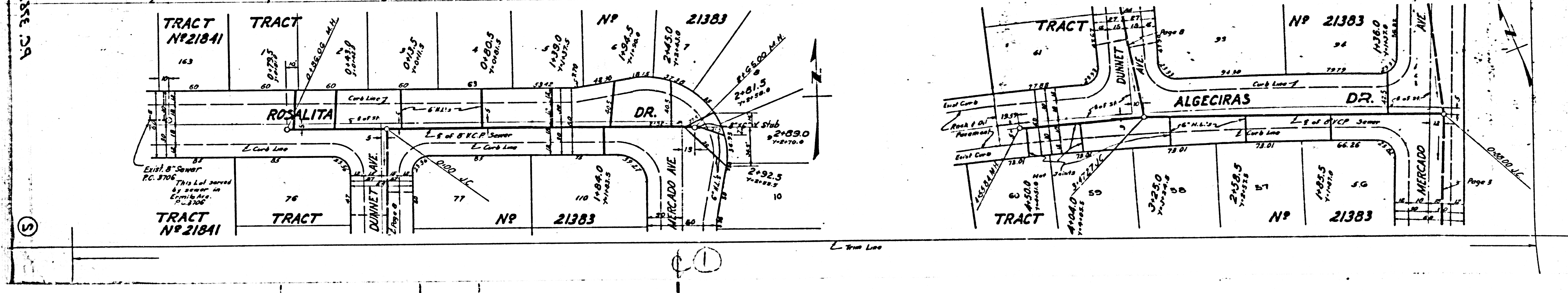
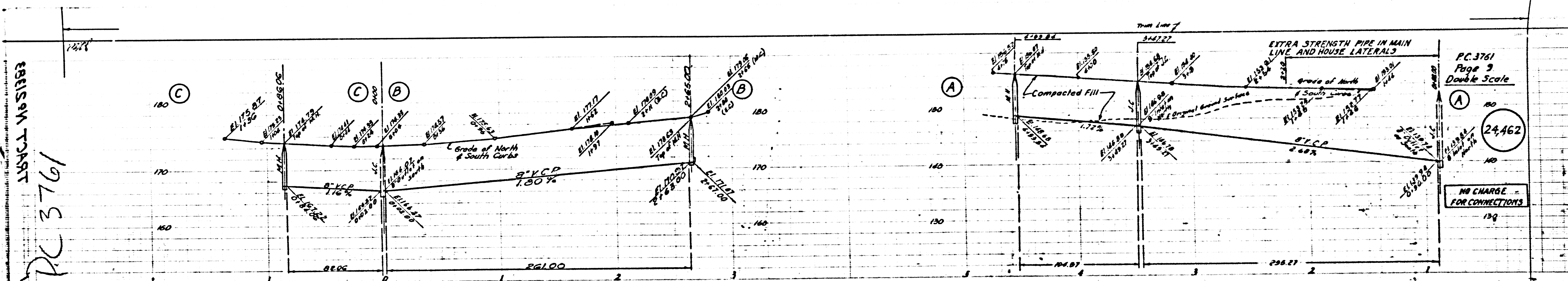
24460

23

PC. 3761
Page 7
Double Scale
24462
NO CHARGE FOR CONNECTIONS

PC. 3761
Page 8
Double Scale
24461
NO CHARGE FOR CONNECTIONS





BRISQAN TRACT
 PC 3761
 1536 DA

PC 3761
 Page 3
 Double Scale
 24,462
 NO CHARGE FOR CONNECTIONS
 159