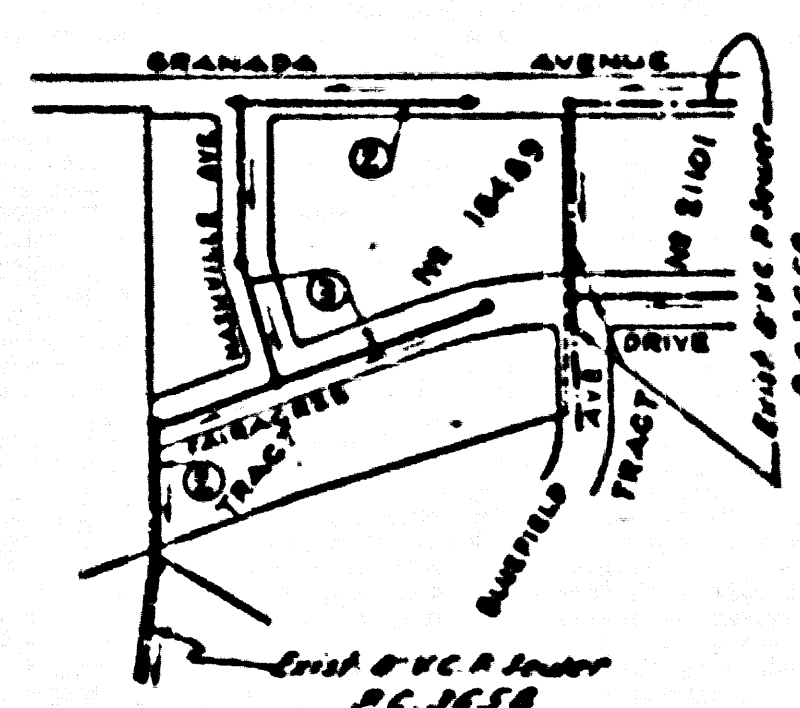


PAGE 2  
P.C. 3766

NO CHARGE FOR CONNECTIONS

22288



INDEX MAP  
TRACT NO. 18489 P.C. 3766  
SCALE: 1"=50'

NO CHARGE FOR CONNECTIONS

Checked 3-19-56 W. L. Laven

Trim Line

### NORWALK BLDG DIST. NO. 4.2

NOTE: 8" x 8" V.I.S. Lead & Not in conc. wall 237' S of W. Imperial Highway & about 100' E. of Los Flores Ave. (CON. 172.67)

NOTE:

Provide stakes on the property lines or property lines produced at right angles to the cover line of the center line of each manhole.

No representative of the County Engineer will survey or layout any portion of the work. The owner or his authorized representative shall furnish the County Engineer with grade sheets and stations for all house laterals and Y branches and shall provide stakes for them at their proper locations with stationing plainly marked. Any change in location shall be requested in writing by the owner or his representative.

No revisions shall be made in these plans without the approval of the County Engineer.

1. Use standard manhole frames and covers, S-1117.
2. Use standard strength pipe except as noted.
3. Use cement mortar for all vitrified clay pipe joints.
4. Resurface all trench within paved area to meet L. A. County Road Dept. or California State Highway Dept. requirements in accordance with permit.
5. Excavate four feet of sewer at points of interference with poles, S-1119.
6. House laterals to be constructed with lavets at property line \_\_\_\_\_ feet below curb grade except as noted.
7. All structures shall be brick sewer structures, S-1104.
8. For allowable leakage test, use Formula No. \_\_\_\_\_ Spec's., Sec. 51.
9. Manhole tops in unimproved Rights-Of-Way to be 6" above finish grade.

NOTE: LOTS 1, 12 & 14 ARE SERVED BY P.C. 3659

SHEET NO. 12 PAGES 17

PROFILE, ALIGNMENT AND GRADE OF  
SANITARY SEWERS  
TO BE CONSTRUCTED IN

TRACT NO. 18489

PRIVATE CONTRACT NO. 3766  
W. S. 34  
1 SHEET

Scale: VERT. 1"=4' HORIZ. 1"=40' NOV-1955  
PREPARED IN THE OFFICES OF

KEMNER ENGINEERING CO. INC.

By John C. Thomson Reg. C.E. No. 2244

FOR LEGEND SEE PLAN NO. S-4-64

NOTE: Grades to which this improvement is to be constructed are shown on plans and profiles. Grade points for top of curb, cover line of streets, or center line of ditches are shown by circles on profiles. At all points between designated points the grade shall be established so as to conform to a straight line drawn between said designated points. Elevations are in feet above U.S.C. & G.S. sea level datum of 1929. This drawing and the data hereon are hereby made a part of the specifications. Work shall be constructed according to specifications on file in the office of the County Engineer and shall be prosecuted only in the presence of the County Engineer. Before work can be started, the contractor must obtain a permit to encroach in County streets from the L.A. County Road Dept., 188 W. 2nd St. and make a deposit with the County Engineer, Form S.L.A. 255 & Bonding sufficient to cover the cost of construction inspection and record plans. Approval of this plan by the County of Los Angeles does not constitute a representation as to the accuracy of the location of or the existence or non-existence of any underground utility, pipe, or structure within the limits of this project. This note applies to all sheets. If work is to be done in a State Highway, a permit shall be obtained from the State of California, Division of Highways, 120 South Spring Street.

COUNTY OF LOS ANGELES, CALIFORNIA  
Approved, John A. Lambson County Engineer Approved, A. M. Bean  
CHIEF ENGINEER DIST. NO. 18  
By A.P. Collins By H. Fortman  
Sanitation Engineer Chief Engineer  
Checked by P. K. Laven 12-13-55  
Office of County Engineer, Reg. C.E. No. 7860

PAGE 1  
P.C. 3766

22287

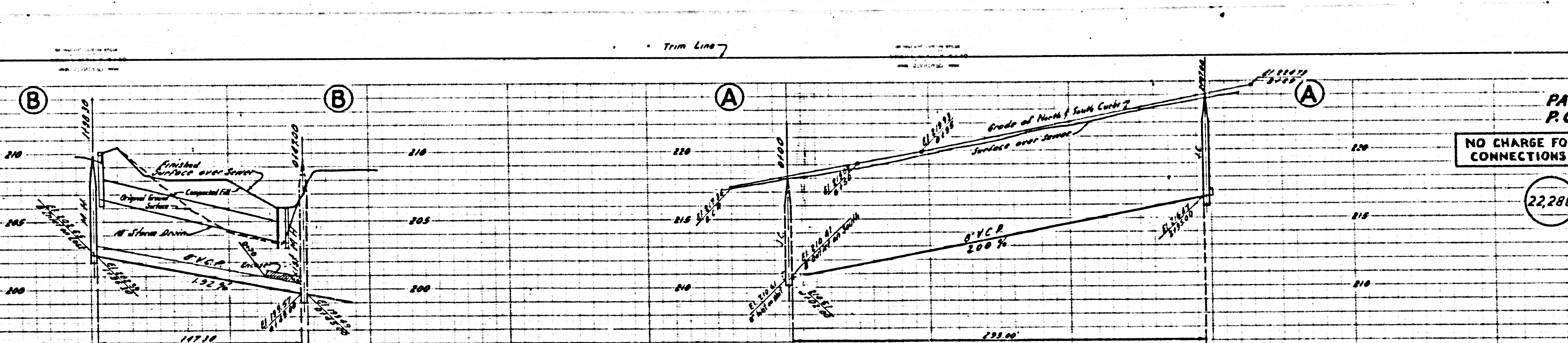
(3)

TRACT NO. 18489  
P.C. 3766

P.C. 3766

RL

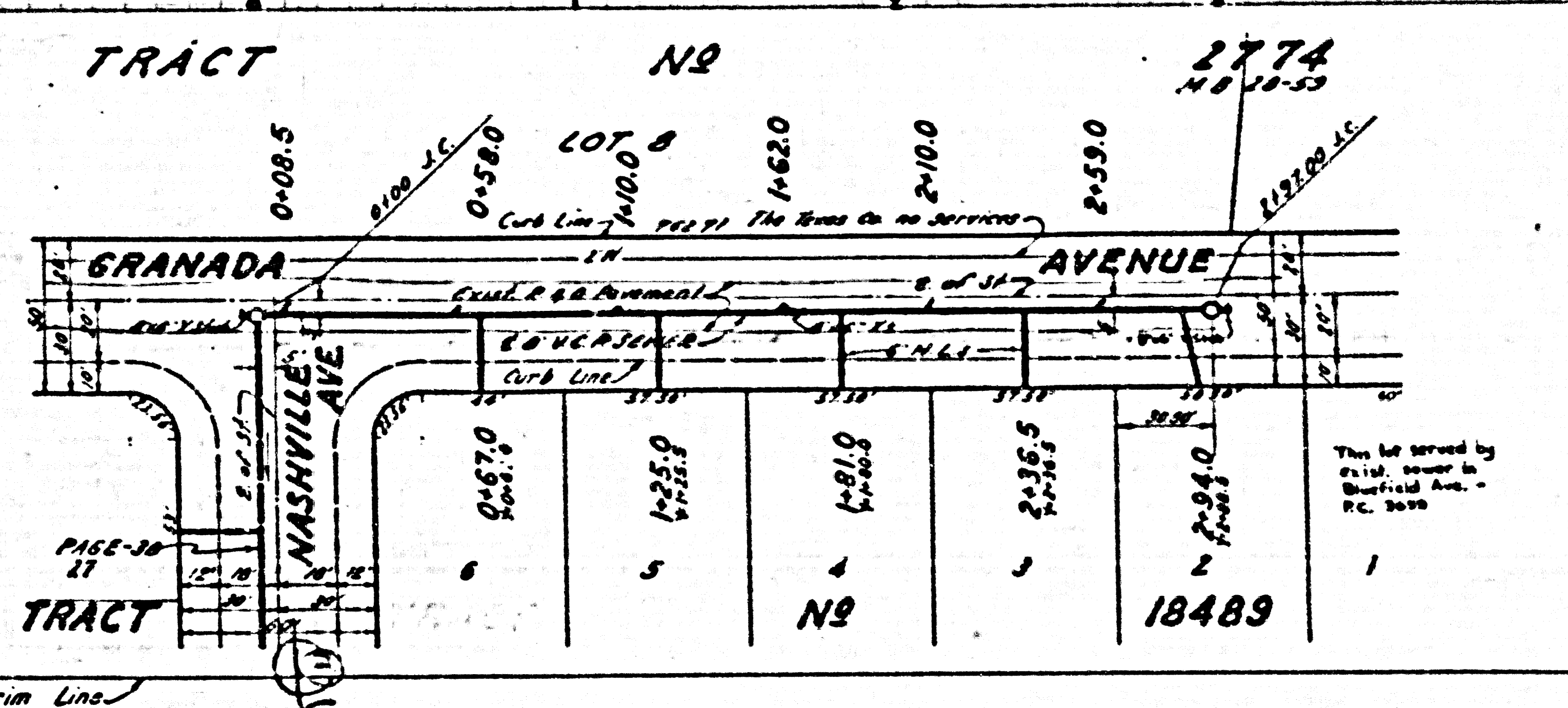
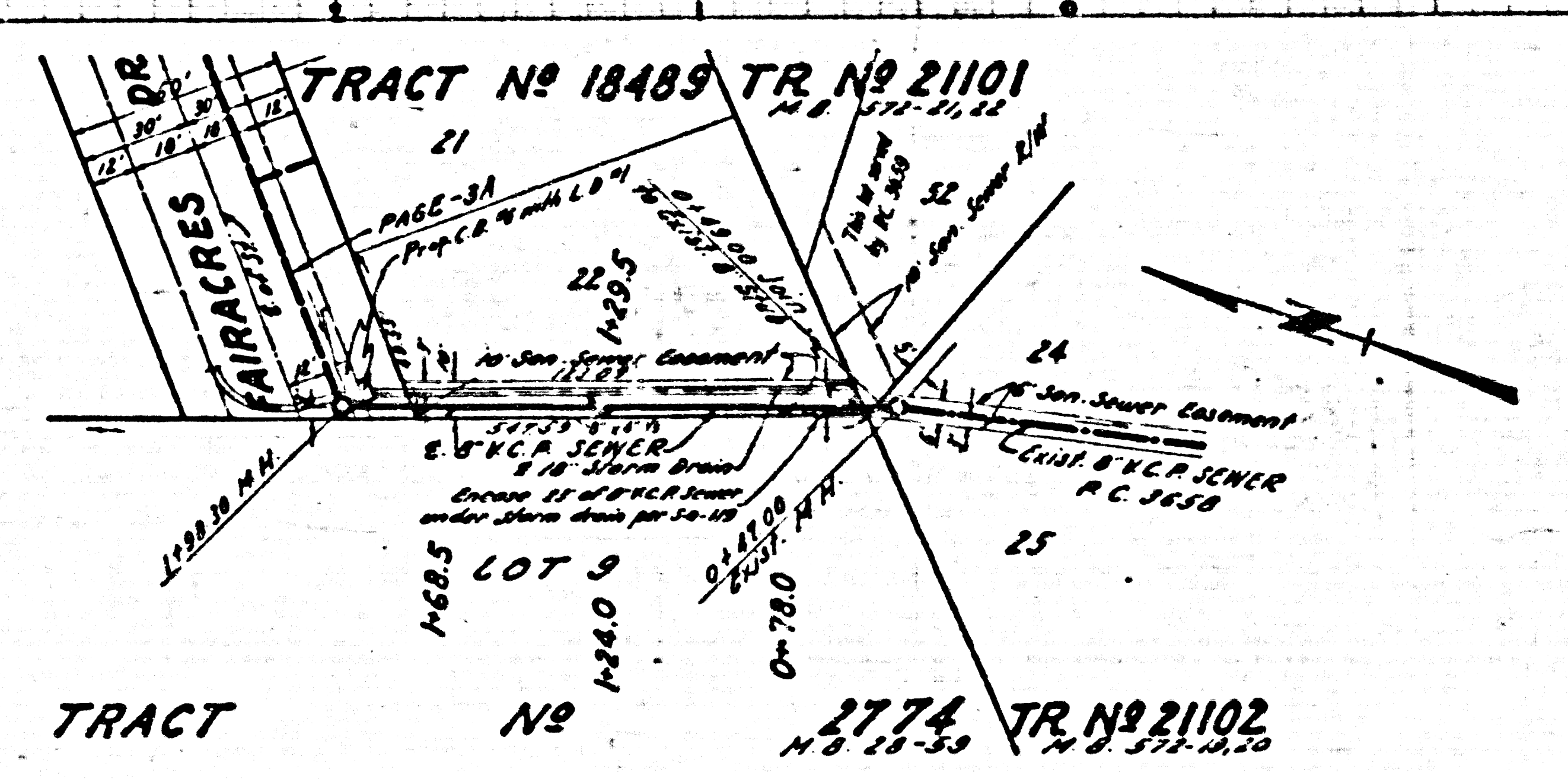




PAGE 2  
P.C. 3766

NO CHARGE FOR  
CONNECTIONS

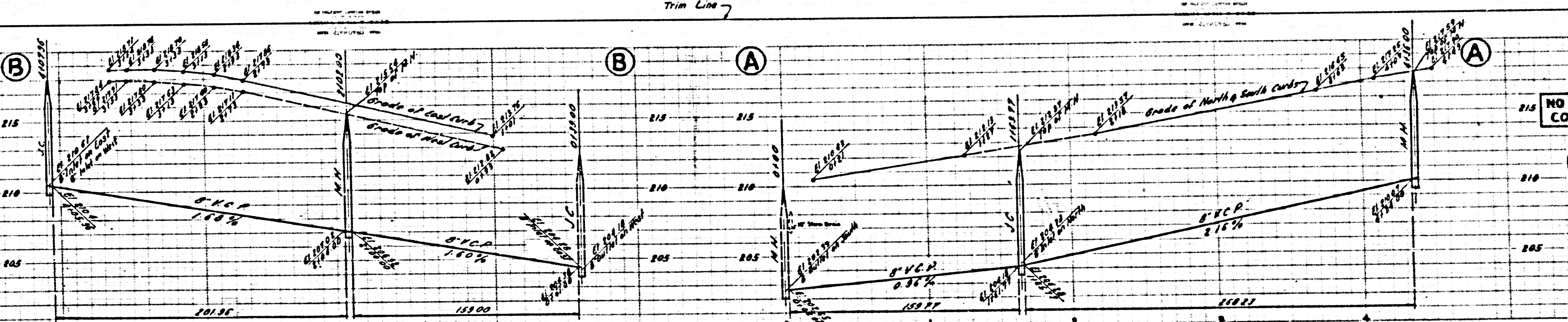
22288



Trim Line



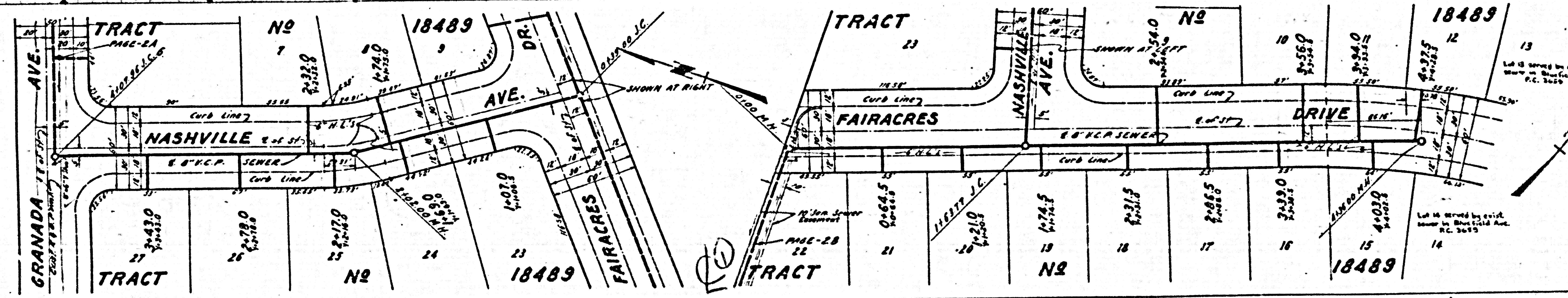
PC 5766



PAGE 3  
P.C. 3766

NO CHARGE FOR CONNECTIONS

22,289



Lot 13 served by exist. sewer on Bluefield Ave. P.C. 3069

Lot 16 served by exist. sewer on Bluefield Ave. P.C. 3069