

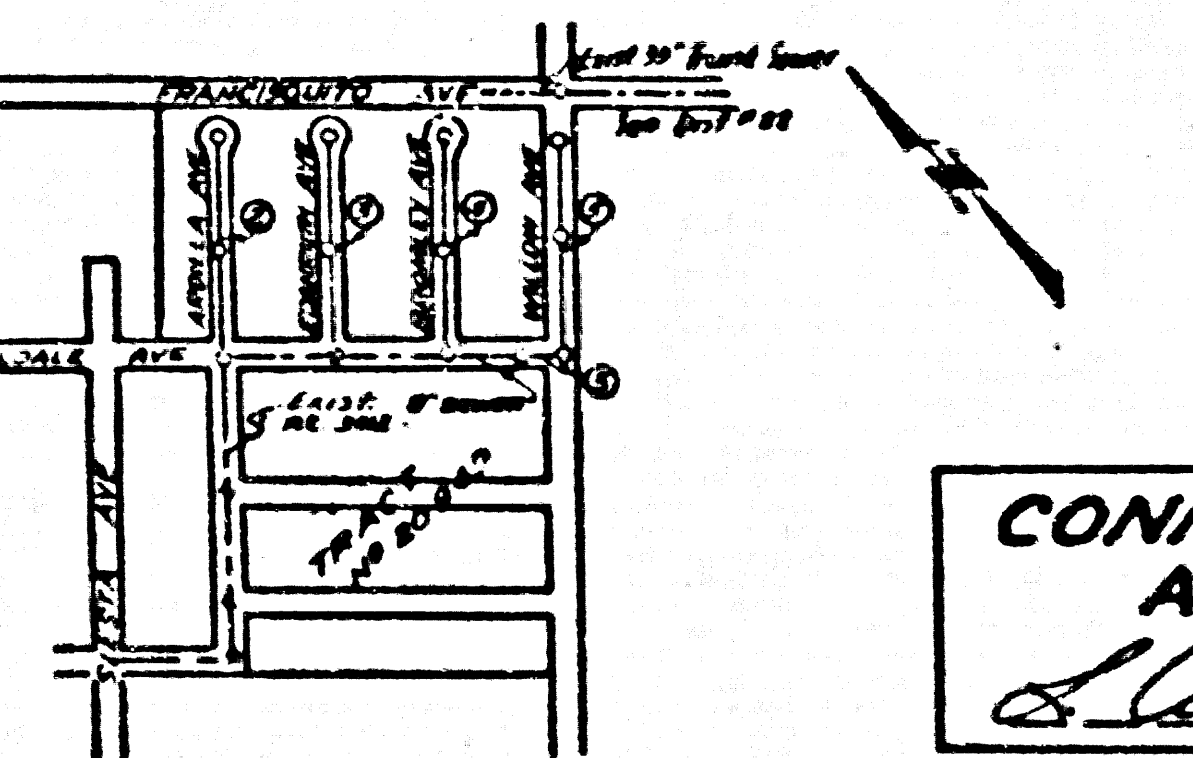
B.M. 37-13 County Survey Monument  
 at Corner of 1st St. & Willow Avenue  
 of Francisco Avenue, U.S. Co. San  
 37-13 Elev. 335.750'  
 This is equal to Rd. Dept. B.M. S.C.  
 382 Elev. 335.860' Add 0.110' to  
 all elev. herein to be as Rd. Dept.  
 datum.

TABLE

SHEET NO.	PAGES
1	1-5

TRIMLINE 7  
 PUENTE BLDG DIST NO 2

- NOTE:  
 Provide stakes on the property lines or property lines produced at right angles to the sewer line at the center line of each manhole.  
 No representative of the County Engineer will survey or layout any portion of the work.  
 The owner or his authorized representative shall furnish the County Engineer with grade sheets and stations for all house laterals and Y branches and shall provide stakes for them at their proper locations with stationing plainly marked. Any change in location shall be requested in writing by the owner or his representative.  
 No revisions shall be made in these plans without the approval of the County Engineer.
1. Use standard manhole frames and covers, S-a-117.
  2. Use standard strength pipe except as noted.
  3. Use cement mortar for all vitrified clay pipe joints.
  4. Resurface all trench within paved area to meet L.A. County Road Dept. or Calif. State Highway Dept. requirements in accordance with permit.
  5. Encase four feet of sewer at points of interference with poles, S-a-119.
  6. House laterals to be constructed with inverts at property line... feet below curb grade except as noted.
  7. All structures shall be brick sewer structures, S-a-104.
  8. Manhole tops in unimproved Rights-Of-Way to be 6" above finish grade.
  9. For allowable leakage test, use Formula No. 1, Spec's., Sec. 51.



CONNECTION CHARGES  
 AS INDICATED  
*As per 12-20-55*

INDEX MAP  
 SCALE 1" = 600'  
 TRACT NO 20966

*Checked 4-6-56 W. Loren*

P.C. 3773  
 PAGE 1  
 (22,362)

PROFILE, ALIGNMENT AND GRADE OF  
 SANITARY SEWERS  
 TO BE CONSTRUCTED IN  
 TRACT NO 20966

PRIVATE CONTRACT NO. 3773  
 W.S. 46  
 SHEET 1 OF 1 SHEET  
 Scale: HORIZ. 1" = 40' VERT. 1" = 4'  
 NOV. 1953

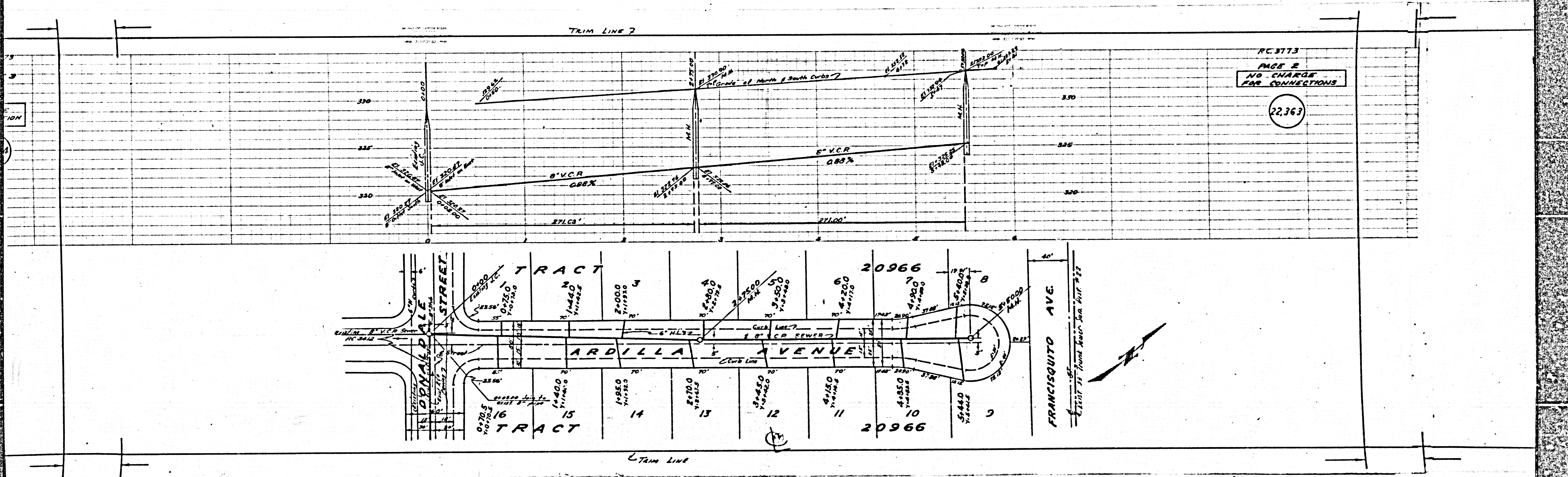
PREPARED IN THE OFFICE OF  
 JENNINGS ENGINEERING COMPANY  
 P.C. 3773  
 FOR LEGEND SEE PLAN NO. S-a-64

NOTE:  
 Grades to which this improvement is to be constructed are shown on plans and profiles. Grade points for top of curbs, center line of streets, or center line of alleys are shown by circles on profiles. At all points between designated points the grade shall be established so as to conform to a straight line drawn between said designated points. Elevations are in feet above U.S.C. & G.S. Sea Level Datum of 1929.  
 This drawing and the data hereon are hereby made a part of the specifications.  
 Work shall be constructed according to specifications on file in the office of the County Engineer and shall be prosecuted only in the presence of the County Engineer.  
 Before work can be started, the contractor must obtain a permit to excavate in County streets from the L.A. County Road Dept., 108 W. 2nd St. and make a deposit with the County Engineer, R.M. 324, 233 South Broadway, sufficient to cover the cost of construction inspection and record plans.  
 Approval of this plan by the County of Los Angeles does not constitute a representation as to the accuracy of the location of or the existence or non-existence of any underground utility, pipe, or structure within the limits of this project. This note applies to all sheets.  
 If work is to be done in a State Highway, a permit must be obtained from the State of California, Division of Highways, 120 South Spring Street.

COUNTY OF LOS ANGELES, CALIFORNIA  
 Approved, *John A. Gaudier*, County Engineer  
 Approved, *A. M. Rowe*  
 Chief Civil Engineer  
*J. P. Collins* District Engineer  
 Office Engineer  
 Office of County Engineer, Reg. C. & No. 78622

TRACT NO 20966  
 P.C. 3773

TRIM LINE

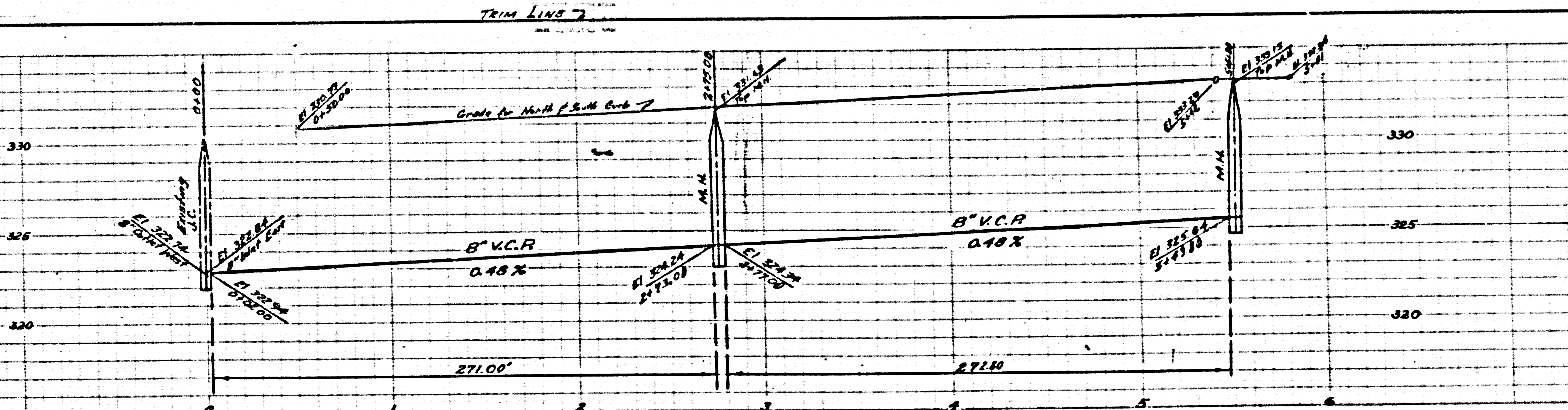




CHARGE  
VICATED

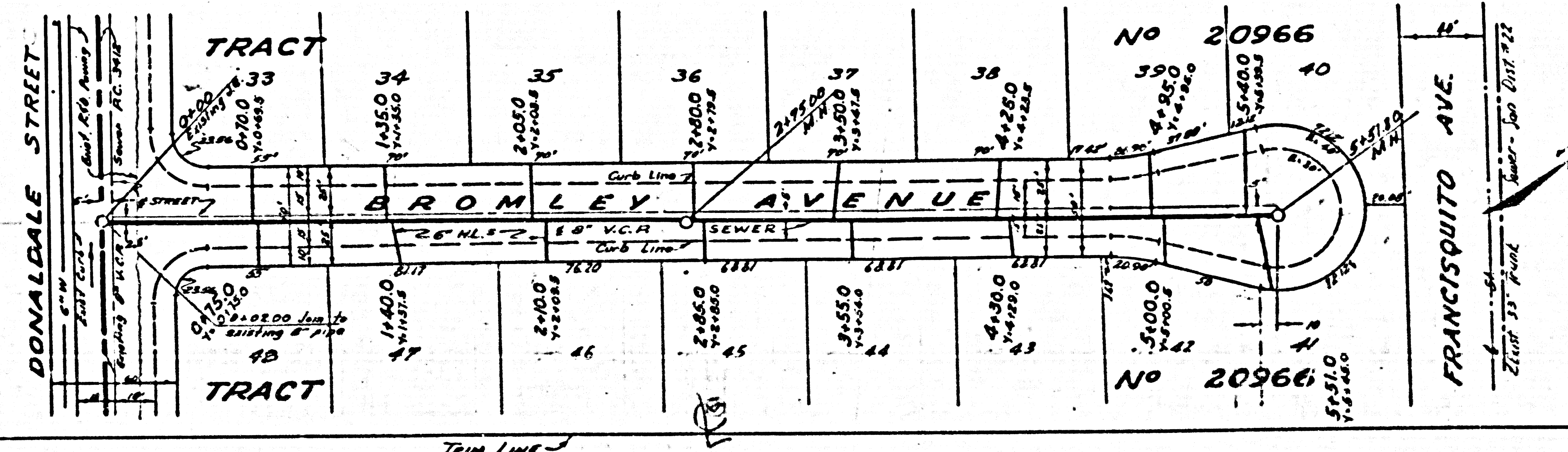
366

TRIM LINE



NO CHARGE  
FOR CONNECTION

22,365

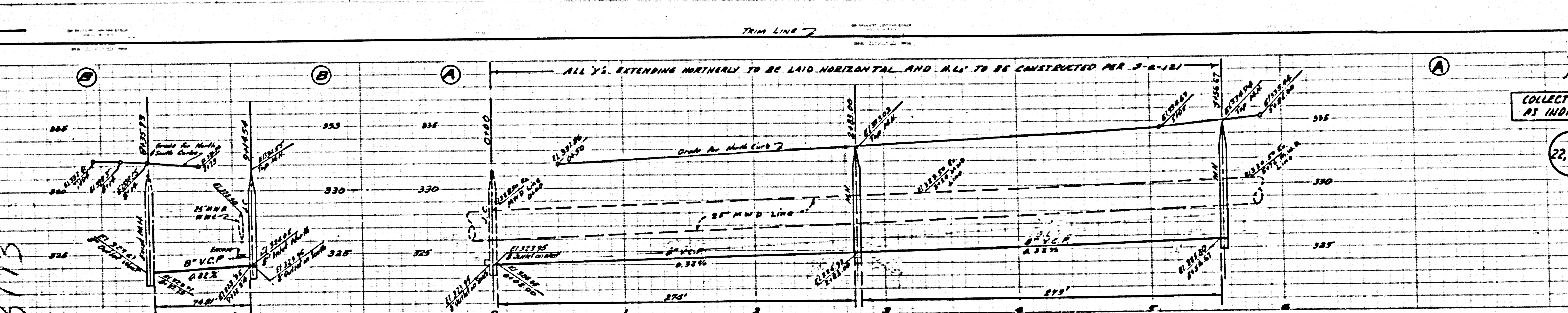


TRIM LINE

COLLECT CHARGE AS INDICATED

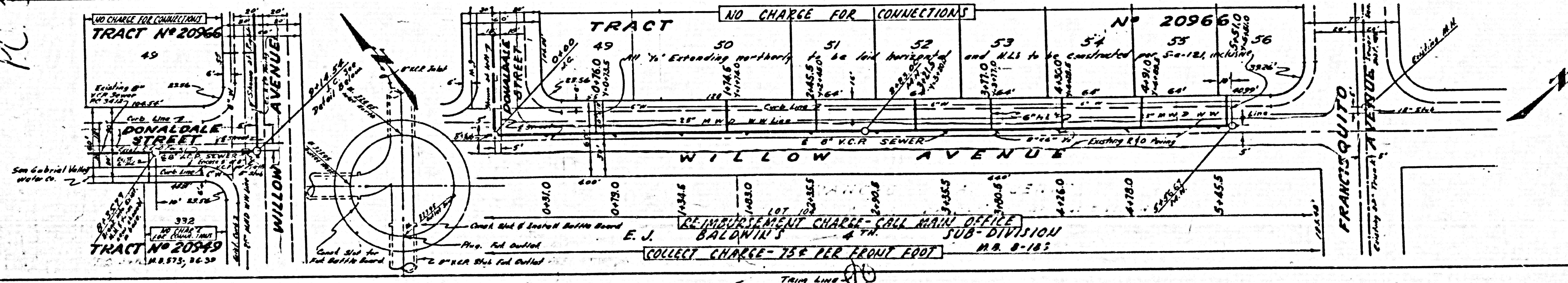
22,366

ALL Y<sub>2</sub> EXTENDING NORTHERLY TO BE LAID HORIZONTAL AND M.L.S. TO BE CONSTRUCTED PER S-8-181



NO CHARGE FOR CONNECTIONS  
TRACT N° 20966

NO CHARGE FOR CONNECTIONS  
TRACT N° 20966



REIMBURSEMENT CHARGE - CALL MAIN OFFICE  
E. J. BALONIK'S  
COLLECT CHARGE - 75¢ PER FRONT FOOT  
SUB-DIVISION  
M.B. 8-183

PC 3773

TRIM LINE