

TRACT NO. 22177
PC 3783

TEMPLE CITY BLDG. DIST. NO. 5

- NOTE:**
1. Provide stakes on the property lines or property lines produced at right angles to the sewer line at the center line of each manhole.
 2. No representative of the County Engineer will survey or layout any portion of the work.
 3. The owner or his authorized representative shall furnish the County Engineer with grade sheets and stations for all base laterals and T branches and shall provide stakes for them at their proper locations with stationing plainly marked. Any change in location shall be requested in writing by the owner or his representative.
 4. No revisions shall be made in these plans without the approval of the County Engineer.
 5. Use standard manhole frames and covers, S-117.
 6. Use standard strength pipe except as noted.
 7. Use cement mortar for all vitrified clay pipe joints.
 8. Resurface all trench within paved areas to meet L.A. County Road Dept. or California State Highway Dept. requirements in accordance with permit.
 9. Excise four feet of sewer at points of interference with poles, S-119.
 10. House laterals to be constructed with laterals at property line 6 feet below curb grade except as noted.
 11. All structures shall be brick sewer structures, S-104.
 12. For allowable leakage test, use Formula No. 3, Spool's, Sec. 81.
 13. Manhole top: in unimproved Right-Of-Way to be 6" above finish grade.

PROFILE, ALIGNMENT AND GRADE OF
SANITARY SEWERS
TO BE CONSTRUCTED IN
TRACT NO. 22177

PRIVATE CONTRACT NO. 3783
W. S. 44
1 SHEET
Scale: $\frac{1}{4}$ " = 1'-0"
DEC. 1958

PREPARED IN THE OFFICE OF
M. W. FINLEY

FOR LEGEND SEE PLAN NO. S-44

NOTE:

Grades to which this improvement is to be constructed are shown on plans and profiles. Grade points for top of curb, center line of street, or center line of alley are shown by circles on profiles. All points between designated points the grade shall be established so as to conform to a straight line drawn between said designated points.

Elevations are in feet above U.S.C.G.S. Mean Level Datum of 1929.

This drawing and the data herein are hereby made a part of the specifications.

Work shall be constructed according to specifications on file in the office of the County Engineer and shall be prosecuted only in the presence of the County Engineer.

Before work can be started, the contractor must obtain a permit to excavate in County streets from the L.A. County Road Dept., 198 W. 2nd St., and make a deposit with the County Engineer, 2nd Fl. Post-Office Bldg., 257 1/2 Broadway, sufficient to cover the cost of construction inspection and record plans.

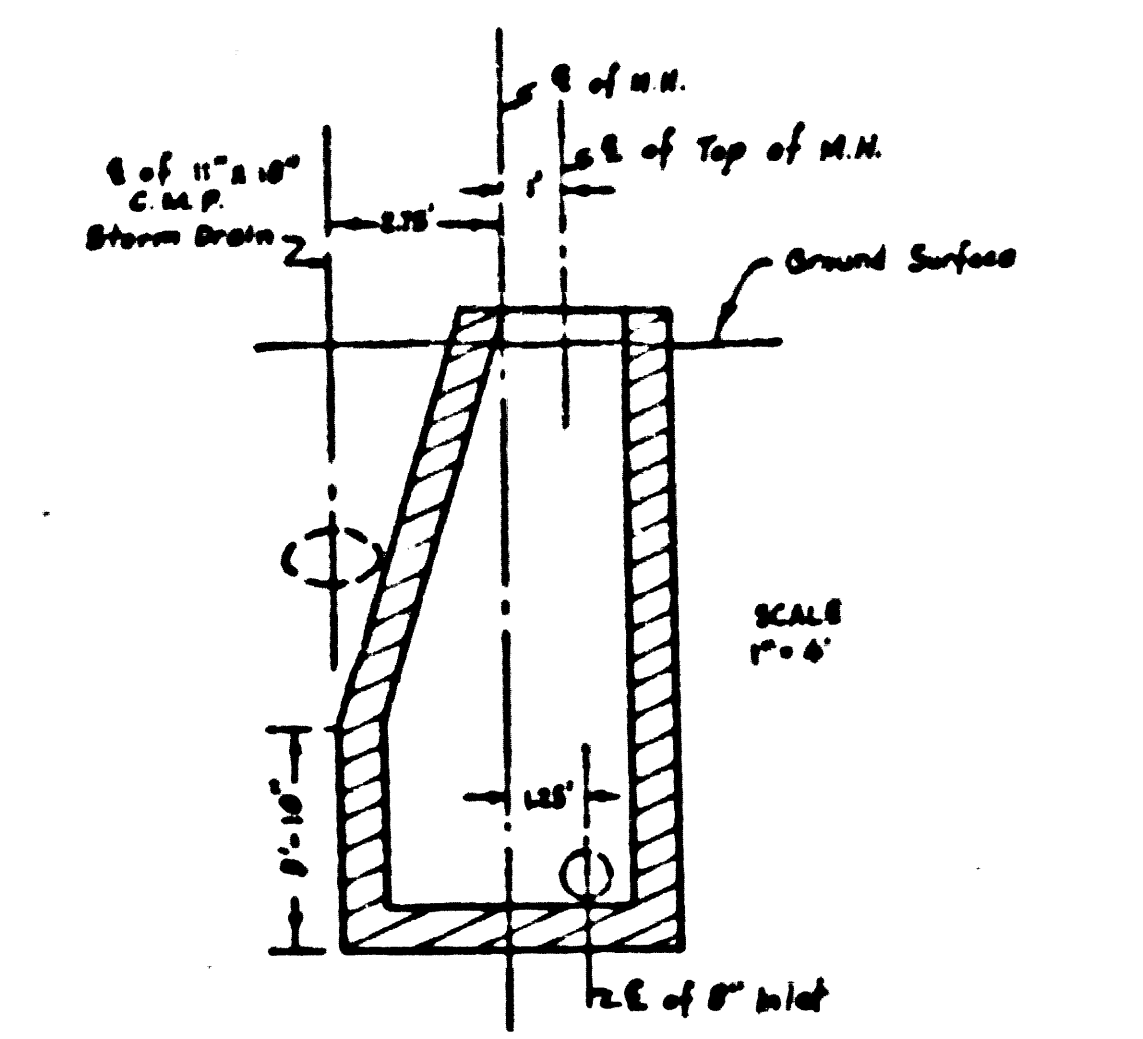
Approval of this plan by the County of Los Angeles does not constitute a representation as to the accuracy of the location of or the existence or non-existence of any underground utility, pipe, or structure within the limits of this project. This note applies to all sheets.

If work is to be done in a State Highway, a permit must be obtained from the State of California, Division of Highways, 120 South Spring Street.

COUNTY OF LOS ANGELES, CALIFORNIA

Approved, John A. Lamb, County Engineer
Checked by: J.P. Collins, Sanitation Engineer
Approved, A. M. Ryan, Civil Engineer
Checked by: P.K. Kahan, 12-19-55, Office of County Engineer, Reg. C. E. No. 7860.

DETAIL OF M.H. AT STA. 2+33.30

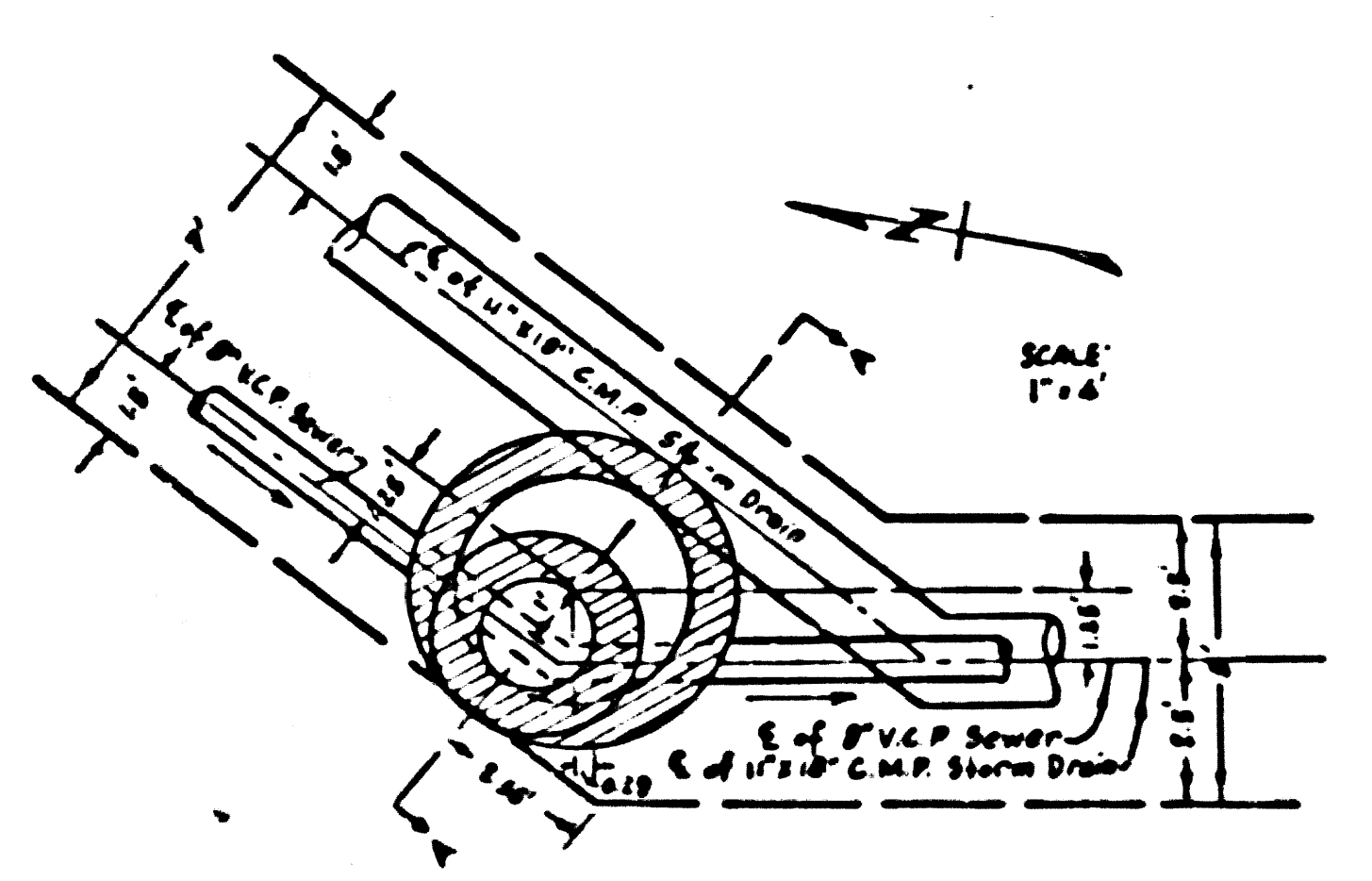


3/4" S.B. 316 stake in use in 1951 City of Los Angeles, 100 South of 1st St. between 1st and 2nd St. Station 2+33.30. Marked T.S. 85. C.E. 370 260

SHEET	PROFS
3	1-B

COLLECT CHARGES AS INDICATED
R.K. Kahan 12-19-55

CROSS-SECTION THROUGH AA

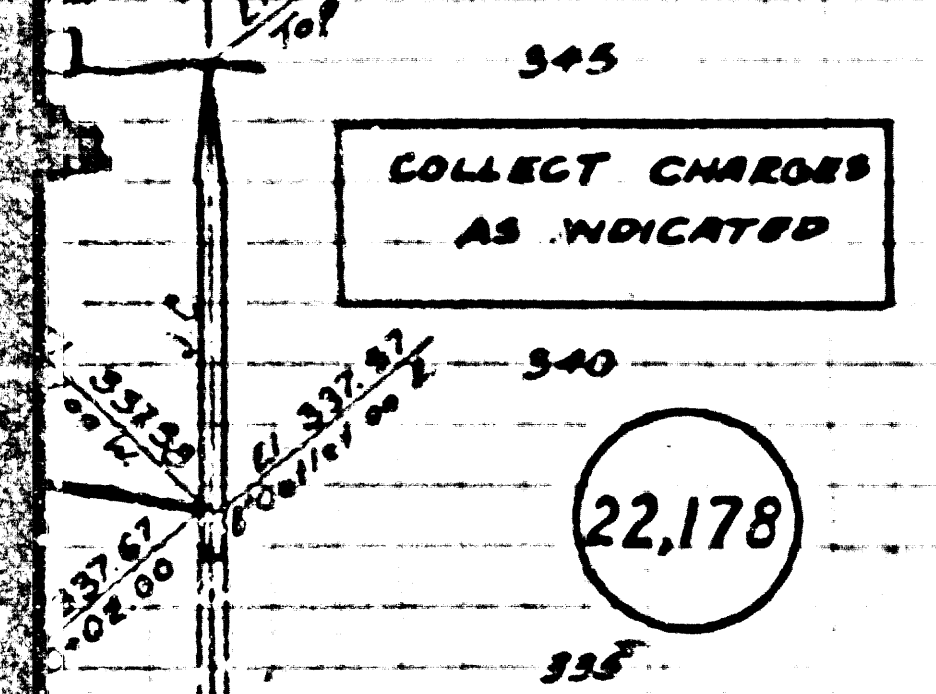


INDEX MAP
SCALE 1" = 400'
TRACT NO. 22177
PC. 3783

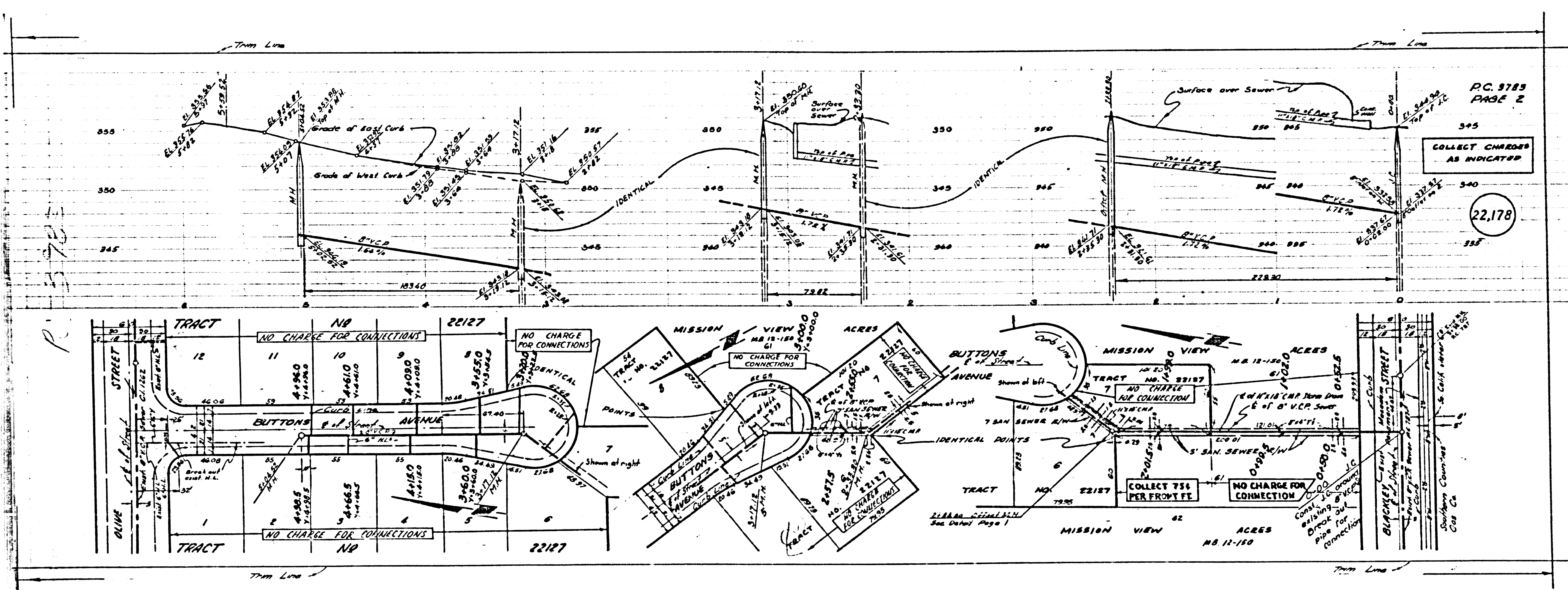
Revision on Buttons Avenue
Office of the County Engineer
By: S.V. Onda 1-13-55
Reg. C.E. No. 3406

checked 2-6-56 [Signature]

PC. 3783
PAGE 2



BLANCHETT, L. A. CIVIL ENGINEER
1000 W. 1st St. Los Angeles, Calif.
SOUTHERN CALIFORNIA GAS CO.
SOUTHERN CALIFORNIA GAS CO.
SOUTHERN CALIFORNIA GAS CO.



R. 572

