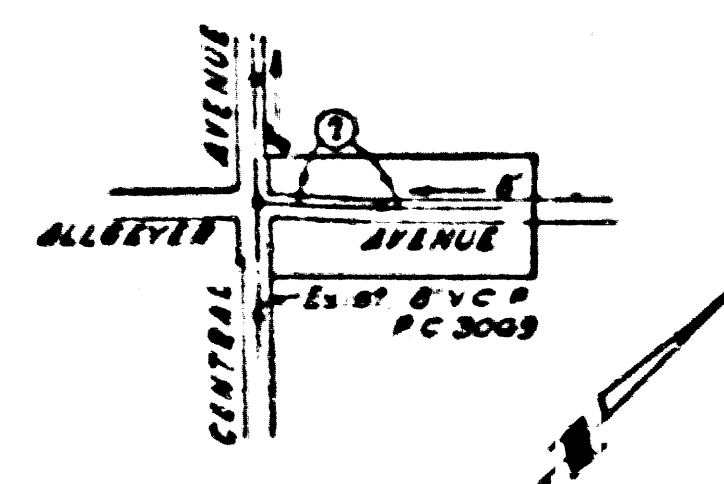


BENCH MARK:
 LEAD AND BENCH NAIL IN OLD CATCH
 BASIN 750 W. OF E OF DUNGER ROAD
 ABOUT 850' NORTH OF JUNE
 ROAD.
 S.Y. 1980 ELEV. 841.399 ADJ. 1950

PUENTE Bldg. Dist. No. 2

- NOTE:**
 Provide stakes on the property lines or property lines produced at right angles to the sewer line at the center line of each manhole.
 No representative of the County Engineer will survey or layout any portion of the work. The owner or his authorized representative shall furnish the County Engineer with grade sheets and stations for all house laterals and Y branches and shall provide stakes for them at their proper locations with stationing plainly marked. Any change in location shall be requested in writing by the owner or his representative.
 No revisions shall be made in these plans without the approval of the County Engineer.
1. Use standard manhole frames and covers, S-a-117. Except as noted.
 2. Use standard strength pipe except as noted.
 3. Use cement mortar for all vitrified clay pipe joints.
 4. Resurface all trench within paved area to meet L.A. County Road Dept. or Calif. State Highway Dept. requirements in accordance with permit.
 5. Encase four feet of sewer at points of interference with poles, S-a-119.

- All structures shall be brick sewer structures, S-a-104. Except as noted.
- For allowable leakage test, use Formula No. 1, Spec's., Sec. 51.
- Manhole tops in unimproved Rights-of-Way to be 6" above finish grade.



Steel	Paper
1	1-2

CONNECTION CHARGES AS INDICATED
L. Curtis 1-12-56

checked 3-15-56 M. Lavin

PROFILE, ALIGNMENT AND GRADE OF
 SANITARY SEWERS
 TO BE CONSTRUCTED IN

TRACT No. 20020

PRIVATE CONTRACT NO. 3784
 W. S. 37

SHEET 1 OF 1 SHEET
 OCTOBER, 1955
 PREPARED BY THE OFFICE OF
 VISTA DEVELOPERS, INC.
 by *A. Richard Brown, Jr.*
 No. 2, No. 9983
 FOR LEGEND SEE PLAN NO. S-a-64

NOTE:
 Grades to which this improvement is to be constructed are shown as plans and profiles. Grade points for top of curbs, center line of streets, or center line of alleys are shown by circles on profiles. At all points between designated points the grade shall be established so as to conform to a straight line drawn between said designated points.
 Elevations are in feet above U.S.C. & G.S. sea level Datum of 1929.
 This drawing and the data hereon are hereby made a part of the specifications.
 Work shall be constructed according to specifications on file in the office of the County Engineer and shall be prosecuted only in the presence of the County Engineer.
 Before work can be started, the contractor must obtain a permit to excavate in County streets from the L.A. County Road Dept., 108 W. 2nd St., and make a deposit with the County Engineer, Room 518, 253 South Broadway, sufficient to cover the cost of construction inspection and record plans.
 Approval of this plan by the County of Los Angeles does not constitute a representation as to the accuracy of the location of or the existence or non-existence of any underground utility, pipe, or structure within the limits of this project. This note applies to all sheets.
 If work is to be done in a State Highway, a permit must be obtained from the State of California, Division of Highways, 120 South Spring Street.

COUNTY OF LOS ANGELES, CALIFORNIA
 Approved, John A. Lambie, County Engineer
 Approved, A. M. Bawn
 One Seal, CO. 509 501 No. 5
A. M. Bawn
 Checked by *S. K. White* 1-12-56
 Office of County Engineer, Dep. C. E. No. 3166

TRACT No. 20020
 P.C. 3784
 P.C. 3784
 P.C. 3784

22,283

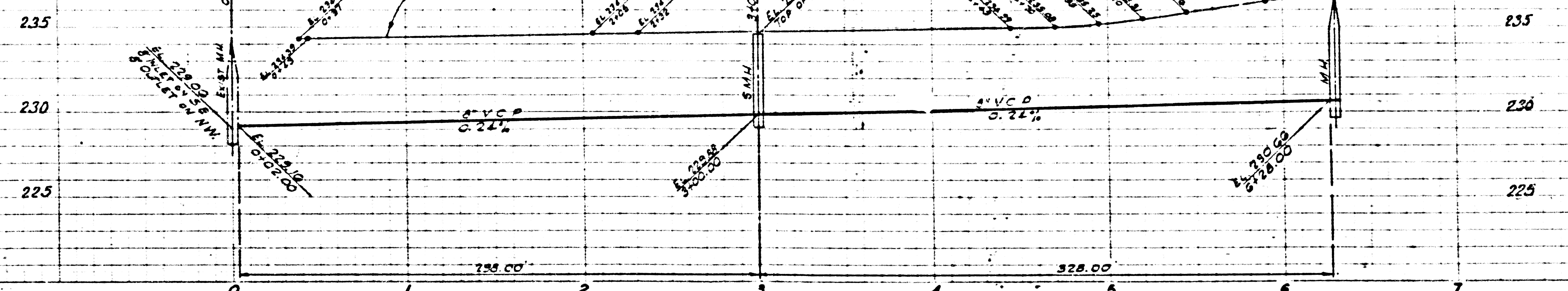
(2)

8/72

Trim Line

V'S TO BE LAID HORIZONTAL AND HOUSE LATERALS TO BE CONSTRUCTED WITH 1/8" RISE PER FOOT TO PROPERTY LINE

GRADE OF NORTHWEST AND SOUTHEAST CURB

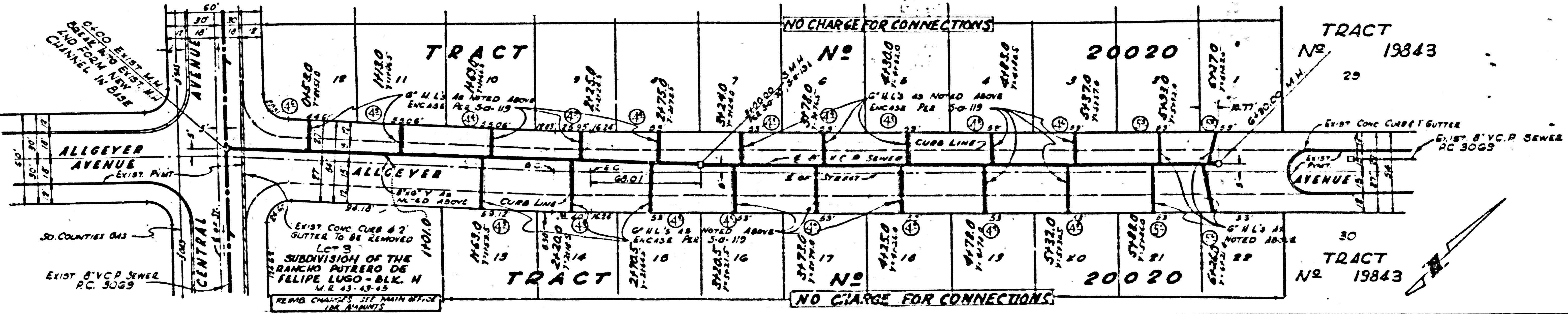


3784

PAGE 2
RC. 3784

CONNECTION CHARGES
AS INDICATED

22,284



Trim Line