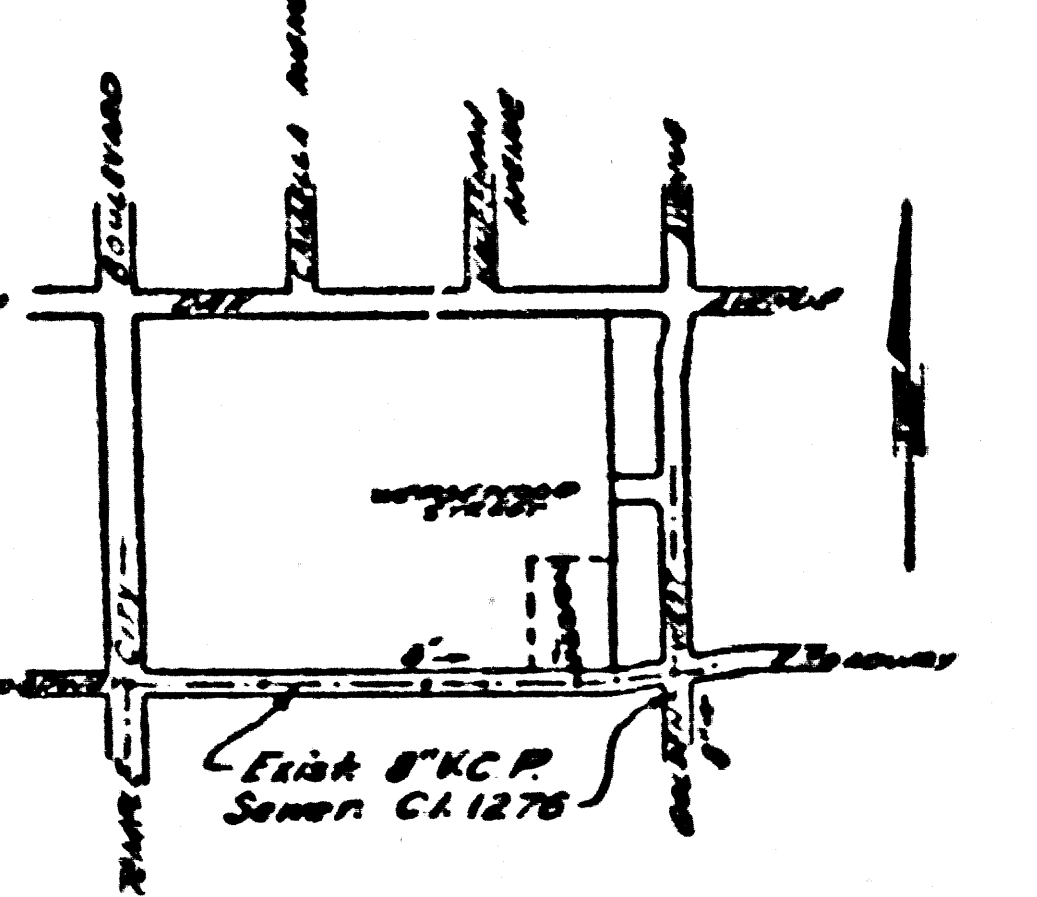


**TEMPLE CITY BLDG. DIST. NO 5**

- NOTE:**
1. Provide stakes on the property lines or property lines produced at right angles to the sewer line at the center line of each manhole.
  2. No representative of the County Engineer will survey or layout any portion of the work.
  3. The owner or his authorized representative shall furnish the County Engineer with grade sheets and stations for all house laterals and Y branches and shall provide stakes for them at their proper locations with stationing plainly marked. Any change in location shall be requested in writing by the owner or his representative.
  4. No revisions shall be made in these plans without the approval of the County Engineer.
  5. Use standard manhole frames and covers, S-a-117.
  6. Use standard strength pipe except as noted.
  7. Use cement mortar for all vitrified clay pipe joints.
  8. Resurface all trench within paved area to meet L.A. County Road Dept or California State Highway Dept. requirements in accordance with permit.
  9. Encase four feet of sewer at points of interference with poles, S-a-119.
  10. House laterals to be constructed with inverts at easement line 6 feet below grade of centerline of easement.
  11. All structures shall be brick sewer structures, S-a-104.
  12. For allowable leakage test, use Formula No. 1, Spec's., Sec. 51.
  13. Manhole tops in unimproved Right-of-Way to be 6" above finish grade.



BY W. H. MOORE, Civil Engineer, Temple City, California  
 1010 N. 1st St. S.W. Cor. 1st St. & 1st St.  
 SEP 25 1955 10 AM, 1955

NO CHARGE FOR CONNECTIONS  
 (Valid 12-13-55)

Checked 2-16-56 Moore

**P.C. 3785 PAGE 1**

PROFILE, ALIGNMENT AND GRADE OF  
**SANITARY SEWERS**  
 TO BE CONSTRUCTED IN  
**SANITARY SEWER EASEMENT**  
 NORTH OF BROADWAY AND 250 FEET  
 WESTERLY OF GOLDEN WEST AVENUE

PRIVATE CONTRACT NO. 3785  
 W. S. 44  
 1 SHEET  
 Scale: VERT. 1" = 4' HORIZ. 1" = 40' DECEMBER, 1955  
 PREPARED IN THE OFFICES OF:  
**M.W. FINLEY COMPANY**

Leon W. Moore  
 CIVIL ENGINEER  
 FOR LEGEND SEE PLAN NO. S-a-64

**NOTE:**  
 Grades to which the improvement is to be constructed are shown on plans and profiles. Grade points for top of curb, center line of streets, or center line of alleys are shown by circles on profiles. At all points between designated points the grade shall be established so as to conform to a straight line drawn between said designated points.  
 Elevations are in feet above U.S.C. & G.S. sea level datum of 1928.  
 This drawing and the data herein are hereby made a part of the specifications.  
 Work shall be constructed according to specifications on file in the office of the County Engineer and shall be prosecuted only in the presence of the County Engineer.  
 Before work can be started, the contractor must obtain a permit to excavate in County streets from the L.A. County Road Dept., 108 W. 2nd St., and make a deposit with the County Engineer, Room 324, 253 South Broadway, sufficient to cover the cost of construction inspection and record plans.  
 Approval of this plan by the County of Los Angeles does not constitute a representation as to the accuracy of the location of or the existence or non-existence of any underground utility pipe, or structure within the limits of this project. This note applies to all sheets.  
 If work is to be done in a State highway, a permit must be obtained from the State of California, Division of Highways, 120 South Spring Street.  
**COUNTY OF LOS ANGELES, CALIFORNIA**  
 Approved, John A. Lambie, County Engineer Approved, A. M. Bower  
 A. P. Collins CIVIL ENGINEER  
 CHIEF DESIGNER SAN. DIST. NO. 15  
 Checked by: P. B. Kuhn 3-8-56  
 Office of County Engineer, Dep. E. & H., 7860