

790  
2  
225 AS  
51

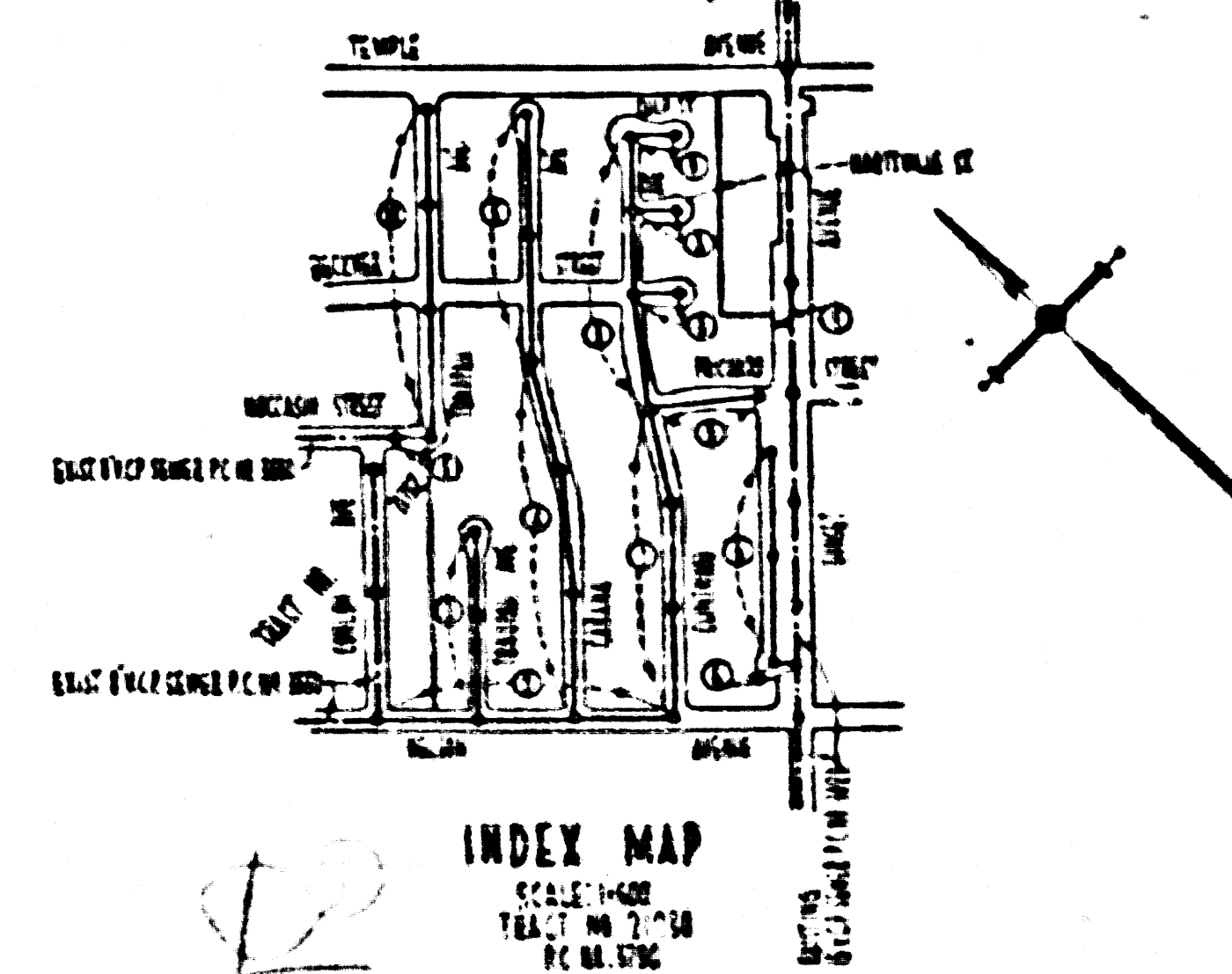
REINFORCED  
5/8" DIA. STEEL BARS, 12" ON CENTER  
5/8" DIA. STEEL BARS, 12" ON CENTER  
5/8" DIA. STEEL BARS, 12" ON CENTER

TEA LINE  
PUENTE BUILDING DISTRICT NO. 2

**NOTE:**  
Provide stakes on the property lines or property lines produced at right angles to the cover line of the center line of each manhole.  
No representative of the County Engineer will survey or layout any portion of the work.  
The owner or his authorized representative shall furnish the County Engineer with grade sheets and stations for all house laterals and Y branches and shall provide stakes for them at their proper locations with stationing plainly marked. Any change in location shall be requested in writing by the owner or his representative.  
No revisions shall be made in these plans without the approval of the County Engineer.  
1. Use standard manhole frames and covers, S-a-117.  
2. Use standard strength pipe except as noted.  
3. Use cement mortar for all vitrified clay pipe joints.  
4. Resurface all trench within paved area to meet L.A. County Road Dept. or California State Highway Dept. requirements in accordance with permit.  
5. Excise four feet of sewer at points of interference with poles, S-a-119.  
6. House laterals to be constructed with laterals at property line \_\_\_\_\_ feet below curb grade except as noted.  
7. All structures shall be brick sewer structures, S-a-184.  
8. For allowable leakage test, see Formula No. \_\_\_\_\_, Spec'n. Sec. 81.  
9. Manhole tops in unimproved Rights-Of-Way to be 6" above finished grade.

CONNECTION CHARGES  
AS INDICATED  
*Revised 3-9-54*

SHEET NO.	MSG. NO.
1	67244
2	67245
3	11



PROFILE, ALIGNMENT AND GRADE OF  
SANITARY SEWERS  
TO BE CONSTRUCTED IN

P.C. 3790  
PAGE 1

22980

TRACT NO. 21230

PRIVATE CONTRACT NO. 3790  
W. S. (38)  
(3) SHEETS

Scale: VERT. 1" = 4'  
HORIZ. 1" = 40' DEC. 1955

PREPARED IN THE OFFICES OF  
TED M. WALSH

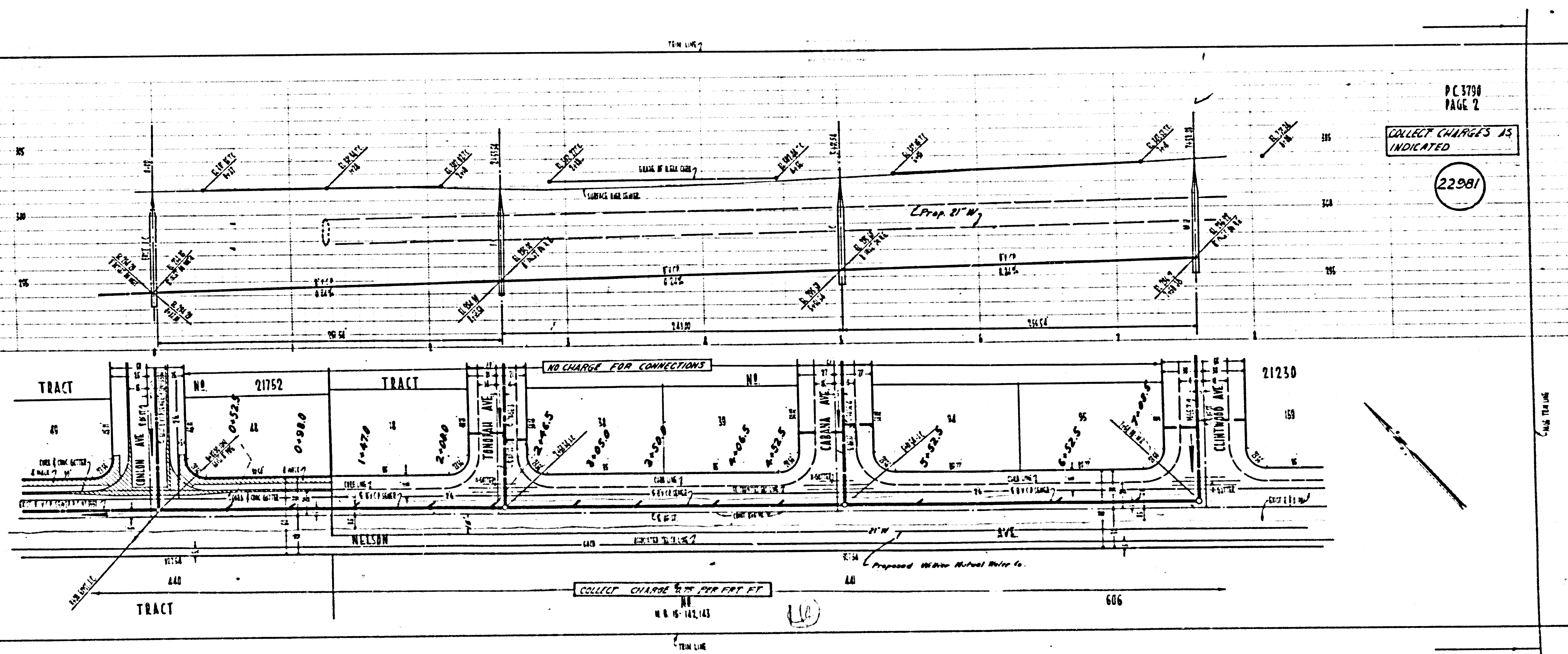
*Roy L. Klema*  
C. E. No. 5456

FOR LEGEND SEE PLAN NO. S-a-64

**NOTE:**  
Grades to which this improvement is to be constructed are shown on plans and profiles. Grade points for top of curb, center line of streets, or center line of alleys are shown by circles on plans. All points between designated points the grade shall be established so as to conform to a straight line drawn between said designated points.  
Elevations are in feet above U.S.C. and G.S. mean sea level datum of 1929.  
This drawing and the data hereon are hereby made a part of the specifications.  
Work shall be constructed according to specifications on file in the office of the County Engineer and shall be prosecuted only in the presence of the County Engineer.  
Before work can be started, the contractor must obtain a permit to excavate in County streets from the L.A. County Road Dept., 109 W. 2nd St. and make a deposit with the County Engineer, room 341 153 South Broadway, sufficient to cover the cost of construction inspection and record plans.  
Approval of this plan by the County of Los Angeles does not constitute a representation as to the accuracy of the location of or the existence or non-existence of any underground utility, pipe, or structure within the limits of this project. This note applies to all sheets.  
If work is to be done in a State Highway, a permit must be obtained from the State of California, Division of Highways, 128 South Spring Street.

COUNTY OF LOS ANGELES, CALIFORNIA  
Approved: John B. Lippas, County Engineer  
*A. P. Collins*  
CIVIL ENGINEER, C.E. No. 1071, No. 9  
Approved: A. M. Evans  
*A. M. Evans*  
CIVIL ENGINEER, C.E. No. 1071, No. 9  
Checked by: *R. L. Klema*  
Office of County Engineer, Dep. C. E. No. 7868

SEWERS IN TRACT NO. 21230  
PAGE 1



P.C. 3790  
PAGE 2

COLLECT CHARGES AS INDICATED

22981

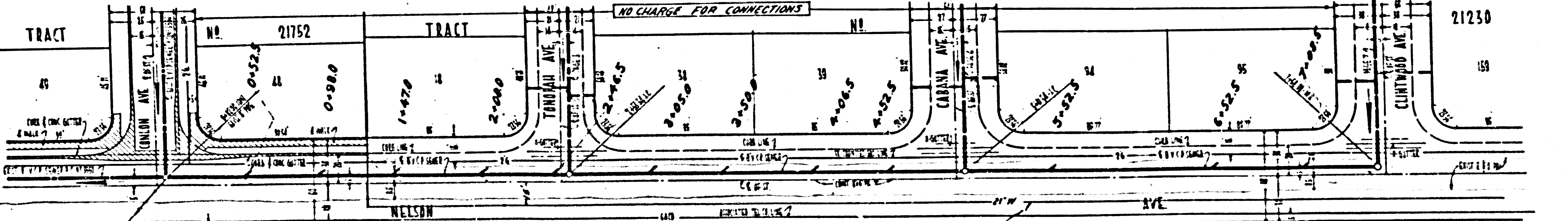
NO CHARGE FOR CONNECTIONS

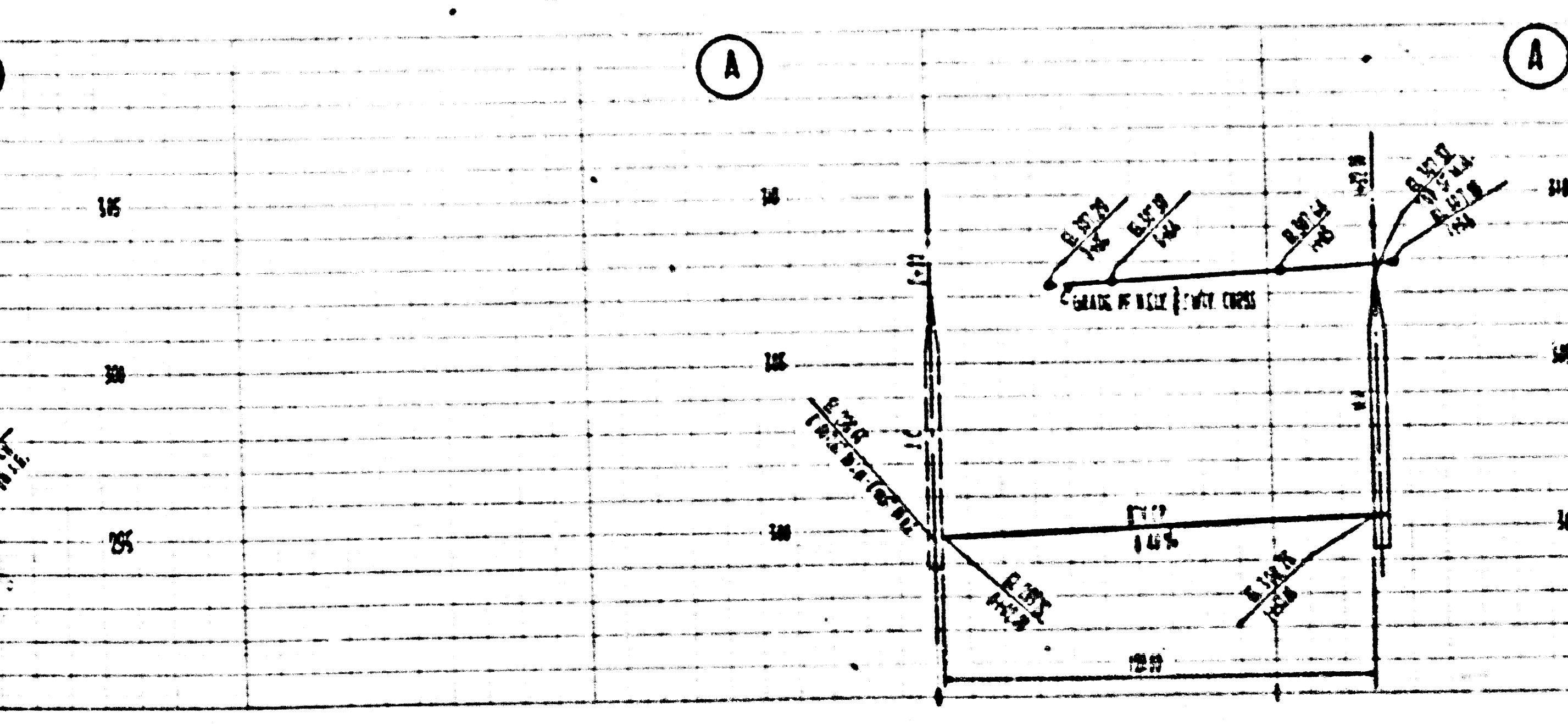
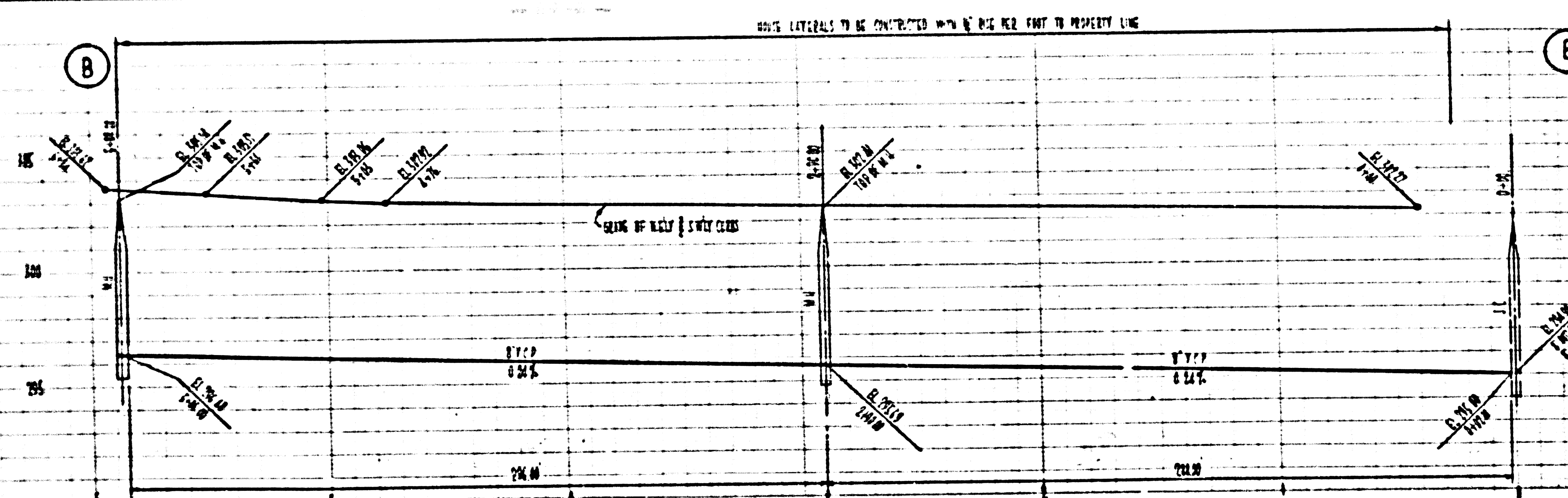
COLLECT CHARGE \$1.75 PER FEET FT

N. R. 15-142,143

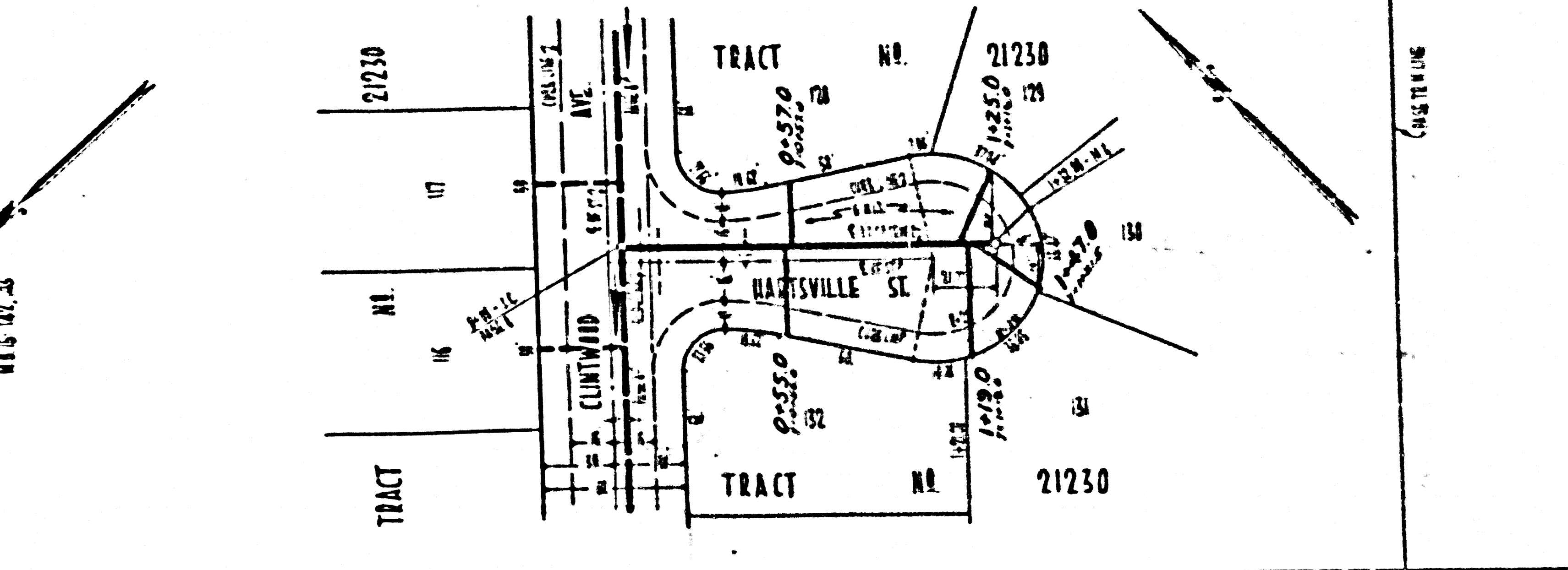
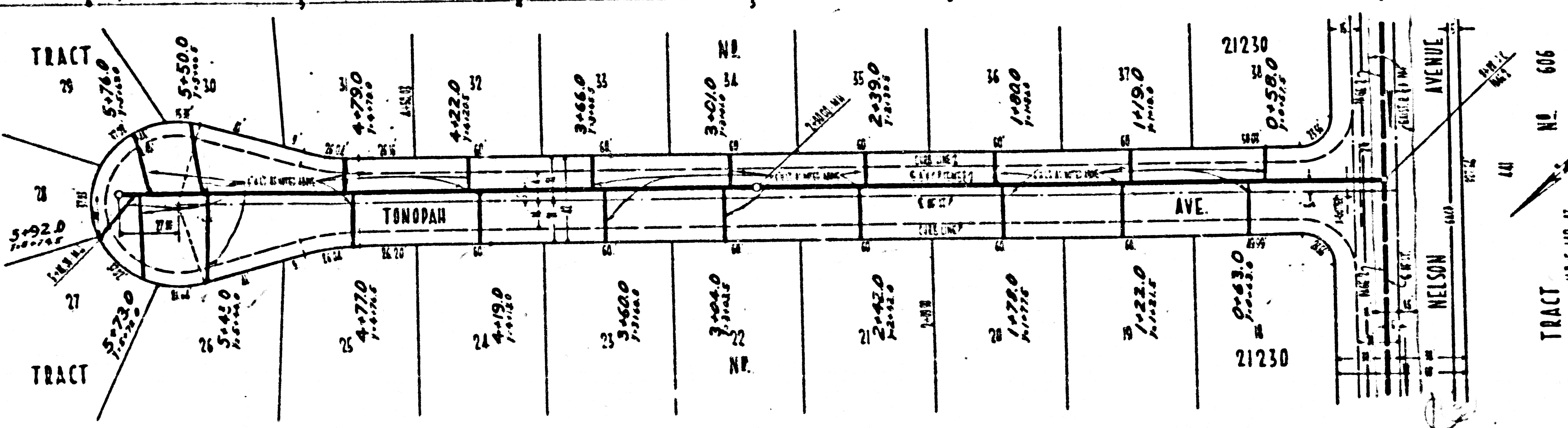
606

Proposed Water Meter Co.





P.C. 3790  
PAGE 3  
NO CHARGE FOR CONNECTIONS  
22982



TRACT NO. 606  
N.E. 1/4, 35

CLINTWOOD AVE

TELEPHONE LATERALS TO BE CONSTRUCTED WITHIN ONE FEET TO PROPERTY LINE

CURB OF 10' & 12' C&N

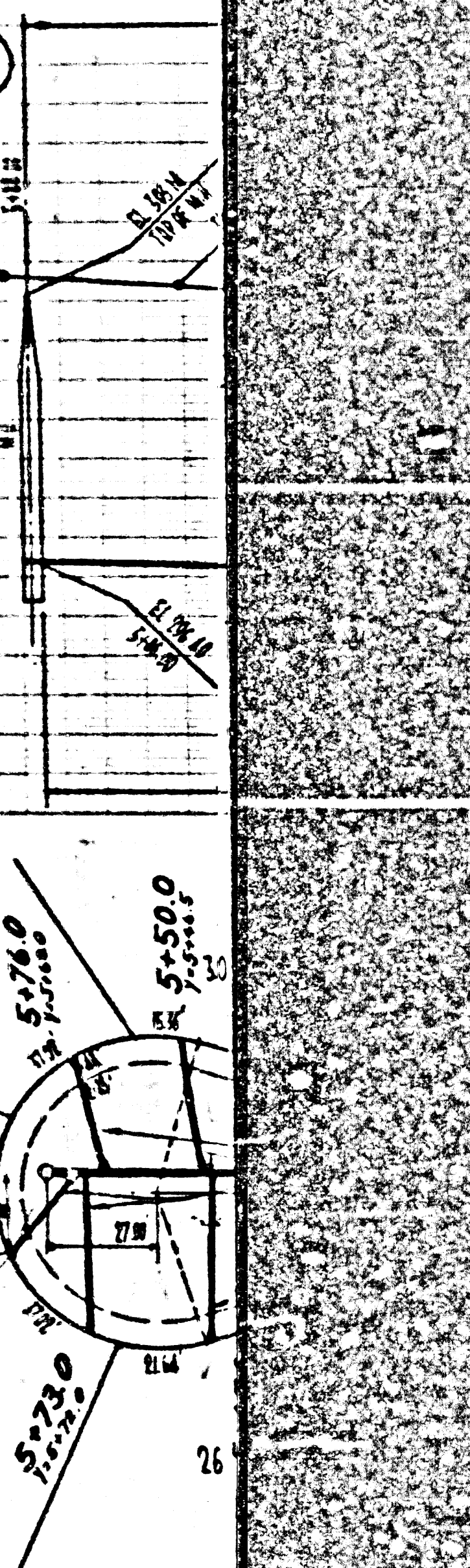
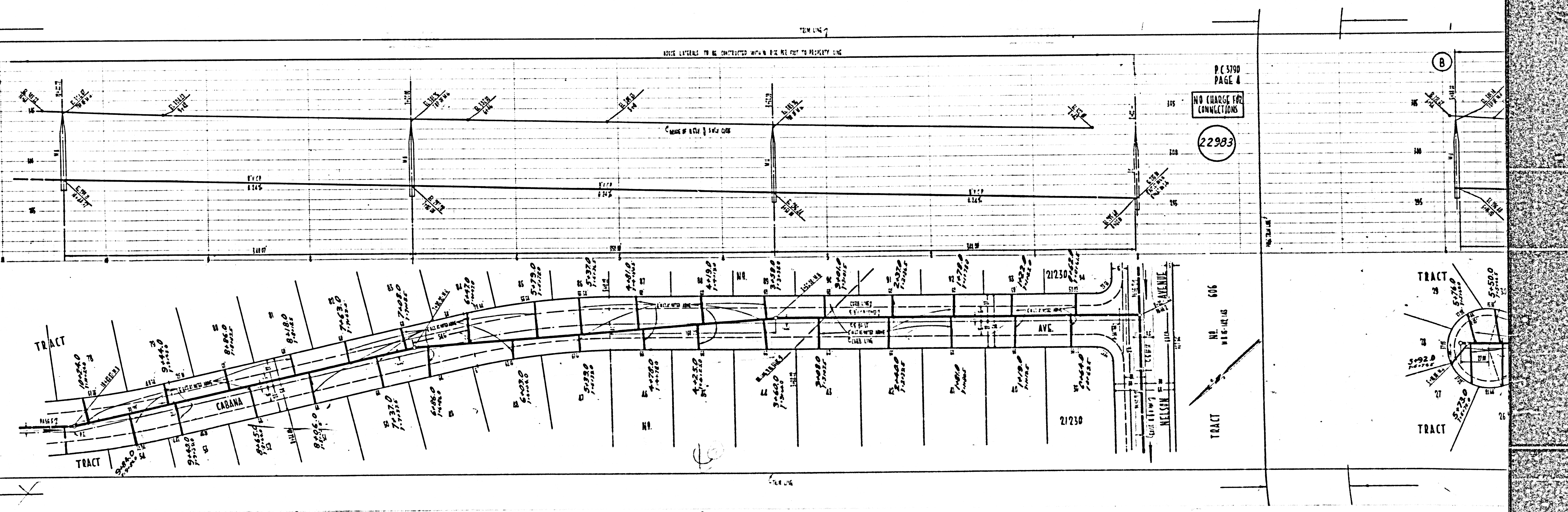
P.C. 3790  
PAGE 4

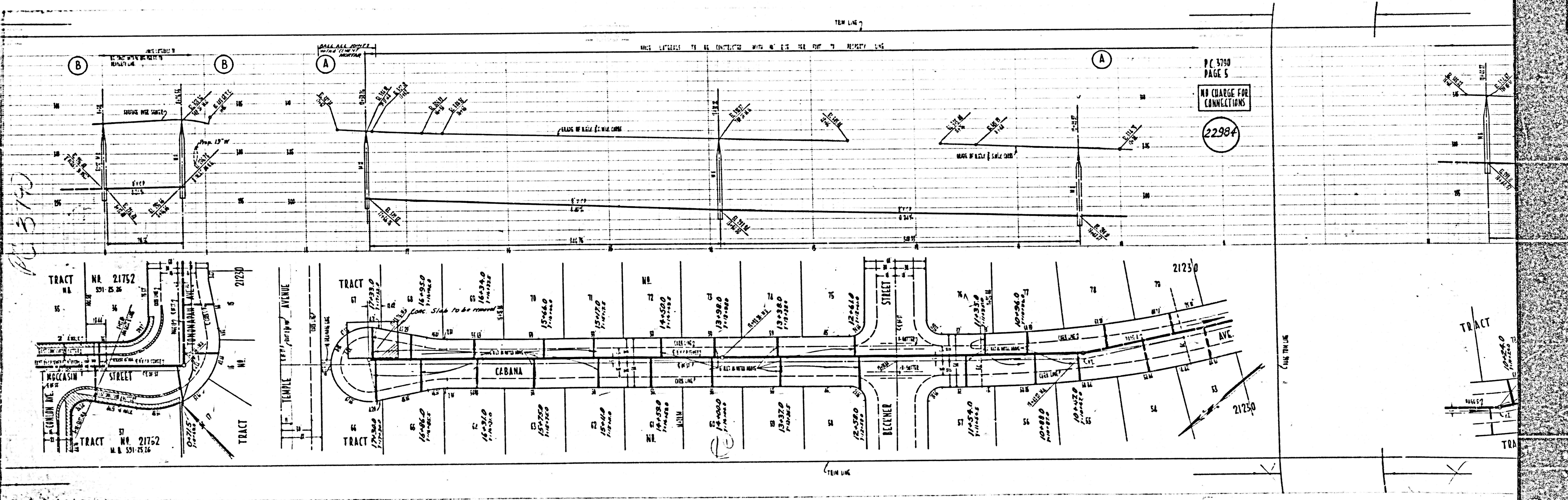
NO CHARGE FOR CONNECTIONS

22983

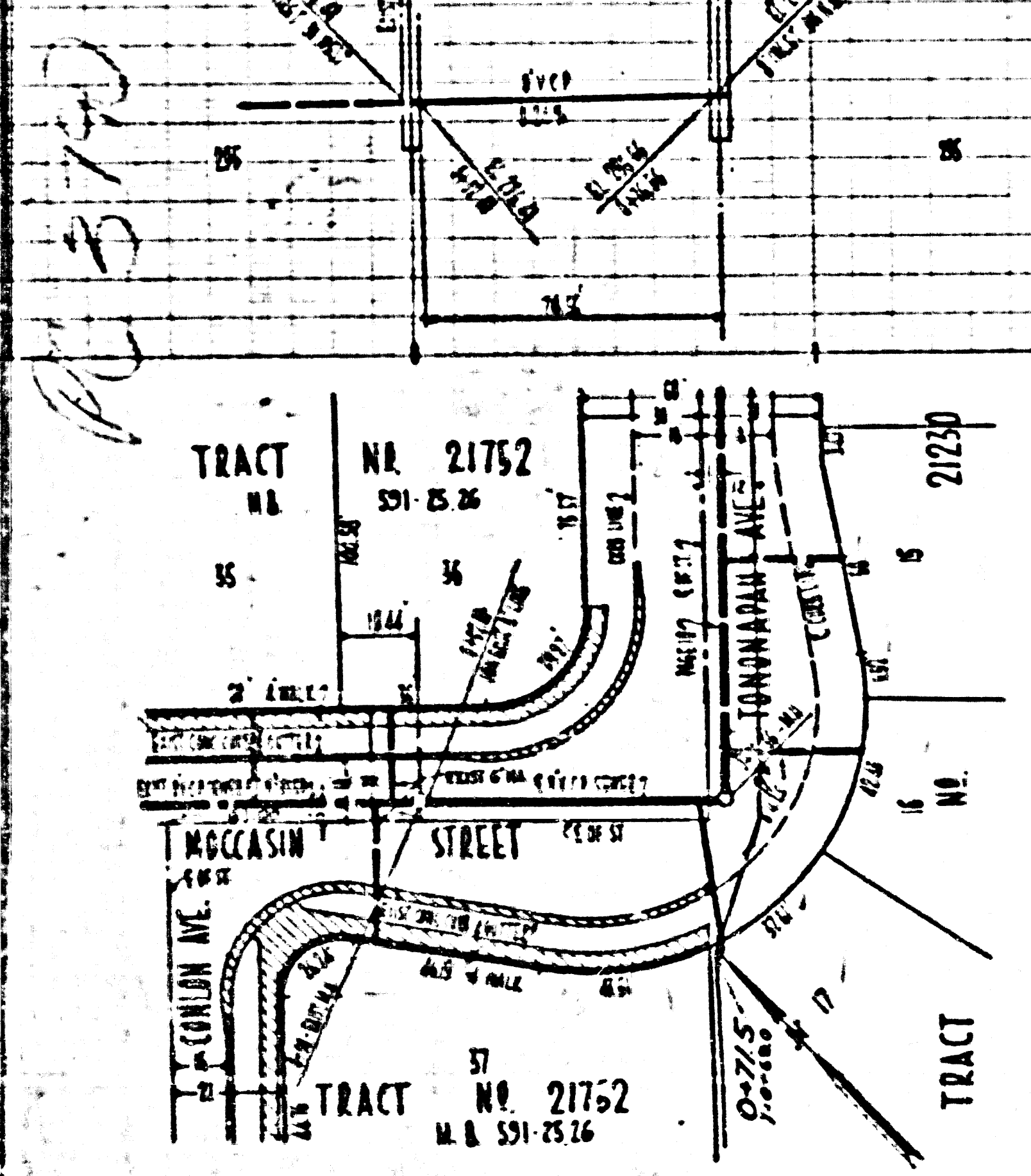
NO. 606  
N. 16' A.S. 14.5

TRACT





P.C. 3790  
 PAGE 5  
 NO CHARGE FOR CONNECTIONS  
 22984



P.C. 3790  
PAGE 7

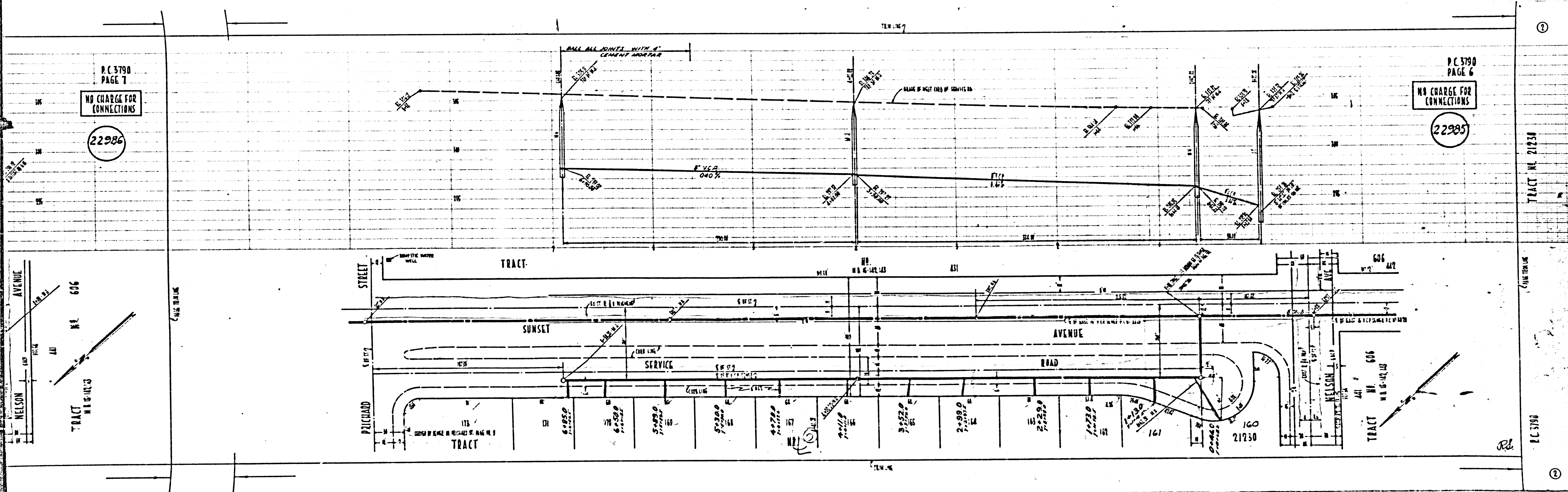
NO CHARGE FOR  
CONNECTIONS

22986

P.C. 3790  
PAGE 6

NO CHARGE FOR  
CONNECTIONS

22985



①

TRACT NO. 21230

②

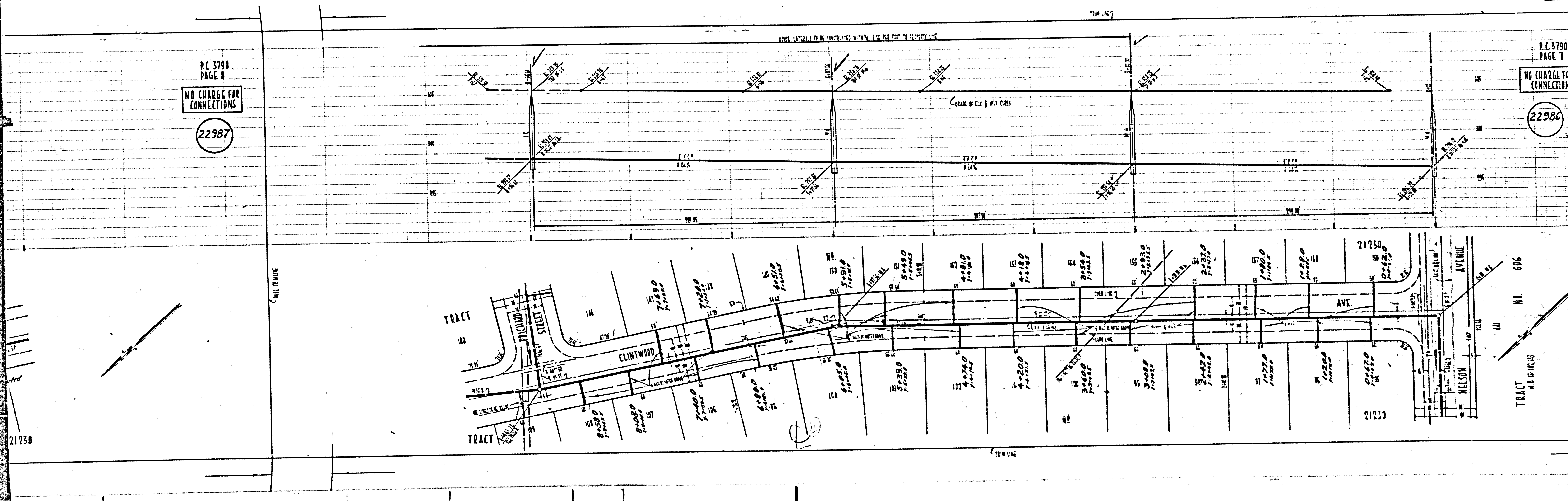
P.C. 3790

TRACT NO. 21230

②

P.C. 3790  
PAGE 8  
NO CHARGE FOR CONNECTIONS  
22987

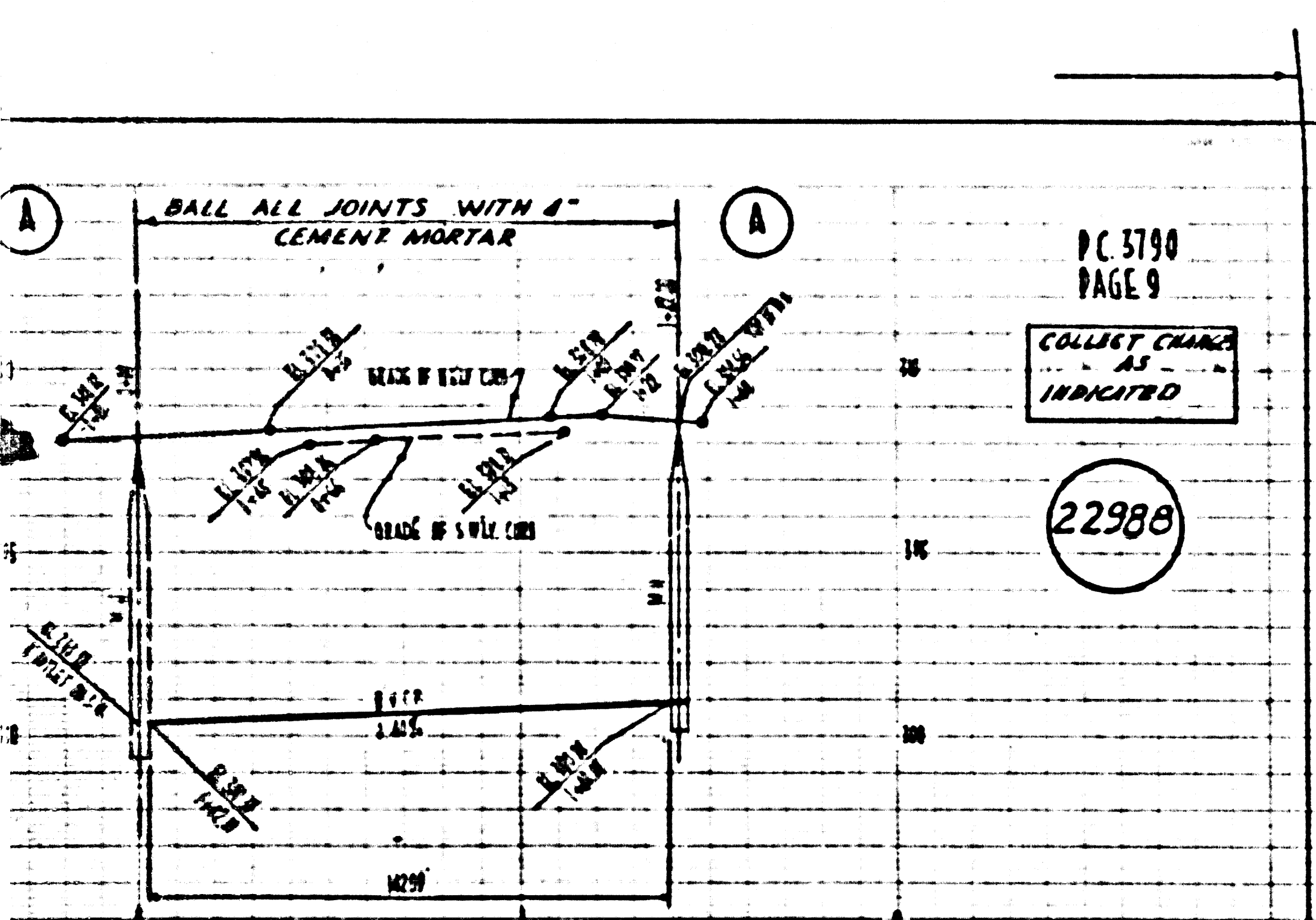
P.C. 3790  
PAGE 7  
NO CHARGE FOR CONNECTIONS  
22986



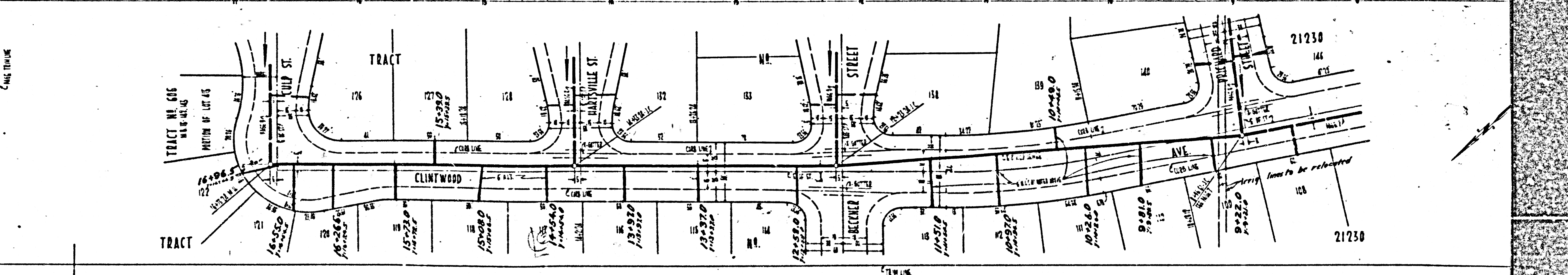
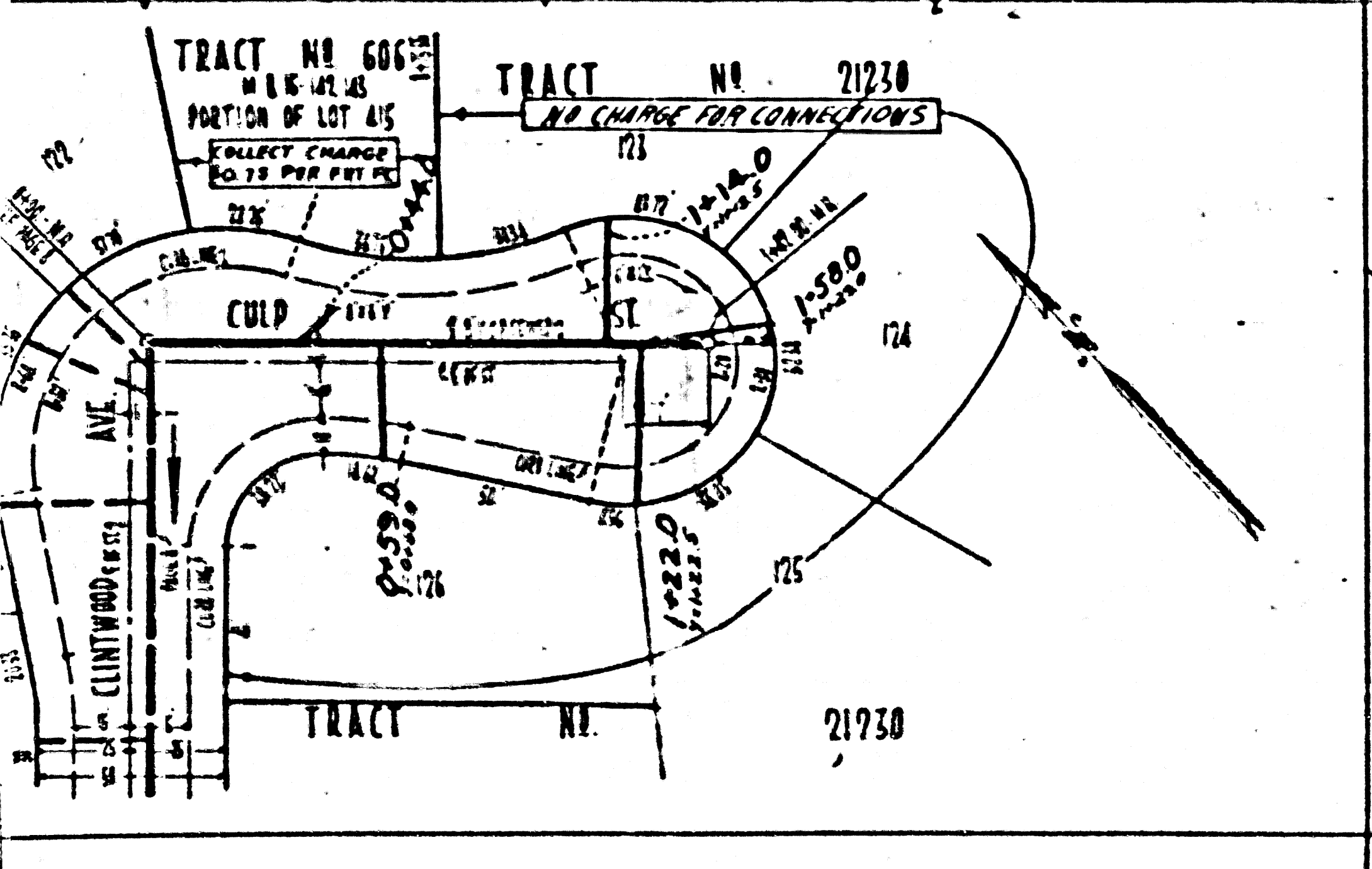
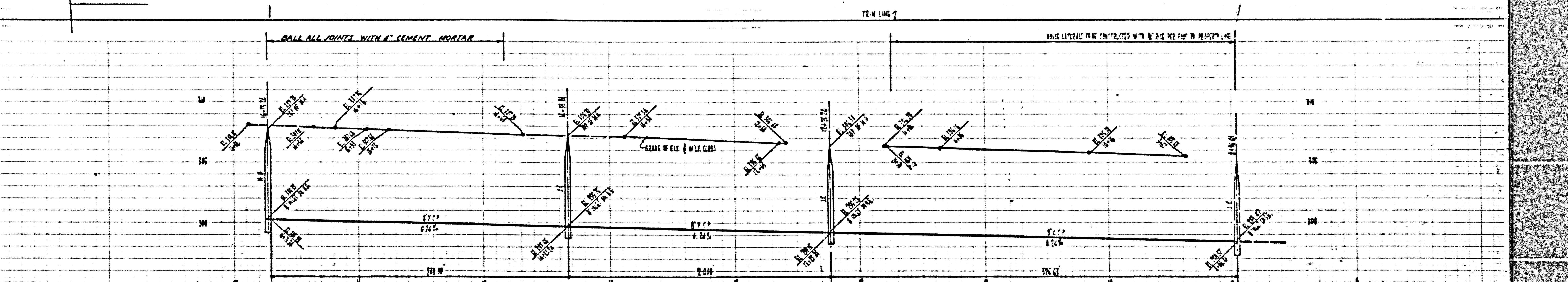
21230

21230

TRACT  
N 1/2  
606

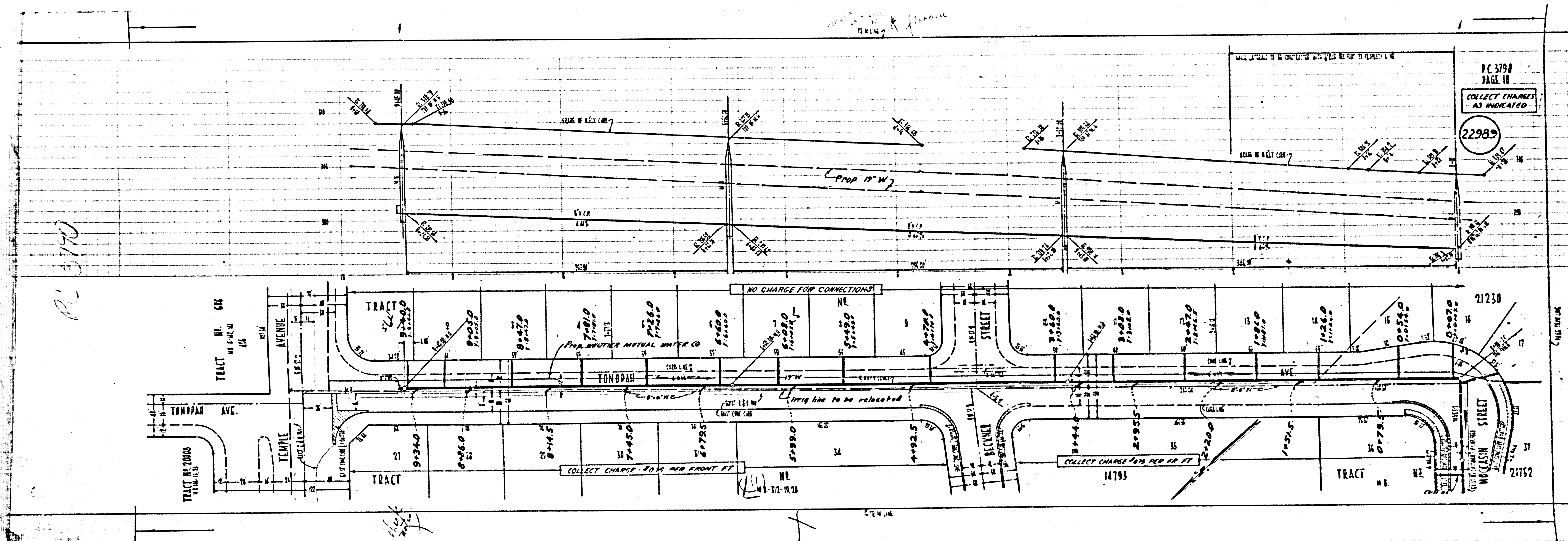


PC 3790  
PAGE 9  
COLLECT CHARGE AS INDICATED  
2298









PC 370

P.C. 3790  
PAGE 10

COLLECT CHARGES  
AS INDICATED

22989

NO CHARGE FOR CONNECTIONS

COLLECT CHARGE - 80% PER FRONT FT.

COLLECT CHARGE - 61% PER FR. FT.

FOR WHITTIER MUTUAL WATER CO.

IRrig line to be relocated

NO. 14793

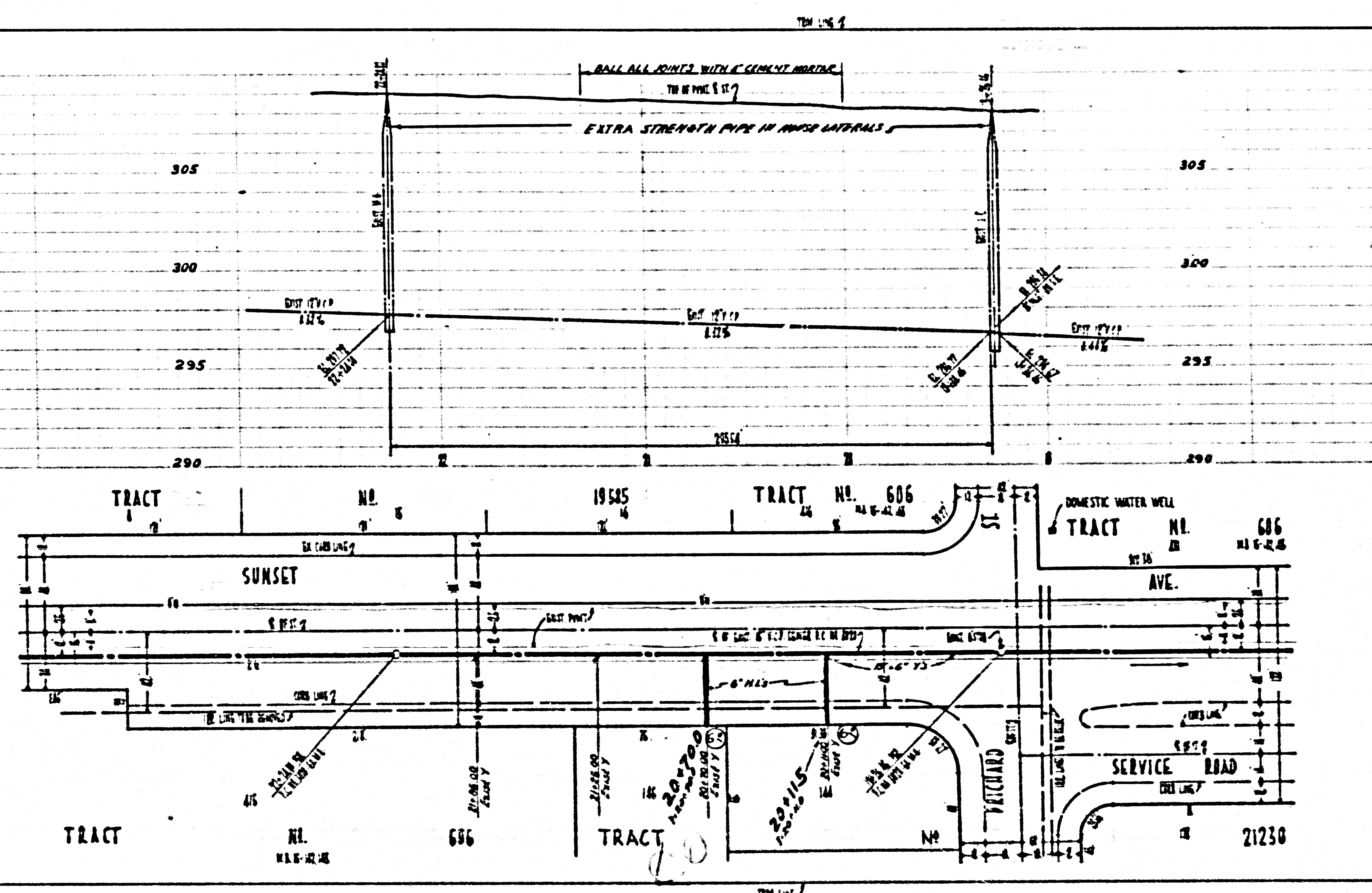
21230

21752

CONTINUE

CONTINUE

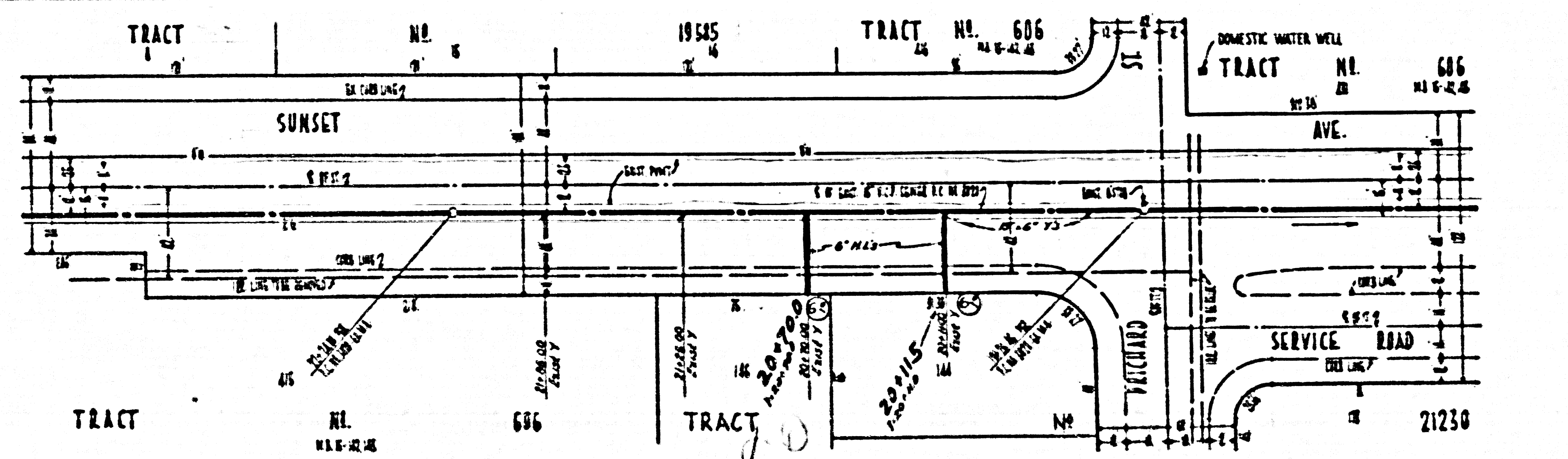
Office 2190



P.C. 3790  
PAGE II

NO CHARGE FOR  
CONNECTIONS

22990



3

TRACT NO. 21230

P.C. 3790  
OFFICE