

PC 3793
PAGE 2

NO CHARGE
FOR CONNECTIONS

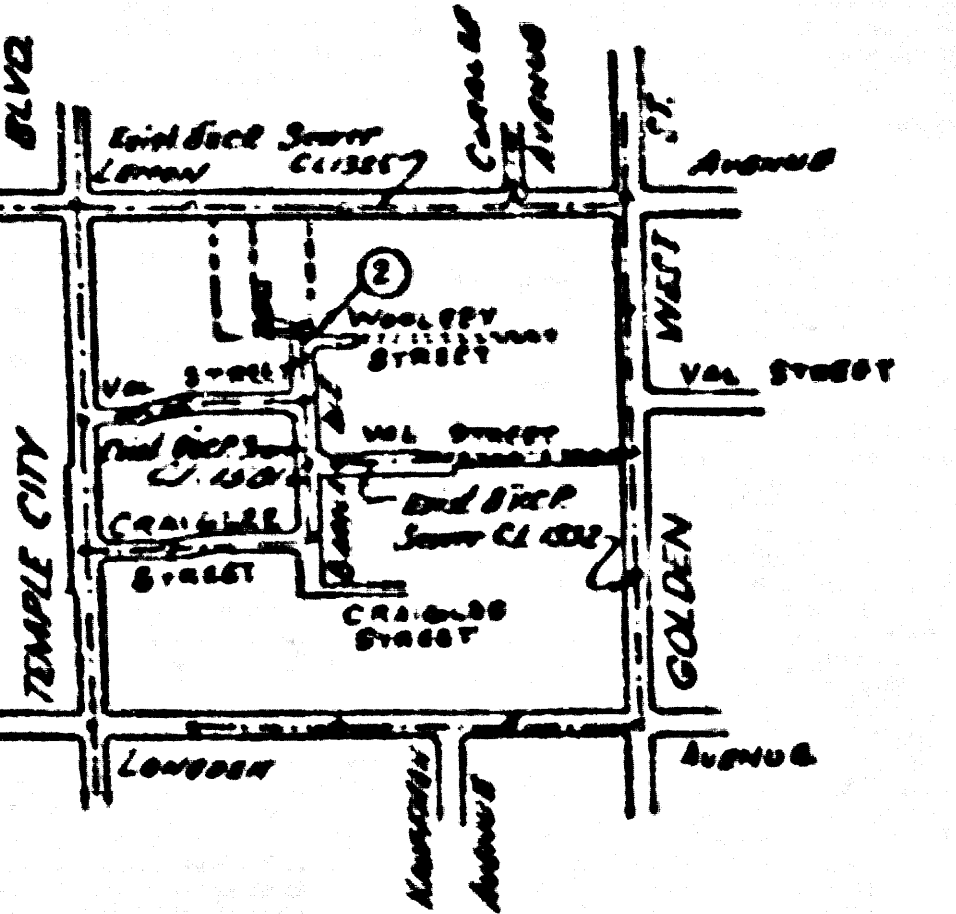
22,331

PLAN 22 330 21 443 403 (Sanitation) (18-10-54)
Temple City Boulevard West Side of Temple
Street
All Sides in CO. S. 30' of Road of Temple St.

TEMPLE CITY BLDG. DIST. NO. 5

NOTE:

- Provide station on the property lines or property lines produced at right angles to the cover line of the center line of each manhole.
- No representative of the County Engineer will survey or layout any portion of the work.
- The owner or his authorized representative shall furnish the County Engineer with grade sheets and stations for all house laterals and Y branches and shall provide station for them at their proper locations with stationing plainly marked. Any change in location shall be requested in writing by the owner or his representative.
- No variations shall be made in these plans without the approval of the County Engineer.
1. Use standard manhole frames and covers, S-a-117.
 2. Use standard strength pipe except as noted.
 3. Use cement mortar for all vitrified clay pipe joints.
 4. Surfacing all trench within paved area to meet L.A. County Road Dept. or California State Highway Dept. requirements in accordance with permit.
 5. Excise four feet of sewer at points of interference with poles, S-a-119.
 6. House laterals to be constructed with inverts at edge of the Easement Line 6' below Surface over Sewer except as noted.
 7. All structures shall be brick cover structures, S-a-104.
 8. For allowable leakage test, see Formula No. 1, Spec's, Sec. 81.
 9. Manhole tops in unimproved Right-Of-Way to be level with ground surface.



NO CHARGE
FOR CONNECTIONS
T. L. 3-27-56

INDEX MAP
Sanitary Sewer System
Scale 1"=100'
PC 3793

Checked 3-29-56 [Signature]

Fire Line

PROFILE, ALIGNMENT AND GRADE OF
SANITARY SEWERS
TO BE CONSTRUCTED IN

In RIW North of Borela Ave.

PRIVATE CONTRACT NO. 3793
W. S. 44
ONE SHEETS

Scale: VERT. 1"=4'
HORIZ. 1"=40'
DEG. 1955
PREPARED IN THE OFFICE OF
M. W. FINLEY

FOR LEGEND SEE PLAN NO. S-a-44

NOTE:

Grades to which this improvement is to be constructed are shown on plans and profiles. Grade points for top of curb, center line of streets, or center line of alleys are shown by circles on profiles. At all points between designated points the grade shall be established so as to conform to a straight line drawn between said designated points.

Elevations are in feet above U.S.C. & G.S. See Level Datum of 1929.

This drawing and the data hereon are hereby made a part of the specifications.

Work shall be constructed according to specifications on file in the office of the County Engineer and shall be prosecuted only in the presence of the County Engineer.

If any work can be started, the contractor must obtain a permit to excavate in County streets from the L.A. County Road Dept., 106 W. 2nd St. and make a deposit with the County Engineer, Room 210 New American Bldg. 257 1/2 Broadway, sufficient to cover the cost of construction inspection and record plans.

Approval of this plan by the County of Los Angeles does not constitute a representation as to the accuracy of the location or the existence or non-existence of any underground utility, pipe, or structure within the limits of this project. This note applies to all sheets.

If work is to be done in a State Highway, a permit must be obtained from the State of California, Division of Highways, 120 South Spring Street.

COUNTY OF LOS ANGELES, CALIFORNIA

Approved, John A. Lambie, County Engineer

Approved, A. M. Rave
CHIEF ENGINEER SAN DIST. NO. 125
[Signature]
Office Engineer

Checked by [Signature] 3-27-56
Office of County Engineer, Box C. & No. 7860.

PC 3793
PAGE 1

22,330

(2)

SANITARY SEWER EASEMENT

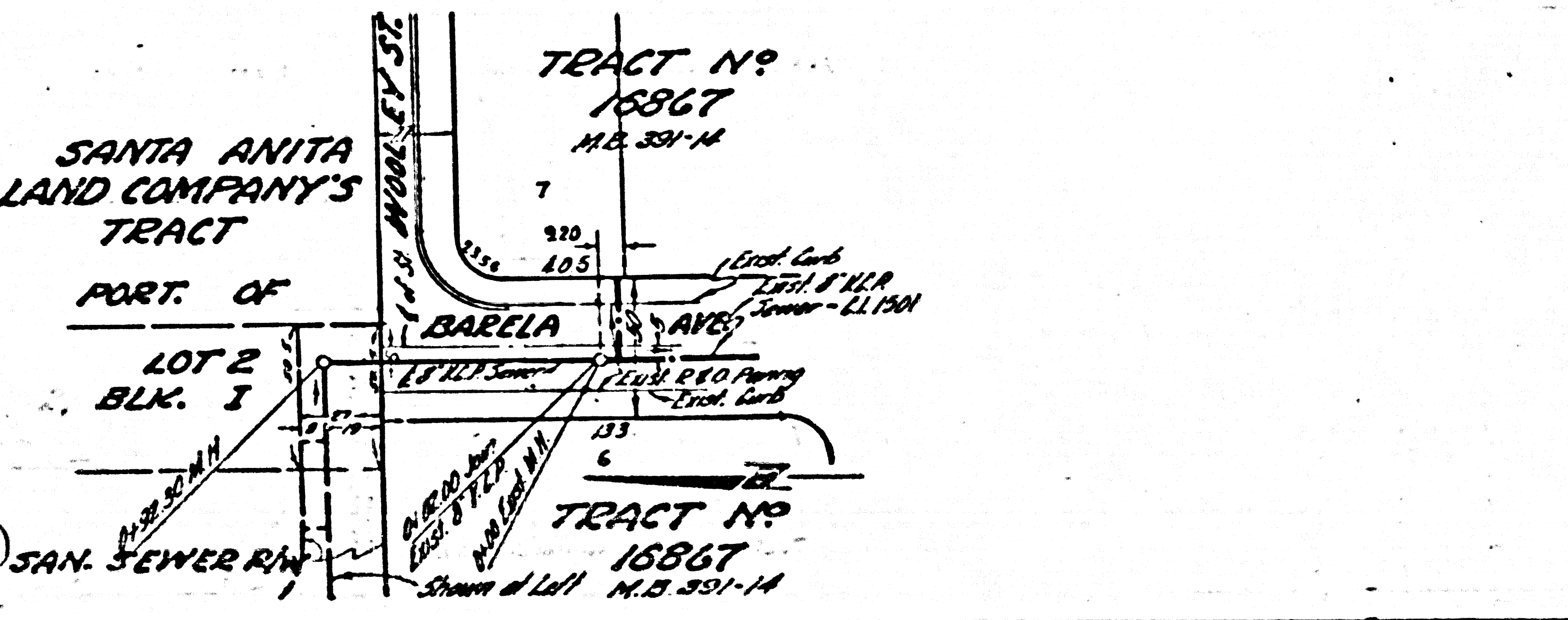
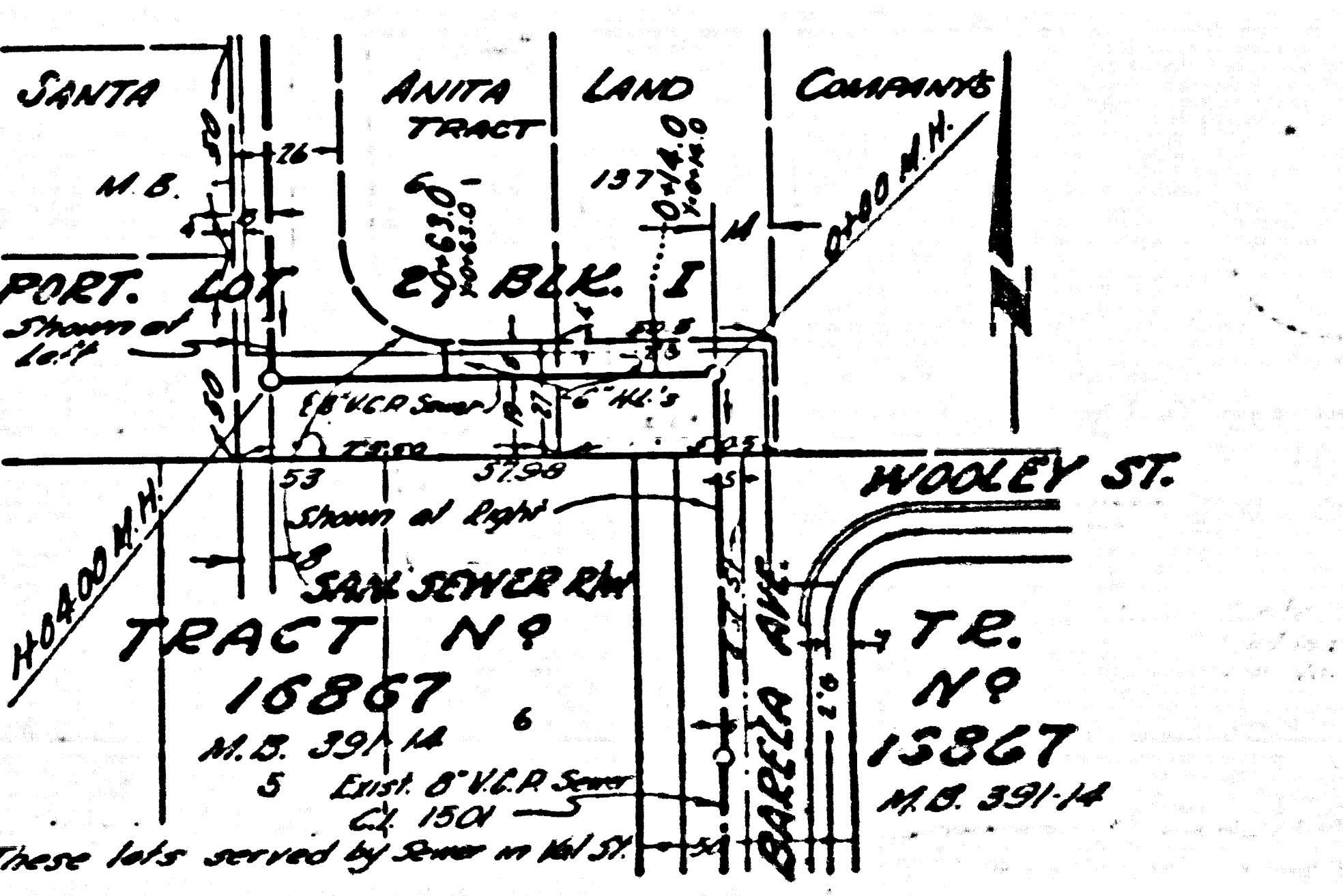
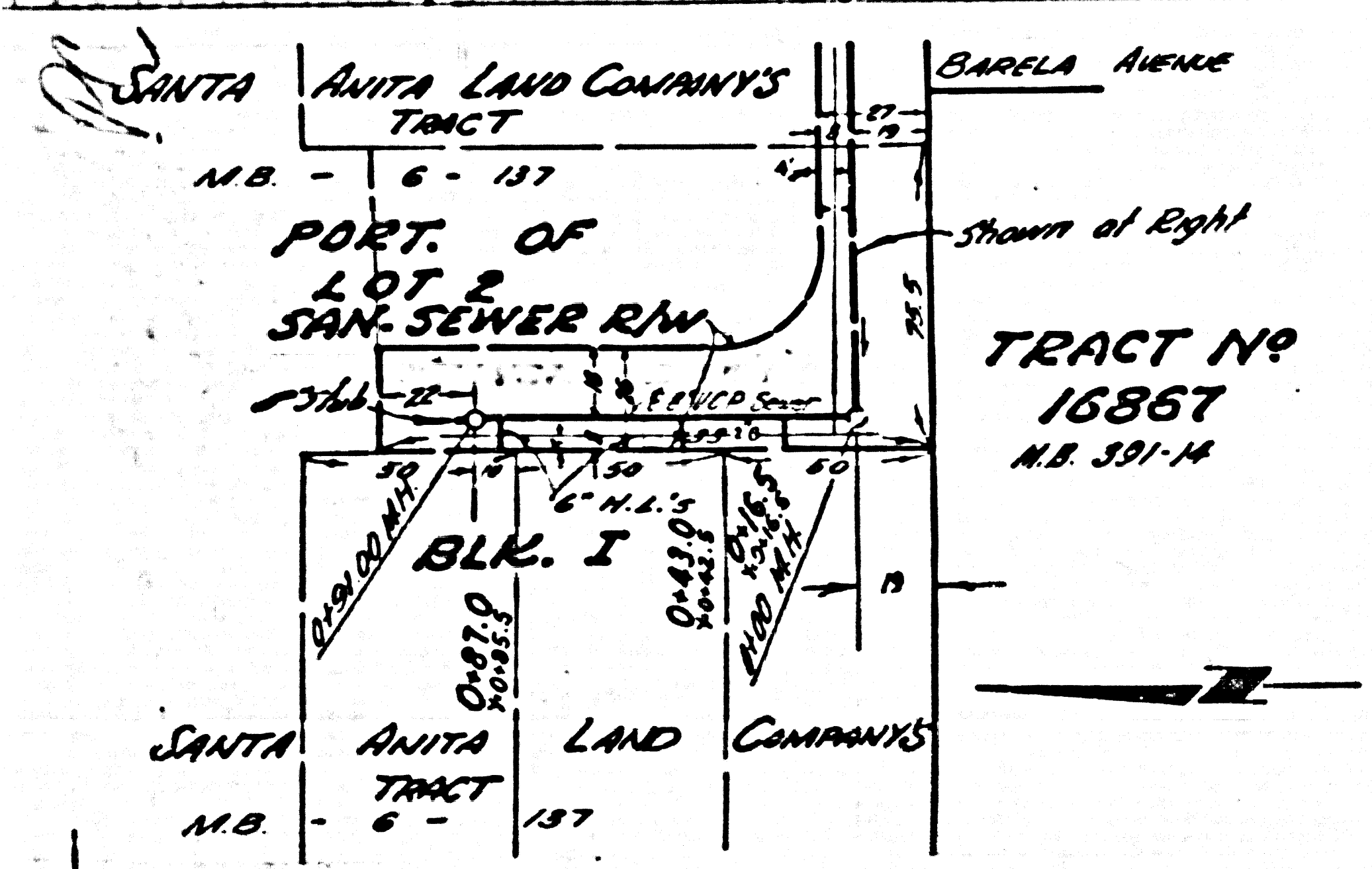
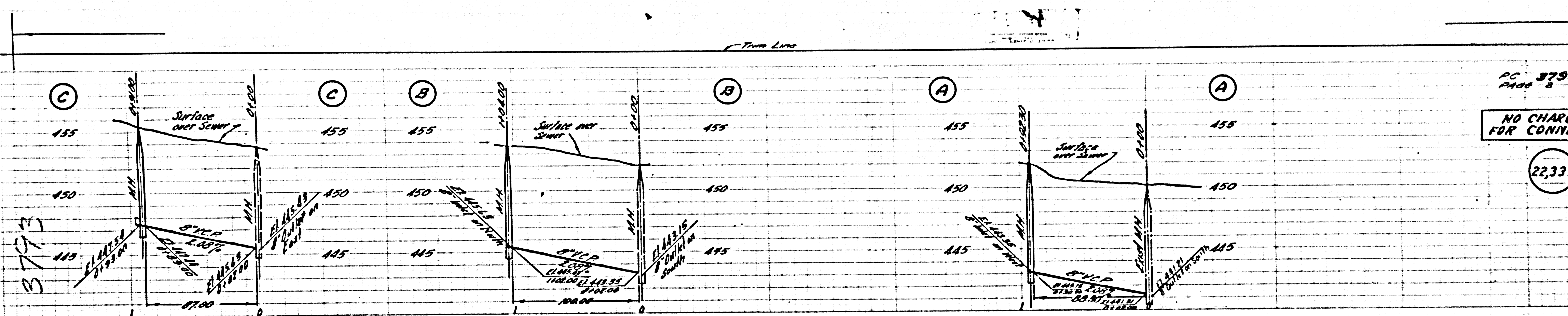
PC 3793
PAGE 2

Thin Line

PC 3793
PAGE 2

NO CHARGE
FOR CONNECTIONS

22,331



Thin Line