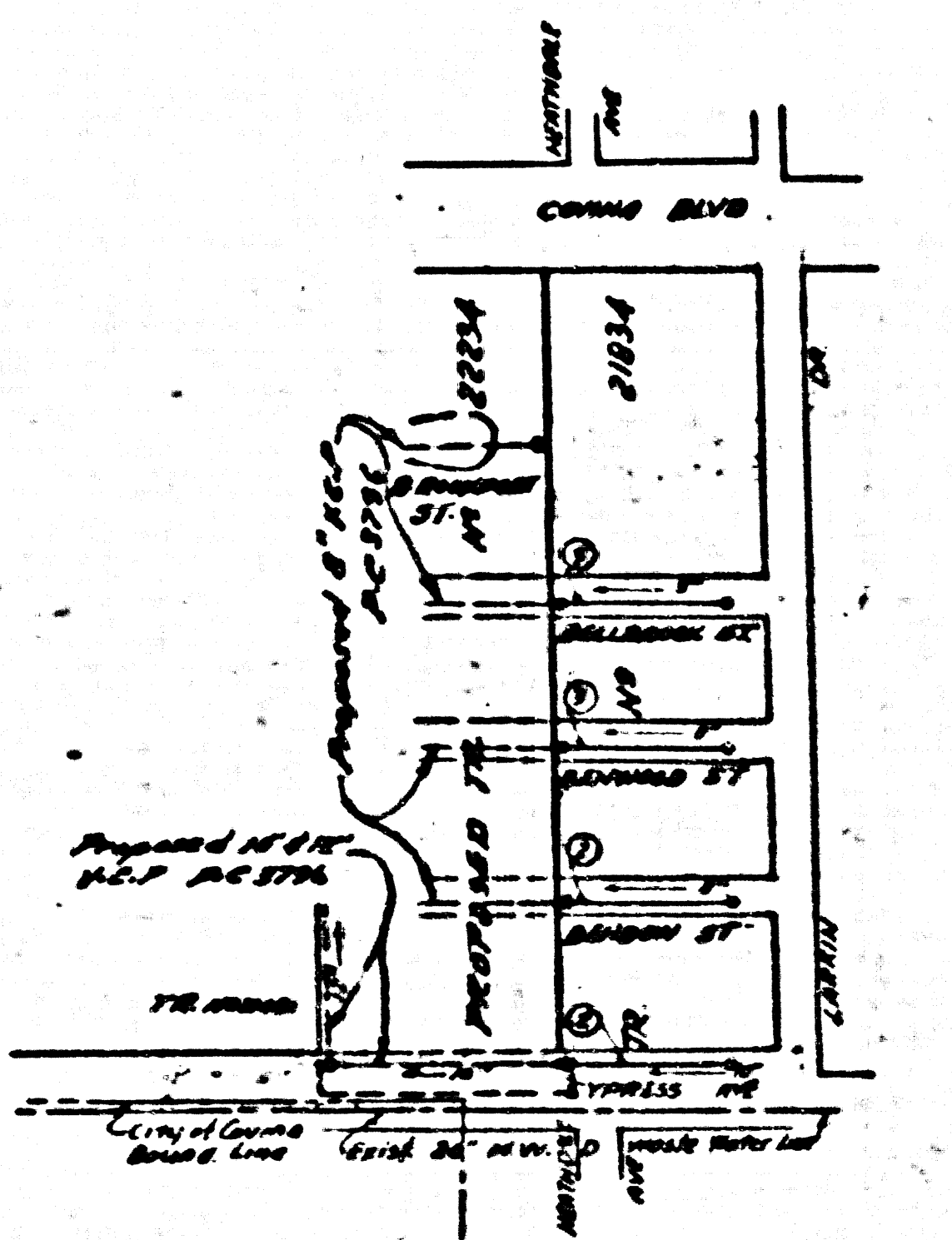


BENCH MARK: 56.67
 1.17' 15" W. of Curb Ref. C.S.W.
 Corner of Elsworth Way & Curson
 Ave. Elev. 54.570



INDEX MAP
 SCALE 1"=300'
 TRACT N° 21834
 P.C. 3795

SAN DIMAS Bldg. Dist. No. 10

- NOTE:
- Provide stakes on the property lines or property lines produced at right angles to the sewer line at the center line of each manhole.
- No representative of the County Engineer will survey or layout any portion of the work. The owner or his authorized representative shall furnish the County Engineer with grade sheets and stations for all house laterals and Y branches and shall provide stakes for them at their proper locations with stationing plainly marked. Any change in location shall be requested in writing by the owner or his representative.
- No revisions shall be made in these plans without the approval of the County Engineer.
1. Use standard manhole frames and covers, S-o-117, except as noted.
 2. Use standard strength pipe except as noted.
 3. Use cement mortar for all vitrified clay pipe joints.
 4. Resurface all trench within paved area to meet L.A. County Road Dept. or Calif. State Highway Dept. requirements in accordance with permit.
 5. Excuse four feet of sewer at points of interference with poles, S-o-119.
 6. House laterals to be constructed with inverts at property line..... feet below curb grade except as noted.
 7. All structures shall be brick sewer structures, S-o-104.
 8. For allowable leakage test, see Formula No..... Spec's, Sec. 51.
 9. Manhole tops in unimproved Rights-of-Way to be 6" above finish grade.
 10. Permit to Excavate to be secured from the City of Los Angeles or the City of Garden before the start of work. The permit shall be obtained from the City of Los Angeles or the City of Garden before the start of work.

SHEET NO	PAGES
1	1-3
2	4-5

COLLECT CHARGES AS INDICATED
L. Lester 4-27-56

APPROVED
 CITY OF LOS ANGELES
[Signature]
 4-27-56

1. REVISIONS SHEETS 1-3
 2. DELETION OF SEWER SHEETS 4 & 5
- Checked by *S.V. Orinda 4-17-56*
 OFFICE OF COUNTY ENGINEER, 700 C.E. No. 7860

checked 10-3-56 *McLaren*

PROFILE, ALIGNMENT AND GRADE OF
 SANITARY SEWERS
 TO BE CONSTRUCTED IN
 TRACT N° 21834

P. C. 3795
 PAGE 1

PRIVATE CONTRACT NO. 3795
 W. S. 47
 DECEMBER 1955

Scale: *VERT. 1"=4'*
HORIZ. 1"=40'

PREPARED BY THE OFFICE OF
 KABL TUTTLE ENGINEERING CO.
 by *John R. Tuttle*
 Reg. C. E. No. 8618

FOR LEGEND SEE PLAN NO. S-o-64

23,501
 (3)

NOTE:

Grades to which this improvement is to be constructed are shown on plans and profiles. Grade points for top of curbs, center line of streets, or center line of alleys are shown by circles on profiles. At all points between designated points the grade shall be established so as to conform to a straight line drawn between said designated points.

Elevations are in feet above U.S.C. and M.S. Sea Level Datum of 1929.

This drawing and the data hereon are hereby made a part of the specifications.

Work shall be constructed according to specifications on file in the office of the County Engineer and shall be prosecuted only in the presence of the County Engineer.

Before work can be started, the contractor must obtain a permit to excavate in County streets from the L.A. County Road Dept., 108 W. 2nd St., and make a deposit with the County Engineer, Room 3204, 555 1/2 Broadway, sufficient to cover the cost of construction inspection and record plans.

Approval of this plan by the County of Los Angeles does not constitute a representation as to the accuracy of the location of or the existence or non-existence of any underground utility, pipe, or structure within the limits of this project. This note applies to all sheets.

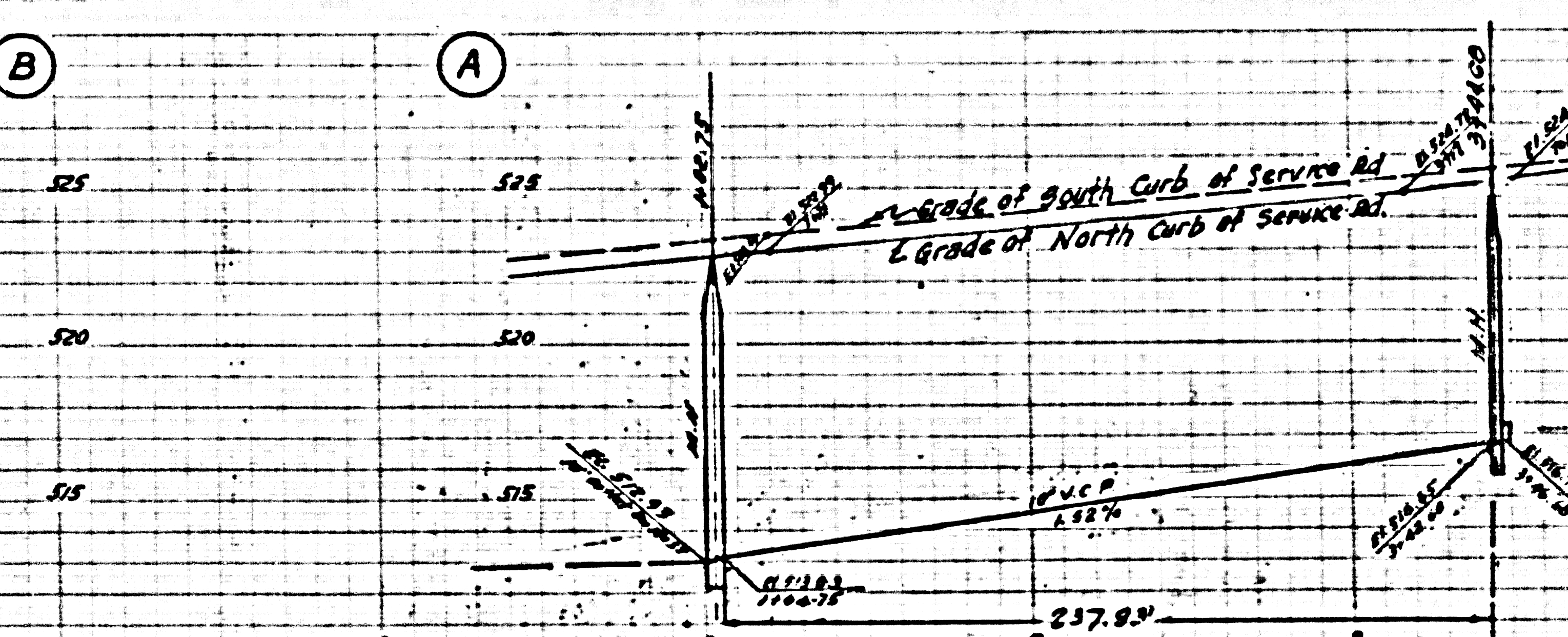
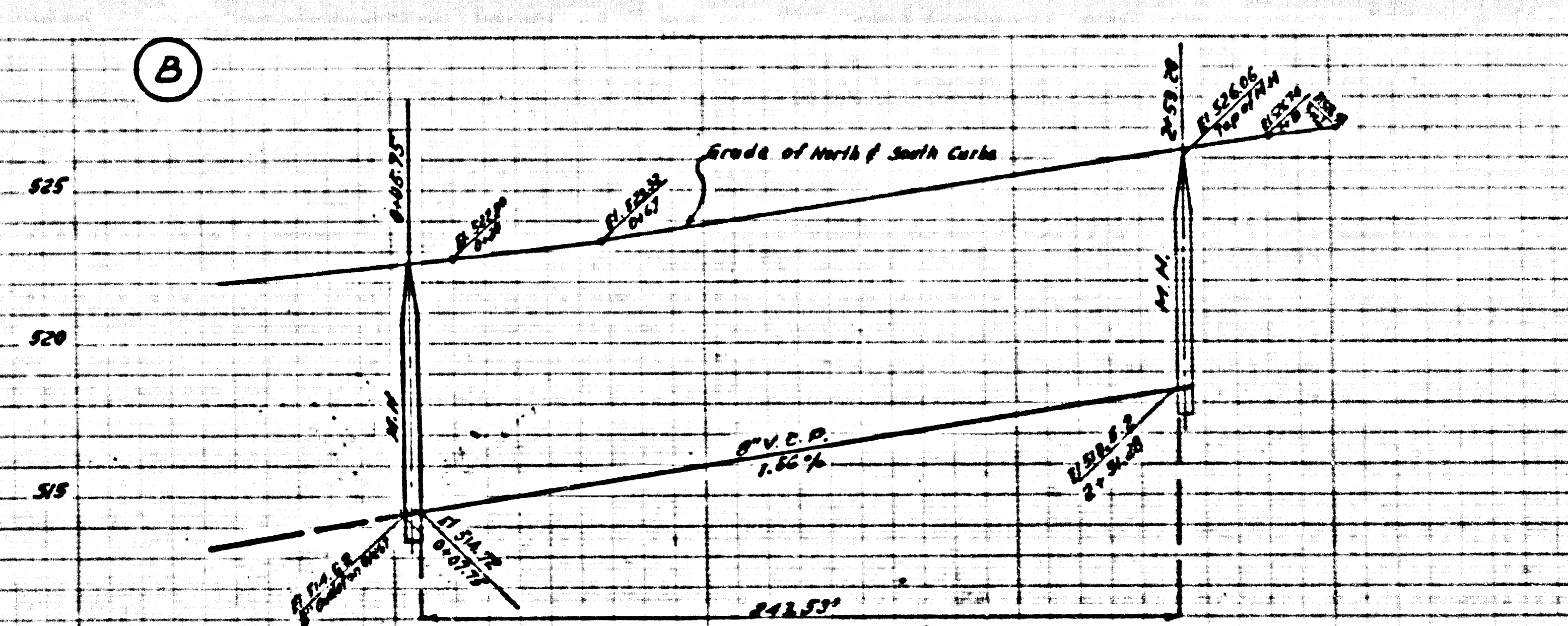
If work is to be done in a State Highway, a permit must be obtained from the State of California, Division of Highways, 120 South Spring Street.

COUNTY OF LOS ANGELES, CALIFORNIA

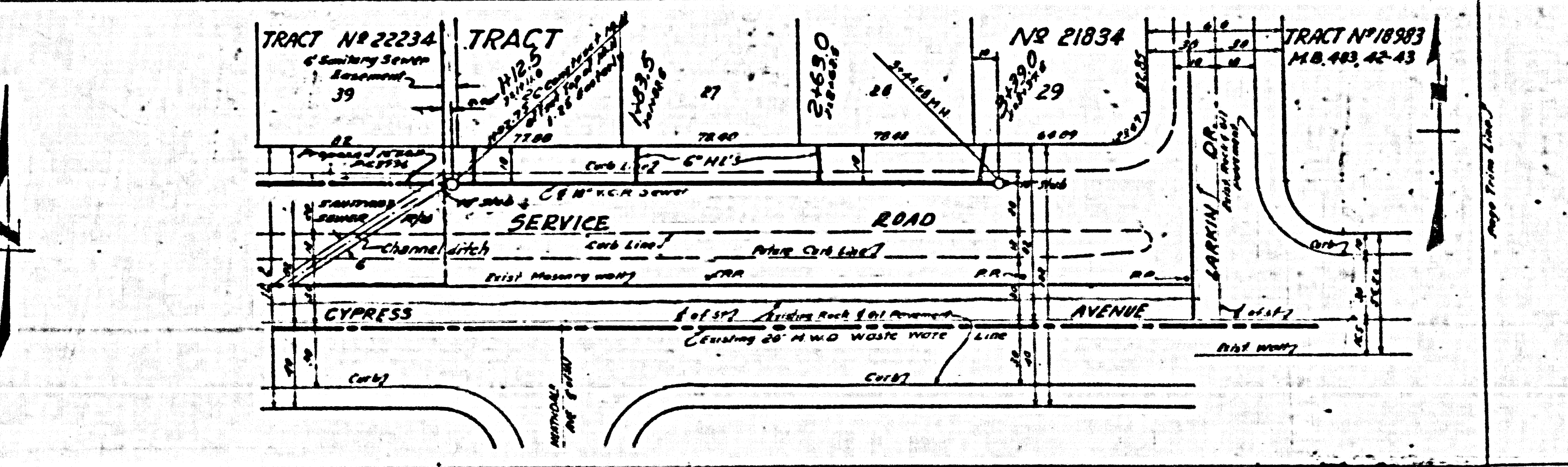
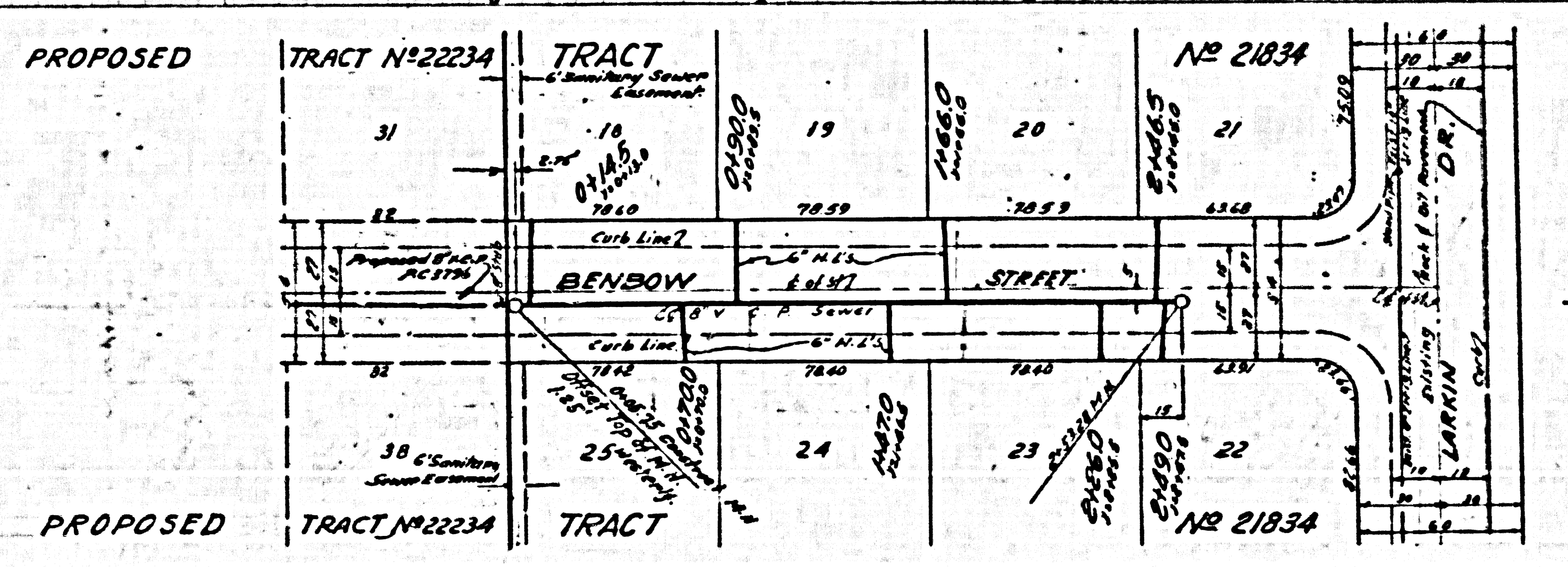
Approved, *John A. Laska* County Engineer
 Approved, *A. M. Brown*
 4-27-56

Checked by *S.V. Orinda 4-17-56*
 OFFICE OF COUNTY ENGINEER, 700 C.E. No. 7860

1. REVISIONS SHEETS 1-3
 2. DELETION OF SEWER SHEETS 4 & 5
 23,501
 (3)



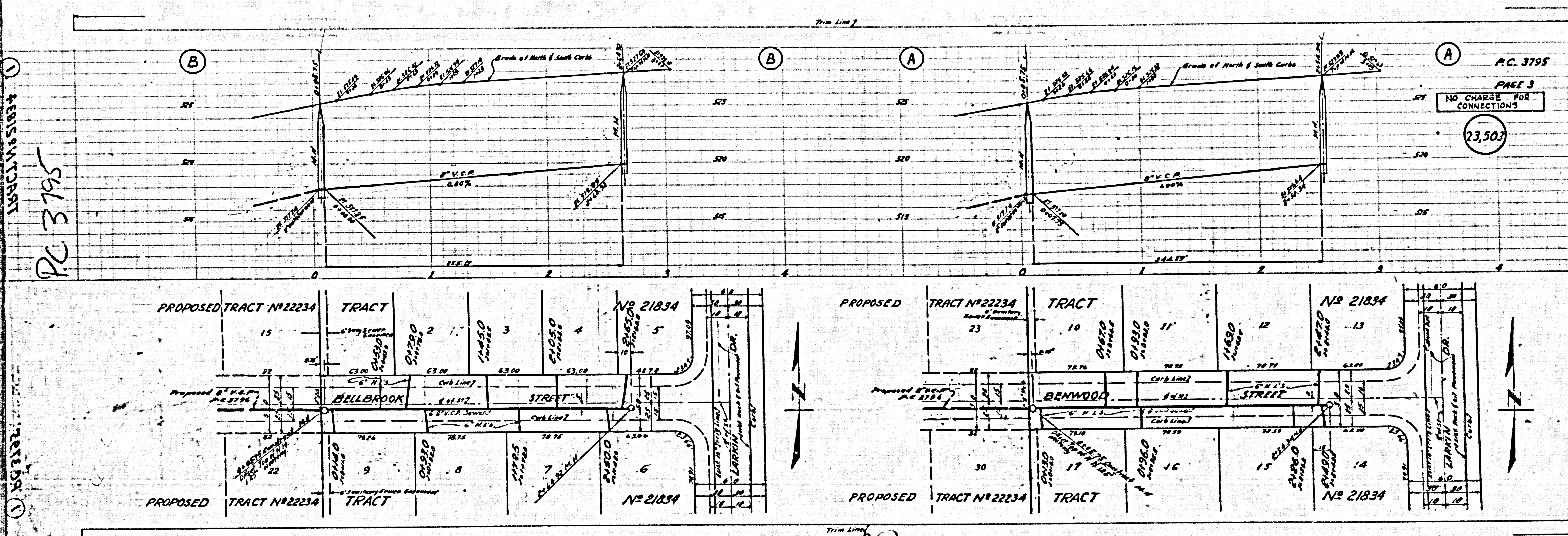
P.C. 3795
PAGE 2
NO CHARGE FOR CONNECTIONS
23,502



Trim Line

1 481504700

PC 3795

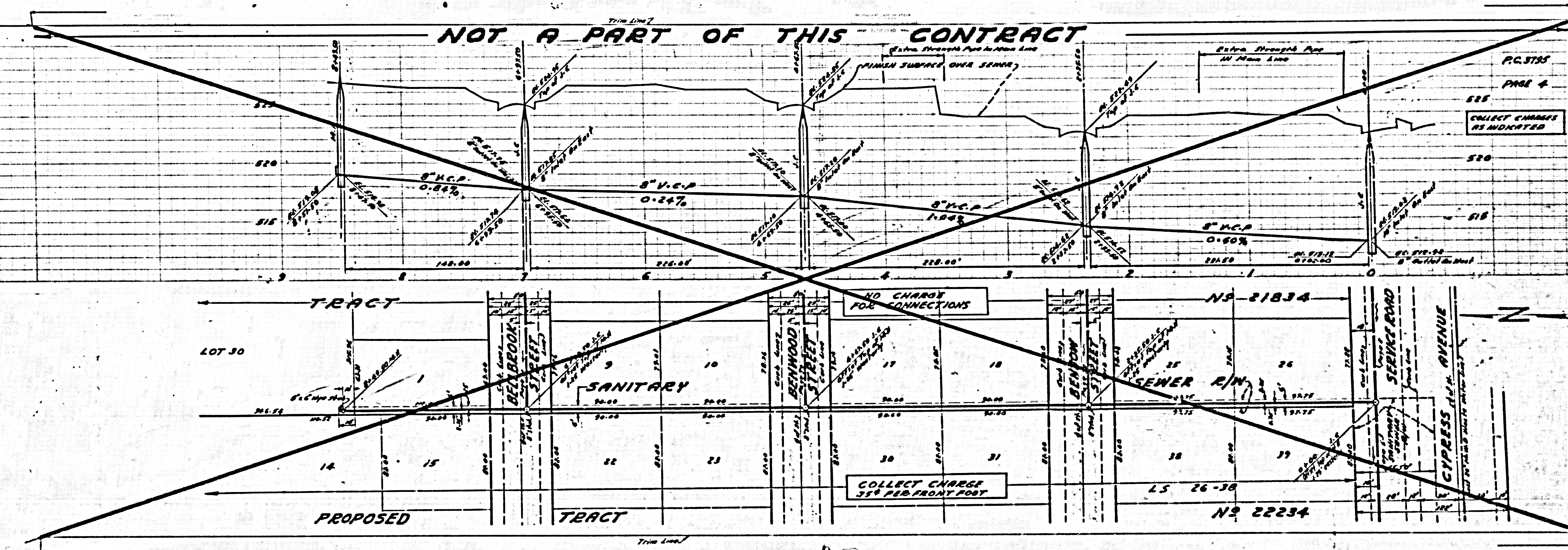


PC 3795
 PAGE 3
 NO CHARGE FOR CONNECTIONS
 23,503

1 481504700

1

NOT A PART OF THIS CONTRACT



PG. 5785
PAGE 4
COLLECT CHARGES AS INDICATED
NO. 21834
NO. 22234
CYPRESS AVENUE

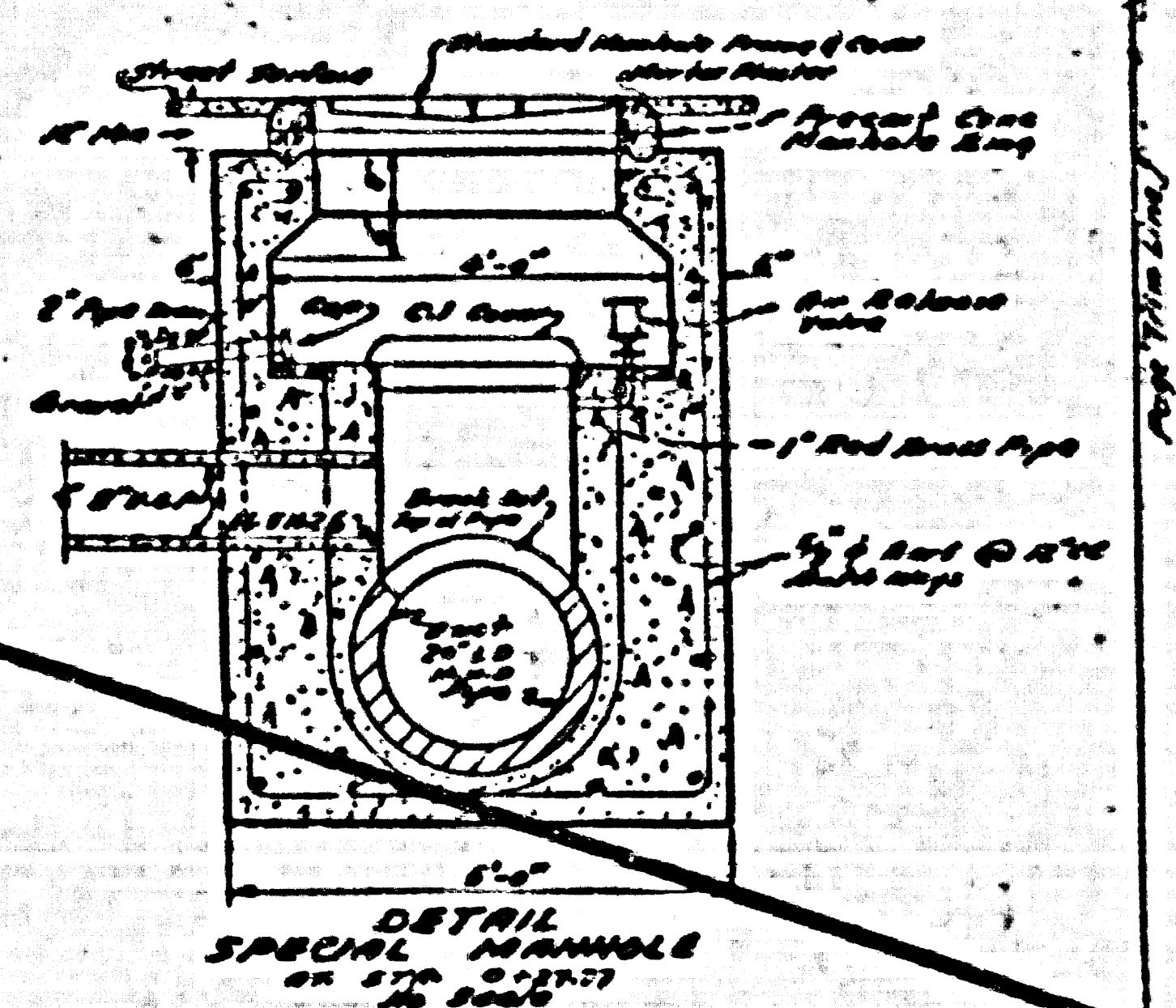
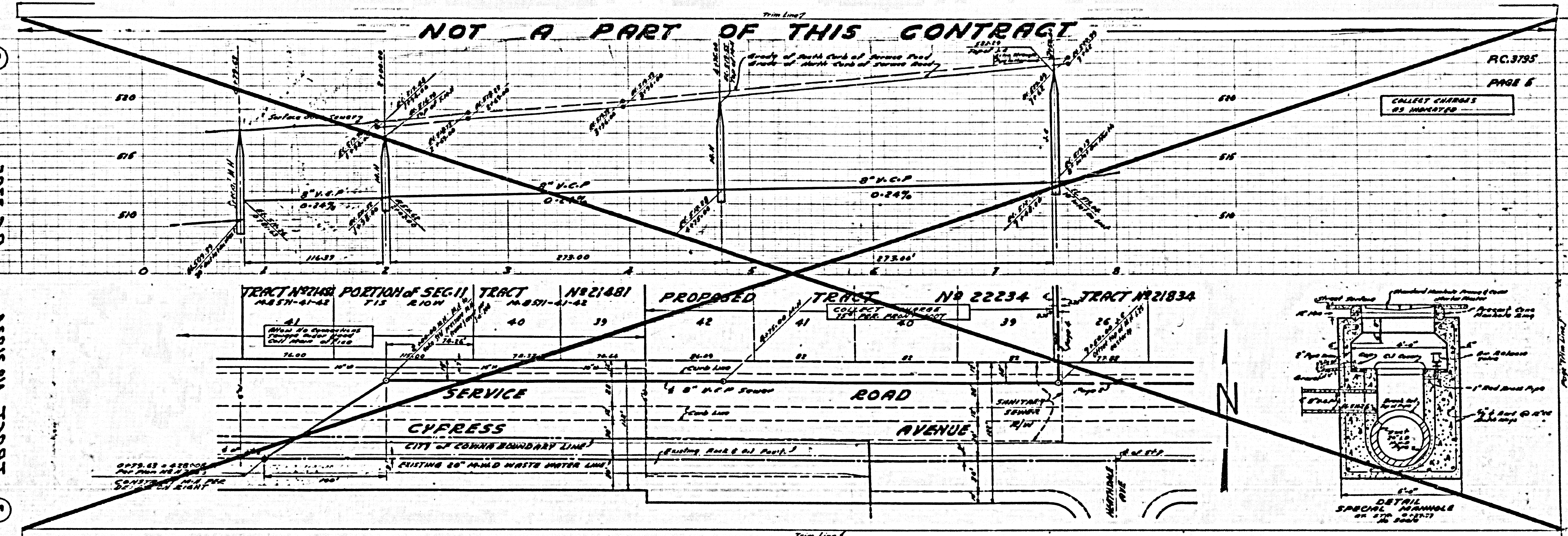
TRACT NO. 51824

22

NOT A PART OF THIS CONTRACT

RC.3735
PAGE 5

COLLECT CHARGES AS INDICATED



3795
P.C.
ABISSON TRACT

20