

Trim Line

SAN DIMAS Bldg. Dist. No. 10

PROFILE, ALIGNMENT AND GRADE OF
SANITARY SEWERS
TO BE CONSTRUCTED IN

P. C. 3796

PAGE 1

23,822

TRACT No 22234

PRIVATE CONTRACT NO. 3796

W. S. 47

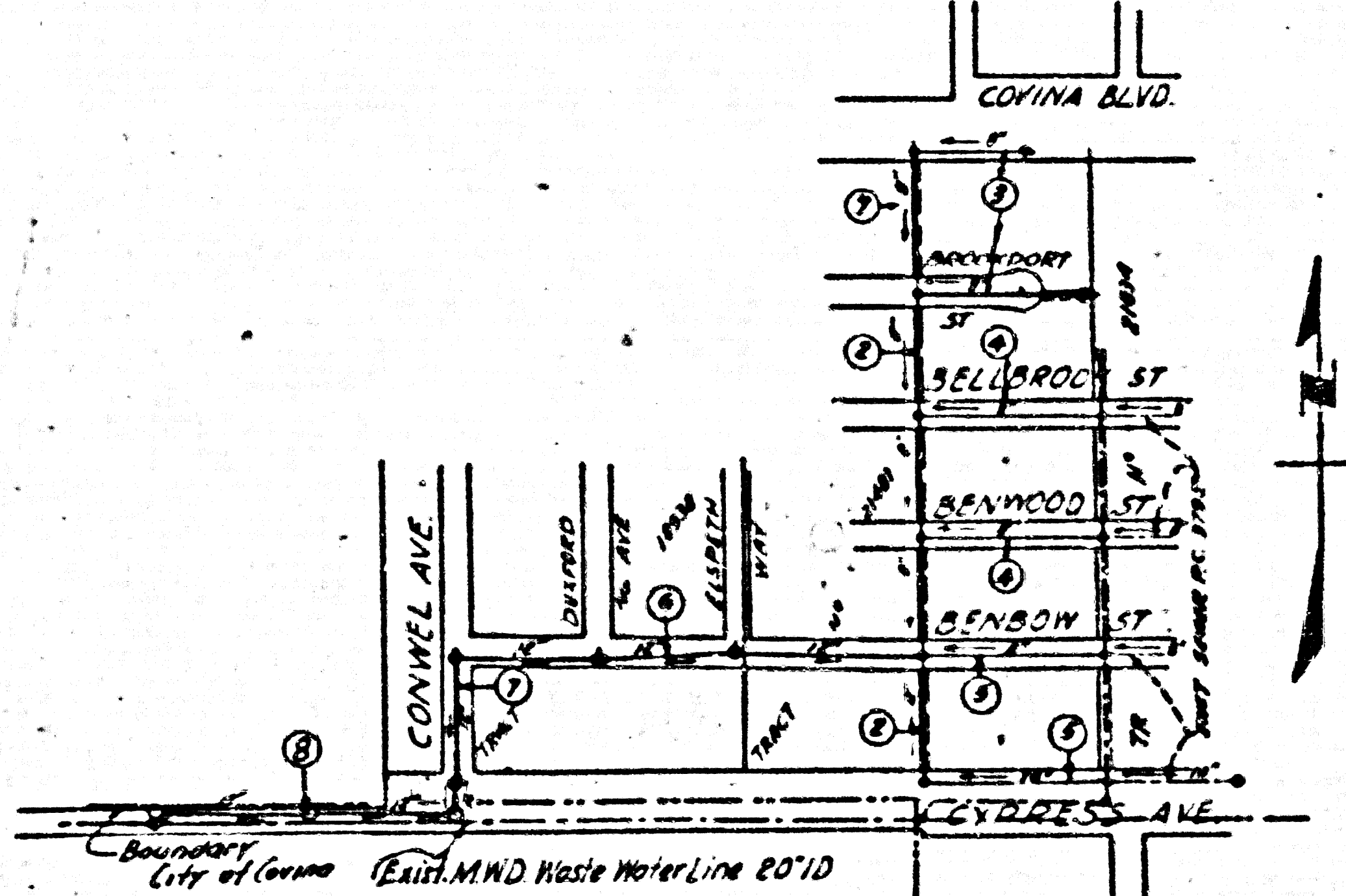
TWO SHEETS

NOVEMBER 1955

Scale: VERT. 1"=4'
HORIZ. 1"=40'
PREPARED IN THE OFFICE OF
KARL TUTTLE ENGINEERING CO.
by John A. Alfred, No. 12, 1955
C. E. No. 5638
FOR LEGEND SEE PLAN NO. S-664

① TRACT No 22234 P.C. 3796

BENCH MARK
SG 67
LAT 15' 2" W of Curb Return @ SW Cor. of
Elsbeth Way & Cypress Ave. Elev. 5'4 5/8"



INDEX MAP
TRACT No 22234
P.C. 3796
SCALE 1" = 300'

NOTE

- Provide stakes on the property lines or property lines produced at right angles to the sewer line at the center line of each manhole.
- No representative of the County Engineer will survey or layout any portion of the work.
- The owner or his authorized representative shall furnish the County Engineer with grade sheets and stations for all house laterals and Y branches and shall provide stakes for them at their proper locations with stationing plainly marked. Any change in location shall be requested in writing by the owner or his representative.
- No revisions shall be made in these plans without the approval of the County Engineer.
- Use standard manhole frames and covers, S-6-117.
- Use standard strength pipe except as noted.
- Use cement mortar for all vitrified clay pipe joints.
- Resurface all trench within paved area to meet L.A. County Road Dept. or Calif. State Highway Dept. requirements in accordance with permit.
- Encase four feet of sewer at points of interference with poles, S-6-119.
- House laterals to be constructed with inverts at property line 6 feet below curb grade except as noted.
- All structures shall be brick sewer structures, S-6-104.
- For allowable leakage test, use Formula No. 1, Spec's., Sec. 51.
- Manhole tops in unimproved Rights-of-Way to be 6" above finish grade.
- Provide Encasement To Buried House Lateral Depth At Property Line Below Top of Curb Street Elevation or Elevation of 6" of Street For Each House Lateral On The Grade Sheet

SHEET	PAGES
1	1-6
2	5-8

COLLECT CHARGES AS INDICATED
L. A. 5-1-56

Approved by: J. V. Onda, No. 55
Official of County Engineer, Dep. C. E. No. 5638

APPROVED CITY OF COVINA
CITY ENGINEER - MAY 24/1956

checked 12-28-56 W. L. Lamm

Trim Line

NOTE

Grades to which this improvement is to be constructed are shown on plans and profiles. Grade points for top of curbs, center line of streets, or center line of alleys are shown by circles on profiles. At all points between designated points the grade shall be established so as to conform to a straight line drawn between said designated points.

Elevations are in feet above U.S.C. and G.S. Sea Level Datum of 1929.

This drawing and the data hereon are hereby made a part of the specifications.

Work shall be constructed according to specifications on file in the office of the County Engineer and shall be prosecuted only in the presence of the County Engineer.

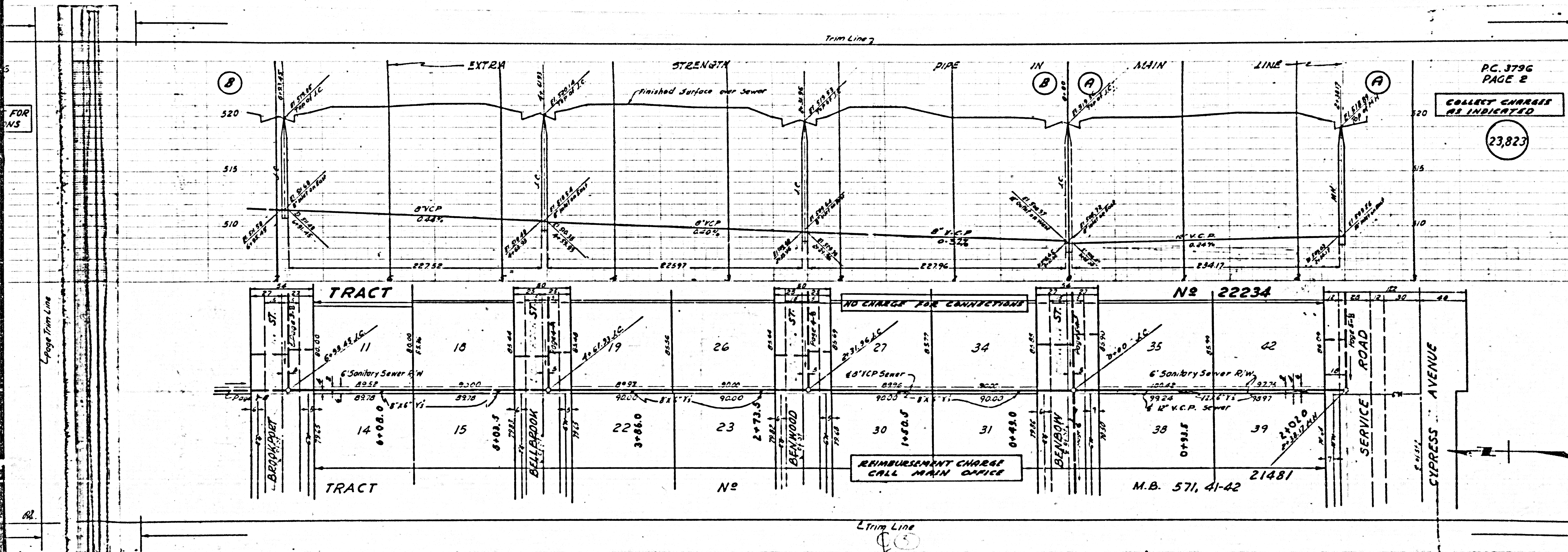
Before work can be started, the contractor must obtain a permit to excavate in County streets from the L.A. County Road Dept., 108 W. 2nd St., and make a deposit with the County Engineer, Room 344, 253 S Broadway, sufficient to cover the cost of construction inspection and record plans.

Approval of this plan by the County of Los Angeles does not constitute a representation as to the accuracy of the location of or the existence or non-existence of any underground utility, pipe, or structure within the limits of this project. This note applies to all sheets.

If work is to be done in a State Highway, a permit must be obtained from the State of California, Division of Highways, 120 South Spring Street.

COUNTY OF LOS ANGELES, CALIFORNIA

Approved, John A. Lamm, County Engineer
Approved, A. M. BROWN
C.E. No. 5638
Checked by: J. V. Onda, No. 55
Official of County Engineer, Dep. C. E. No. 5638



PC. 3796
PAGE 2

COLLECT CHARGES
AS INDICATED

23,823

NO CHARGE FOR CONNECTIONS

REIMBURSEMENT CHARGE
CALL MAIN OFFICE

N# 22234

M.B. 571, 41-42

FOR
MS

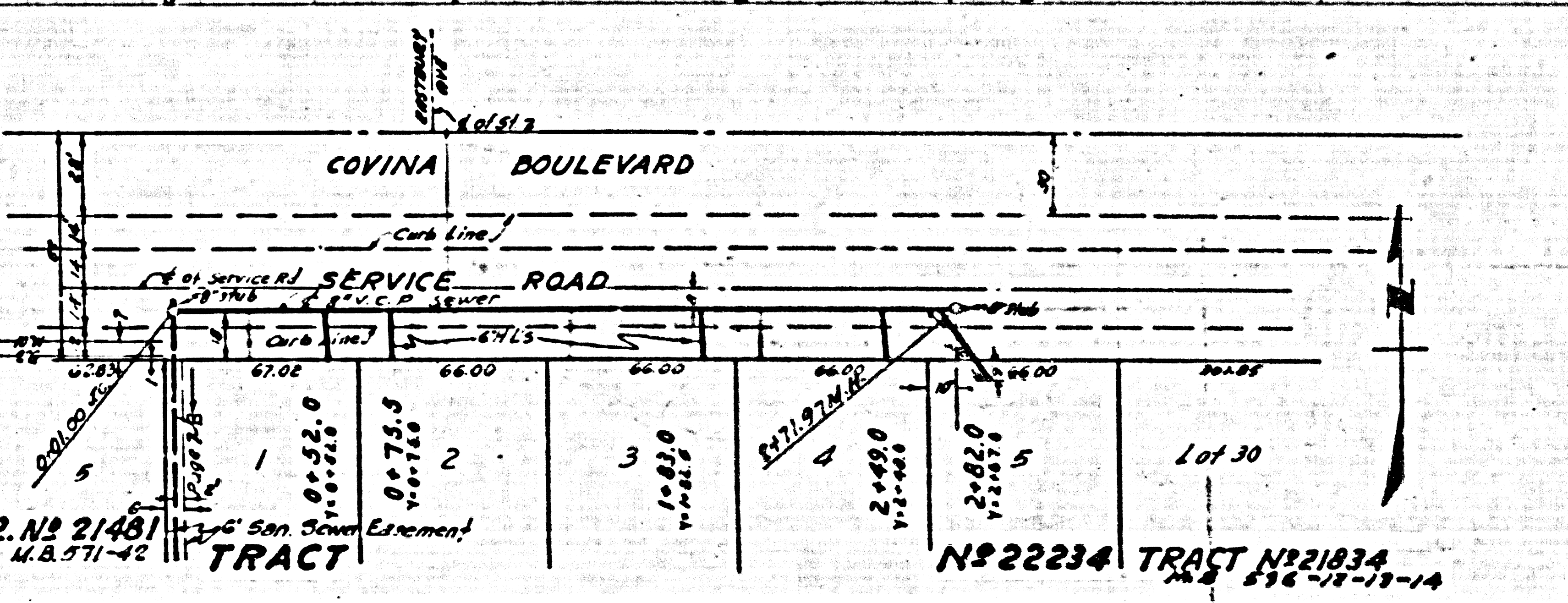
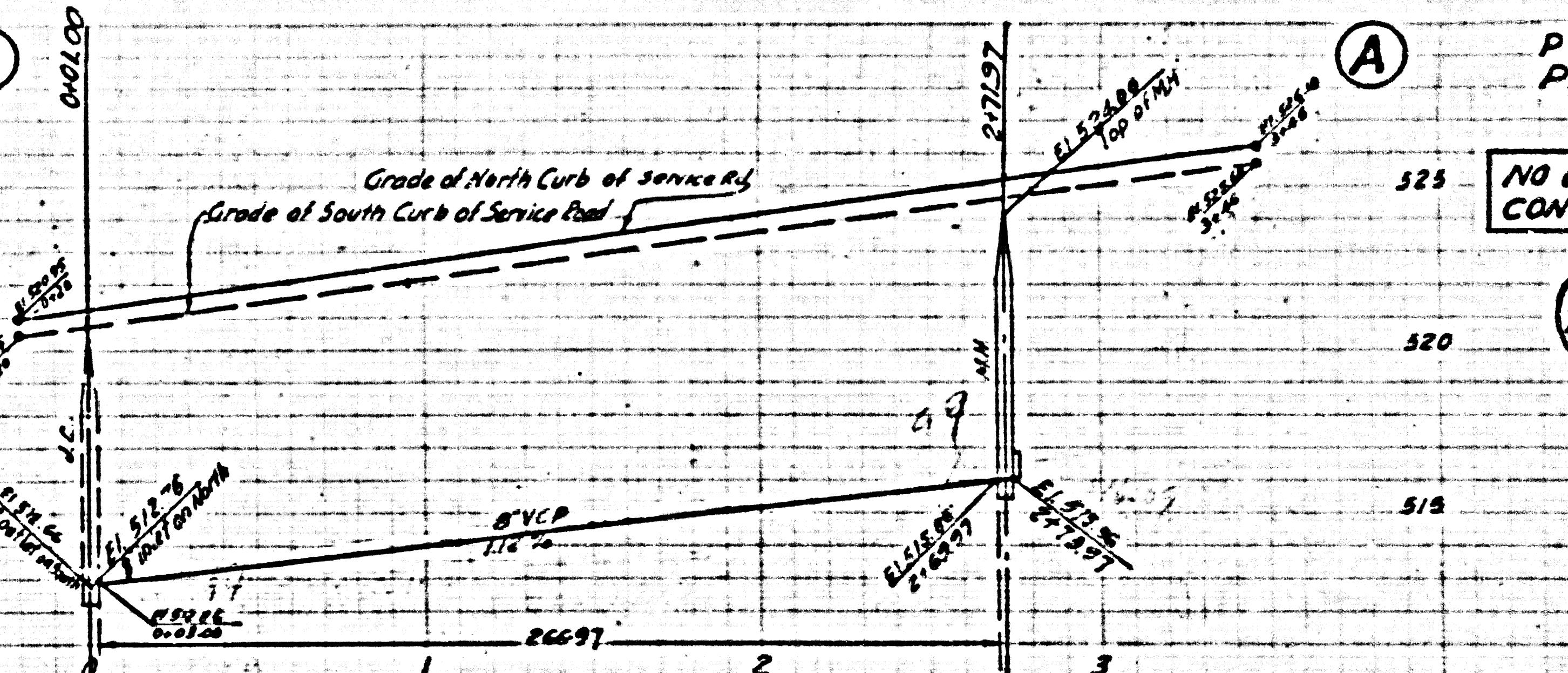
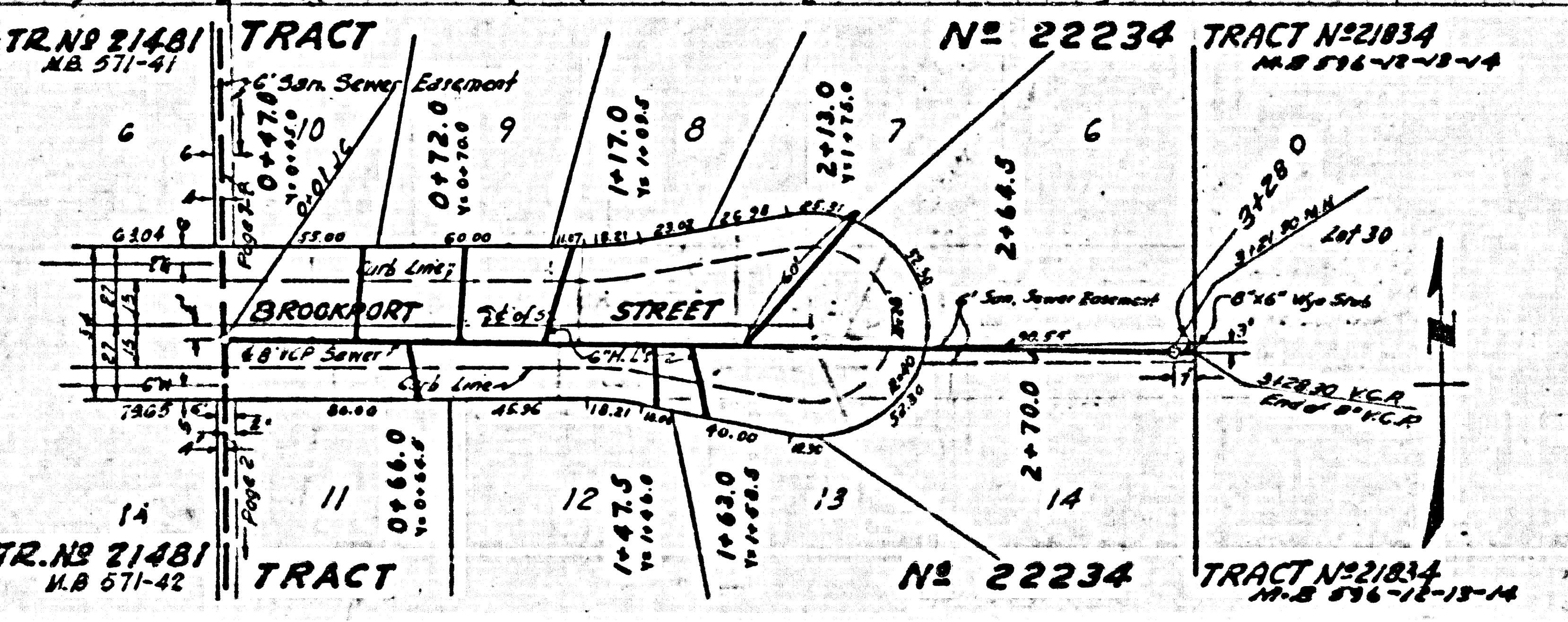
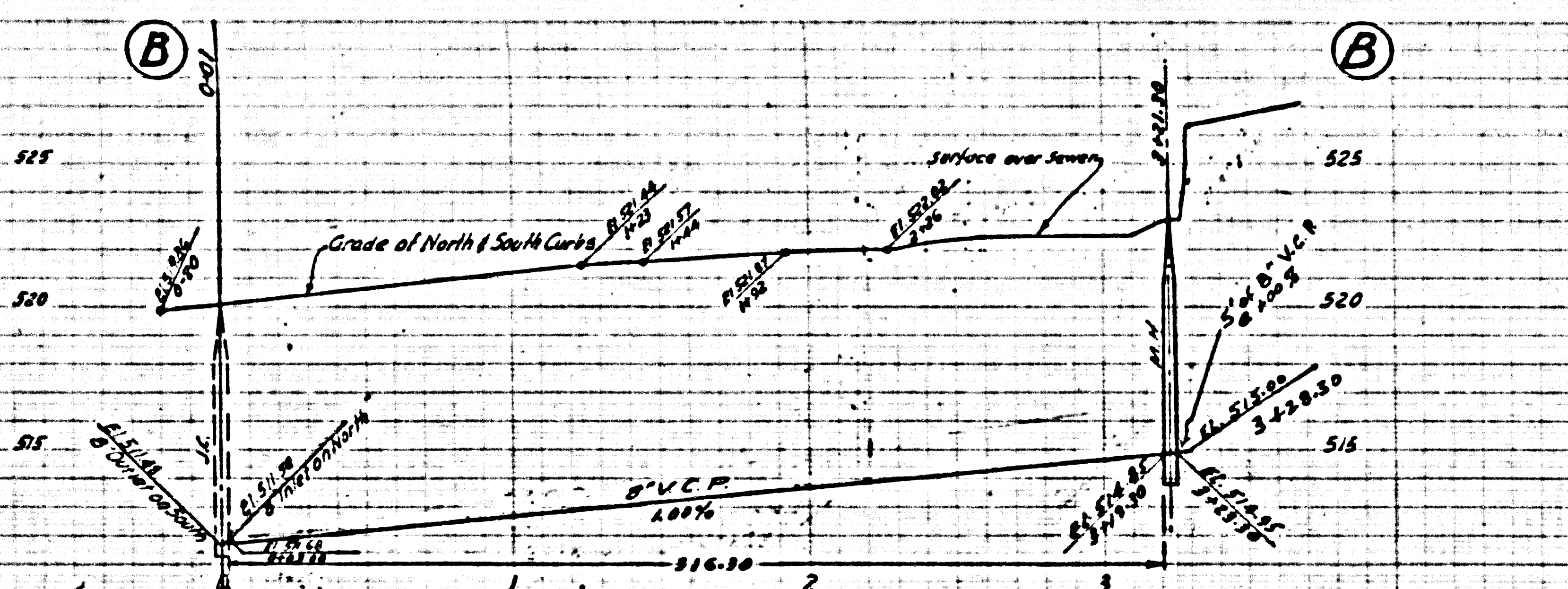
Large Trim Line

Page Trim Line

Trim Line

NO CHARGE FOR
CONNECTIONS

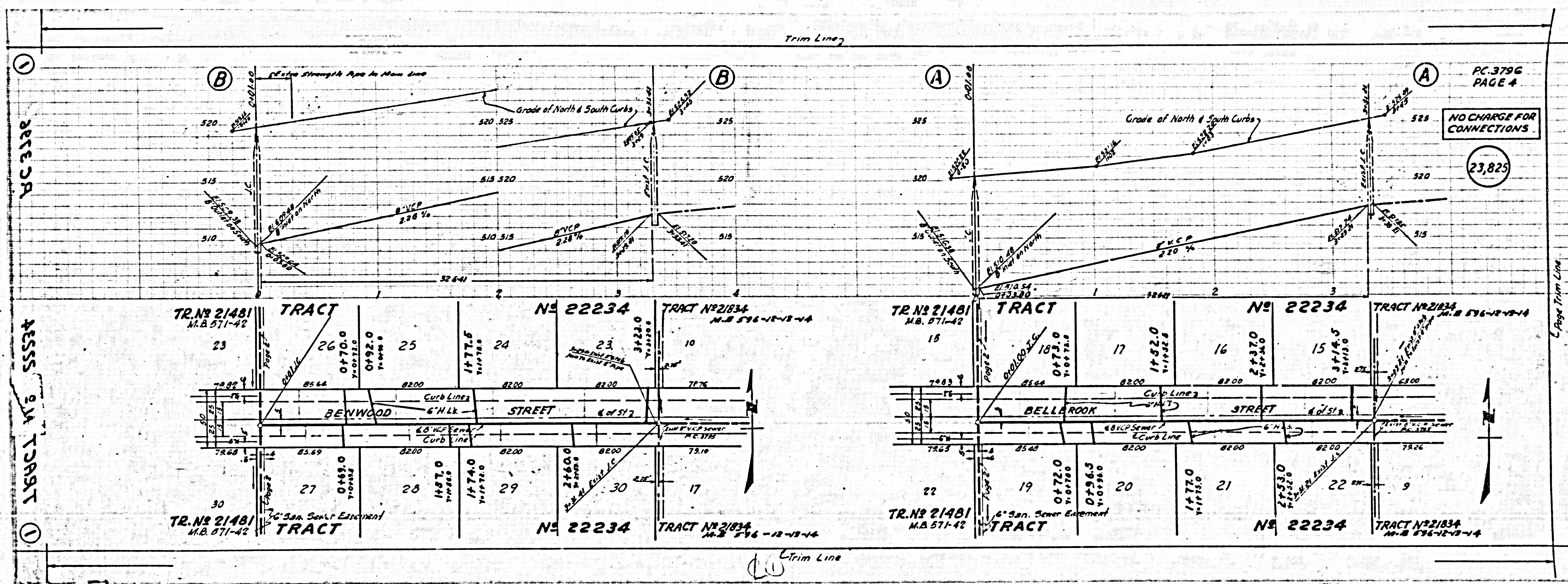
23,825



NO CHARGE FOR
CONNECTIONS

23,824

Trim Line



3835 2A

3835 2A TRACT

PC 3796
PAGE 4

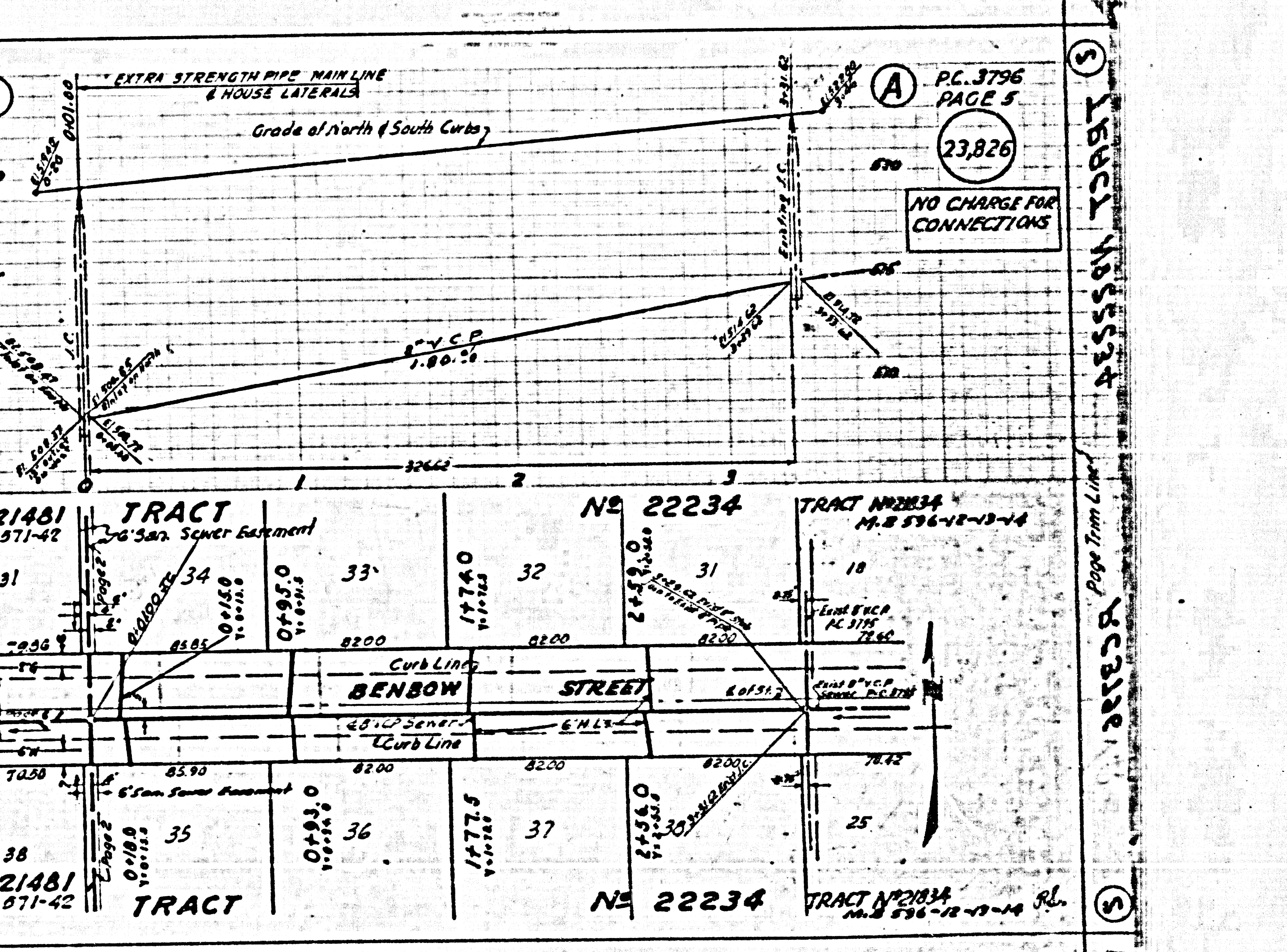
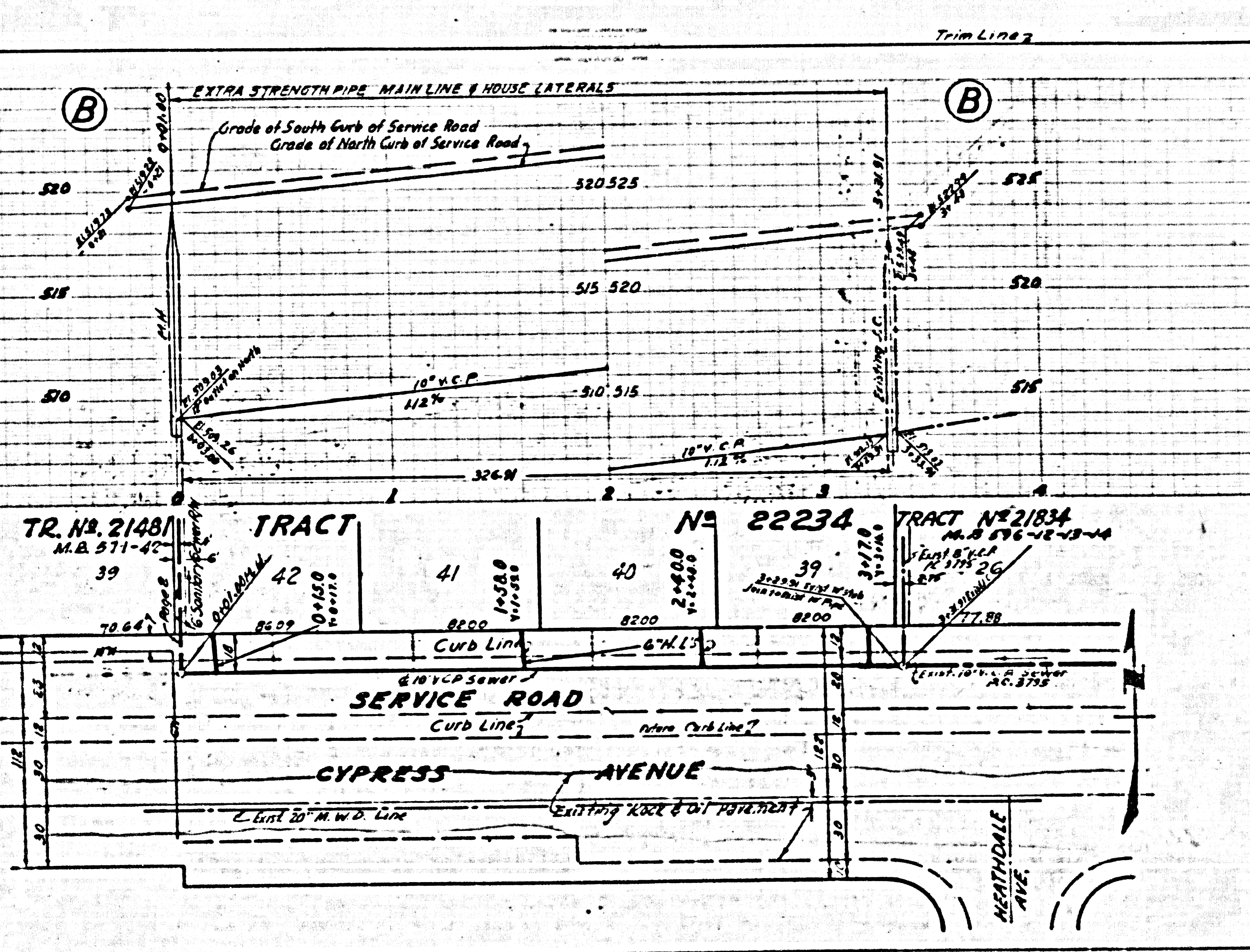
NO CHARGE FOR
CONNECTIONS

23,825

Page Trim Line

Trim Line

P.C. 3796
PAGE 6
23,827
COLLECT CHARGES
AS INDICATED

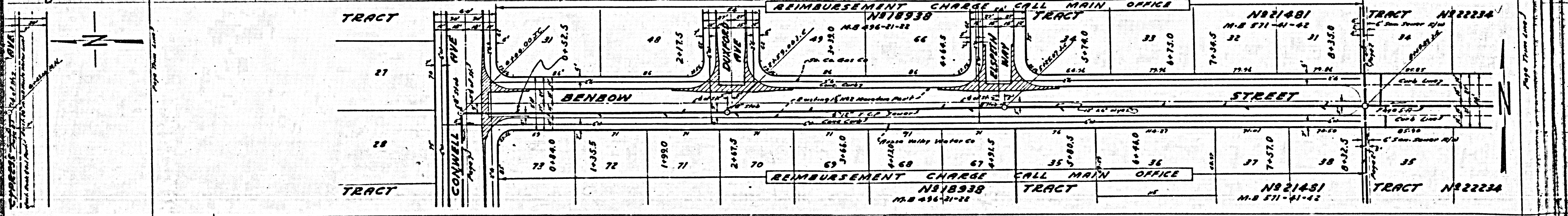
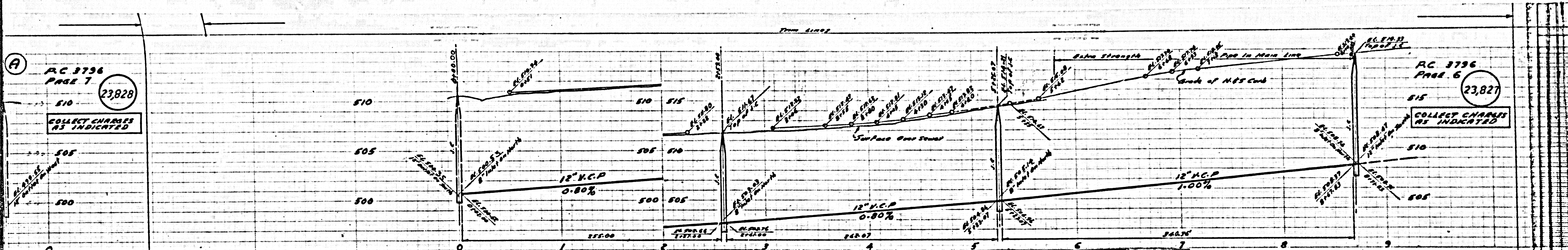


P.C. 3796
PAGE 5
23,826
NO CHARGE FOR
CONNECTIONS

3
18621
1865533
186318
5

(A) RC 3796
PAGE 7
23,828
COLLECT CHARGES
AS INDICATED

RC 3796
PAGE 6
23,827
COLLECT CHARGES
AS INDICATED



REIMBURSEMENT CHARGE CALL MAIN OFFICE
NR18938
M.B. 496-21-22

REIMBURSEMENT CHARGE CALL MAIN OFFICE
NR21481
M.B. 571-41-42

REIMBURSEMENT CHARGE CALL MAIN OFFICE
NR18938
M.B. 496-21-22

REIMBURSEMENT CHARGE CALL MAIN OFFICE
NR21481
M.B. 571-41-42

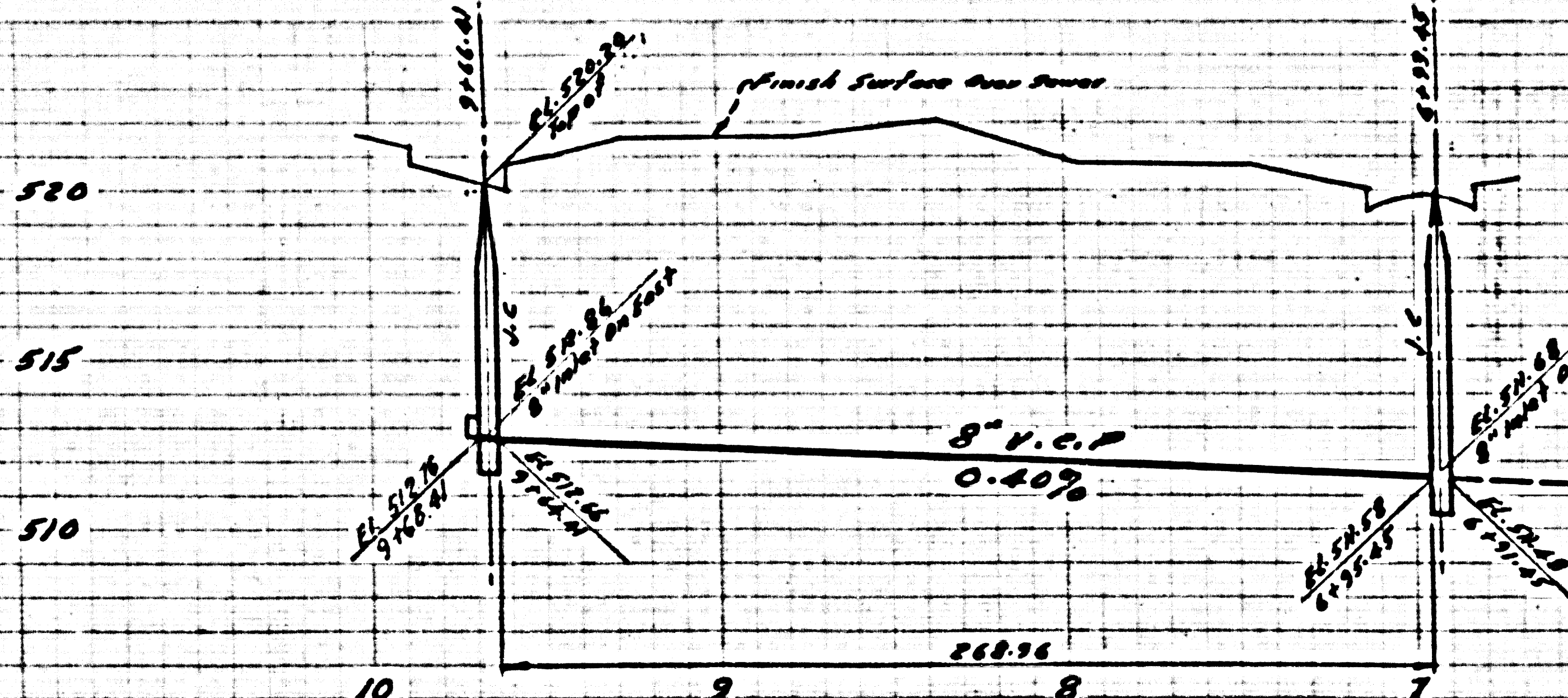
(10)

RC 3796
PAGE 8

ISSUE NO PERMITS
CALL MAIN OFFICE

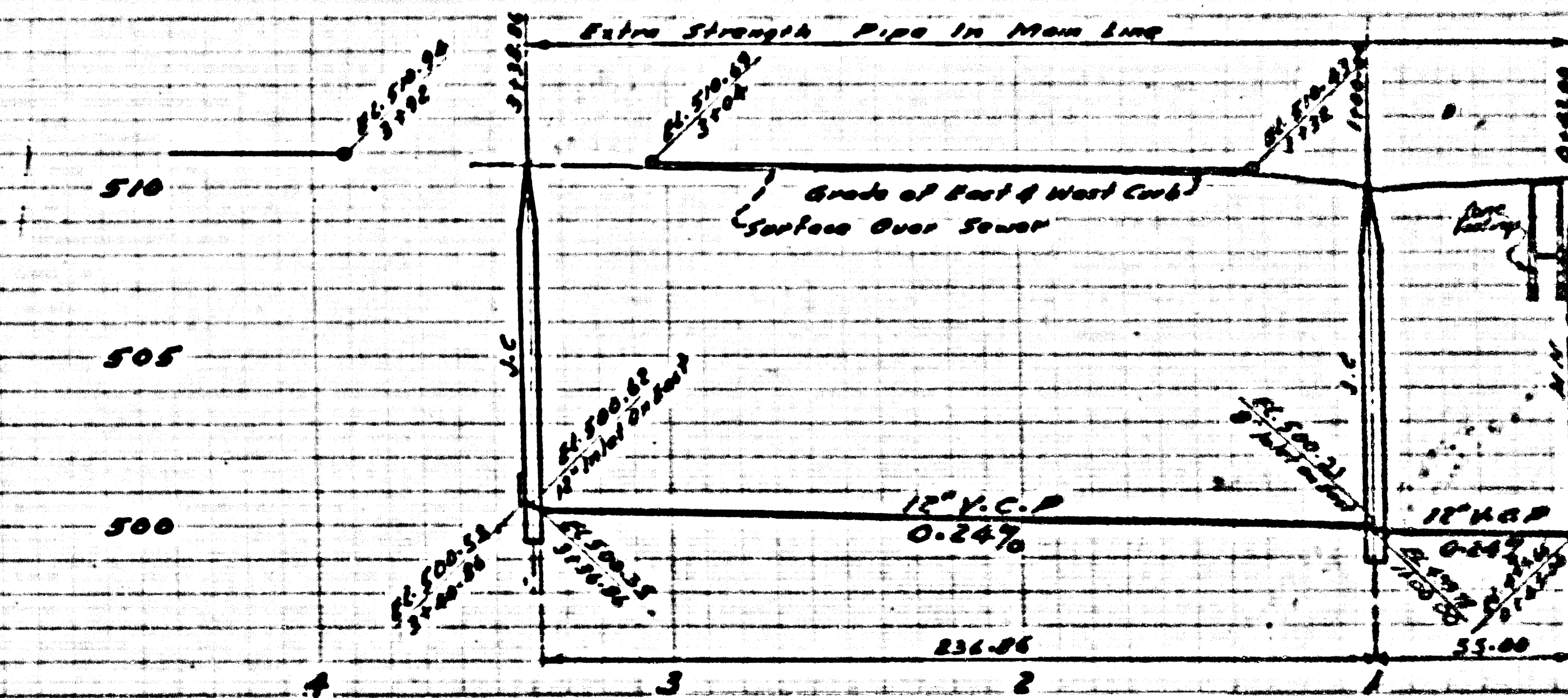
23,829

(B)



(B)

(A)

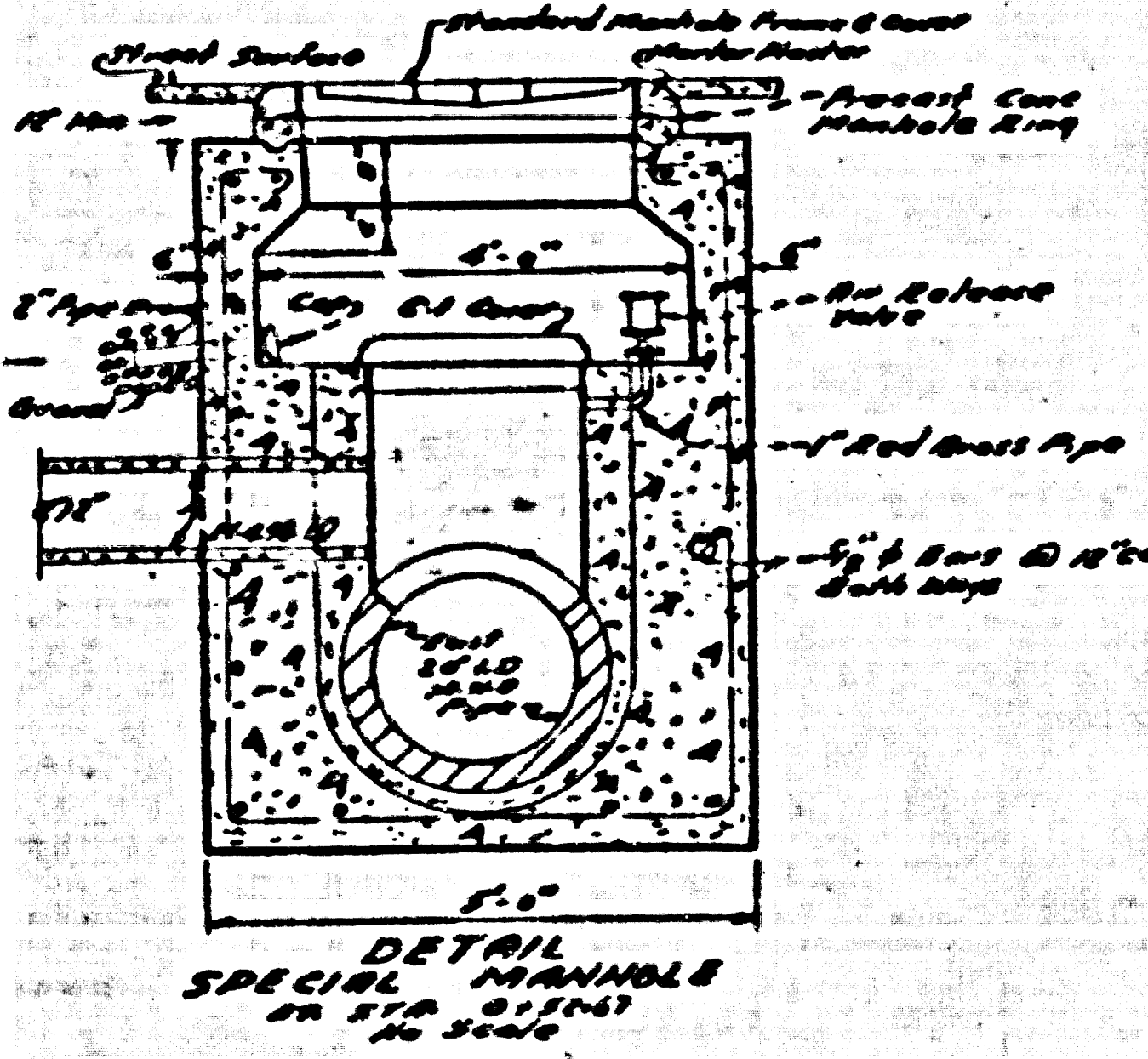


(A)

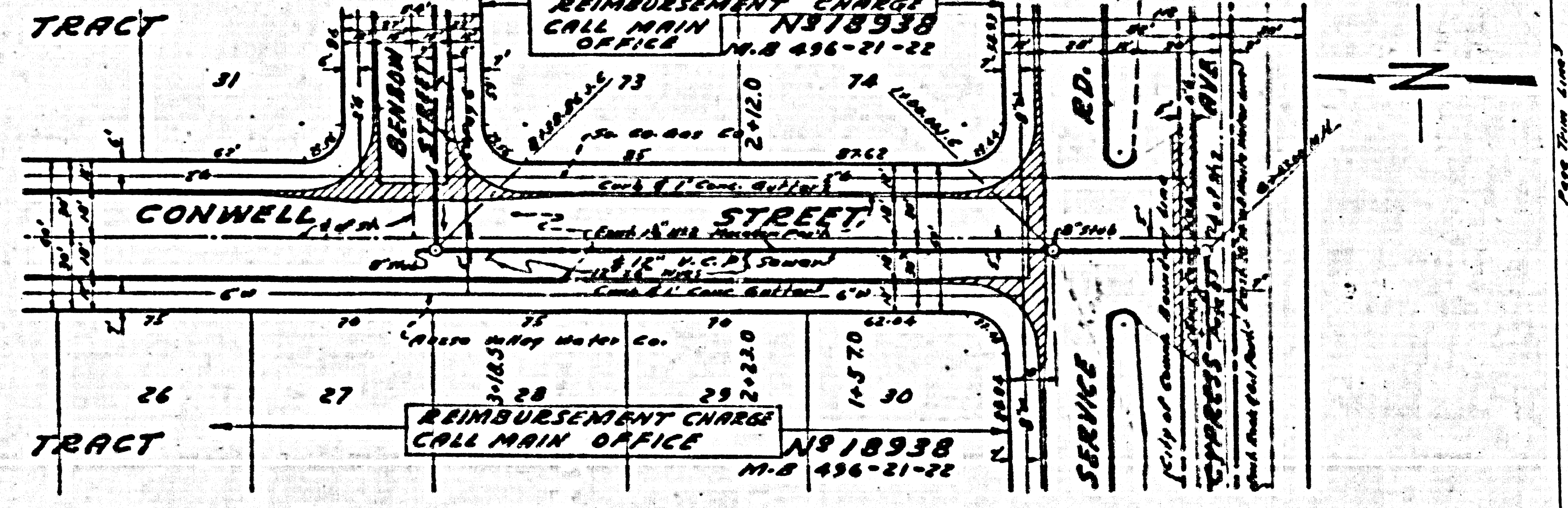
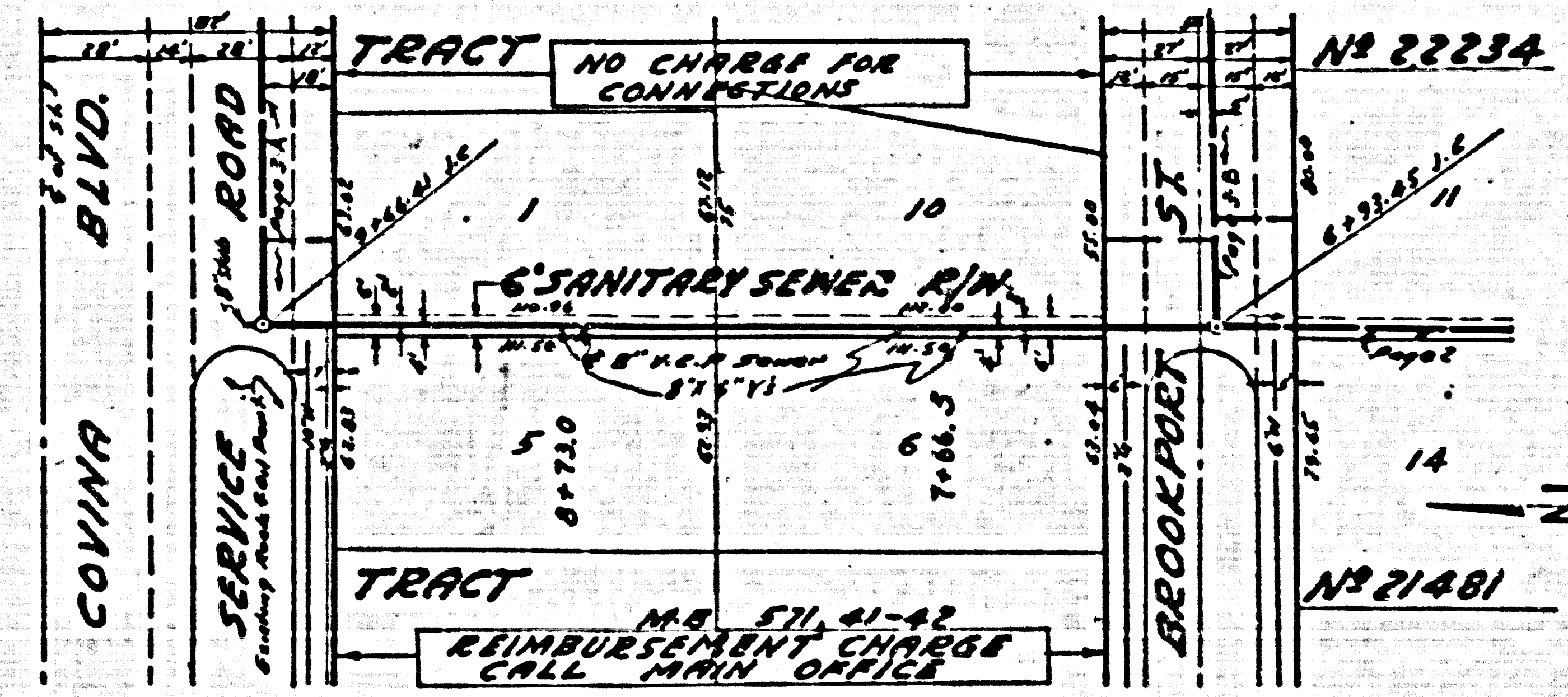
RC 3796
PAGE 7

23,928

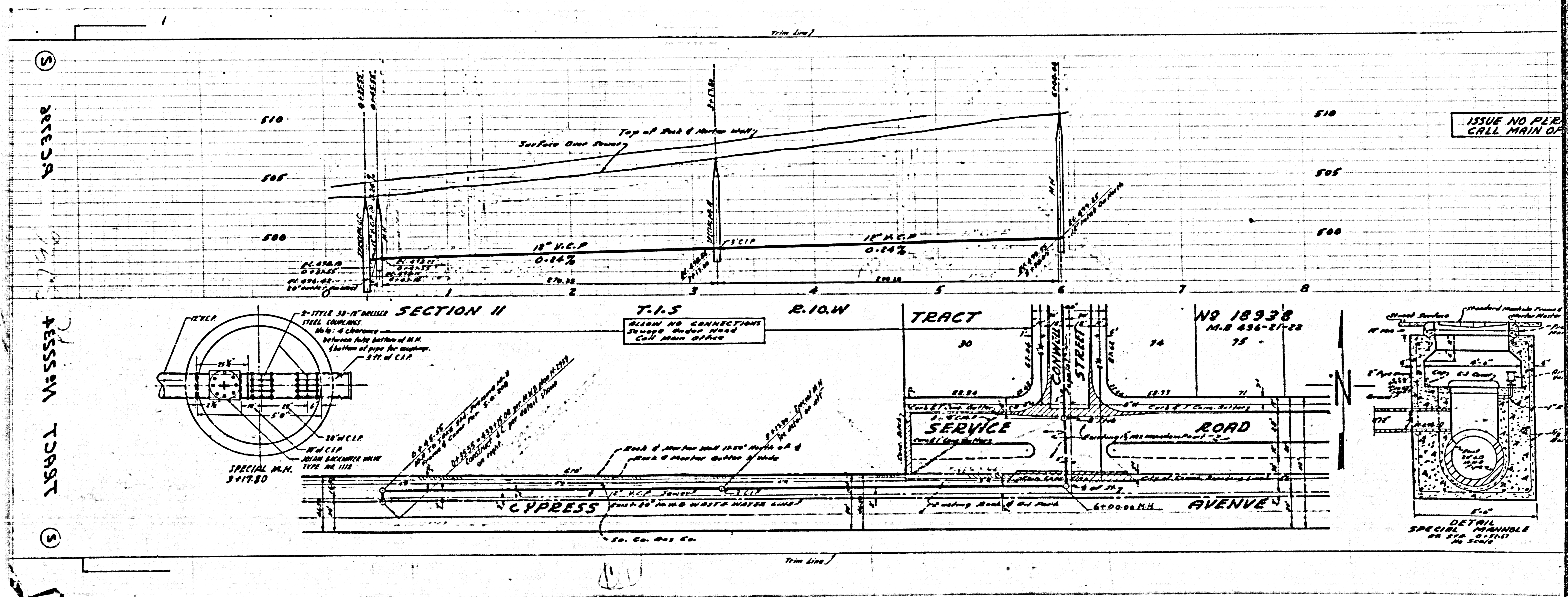
COLLECT CHARGES
AS INDICATED



DETAIL
SPECIAL MANHOLE
AS SHOWN
ON SHEET



Trim Line

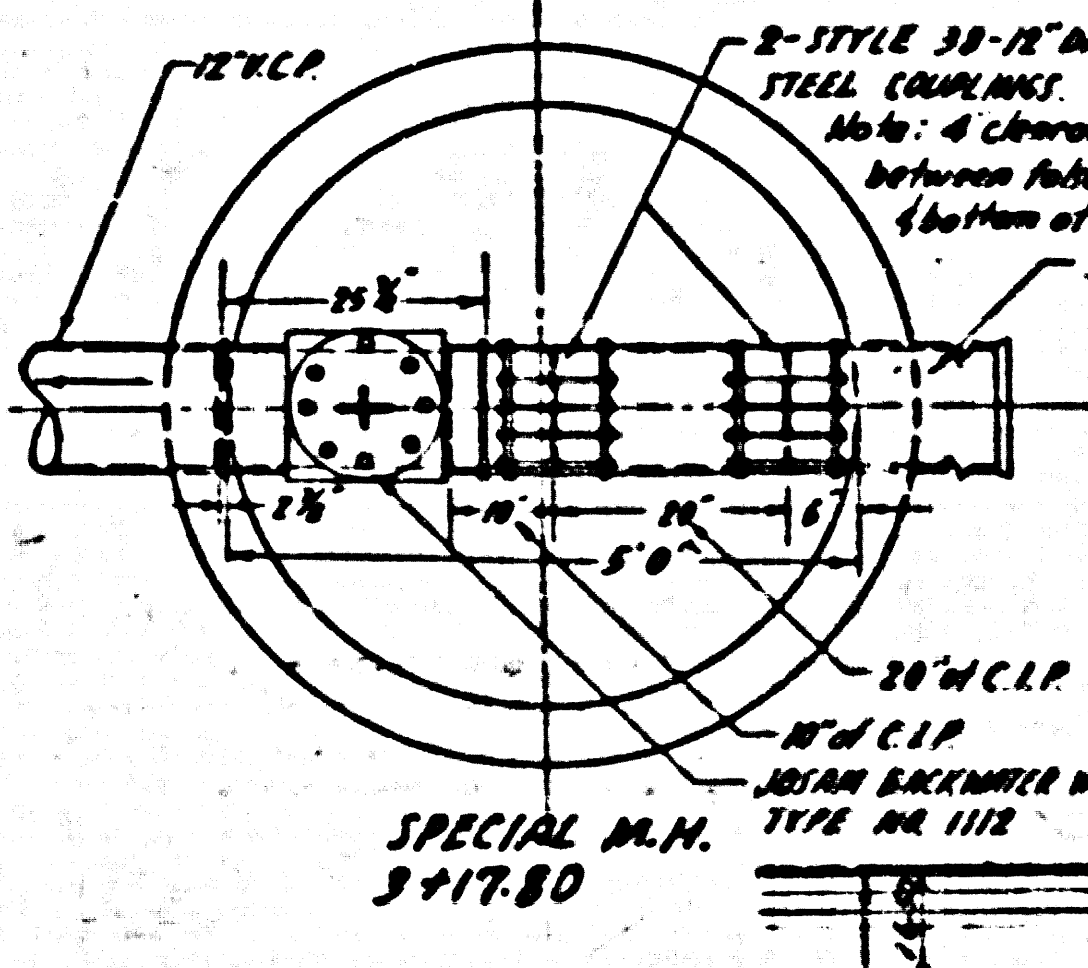


5

ARCA

ARCA TRACT

5



SECTION II

T.I.S.

R.I.O.W.

TRACT

NR 18938

M.B. 496-21-22

75

SERVICE

ROAD

CYPRESS

AVENUE

ISSUE NO PER CALL MAIN OF

DETAIL MANHOLE

SPECIAL MANHOLE

ON 5/4 SCALE