

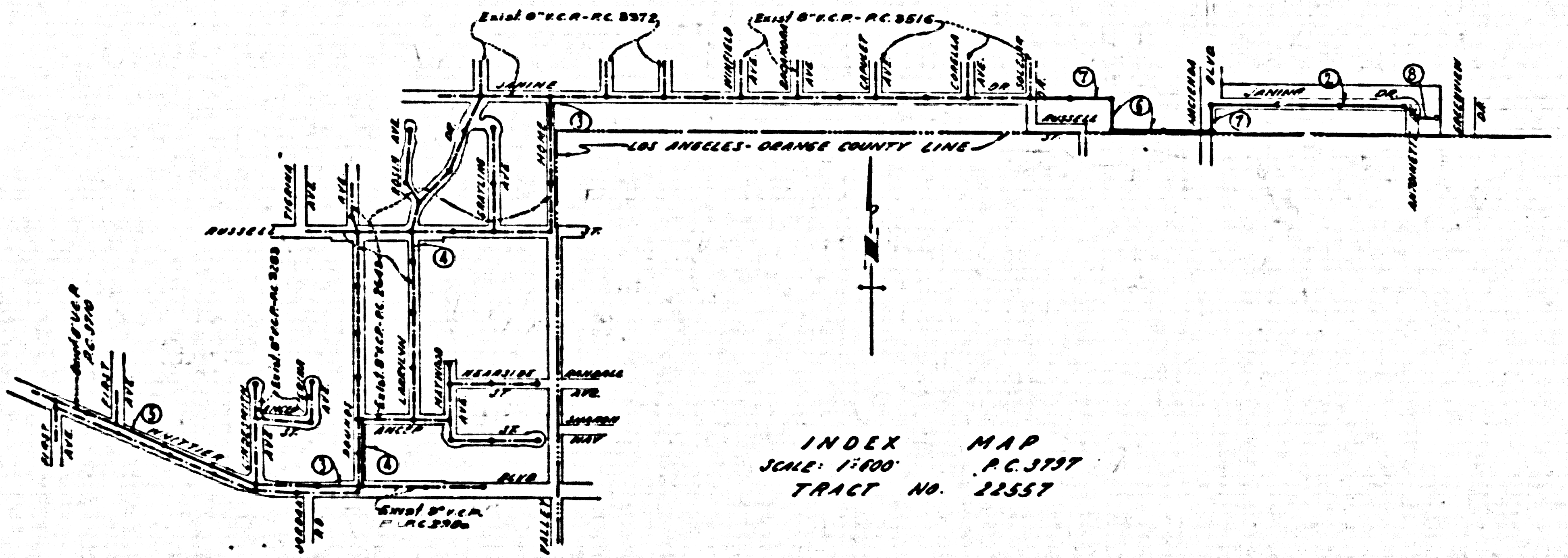
WHITTIER BLDG. DIST. NO. II

PROFILE ALIGNMENT AND GRADE OF P.C. 3797
 SANITARY SEWERS PAGE 1
 TO BE CONSTRUCTED IN

TRACT NO. 22557
 PRIVATE CONTRACT NO. 3797

W.S. 34
 4 SHEETS, 8 PAGES
 SCALE: 1" = 10' JANUARY, 1956
 PREPARED IN THE OFFICES OF
 KEMMERER ENGINEERING CO. INC.
 BY: *John C. Kemmerer*
 REG. C. E. NO. 8222
 FOR LEGEND SEE PLAN NO. S-A-64

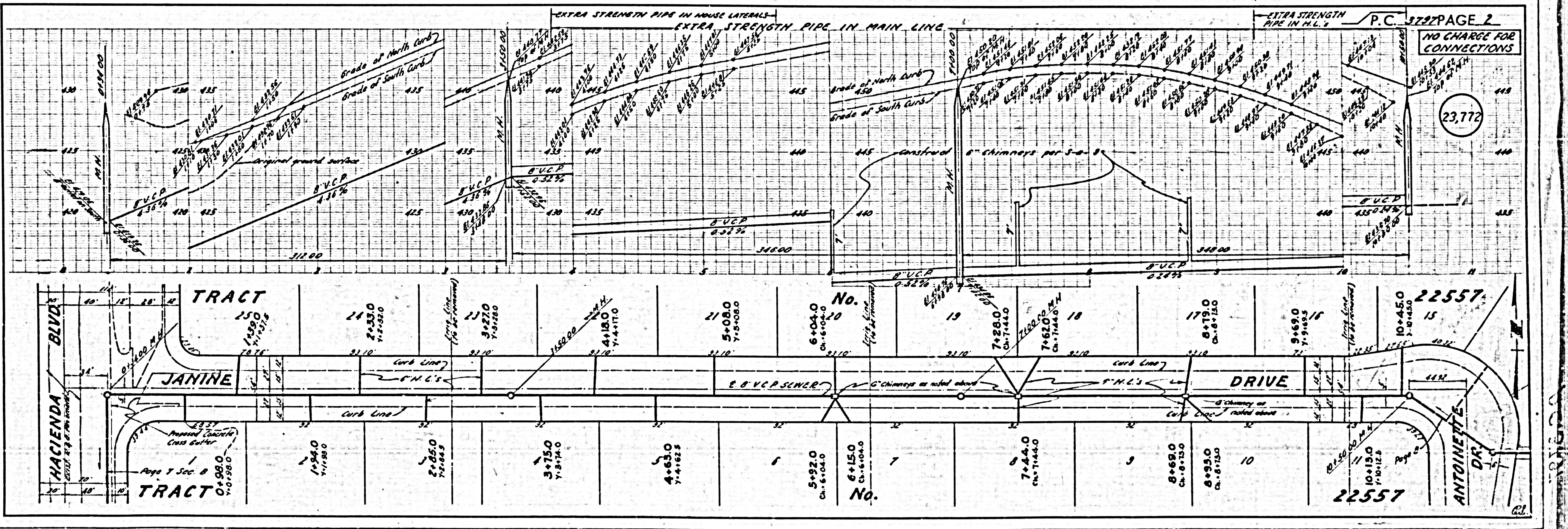
- NOTES
- PROVIDE STAKES ON THE PROPERTY LINE OR PROPERTY LINES PRODUCED AT RIGHT ANGLES TO THE SEWER LINE AT THE CENTER LINE OF EACH MANHOLE.
 - NO REPRESENTATIVE OF THE COUNTY ENGINEER WILL SURVEY OR LAYOUT ANY PORTION OF THE WORK.
 - THE OWNER OR HIS APPROVED REPRESENTATIVE SHALL FURNISH THE COUNTY ENGINEER WITH LEAD SHEETS AND STATION FOR ALL HOUSE LATERALS AND T BRANCHES AND SHALL PROVIDE STAKES FOR THEM AT THEIR PROPER LOCATIONS WITH STATIONING PLAINLY MARKED. ANY CHANGE IN LOCATION SHALL BE REQUESTED IN WRITING BY THE OWNER OR HIS REPRESENTATIVE.
 - NO REVISIONS SHALL BE MADE IN THESE PLANS WITHOUT THE APPROVAL OF THE COUNTY ENGINEER.
 - USE STANDARD MANHOLE FRAMES AND COVERS, S.A. 117, EXCEPT AS NOTED.
 - USE STANDARD STRENGTH PIPE EXCEPT AS NOTED.
 - USE CEMENT MORTAR FOR ALL VITRIFIED CLAY PIPE JOINTS.
 - RESURFACE ALL TRENCH WITHIN PAVED AREA TO MEET L. A. COUNTY ROAD DEPT. OR CALIF. STATE HIGHWAY DEPT. REQUIREMENTS IN ACCORDANCE WITH PERMITS.
 - INDICATE FOUR FEET OF STOPS AT POINTS OF INTERFERENCE WITH POLES, S.A. 319.
 - HOUSE LATERALS TO BE CONSTRUCTED WITH INVERTS AT PROPERTY LINE, 8" ANY BELOW CURB GRADE EXCEPT AS NOTED.
 - ALL STRUCTURES SHALL BE BUILT WITH STRUCTURE, S.A. 104, EXCEPT AS NOTED.
 - FOR ALLOWABLE LEAKAGE TEST USE FORMULA NO. 1, S.A. 104, EXCEPT AS NOTED.
 - MANHOLE TOPS IN UNIMPROVED HIGHWAYS TO BE 6" ABOVE FINISHED GROUND.



S.M. C.S. 38-2 Hacienda Blvd. & L.A. & Orange Co. Line & under a Standard Precast Man. 12" below the surface and protected by a cast iron cover lettered County Surveyors Monument 1352 43.

COLLECT CHARGES AS INDICATED
Ref. Plan A-11-56

dated 12-12-56 M. Lane



P.C. 3797 PAGE 2

NO CHARGE FOR CONNECTIONS

23,772

TRACT 22557

TRACT 22557

ANTONETTE DR.

HACIENDA BLVD

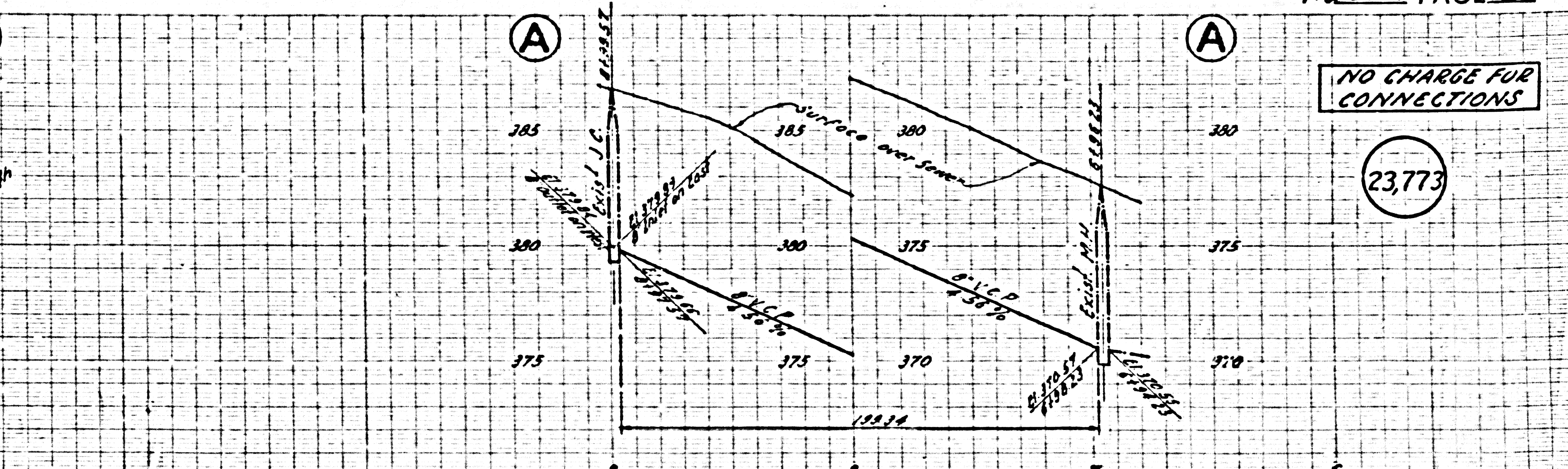
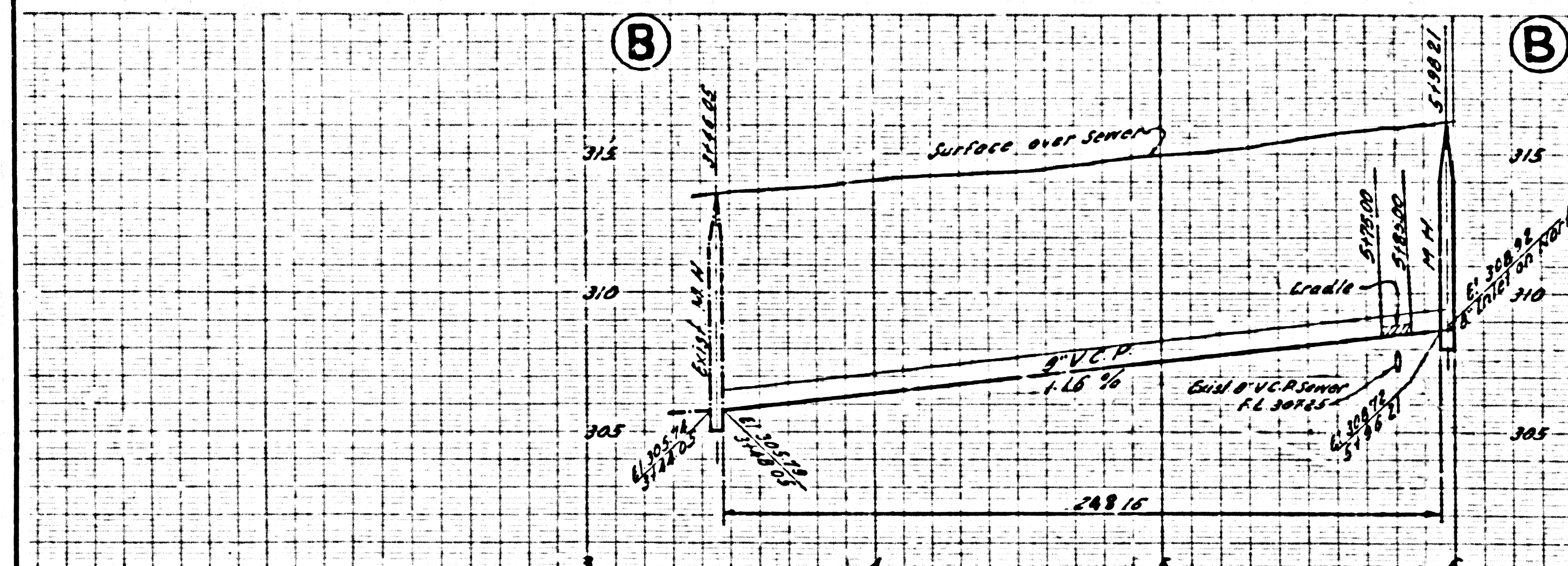
TRACT 22557

JANINE DRIVE

DRIVE

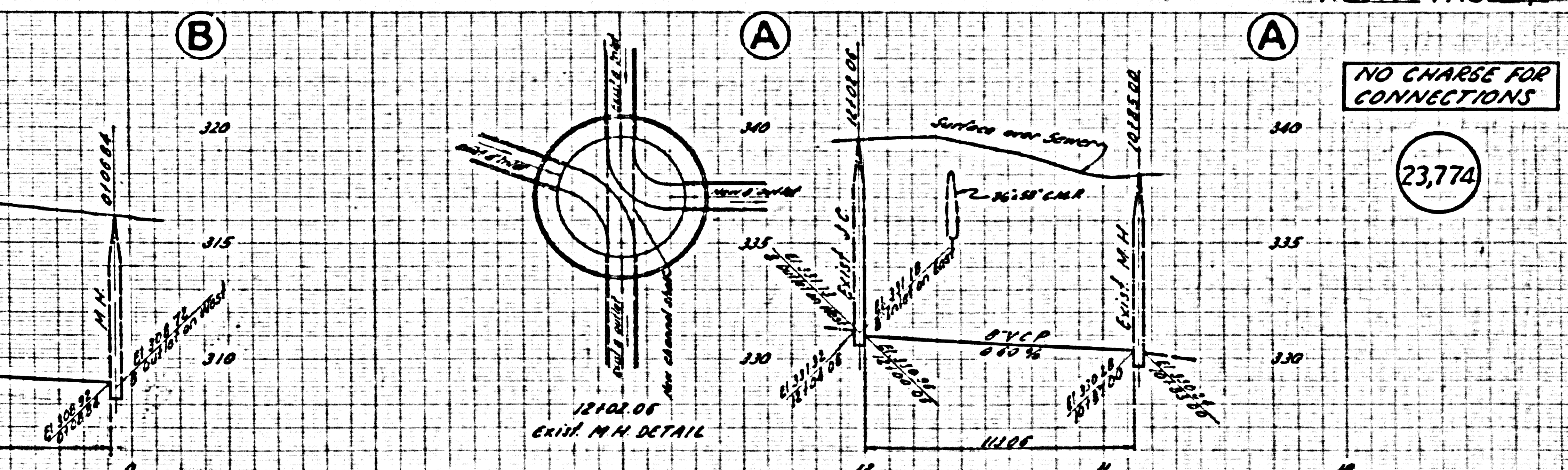
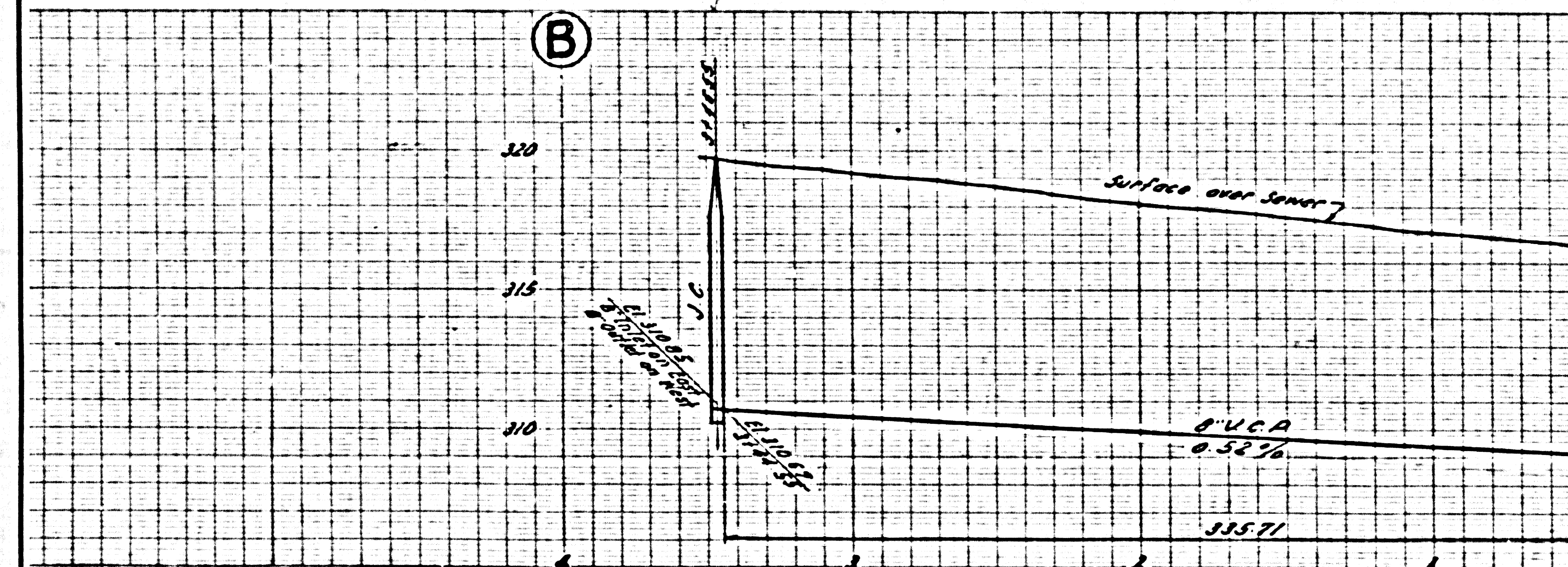
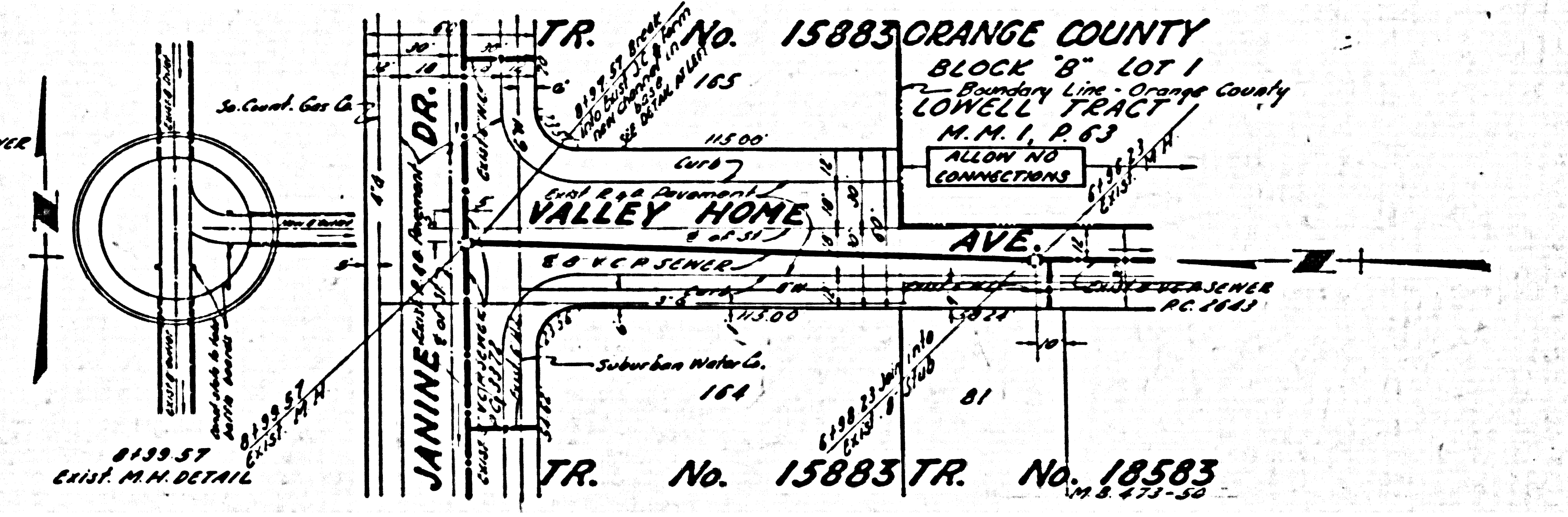
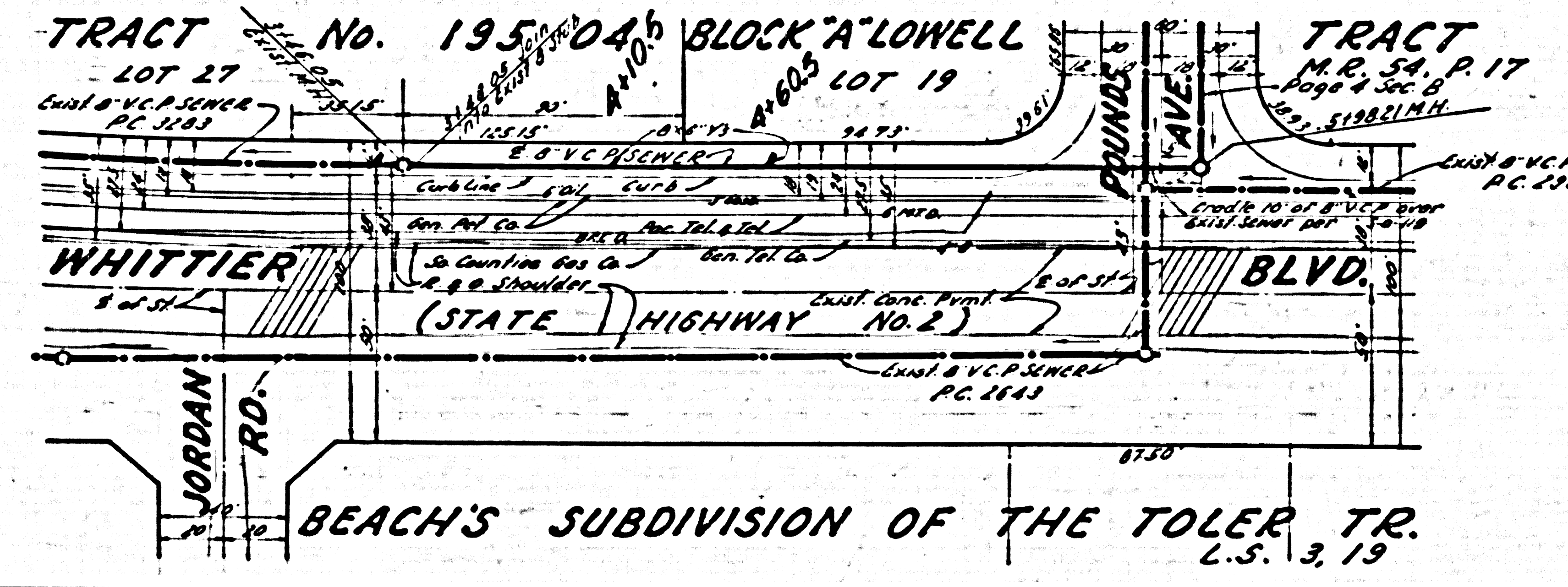
TRACT 22557

TRACT 22557



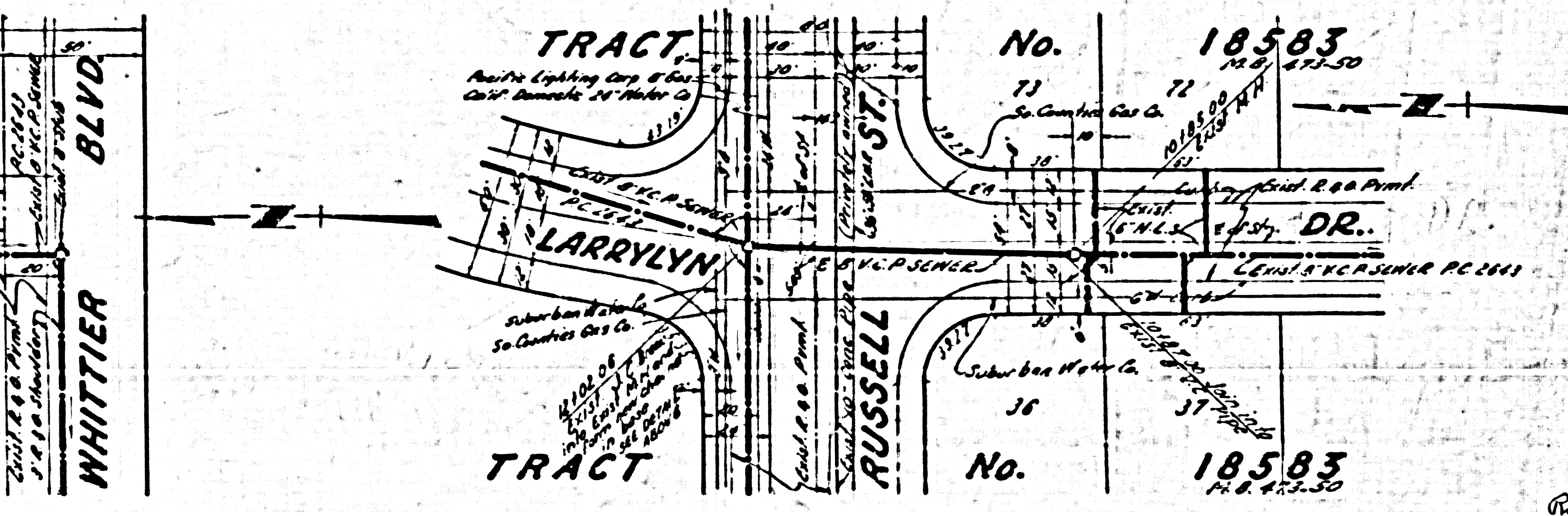
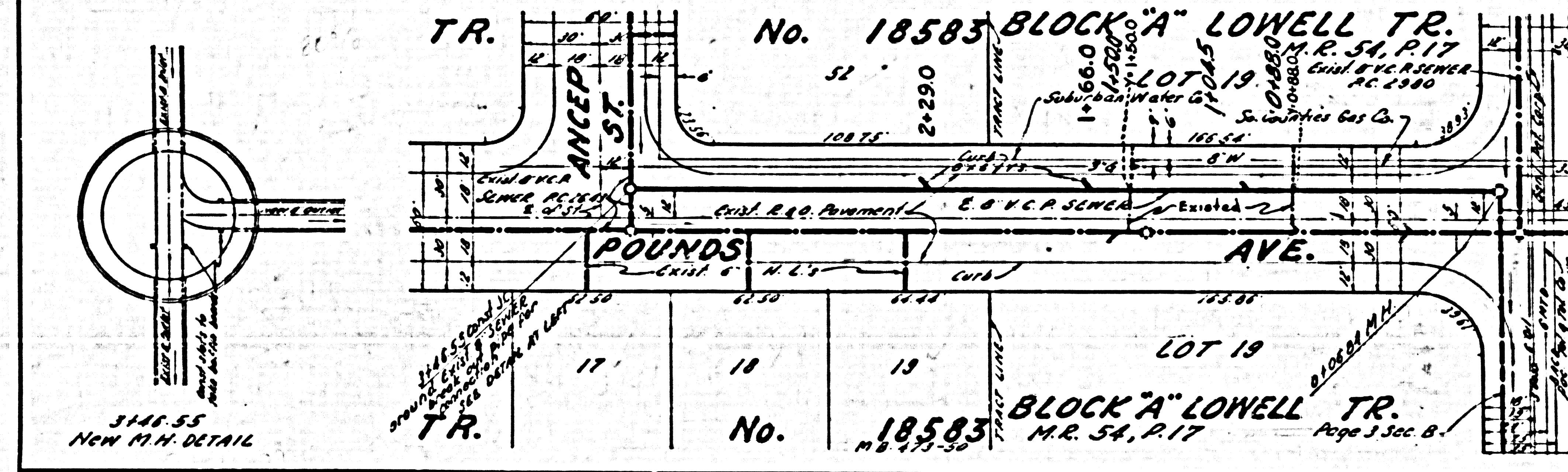
NO CHARGE FOR CONNECTIONS

23,773



NO CHARGE FOR CONNECTIONS

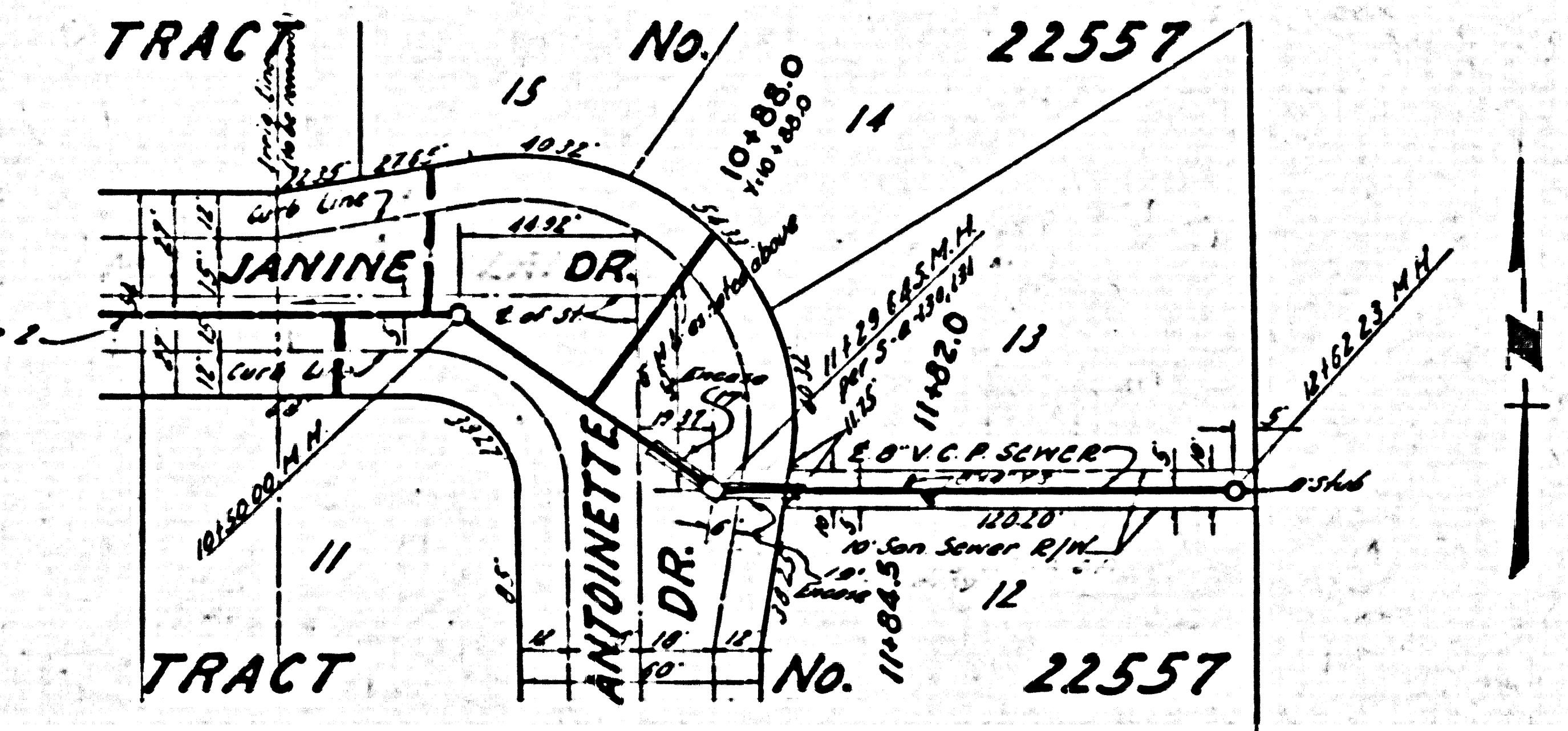
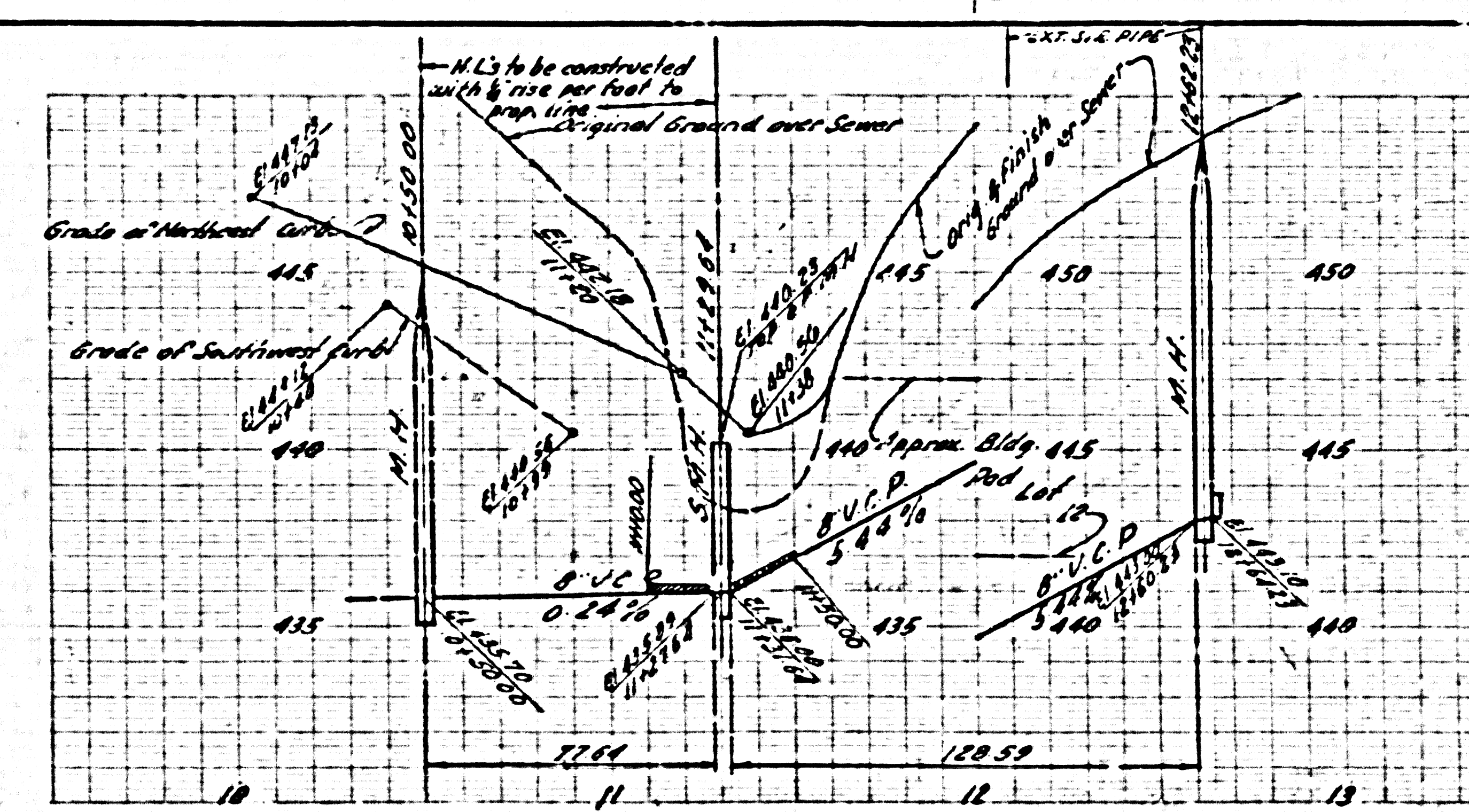
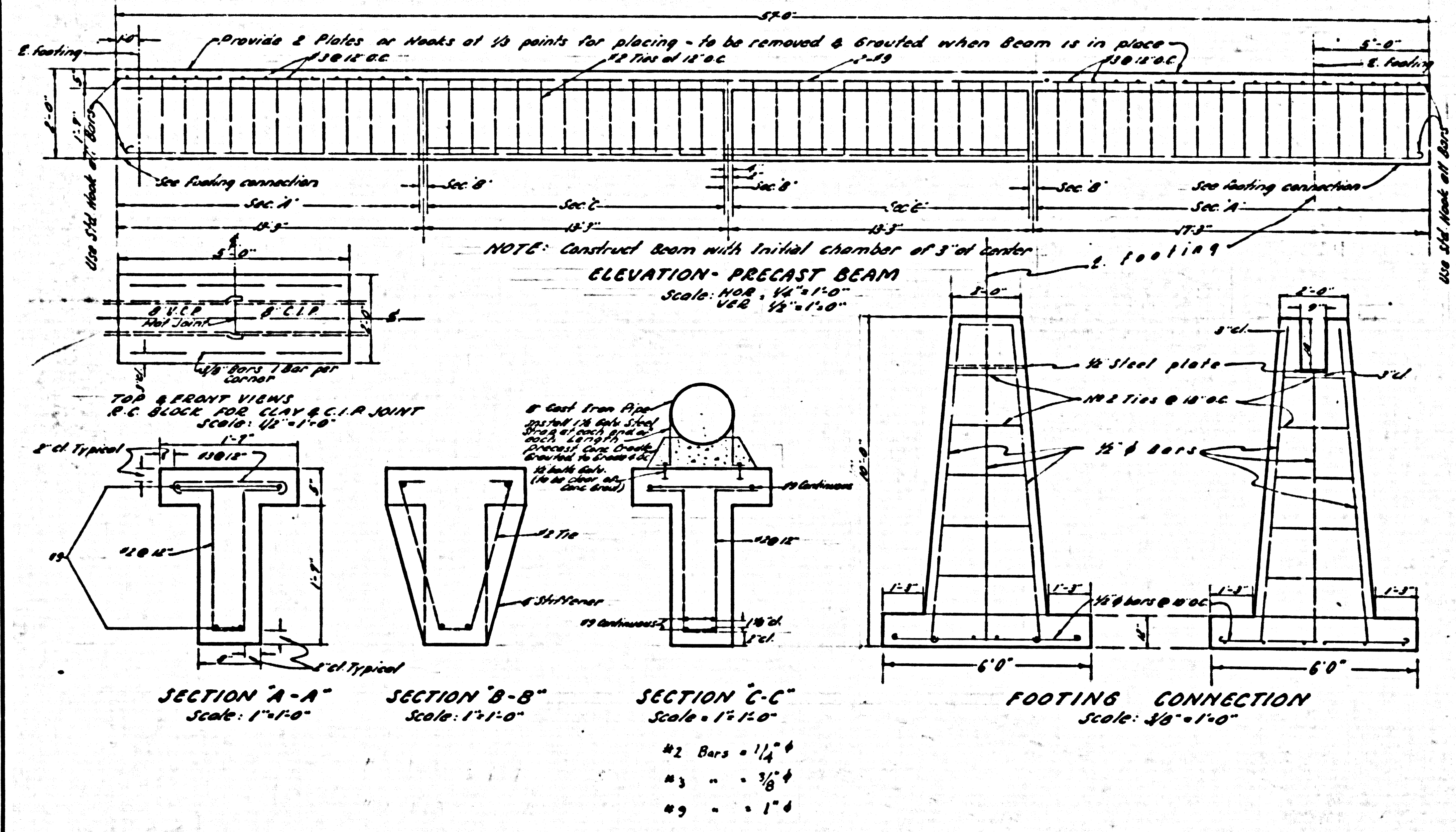
23,774



U.S. GEOLOGICAL SURVEY, WASHINGTON, D.C.

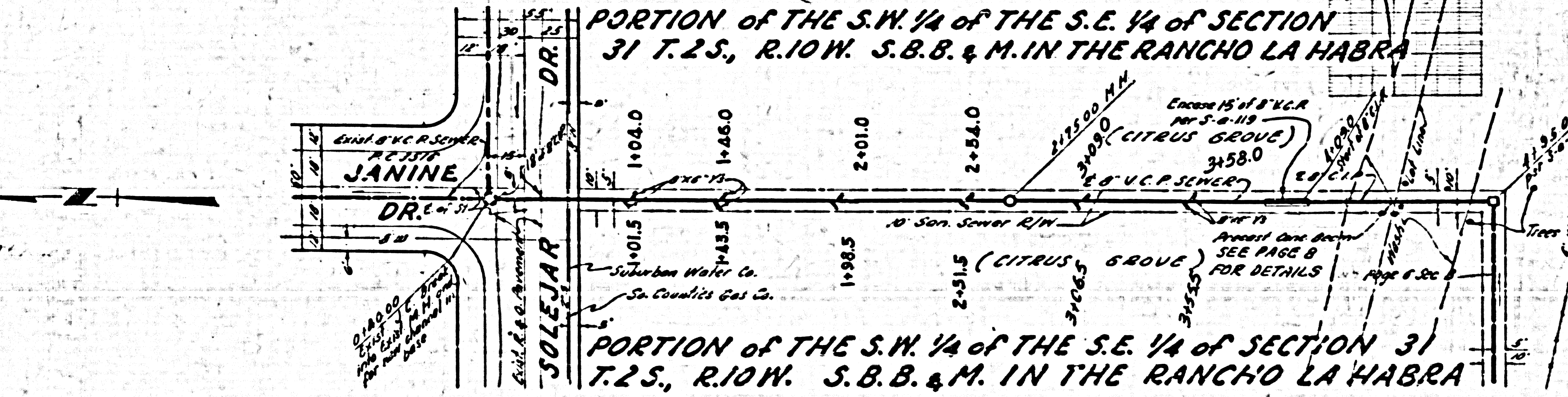
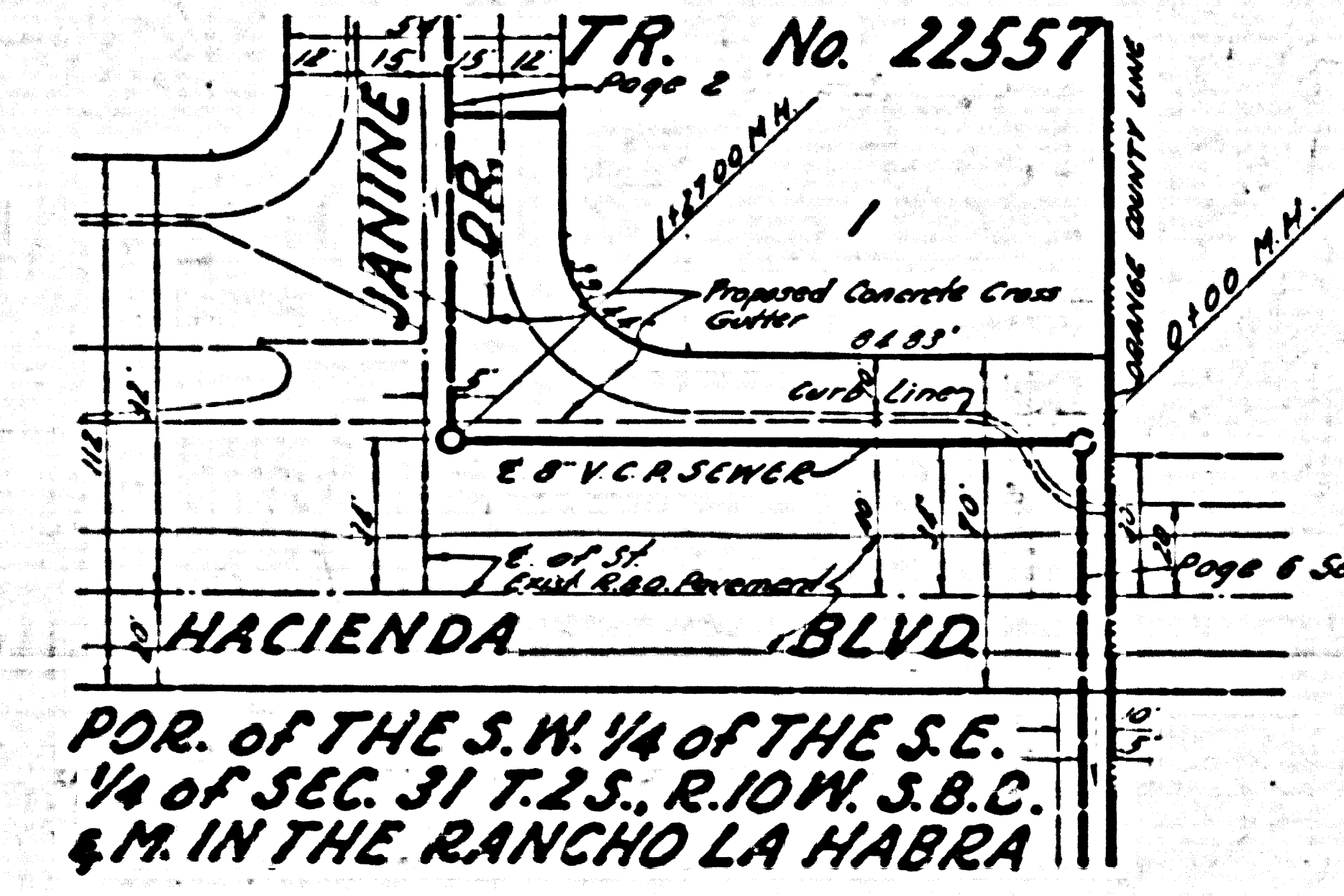
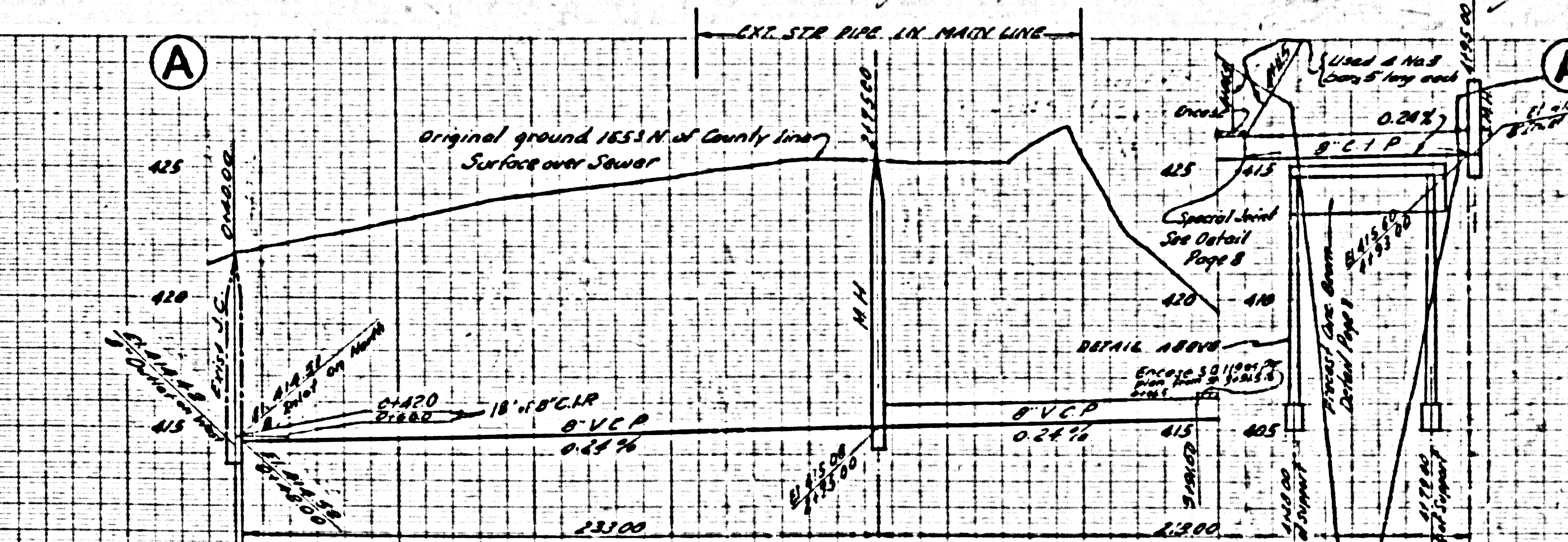
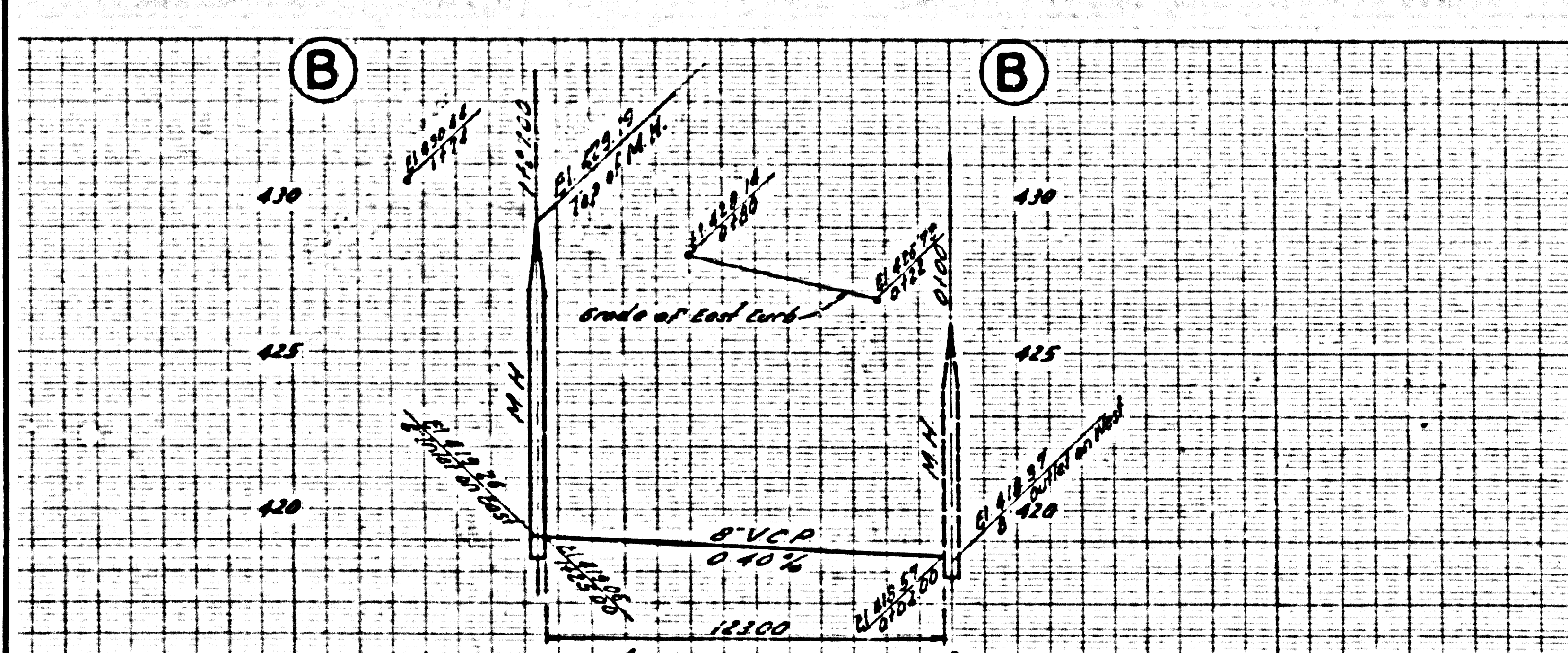
NO CHARGE FOR CONNECTIONS

23,778



NO CHARGE FOR CONNECTIONS

23,777



POR. OF THE S.W. 1/4 OF THE S.E. 1/4 OF SEC. 31 T.2S., R.10W. S.B.C. & M. IN THE RANCHO LA HABRA

PORTION OF THE S.W. 1/4 OF THE S.E. 1/4 OF SECTION 31 T.2S., R.10W. S.B.B. & M. IN THE RANCHO LA HABRA

PORTION OF THE S.W. 1/4 OF THE S.E. 1/4 OF SECTION 31 T.2S., R.10W. S.B.B. & M. IN THE RANCHO LA HABRA