

FOR CONNECTIONS

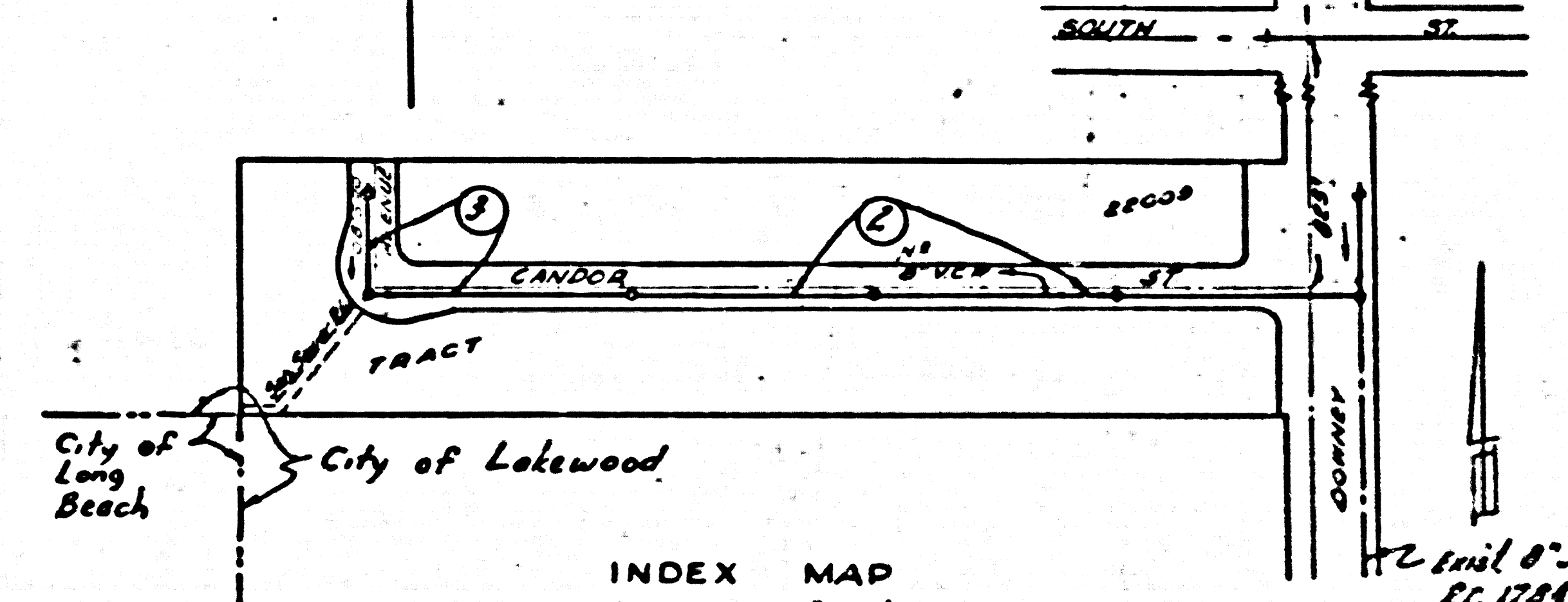
SHEET	PAGES
1	1-3

NO CHARGE FOR CONNECTIONS
2x Grade 7-12-55

NOTE: BELLFLOWER BLDG DIST NO 4

- Provide stakes on the property lines or property lines produced at right angles to the sewer line at the corner line of each manhole.
- No representative of the City Engineer will survey or layout any portion of the work.
- The owner or his authorized representative shall furnish the City Engineer with grade sheets and stations for all house laterals and Y branches and shall provide stakes for them at their proper locations with stationing plainly marked. Any change in location shall be requested in writing by the owner or his representative.
- No revisions shall be made in these plans without the approval of the City Engineer.
- Use standard manhole frames and covers, S-a-117.
 - Use standard strength pipe except as noted.
 - Use cement mortar for all vitrified clay pipe joints.
 - Reurface all trench within paved area to meet L.A. County Road Dept or California State Highway Dept requirements in accordance with permit.
 - Excise four feet of sewer at points of interference with poles, S-a-119.
 - House laterals to be constructed with inverts at property line $\frac{1}{2}$ feet below curb grade except as noted.
 - All structures shall be brick sewer structures, S-a-104.
 - For allowable leakage test, see Formula No. 1, Spec's., Sec. 51.
 - Manhole tops in unimproved Rights-Of-Way to be 6" above finish grade.

*B.M. 572549 81 3200
 1/4" NE Corner of Gas Station
 in conc. walk 500' South of center
 line of South Street 270' West of center
 line of Donny Avenue.*



INDEX MAP
 SCALE 1" = 100'
 TRACT NO 22009
 RC 3798

Staked 8-13-56 W. Kern

Trim Line

PROFILE, ALIGNMENT AND GRADE OF
SANITARY SEWERS
 TO BE CONSTRUCTED IN
TRACT NO 22009

*P.C. 3798
 Page 1*

23,271
 (3)

PRIVATE CONTRACT NO. 3798
 W. S. 32
 ONE SHEET

Scale: VERT. 1" = 4'
 HORIZ. 1" = 40'
 DEC. 1955

PREPARED IN THE OFFICES OF
BARCLAY ENGINEERING CO.

John A. Lamb
 C.E.C. No. 2877

FOR LEGEND SEE PLAN NO. S-a-64

NOTE:

Grades to which this improvement is to be constructed are shown on plans and profiles. Grade points for top of curbs, center line of streets, or center line of alleys are shown by circles on profiles. At all points between designated points the grade shall be established as to conform to a straight line drawn between said designated points.

Elevations are in feet above U.S.C. & G.S. See Level Datum of 1928.

This drawing and the data hereon are hereby made a part of the specifications.

Work shall be constructed according to specifications filed in the office of the City Engineer and shall be constructed only in the presence of the City Engineer.

Before work can be started, the contractor must obtain a permit to excavate in City streets from the L.A. County Road Dept., 108 W. 2nd St. and make a deposit with the City Engineer, Room 224, 224 1/2 South Broadway, sufficient to cover the cost of construction inspection and record plans.

Approval of this plan by the City of Lakewood does not constitute a representation as to the accuracy of the location of or the existence or non-existence of any underground utility, pipe, or structure within the limits of this project. This note applies to all sheets.

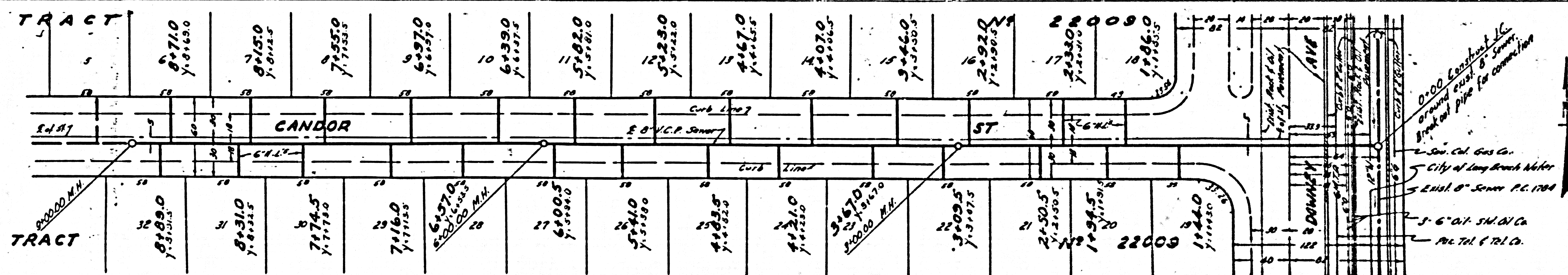
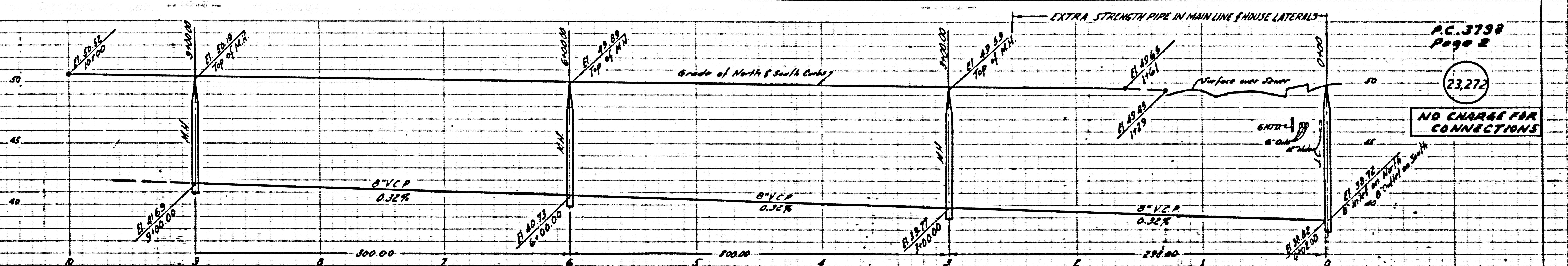
If work is to be done in a State Highway, a permit must be obtained from the State of California, Division of Highways, 120 South Spring Street.

CITY OF LAKEWOOD, CALIFORNIA

Approved, John A. Lamb City Engineer
 Approved, A. M. Rawn
 Chief Engr. of SAN. DIST. NO. 4
A.P. Collins
 District Engineer
 Dated this 12th day of December, 1955.
 Office of City Engineer, P.O. Box 7160

TRACT NO 22009
 RC 3798
 18752-A
 18752-B

Trim Line

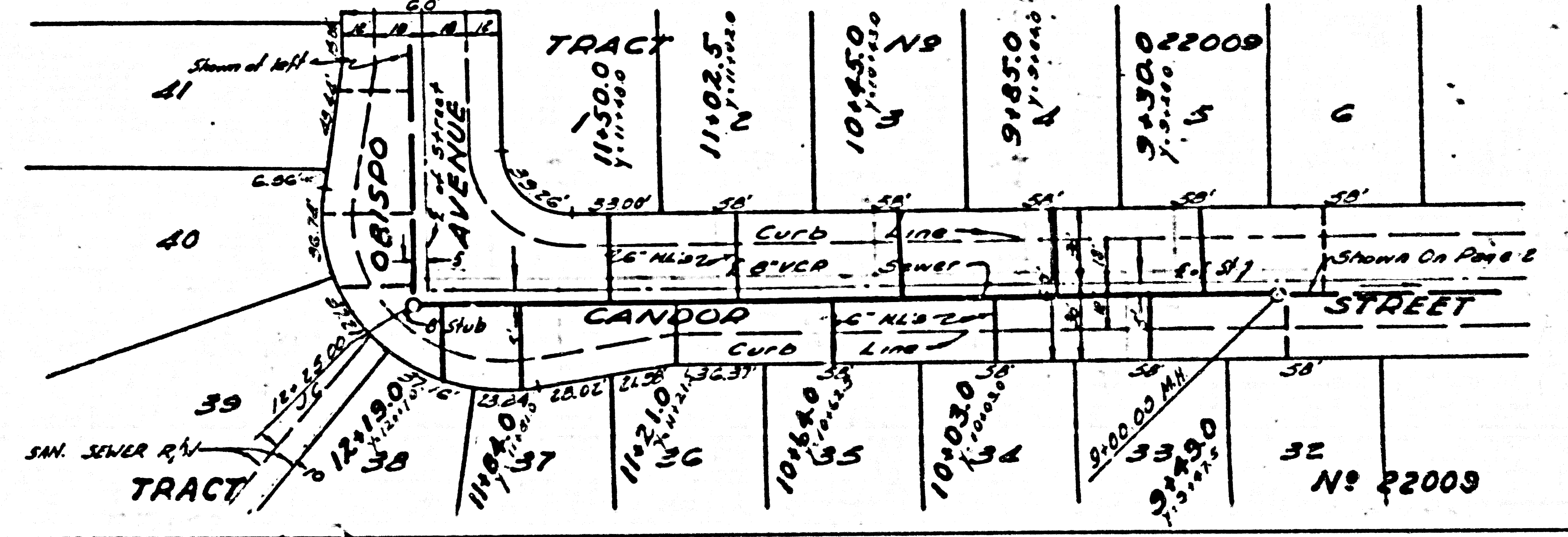
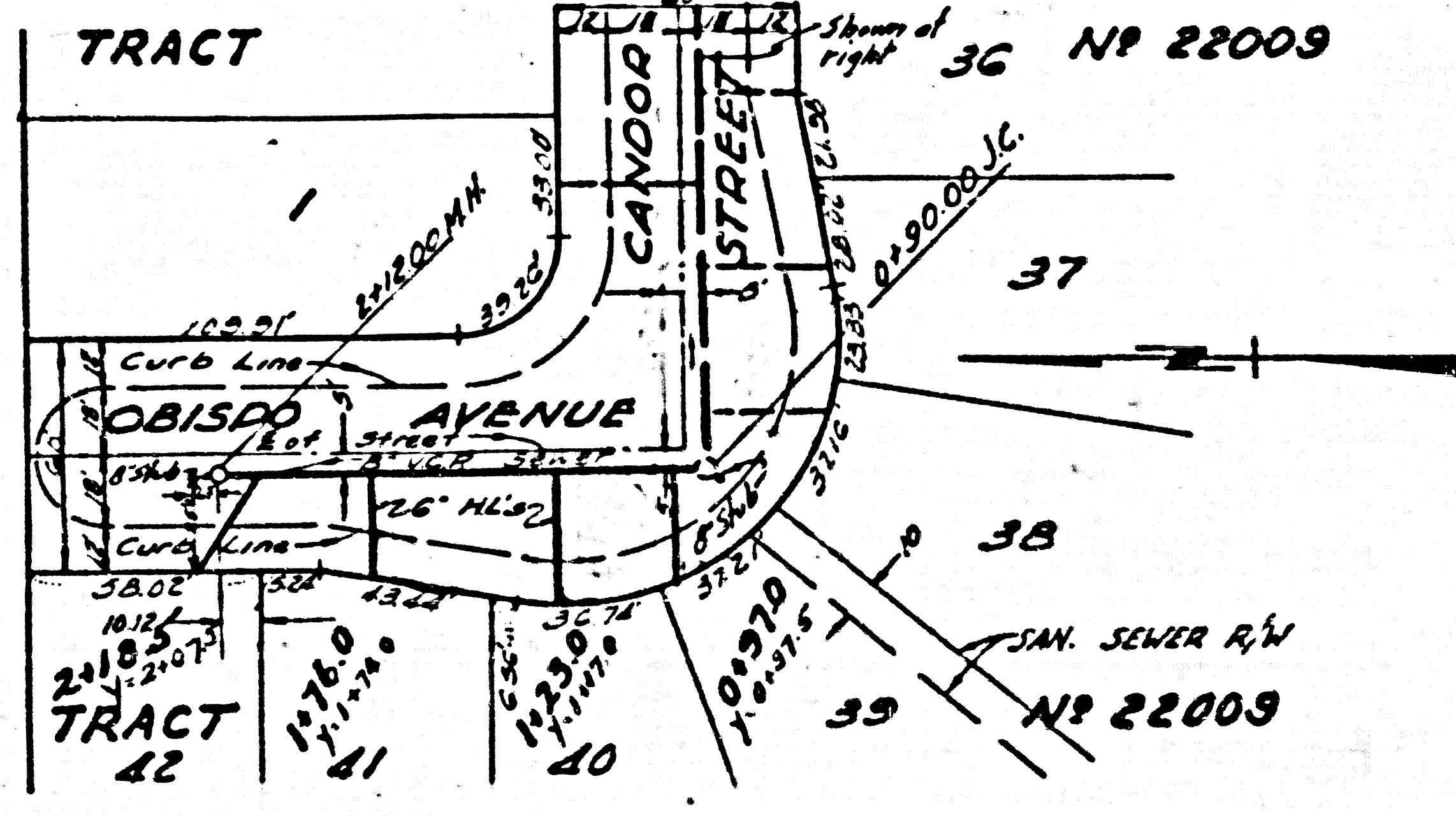
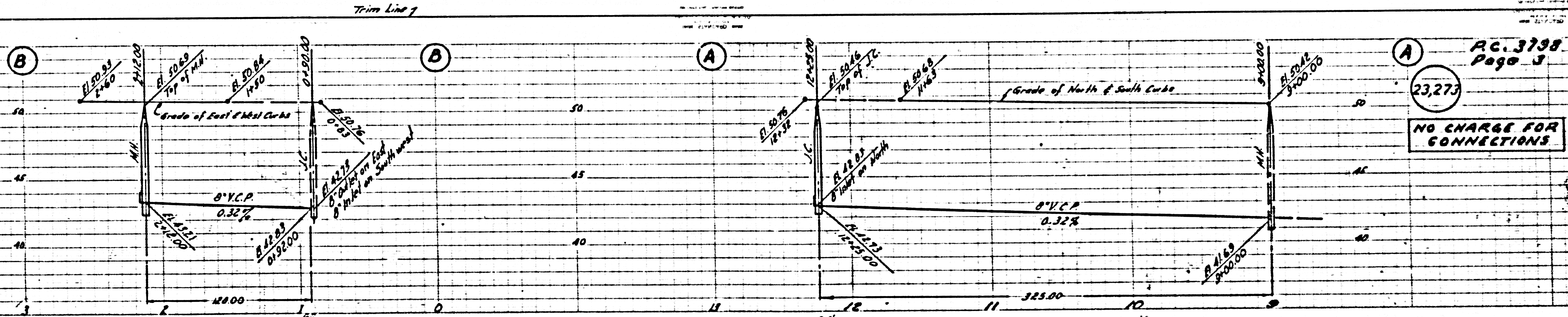


P.C. 3798
Page 2
23,272
NO CHARGE FOR CONNECTIONS

0'-00" Conduits, etc.
City of Long Beach Water
Encl. 8" Sewer P.C. 1788
5" 6" DI. S.W. DI. CO.
M.L. TR. & T.R. CO.

20

PC. 3798



PC. 3798
Page 3

23,275

NO CHARGE FOR
CONNECTIONS