

Trim Line

LOMITA BLDG DIST. N^o 7-L

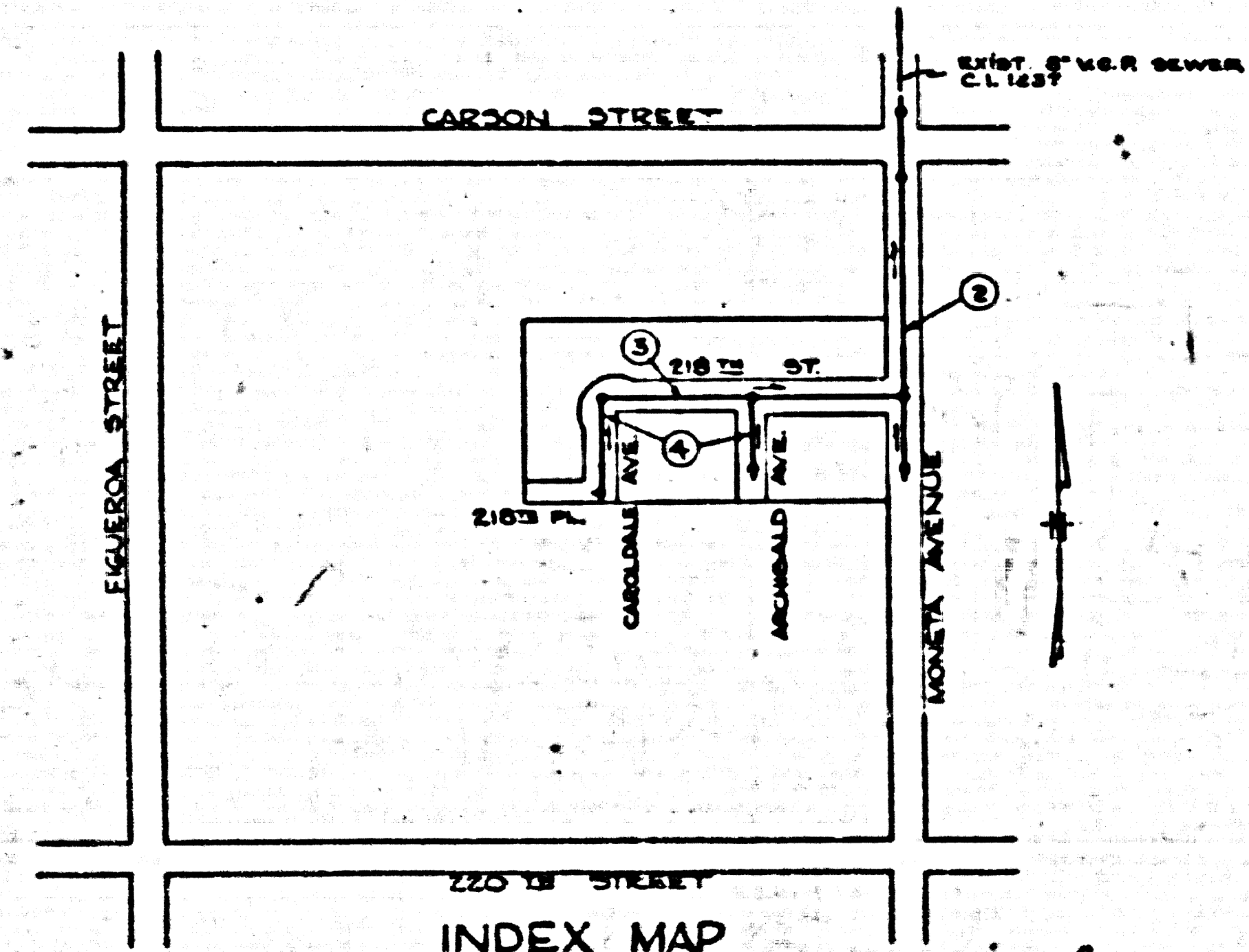
- NOTE:**
Provide stakes on the property lines or property lines produced at right angles to the cover line of the center line of each manhole.
- No representative of the County Engineer will survey or layout any portion of the work.
- The owner or his authorized representative shall furnish the County Engineer with grade sheets and stations for all house laterals and Y branches and shall provide stakes for them at their proper locations with stationing plainly marked. Any change in location shall be requested in writing by the owner or his representative.
- No revisions shall be made in these plans without the approval of the County Engineer.
1. Use standard manhole frames and covers, S-a-117.
 2. Use standard strength pipe except as noted.
 3. Use cement mortar for all vitrified clay pipe joints.
 4. Resurface all trench within paved area to meet L.A. County Road Dept. or California State Highway Dept. requirements in accordance with permit.
 5. Excave four feet of cover at points of interference with poles, S-a-119.
 6. House laterals to be constructed with 18" rise per foot to property line.
 7. All structures shall be brick cover structures, S-a-104.
 8. For allowable leakage test, see Formula No. 1, Spec's., Sec. 81.
 9. The Private Engineer is to furnish the House Lateral depth at the property line below the top of curb elevation for each House Lateral, on the Grid sheet.

SHEET N ^o	PAGES
1	1-4

COLLECT CHARGES AS INDICATED

See Grid S-23-56

BENCH MARK
S.Y. 503 Vol. 2-209 - Strike in
Walk, 40' S. of E. of Carson St. &
50' W. of E. of Rowena Ave.
ELEV. 31.080



INDEX MAP
SCALE: 1" = 500'
TRACT N^o 21699
P.C. 3799

checked 12-17-56 Wilson

44

Trim Line

PROFILE ALIGNMENT AND GRADE OF
SANITARY SEWERS
TO BE CONSTRUCTED IN
TRACT N^o 21699

P.C. 3799
PAGE 1

23,788
(4)

PRIVATE CONTRACT NO. 3799
W. S. 28
1 SHEET
Scale: VERT. 1" = 4' HORIZ. 1" = 40' DATE: DEC., 1956
PREPARED IN THE OFFICES OF
SOUTH BAY ENGINEERING CO.

Proposed by P.C.E. No. 3799
FOR LEGEND SEE PLAN NO. S-a-64

NOTE:
Grades to which this improvement is to be constructed are shown on plans and profiles. Grade points for top of curb, center line of streets, or center line of alleys are shown by circles on profiles. All other points between designated points the grade shall be established so as to conform to a straight line drawn between said designated points.

Specifications are in full above U.S.C. § 65, San Local Ordinance of 1929.

This drawing and the data herein are hereby made a part of the specifications.

Work shall be constructed according to specifications on file in the office of the County Engineer and shall be prosecuted only in the presence of the County Engineer.

Before work can be started, the contractor must obtain a permit to excavate in County streets from the L.A. County Road Dept., 100 W. 2nd St., and make a deposit with the County Engineer, Room 324, 550 San Bernardino, sufficient to cover the cost of construction inspection and record plans.

Approval of this plan by the County of Los Angeles does not constitute a representation as to the accuracy of the location of or the existence or maintenance of any underground utility, pipe, or structure within the limits of this project. This note applies to all sheets.

If work is to be done in a State Highway, a permit must be obtained from the State of California, Division of Highways, 120 South Spring Street.

COUNTY OF LOS ANGELES, CALIFORNIA

Approved, John A. Lambie County Engineer Approved, A. M. Ross
A. P. Collins
Checked by *Wilson* 5-22-56
Office of County Engineer, Box, C. E. No. 1246-C.

TRACT N^o 21699

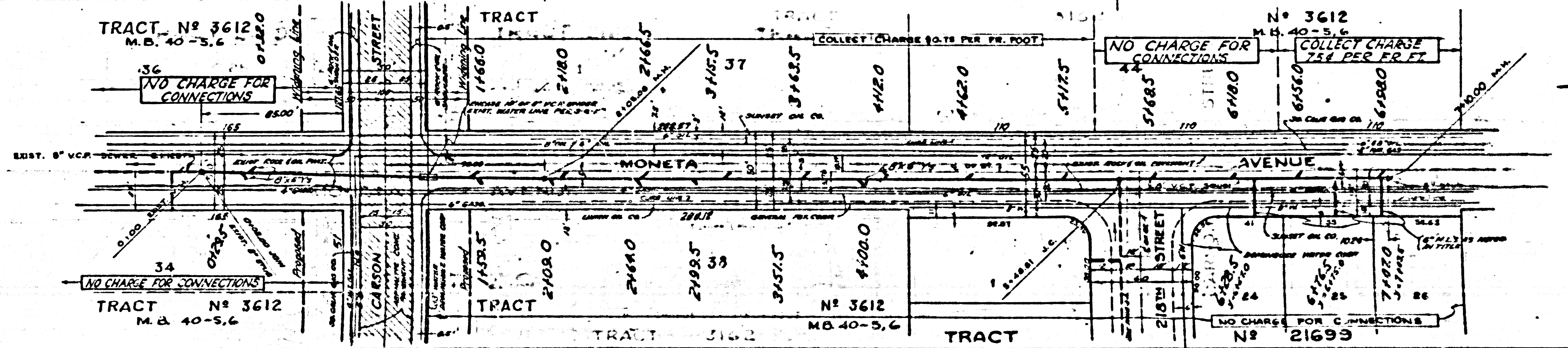
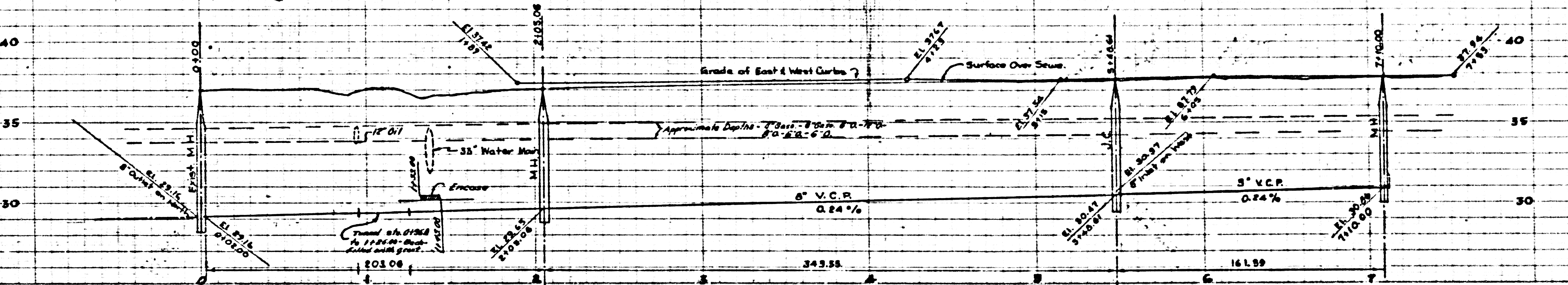
P.C. 3799

NO CHARGE FOR CONNECTIONS

23,790

COLLECT CHARGES AS INDICATED

23,789

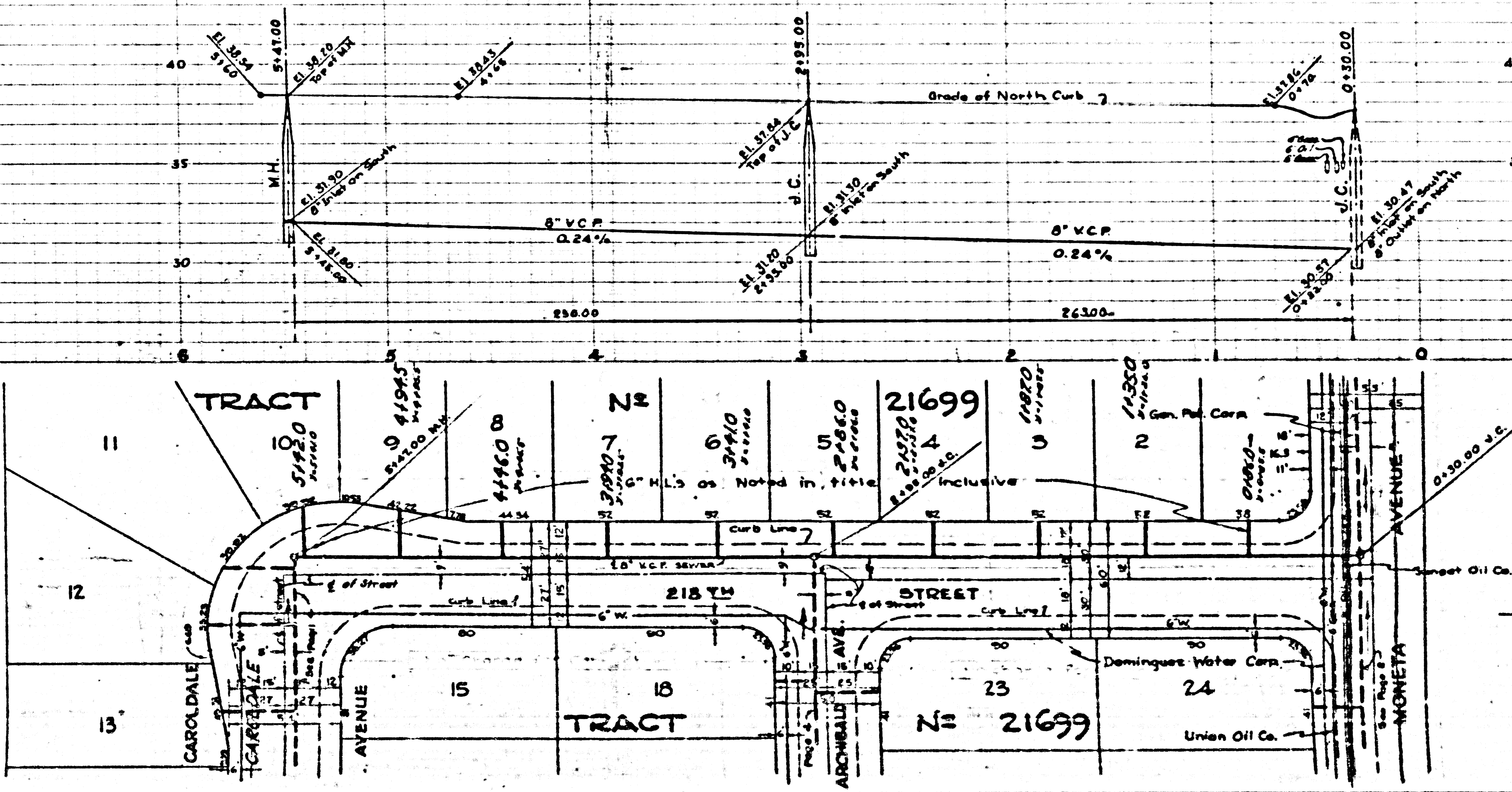


23

P.C. 3799
PAGE 4

NO CHARGE
FOR
CONNECTIONS

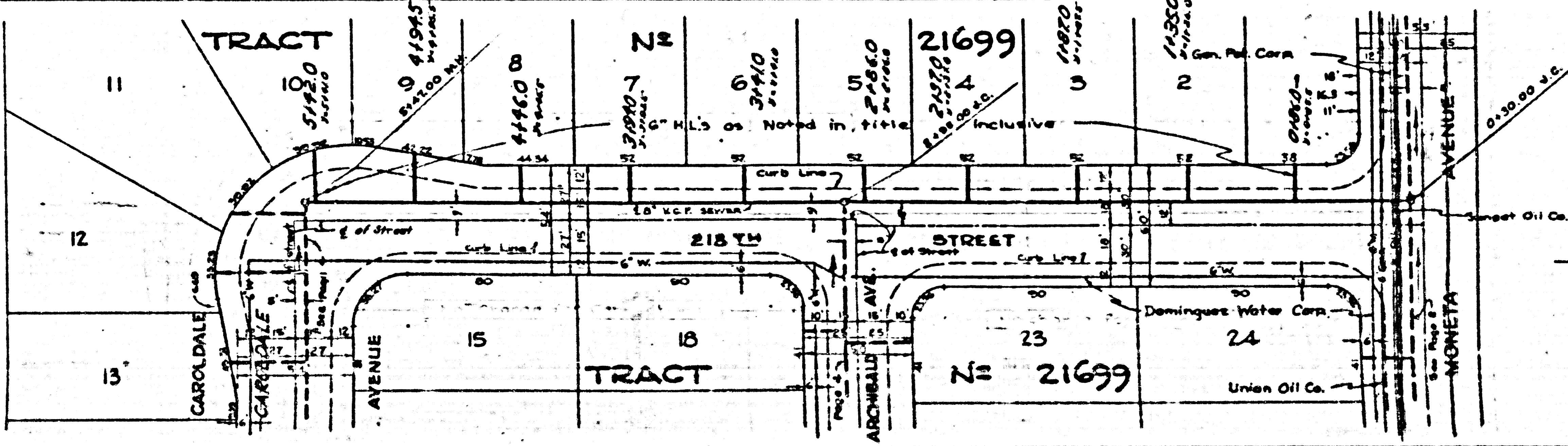
23,791



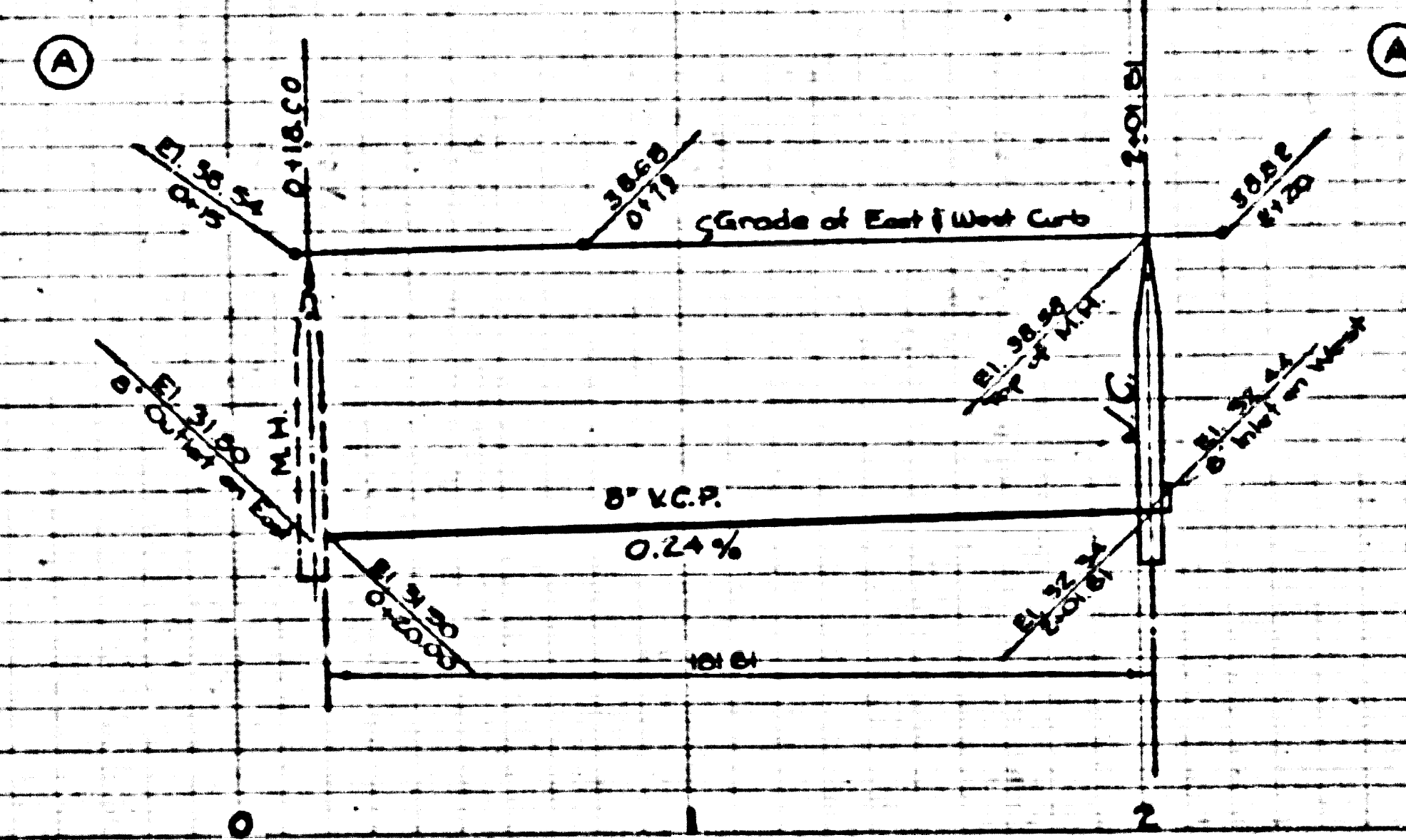
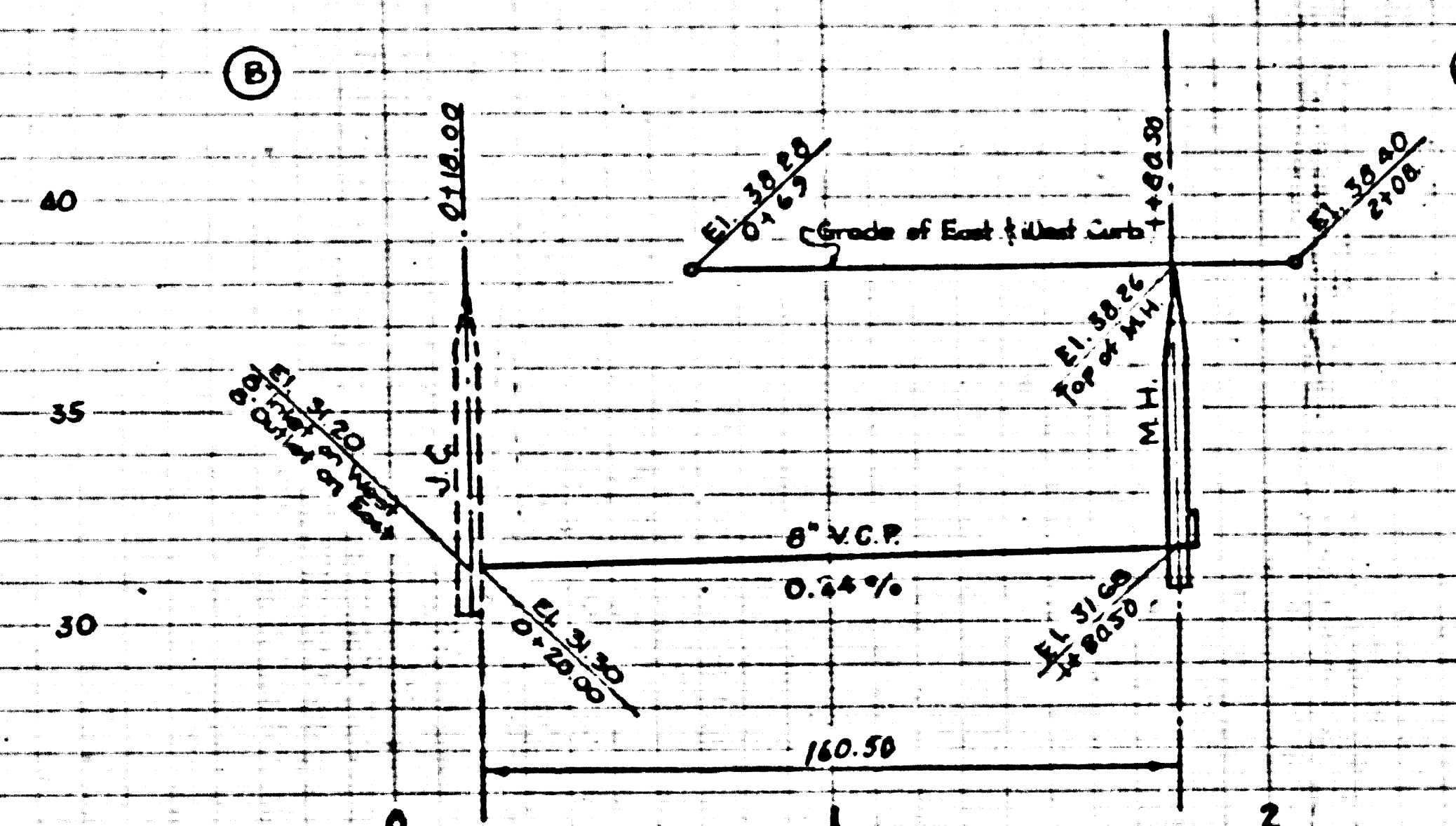
P.C. 3799
PAGE 3

NO CHARGE
FOR
CONNECTIONS

23,790



Trim Line 1

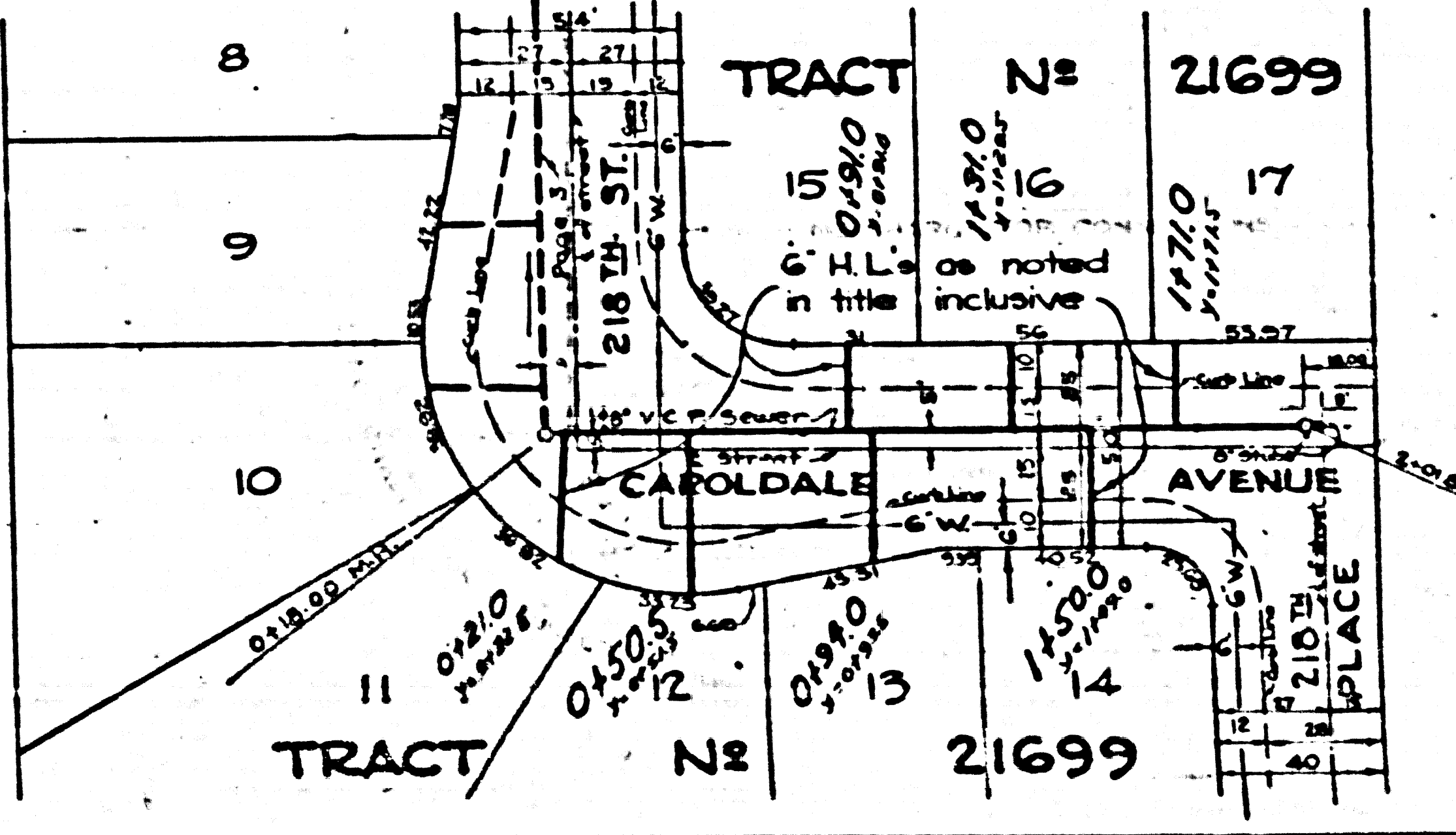
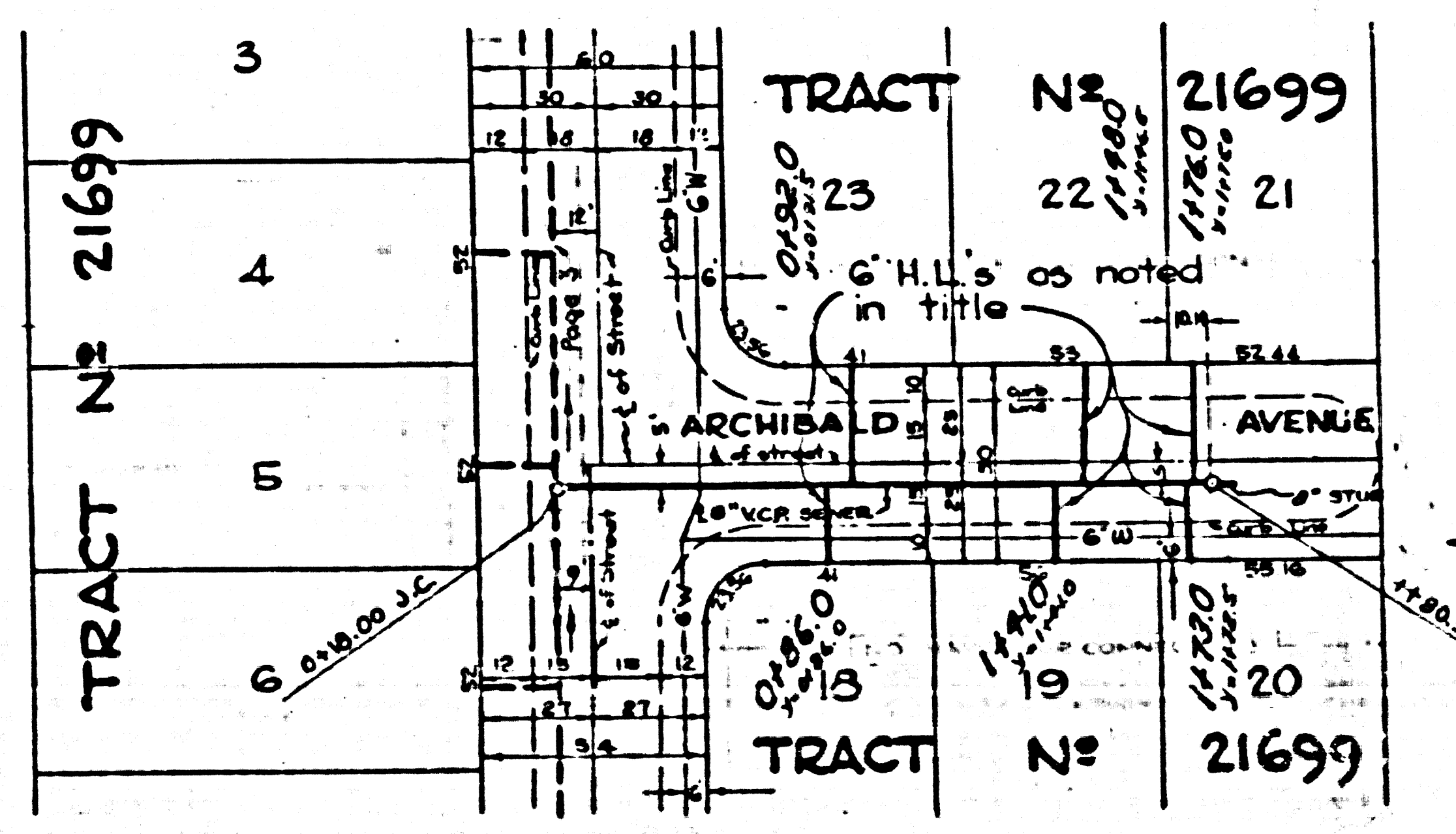


P.C. 3799
PAGE 4

NO. CHARGE
FOR
CONNECTIONS

23,791

P.C. 3799



Trim Line 2