

P.C. 3804
PAGE 2

22,679

BENCH MARK: SY-3676
L & B. N. South Curb, 14th St., 75' ±
West of E. of Woodruff Ave.
1954 Adj. Elev. 57.836

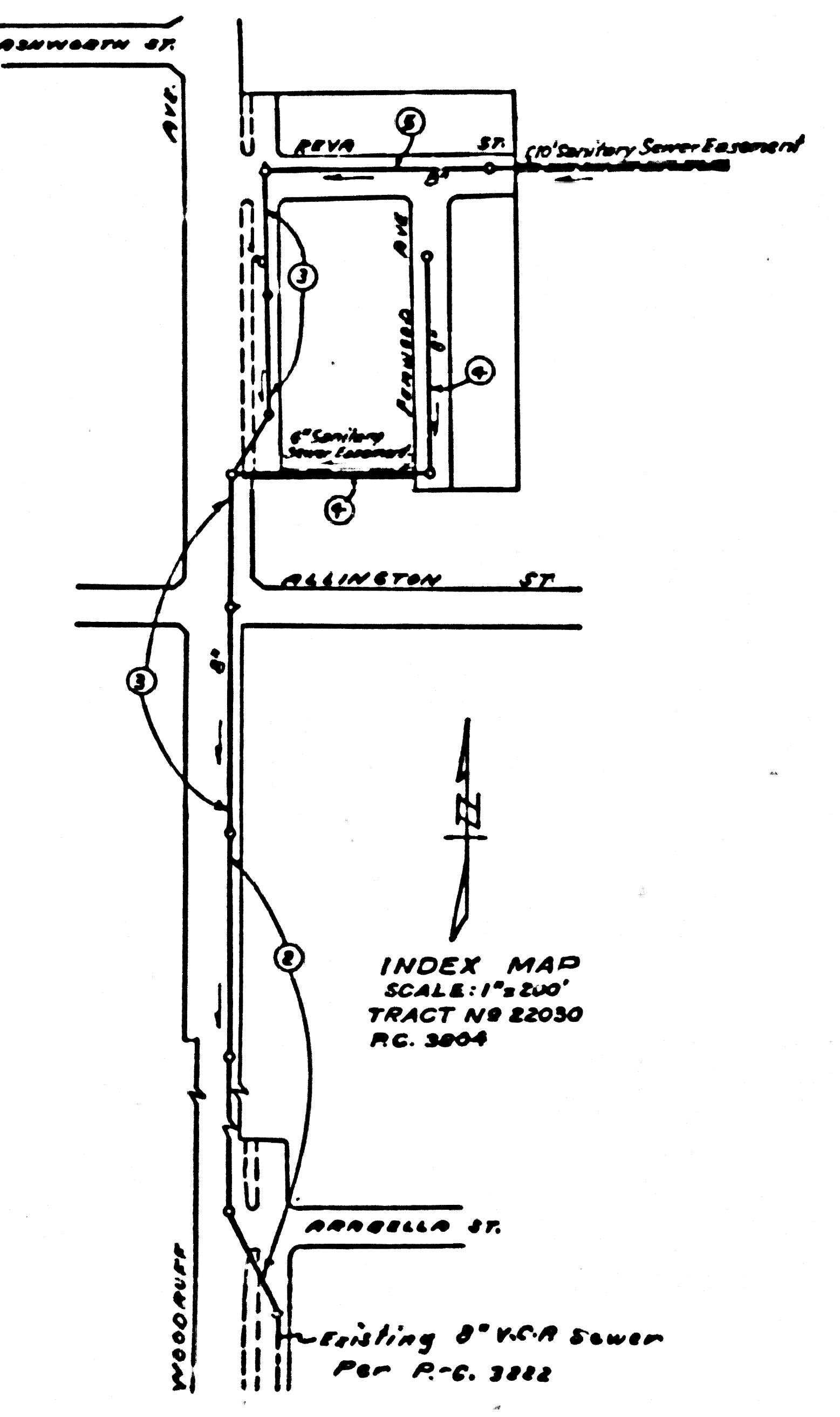
18438
346-25

1	2
3	4
5	6
7	8
9	10
11	12
13	14
15	16
17	18
19	20
21	22
23	24
25	26
27	28
29	30
31	32
33	34
35	36
37	38
39	40
41	42
43	44
45	46
47	48
49	50
51	52
53	54
55	56
57	58
59	60
61	62
63	64
65	66
67	68
69	70
71	72
73	74
75	76
77	78
79	80
81	82
83	84
85	86
87	88
89	90
91	92
93	94
95	96
97	98
99	100

TABLE

SHEET NO.	PAGES
1	1-5

Checked 5-21-56 *McLaren*



BELFLOWER BLDG. DIST. NO. 4

- NOTE:**
- 1. Provide stakes on the property lines or property lines produced at right angles to the sewer line at the corner line of each manhole.
 - 2. No representative of the County Engineer will survey or layout any portion of the work.
 - 3. The owner or his authorized representative shall furnish the County Engineer with grade sheets and stations for all house laterals and T branches and shall provide stakes for them at their proper locations with stationing, plainly marked. Any change in location shall be requested in writing by the owner or his representative.
 - 4. No revisions shall be made in these plans without the approval of the County Engineer.
 - 5. Use standard manhole frames and covers, S-a-117.
 - 6. Use standard strength pipe except as noted.
 - 7. Use cement mortar for all vitrified clay pipe joints.
 - 8. Resurface all trench within paved area to meet L.A. County Road Dept or California State Highway Dept. requirements in accordance with permit.
 - 9. Excavate four feet of sewer at points of interference with poles, S-a-119.
 - 10. House laterals to be constructed with smooth at property line 5 feet below curb grade except as noted.
 - 11. All structures shall be brick sewer structures, S-a-104.
 - 12. For alternate leakage test, use Formula No. 1, Spec's, Sec. 51.
 - 13. Manhole tops in unimproved Right-of-Way to be 6" above fourth grade.

CONNECTION CHARGES
AS INDICATED
L. Carter 2-6-56

INDEX MAP
SCALE: 1" = 200'
TRACT NO. 22030
P.C. 3804

PROFILE, ALIGNMENT AND GRADE OF
SANITARY SEWERS
TO BE CONSTRUCTED IN
TRACT NO. 22030

P.C. 3804
PAGE 1

22,678

PRIVATE CONTRACT NO. 3804
W. S. 33
1 SHEET

Scale: Vertical, 1" = 4'
Horizontal, 1" = 40'
DEC. 1955

PREPARED IN THE OFFICE OF
VOORHEIS-TRINDLE-NELSON, INC.
12892 GARDEN GROVE BLVD.
GARDEN GROVE, CALIF.

C. K. T. Nelson
Reg. C.E. No. 8781

FOR LEGEND SEE PLAN NO. S-a-64

NOTE:

Grades to which this improvement is to be constructed are shown on plans and profiles. Grade sheets for top of curbs, corner line of streets, or corner line of alleys are shown by circles on profiles. At all points between designated points the grade shall be established so as to conform to a straight line drawn between said designated points.

Elevations are in feet above U.S.C. & G.S. sea level datum of 1929.

This drawing and the data hereon are hereby made a part of the specifications.

Work shall be constructed in accordance with specifications on file in the office of the County Engineer and shall be prosecuted only in the presence of the County Engineer.

Before work can be started, the contractor must obtain a permit to excavate by County street from the L.A. County Road Dept., 108 W. 2nd St. and make a deposit with the County Engineer, Room 324, 253 South Broadway, sufficient to cover the cost of construction inspection and record plans.

Approval of this plan by the County of Los Angeles does not constitute a representation as to the accuracy of the location of or the existence or non-existence of any underground utility, pipe, or structure within the limits of this project. This note applies to all sheets.

If work is to be done in a State Highway, a permit must be obtained from the State of California, Division of Highways, 120 South Spring Street.

COUNTY OF LOS ANGELES, CALIFORNIA

Approved, John A. Lamborn, County Engineer

J. P. Collins
Sanitary Engineer

Checked by: *P. K. Nelson* 2-9-56
Office of County Engineer, Reg. C.E. No. 7860

TRACT NO. 22030

P.C. 3804
PAGE 1

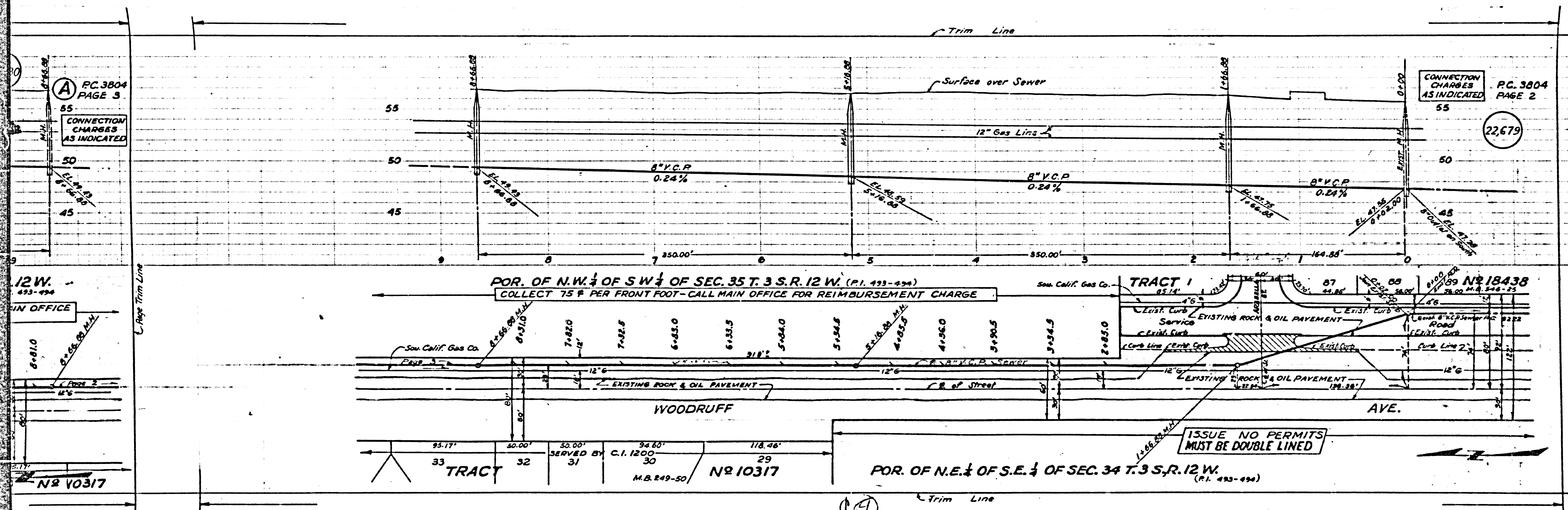
Trim Line

22,679

A P.C. 3804
PAGE 3
55
CONNECTION
CHARGES
AS INDICATED

CONNECTION
CHARGES
AS INDICATED
PAGE 2
55

22,679



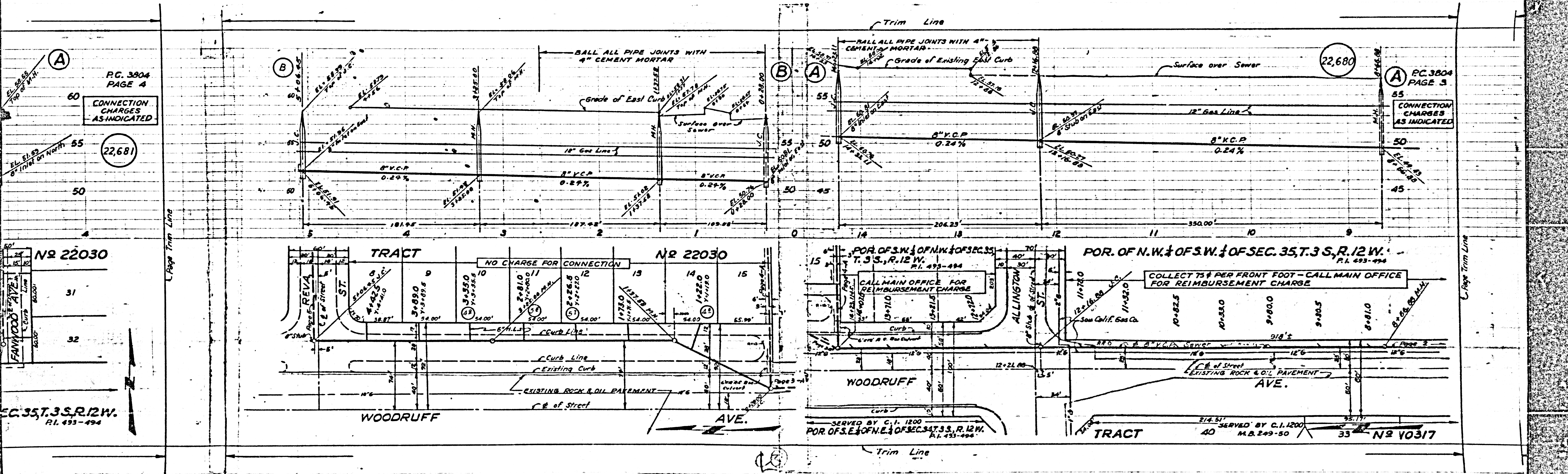
12 W.
493-494
MAIN OFFICE

POR. OF N.W. 1/4 OF S.W. 1/4 OF SEC. 35 T. 3 S. R. 12 W. (P.I. 493-494)
COLLECT 75¢ PER FRONT FOOT - CALL MAIN OFFICE FOR REIMBURSEMENT CHARGE

TRACT 1
85.14'

ISSUE NO PERMITS
MUST BE DOUBLE LINED

POR. OF N.E. 1/4 OF S.E. 1/4 OF SEC. 34 T. 3 S. R. 12 W. (P.I. 493-494)



PC. 3804
PAGE 4

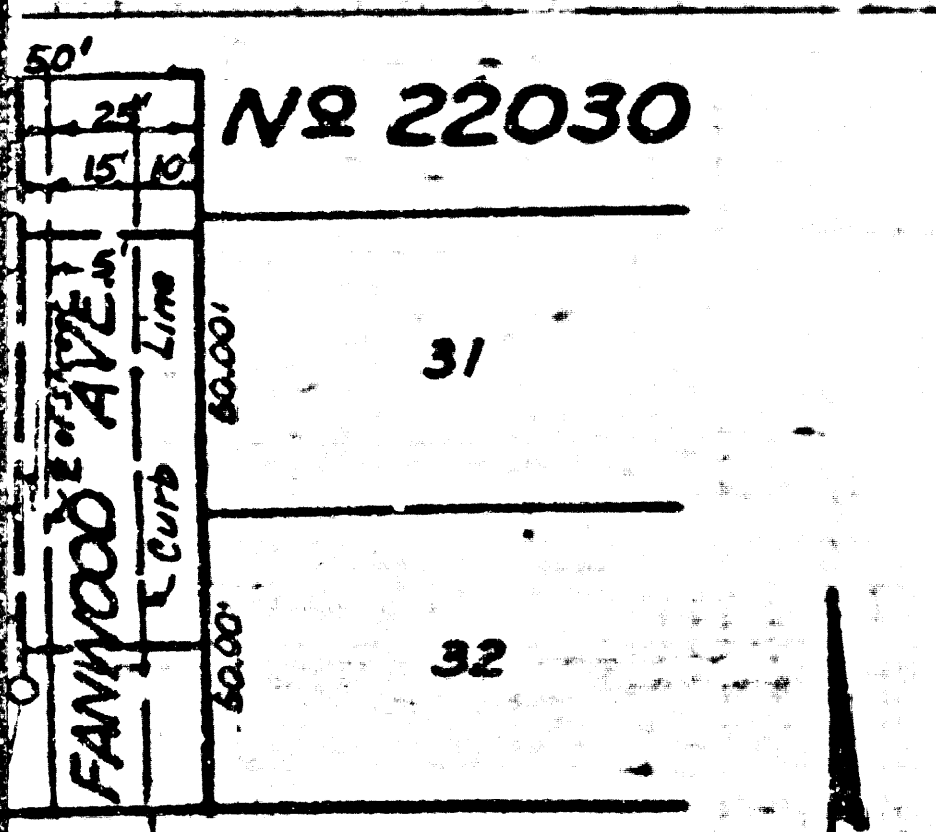
CONNECTION
CHARGES
AS INDICATED

22,681

PC. 3804
PAGE 3

CONNECTION
CHARGES
AS INDICATED

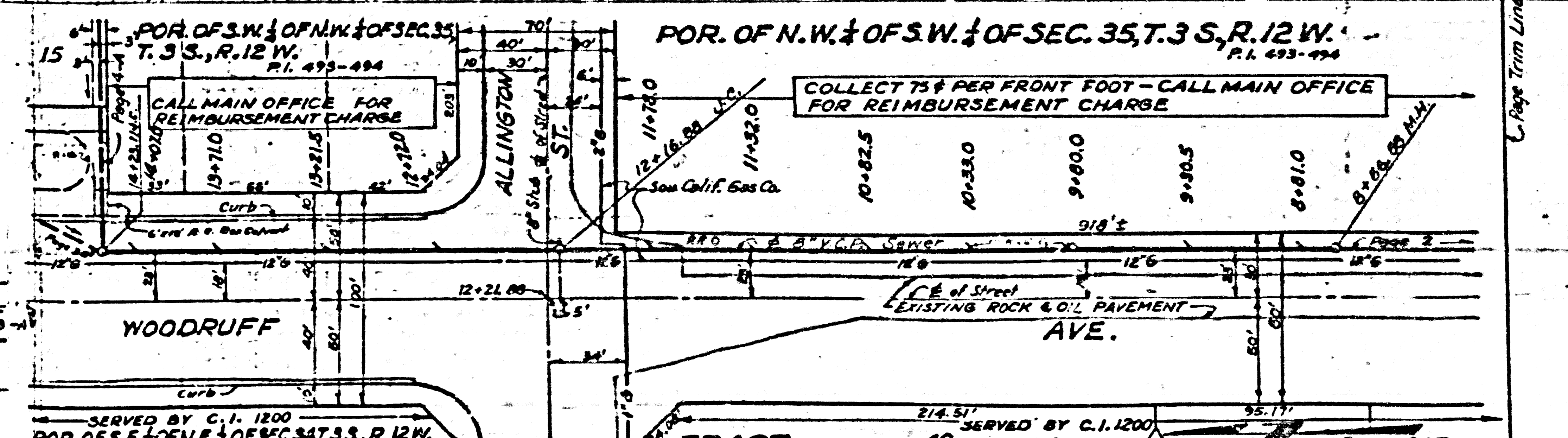
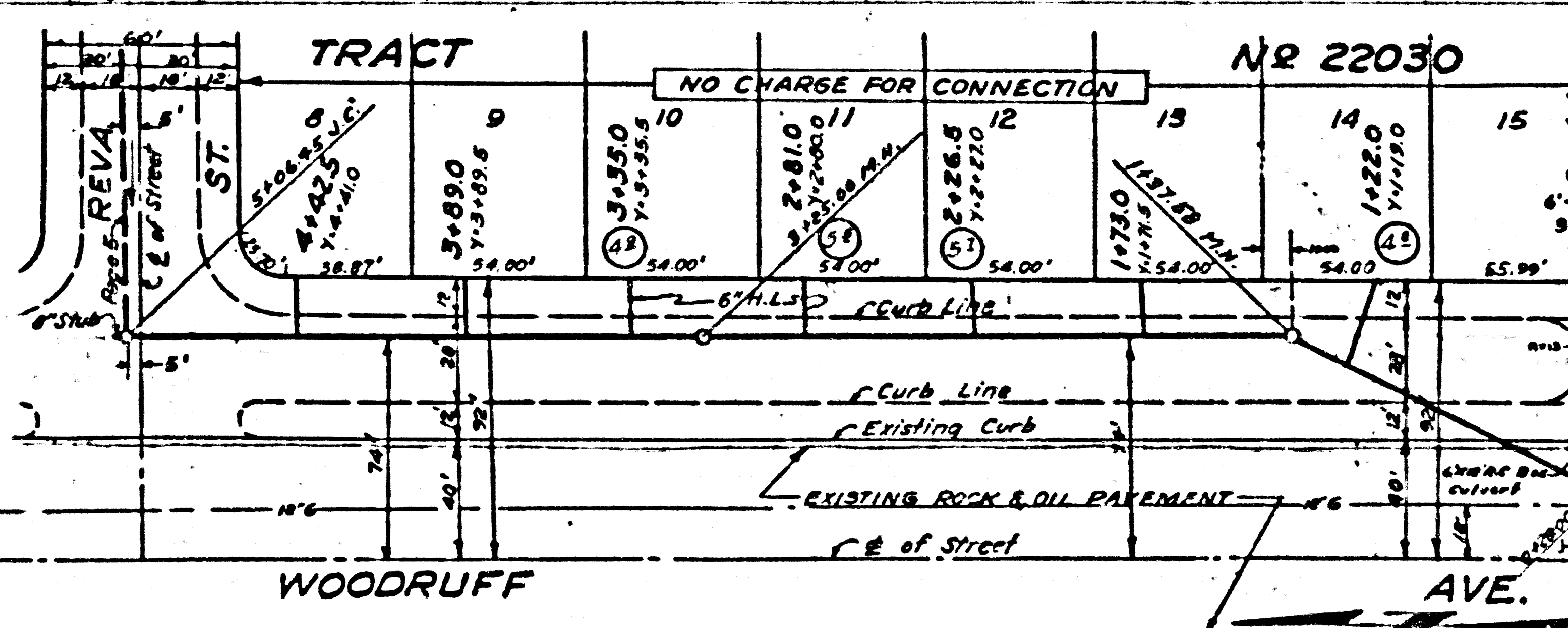
22,680



SEC. 35, T. 3 S., R. 12 W.
P.L. 493-494

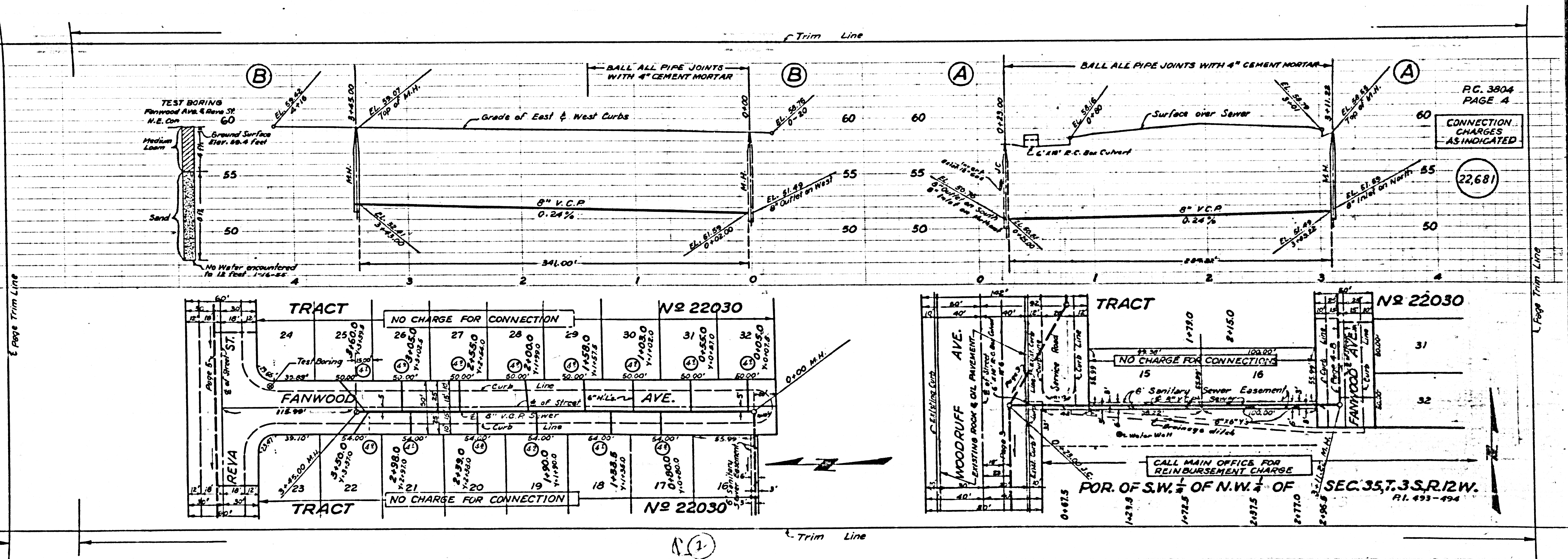
Page Trim Line

Page Trim Line



P.C. 3804
PAGE 5
CONNECTION
CHARGES
AS INDICATED

22,682



P.C. 3804
PAGE 4
CONNECTION
CHARGES
AS INDICATED

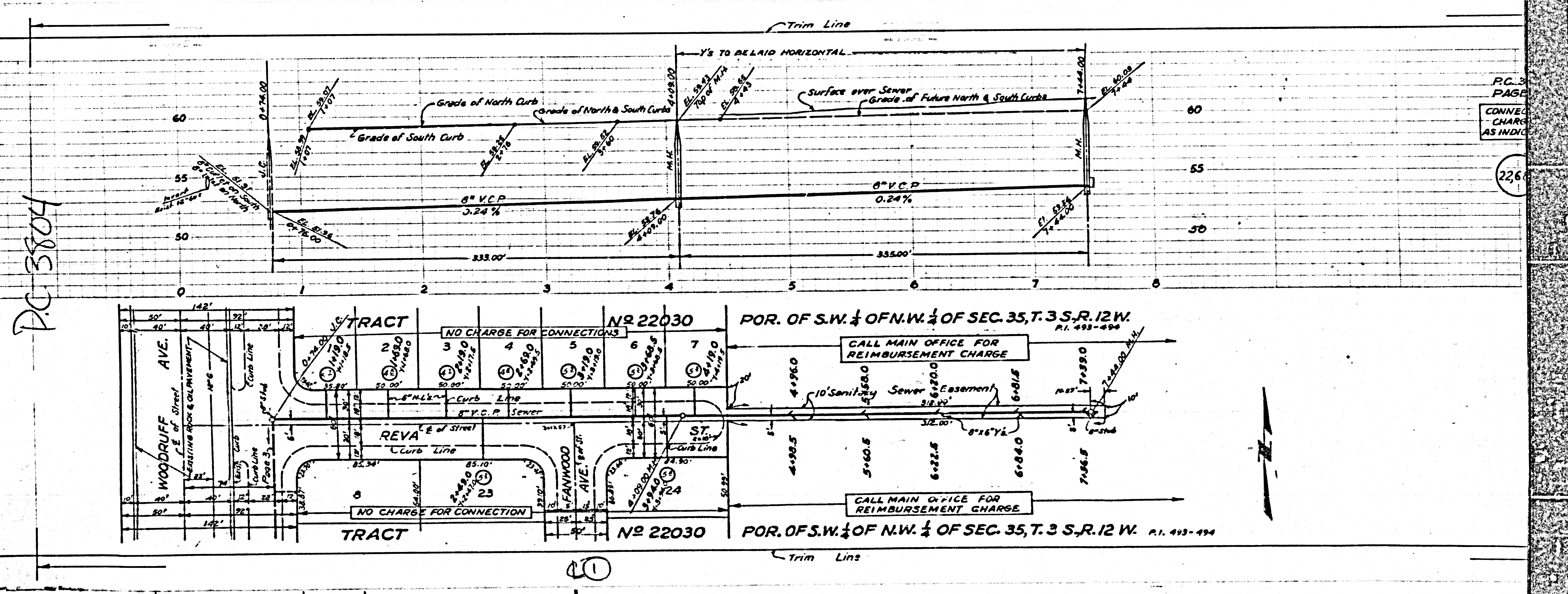
22,681

21

Page Trim Line

Page Trim Line

CALL MAIN OFFICE FOR REIMBURSEMENT CHARGE
FOR OF S.W. 1/4 OF N.W. 1/4 OF SEC. 35, T. 3 S., R. 12 W.
RI. 493-494



P.C. 3804

P.C. 3
PAGE
CONNEL
CHARGE
AS INDIC

226

1