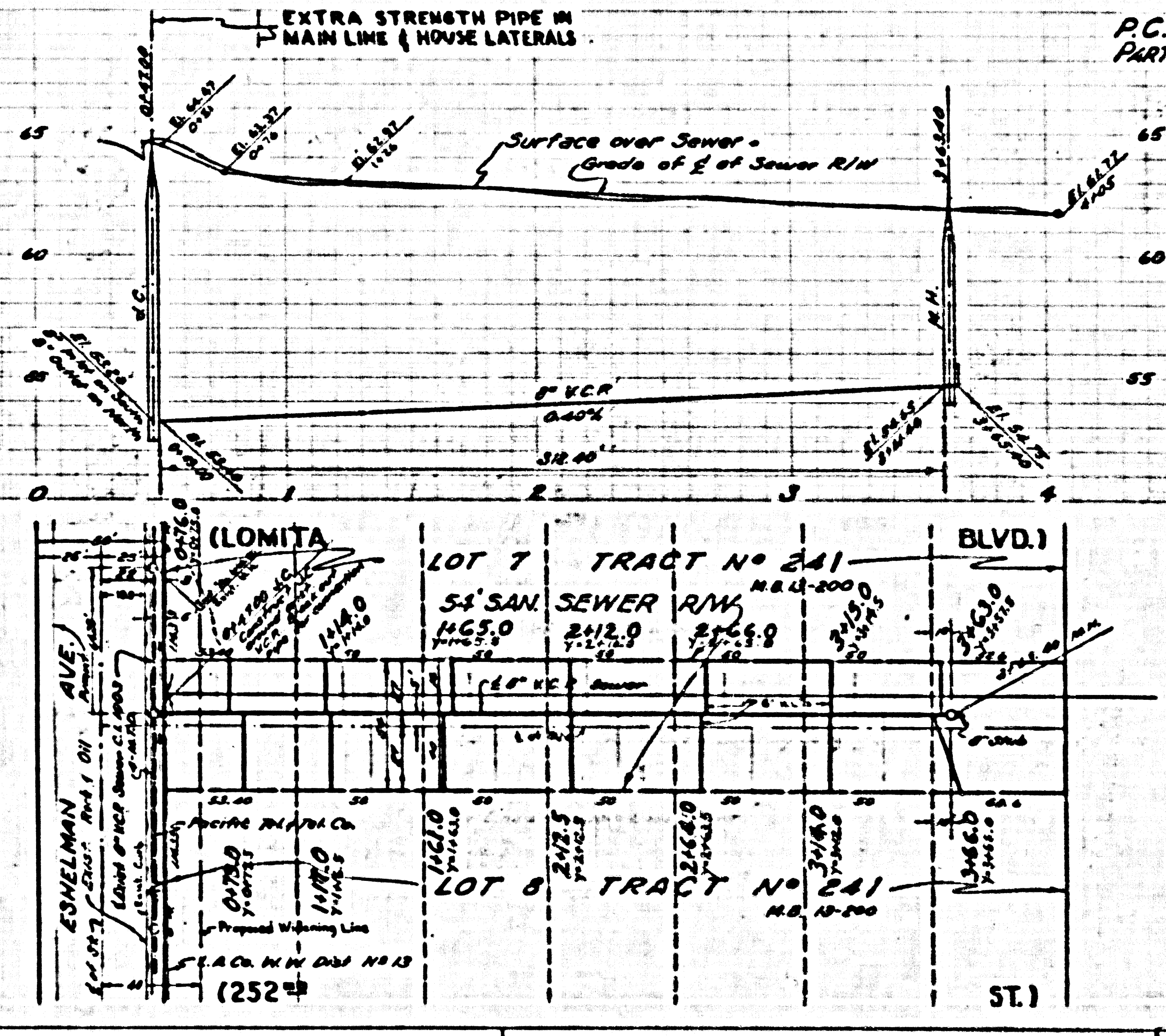
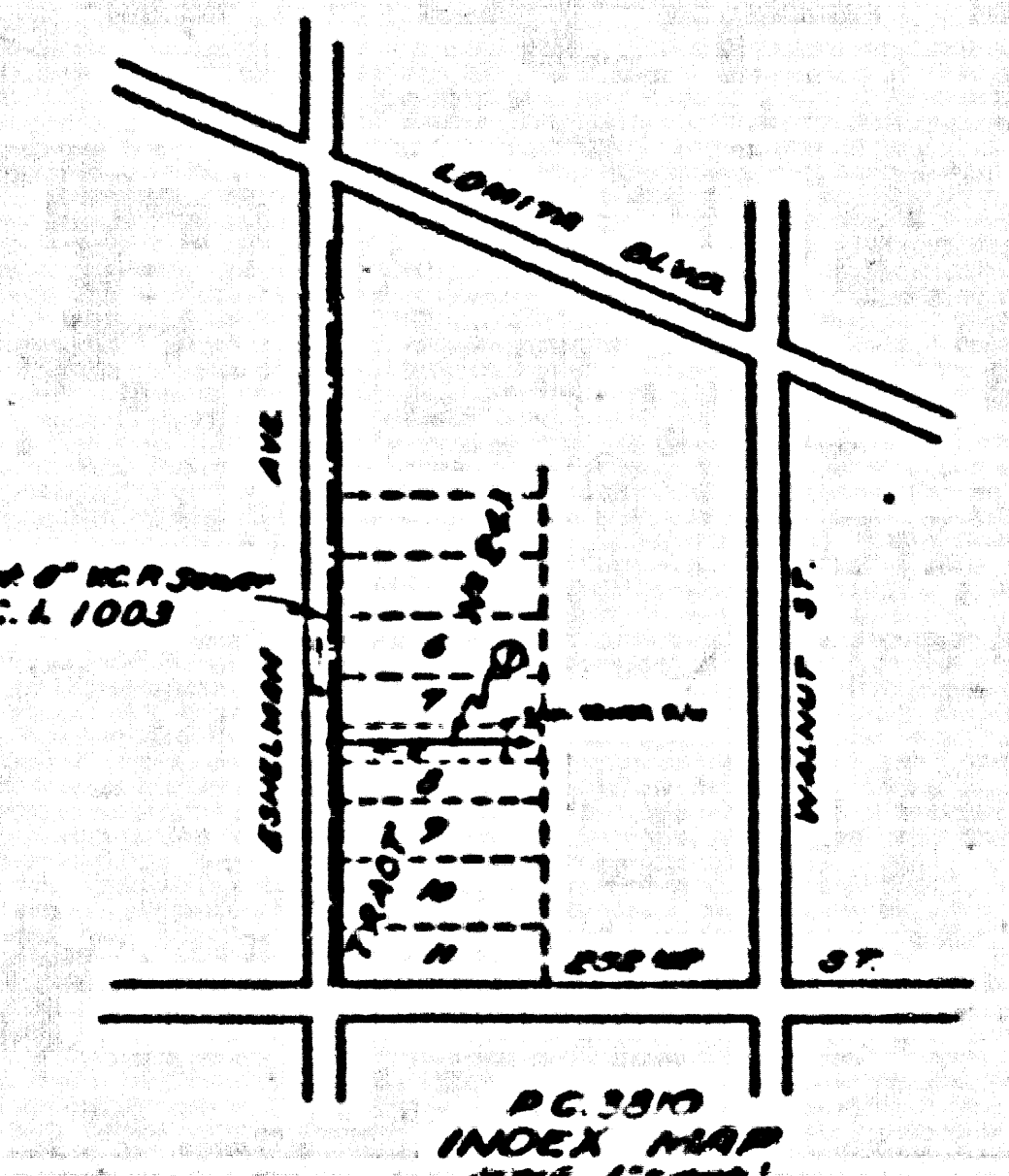


P.C. 3810



### LOMITA BLDG. DIST. NO. 7L

- NOTE:**
- Private stakes on the property lines or pressure lines produced at right angles in the sewer line at the center line of each manhole.
- No representative of the County Engineer will survey or layout any portion of the work.
- The owner or his authorized representative shall furnish the County Engineer with grade sheets and stations for all house laterals and T branches and shall provide stakes for them at their proper locations with stationing plainly marked. Any change in location shall be requested in writing by the owner or his representative.
- No alterations shall be made in these plans without the approval of the County Engineer.
1. Use standard manhole frames and covers, S-0-117
  2. Use standard strength pipe except as noted
  3. Use cement mortar for all vitrified clay pipe joints
  4. Resurface all trench within paved area to meet L.A. County Road Dist. or California State Highway Dist. requirements in accordance with permit
  5. Excavate four feet of sewer at points of interference with poles, S-0-119
  6. Manhole frames to be constructed with bases at R/W line 6 feet below grade.
  7. All structures shall be brick sewer structures, S-0-104
  8. For airtight leakage test, use Formula No. 1, Spill's, Sec. 51
  9. Manhole tops in unimproved Right-of-Way to be 6" above finish grade
  10. Franch engineer shall furnish trench depth at R/W line below elevation of 6' of R/W for each house lateral on the grade sheet.



**BENCH MARK**

BY 2510 - 2.0' in Elev. 101.10 on Point of 1919

Corner of Lot 7 & E of Edelman Ave 6' 6" of E of Edelman Ave 6' 6" of E of Lot 7

BLK 44 400 FT

**NO CHANGES - FOR CONNECTIONS**

*A. P. Collins* 1-1-56

PROFILE ALIGNMENT AND GRADE OF  
**SANITARY SEWERS**  
TO BE CONSTRUCTED IN  
**SANITARY SEWER RIGHT OF WAY NORTH OF 252nd STREET**

P.C. 3810  
PAGE 1

PRIVATE CONTRACT NO. 3810  
W. S. 28

1 SHEET  
DECEMBER, 1955

Scale: 1" = 40' HORIZ. 1" = 4' VERT.

DESIGNED BY THE OFFICE OF  
**SOUTH BAY ENGINEERING CO.**  
PASADENA, CALIFORNIA

*Raymond L. Langley*  
No. 6146 3191

FOR LEGEND SEE PLAN NO. 50-64

**NOTE:**

Grades to which this improvement is to be constructed are shown on plans and profiles. Grade points for top of curb, center line of street, or corner line of street are shown by circles on profiles. At all points between designated points the grade shall be established so as to conform to a straight line drawn between said designated points.

Elevations are in feet above U.S.C. & G.S. sea level datum of 1929.

This drawing and the data hereon are hereby made a part of the specifications.

Work shall be constructed according to specifications on file in the office of the County Engineer and shall be constructed only in the presence of the County Engineer.

Before work can be started, the contractor shall obtain a permit to excavate in County street from the L.A. County Road Dept., 108 W. 2nd St. and make a deposit with the County Engineer, Room 234, 233 South Broadway, sufficient to cover the cost of construction inspection and related items.

Approval of this plan by the County of Los Angeles does not constitute a representation as to the accuracy of the location of or the existence or non-existence of any underground utility, pipe, or structure within the limits of this project. The contractor shall be responsible to all whom it may concern to locate and mark all such utilities, pipes, or structures before the start of the work.

If work is to be done on a State Highway, a permit shall be obtained from the State of California, Division of Highways, 120 South Spring Street.

**COUNTY OF LOS ANGELES, CALIFORNIA**  
Approved, John A. Lambie, County Engineer

Approved, *A. P. Collins*  
City Engineer

Checked by *A. V. Oude* 4-23-56  
Office of County Engineer, Box 6, S. E. 1406

R/W North of 252nd St.

P.C. 3810