

Trim Line

BENCHMARK: 56.41. EL. 356.643
4.7' East of Curb Return, South
East Corner, 211th St & Normandie

PUEENTE Bldg. Dist. No. 2

- NOTE:
1. Provide stakes on the property lines or property lines produced at right angles to the sewer line at the center line of each manhole.
 2. No representative of the County Engineer will survey or layout any portion of the work. The owner or his authorized representative shall furnish the County Engineer with grade sheets and stations for all house laterals and Y branches and shall provide stakes for them at their proper locations with stationing plainly marked. Any change in location shall be requested in writing by the owner or his representative.
 3. No revisions shall be made in these plans without the approval of the County Engineer.
 4. Use standard manhole frames and covers, S-a-117.
 5. Use standard strength pipe.
 6. Use cement mortar for all vitrified clay pipe joints.
 7. Resurface all trench within paved areas to meet L.A. County Road Dept. or Calif. State Highway Dept. requirements in accordance with permit.
 8. Encase four feet of sewer at points of interference with poles, S-a-119.
 9. House laterals to be constructed with inverts at property line 6 feet below curb grade except as noted.
 10. All structures shall be brick sewer structures, S-a-104.
 11. For allowable leakage test, see Formula No. 1, Spec's., Sec. 51.
 12. Manhole tops in unimproved Rights-of-Way to be 6" above finish grade.

PROFILE, ALIGNMENT AND GRADE OF
SANITARY SEWERS
TO BE CONSTRUCTED IN
TRACT NO 19903
PRIVATE CONTRACT NO. 3812
W. S. 38
JANUARY 1936
2 SHEETS

Scale: VERT. 1" = 4'
HORIZ. 1" = 40'

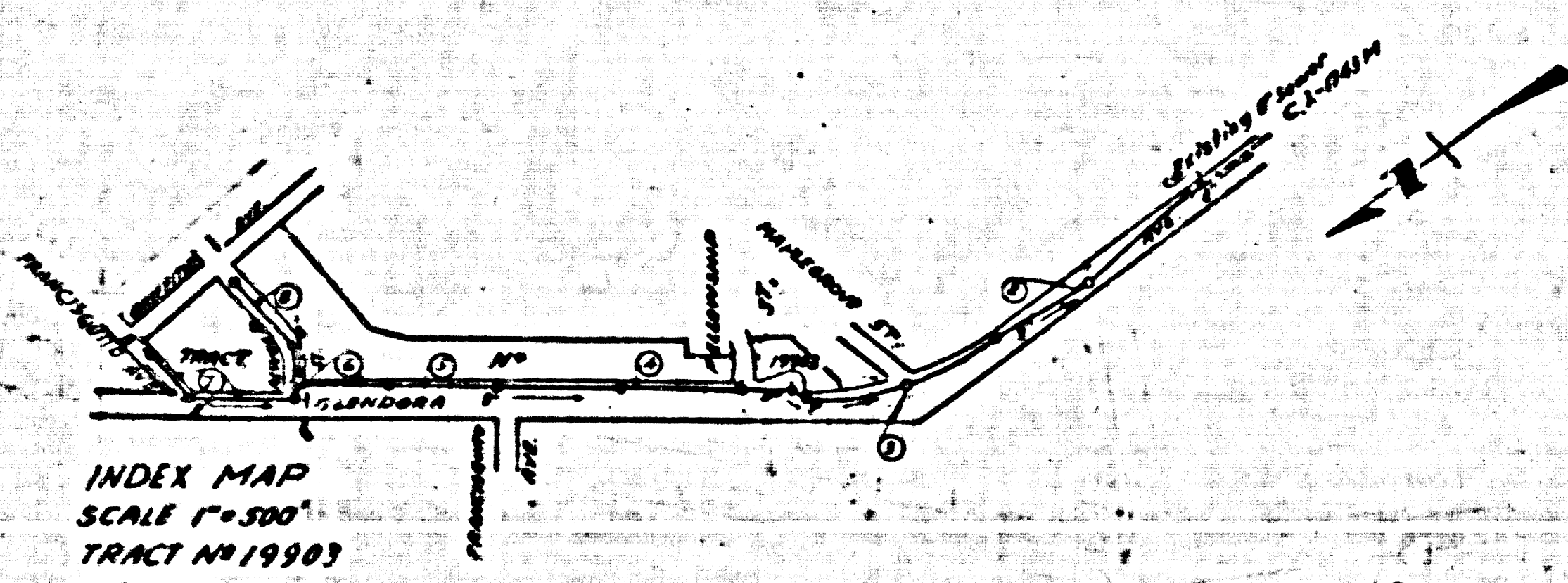
PREPARED BY THE OFFICE OF
KARL TUTTLE ENGINEERING CO.
John A. Tuttle
FOR LEGEND SEE PLAN NO. S-a-64

22972

TRACT NO 19903

SHEET NO	PAGES
1	1-4
2	5-8

COLLECT CHARGES
AS INDICATED
J. W. McLean 2-23-36



NOTE:
Grades to which this improvement is to be constructed are shown on plans and profiles. Grade points for top of curbs, center line of streets, or center line of alleys are shown by circles on profiles. At all points between designated points the grade shall be established so as to conform to a straight line drawn between said designated points. Elevations are in feet above U.S.C. & G.S. Sea Level Datum of 1929. This drawing and the data hereon are a hereby made a part of the specifications. Work shall be constructed according to specifications on file in the office of the County Engineer and shall be prosecuted only in the presence of the County Engineer. Before work can be started, the contractor must obtain a permit to excavate in County streets from the L.A. County Road Dept., 108 W. 2nd St., and make a deposit with the County Engineer, Room 254, 253 St. Broadway, sufficient to cover the cost of construction inspection and record plans. Approval of this plan by the County of Los Angeles does not constitute a representation as to the accuracy of the location of or the existence or non-existence of any underground utility, pipe, or structure within the limits of this project. This note applies to all sheets. If work is to be done in a State Highway, a permit must be obtained from the State of California, Division of Highways, 120 South Spring Street.

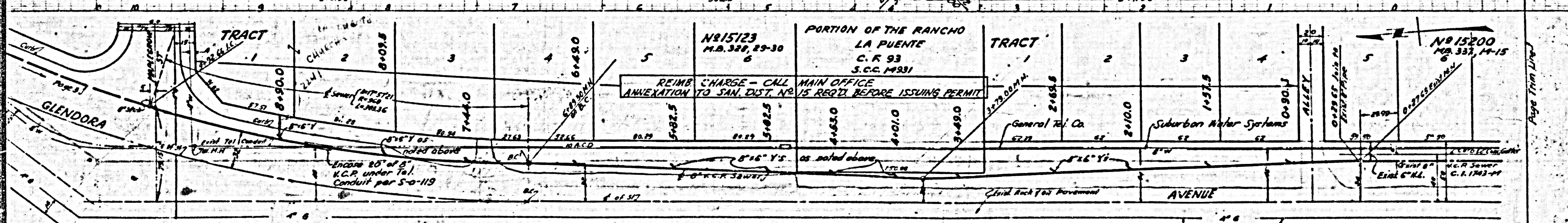
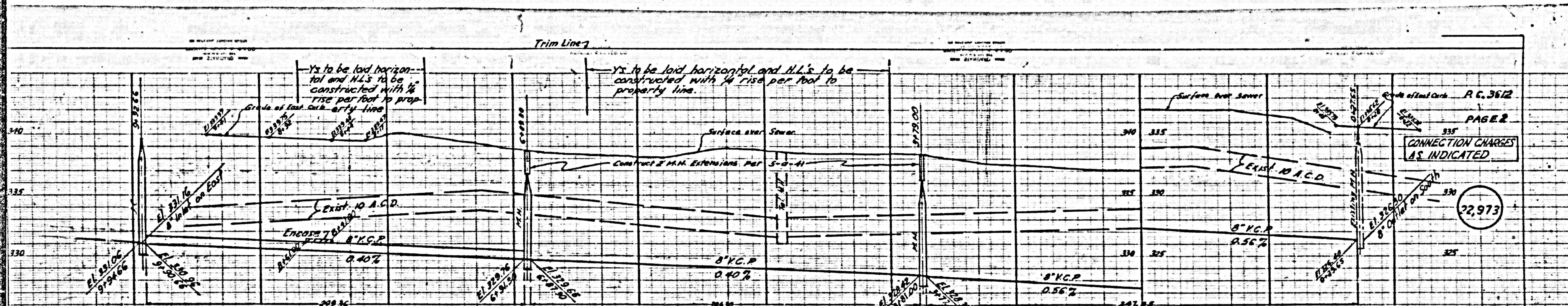
COUNTY OF LOS ANGELES, CALIFORNIA
Approved, John A. Lamb County Engineer Approved, A. M. Bawn
Checked by: J. P. Collins
Checked by: R. E. Nichols

Checked 6-29-36 McLean

Trim Line

P.C. 3812

SIBER



NOTE: Contractor Shall Notify The General Telephone Company Before Doing Work In This Area.

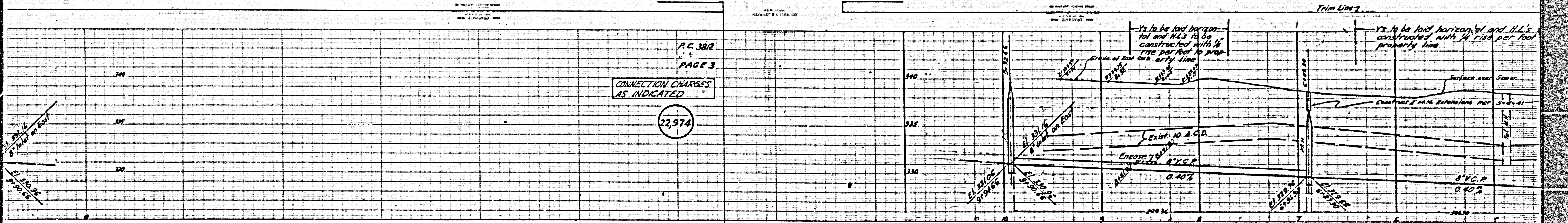
ED 6-1251

PAGE 2

CONNECTION CHARGES AS INDICATED.

22,973

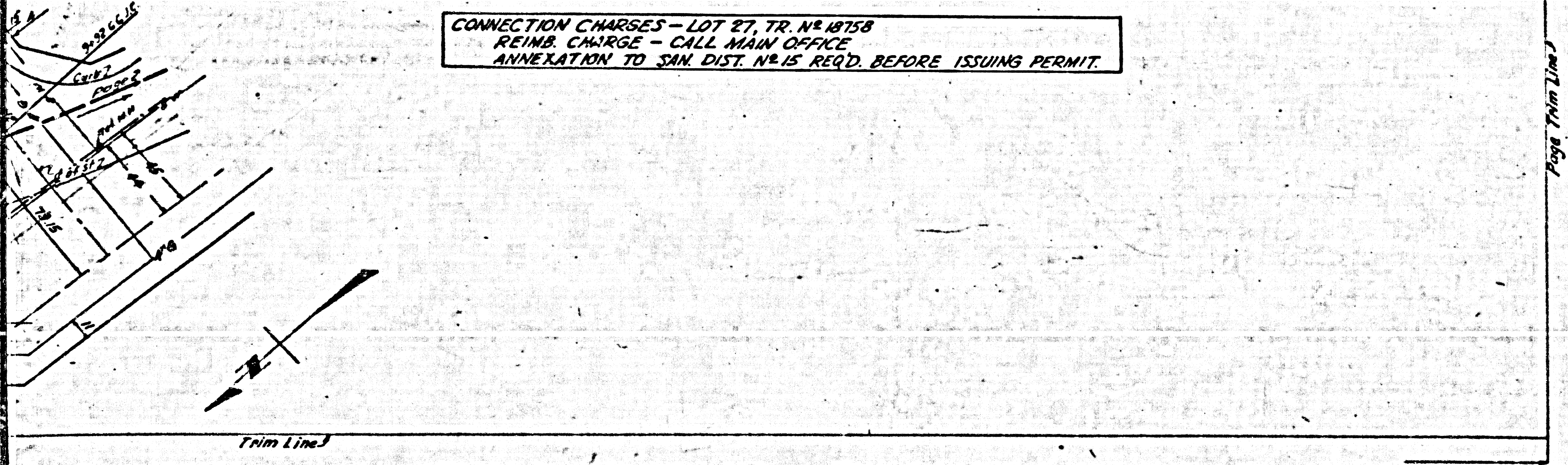
INDEX SCALE 1\"/>



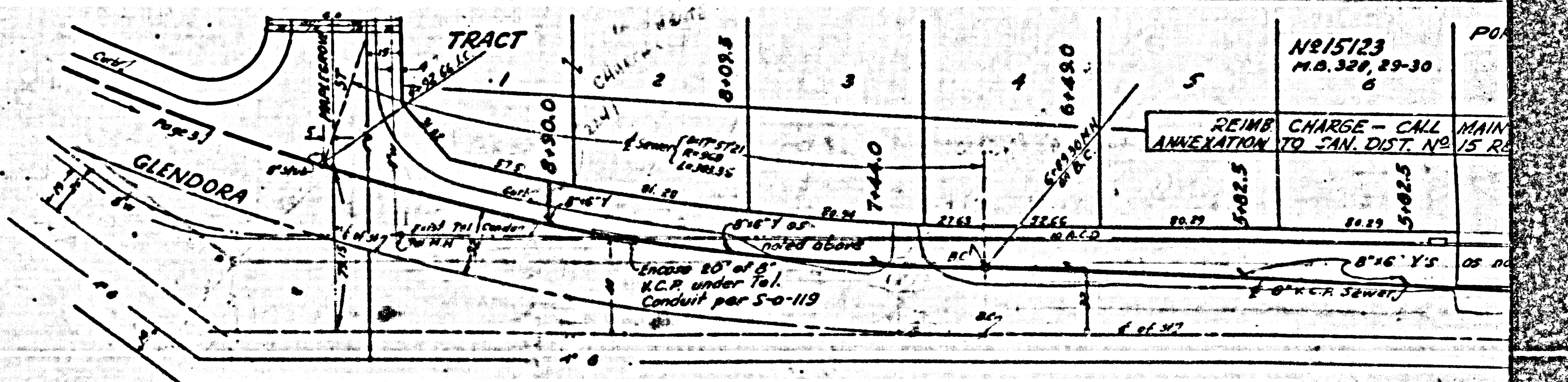
P.C. 3812
PAGE 3

CONNECTION CHARGES
AS INDICATED

22,974



CONNECTION CHARGES - LOT 27, TR. NO. 18758
REIMB. CHARGE - CALL MAIN OFFICE
ANNEXATION TO SAN. DIST. NO. 15 IS REQ'D. BEFORE ISSUING PERMIT.

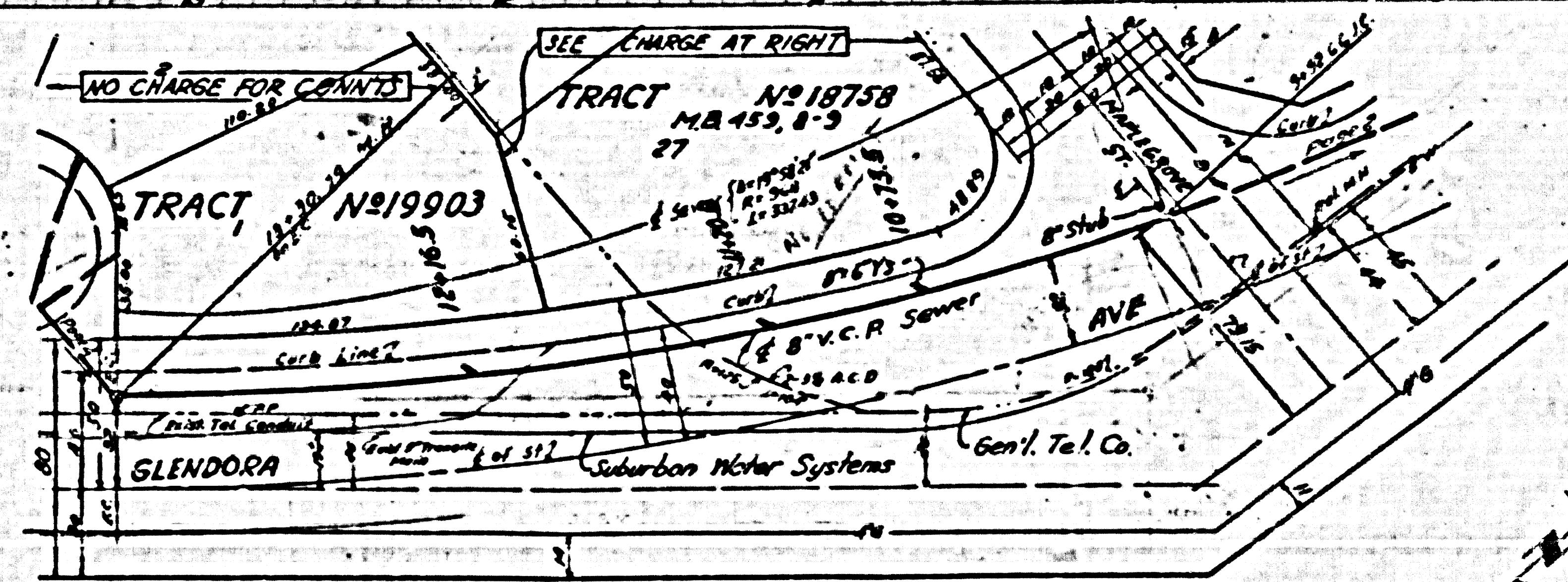
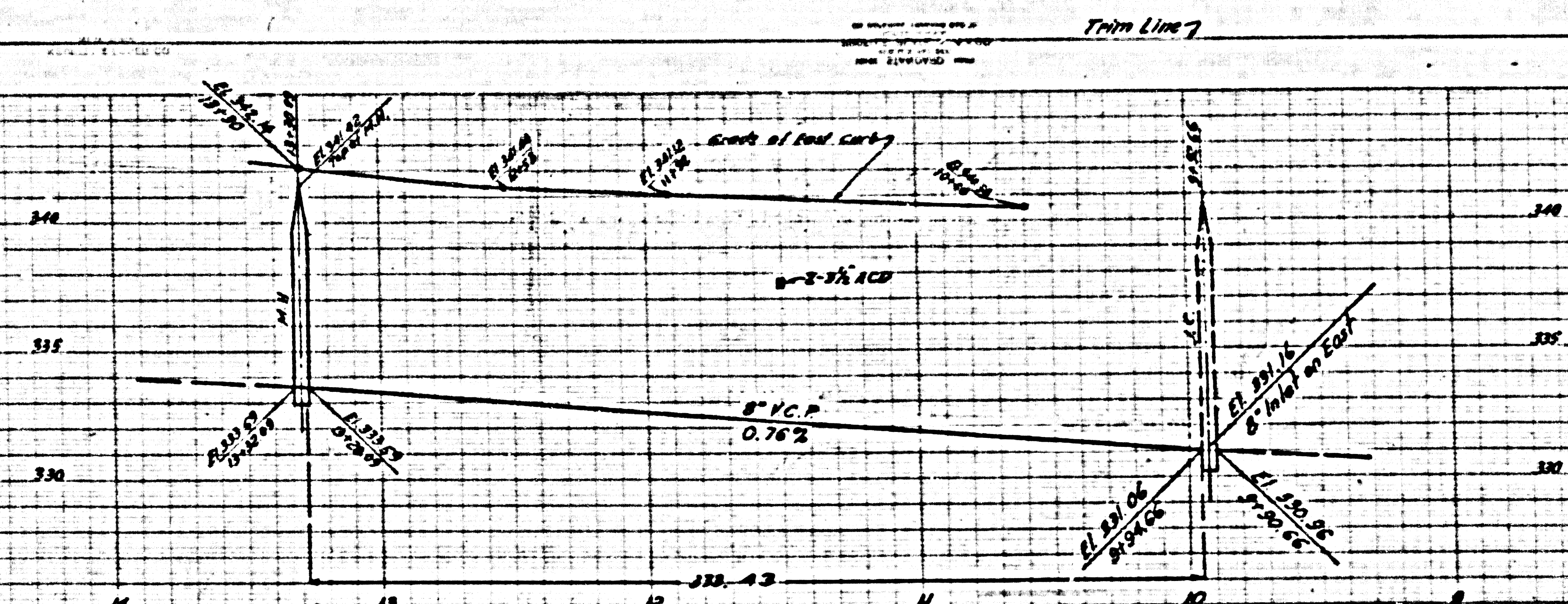


REIMB. CHARGE - CALL MAIN
ANNEXATION TO SAN. DIST. NO. 15 IS REQ'D.

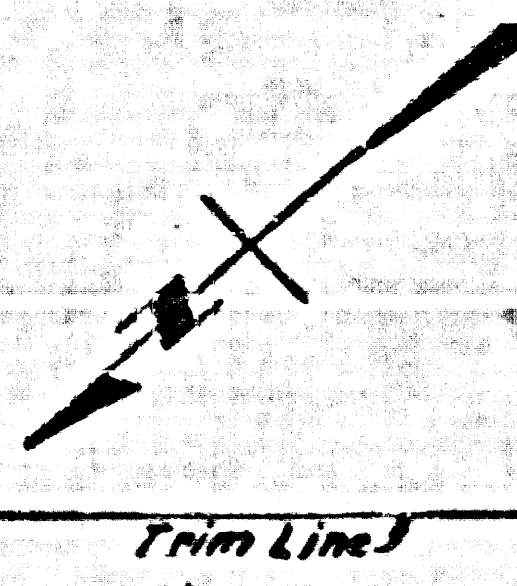
ED 6-1251

NOTE: Contractor Shall
The General Telephone Com

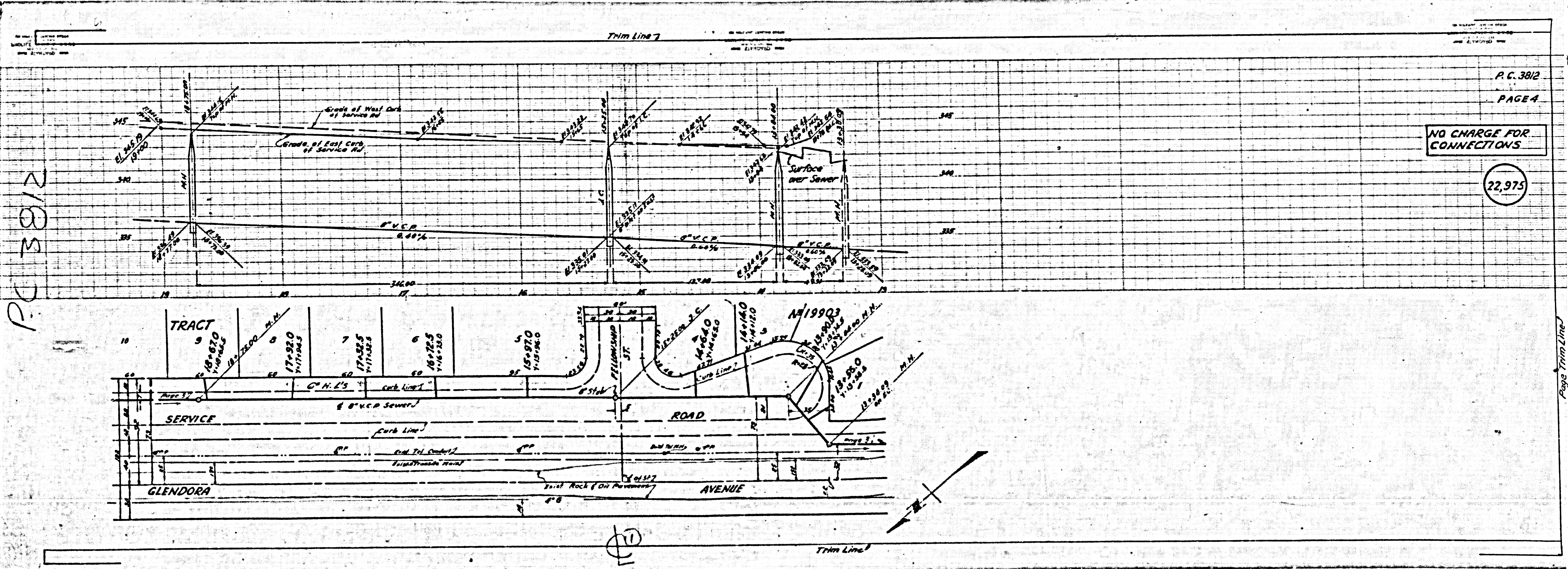
P.C. 3812
 PAGE 4
 NO CHARGE FOR CONNECTIONS
 22,975



CONNECTION CHARGES - LOT 27, TR. NO 18758
 REIMB. CHARGE - CALL MAIN OFFICE
 ANNEXATION TO SAN. DIST. NO 15 REQ'D. BEFORE ISSUING PERMIT.



②



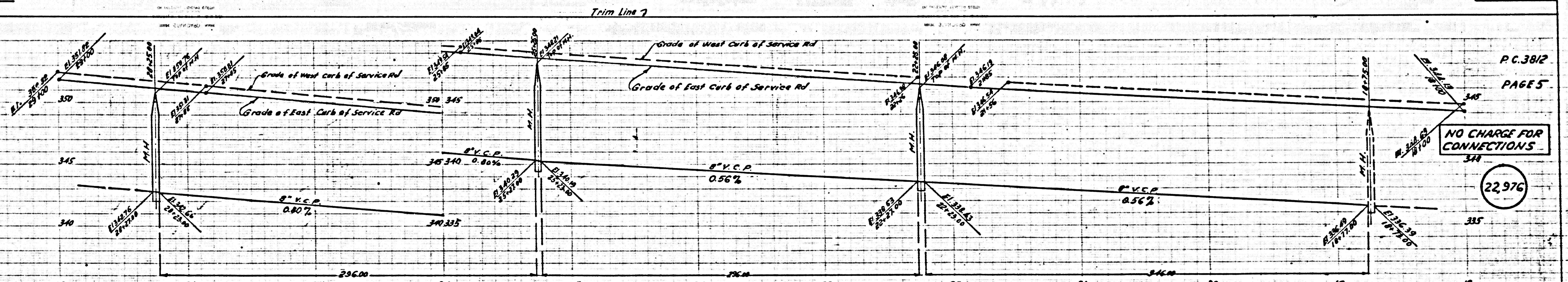
PC 3812

A.C. 3812
PAGE 4

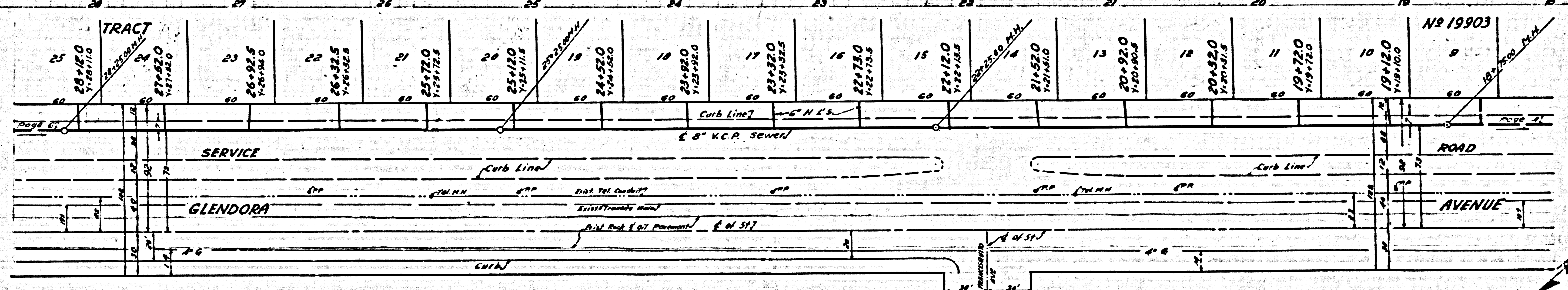
NO CHARGE FOR CONNECTIONS

22,975

Page Third Line



P.C. 3812
PAGE 5
NO CHARGE FOR CONNECTIONS
22,976



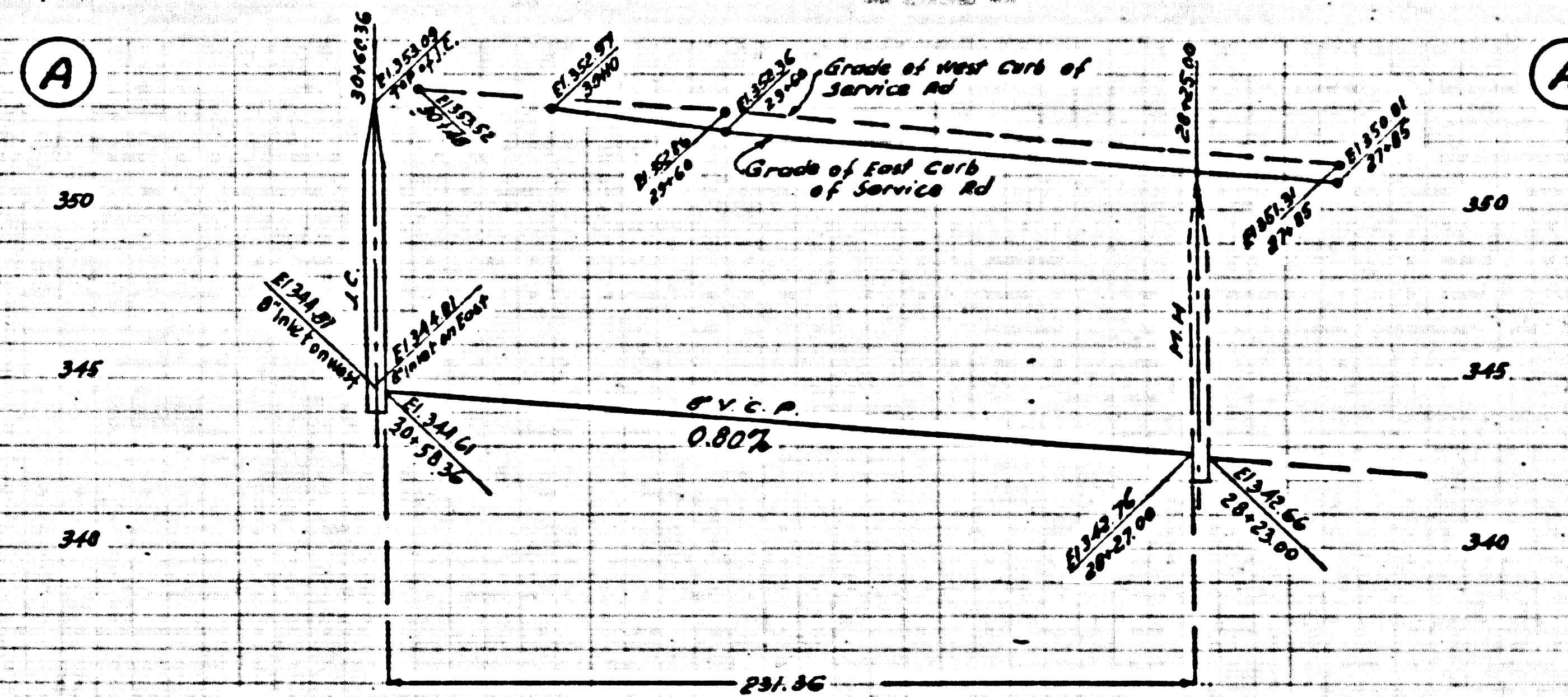
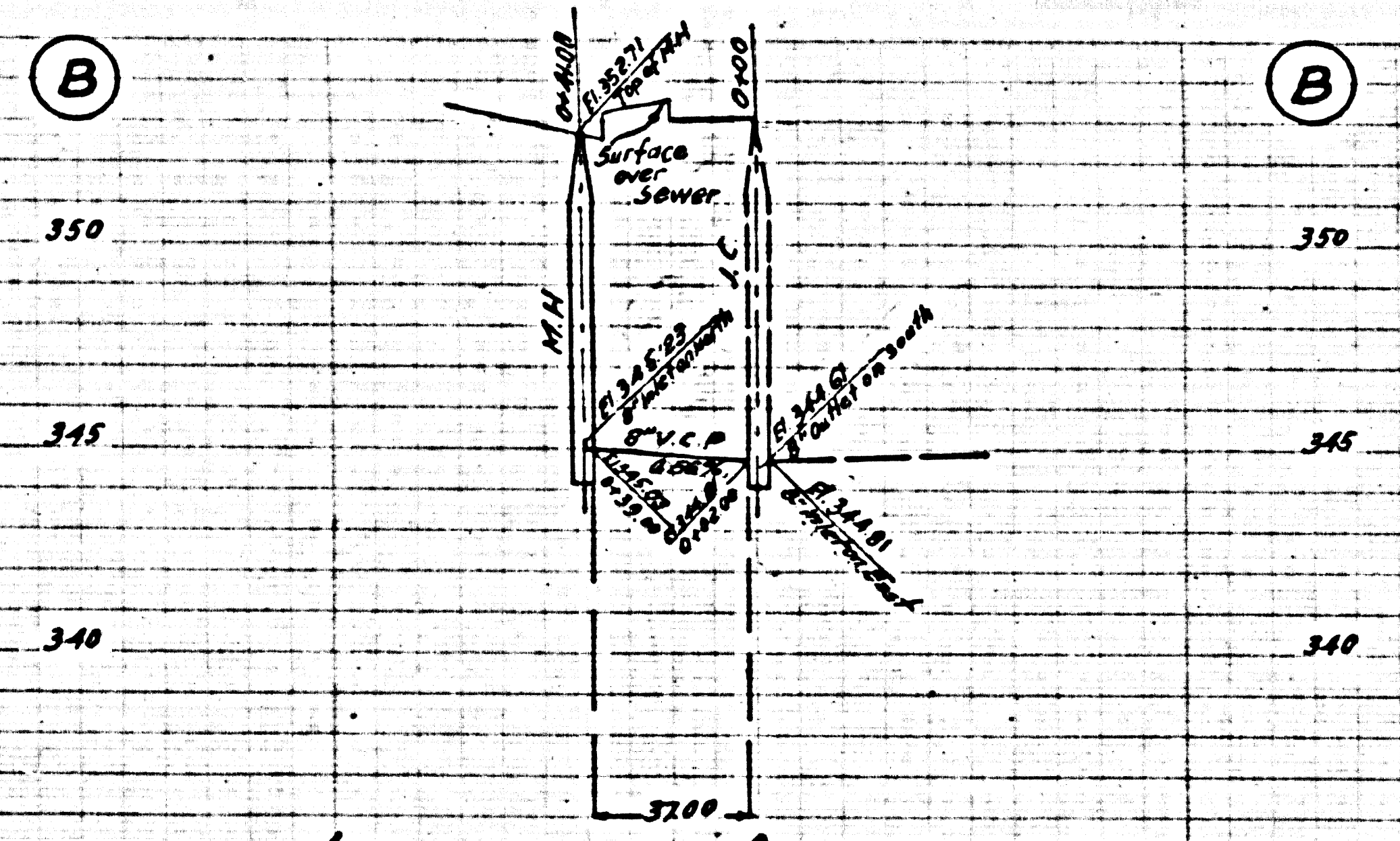
25	24	23	22	21	20	19	18	17	16	15	14	13	12	11	10	9
28+120 1-28+110	27+120 1-27+110	26+120 1-26+110	25+120 1-25+110	24+120 1-24+110	23+120 1-23+110	22+120 1-22+110	21+120 1-21+110	20+120 1-20+110	19+120 1-19+110	18+120 1-18+110	17+120 1-17+110	16+120 1-16+110	15+120 1-15+110	14+120 1-14+110	13+120 1-13+110	12+120 1-12+110

TRACT N^o 19903
P.C. 3812
Page (Trim Line)

2

Trim Line

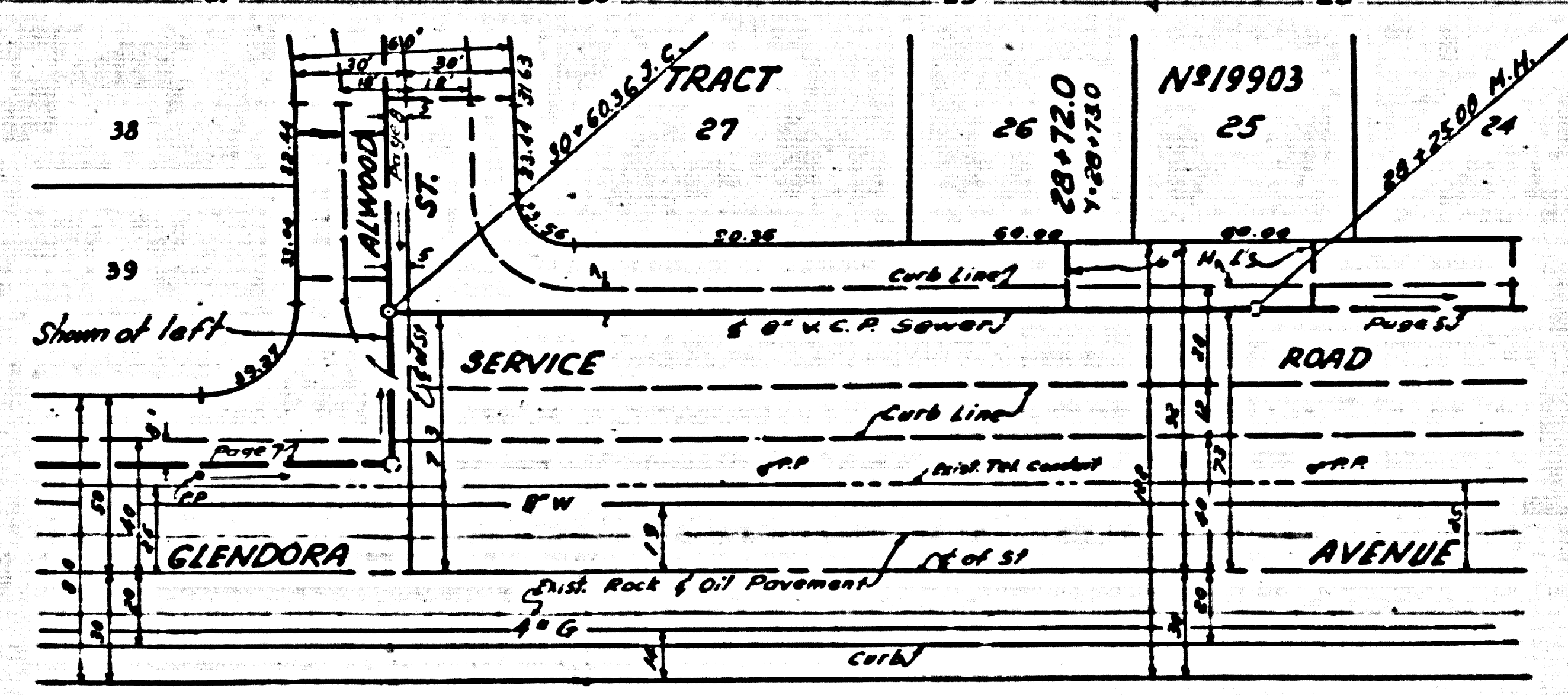
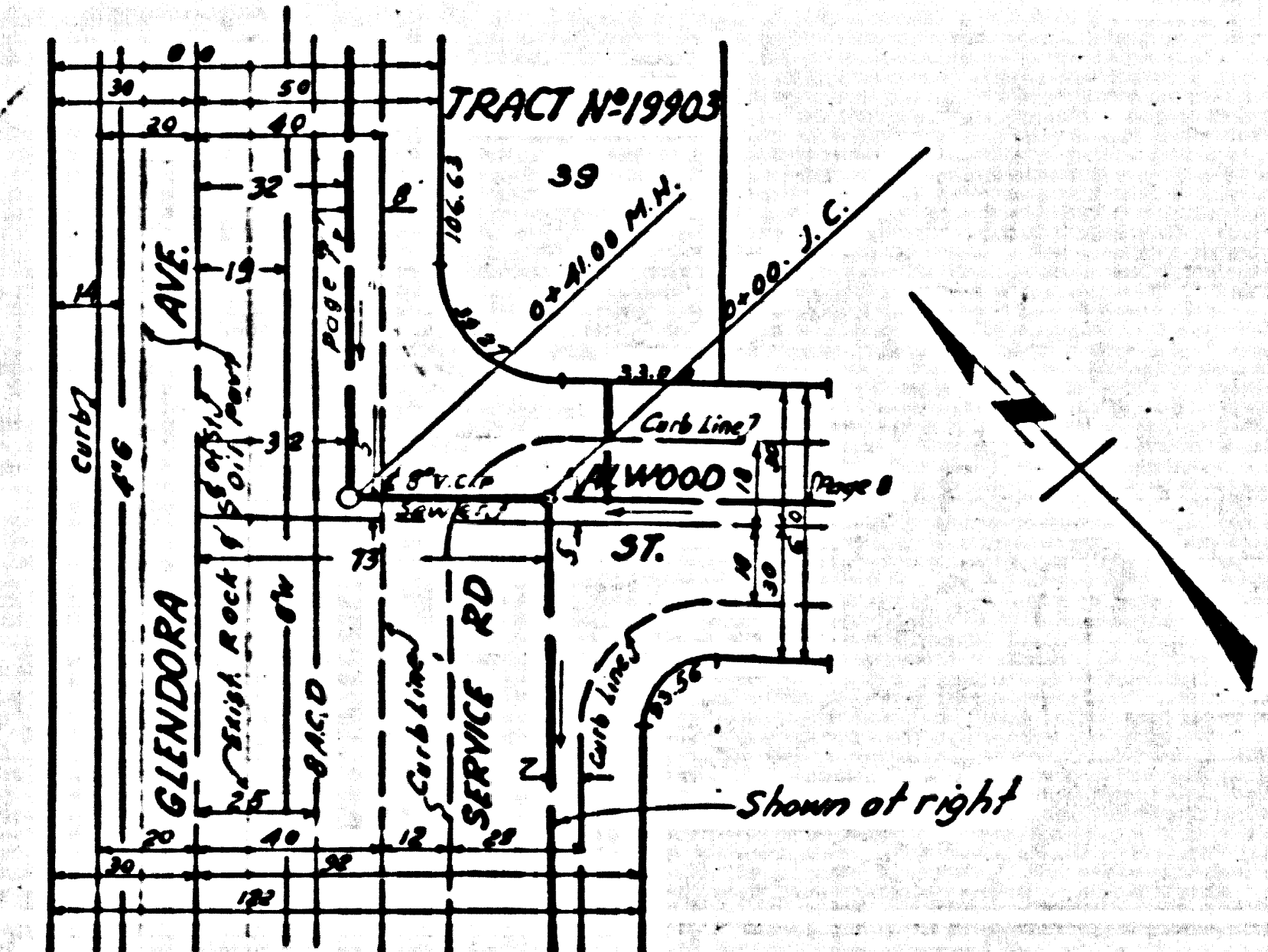
Trim Line 7



P.C. 3912
PAGE 6

NO CHARGE FOR CONNECTIONS

22,977

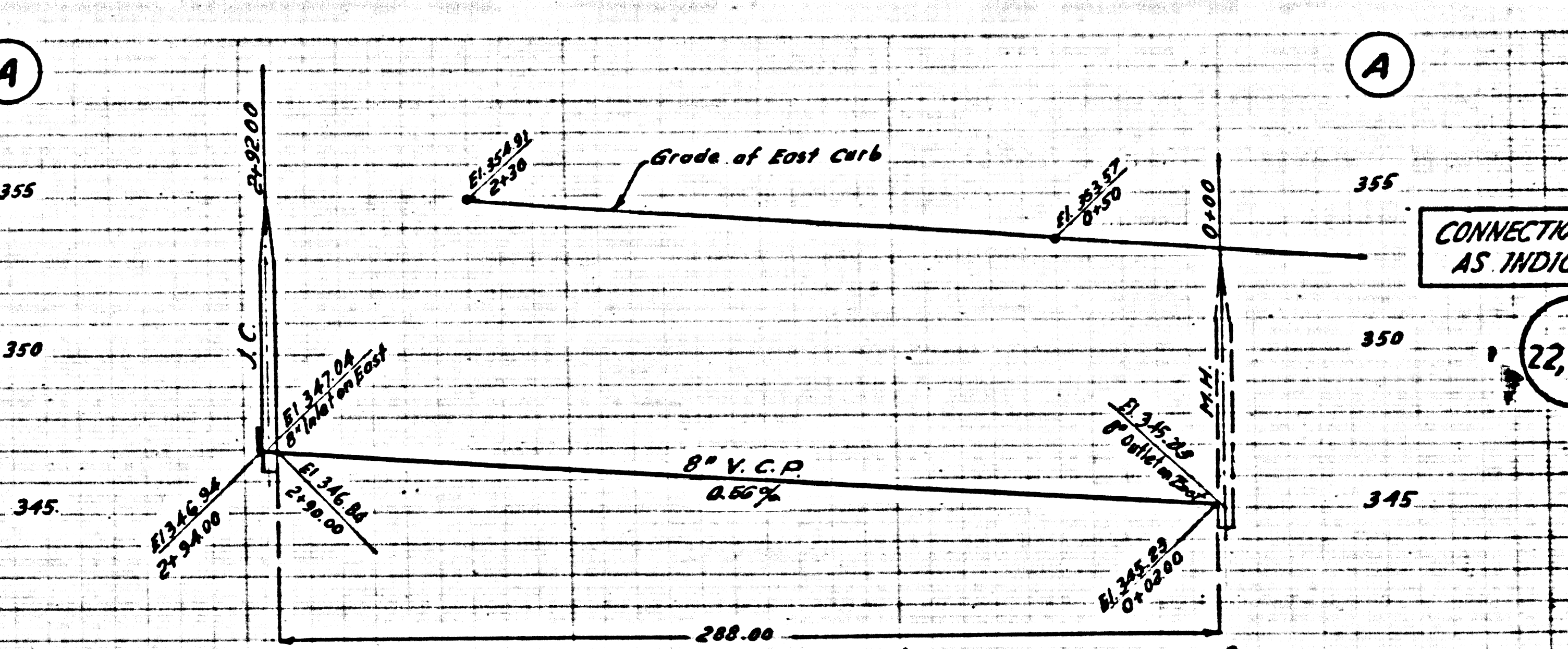
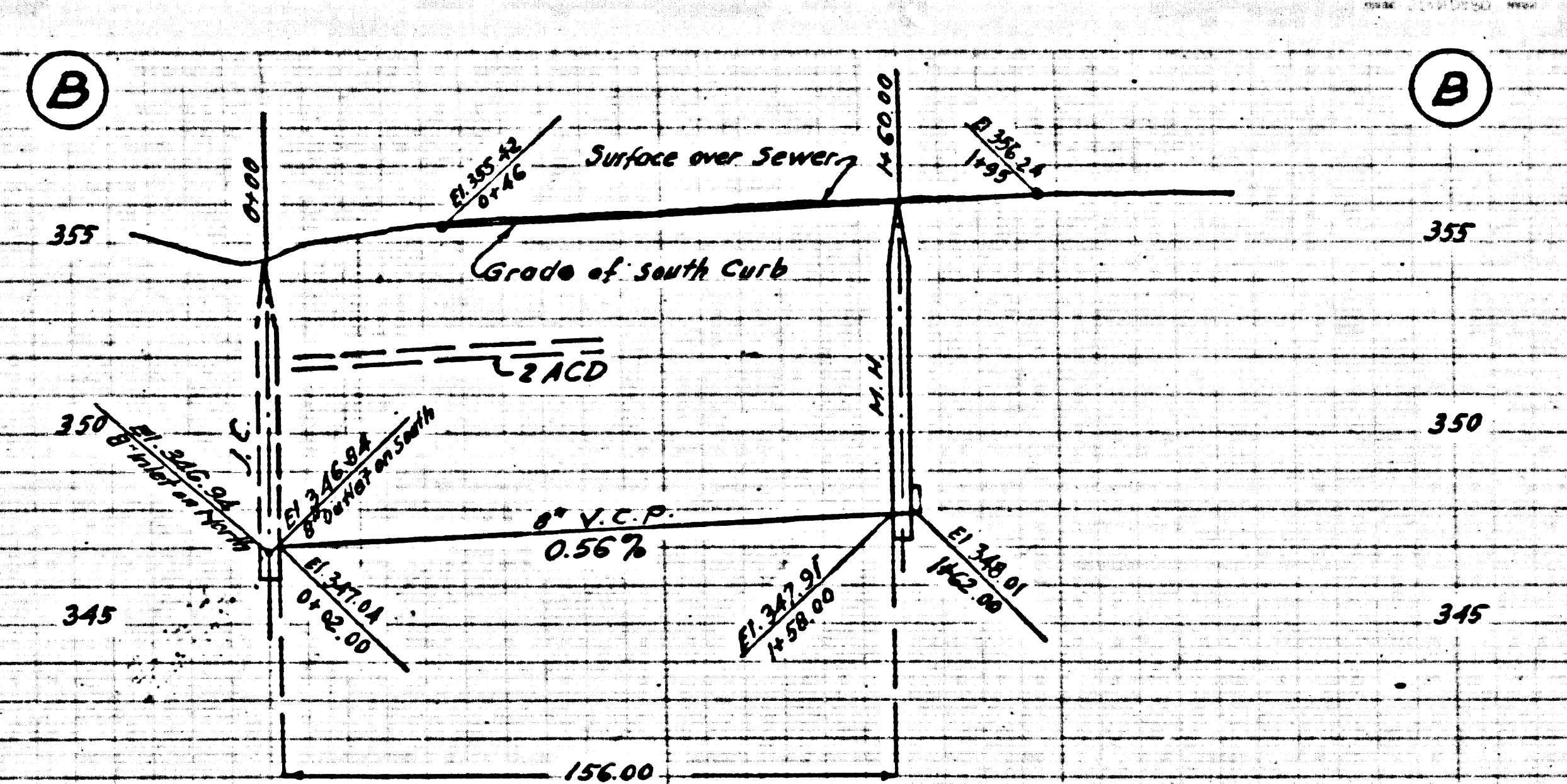


Trim Line 7

42

Page Trim Line 7

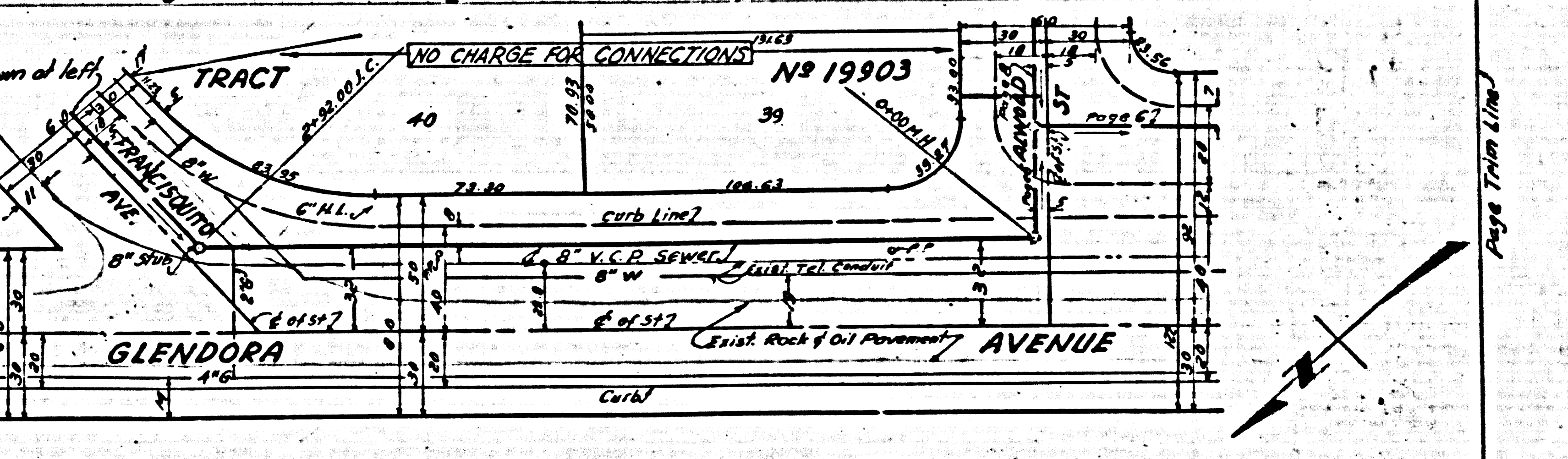
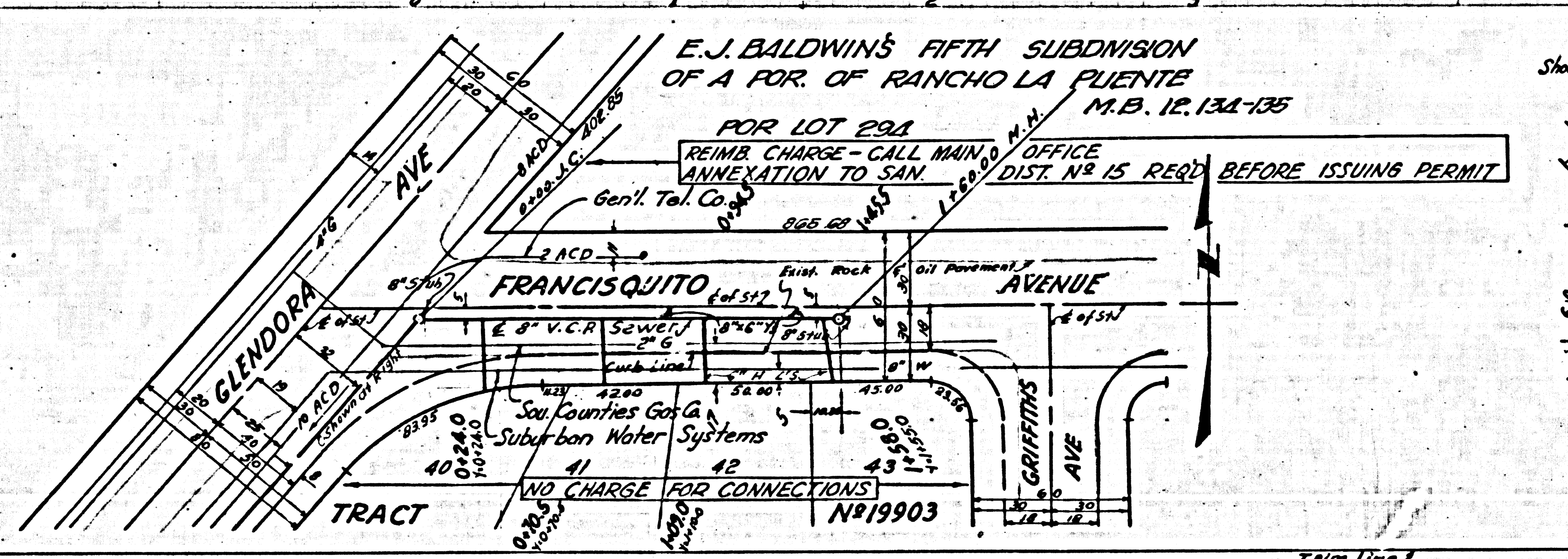
Trim Line



R.C. 3812
PAGE 7

CONNECTION CHARGES
AS INDICATED

22,978



Page Trim Line

Trim Line

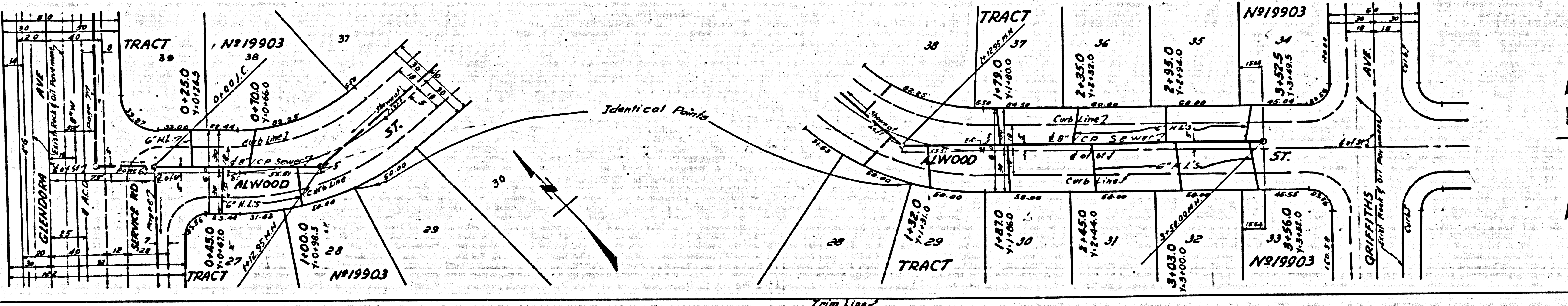
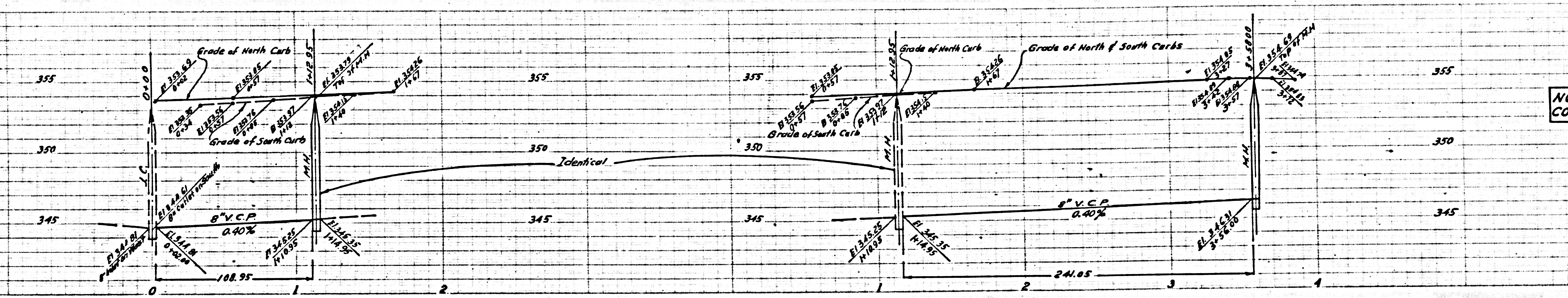
±

Trim Line 1

R.C. 3812
PAGE 8

NO CHARGE FOR CONNECTIONS

22,979



Trim Line 2

Page Trim Line