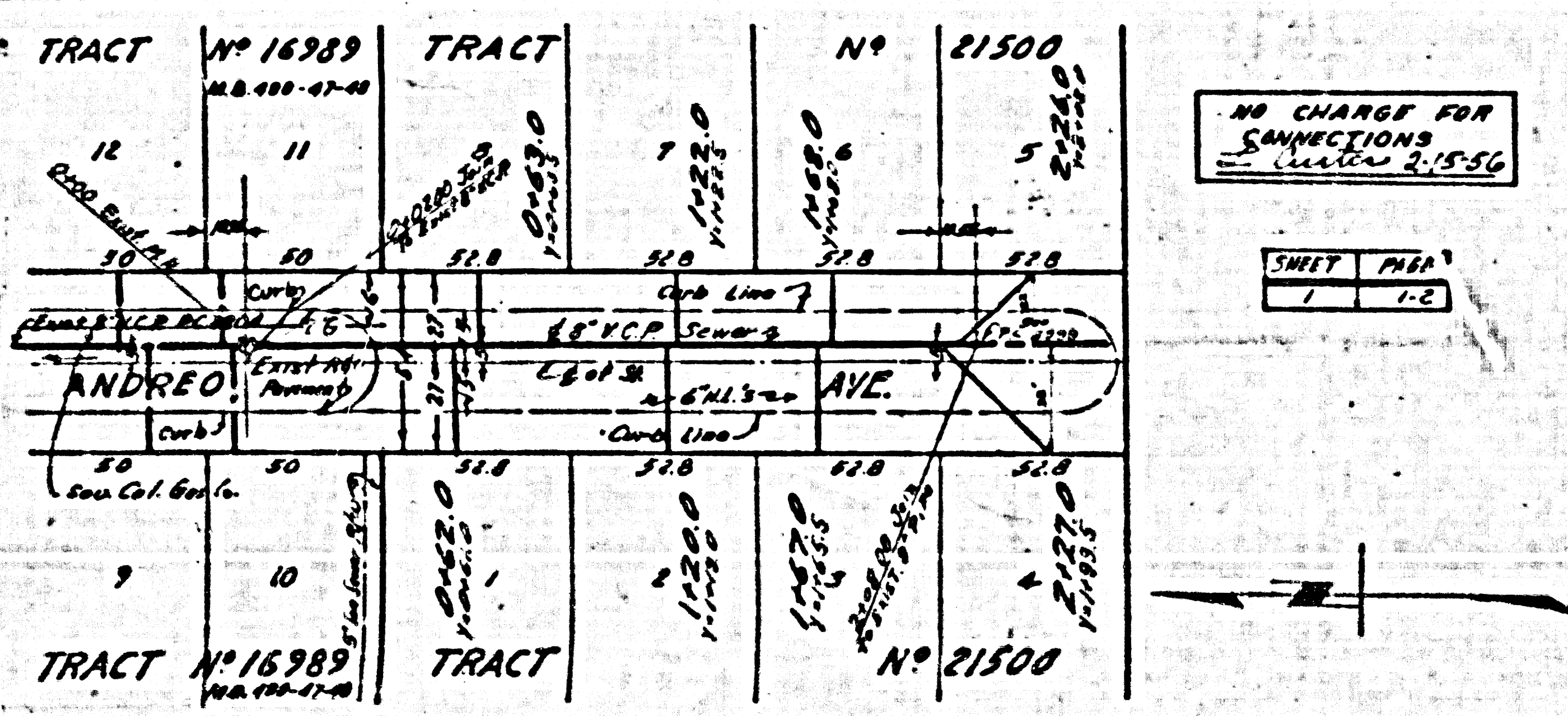
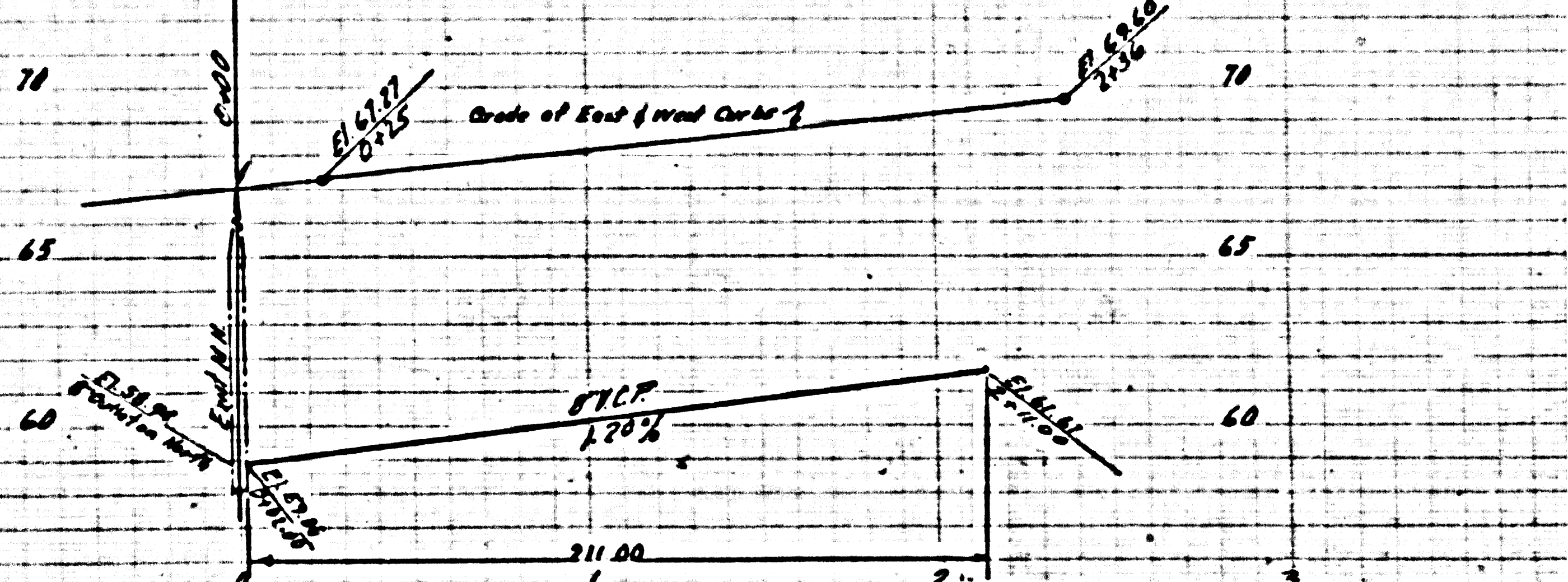


Part of Page 1  
PC. 3813



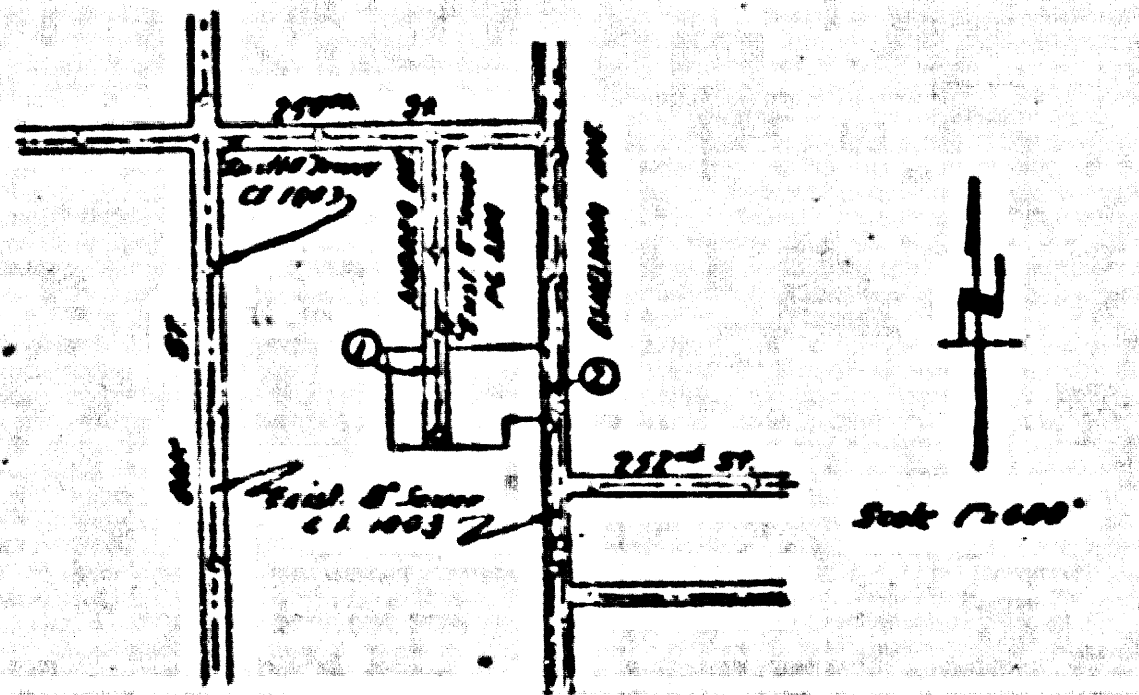
LOMITA BLDG. DIST. N<sup>o</sup> 72

- NOTE:  
Provide stakes on the property lines or property lines produced at right angles to the sewer line at the center line of each manhole.  
No representative of the County Engineer will survey or layout any portion of the work.  
The owner or his authorized representative shall furnish the County Engineer with grade sheets and stations for all house laterals and T branches and shall provide stakes for them at their proper locations with stationing plainly marked. Any change in location shall be requested in writing by the owner or his representative.  
No revisions shall be made in these plans without the approval of the County Engineer.
1. Use standard manhole frames and covers, S-a-117.
  2. Use standard strength pipe except as noted.
  3. Use cement mortar for all vitrified clay pipe joints.
  4. Resurface all trench within paved area to meet L.A. County Road Dept. or Calif. State Highway Dept. requirements in accordance with permit.
  5. Encase four feet of sewer at points of interference with poles, S-a-119.
  6. House laterals to be constructed with inverts at property line... feet below curb grade except as noted.
  7. All structures shall be brick sewer structures, S-a-104.
  8. Manhole tops in unimproved Right-Of-Way to be 6" above finish grade.
  9. For allowable leakage test, use Formula No. 1, Spec's, Sec. 51.

D.M. C.S. 21-64, USC 485 5-20-1930 U.S.P.M.  
Point: East N<sup>o</sup> 1 of Eschelman Ave. NW of 1/2 of Eschelman Ave. on West side of 1/2 of East of 2 Street level. Sub. Station 100 to 11 feet of wall. 2 1/2' x 4' 3/4" C.C. 1' 8" above curb. 10' 0" deep. 4' 0" diameter. S 25-1932 25-1932-41-1932 Adj. elev. 116.700

NO CHARGE FOR CONNECTIONS  
SECTION 3, 1956

SWET MAP  
1 1-2



INDEX MAP  
TRACT N<sup>o</sup> 21500  
PC. 3813

dated 6-7-56 W. L. ...

PROFILE, ALIGNMENT AND GRADE OF  
SANITARY SEWERS  
TO BE CONSTRUCTED IN  
TRACT N<sup>o</sup> 21500

PC 3813  
Page 1

22,792

PRIVATE CONTRACT NO. 3813  
W. S. 28

1 SHEET  
October 1955  
Scale: VERT. 1" = 10'  
HORIZ. 1" = 100'

PREPARED BY THE OFFICE OF  
ANCHORAGE ENGINEERING CO.  
San Francisco, Cal.  
FOR LEGEND SEE PLAN NO. S-a-64

NOTE:  
Grades to which this improvement is to be constructed are shown on plans and profiles.  
Grade points for top of curbs, center line of streets, or center line of alleys are shown by circles on profiles. At all points between designated points the grade shall be established so as to conform to a straight line drawn between said designated points.  
Elevations are in feet above U.S.C. & G.S. sea level datum of 1929.  
This drawing and the data hereon are hereby made a part of the specifications.  
Work shall be constructed according to specifications on file in the office of the County Engineer and shall be prosecuted only in the presence of the County Engineer.  
Before work can be started, the contractor must obtain a permit to excavate in County streets from the L.A. County Road Dept., 108 W. 2nd St. and make a deposit with the County Engineer, 214 1/2 S. Broadway, sufficient to cover the cost of construction, inspection and record plans.  
Approval of this plan by the County of Los Angeles does not constitute a representation as to the accuracy of the location of or the existence or non-existence of any underground utility, pipe, or structure within the limits of this project. This note applies to all sheets.  
If work is to be done in a State Highway, a permit must be obtained from the State of California, Division of Highways, 120 South Spring Street.

COUNTY OF LOS ANGELES, CALIFORNIA

Approved, John A. Lambie, County Eng.  
Approved, A. M. Rowen  
A. P. Collins  
Sanitary Engineer  
Checked by: [Signature]  
Office of County Engineer, Dep. C. E. No. 7960.

PC. 3813  
TRACT N<sup>o</sup> 21500

TRACT N<sup>o</sup> 21500  
151823

PC 3813

