

A PC. 3819
 Page 2
 NO CHARGE FOR CONNECTIONS
 23,473
 25
 28

BM: 5X 3107 EL 28.474
 Spall in conc. parvt. 15'5" N of E
 intersection 22nd St & Avalon Blvd @ S.W.
 cor of end of conc. parvt. of 22nd St.

SHEET	Page
1	1-2

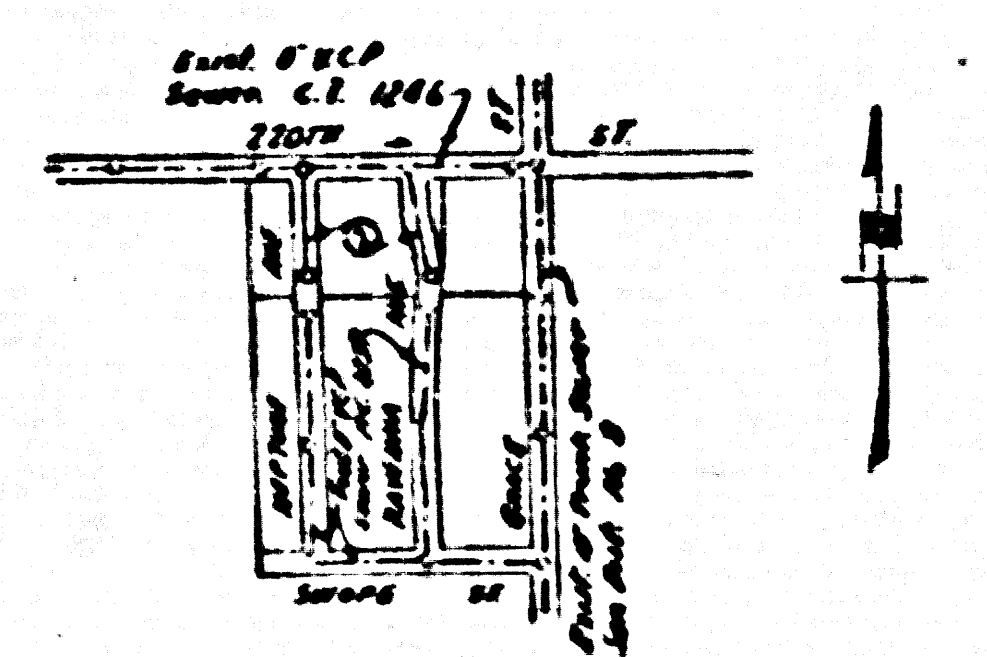
NO CHARGE FOR CONNECTIONS
 12-22-56

Checked 9-21-56 W. Larson

from line 7

LOMITA BLDG. DIST. NO 7-L

- NOTE:**
- Provide stakes on the property lines or property lines produced at right angles to the sewer line at the corner line of each manhole.
- No representative of the County Engineer will survey or layout any portion of the work.
- The owner or his authorized representative shall furnish the County Engineer with grade sheets and stations for all house laterals and Y branches and shall provide stakes for them at their proper locations with stationing plainly marked. Any change in location shall be requested in writing by the owner or his representative.
- No revisions shall be made in these plans without the approval of the County Engineer.
1. Use standard manhole frames and covers, S-a-1117.
 2. Use standard strength pipe except as noted.
 3. Use cement mortar for all vitrified clay pipe joints.
 4. Resurface all trench within paved area to meet L.A. County Road Dept. or California State Highway Dept. requirements in accordance with permit.
 5. Encase four feet of sewer at points of interference with poles, S-a-1119.
 6. House laterals to be constructed with inverts at property line 6 feet below curb grade except as noted.
 7. All structures shall be brick sewer structures, S-a-1104.
 8. For airtight leakage test, use Formula No. 1, Spec's., Sec. 51.
- Manhole tops in unimproved Rights-of-Way to be 6" above finish grade.



PROFILE, ALIGNMENT AND GRADE OF
 SANITARY SEWERS
 TO BE CONSTRUCTED IN
 TRACT NO 17001
 23,472
 (2)
 PRIVATE CONTRACT NO. 3819
 W. S. 28
 ONE SHEET
 Scale: VERT 1"=4'
 HORIZ 1"=40'
 DEC. 1955
 PREPARED IN THE OFFICES OF
 ANCHORAGE ENGINEERING COMPANY
 SIGNED: [Signature]
 No. C.E.N. 7762
 FOR LEGEND SEE PLAN NO. S-a-64

NOTE:

Grades to which this improvement is to be constructed are shown on plans and profiles. Grade sheets for top of curbs, corner line of streets, or corner line of alleys are shown by circles on profiles. As all points between designated points the grade shall be established so as to conform to a straight line drawn between said designated points.

Elevations are at least above U.S.C. & G.S. See Laws of 1949.

This drawing and the data hereon are hereby made a part of the specifications.

Work shall be commenced according to specifications on file in the office of the County Engineer and shall be prosecuted only in the presence of the County Engineer.

Before work can be started, the contractor must obtain a permit to occupy in County streets from the L.A. County Road Dept., 108 W. 2nd St. and make a deposit with the County Engineer, Room 324, 253 South Broadway, sufficient to cover the cost of construction inspection and record plans.

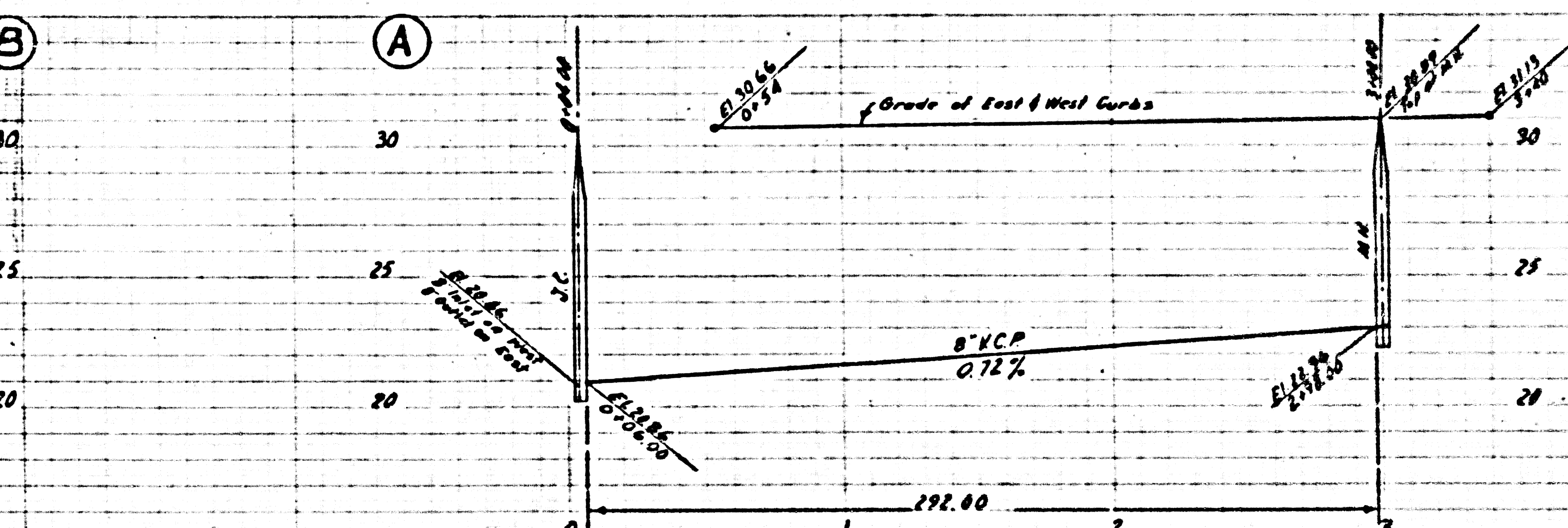
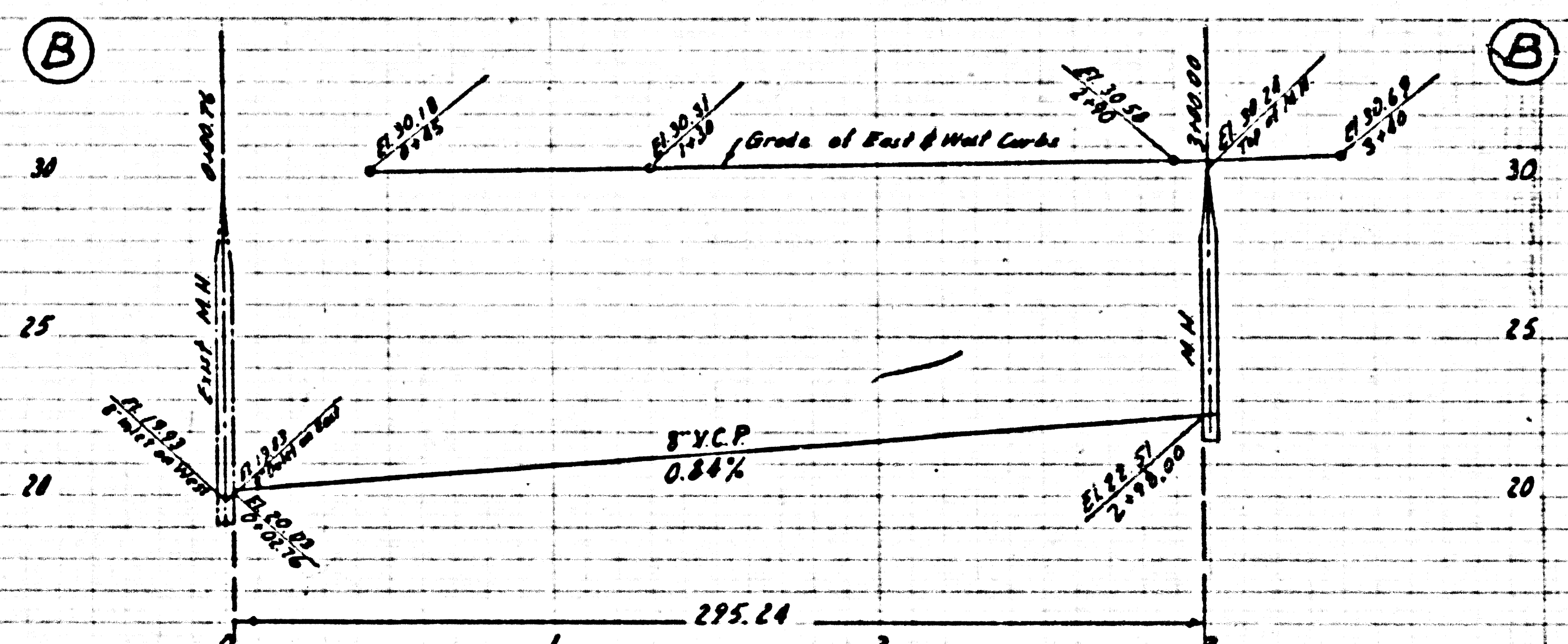
Approval of this plan by the County of Los Angeles does not constitute a representation as to the accuracy of the location of or the existence or non-existence of any underground utility, pipe, or structure within the limits of this project. This note applies to all sheets.

If work is to be done in a State Highway, a permit must be obtained from the State of California, Division of Highways, 120 South Spring Street.

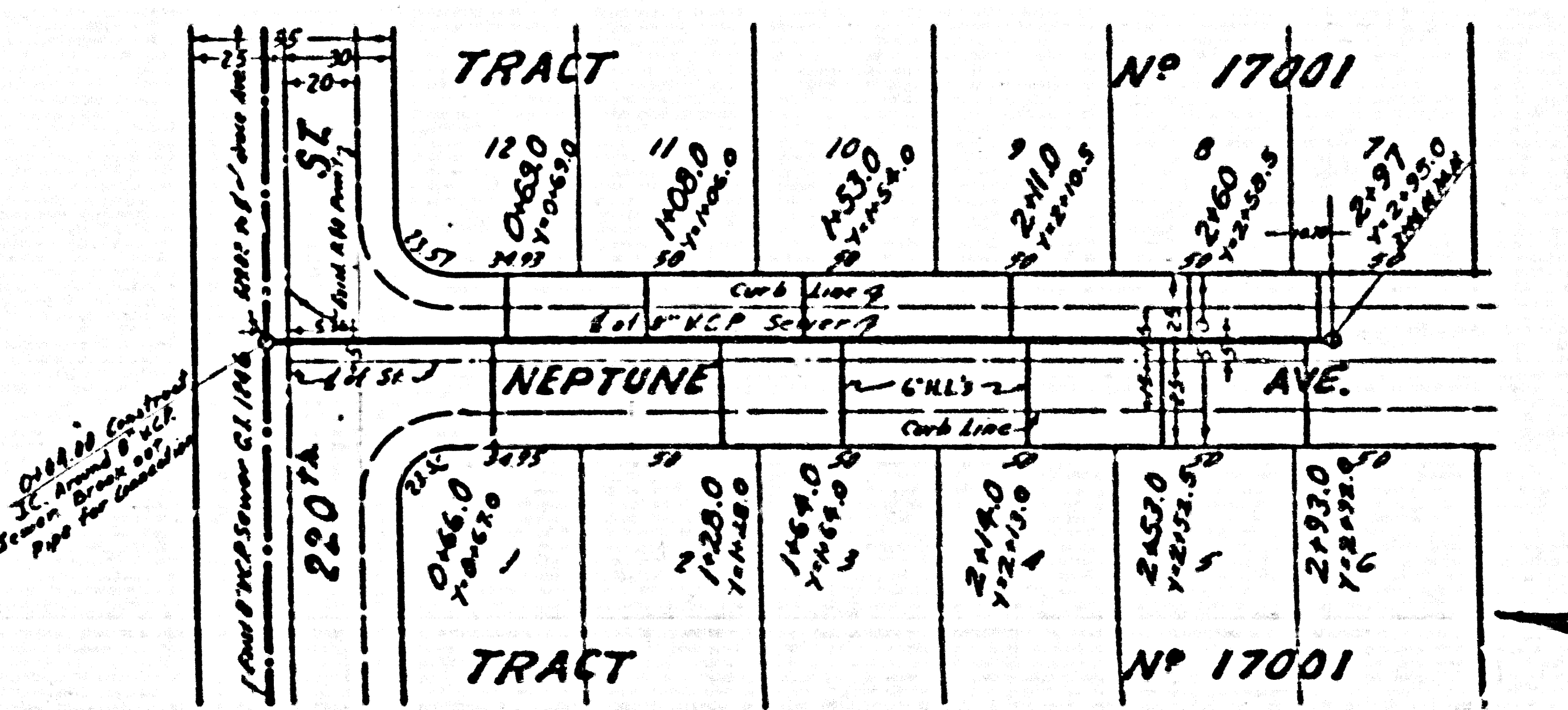
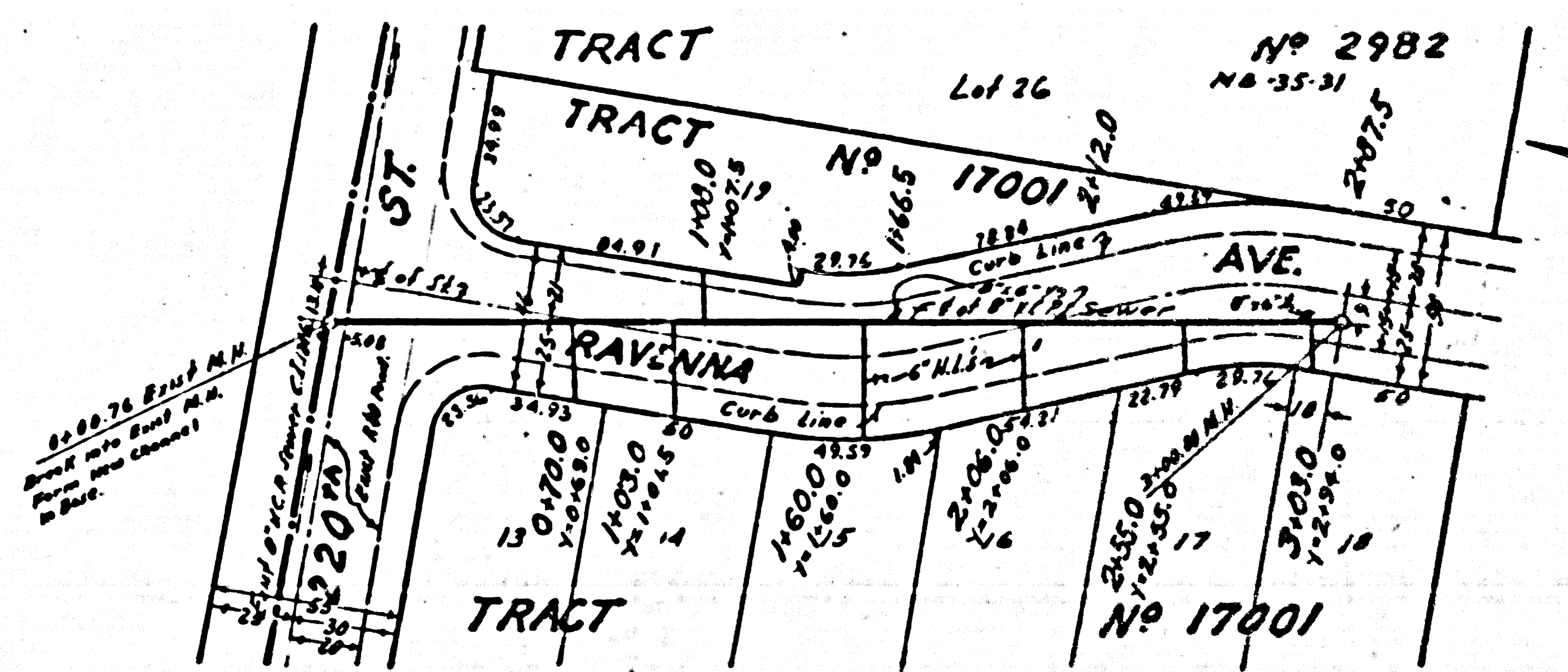
COUNTY OF LOS ANGELES, CALIFORNIA

Approved, John A. Lambie, County Engineer
 Approved, A. M. Rasmussen
 A. P. Collins
 Chief Clerk, CO. SAN DIST. NO. 8
 E. P. [Signature]
 Checked by R. E. [Signature] 12-22-55
 Office of County Engineer, Box, S. E. No. 7862.

TR. NO 17001
 PC 3819



PC 3819
Page 2
NO CHARGE FOR CONNECTIONS
23,473



PC 3817

trim line