

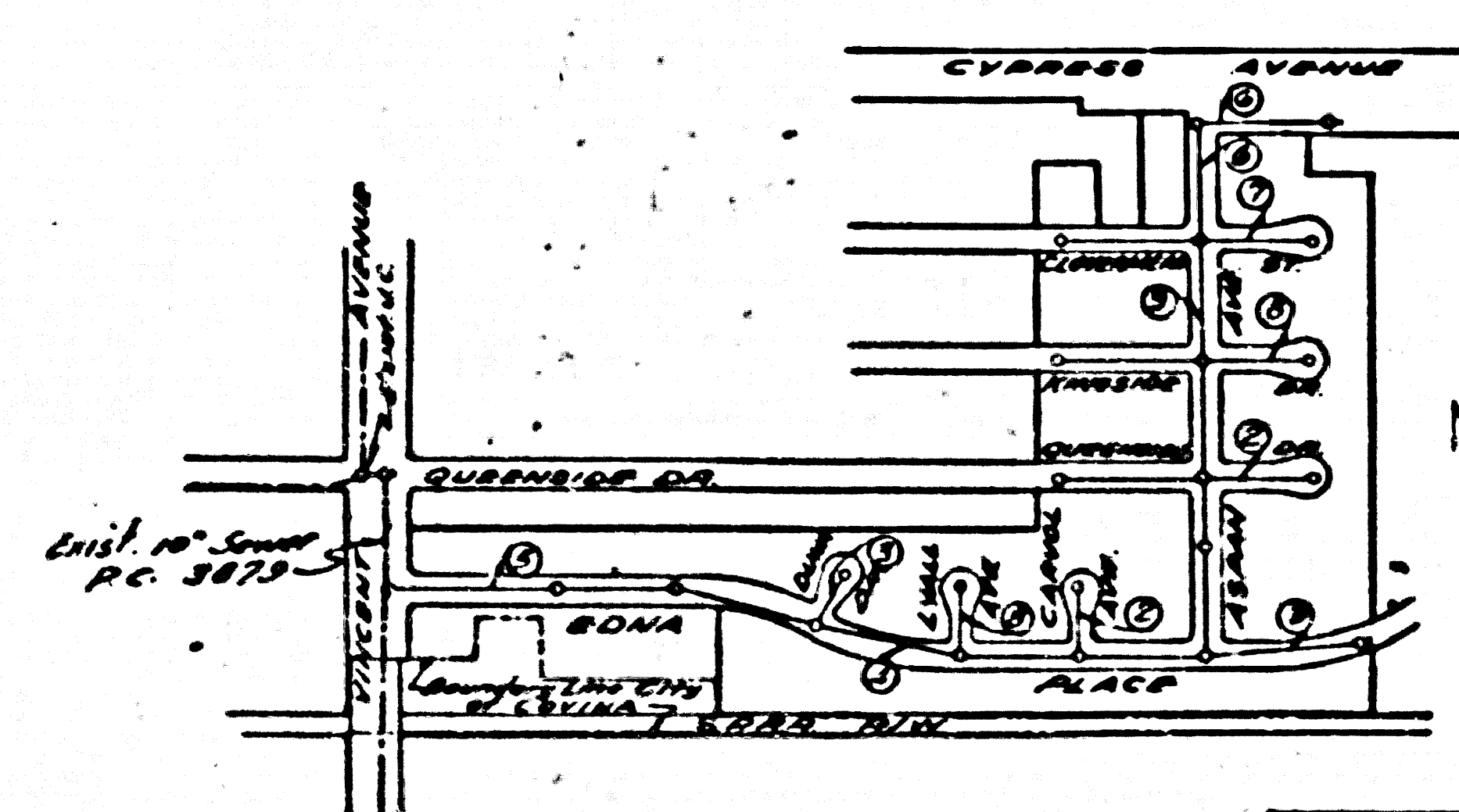
Trim Line

B.M. 5675 EL. 440.633 L.F.T.
 1' S. N. Edge of Weir Box
 SW. Cor. of Vincent Ave.
 S. San Bernardino Road on Center Web.

SAN DIMAS BLDG. DIST. U# 10

- NOTE:**
- 1. Provide stakes on the property lines or property lines produced at right angles to the sewer line at the center line of each manhole.
 - 2. No representative of the County Engineer will survey or layout any portion of the work.
 - 3. The owner or his authorized representative shall furnish the County Engineer with grade sheets and stations for all house laterals and Y branches and shall provide stakes for them at their proper locations with stationing plainly marked. Any change in location shall be requested in writing by the owner or his representative.
 - 4. No revisions shall be made in these plans without the approval of the County Engineer.
 - 5. Use standard manhole frames and covers, S-a-117.
 - 6. Use standard strength pipe except as noted.
 - 7. Use cement mortar for all vitrified clay pipe joints.
 - 8. Resurface all trench within paved area to meet L.A. County Road Dept. or California State Highway Dept. requirements in accordance with permit.
 - 9. Encase four foot sewer at points of interference with poles, S-a-119.
 - 10. House laterals to be constructed with inverts at property line 6 feet below curb grade except as noted.
 - 11. All structures shall be brick sewer structures, S-a-104.
 - 12. For allowable leakage test, see Formula No. 1, Spec's, Sec. 51.

SHEET	PAGES
1	1-5
2	6-9



INDEX MAP
 TRACT NR 22138
 SCALE 1"=400'
 PC 3820

Checked 6-8-56 W. Green
 Trim Line

PROFILE, ALIGNMENT AND GRADE OF
SANITARY SEWERS
 TO BE CONSTRUCTED IN
TRACT NR 22138 (22,827)
 PRIVATE CONTRACT NO. 3820
 W. S. 47
 TWO SHEETS
 Scale: VERT. 1"=4' HORIZ. 1"=40'
 DECEMBER 1955
 PREPARED IN THE OFFICE OF
SECURITY ENGINEERING CO.
 R. C. Bailey
 No. C. E. No. 8928
 FOR LEGEND SEE PLAN NO. S-a-64

NOTE:

Grades to which the improvement is to be constructed are shown on plan and profile. Grade points for top of curb, corner line of street, or corner line of alley are shown by circles on profile. At all points between designated points the grade shall be established as to conform to a straight line between said designated points.

Elevations are in feet above U.S.C. & G.S. Mean Level Datum of 1929.

The drawing and the data hereon are hereby made a part of the specifications.

Work shall be constructed according to specifications on file in the office of the County Engineer and shall be prosecuted only in the presence of the County Engineer.

Before work can be started, the contractor must obtain a permit to excavate in County street from the L.A. County Road Dept., 108 W. 2nd St. and make a deposit with the County Engineer, Room 314, 253 South Broadway, sufficient to cover the cost of construction inspection and record plans.

Approval of this plan by the County of Los Angeles does not constitute a representation as to the accuracy of the location of or the existence or non-existence of any underground utility, pipe, or structure within the limits of the project. This note applies to all sheets.

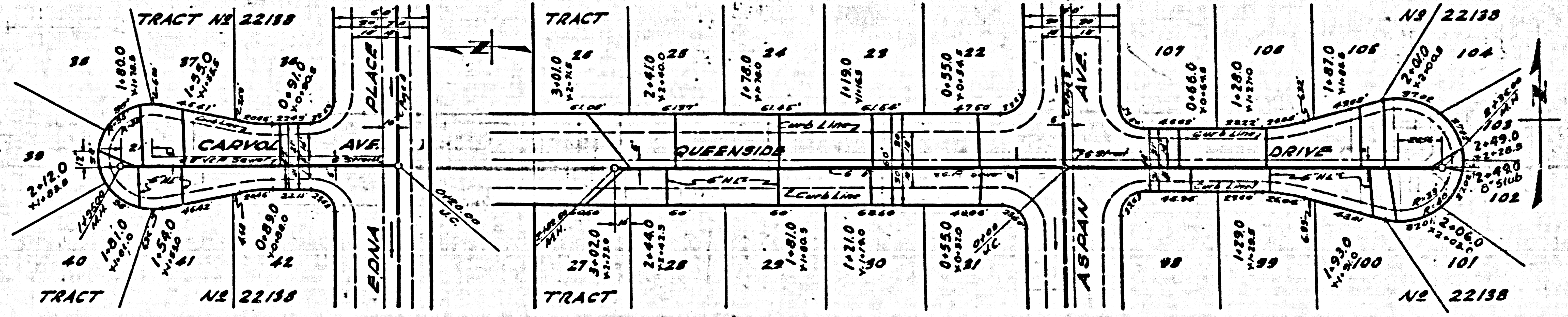
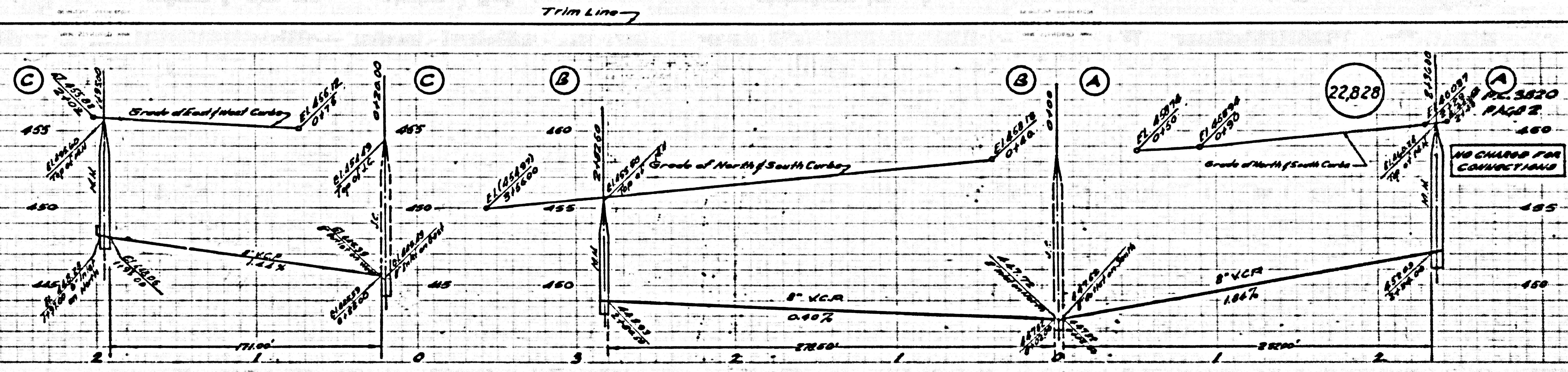
If work is to be done on a State Highway, a permit must be obtained from the State of California, Division of Highways, 120 South Spring Street.

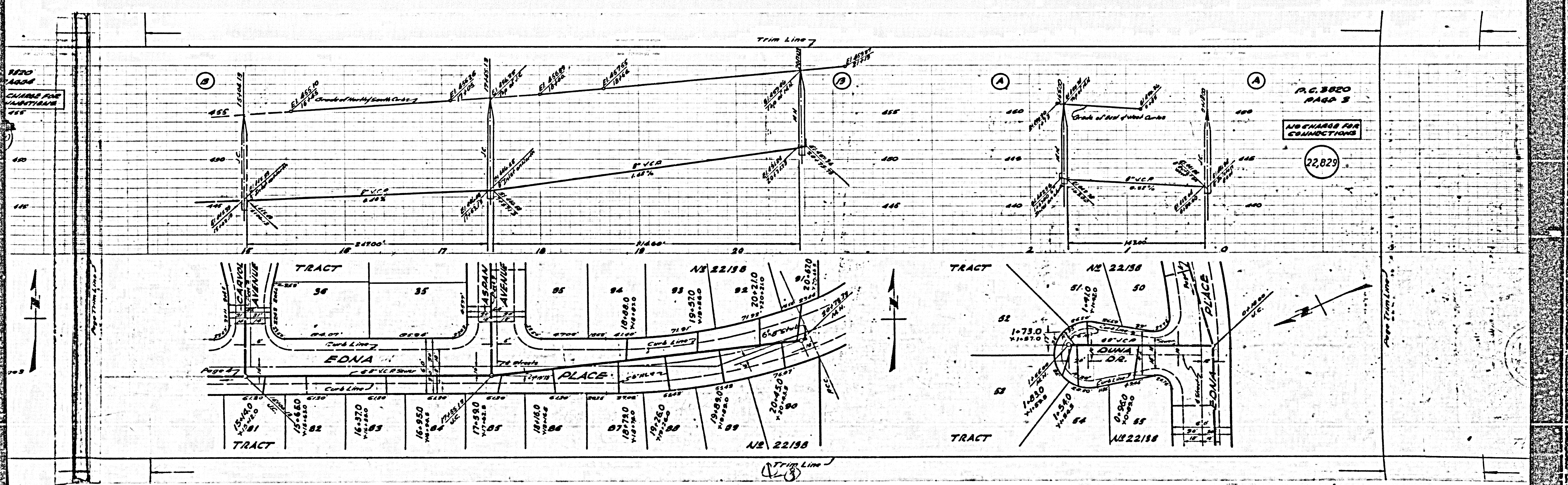
COUNTY OF LOS ANGELES, CALIFORNIA

Approved, John A. Lambie, County Engineer
 Approved, A. M. Egan
 A. P. Collins
 Civil Engineer
 Checked by: R. C. Bailey 5-12-56
 Office of County Engineer, Box C. E. No. 7860

PAGE 1
 PC 3820

TRACT NR 22138
 PC 3820



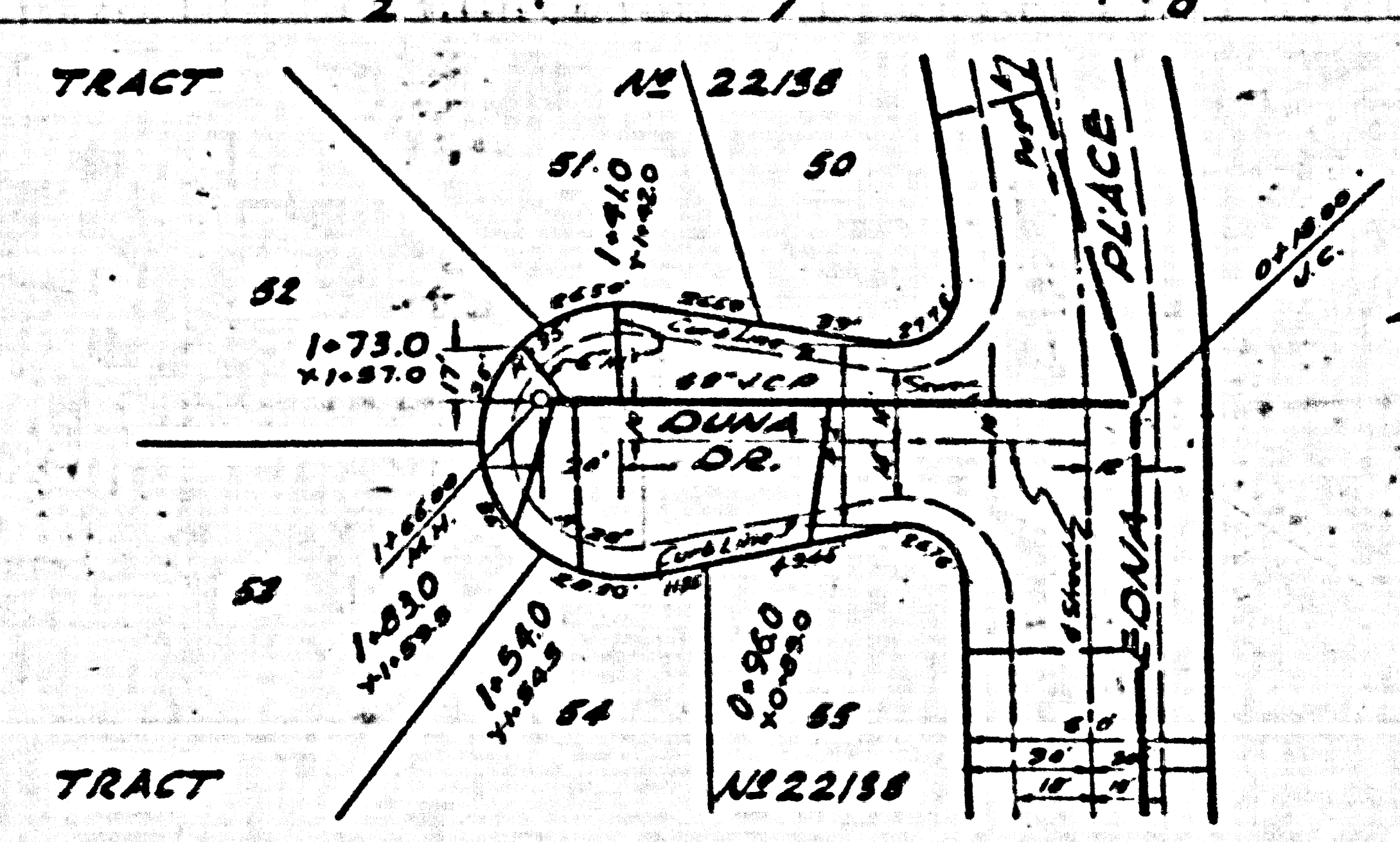
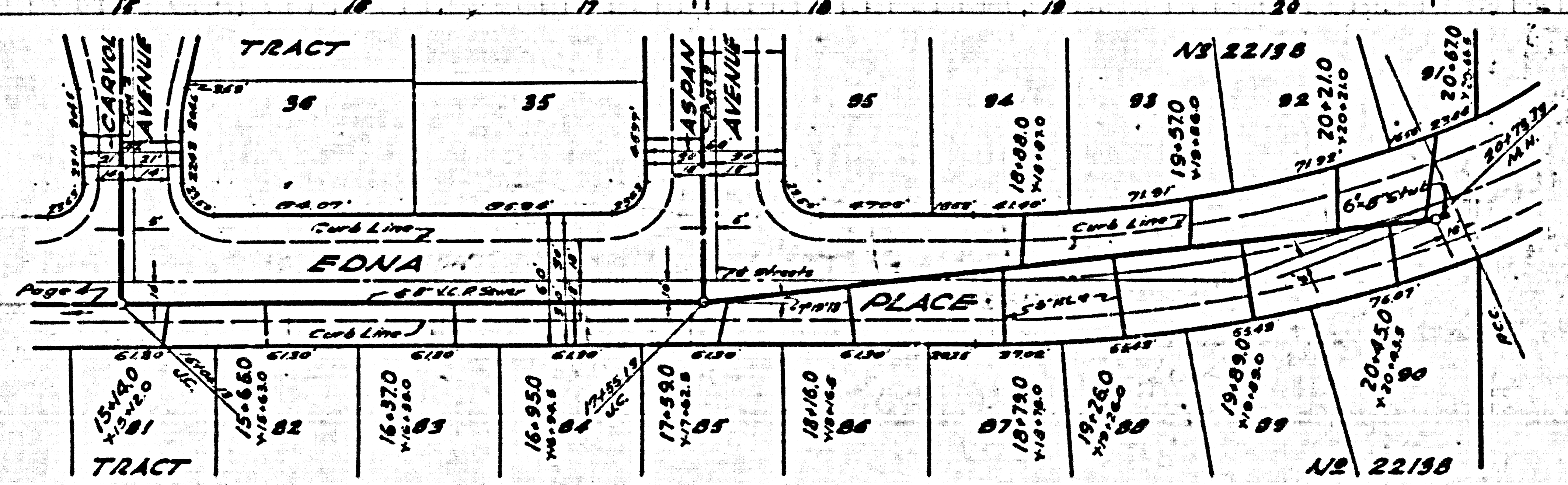


NO CHARGE FOR CONNECTIONS

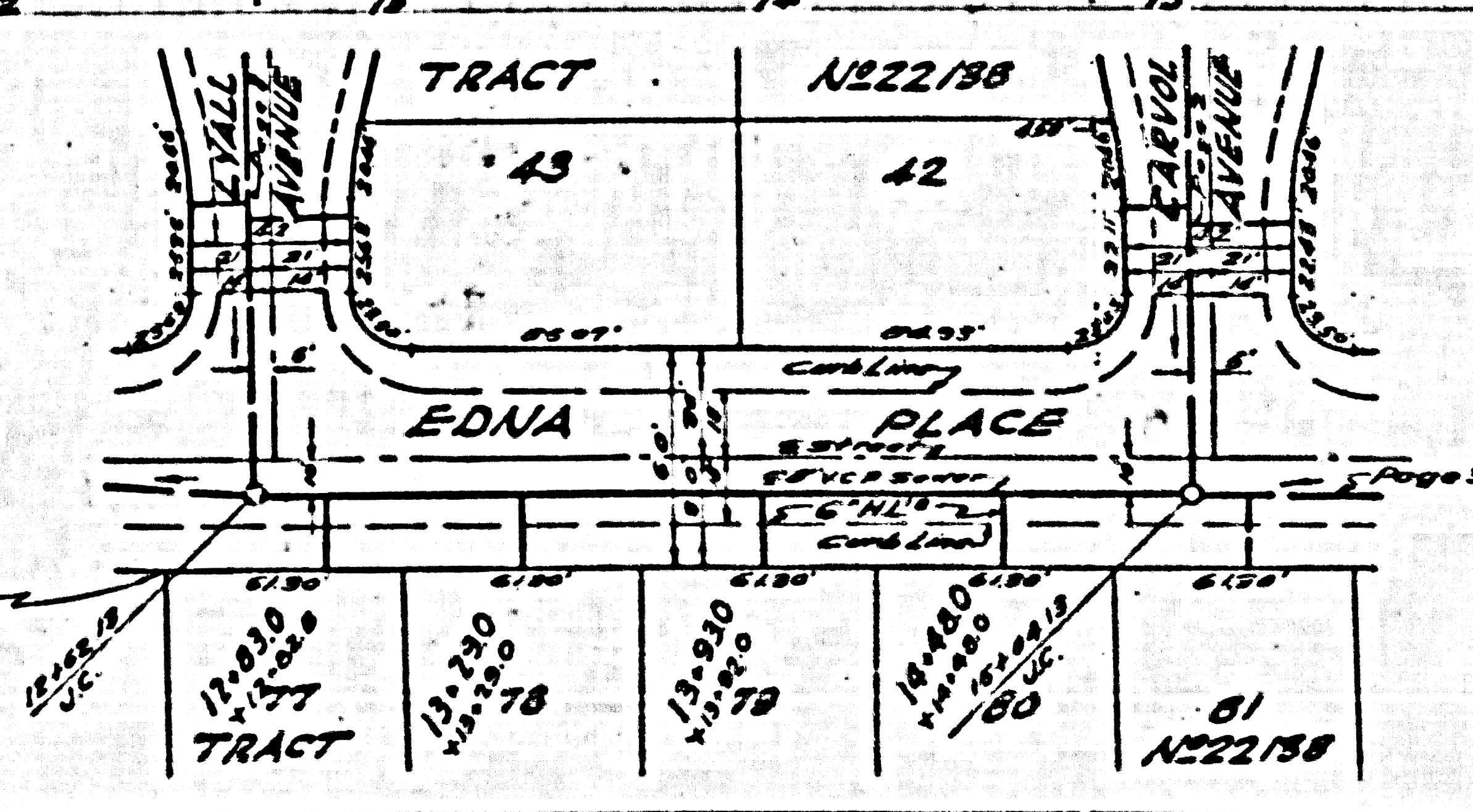
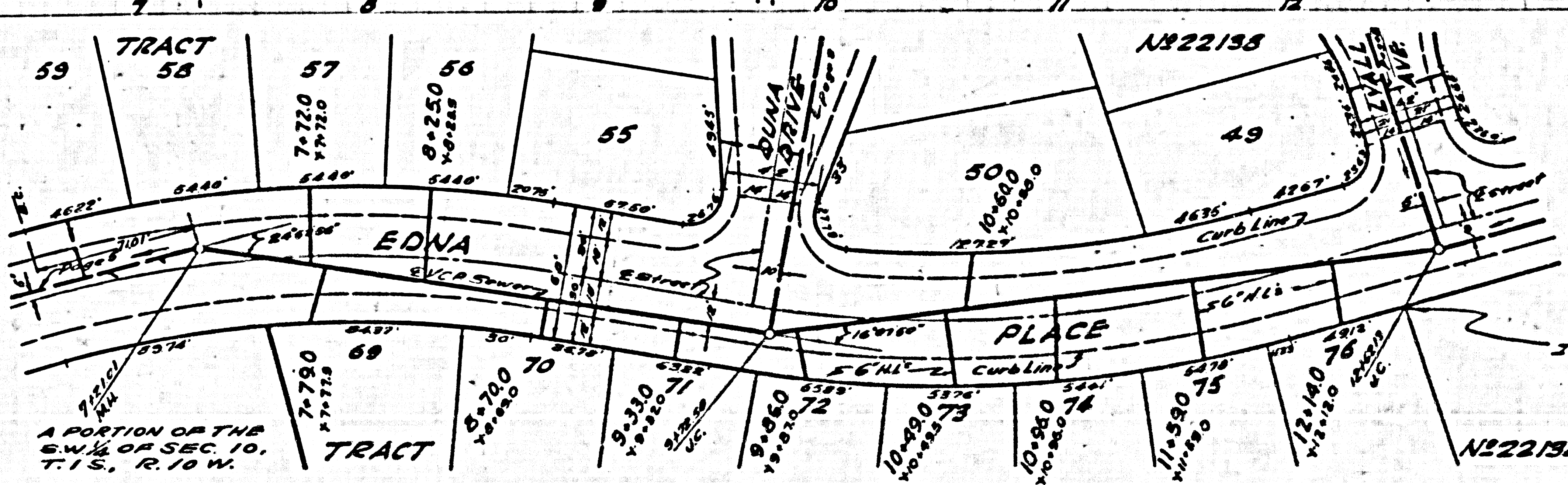
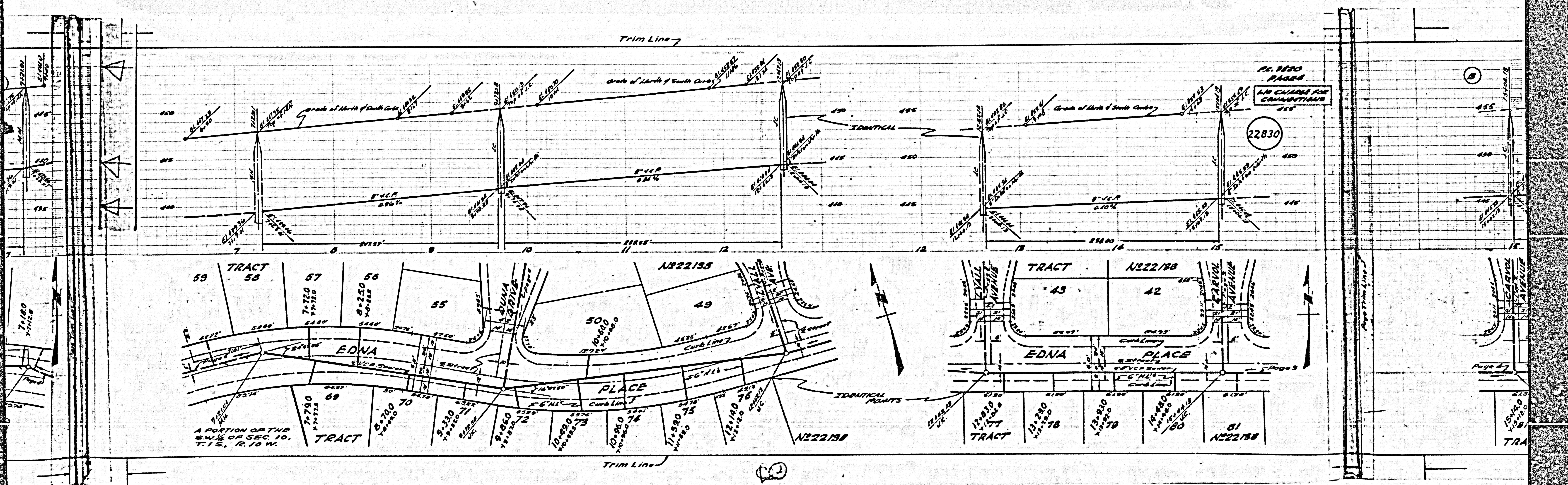
P.C. 3820
PAGE 3

NO CHARGE FOR CONNECTIONS

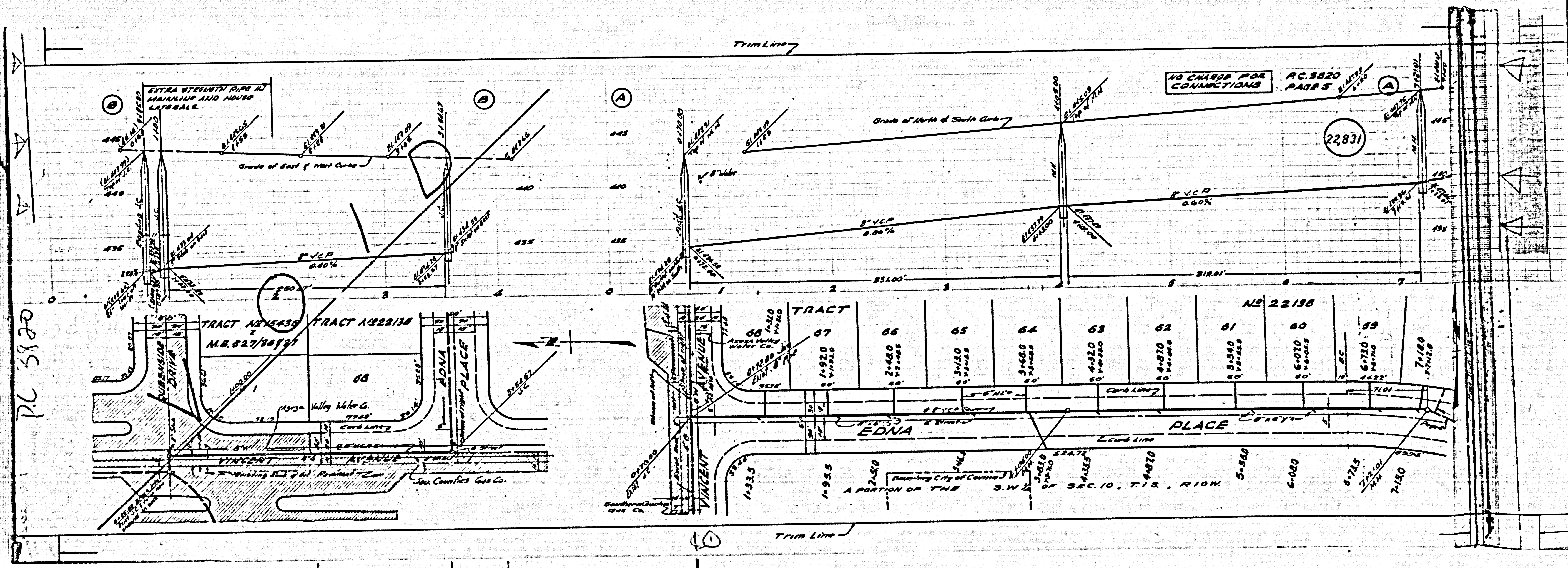
22,829



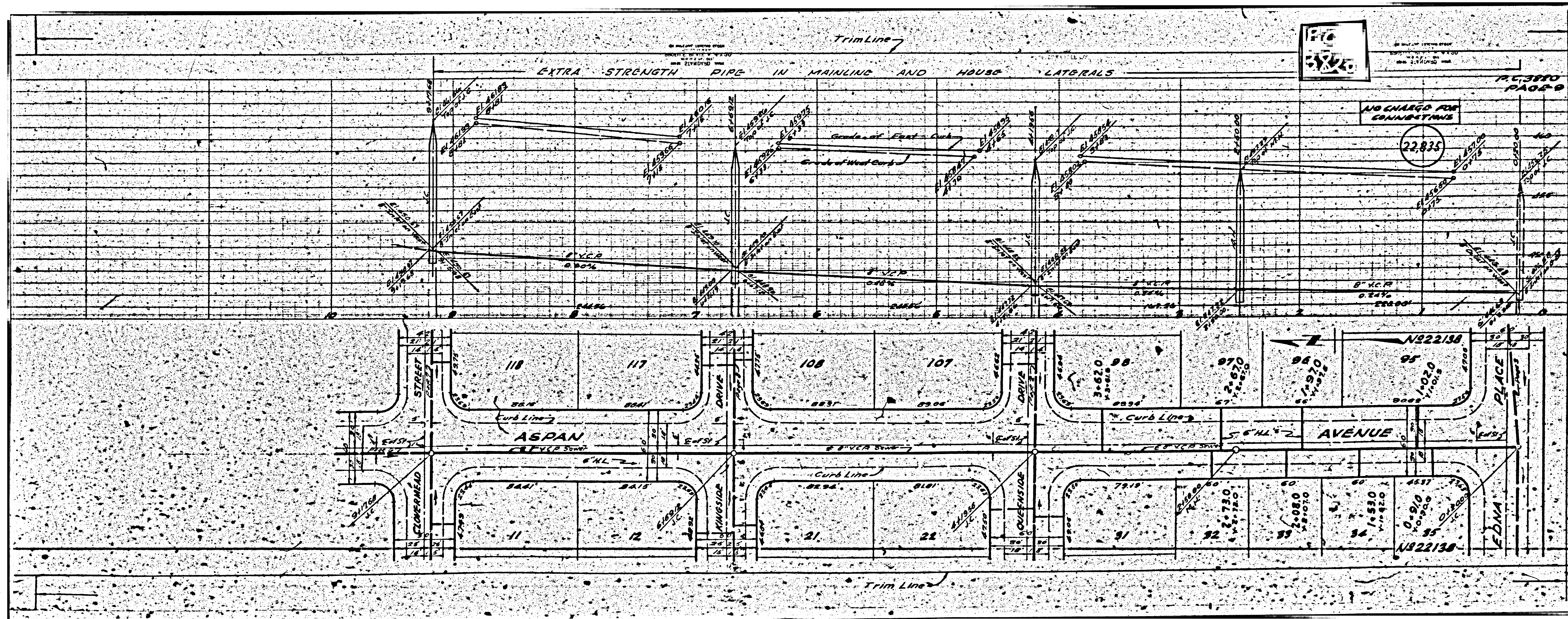
Trim Line



22

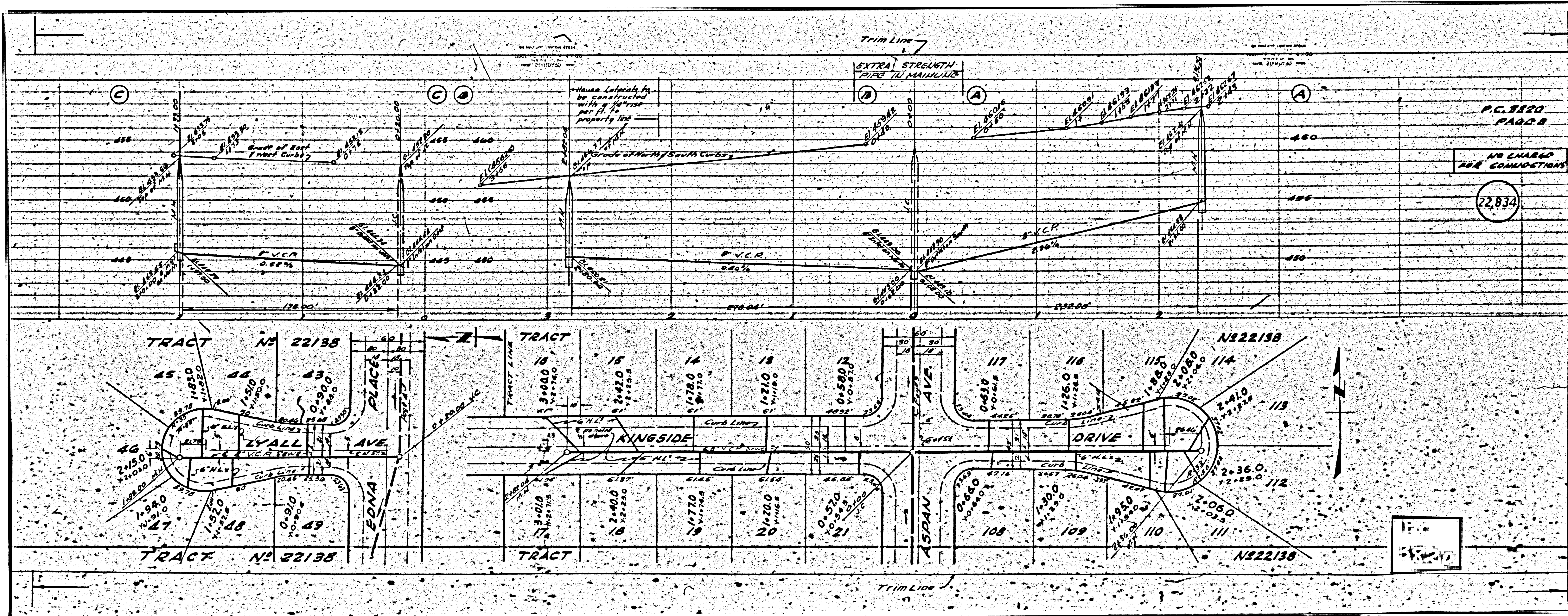


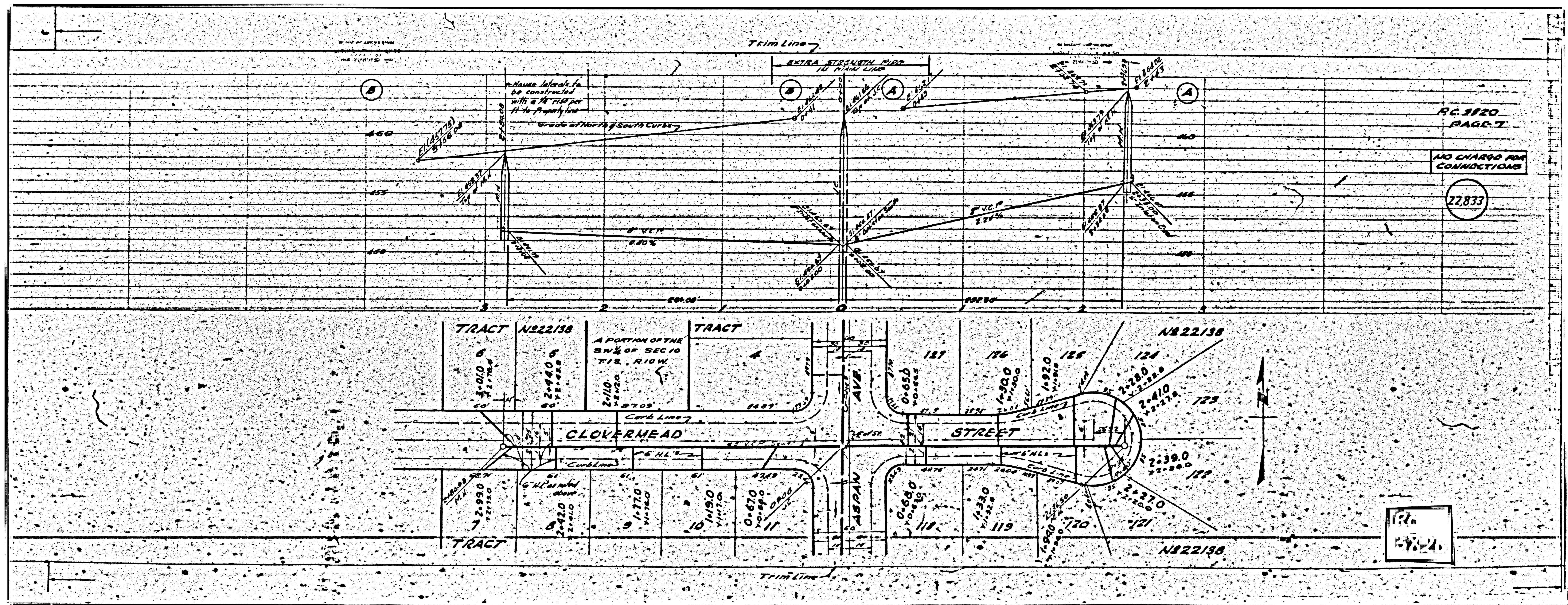
P.C. 3820



NO CHARGE
FOR CONNECTIONS

22,834

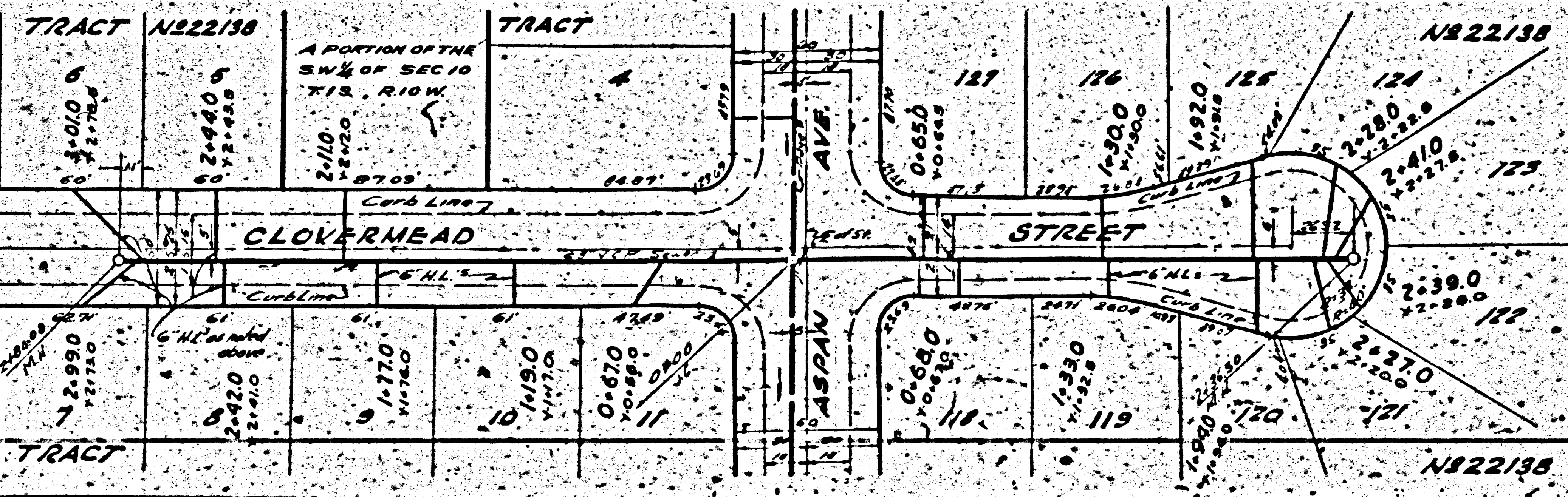




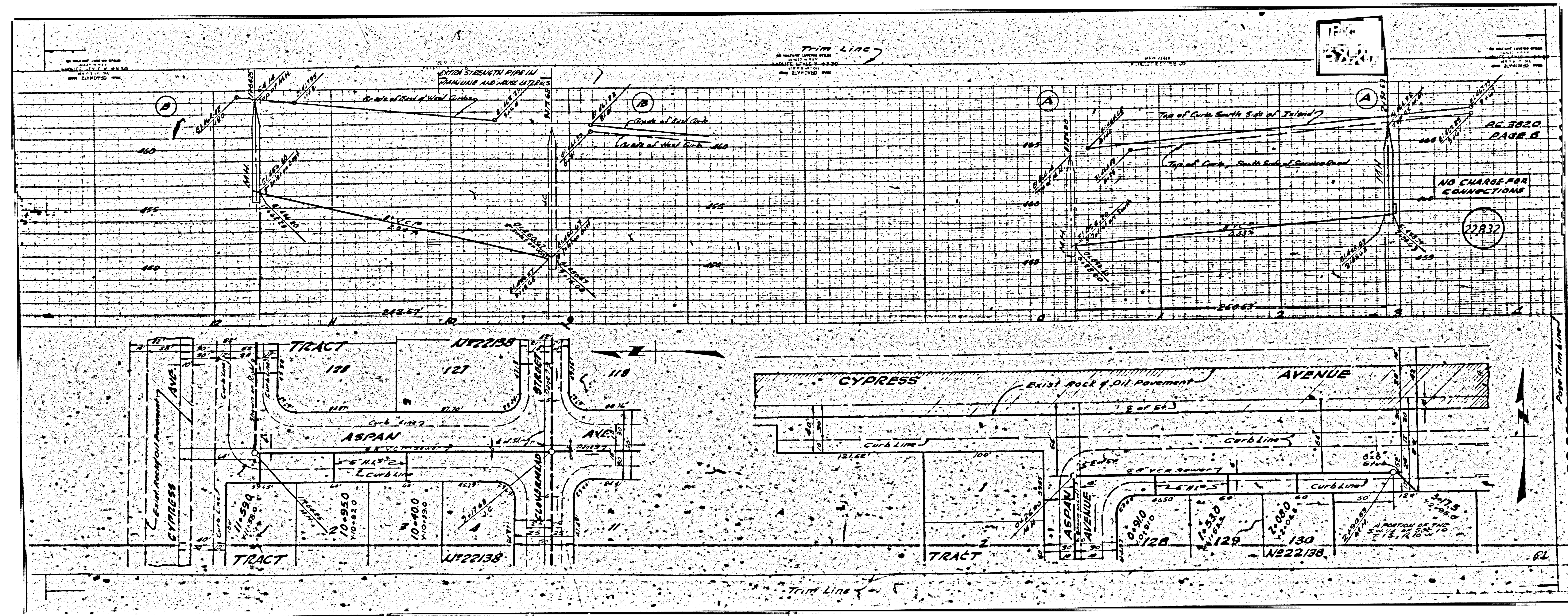
RC 3120
PAGE 7

NO CHARGE FOR
CONNECTIONS

22833



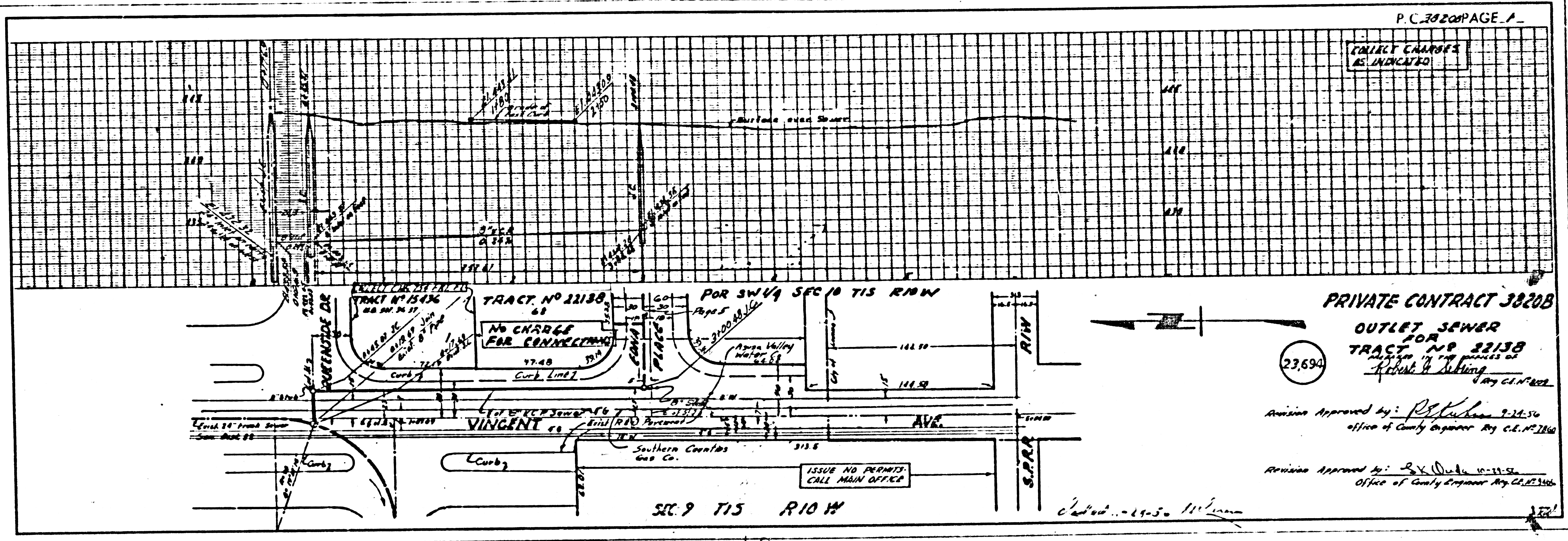
157a
-4824



SAN DIMAS - DIST 10

P.C. 3820B PAGE 1
COLLECT CHARGES
AS INDICATED

P.C. 3820B



P.C. 3820B