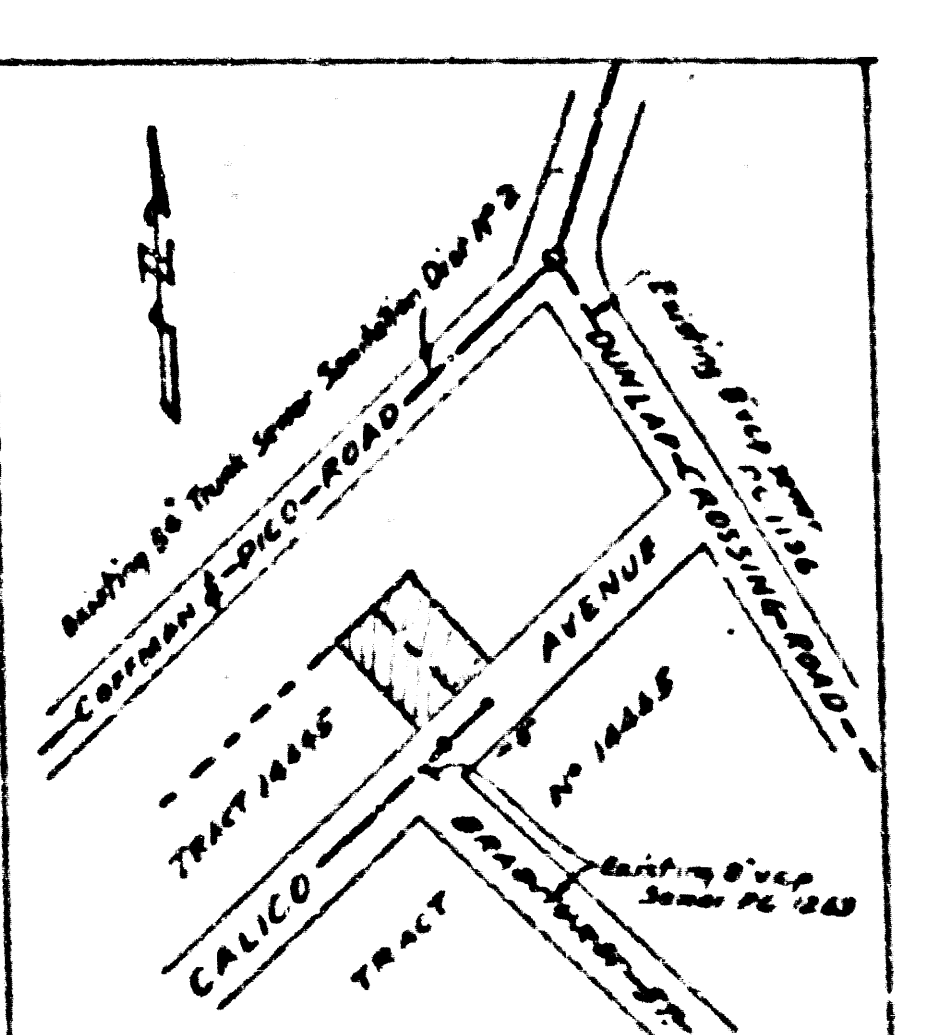


**WHITTIER BLDG DIST No 11**

**NOTE:**  
 Provide stakes on the property lines or property lines produced at right angles to the sewer line at the center line of each manhole.  
 No representative of the County Engineer will survey or layout any portion of the work.  
 The owner or his authorized representative shall furnish the County Engineer with grade sheets and stations for all house laterals and Y branches and shall provide stakes for them at their proper locations with stationing plainly marked. Any change in location shall be requested in writing by the owner or his representative.  
 No revisions shall be made in these plans without the approval of the County Engineer.

1. Use standard manhole frames and covers, S-a-117.
2. Use standard strength pipe except as noted.
3. Use cement mortar for all vitrified clay pipe joints.
4. Resurface all trench within paved area to meet L. A. County Road Dept. or California State Highway Dept. requirements in accordance with permit.
5. Encase four feet of sewer at points of interference with poles, S-a-119.
6. House laterals to be constructed with 1/2" rise per foot to property line.
7. All structures shall be brick sewer structures, S-a-104.
8. For allowable leakage test, see Formula No. 1, Spec's, Sec. 51.



NO CHARGE FOR CONNECTION

BENCH MARK: L.A. County Road Dept. F.B. 80284-B  
 Cut 10.00 on 34" Perspex Trip on N. side of DUNLAP CROSSING ROAD at BARLOW ROAD.

Sheet	Page
1	1

Trim Line

PC. 3822  
 PAGE 1

22,174

PROFILE ALIGNMENT AND GRADE OF  
**SANITARY SEWERS**  
 TO BE CONSTRUCTED IN  
**CALICO AVENUE FROM  
 BRADHURST STREET NORTHERLY 50 FEET**

PRIVATE CONTRACT NO. 3822  
 W. S. 36  
 SHEETS 1

Scale: VERT. 1"=10'  
 HORIZ. 1"=40'

DECEMBER, 1955  
 PREPARED IN THE OFFICES OF  
 GLEN ROOD

*Glen Rood*  
 No. C. E. No. 2093

FOR LEGEND SEE PLAN NO. S-a-64

**NOTE:**  
 Grades to which this improvement is to be constructed are shown on plans and profiles. Grade points for top of curb, center line of streets, or center line of alleys are shown by circles on profiles. At all points between designated points the grade shall be established so as to conform to a straight line drawn between said designated points.  
 Elevation are in feet above U.S.C. & G.S. mean level datum of 1929.  
 This drawing and the data hereon are hereby made a part of the specifications.  
 Work shall be constructed according to specifications on file in the office of the County Engineer and shall be prosecuted only in the presence of the County Engineer.  
 Before work can be started, the contractor must obtain a permit to excavate in County streets from the L.A. County Road Dept., 108 W. 2nd St. and make a deposit with the County Engineer, Room 222, 222 South Broadway, sufficient to cover the cost of construction inspection and record plans.  
 Approval of this plan by the County of Los Angeles does not constitute a representation as to the accuracy of the location of or the existence or non-existence of any underground utility, pipe, or structure within the limits of this project. This note applies to all sheets.  
 If work to be done is a State Highway, a permit must be obtained from the State of California, Division of Highways, 128 South Spring Street.

**COUNTY OF LOS ANGELES, CALIFORNIA**  
 Approved: John A. Lambie, County Engineer  
 Approved: A. M. Ryan, CHIEF ENGINEER DIST. NO. 10  
 BY *A. P. Peltier* BY *A. M. Ryan*  
 Surveyor Engineer Office Engineer  
 Checked By: *J. K. O'Neil* 1-13-56  
 Office of County Engineer, Rm. C. E. No. 3406  
 11

CALICO AVE EXTENSION

PC. 3822  
 588E-0A