

C 3823
AGE 2

NO CHARGE FOR CONNECTIONS

25696

D.M. S.D. 1928 L.T. S.P. CORNER N.W. CORNER
N.W. CORNER GALE AVENUE & HAWLEND
BLVD. Elev. 334.988

TRIM LINE 7
PUENTE BLDG. DIST. N^o 2

NOTE:

Provide stakes on the property lines or property lines produced at right angles in the sewer line at the center line of each manhole.

No representative of the County Engineer will survey or layout any portion of the work.

The owner or his authorized representative shall furnish the County Engineer with grade sheets and stations for all house laterals and Y branches and shall provide stakes for them at their proper locations with stationing plainly marked. Any change in location shall be requested in writing by the owner or his representative.

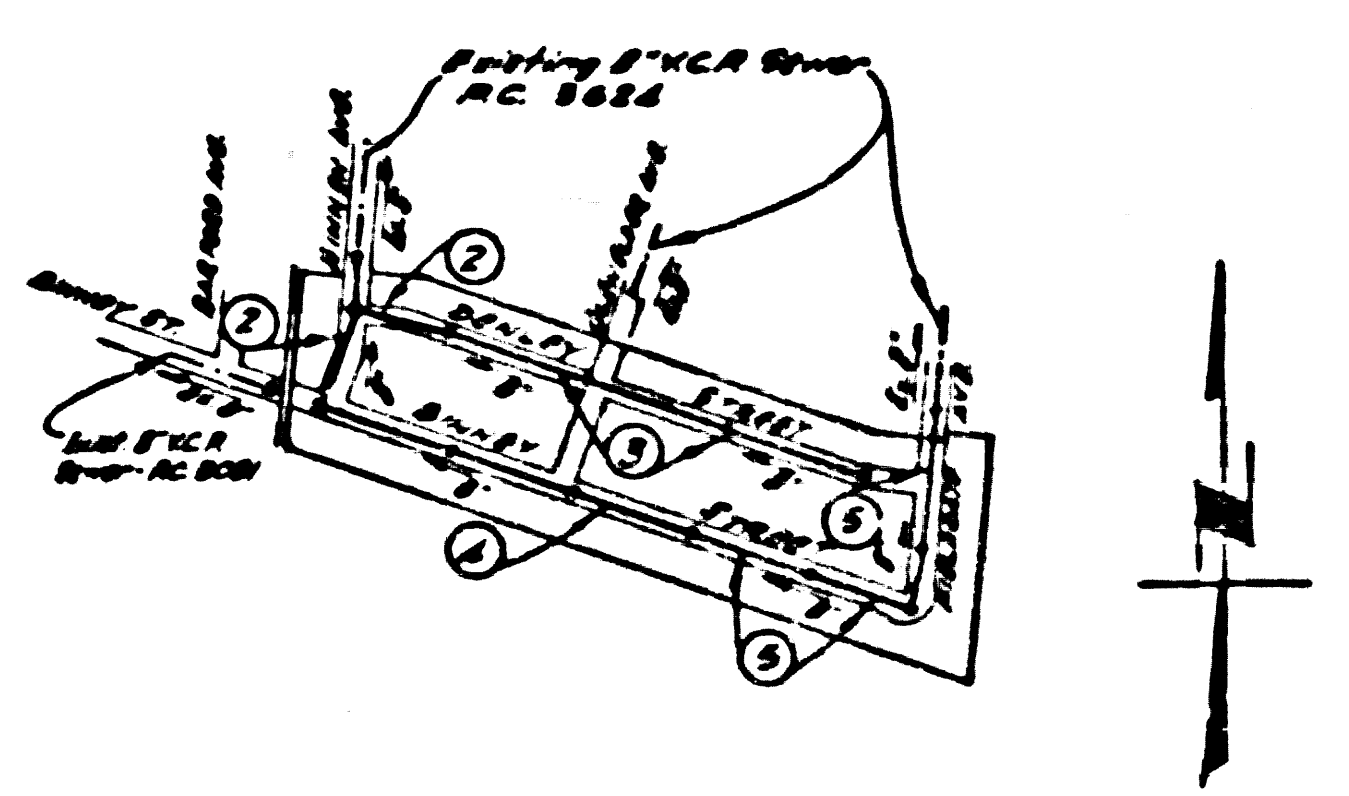
No revisions shall be made in these plans without the approval of the County Engineer.

1. Use standard manhole frames and covers, S-a 117.
2. Use standard strength pipe except as noted.
3. Use cement mortar for all vitrified clay pipe joints.
4. Resurface all trench within paved area to meet L.A. County Road Dept. or California State High Way Dept. requirements in accordance with permit.
5. Encase four feet of sewer at points of interference with poles, S-a 119.
6. House laterals to be constructed with inverts at property line 6" feet below curb grade except as noted.
7. All structures shall be brick sewer structures, S-a 104.
8. For allowable leakage test, use Formula No. 7, Spec. S. Sec. 51.

SHEET NO.	REVISION
1	1-5

NO CHARGE FOR CONNECTIONS

Retubed 4-5-36



INDEX MAP
TRACT N° 21616
RC 3823
SCALE: 1" = 600'

RC 3823
PAGE 1
TRACT N° 21616

PROFILE, ALIGNMENT AND GRADE OF
SANITARY SEWERS
TO BE CONSTRUCTED IN

PRIVATE CONTRACT NO. 8823
W. S. 38
ONE SHEET

Scale: VERT. 1" = 4'
HORIZ. 1" = 40'
DECEMBER, 1955

PREPARED IN THE OFFICES OF
SECURITY ENGINEERING CO.
UNDER THE SUPERVISION OF

Ralph C. Collins
Reg. C.E. No. 8332

FOR LEGEND SEE PLAN NO. S-a-64

NOTE:

Grades to which this improvement is to be constructed are shown on plans and profiles. Grade points for top of curbs, center line of streets, or center line of alleys are shown by circles on profiles. At all points between designated points the grade shall be established so as to conform to a straight line drawn between said designated points.

Elevations are in feet above U.S.C. of G.S. Mean Sea Level Datum of 1929.

This drawing and the data hereon are hereby made a part of the specifications.

Work shall be constructed according to specifications on file in the office of the County Engineer and shall be prosecuted only in the presence of the County Engineer.

Before work can be started, the contractor must obtain a permit to excavate in County streets from the L.A. County Road Dept., 1108 W. 2nd St. and make a deposit with the County Engineer \$200 (Two Hundred Dollars) sufficient to cover the cost of construction inspection and record plans.

Approval of this plan by the County of Los Angeles does not constitute a representation as to the accuracy of the location of or the existence or non-existence of any underground utility, pipe or structure within the limits of this project. This note applies to all sheets.

If work is to be done in a State Highway, a permit must be obtained from the State of California, Division of Highways, 1200 South Spring Street.

COUNTY OF LOS ANGELES, CALIFORNIA

Approved: *A. M. Room* County Engineer
 Approved: *R. C. Collins* District Engineer
 Checked by: *Retubed 4-5-36*
 Office of County Engineer, Reg. C. E. No. 7368

RC 3823
PAGE 1

25696

TRACT N° 21616

RC 3823

TRIM LINE

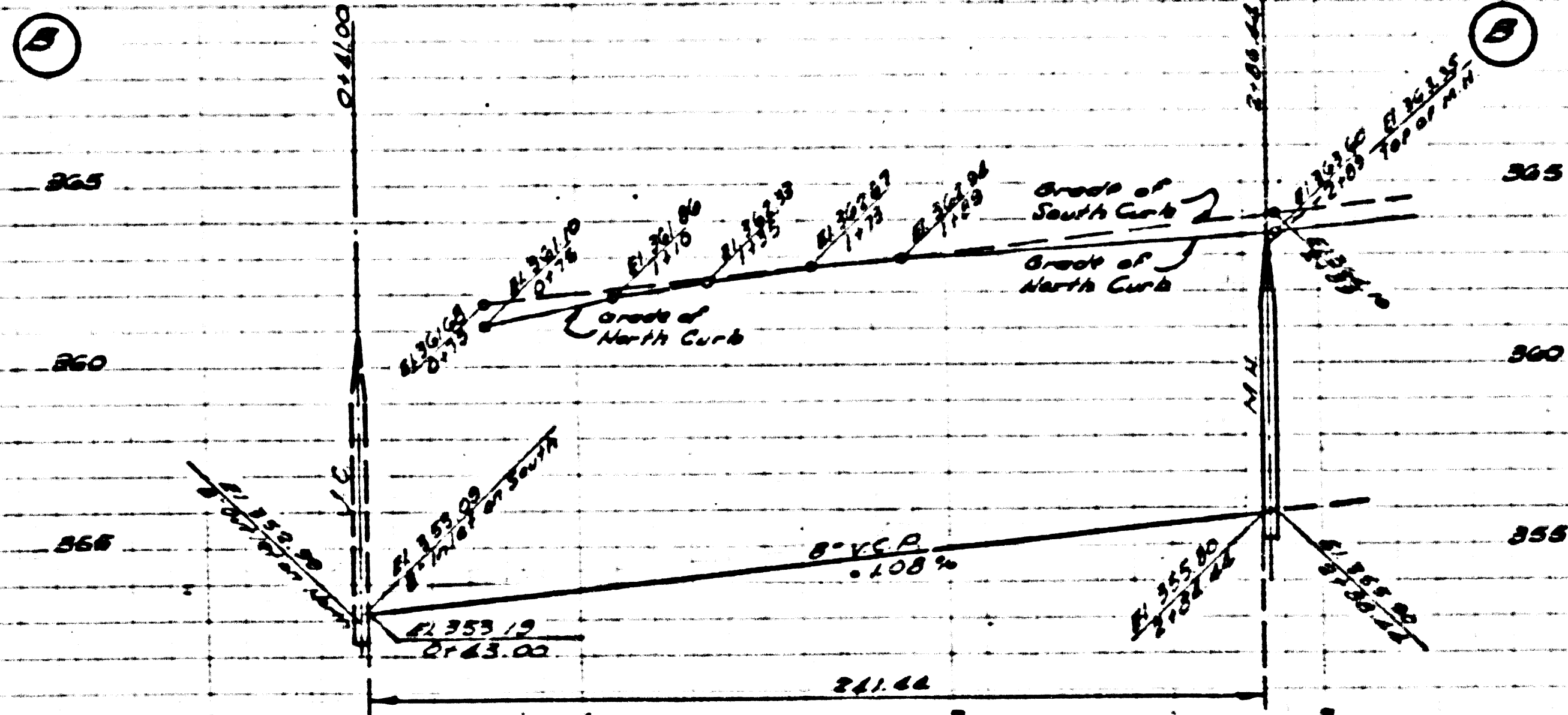
P.C. 3823
PAGE 3

NO CHARGE FOR
CONNECTIONS

25697

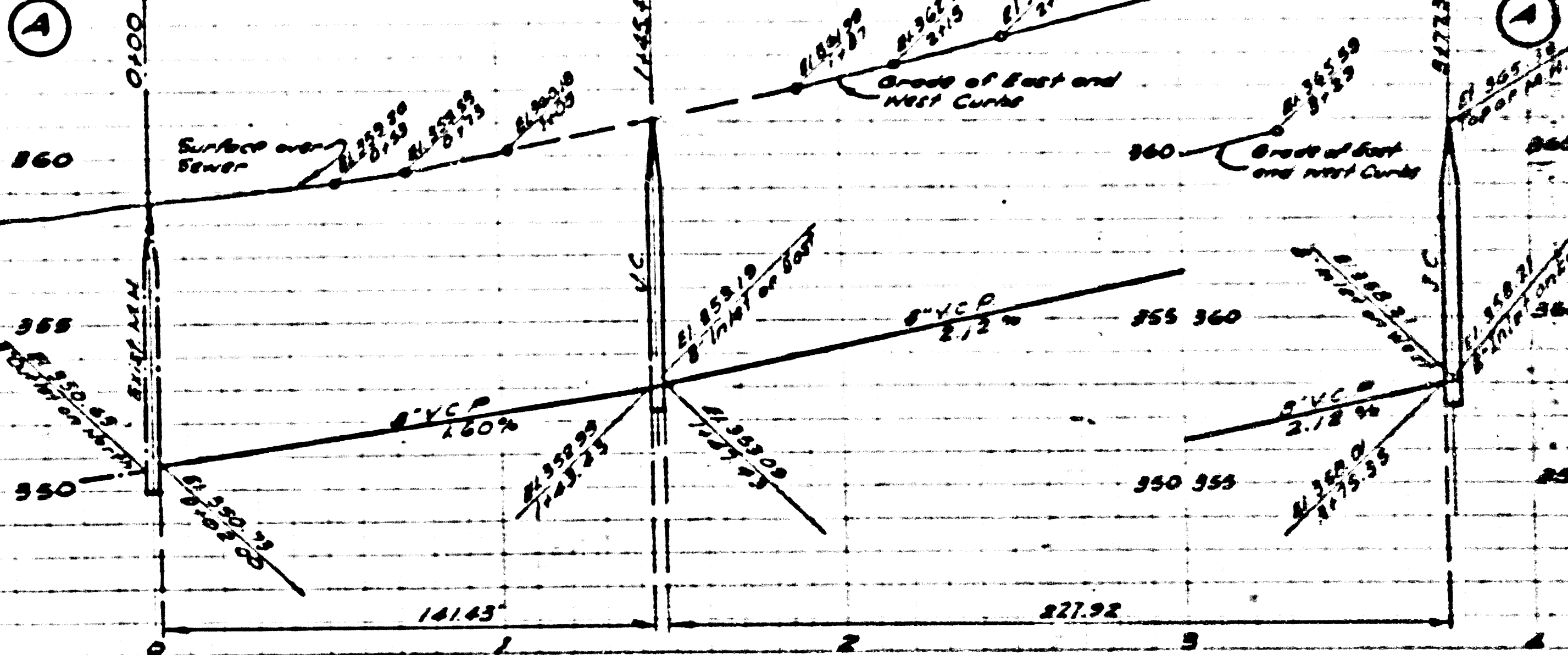
Ⓐ

Ⓑ



Ⓐ

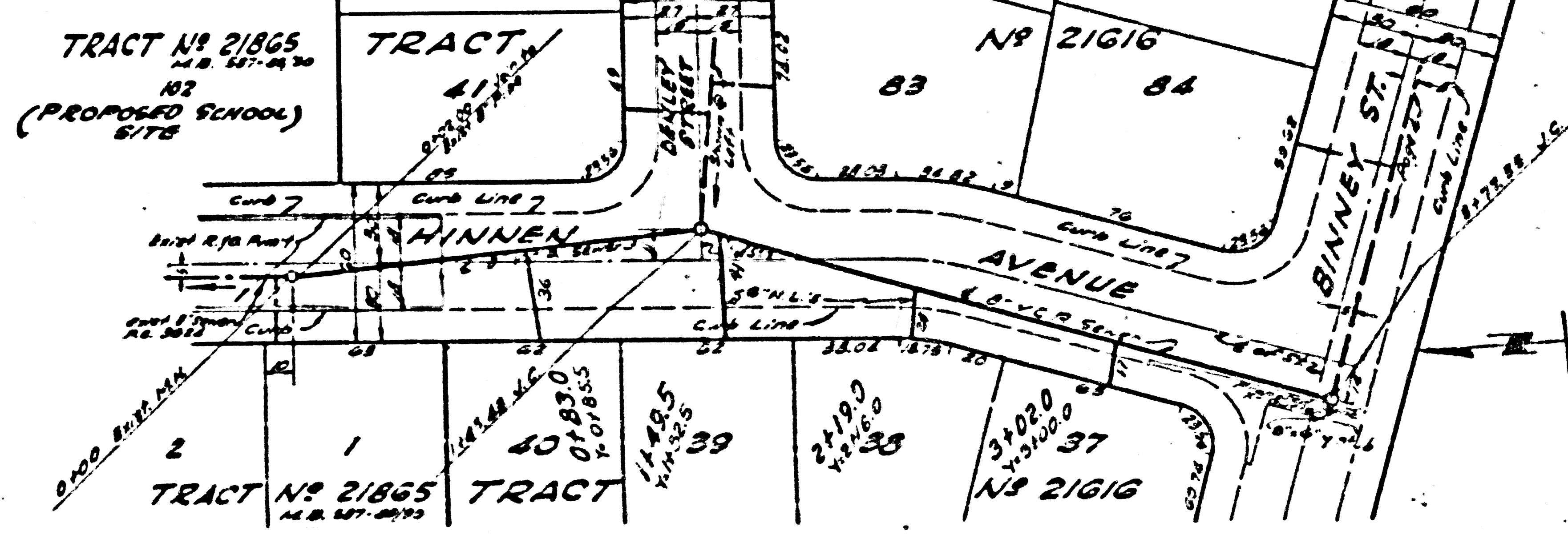
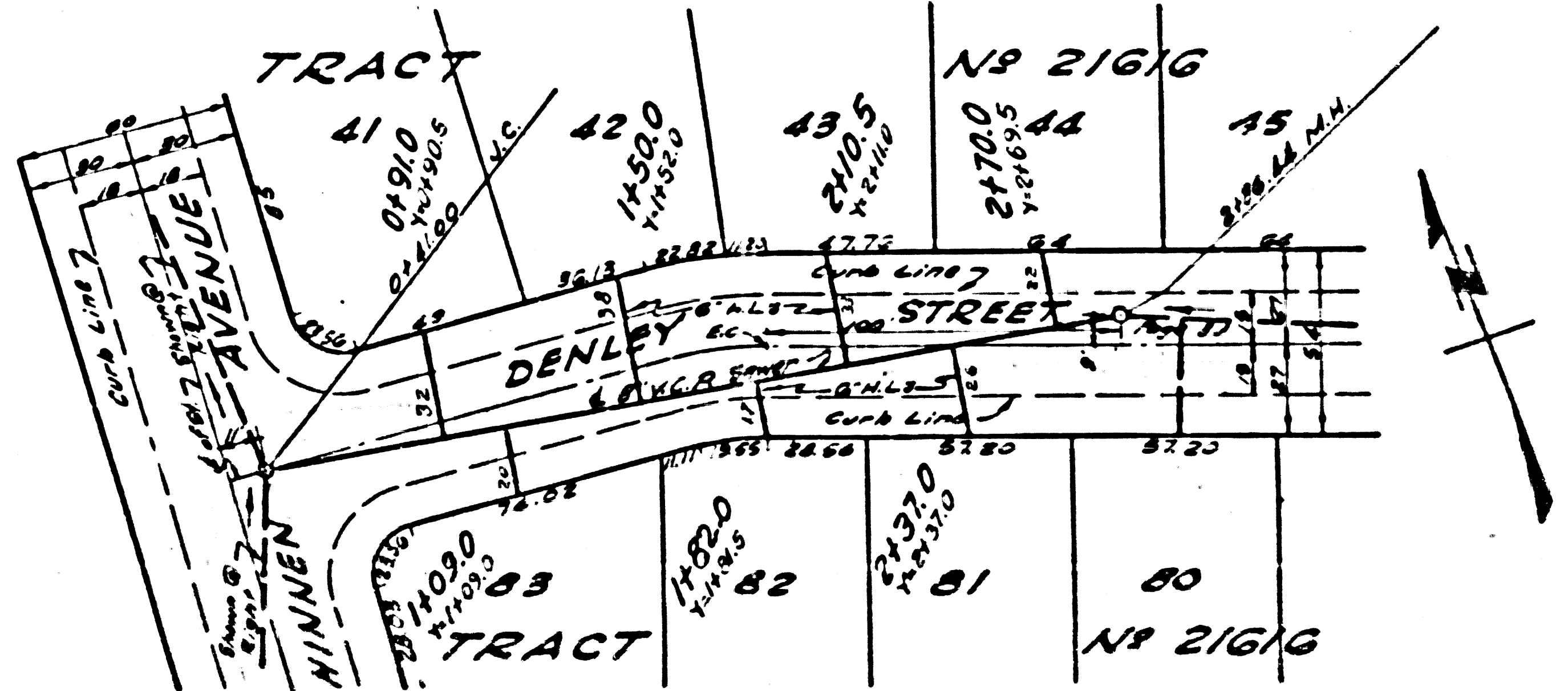
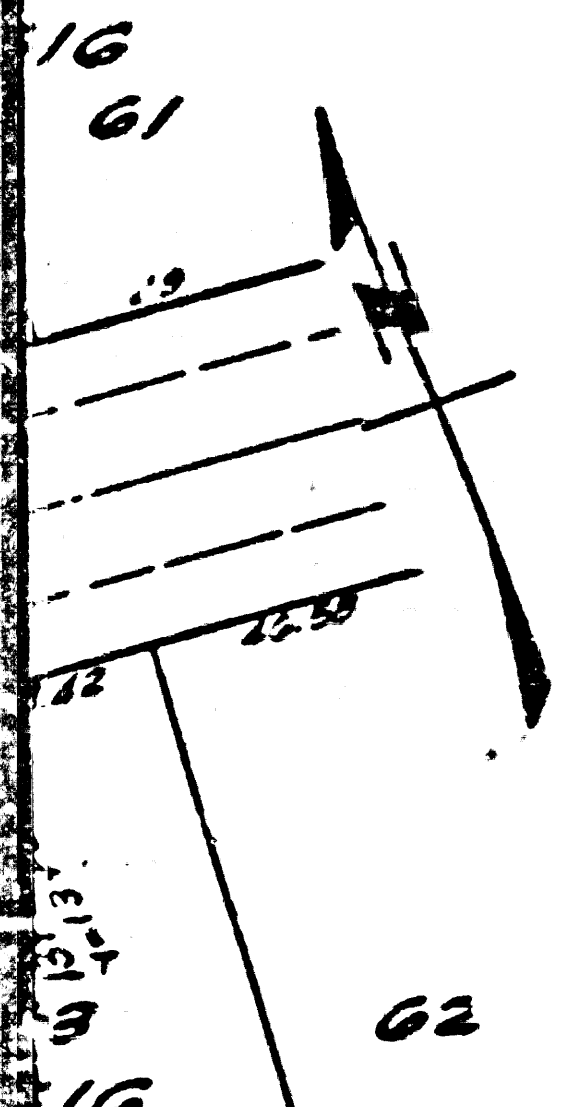
Ⓐ



P.C. 3823
PAGE 3

NO CHARGE FOR
CONNECTIONS

25696



Trim Line

P.C. 3823
PAGE 4

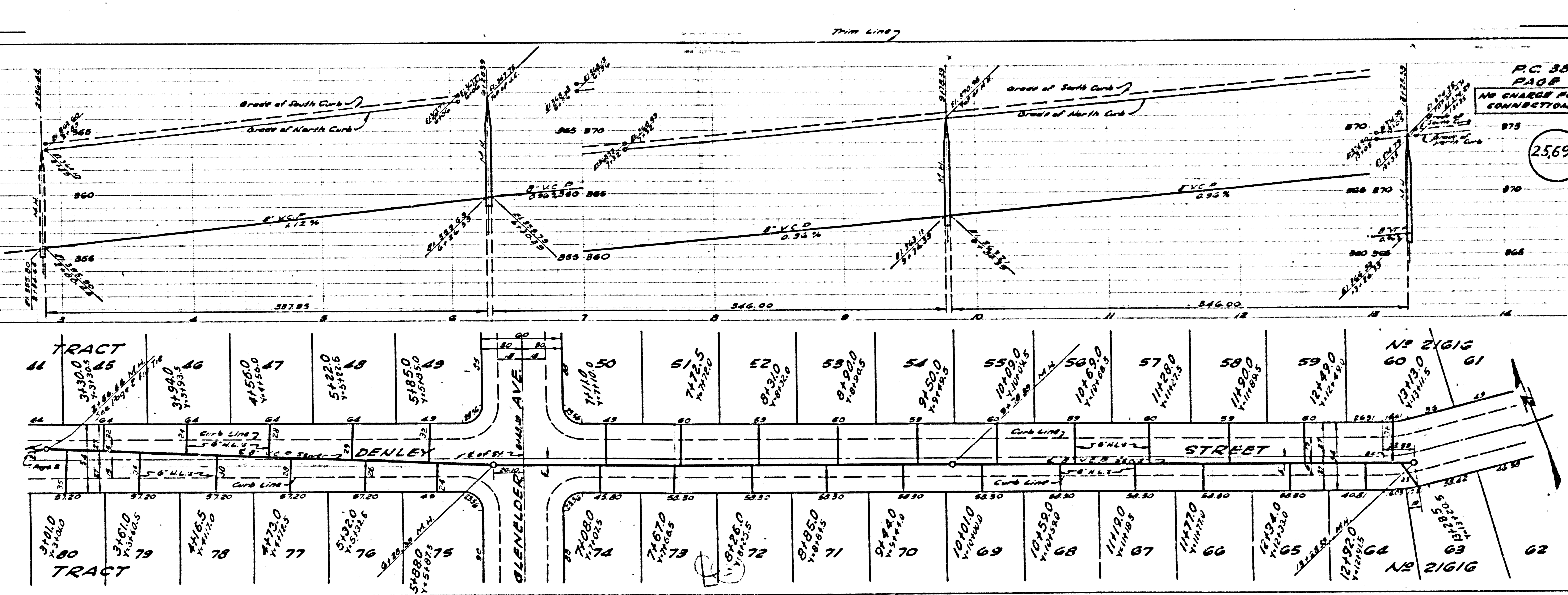
NO CHARGE FOR
CONNECTIONS

25,698

P.C. 3823
PAGE 5

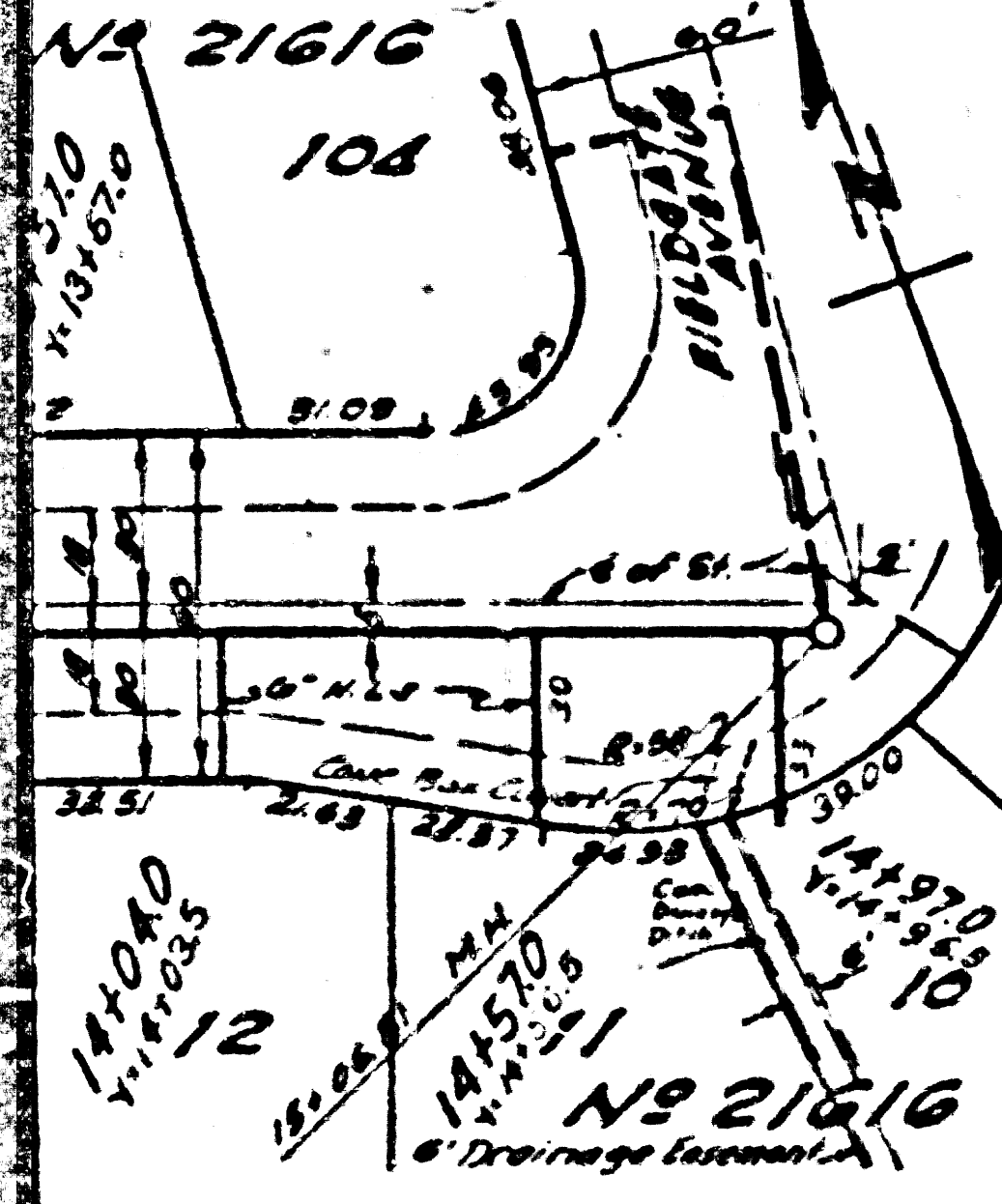
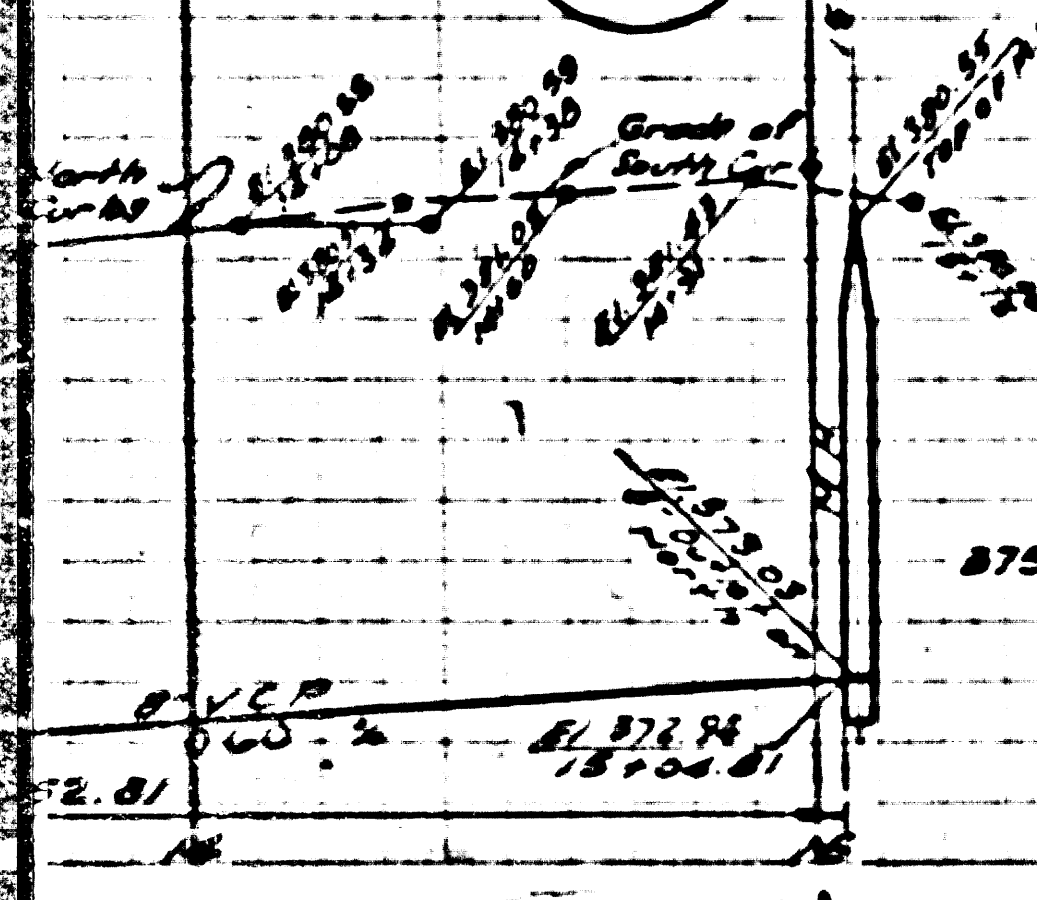
NO CHARGE FOR
CONNECTIONS

25,697



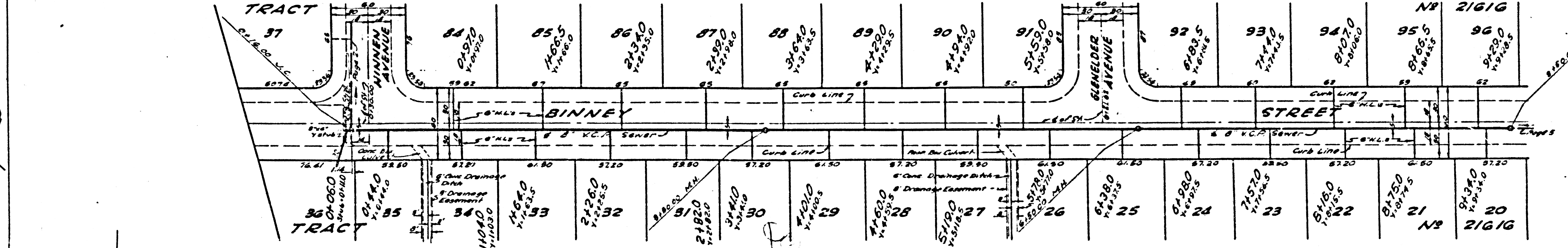
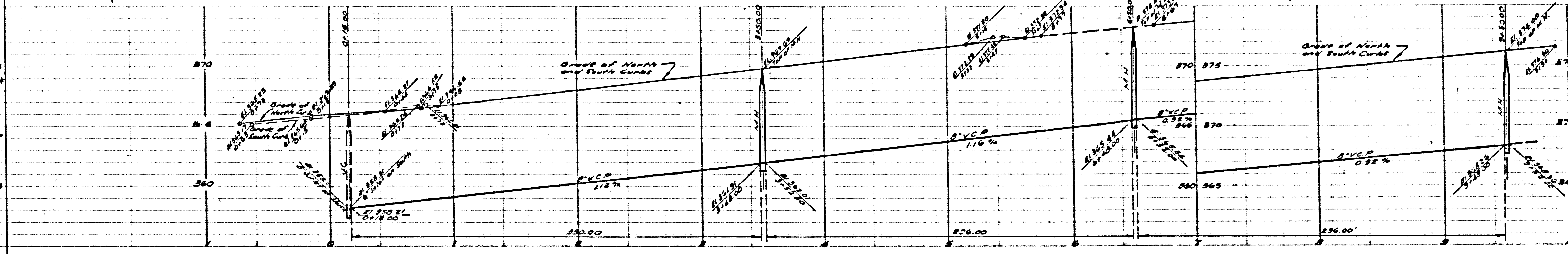
NO CHARGE FOR CONNECTIONS
P.C. 3823
PAGE 5

25,699



NO 21616
P.C. 3823
PAGE 5

NO 21616
P.C. 3823
PAGE 5

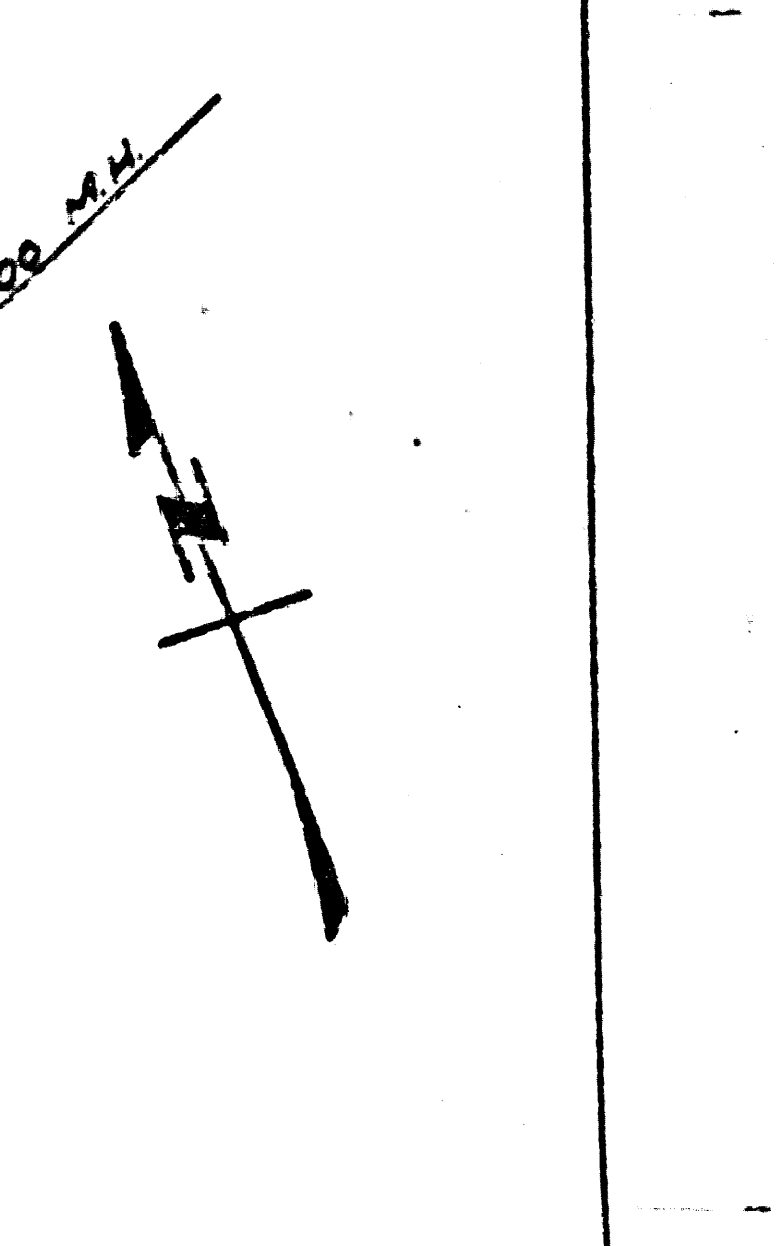
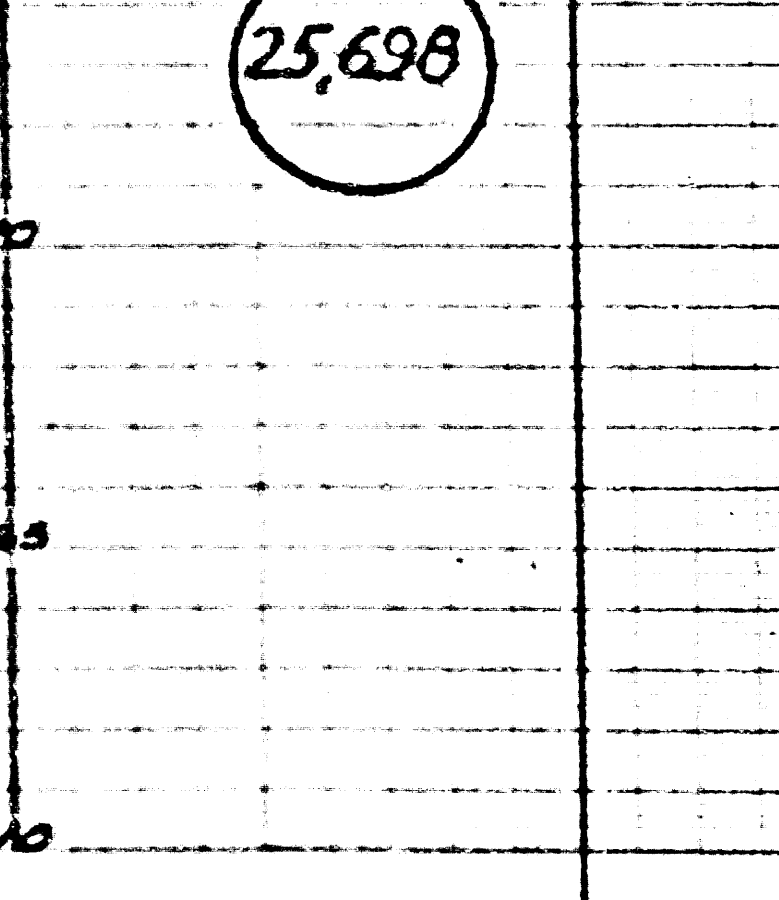


NO 21616
P.C. 3823
PAGE 5

NO 21616
P.C. 3823
PAGE 5

NO CHARGE FOR CONNECTIONS
P.C. 3823
PAGE 6

25,698



NO 21616
P.C. 3823
PAGE 6

NO 21616
P.C. 3823
PAGE 6

