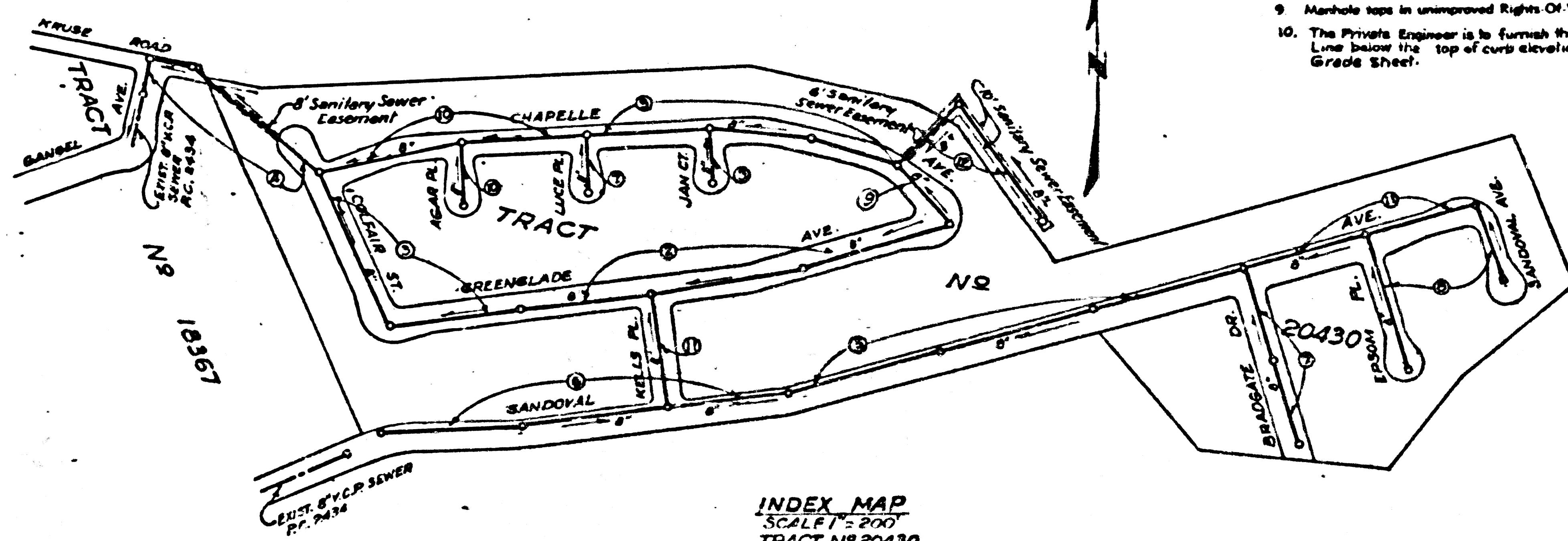


BENCH MARK: SY 2293
 L & T, in Concrete Foundation of S.W. leg. Bureau of
 Power & Light, City of L.A. High Tension Tower at
 N.E. Cor. Kruse Rd. & Durfee, Tower 253'04
 1953 Adj. Elev. 195.679

TABLE

SHEET NO.	PAGES
1	1-4
2	5-8
3	9-12



INDEX MAP
 SCALE 1" = 200'
 TRACT NO 20430
 RC. 3825

WHITTIER BLDG. DIST. NO. 11

- NOTE:**
- Provide stakes on the property lines or property lines produced at right angles to the sewer line at the center line of each manhole.
 - No representative of the County Engineer will survey or layout any portion of the work.
 - The owner or his authorized representative shall furnish the County Engineer with grade sheets and stations for all house laterals and Y branches and shall provide stakes for them at their proper locations with stationing plainly marked. Any change in location shall be requested in writing by the owner or his representative.
 - No revisions shall be made in these plans without the approval of the County Engineer.
 - Use standard manhole frames and covers, S-a-117 Except as Noted.
 - Use standard strength pipe except as noted.
 - Use cement mortar for all vitrified clay pipe joints.
 - Resurface all trench within paved area to meet L.A. County Road Dept. or California State Highway Dept. requirements in accordance with permit.
 - Encase four feet of sewer at points of interference with poles, S-a-119.
 - House laterals to be constructed with inverts at property line, 5 feet below curb grade except as noted.
 - All structures shall be brick sewer structures, S-a-104 Except as Noted.
 - For allowable leakage test, see Formula No. 1, Spec's, Sec. 54.
 - Manhole tops in unimproved Rights Of Way to be 6" above finish grade.
 - The Private Engineer is to furnish the House Lateral depth of the property Line below the top of curb elevation for each House Lateral, on the Grade Sheet.

**CONNECTION CHARGES
 AS INDICATED**
J. Carter 12-2-56

Approved by
INDUSTRIAL WASTE DIVISION
Arthur Parker 12-7-56

PROFILE, ALIGNMENT AND GRADE OF
SANITARY SEWERS
 TO BE CONSTRUCTED IN
TRACT NO. 20430
 PRIVATE CONTRACT NO. 3825
 W. S. 37
 3 SHEETS
 Scale: VERT. 1" = 4'
 HORIZ. 1" = 40'
 DEC. 1955
 Prepared in the offices of
VOORHEES-TRINDLE & NELSON, INC.
 12692 GARDEN GROVE BLVD.
 GARDEN GROVE, CALIF.
C. R. Nelson
 Reg. C. E. No. 2781

NOTE:

Grades to which this improvement is to be constructed are shown on plans and profiles. Grade points for top of curbs, center line of streets, or corner line of lots are shown by circles on profiles. At all points between designated points the grade shall be established so as to conform to a straight line drawn between said designated points.

Elevations are in feet above U.S.C. & G.S. See Level Datum of 1929.

This drawing and the data hereon are hereby made a part of the specifications.

Work shall be constructed according to specifications on file in the office of the County Engineer and shall be prosecuted only in the presence of the County Engineer.

Before work can be started, the contractor must obtain a permit to excavate in County streets from the L.A. County Public Dept., 108 W. 2nd St. and make a deposit with the County Engineer, Room 324, 253 South Broadway, sufficient to cover the cost of construction inspection and record plans.

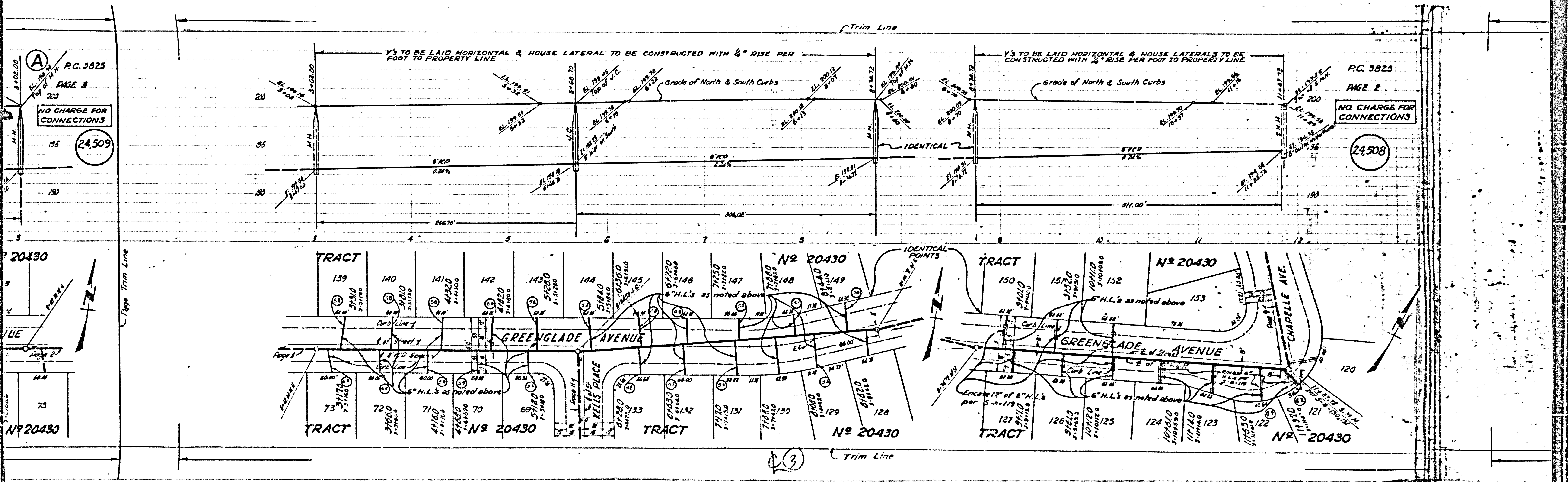
Approval of this plan by the County of Los Angeles does not constitute a representation as to the accuracy of the location of or the existence or non-existence of any underground utility, pipe, or structure within the limits of this project. The same applies to all sheets.

If work is to be done in a State Highway, a permit must be obtained from the State of California, Division of Highways, 120 South Spring Street.

COUNTY OF LOS ANGELES, CALIFORNIA

Approved, John A. Lambie, County Engineer
 Approved, A. M. Rosen
 Chief Insp. CO. SAN. DIST. NO. 2
A. P. Collins
 12-7-56
 Office of County Engineer, Reg. C. E. No. 7840

TRACT NO. 20430
 RC. 3825



P.C. 3825

PAGE 1

NO CHARGE FOR CONNECTIONS

24,509

P.C. 3825

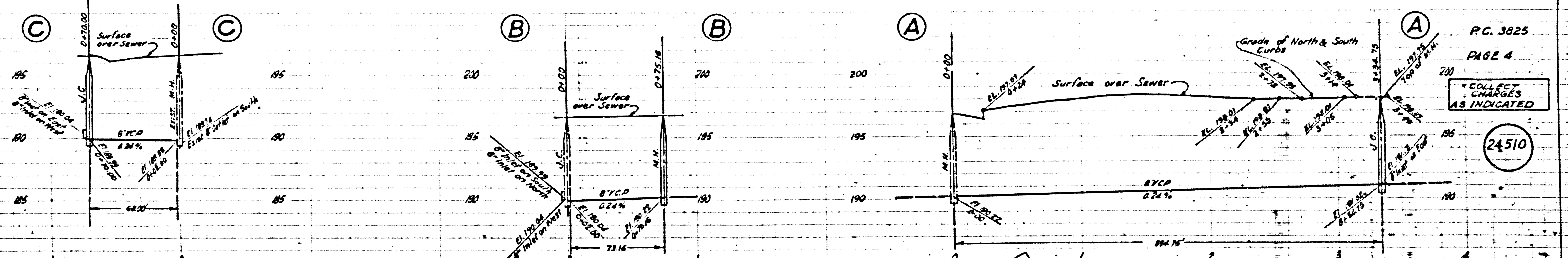
PAGE 2

NO CHARGE FOR CONNECTIONS

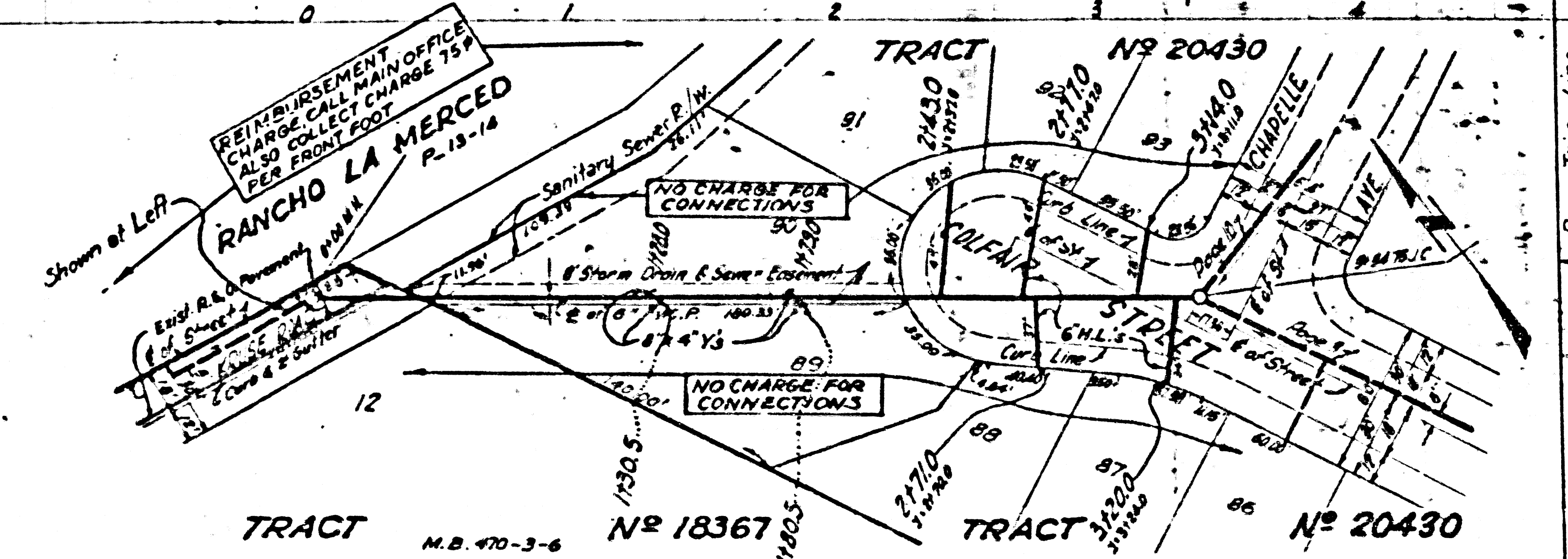
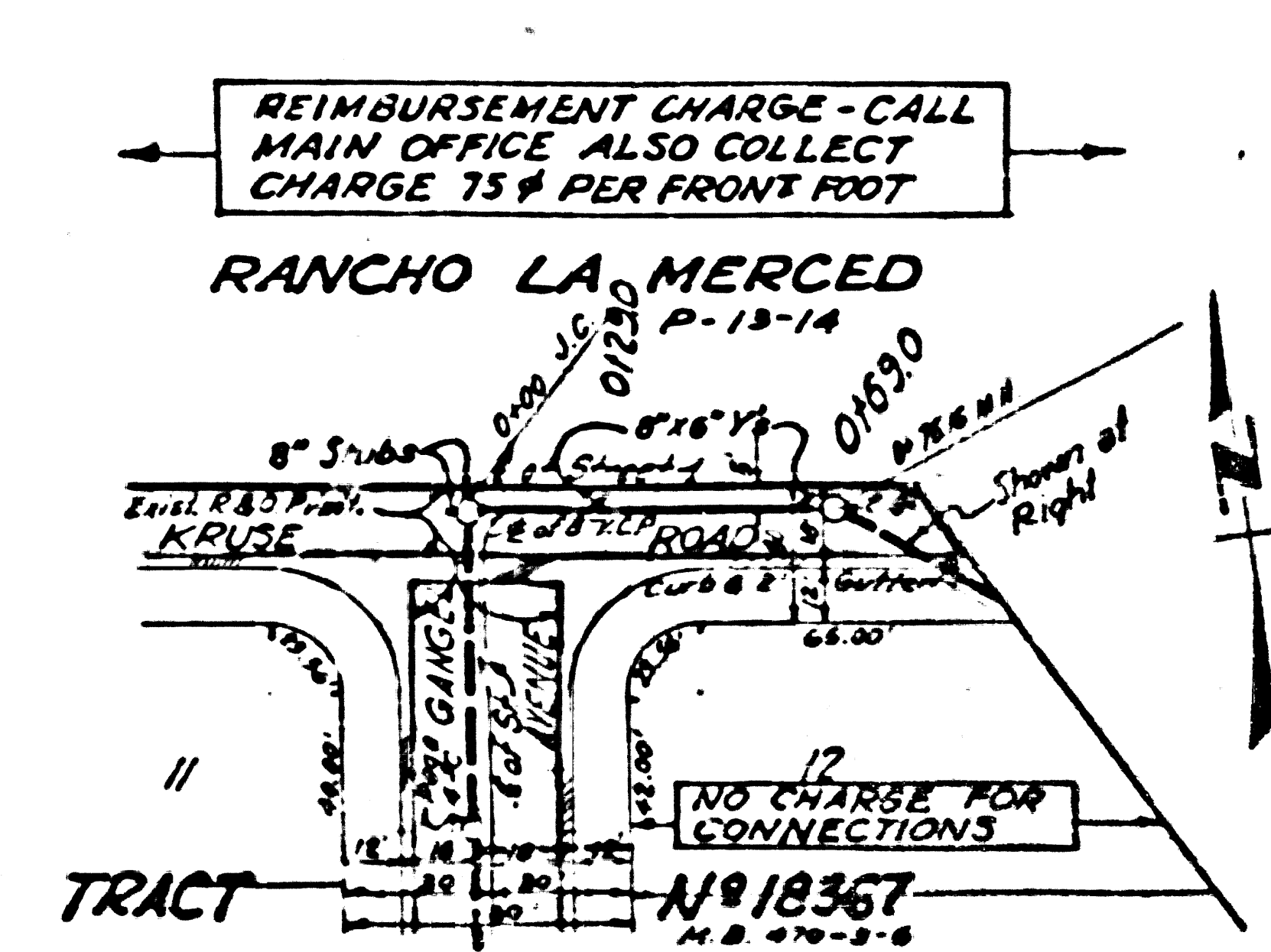
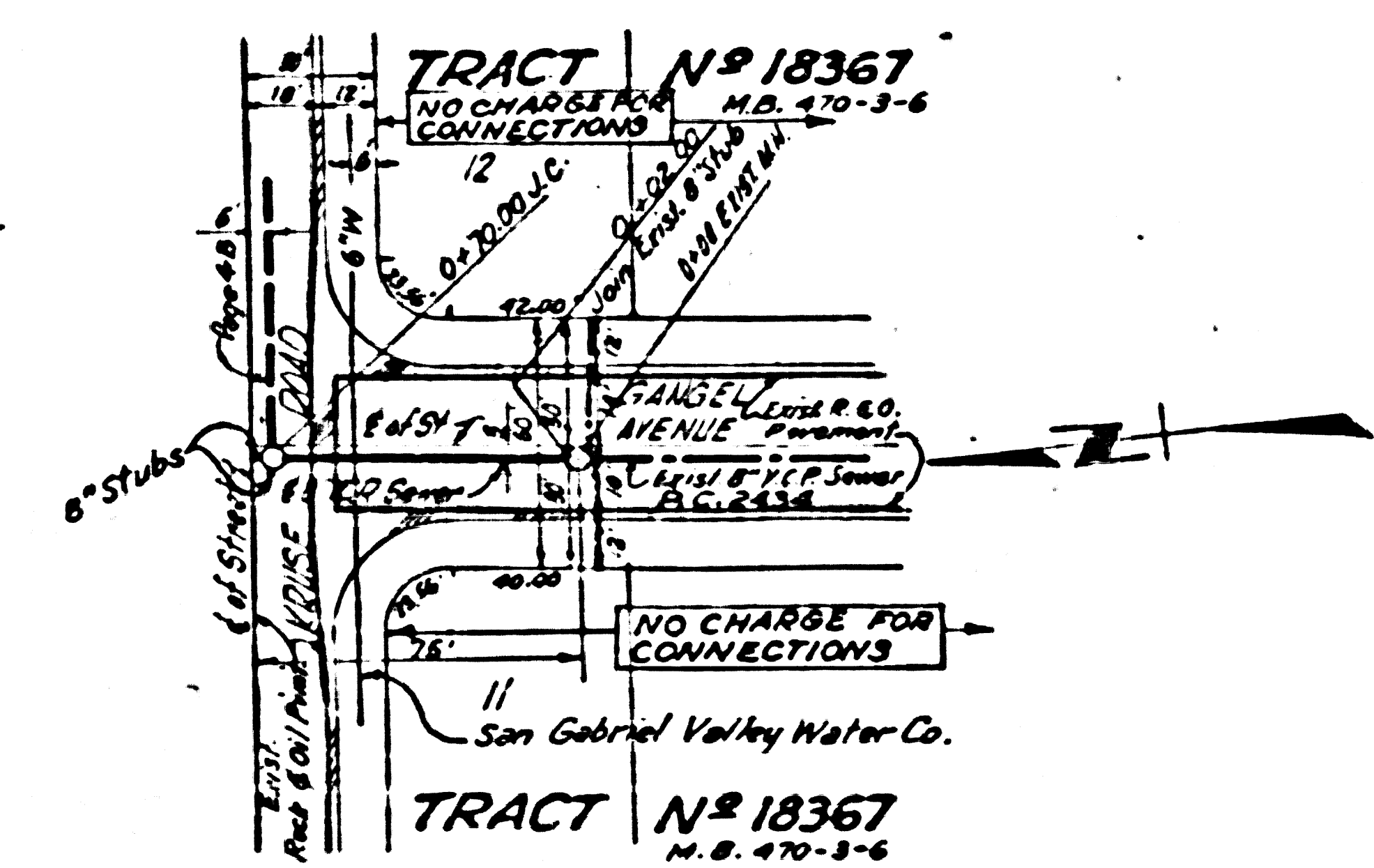
24,508

23

Trim Line



P.C. 3825
PAGE 4
COLLECT CHARGES AS INDICATED
24510



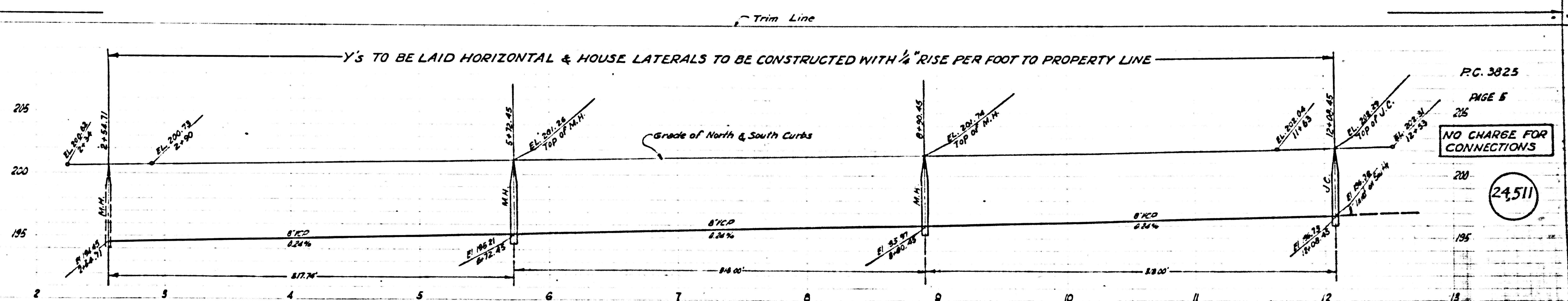
Trim Line

11

Page Trim Line

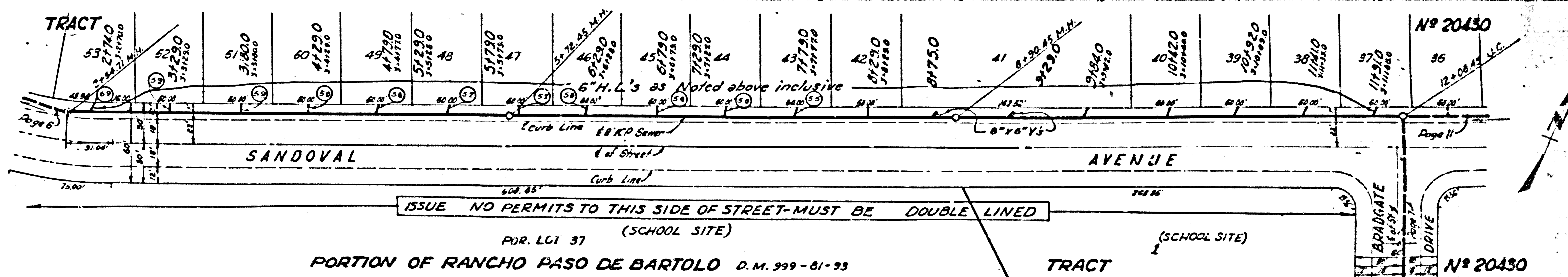
NO CHARGE FOR CONNECTIONS

24,512



P.C. 3825
PAGE 5
225
NO CHARGE FOR CONNECTIONS

24,511



ISSUE NO PERMITS TO THIS SIDE OF STREET-MUST BE DOUBLE LINED

PORTION OF RANCHO PASO DE BARTOLO D.M. 999-81-93

P.C. 3825
PAGE 5
225
NO CHARGE FOR CONNECTIONS

24,511

TRACT NO. 20430
SHEET 2 OF 3 SHEETS
P.C. 3925

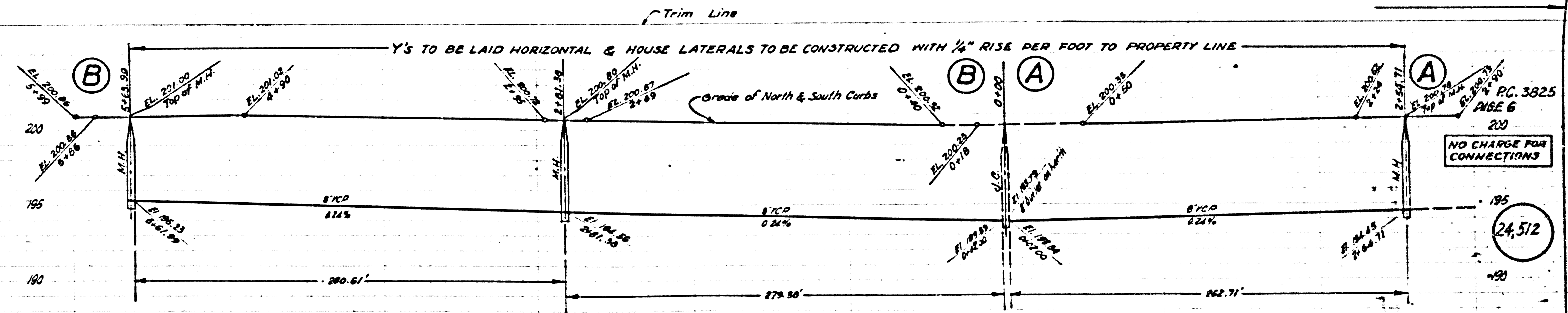
Nº 20430

PC. 3825

PAGE 7

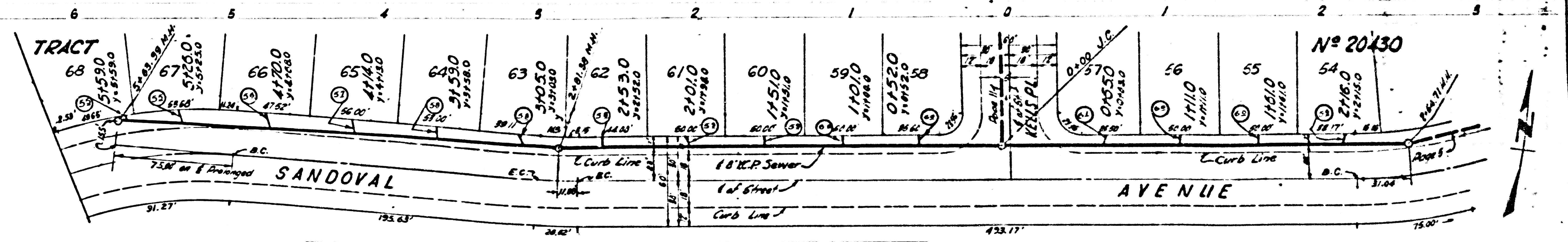
NO CHARGE FOR CONNECTIONS

24,513



NO CHARGE FOR CONNECTIONS

24,512



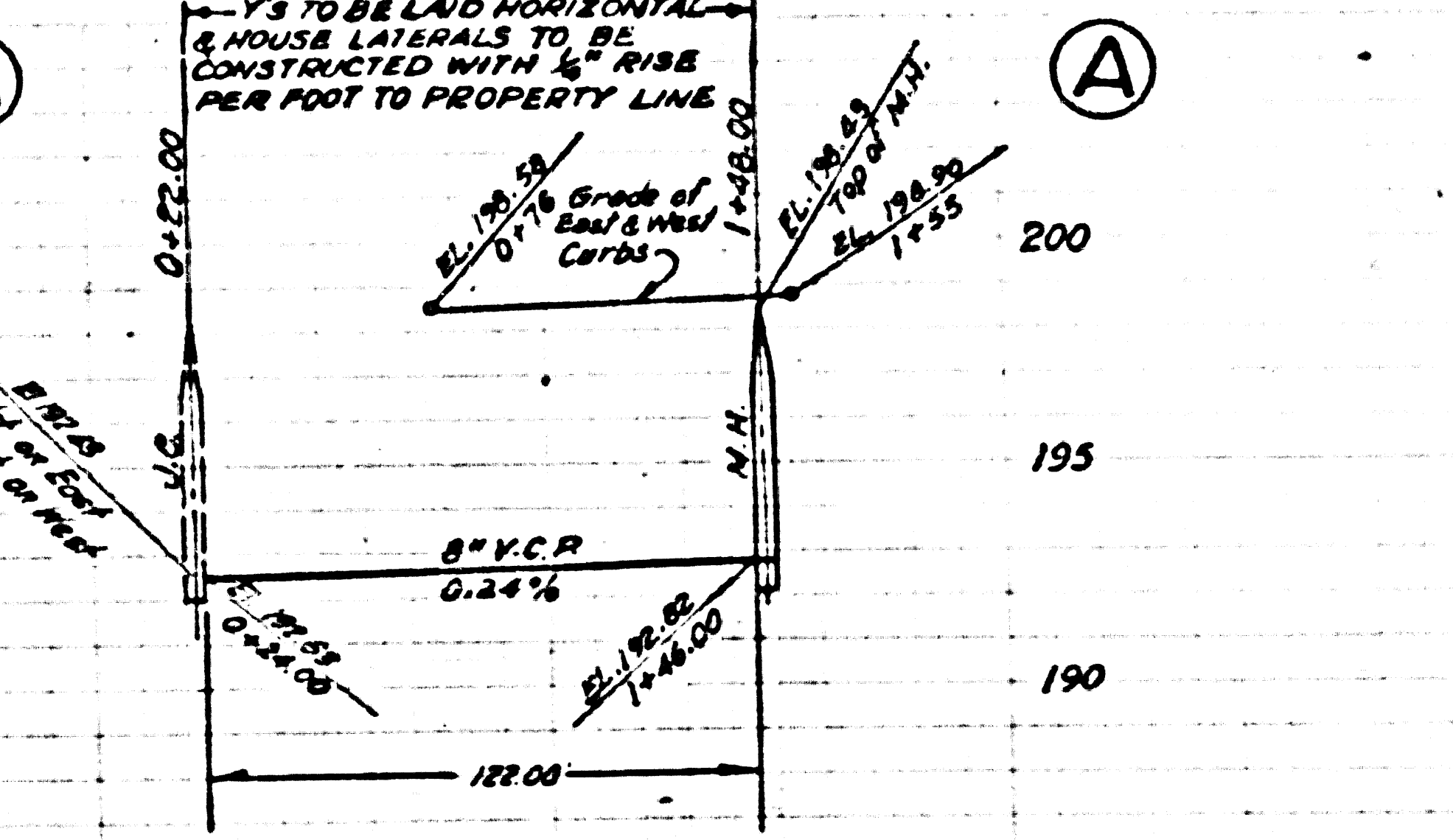
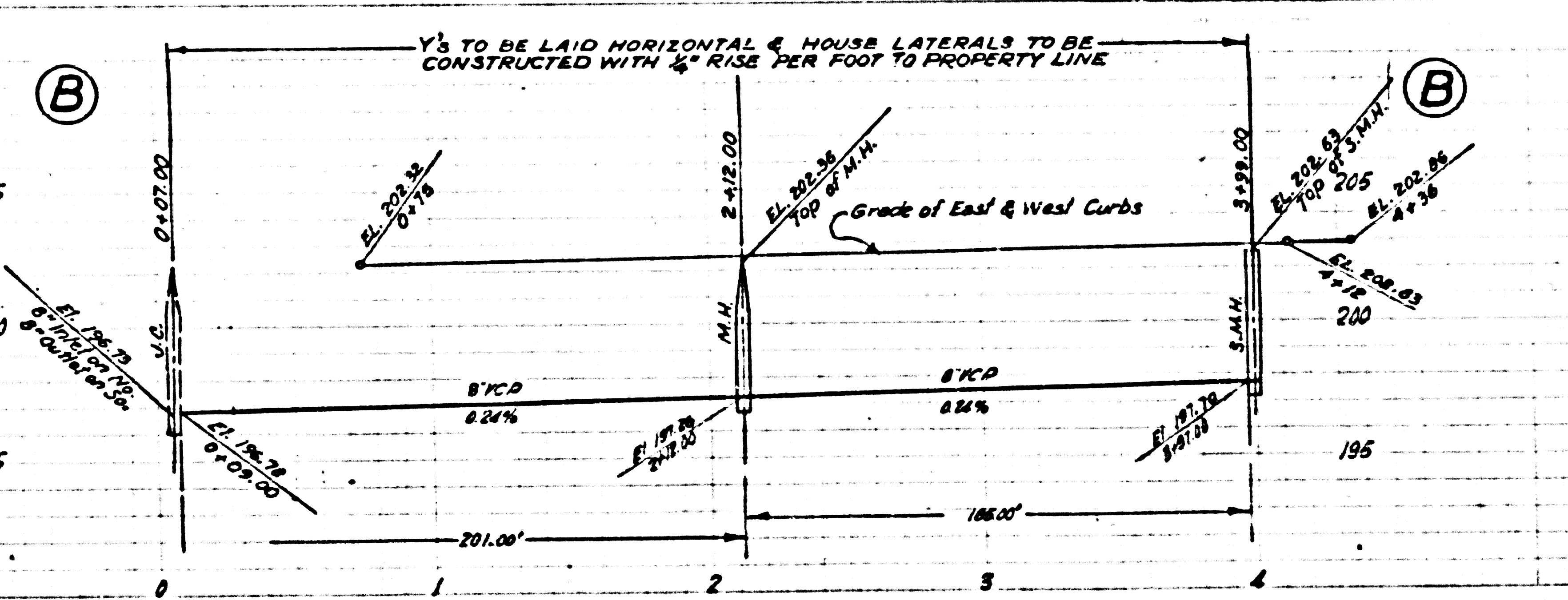
ISSUE NO PERMITS TO THIS SIDE OF STREET-MUST BE DOUBLE LINED

(SCHOOL SITE) POR. LOT 37
PORTION OF RANCHO PASO DE BARTOLO D.M. 999-81-93

13

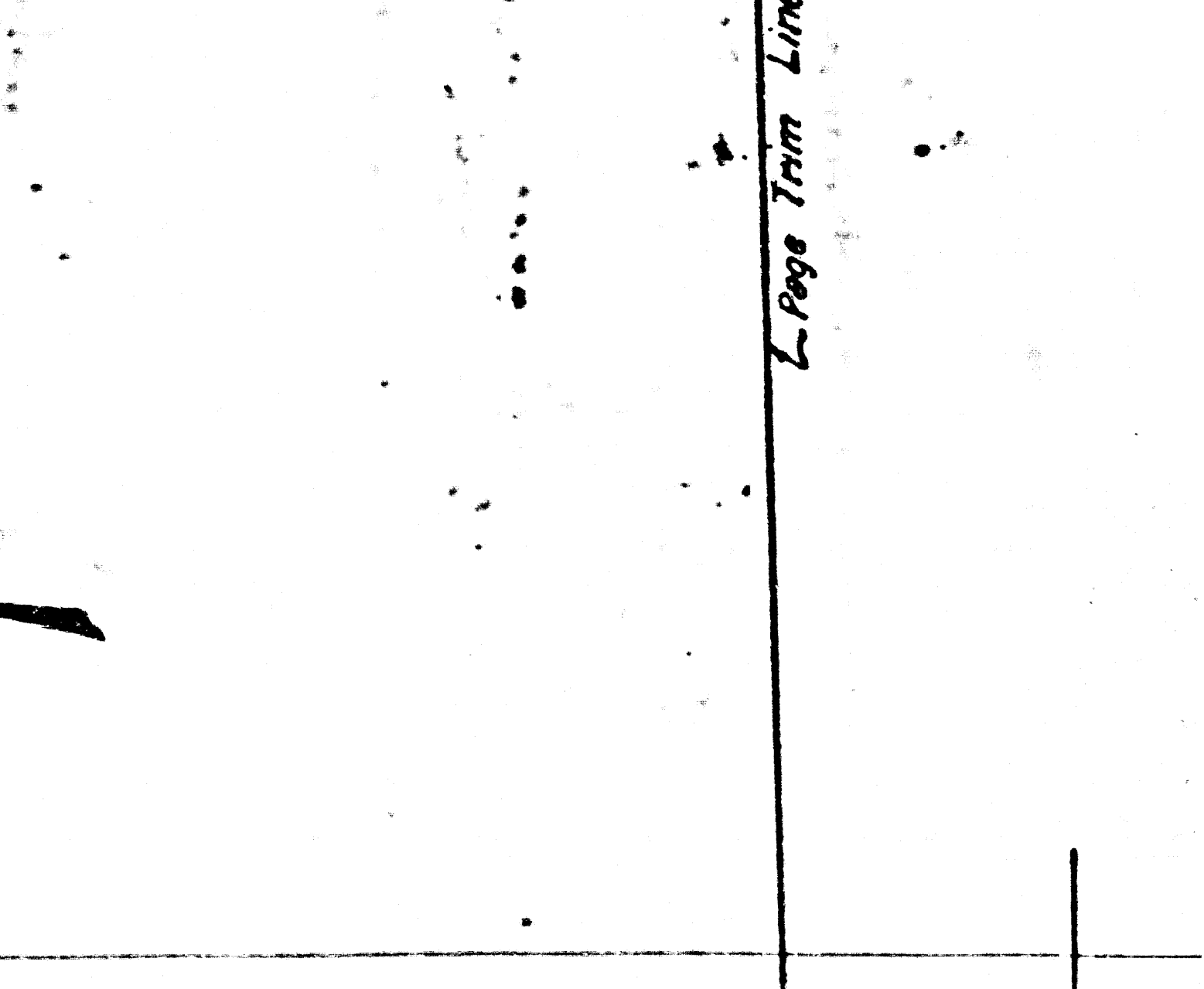
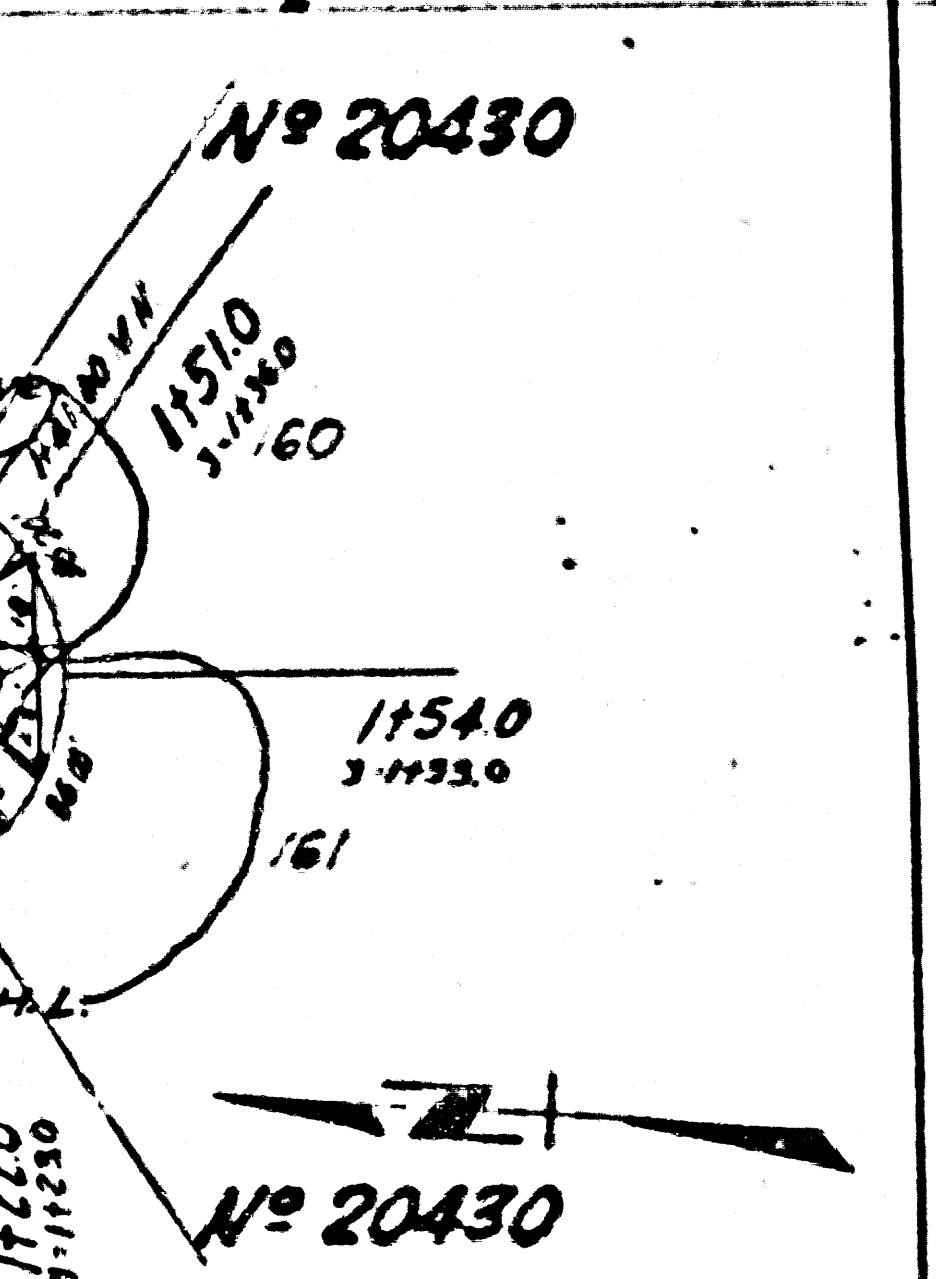
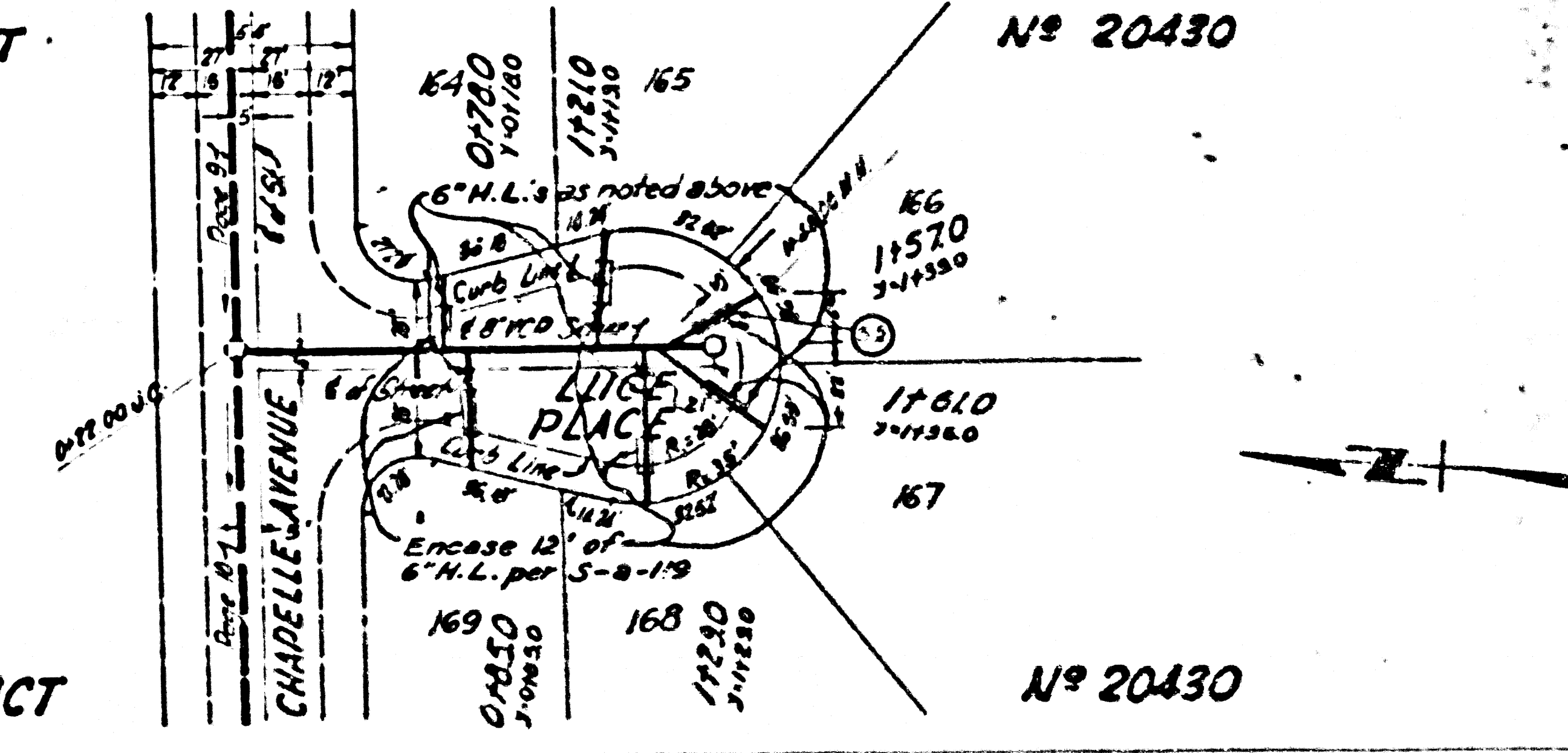
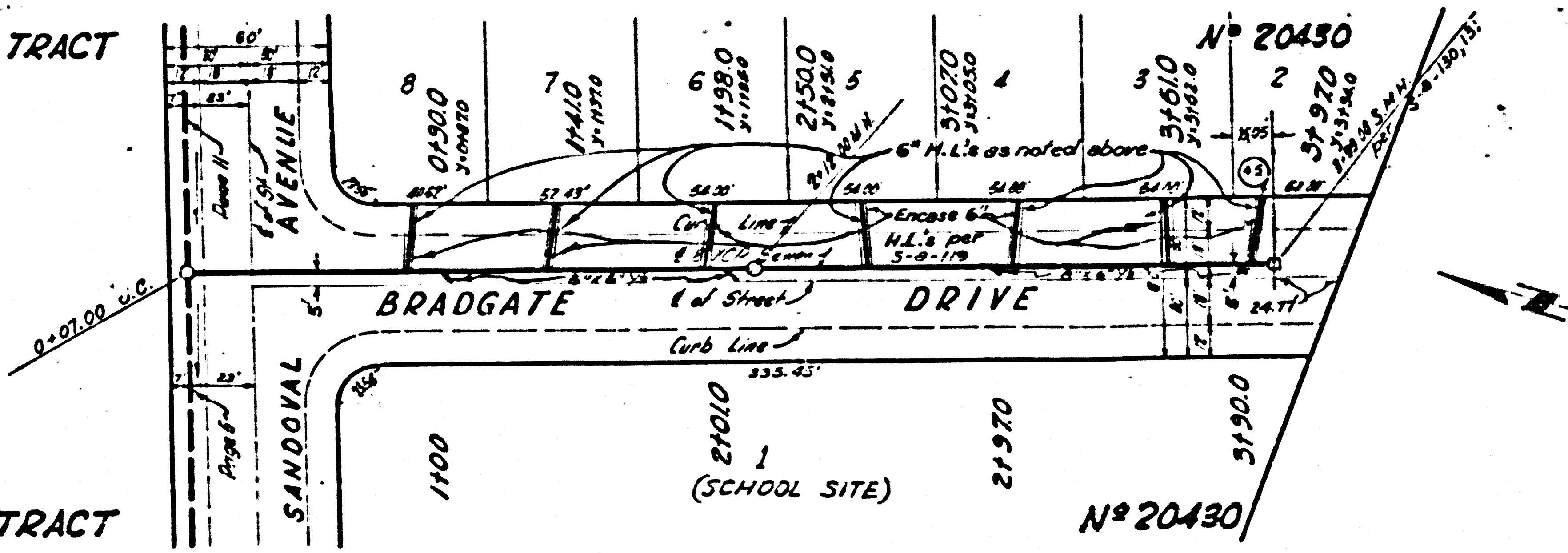
P.C. 3825
PAGE 8
NO CHARGE FOR CONNECTIONS

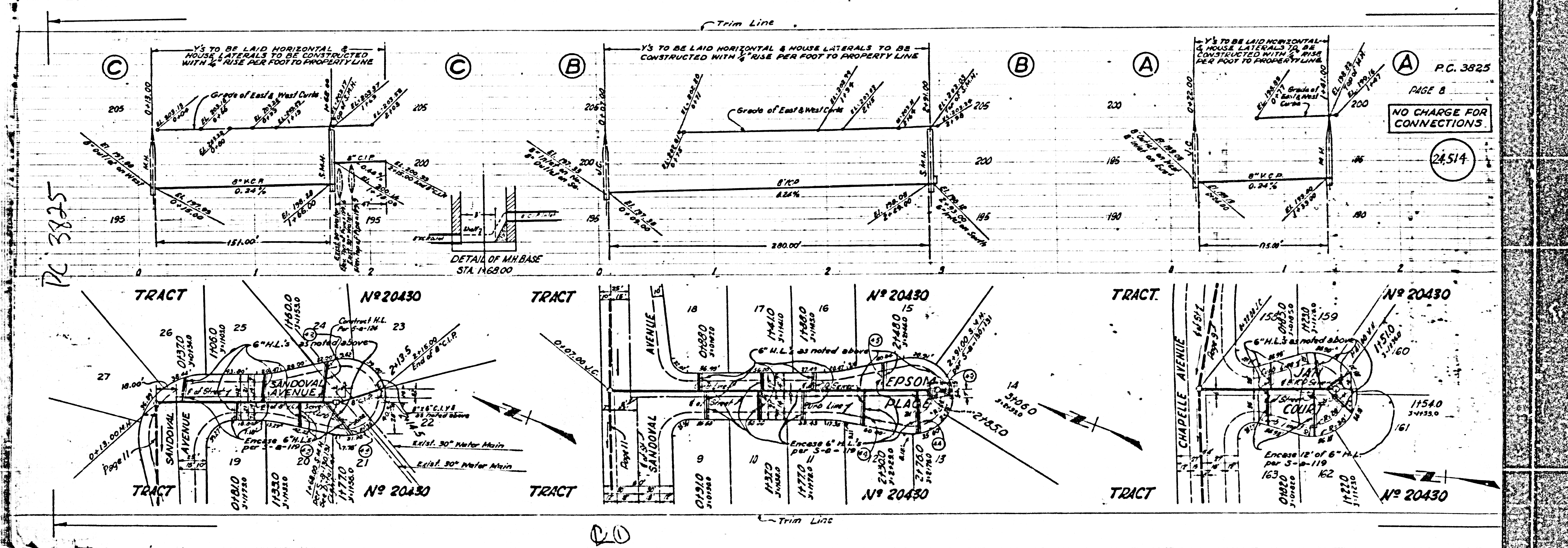
24514



P.C. 3825
PAGE 7
NO CHARGE FOR CONNECTIONS

24513





PC 3825

P.C. 3825

PAGE 8

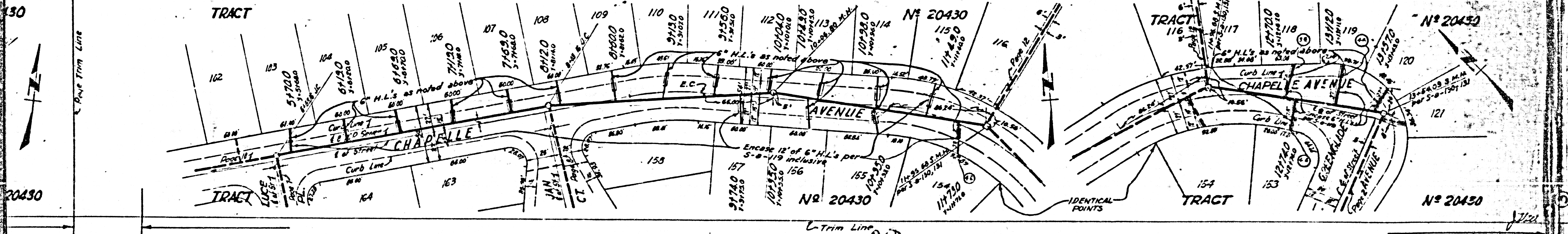
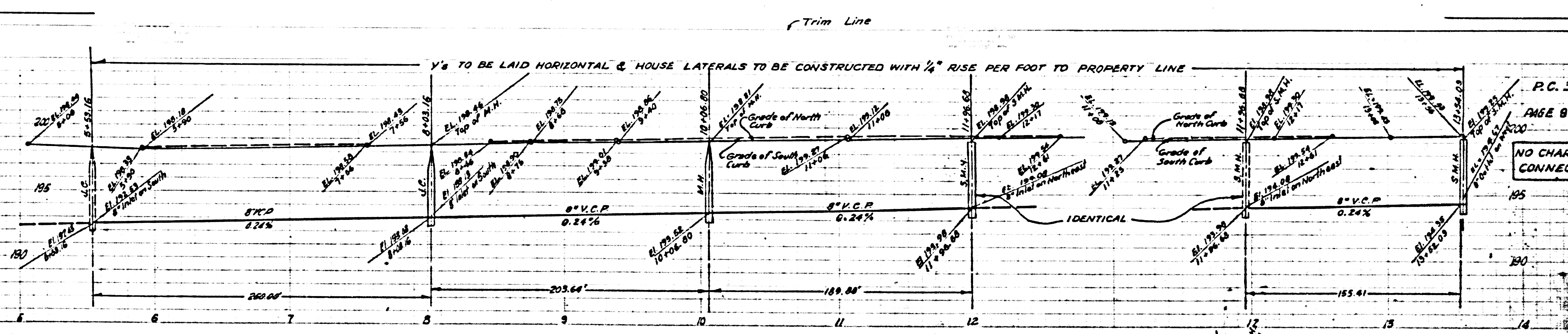
NO CHARGE FOR CONNECTIONS.

24,514

20

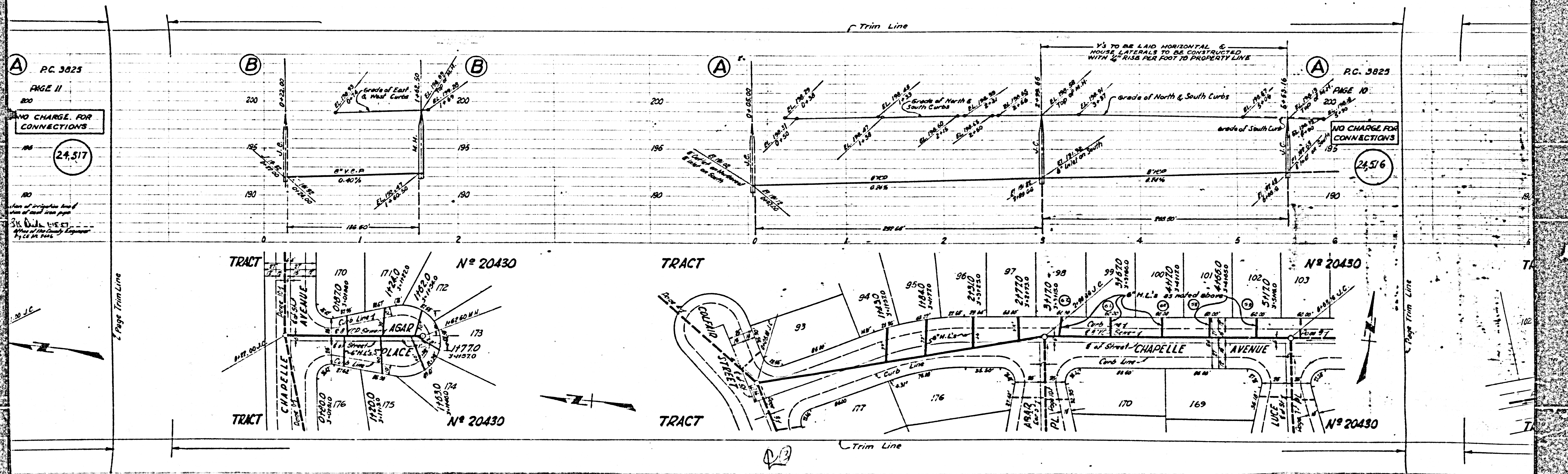
P.C. 3825
SE 10
CHARGE FOR CONNECTIONS
24,516

P.C. 3825
AGE 8
24,515
NO CHARGE FOR CONNECTIONS



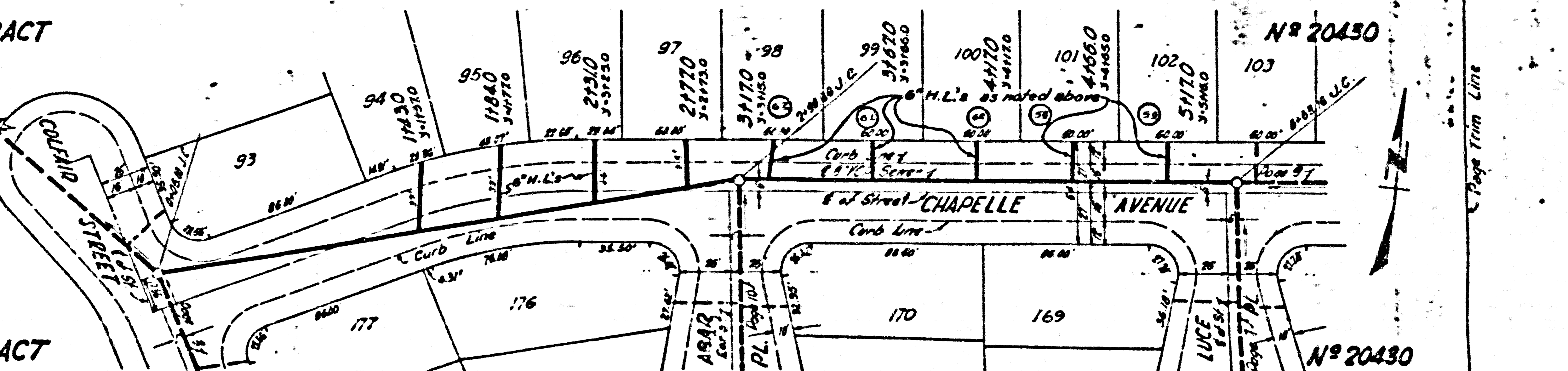
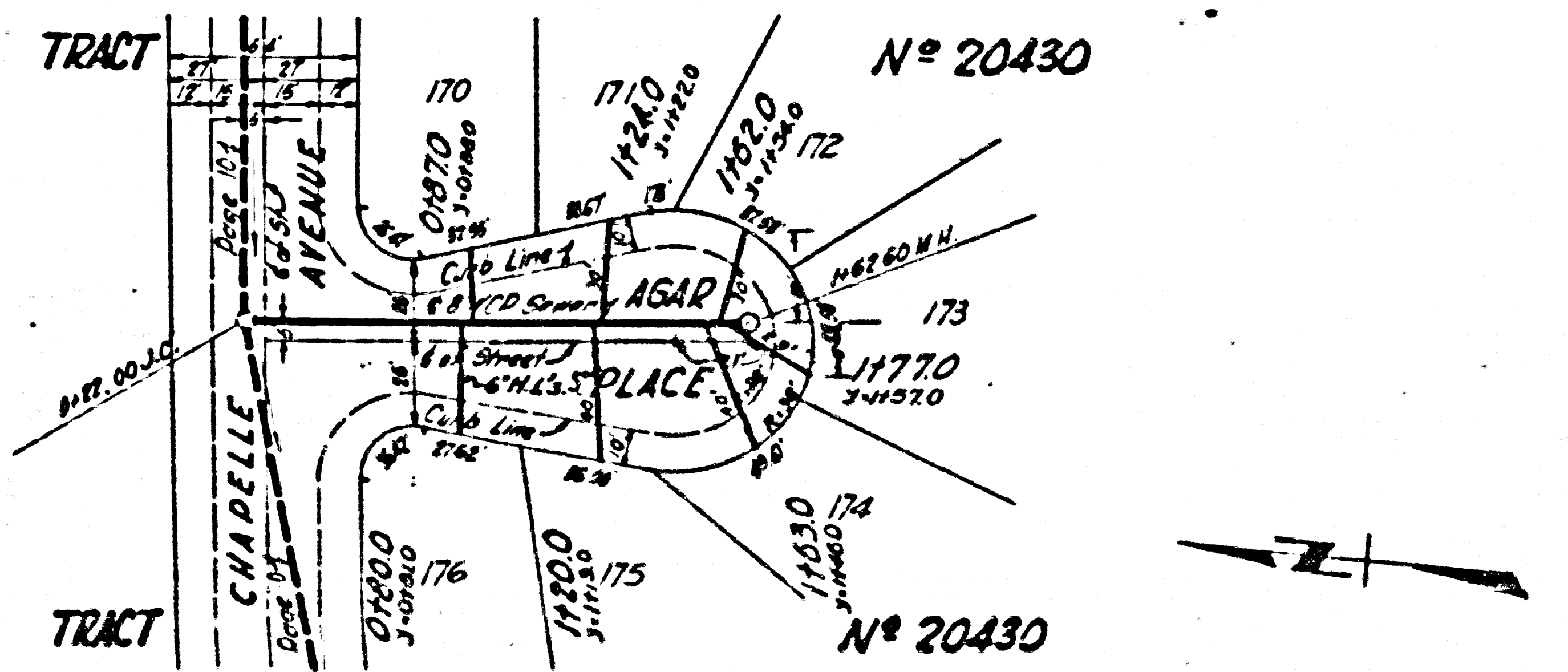
TRACT NO. 2030
SHEET 3 OF 5 SHEETS

TRACT NO. 20430
SHEET 3 OF 5 SHEETS



A P.C. 3825
 PAGE II
 200
 NO CHARGE FOR CONNECTIONS
 24,517
 Date of inspection here of plan of record from page
 S.W. DICKINSON
 City of the County Engineer
 City of St. Paul

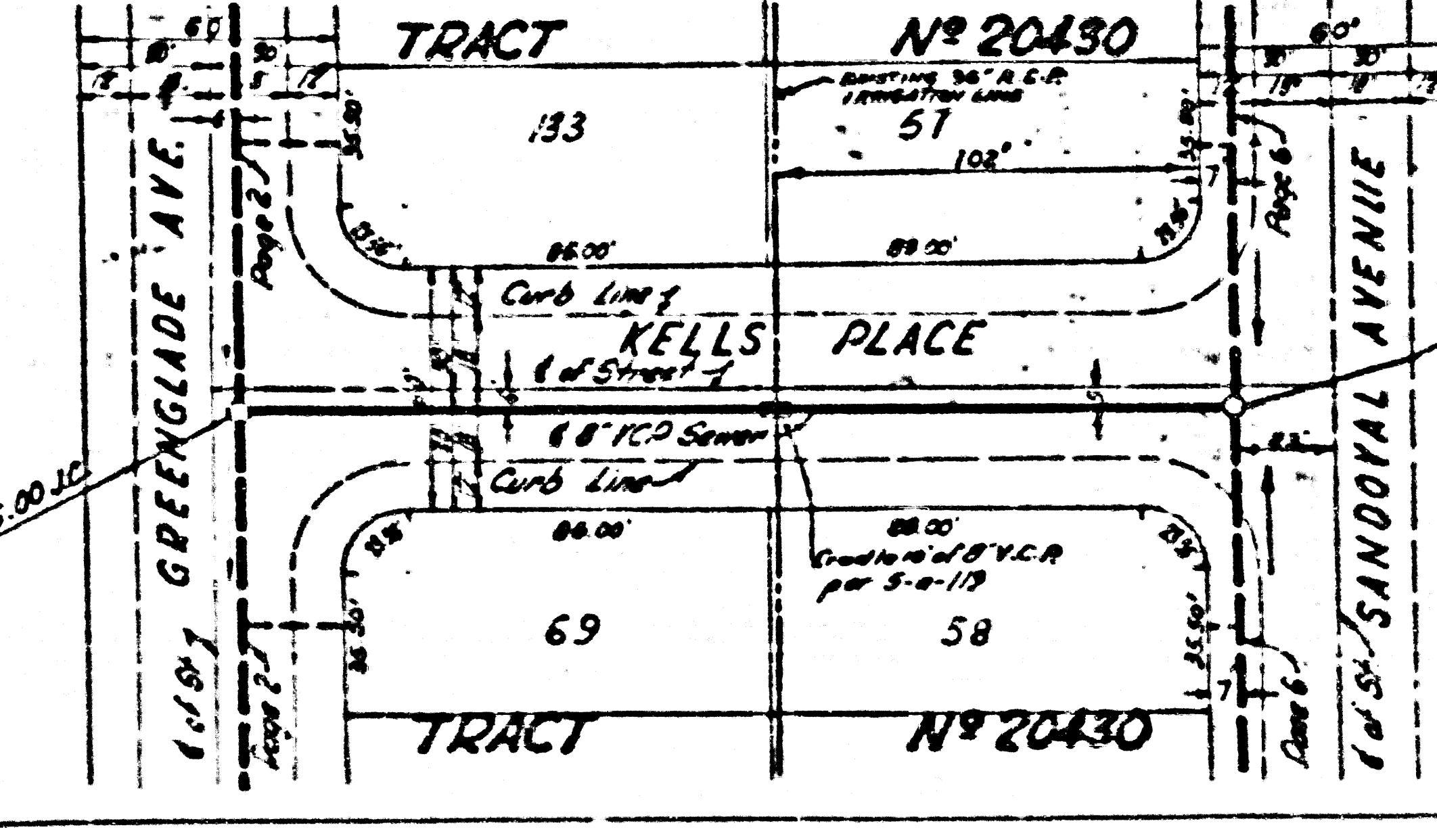
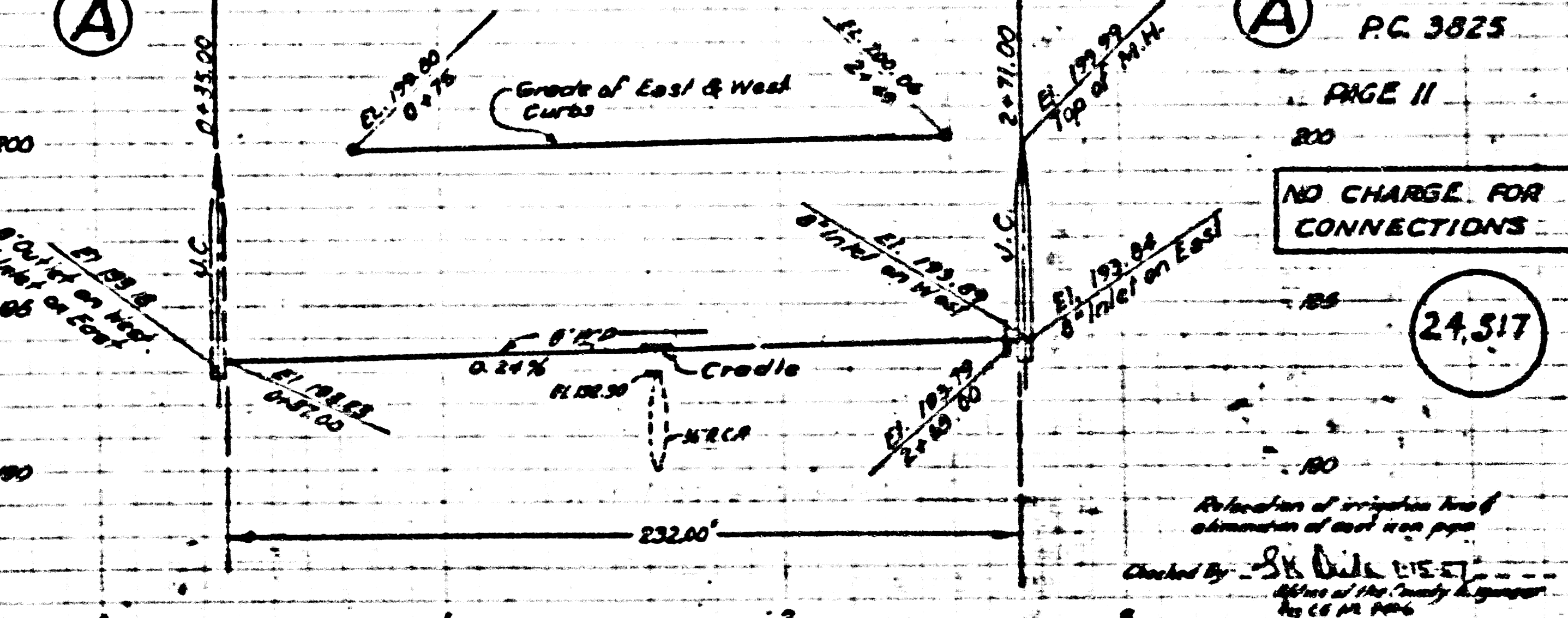
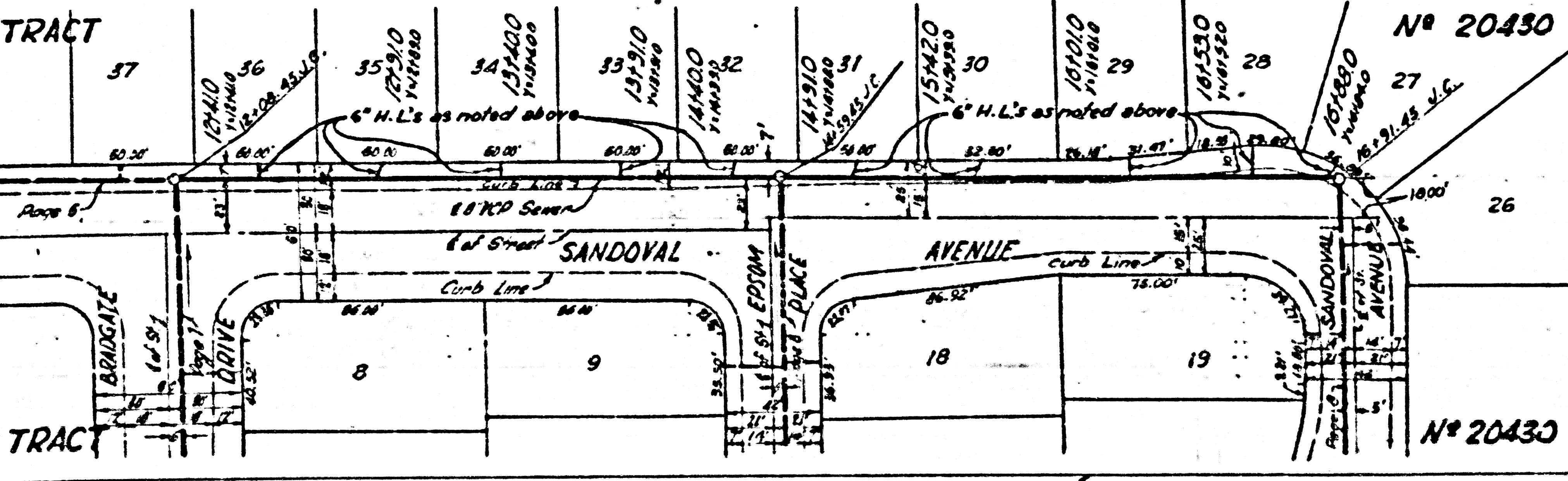
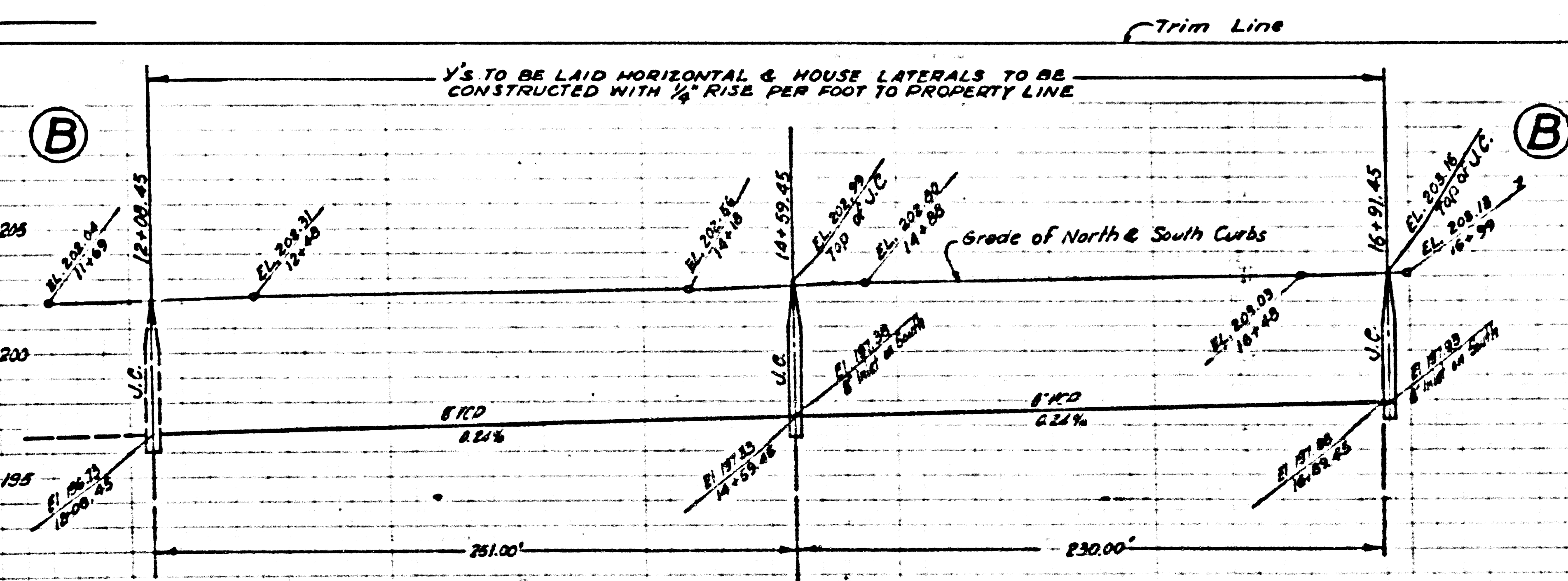
A P.C. 3825
 PAGE 10
 200
 NO CHARGE FOR CONNECTIONS
 24,516



PC. 3825
PAGE 12

COLLECT CHARGES AS INDICATED

24,518



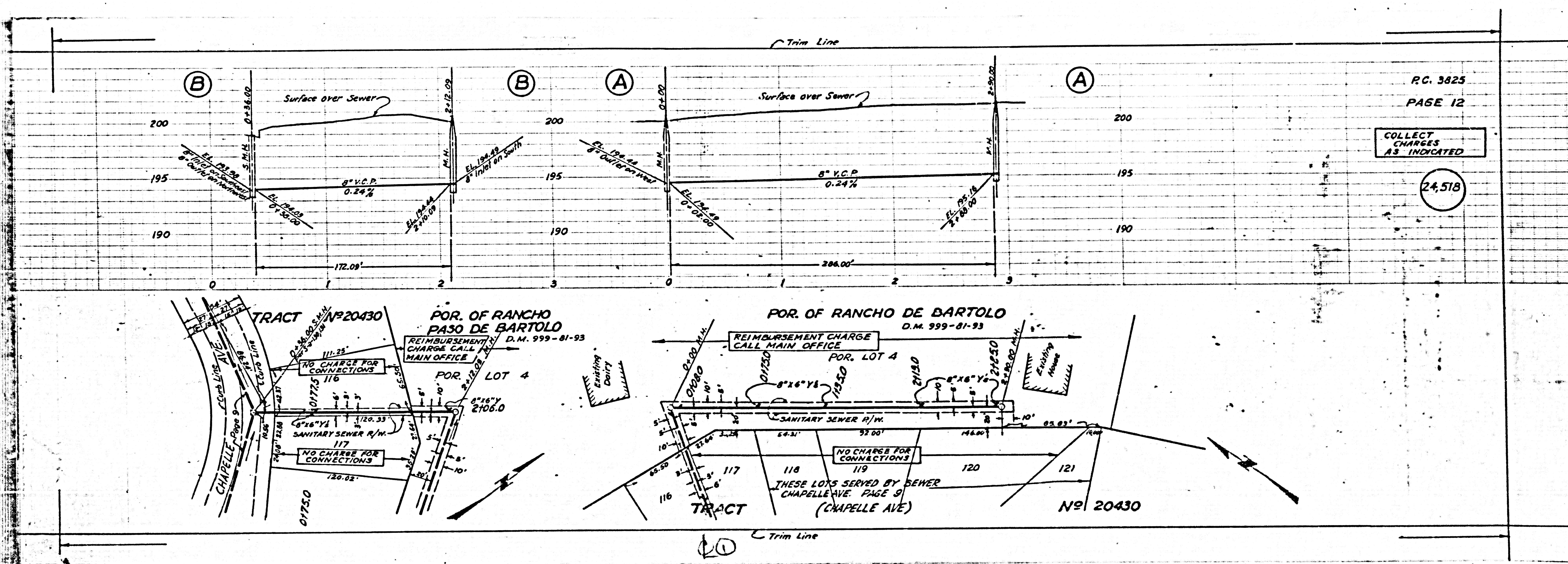
PC. 3825
PAGE 11

NO CHARGE FOR CONNECTIONS

24,517

Checked by: SK. DICKINSON
District Engineer
City of Los Angeles

Page Trim Line



PC. 3825
PAGE 12

COLLECT CHARGES AS INDICATED

24,518