

P. 3830
PAGE 2

CHARGE FOR
CONNECTIONS

5,362

Trim Line

Trim Line

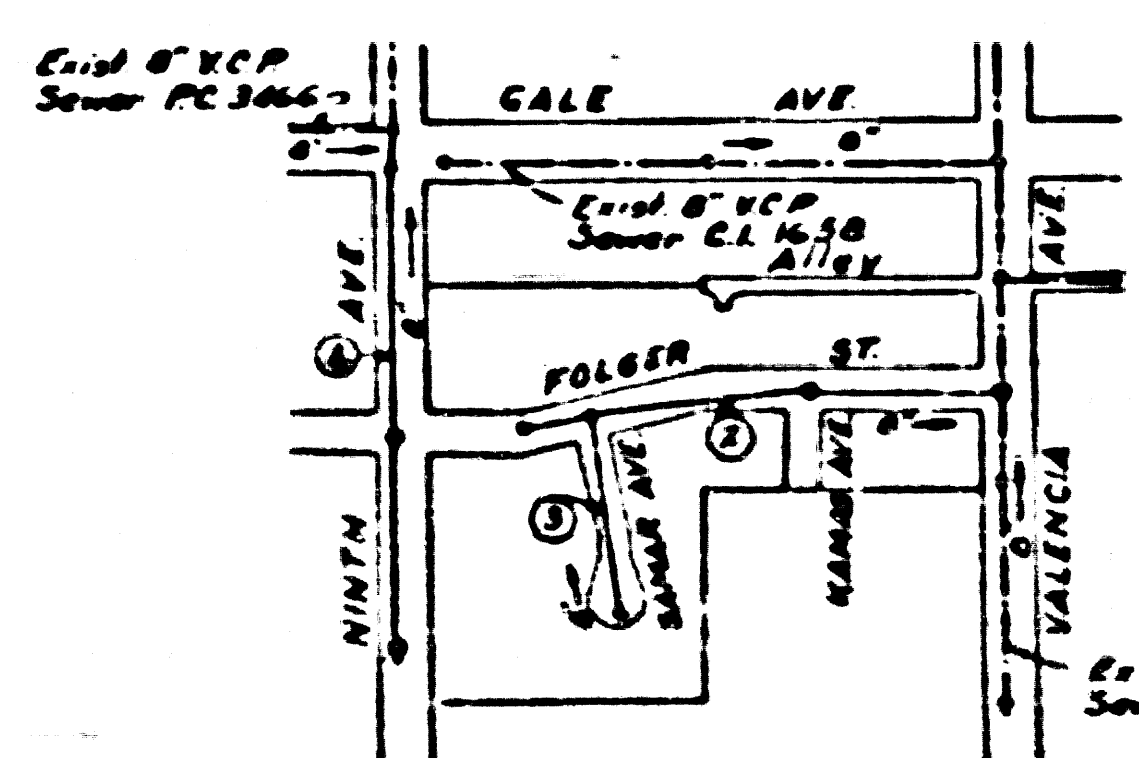
BM-56 1342, L & T, Corner Cone
Headwall of Culvert, S.W. Corner of
Ninth Ave. & Gale Ave - Elev 332.99

INDEX TABLE	
SHEETS	PAGES
1	4

CONNECTION
CHARGES AS
INDICATED

PUENTE BLDG. DIST. NO 2

- NOTE:**
Provide stakes on the property lines or property lines produced at right angles to the sewer line at the corner line of each manhole.
No representative of the County Engineer will survey or layout any portion of the work.
The owner or his authorized representative shall furnish the County Engineer with grade sheets and stations for all house laterals and Y branches and shall provide stakes for them at their proper locations with stationing plainly marked. Any change in location shall be requested in writing by the owner or his representative.
No revisions shall be made on these plans without the approval of the County Engineer.
1. Use standard manhole frames and covers, S-a-117
 2. Use standard strength pipe except as noted.
 3. Use cement mortar for all vitrified clay pipe joints.
 4. Resurface all trench within paved area to meet L.A. County Road Dept. or California State Highway Dept. requirements in accordance with permit.
 5. Encase four feet of sewer at points of interference with poles, S-a-178, Class III
 6. Manhole laterals to be constructed with inverts at property line, 6 feet below curb grade except as noted.
 7. All structures shall be brick sewer structures, S-a-104.
 8. For allowable leakage test, use Formula No. 1, Spec's, Sec. 54.
 9. The Private Sewer shall furnish the house lateral depth at the property line, below the ground-surface elevation for each house lateral, on this grade sheet.



NOTE:
THE CONTRACTOR SHALL NOTIFY THE CONSTRUCTION AND STORM DRAIN DIVISION BY TELEPHONE, MADISON 9-4747, EXT. 362, AT LEAST 24 HOURS BEFORE STARTING ANY WORK UNDER THIS CONTRACT.

Revision: Added Road Easements
on Somar Ave. & Komas Ave.
REVISION APPROVED:
10-31-57
OFFICE OF COUNTY ENGINEER, 120 S. SPRING STREET

INDEX MAP
SCALE 1"=300'
TRACT NO 19878
PC. 3830

PC. 3830
PAGE 1
PROFILE, ALIGNMENT AND GRADE OF
SANITARY SEWERS
TO BE CONSTRUCTED IN
TRACT NO 19878

25,361

PRIVATE CONTRACT NO. 3830
W. S. 37
1 SHEET
Scale: HORIZ. 1"=40' VERT. 1"=4'
DECEMBER 1955
PREPARED BY THE OFFICES OF
CONLEY ENGINEERING CO.
Hugh G. Conley
No. 5466

NOTE:
Grades to which it is proposed to be constructed are shown on plans and profiles. Grade points for top of curbs, center line of streets, or center line of alleys are shown by crosses on profiles. At all points between designated points the grade shall be established so as to conform to a straight line drawn between said designated points.
Elevations are in feet above U.S.C. & G.S. mean sea level datum of 1929.
This drawing and the data herein are hereby made a part of the specifications.
Work shall be constructed according to specifications on file in the office of the County Engineer and shall be prosecuted only in the presence of the County Engineer.
Before work can be started, the contractor must obtain a permit to excavate in County streets from the L.A. County Road Dept., 108 W. 2nd St. and make a deposit with the County Engineer, Room 314, 253 South Broadway, sufficient to cover the cost of construction inspection and report thereon.
Approval of this plan by the County of Los Angeles does not constitute a representation as to the accuracy of the location of or the existence or non-existence of any underground utility, pipe, or structure within the limits of this project. This note applies to all sheets.
If work is to be done on a State Highway, a permit must be obtained from the State of California, Division of Highways, 120 South Spring Street.

COUNTY OF LOS ANGELES, CALIFORNIA
Approved, John A. Lambie, County Engineer
Approved, A. M. Ruff
Checked by: J. K. Ovide 10-4-57
Office of County Engineer, 120 S. Spring Street

TRACT NO 19878

PC 3830
PAGE 1

Trim Line

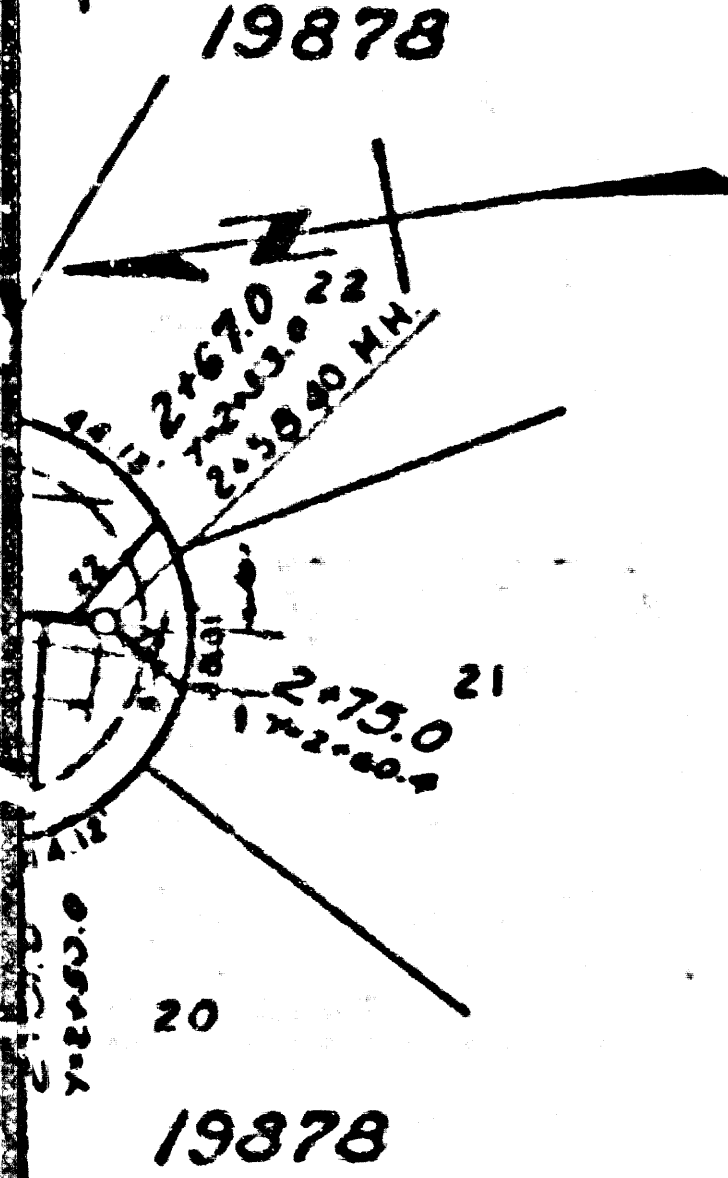
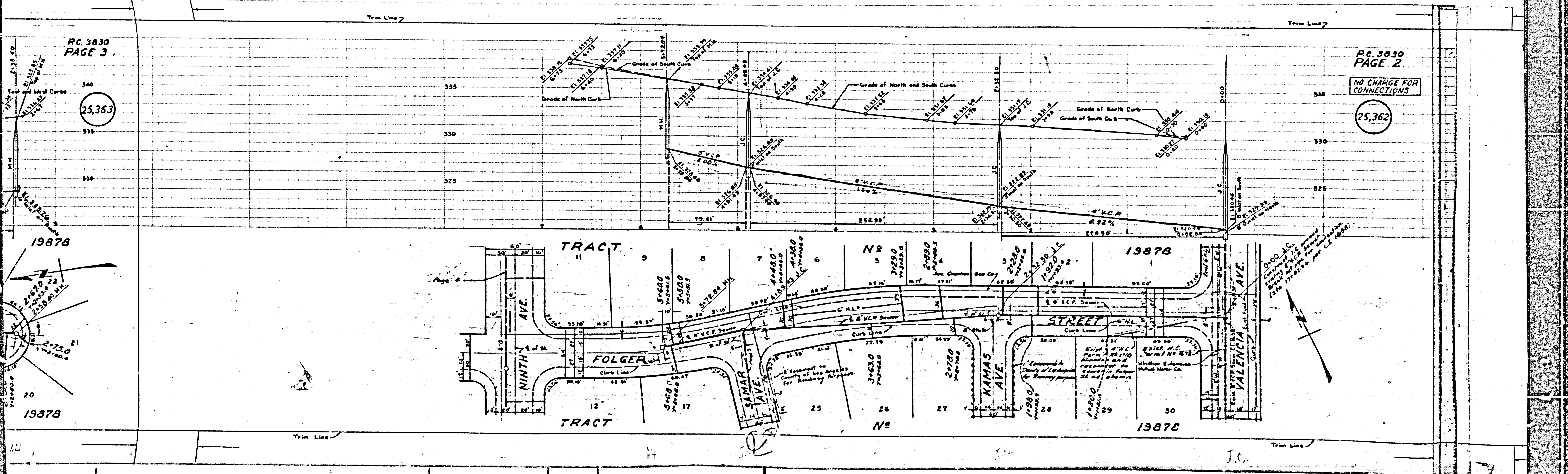
Trim Line

PC. 3630
PAGE 3

PC. 3630
PAGE 2

25,363

25,362



0.00 J.C.
Contractor to be
determined by
City of Los Angeles
for the 1937-38
year C.C. 1938.

J.C.

