

WHITTIER BLDG. DIST. NO. 11

PROFILE ALIGNMENT AND GRADE OF P.C. 3835
 SANITARY SEWERS PAGE 1

TO BE CONSTRUCTED IN
 SANITARY SEWER R/W
 LOT 3, TRACT NO. 2281

PRIVATE CONTRACT NO. 3835

W.S. 34

1 SHEET, 2 PAGES
 SCALE: 1" = 4' HORIZ. 1" = 4' VERT.
 JAN., 1956

23,274

PREPARED IN THE OFFICES OF
 KEMMERER ENGINEERING CO. INC. (2)

By: *Hans C. Thoma*
 REG. C. E. NO. 200

FOR LEGEND SEE PLAN NO. S.A-64

- NOTES
- PROVIDE STAKES ON THE PROPERTY LINE OR PROPERTY LINES PRODUCED AT RIGHT ANGLES TO THE SEWER LINE AT THE CENTER LINE OF EACH MANHOLE.
 - NO REPRESENTATIVE OF THE COUNTY ENGINEER WILL SURVEY OR LAYOUT ANY PORTION OF THE WORK.
 - THE OWNER OR HIS AUTHORIZED REPRESENTATIVE SHALL FURNISH THE COUNTY ENGINEER WITH GRADE SHEETS AND STATION FOR ALL HOUSE LATERALS AND Y BRANCHES AND SHALL PROVIDE STAKES FOR THEM AT THEIR PROPER LOCATIONS WITH STATIONING AND PLAINLY MARKED. ANY CHANGE IN LOCATION SHALL BE REQUESTED IN WRITING BY THE OWNER OR HIS REPRESENTATIVE.
 - NO DIVISIONS SHALL BE MADE IN THESE PLANS WITHOUT THE APPROVAL OF THE COUNTY ENGINEER.
 - USE STANDARD MANHOLE FRAMES AND COVERS, S.A.117, EXCEPT AS NOTED.
 - USE STANDARD STRENGTH PIPE EXCEPT AS NOTED.
 - USE CEMENT MORTAR FOR ALL VITRIFIED CLAY PIPE JOINTS.
 - RESURFACE ALL TRENCH WITHIN PAVED AREA TO MEET L.A. COUNTY ROAD DEPT. OR CALIF. STATE HIGHWAY DEPT. REQUIREMENTS IN ACCORDANCE WITH PERMITS.
 - ENCASE POLE FEET OF SEWER AT POINTS OF INTERFERENCE WITH POLES, S.A.119.
 - HOUSE LATERALS TO BE CONSTRUCTED WITH INVERTS AT PROPERTY LINE 6 FEET BELOW CURB GRADY EXCEPT AS NOTED.
 - ALL STRUCTURES SHALL BE BRICK SEWER STRUCTURES, S.A.104, EXCEPT AS NOTED.
 - FOR ALLOWABLE LEAKAGE TEST USE FORMULA NO. 1 SPEC'S, SEC. 16.
 - MANHOLE TOPS IN UNIMPROVED RIGHTS OF WAY TO BE 6" ABOVE FINISHED GRADE.
- Note: The County Engineer is to furnish the House Lateral depth at the property line before the starting of construction of sewer right-of-way for each house lateral, on the grade sheet.*

SHEET NO.	PAGES
1	1-2

NO CHARGE FOR CONNECTIONS
 J. Carter 7-11-56

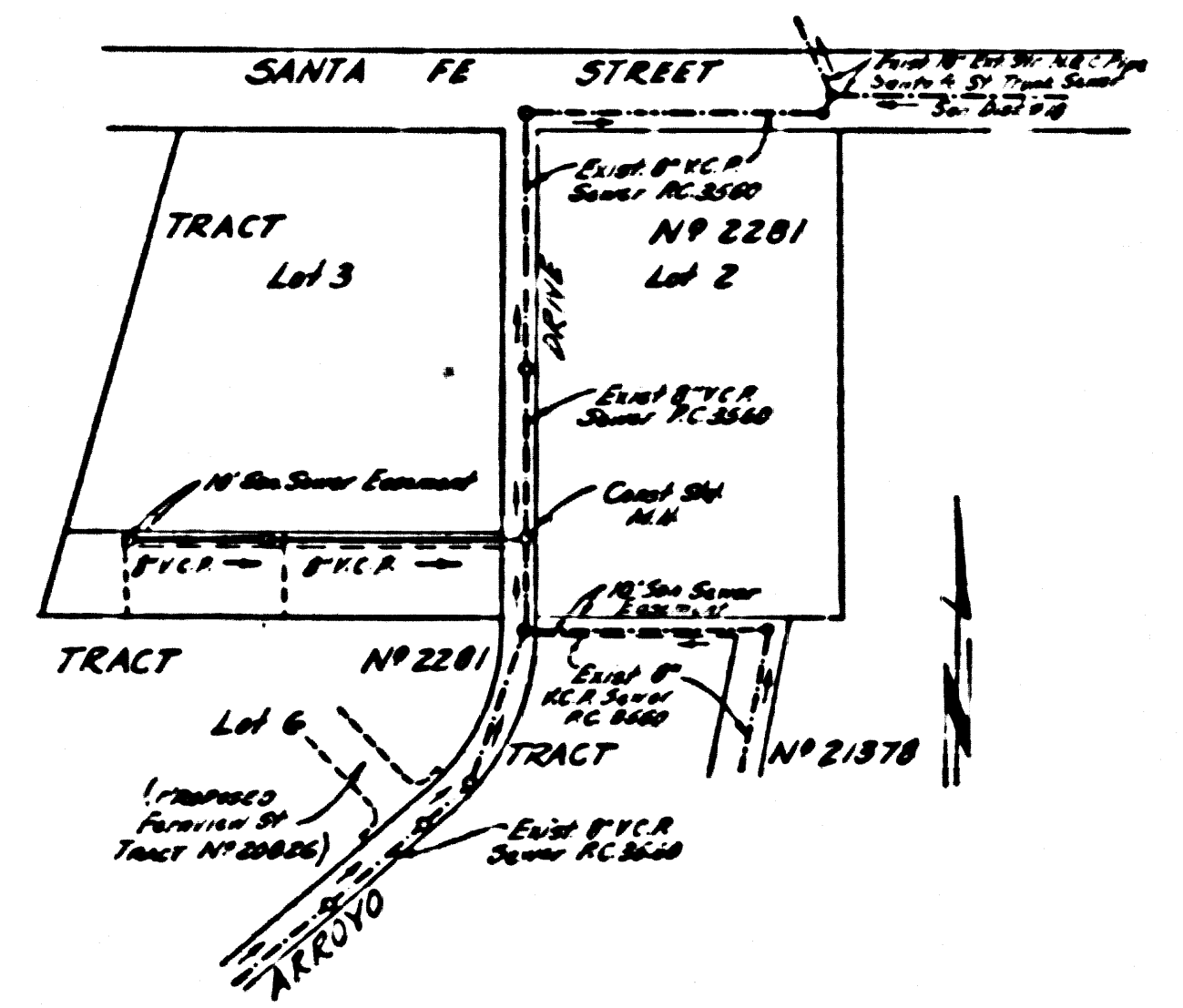
COUNTY OF LOS ANGELES, CALIFORNIA

APPROVED, JOHN A. LAMBE, COUNTY ENGINEER
 APPROVED, A. M. BAWN, CHIEF ENGINEER
 CO. SAN. DIST. NO. 11

By: *A.P. Collins* SANITATION ENGINEER
 By: *G. Posthumus* OFFICE ENGINEER

CHECKED BY: *R. K. Huber* 7-12-56
 OFFICE OF COUNTY ENGINEER, REG. C. E. NO. 7660

B.M. 5 Y 1228 L & T cor. of conc. Hdwall S. end drain pipe 55" N. E. SANTA FE ST. 8' 10" W. E. COLIMA RD. ELEV. 197.307



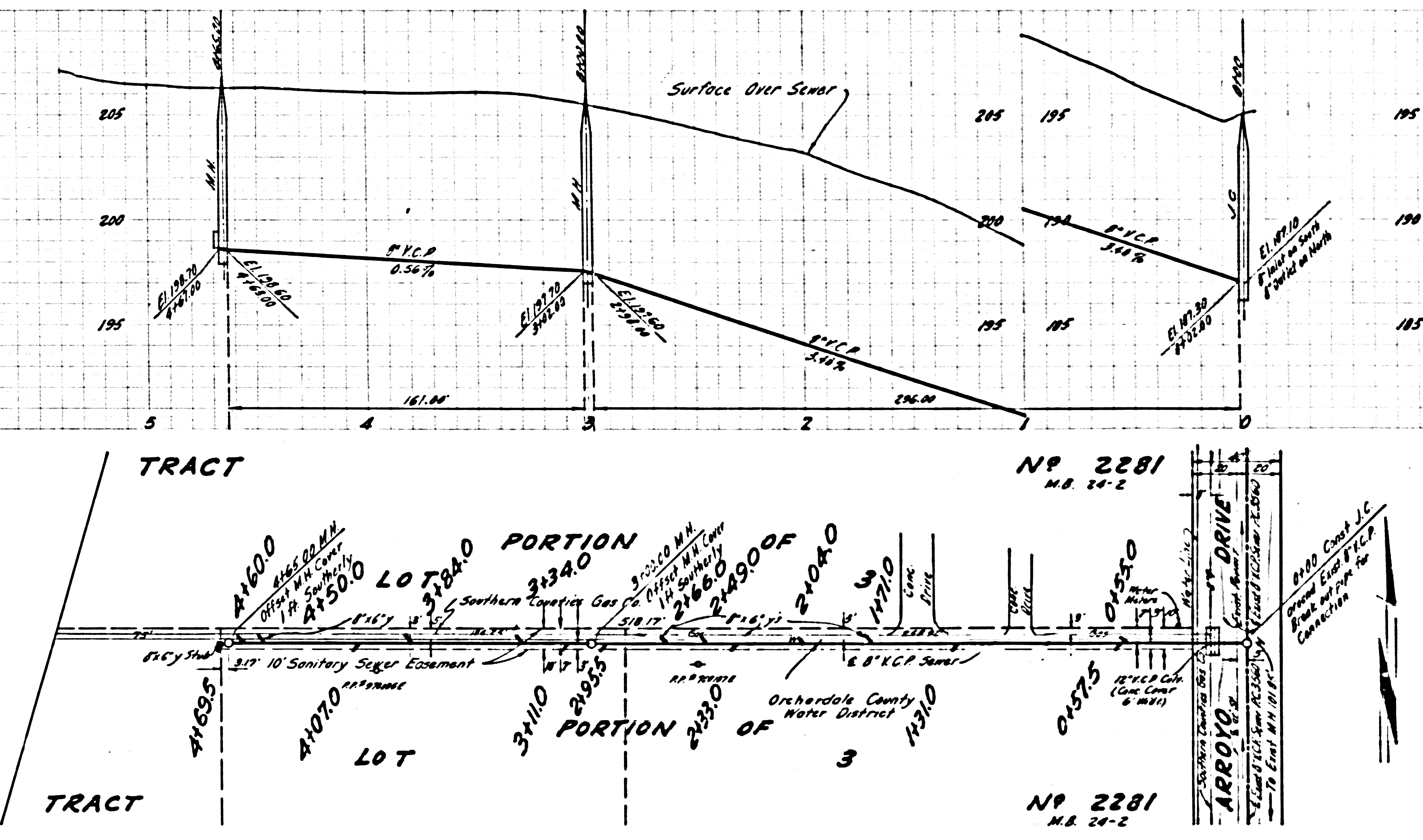
INDEX MAP
 Scale: 1" = 300' PG. 3835

Quoted 1-13-56 McHenry

P.C. 3835 PAGE 2

23,275

NO CHARGE FOR CONNECTIONS



J.L. 3835
 Rev. 1-28-52