

**PUEENTE BLDG. DIST. NO. 2**

PROFILE ALIGNMENT AND GRADE OF  
**SANITARY SEWERS**  
 TO BE CONSTRUCTED IN

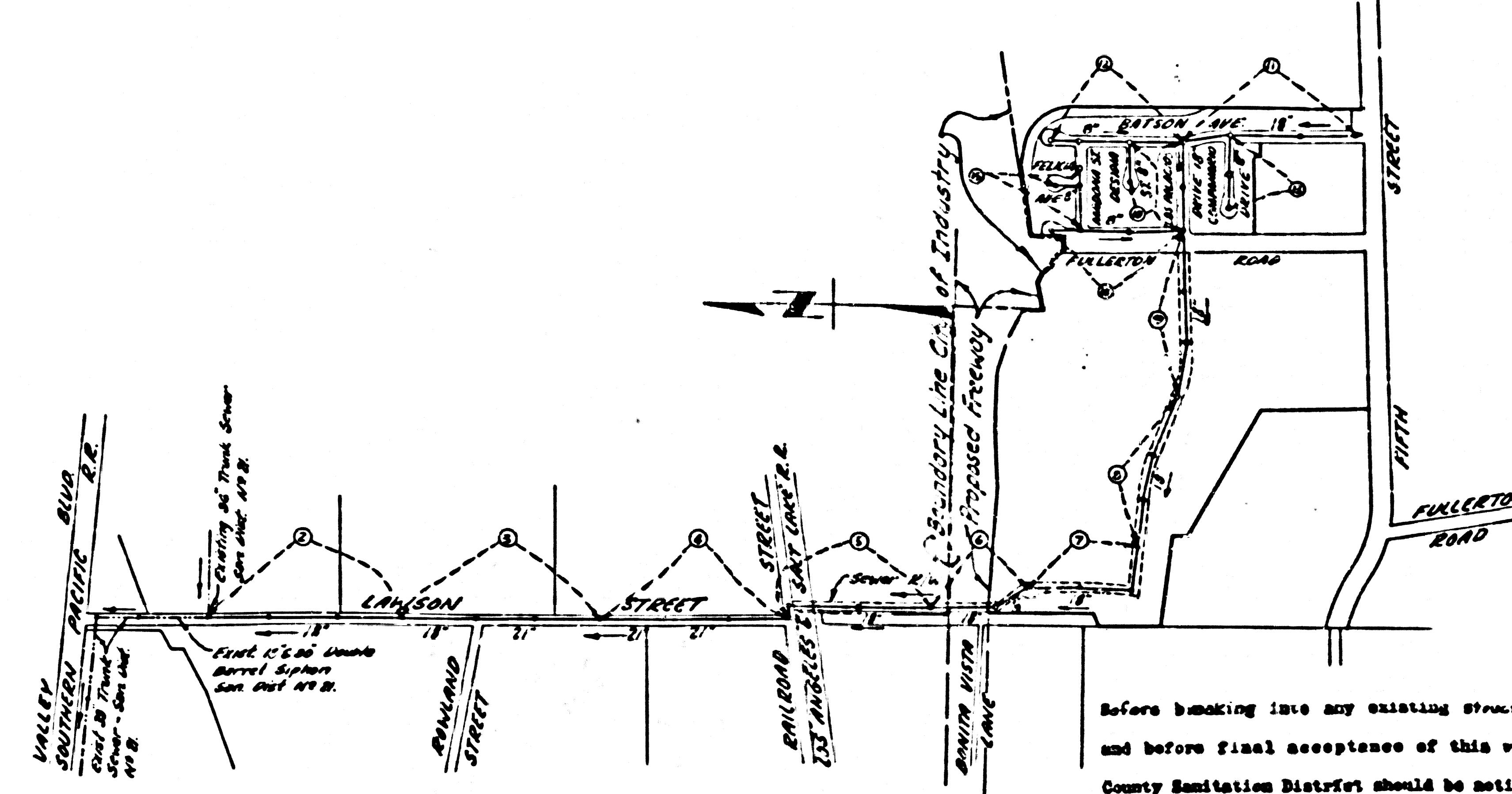
P.C. 3841  
 PAGE 1  
 DOUBLE SCALE

TRACT NO 24358 (26,498)

PRIVATE CONTRACT NO. 3841  
 W.S. 38  
 8 SHEETS, 16 PAGES

SCALE: VERT. 1" = 4' HORIZ. 1" = 40'  
 JANUARY, 1958  
 PREPARED IN THE OFFICES OF

**NATIONAL ENGINEERING COMPANY**  
 BY: *E. J. Edwards*  
 REG. P. E. NO. 2032  
 FOR LEGEND SEE PLAN NO. S-A-64

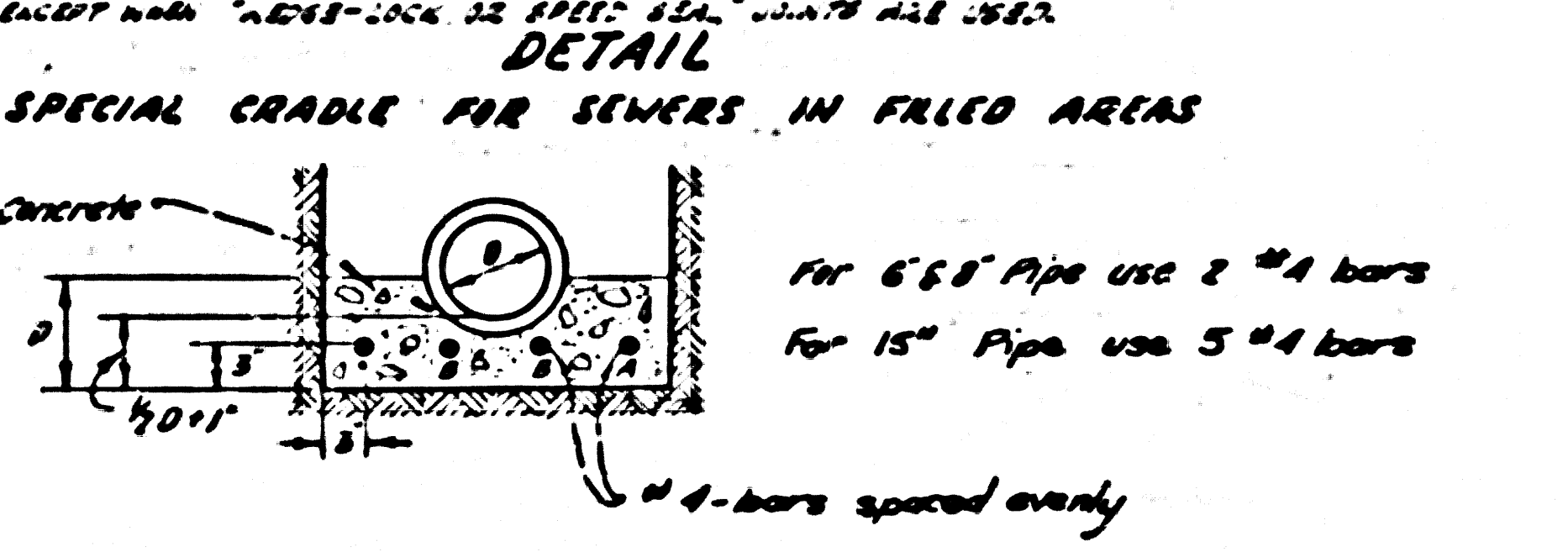


**BENCH MARK: B.M. 44-11**  
 Fifth Avenue and Barton Avenue 470 N  
 of center of pavement of Fifth Ave 185.0 W  
 of center line of Barton produced 15' front  
 W. end of N concrete headwall of culvert at  
 post marked 'N 163' headwall checked 'B.M. 44-11'  
 A large bolt spike. F.B. 1566-43, 1955 H.J.  
**ELEV. 466.815**

REVISION - PAGE 2  
 Addition of one Manhole  
 CHECKED BY: *J.K. Quinn* 2-13-58  
 DIST. BY: *J.K. Quinn* 2-13-58

**CONNECTION CHARGES**  
 AS INDICATED  
*L. Curtis* 6-24-58

- NOTES:
- PROPOSED STAKES ON THE PROPERTY LINE OR PROPERTY LINES PRODUCED AT RIGHT ANGLES TO THE SEWER LINE AT THE CENTER LINE OF EACH MANHOLE.
  - NO REPRESENTATIVE OF THE COUNTY ENGINEER WILL SURVEY OR LAYOUT ANY PORTION OF THE WORK.
  - THE OWNER OR HIS AUTHORIZED REPRESENTATIVE SHALL FURNISH THE COUNTY ENGINEER WITH GRADE SHEETS AND STATION FOR ALL HOUSE LATERALS AND Y BRANCHES AND SHALL PROVIDE STAKES FOR THEM AT THEIR PROPER LOCATIONS WITH STATION. THIS PLANNING MARKER, ANY CHANGE IN LOCATION SHALL BE REQUESTED IN WRITING BY THE OWNER OR HIS REPRESENTATIVE.
  - NO REVISIONS SHALL BE MADE IN THESE PLANS WITHOUT THE APPROVAL OF THE COUNTY ENGINEER.
  - USE STANDARD MANHOLE FRAMES AND COVERS, S-A-117, EXCEPT AS NOTED.
  - USE STANDARD STRUCTURES FOR EXCEPT AS NOTED.
  - USE STANDARD JOINTS FOR ALL WITHIN CLAY PIPE JOINTS, OF "DEEP-LOCK" OR "SUNNY BAY" TYPE SPECIFICATIONS, SEC. 54, 62.
  - RESURFACE ALL TRACES WITHIN PAVED AREA TO MEET L. A. COUNTY ROAD DEPT., OR CALIF. STATE HIGHWAY DEPT. SPECIFICATIONS IN ACCORDANCE WITH MANUALS.
  - EXCAVE FOUR FEET OF SEWER AT POINTS OF INTERFERENCE WITH POLES, S-A-119.
  - HOUSE LATERALS TO BE CONSTRUCTED WITH INVERTS AT PROPERTY LINE 6 FEET BELOW CURB GRADE EXCEPT AS NOTED.
  - ALL STRUCTURES SHALL BE BRICK SEWER STRUCTURES, S-A-104, EXCEPT AS NOTED.
  - FOR ALLOWABLE INCREASE TEST USE FORMULA NO. 1, SPEC'S, SEC. 56.
  - MANHOLE TOPS IN UNPAVED RIGHTS-OF-WAY TO BE 6" ABOVE FINISHED GRADE.
  - PLANNING ENGINEER TO FURNISH HOUSE LATERAL DEPTH AT PROPERTY LINE BELOW TOP OF CURB ELEVATION FOR EACH HOUSE LATERAL ON THE GRADE SHEET.
  - THE CONTRACTOR SHALL NOTIFY THE CONSTRUCTION AND STORM DRAIN DIVISION BY TELEPHONE AND/OR IN WRITING AT LEAST 24 HOURS BEFORE STARTING ANY WORK UNDER THIS CONTRACT.
  - NO CONSTRUCTION SHALL BE PERMITTED IN FILLED AREAS UNLESS ACCEPTABLE CERTIFICATION IS SUBMITTED TO THE CONSTRUCTION DIVISION OF THE COUNTY ENGINEER'S DEPARTMENT THAT DRAINAGE IS GREATER THAN 50%.
  - IF CONSTRUCTION IS LESS THAN 50%, THE SEWER MUST BE GRADED AS SHOWN BELOW IN DETAIL.
  - IF CONSTRUCTION IS GREATER THAN 50%, GRADING IS NOT REQUIRED. HOWEVER, JOINT CHANGING MUST BE SUBSTITUTED FOR CEMENT MORTAR FOR ALL JOINTS IN FILLED AREAS EXCEPT HARD "DEEP-LOCK" JOINTS AS SPEC'D.



NOTE:  
 GRADES TO WHICH THIS IMPROVEMENT IS TO BE CONSTRUCTED ARE SHOWN ON PLANS AND PROFILES. GRADE POINTS FOR TOP OF CURB, CENTER LINE OF STREETS, OR CENTER LINE OF ALLEYS ARE SHOWN BY CIRCLES ON PROFILES. AT ALL POINTS BETWEEN DESIGNATED POINTS THE GRADE SHALL BE ESTABLISHED SO AS TO CONFORM TO A STRAIGHT LINE DRAWN BETWEEN SAID DESIGNATED POINTS.  
 ELEVATIONS ARE IN FEET ABOVE U.S. C.G.D.S. SEA LEVEL UNLESS OTHERWISE SPECIFIED.  
 THIS DRAWING AND THE DATA HEREON ARE HEREBY MADE A PART OF THE SPECIFICATIONS.  
 WORK SHALL BE CONSTRUCTED ACCORDING TO SPECIFICATIONS ON FILE IN THE OFFICE OF THE COUNTY ENGINEER AND SHALL BE PROSECUTED ONLY BY THE RESIDENCE OF THE COUNTY ENGINEER.  
 BEFORE WORK CAN BE STARTED, THE CONTRACTOR MUST OBTAIN A PERMIT TO EXCAVATE IN COUNTY STREETS FROM THE L. A. COUNTY ROAD DEPT., S.A.P.C. 705/ AND MAKE A DEPOSIT WITH THE COUNTY ENGINEER, ROOM 324 SAN AMERICAN BUILDING, 324 SO. BRADWAY SUBJECT TO COVER THE COST OF CONSTRUCTION INSPECTION AND RECORD PLANS.  
 APPROVAL OF THIS PLAN BY THE COUNTY OF LOS ANGELES DOES NOT CONSTITUTE A REPRESENTATION AS TO THE ACCURACY OF THE LOCATION OF OR THE EXISTENCE OR NON-EXISTENCE OF ANY UNRECORDED EASEMENT, PIPE, OR STRUCTURE WITHIN THE LIMITS OF THE PROJECT. THIS NOTE APPLIES TO ALL PAGES.  
 IF WORK IS TO BE DONE IN A STATE HIGHWAY, A PERMIT MUST BE OBTAINED FROM THE STATE OF CALIFORNIA, DIVISION OF HIGHWAYS, 126 SOUTH SPRING STREET.

COUNTY OF LOS ANGELES, CALIFORNIA

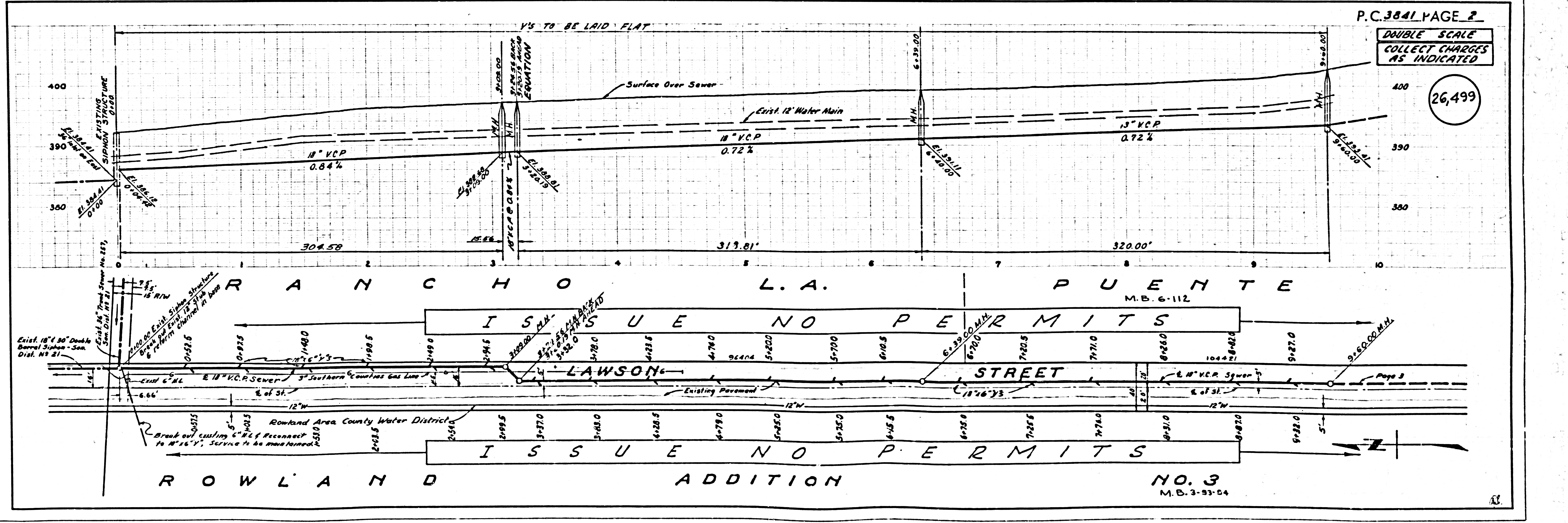
APPROVED, JOHN A. LAMBE, COUNTY ENGINEER  
 APPROVED, A. M. BAWN, CHIEF ENGINEER  
 COUNTY SAN. DIST. NO. 21

BY: *E. J. Edwards* (SANITATION ENGINEER)  
 BY: *A. M. Bawn* (OFFICE ENGINEER)

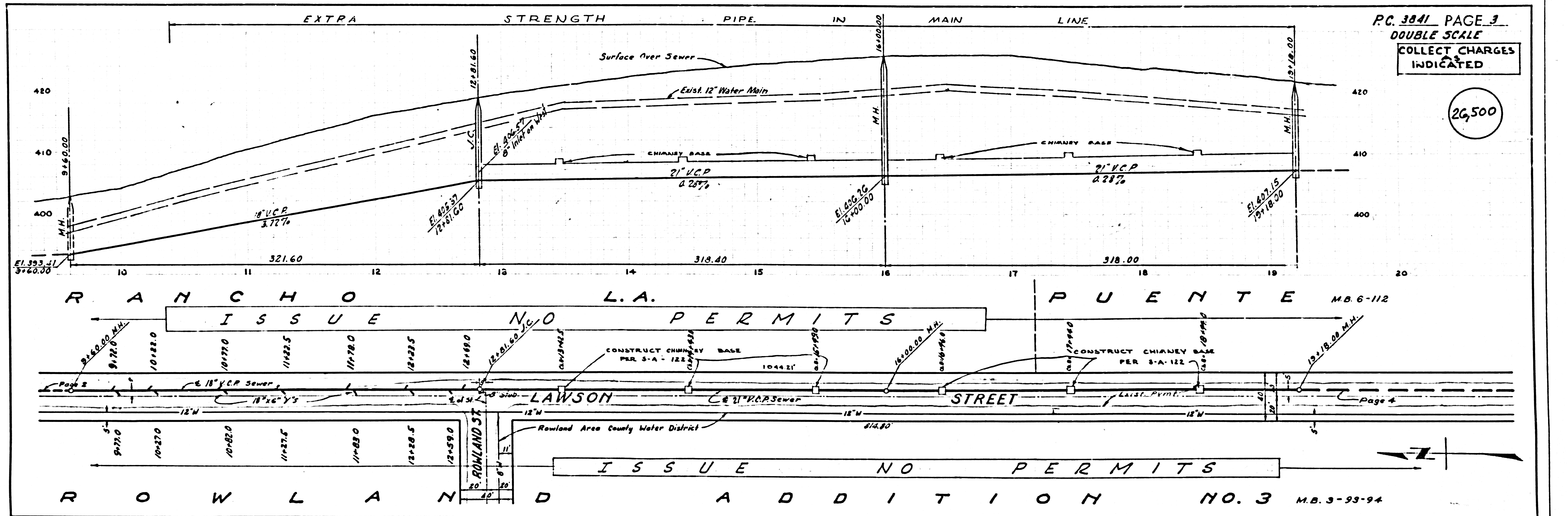
CHECKED BY: *J.K. Quinn* 6-23-58  
 OFFICE OF COUNTY ENGINEER, DIST. C. E. NO. 2032

APPROVED, JOHN A. LAMBE, CITY ENGINEER  
 CITY OF INGLEWOOD

BY: *E. J. Edwards* (SANITATION ENGINEER)

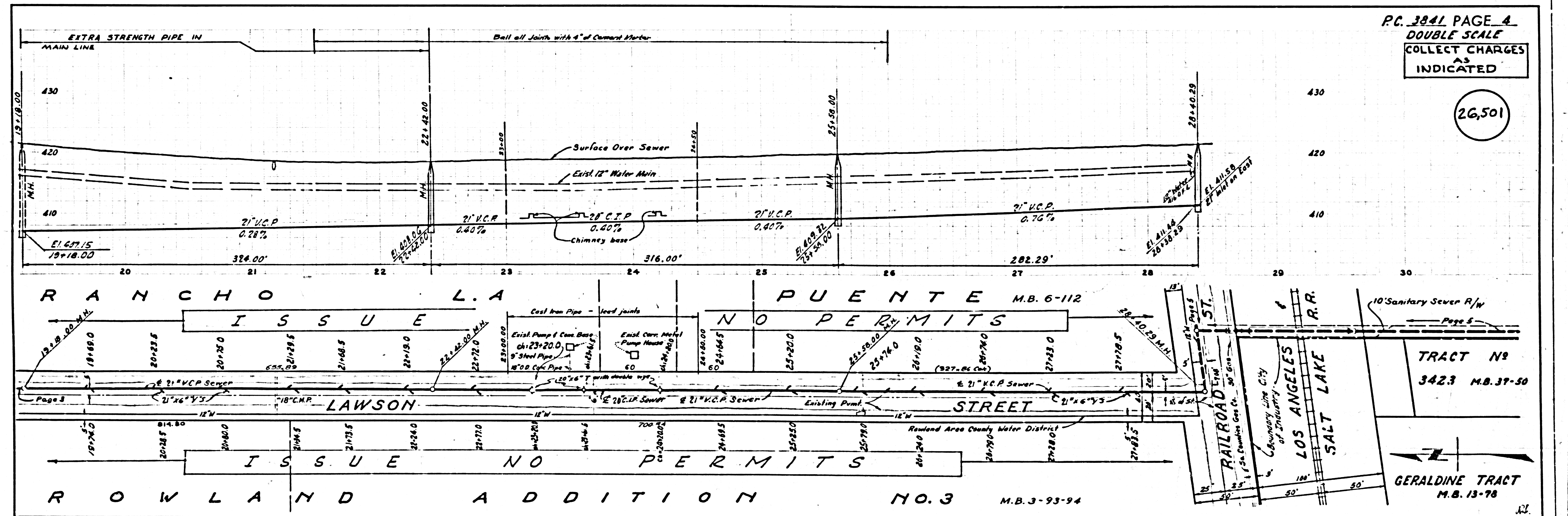






PC 3841 PAGE 3  
 DOUBLE SCALE  
 COLLECT CHARGES  
 INDICATED

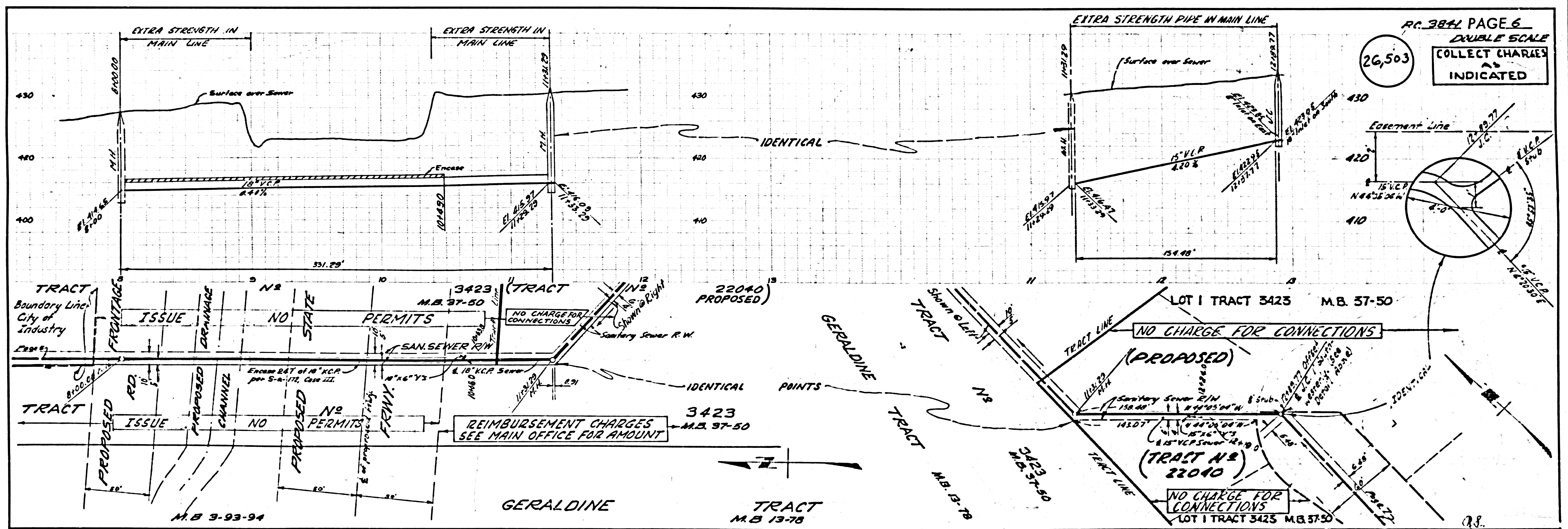
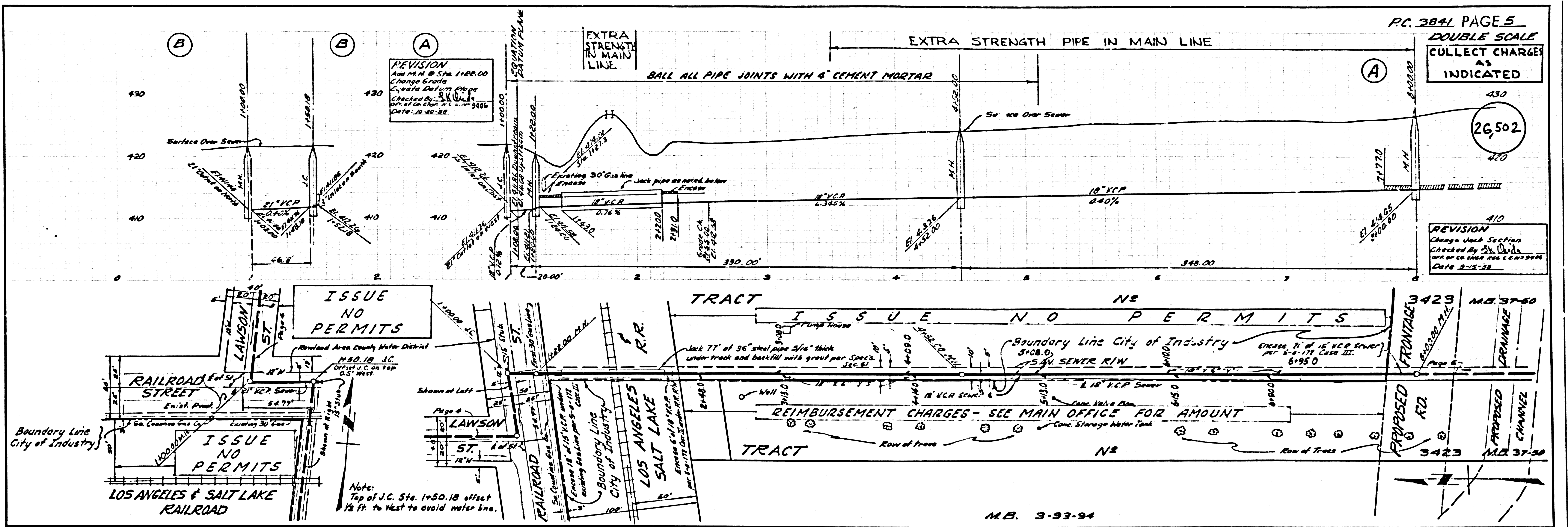
26,500



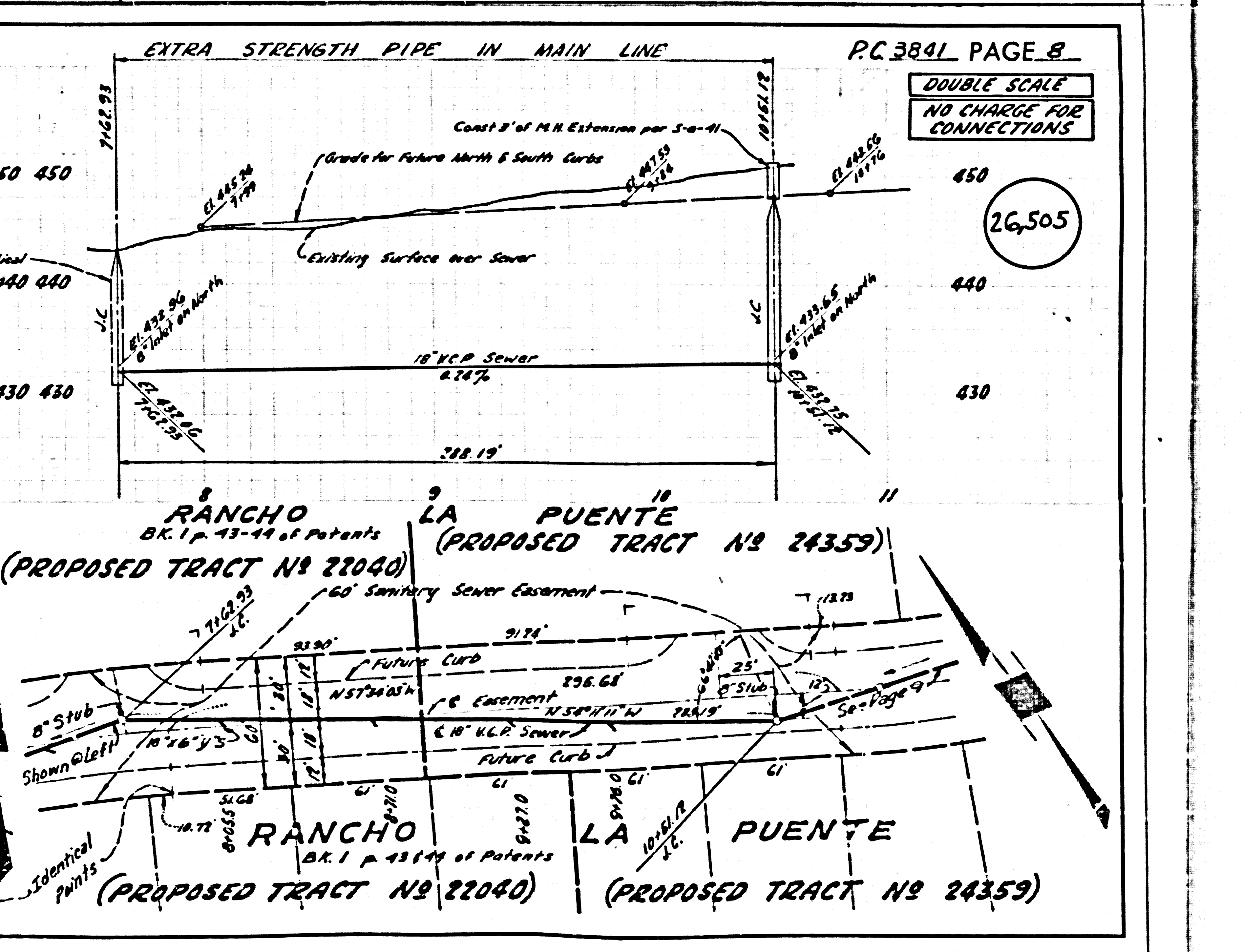
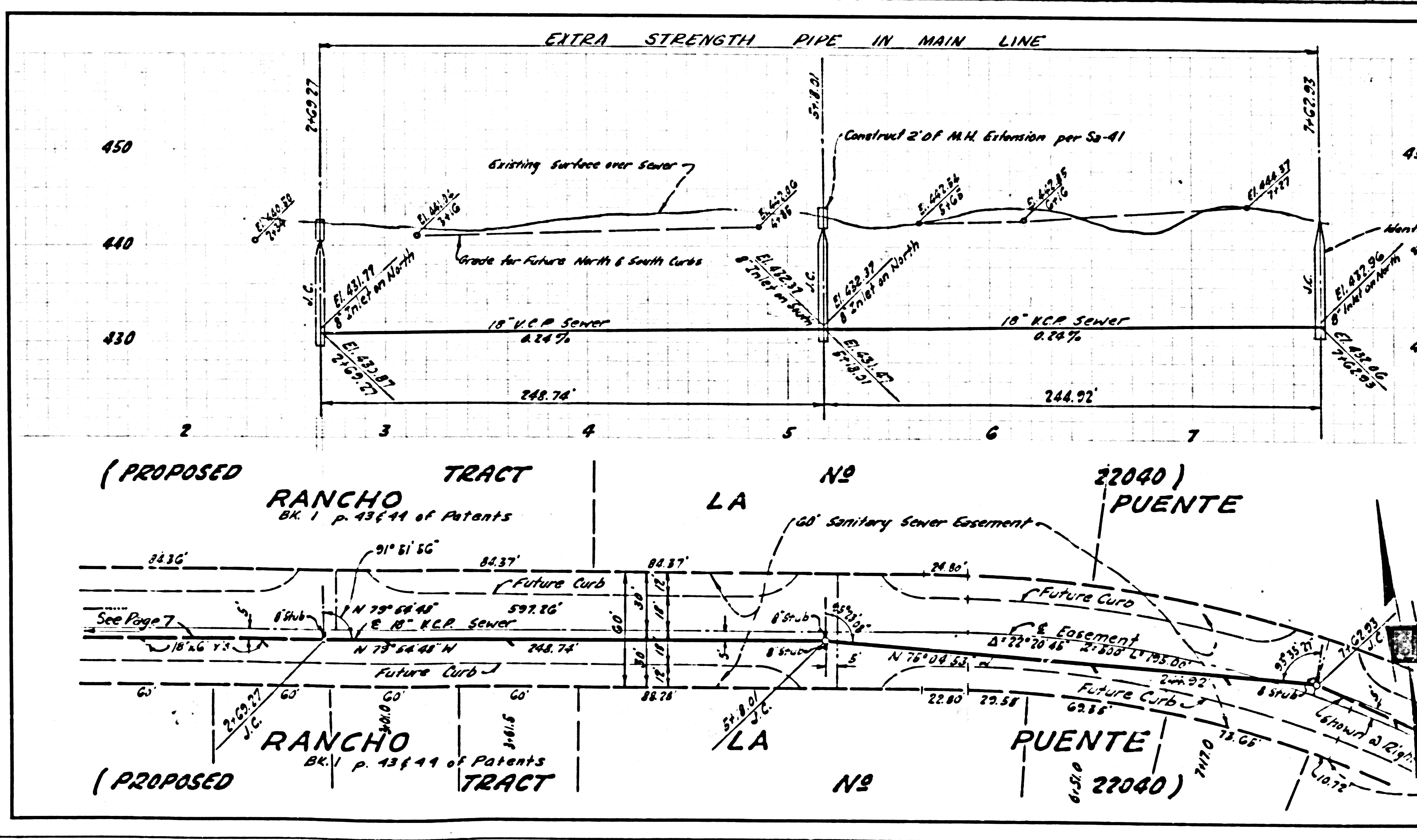
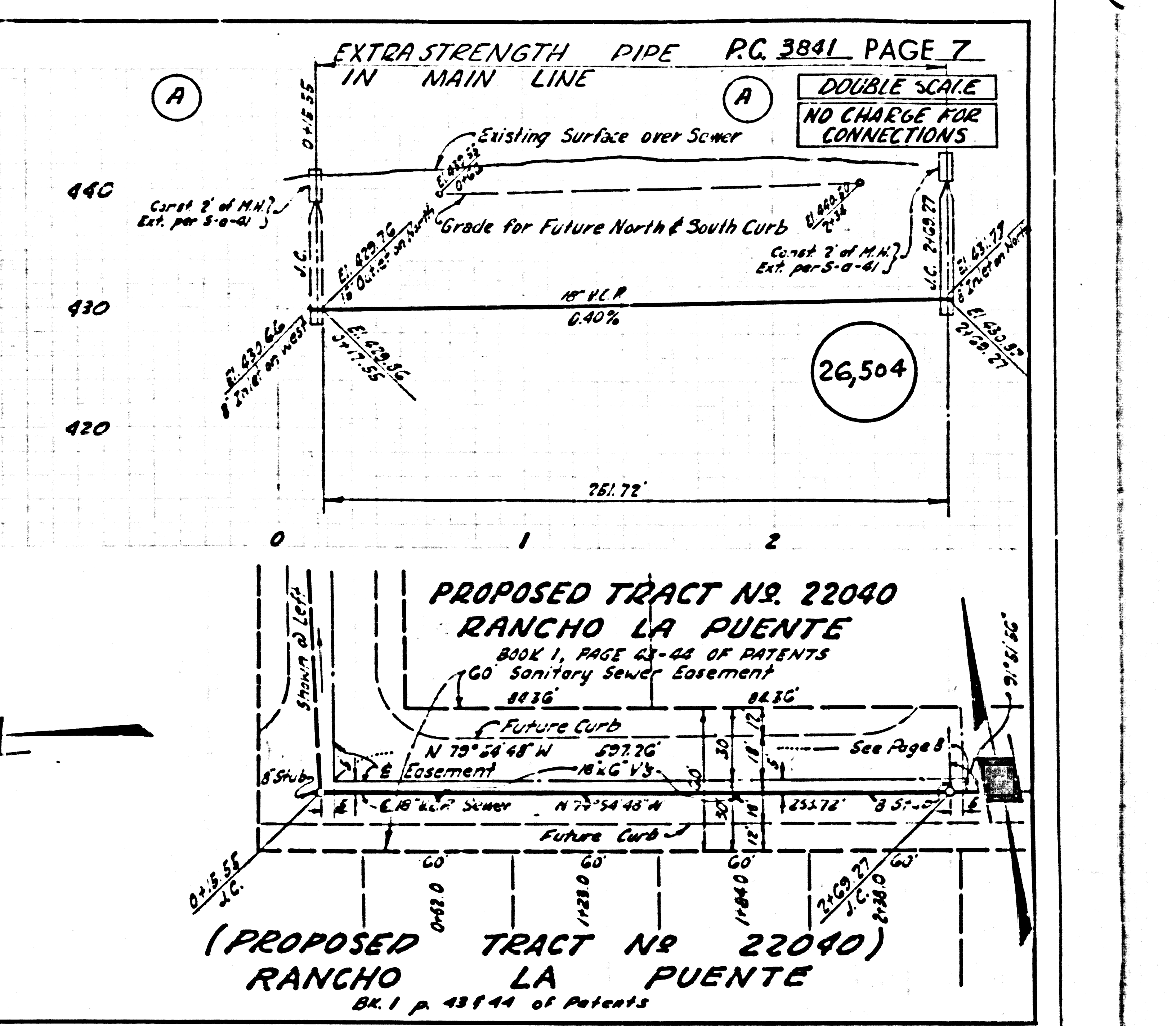
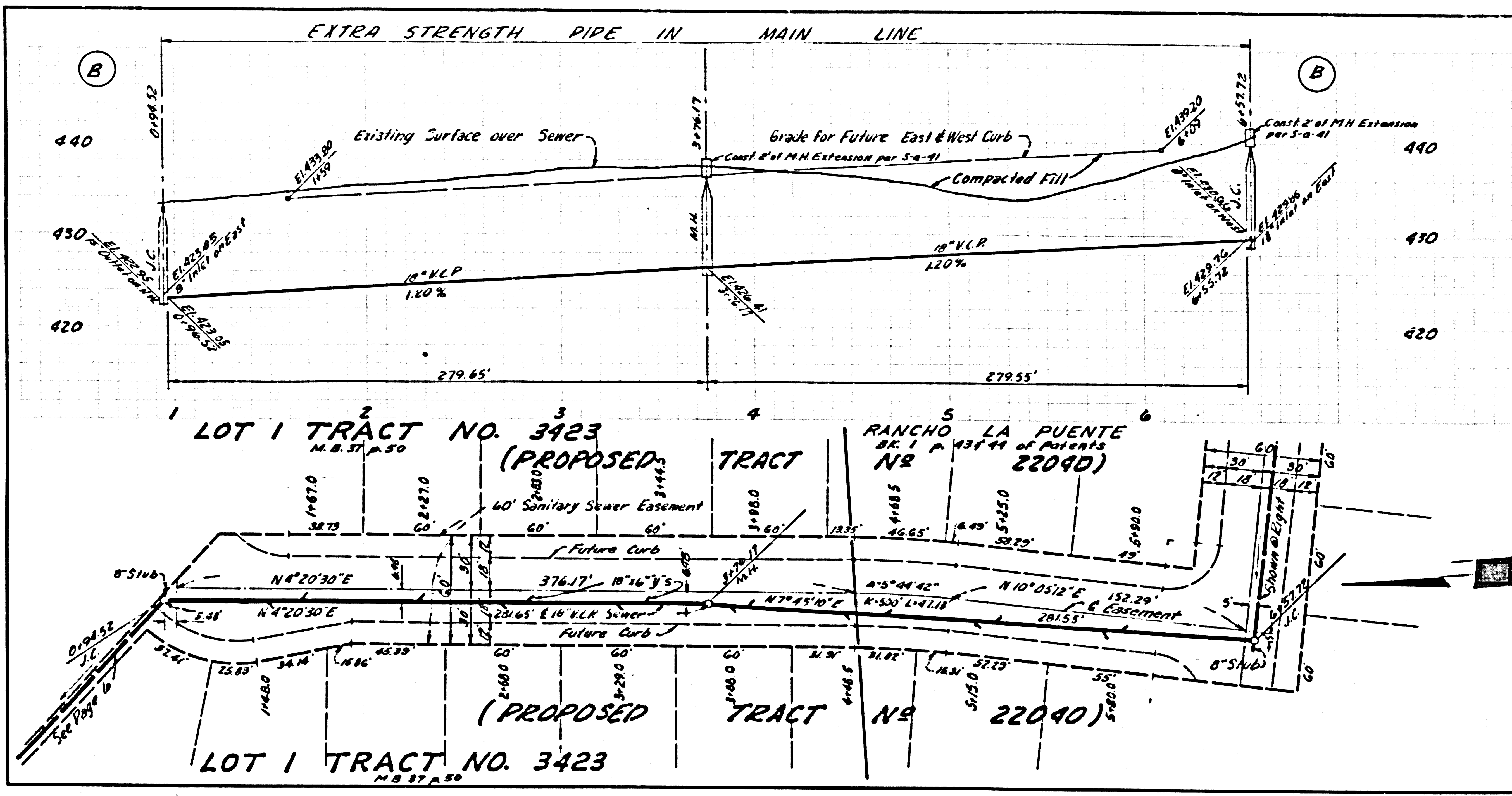
PC 3841 PAGE 4  
 DOUBLE SCALE  
 COLLECT CHARGES  
 INDICATED

26,501





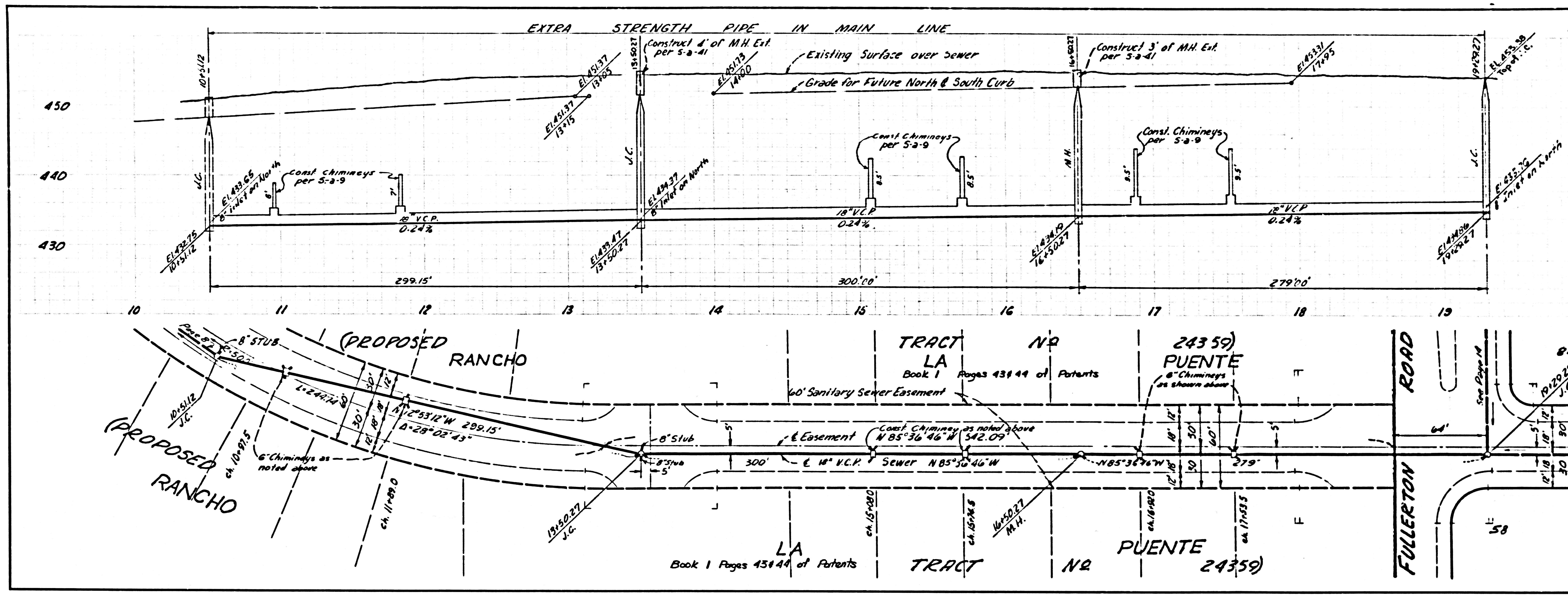






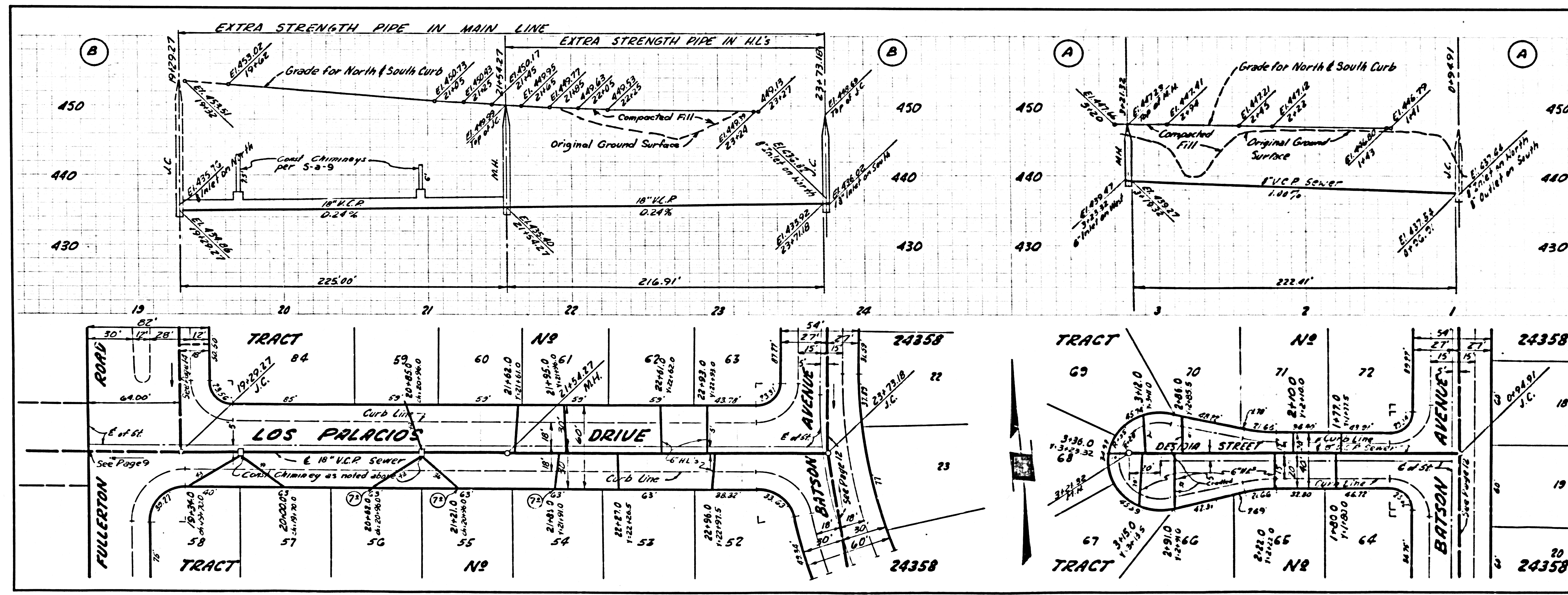
DOUBLE SCALE  
NO CHARGE FOR CONNECTIONS

26,506



DOUBLE SCALE  
NO CHARGE FOR CONNECTIONS

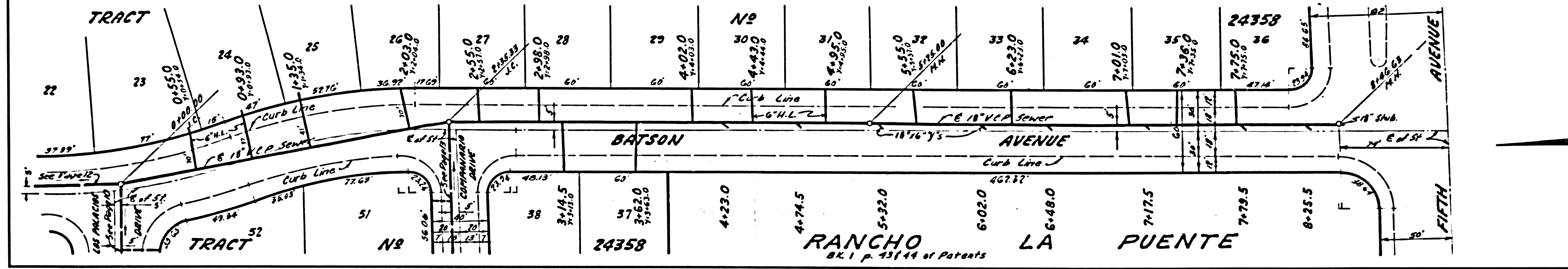
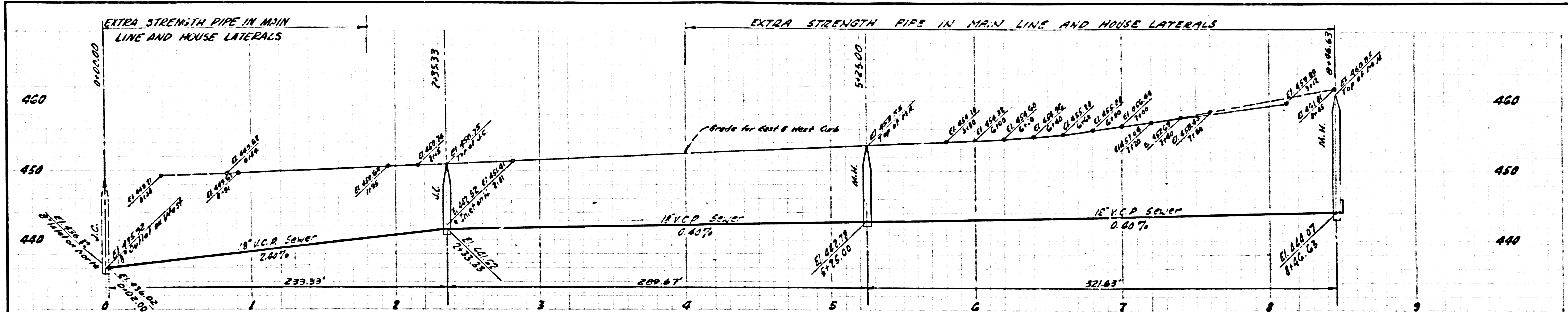
26,507





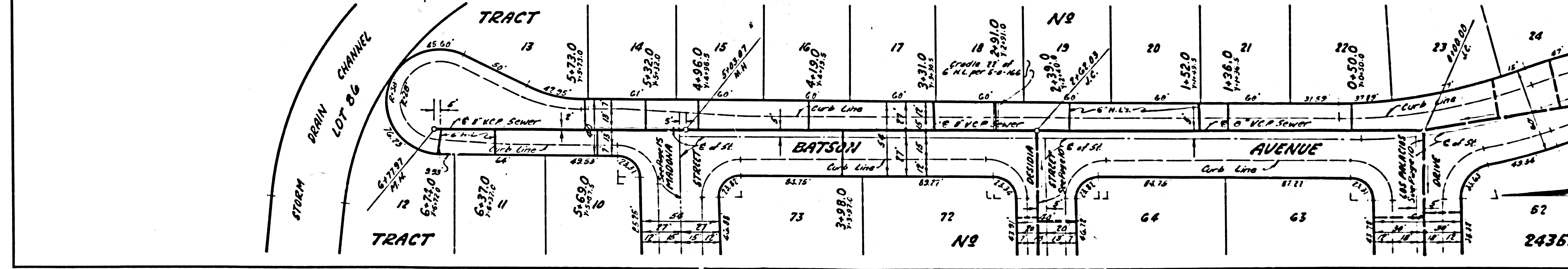
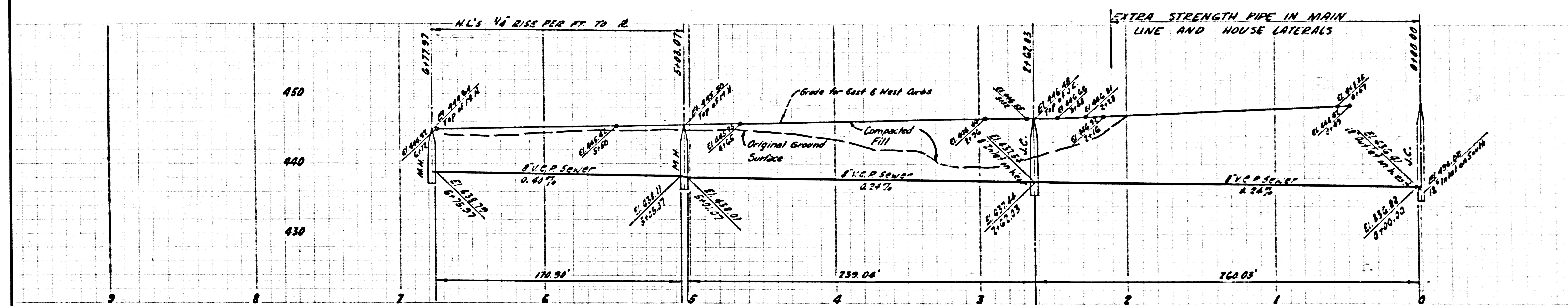
DOUBLE SCALE  
NO CHARGE FOR CONNECTIONS

26,508



DOUBLE SCALE  
NO CHARGE FOR CONNECTIONS

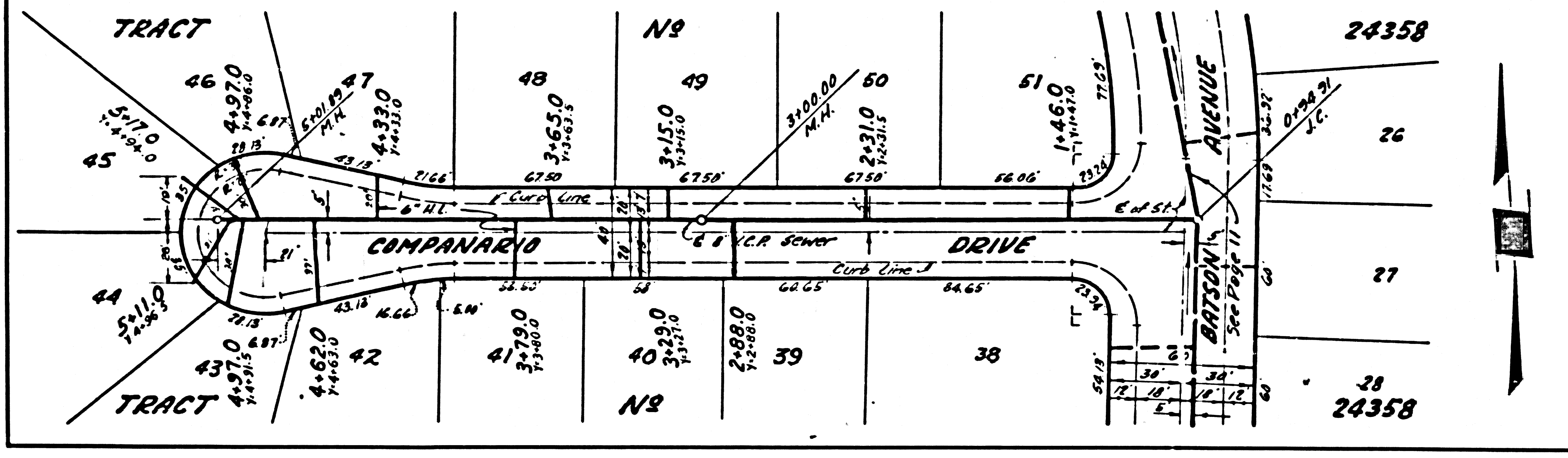
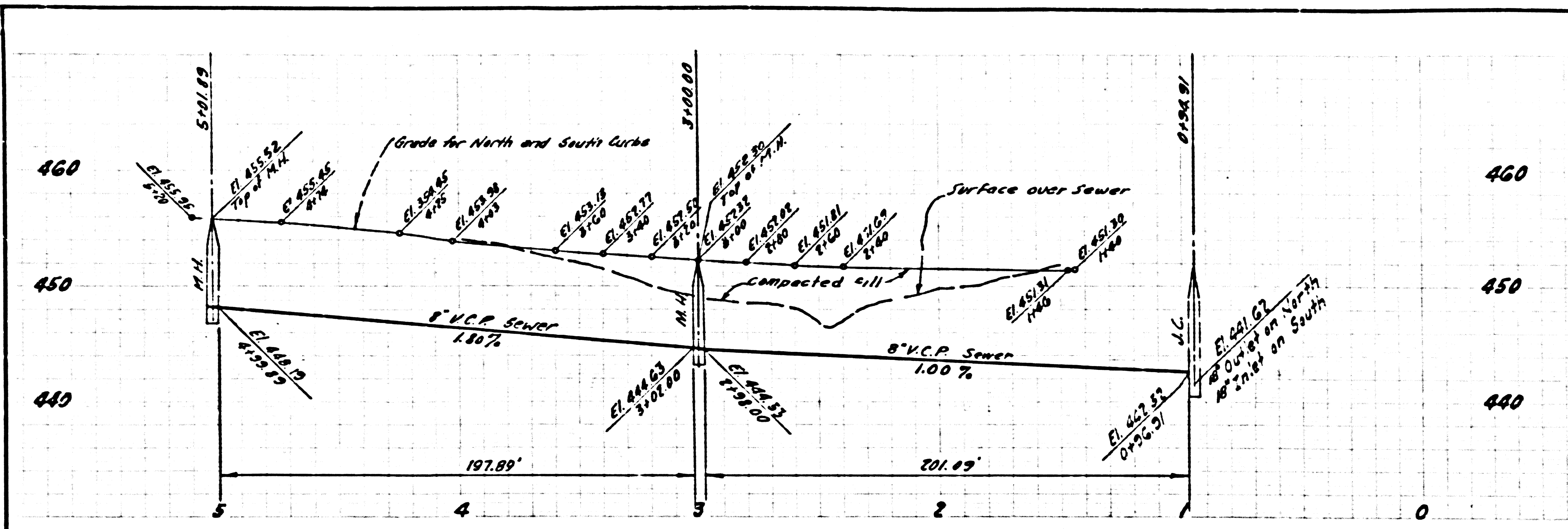
26,509





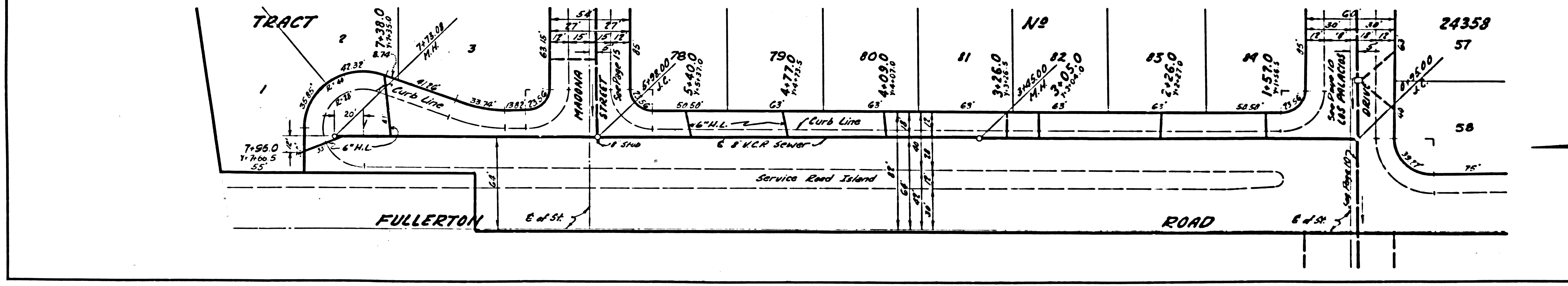
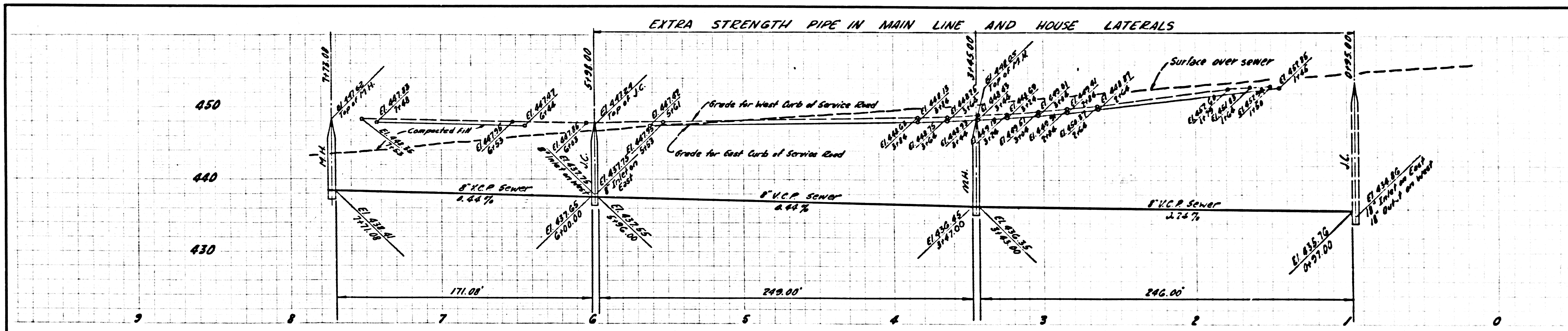
DOUBLE SCALE  
NO CHARGE FOR  
CONNECTIONS

26,510



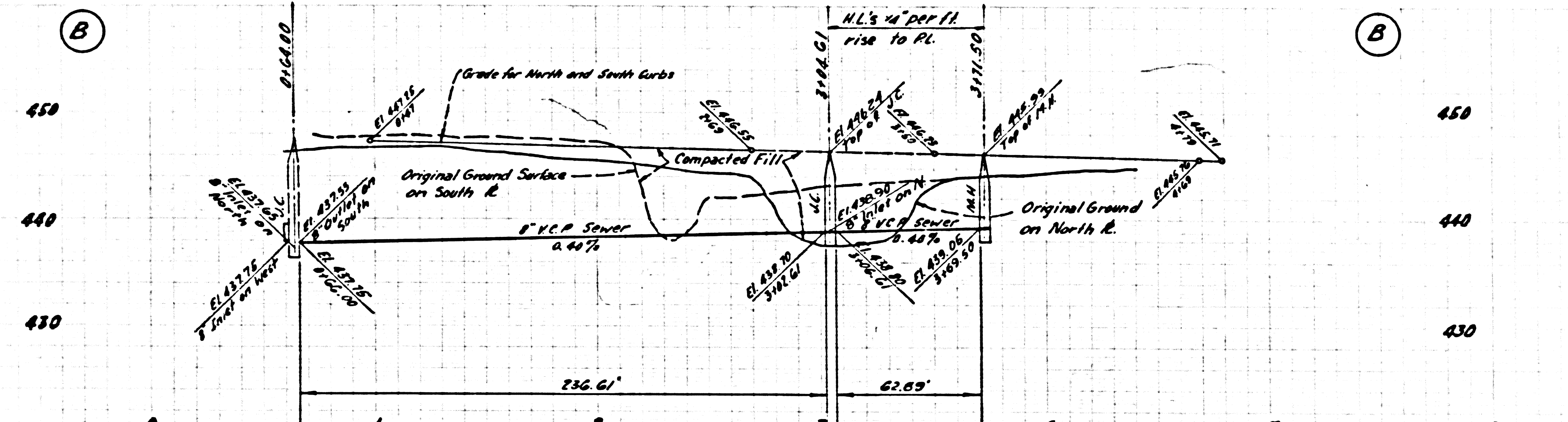
DOUBLE SCALE  
NO CHARGE FOR  
CONNECTIONS

26,511



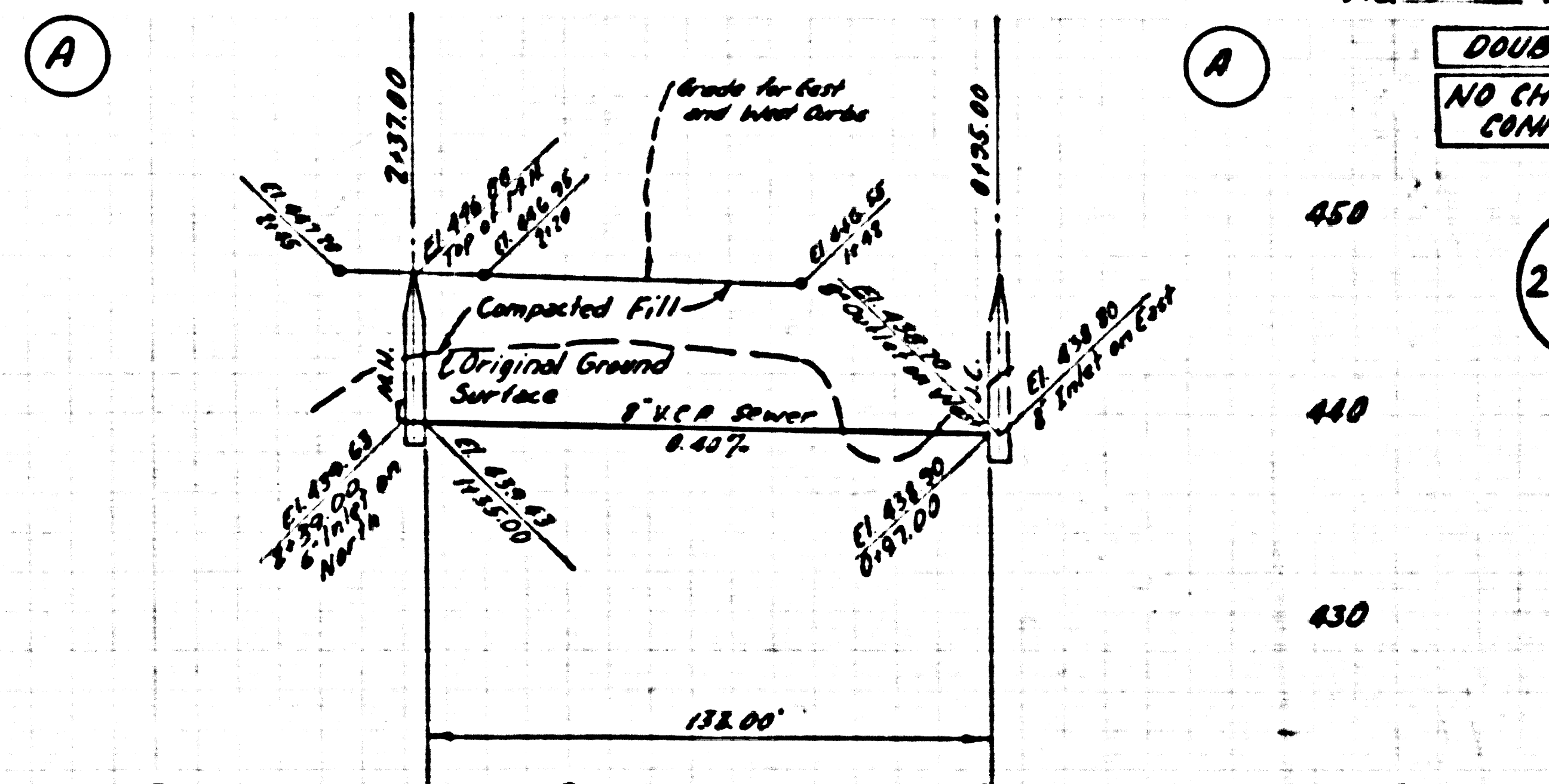


(B)



(B)

(A)



PG. 3841 PAGE 15

DOUBLE SCALE  
NO CHARGE FOR CONNECTIONS

26,512

(B)

