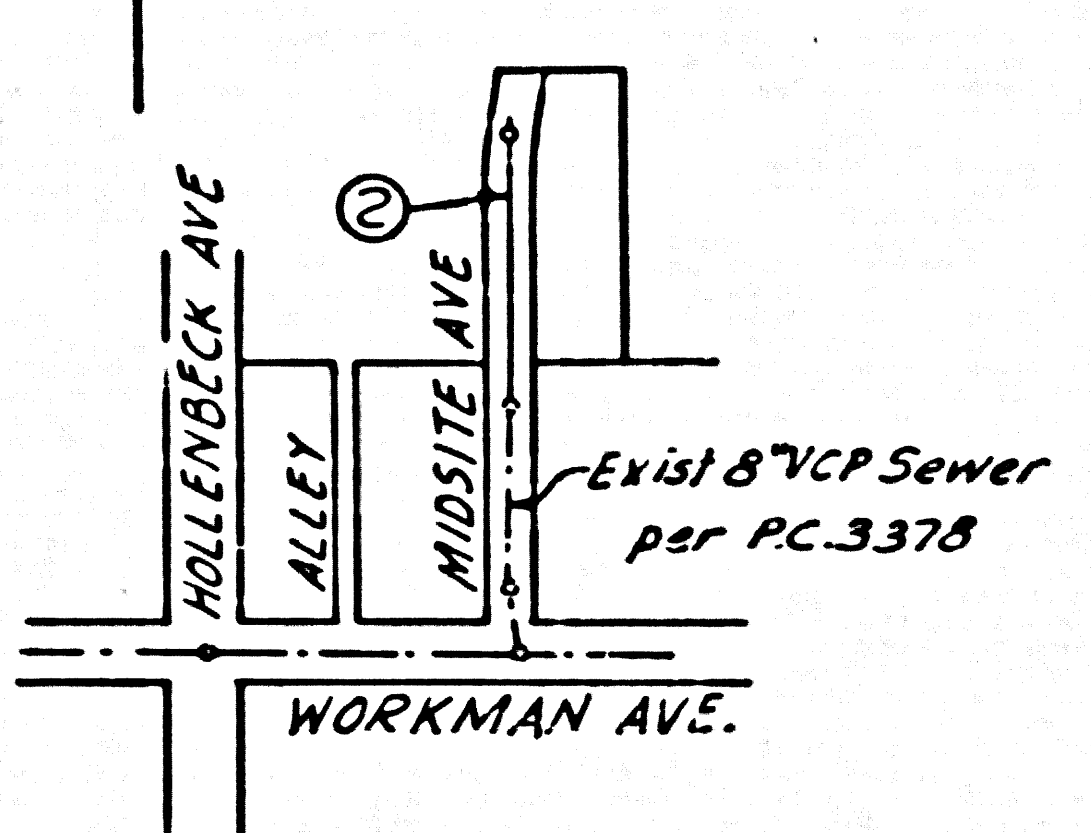


BENCH MARK
S.J. 449 - Elev. 536.320
Lead of Tack in top of S.W. side of 30" Stand pipe
marked J.29 S.W. corner of Rowland Ave.
& Barranca St.



INDEX MAP
SCALE: 1" = 300'
TRACT N° 17284
P.C. 3852

SHEET N°	PAGES
1	1-2

SAN DIMAS : BLDG. DIST. NO. 10

NOTE:
"FIVE STAKES ON THE PROPERTY LINE OR PROPERTY LINE" PRODUCED AT RIGHT ANGLES TO THE SEWER LINE AT THE CENTER LINE OF EACH MANHOLE.
NO REPRESENTATIVE OF THE COUNTY ENGINEER WILL SURVEY OR LAYOUT ANY PORTION OF THE WORK.
THE OWNER OR HIS AUTHORIZED REPRESENTATIVE SHALL FURNISH THE COUNTY ENGINEER WITH GRADE SHEETS AND STATION FOR ALL HOUSE LATERALS AND Y BRANCHES AND SHALL PROVIDE STAKES FOR THEM AT THEIR PROPER LOCATIONS WITH STATION AND PLANNY MARKS. ANY CHANGE IN LOCATION SHALL BE REQUESTED IN WRITING BY THE OWNER OR HIS REPRESENTATIVE.
NO REVISIONS SHALL BE MADE IN THESE PLANS WITHOUT THE APPROVAL OF THE COUNTY ENGINEER.
1. USE STANDARD MANHOLE FRAMES AND COVERS, S.A-117, EXCEPT AS NOTED.
2. USE STANDARD STRENGTH PIPE EXCEPT AS NOTED.
3. USE CEMENT MORTAR FOR ALL WITHEDED CLAY PIPE JOINTS.
4. SURFACE ALL TRENCH WITHIN PAVED AREA TO MEET L.A. COUNTY ROAD DEPT., OR CALIF. STATE HIGHWAY DEPT. REQUIREMENTS IN ACCORDANCE WITH PERMITS.
5. INDICATE FOUR FEET OF SEWER AT POINTS OF INTERFERENCE WITH POLES, S.A-119.
6. HOUSE LATERALS TO BE CONDUCTED WITH INVERTS AT PROPERTY LINE 6 FEET BELOW CURB GRADE EXCEPT AS NOTED.
7. ALL STRUCTURES SHALL BE BRICK SEWER STRUCTURES, S.A-104, EXCEPT AS NOTED.
8. FOR ALLOWABLE LEAK-AGE TEST USE FORMULA NO. 1 SPEC. SEC. 59.
9. MANHOLE TOPS IN UNIMPROVED RIGHTS-OF-WAY TO BE 6" ABOVE FINISHED GRADE.
10. The private Engineer is to furnish the above lateral depth at the property line below the top of curb elevation for each house lateral as the grade sheet.

NO CHARGE FOR CONNECTIONS
S.K. White 7-17-56

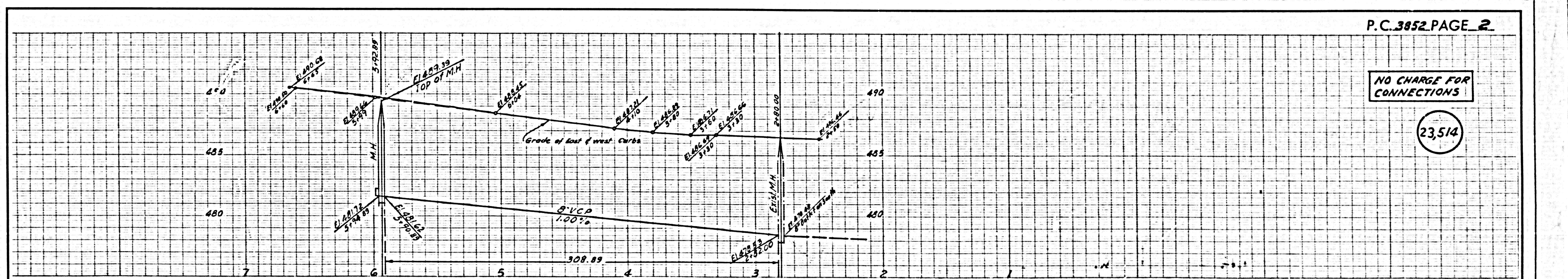
PROFILE ALIGNMENT AND GRADE OF P.C. 3852
SANITARY SEWERS PAGE 1
TO BE CONSTRUCTED IN
TRACT N° 17284 (23,513)
(2)

PRIVATE CONTRACT NO. 3852
W.S. 47
ONE SHEET, 2 PAGES
SCALE: 1" = 6' HORIZ. 1" = 6' VERT. JANUARY, 1956
PREPARED IN THE OFFICES OF
KARL TUTTLE ENGINEERING CO.
BY: John R. Alford
REG. C. E. NO. 0638
FOR LEGEND SEE PLAN NO. S-A-64

NOTE:
GRADES TO WHICH THIS IMPROVEMENT IS TO BE CONSTRUCTED ARE SHOWN ON PLANS AND PROFILES. GRADE POINTS FOR TOP OF CURB, CENTER LINE OF STREETS, OR CENTER LINE OF ALLEYS ARE SHOWN BY CIRCLES ON PROFILES AT ALL POINTS BETWEEN DESIGNATED POINTS THE GRADE SHALL BE ESTABLISHED SO AS TO CONFORM TO A STRAIGHT LINE DRAWN BETWEEN SAID DESIGNATED POINTS.
ELEVATIONS ARE IN FEET ABOVE U.S.C. & G.S. MEAN SEA LEVEL. DATUM OF 1929.
THE DRAWING AND THE DATA HEREON ARE HEREBY MADE A PART OF THE SPECIFICATIONS.
WORK SHALL BE CONSTRUCTED ACCORDING TO SPECIFICATIONS ON FILE IN THE OFFICE OF THE COUNTY ENGINEER AND SHALL BE PROSECUTED ONLY IN THE PRESENCE OF THE COUNTY ENGINEER.
WHEN WORK CAN BE STARTED, THE CONTRACTOR MUST OBTAIN A PERMIT TO EXCAVATE IN COUNTY STREETS FROM THE COUNTY ENGINEER, ROOM 323 PAVAN AMERICAN BLDG., 333 SO. BROADWAY SUPPLEMENT TO COVER THE COST OF CONSTRUCTION INSPECTION AND RECORD PLANS.
APPROVAL OF THIS PLAN BY THE COUNTY OF LOS ANGELES DOES NOT CONSTITUTE A REPRESENTATION AS TO THE ACCURACY OF THE LOCATION OF OR THE EXISTENCE OR NON-EXISTENCE OF ANY UNDERGROUND UTILITY PIPE, OR STRUCTURE WITHIN THE RIGHTS OF THIS PROJECT THIS NOTE APPLIES TO ALL PAGES.
IF WORK IS TO BE DONE IN A STATE HIGHWAY, A PERMIT MUST BE OBTAINED FROM THE STATE OF CALIFORNIA, DIVISION OF HIGHWAYS, 120 SOUTH SPRING STREET.

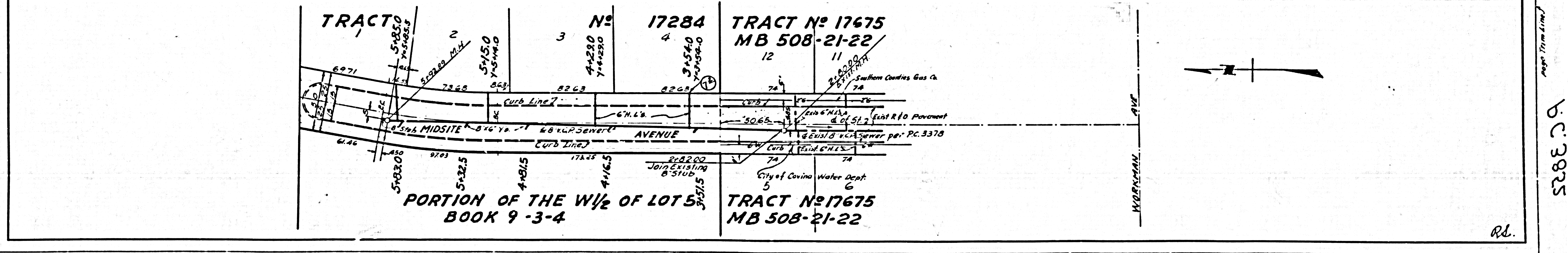
COUNTY OF LOS ANGELES, CALIFORNIA
APPROVED, JOHN A. LAMBE, COUNTY ENGINEER
APPROVED, A. M. RAWLIN, CHIEF ENGINEER
BY: [Signature] SANITATION ENGINEER
BY: [Signature] OFFICE ENGINEER
CHECKED BY: S.K. White 7-17-56
OFFICE OF COUNTY ENGINEER, REG. C. E. NO. 3406

Leaded 10-10-56 W. Green



NO CHARGE FOR CONNECTIONS

23,514



NO CHARGE FOR CONNECTIONS

23,514

TRACT N° 17284

P.C. 3852

PAGE 2

P.C. 3852