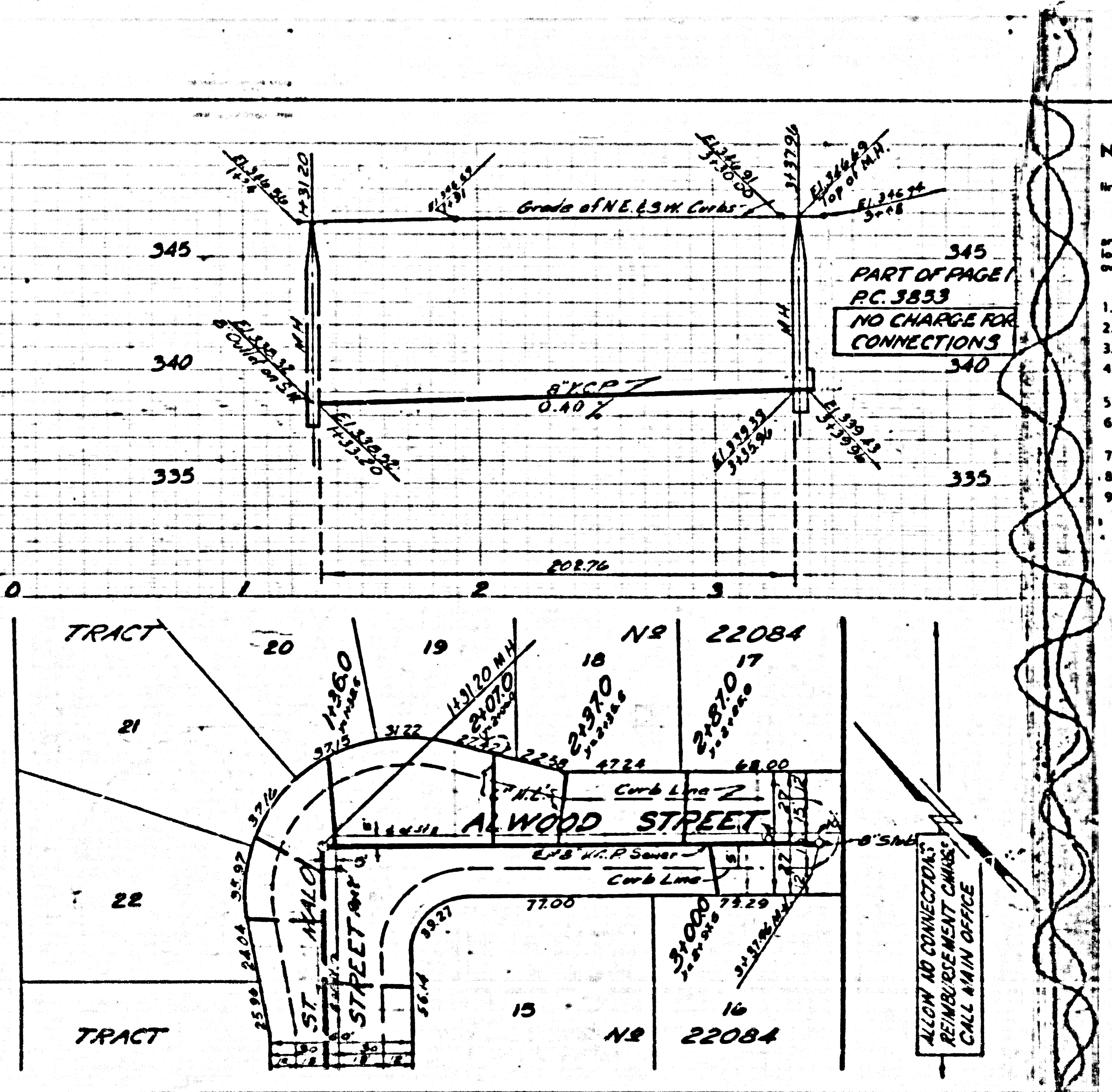


NO CHARGE FOR CONNECTIONS

23,146



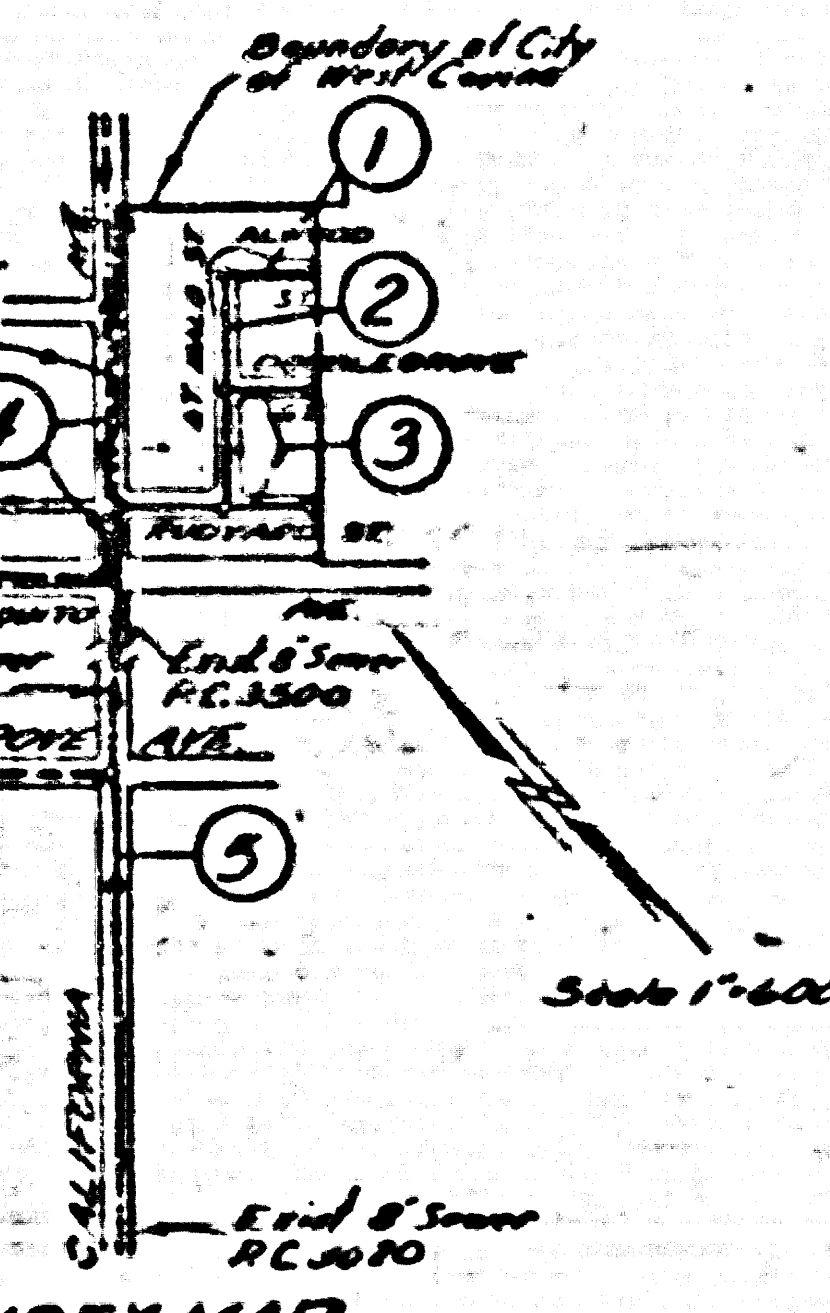
PUENTE BLDG. DIST. NO. 2

- NOTE:**
- Provide stakes on the property lines or property lines produced at right angles to the sewer line at the center line of each manhole.
 - No representative of the County Engineer will survey or layout any portion of the work.
 - The owner or his authorized representative shall furnish the County Engineer with grade sheets and stations for all house laterals and Y branches and shall provide stakes for them at their proper locations with stationing plainly marked. Any change in location shall be requested in writing by the owner or his representative.
 - No revisions shall be made in these plans without the approval of the County Engineer.
 - Use standard manhole frames and covers, S-a-117.
 - Use standard strength pipe except as noted.
 - Use cement mortar for all vitrified clay pipe joints.
 - Resurface all trench within paved area to meet L.A. County Road Dept or California State Highway Dept. requirements in accordance with permit.
 - Excise four feet of sewer at points of interference with poles, S-a-119.
 - House laterals to be constructed with inverts at property line $\frac{1}{2}$ foot below curb grade.
 - All structures shall be brick sewer structures, S-a-104.
 - For allowable leakage test, use Formula No. 1, Spec's, Sec. 51.
 - Private Engineer shall furnish house lateral depth below top of curb or center line of street at property line for each house lateral on the grade sheet.

Sheet	Page
1	1-5

B.M. - ELEV. 343.977
S.G. 395. L & T IN CONCRETE OF
GILBERT HEADWALL AT S.W. CORNER
OF CALIFORNIA AVENUE &
FRANCISQUITO AVENUE.

CONNECTION CHARGES
AS INDICATED
71.795 Business 1-25-56



INDEX MAP
TRACT NO. 22084
PC. 3853

Checked 7-26-56

PROFILE, ALIGNMENT AND GRADE OF
SANITARY SEWERS
TO BE CONSTRUCTED IN
TRACT NO. 22084

23,145

(5)

PRIVATE CONTRACT NO. 3853
W. S. 47
SHEETS - ONE
Scale: VERT. 1" = 4'
HORIZ. 1" = 40'
January - 1955

PREPARED IN THE OFFICES OF
ADAMS & ELLS

FOR LEGEND SEE PLAN NO. S-a-64

NOTE:
Grades to which the improvement is to be constructed are shown on plans and profiles. Grade points for top of curbs, center line of streets, or center line of alleys are shown by circles on profiles. At all points between designated points the grade shall be established so as to conform to a straight line drawn between said designated points.

Elevations are in feet above U.S.C. & G.S. See General Order of 1929.
This drawing and the data hereon are hereby made a part of the specifications.
Work shall be constructed according to specifications on file in the office of the County Engineer and shall be prosecuted only in the presence of the County Engineer.

Before work can be started, the contractor must obtain a permit to excavate in County streets from the L.A. County Road Dept. 108 W. 2nd St. and make a deposit with the County Engineer, Room 210, 220 S. Broadway, sufficient to cover the cost of construction inspection and record plans.

Approval of this plan by the County of Los Angeles does not constitute a representation as to the accuracy of the location of or the existence or non-existence of any underground utility, pipe, or structure within the limits of this project. This note applies to all sheets.

If work is to be done on a State Highway, a permit must be obtained from the State of California, Division of Highways, 120 South Spring Street.

COUNTY OF LOS ANGELES, CALIFORNIA
Approved: John A. Lamb, County Engineer
CHIEF ENGINEER, DIST. NO. 2215

Checked by: J.K. Onda 9-26-56
Office of County Engineer, Dep. C. E. No. 340

TRACT NO. 22084

PC. 3853

No Charge for CONNECTIONS

345

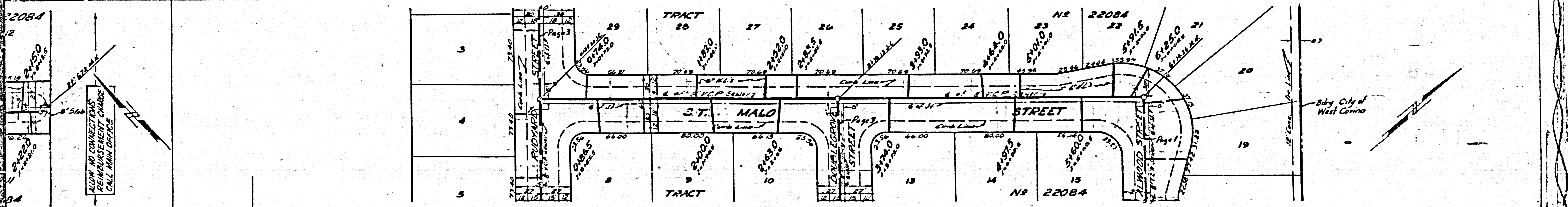
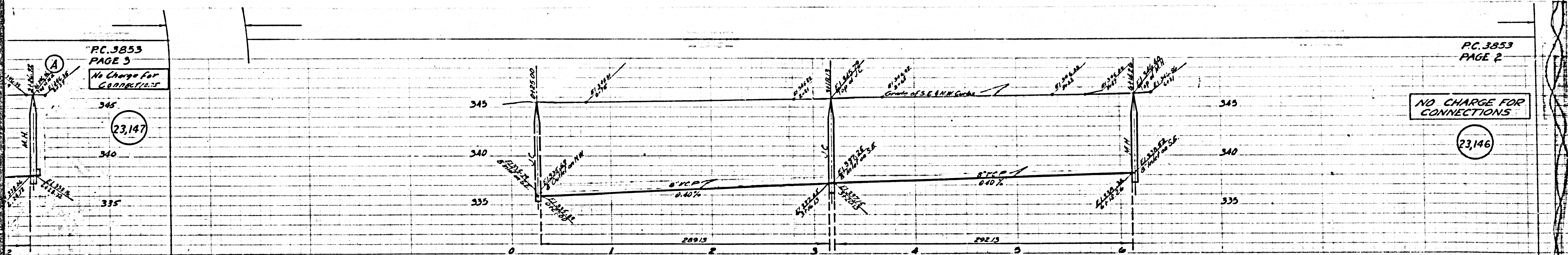
(23,147)

340

335

NO CHARGE FOR CONNECTIONS

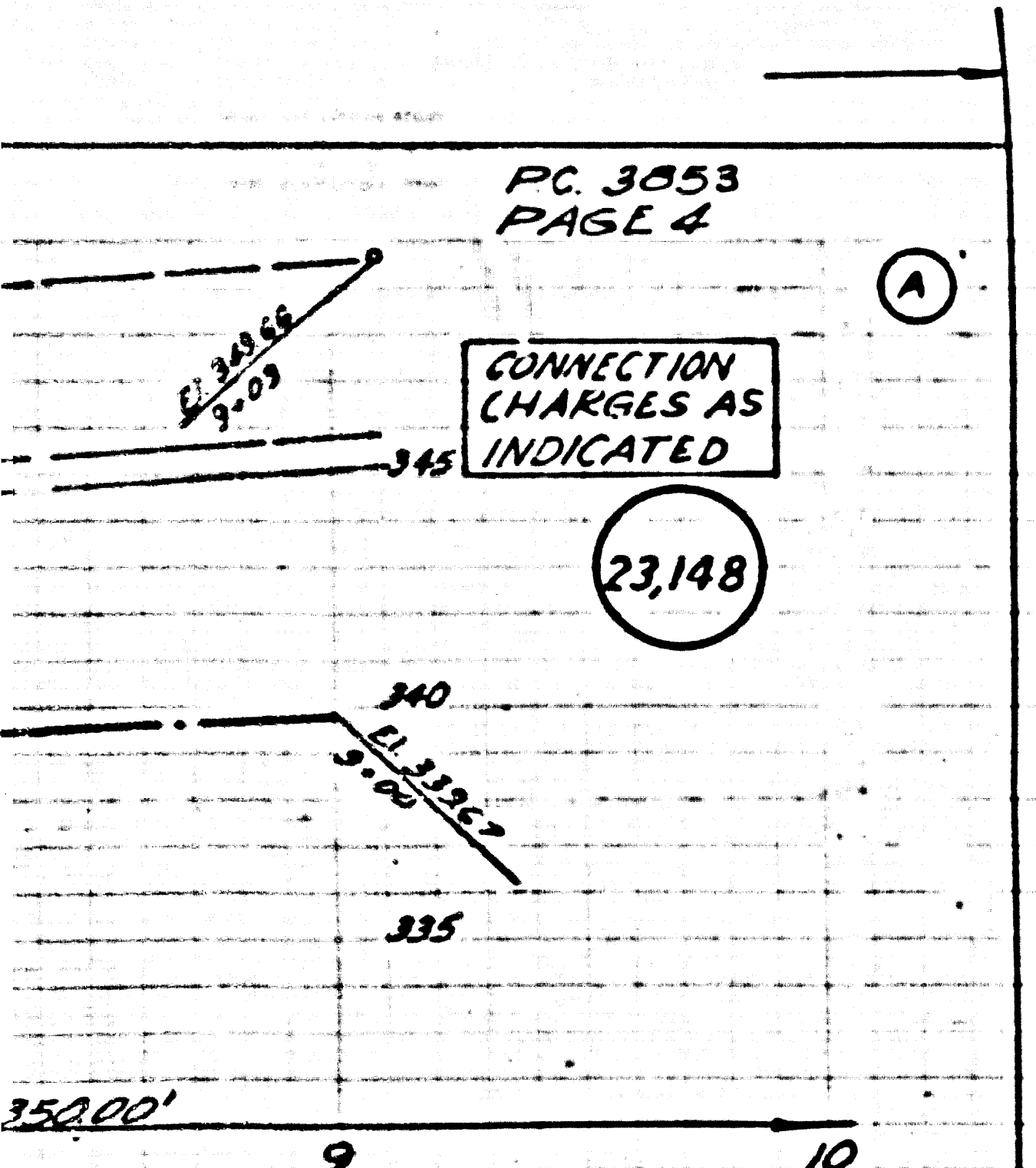
(23,146)



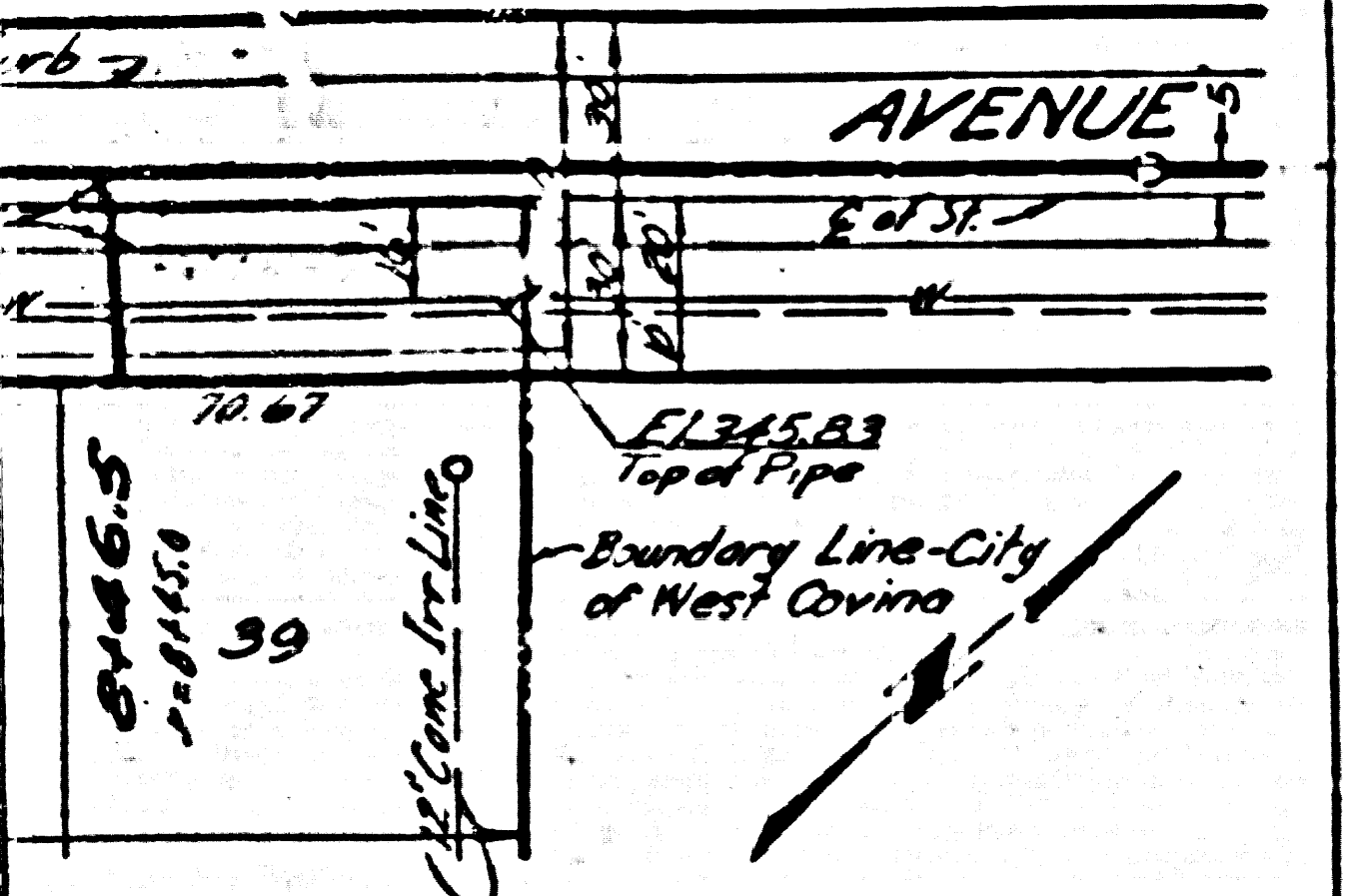
ALLOW NO CONNECTIONS
REIMBURSEMENT CHARGE
CALL MAIN OFFICE

CONNECTION CHARGES AS INDICATED

23,148

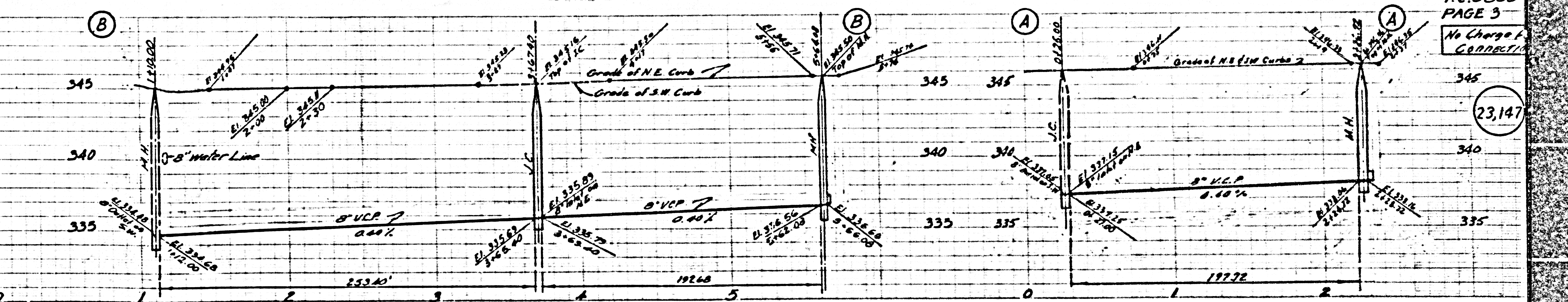


NOTE: CONTRACTOR MUST FIRST OBTAIN HOUSE LATERAL PERMITS FROM CITY OF WEST COVINA BEFORE MAKING ANY CONNECTIONS IN THIS SECTION A-A.

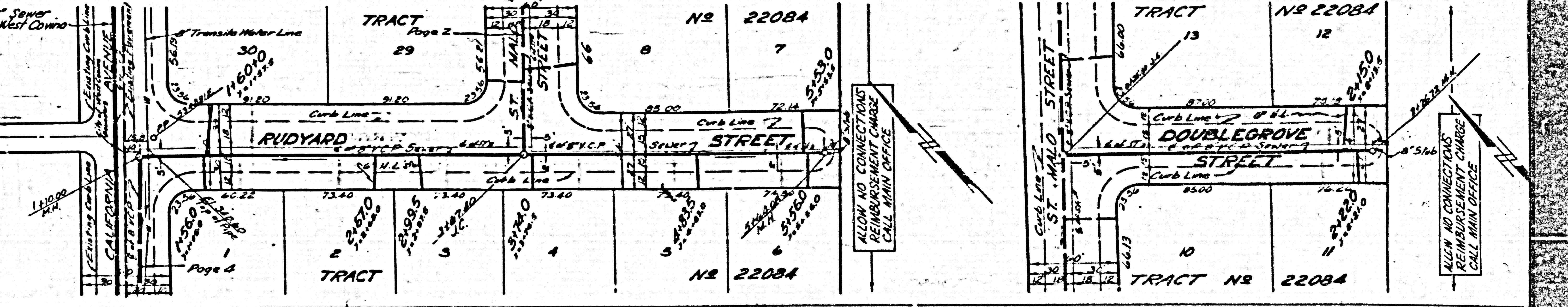


No Charge for Connection

23,147



Exist 12" Sewer City of West Covina



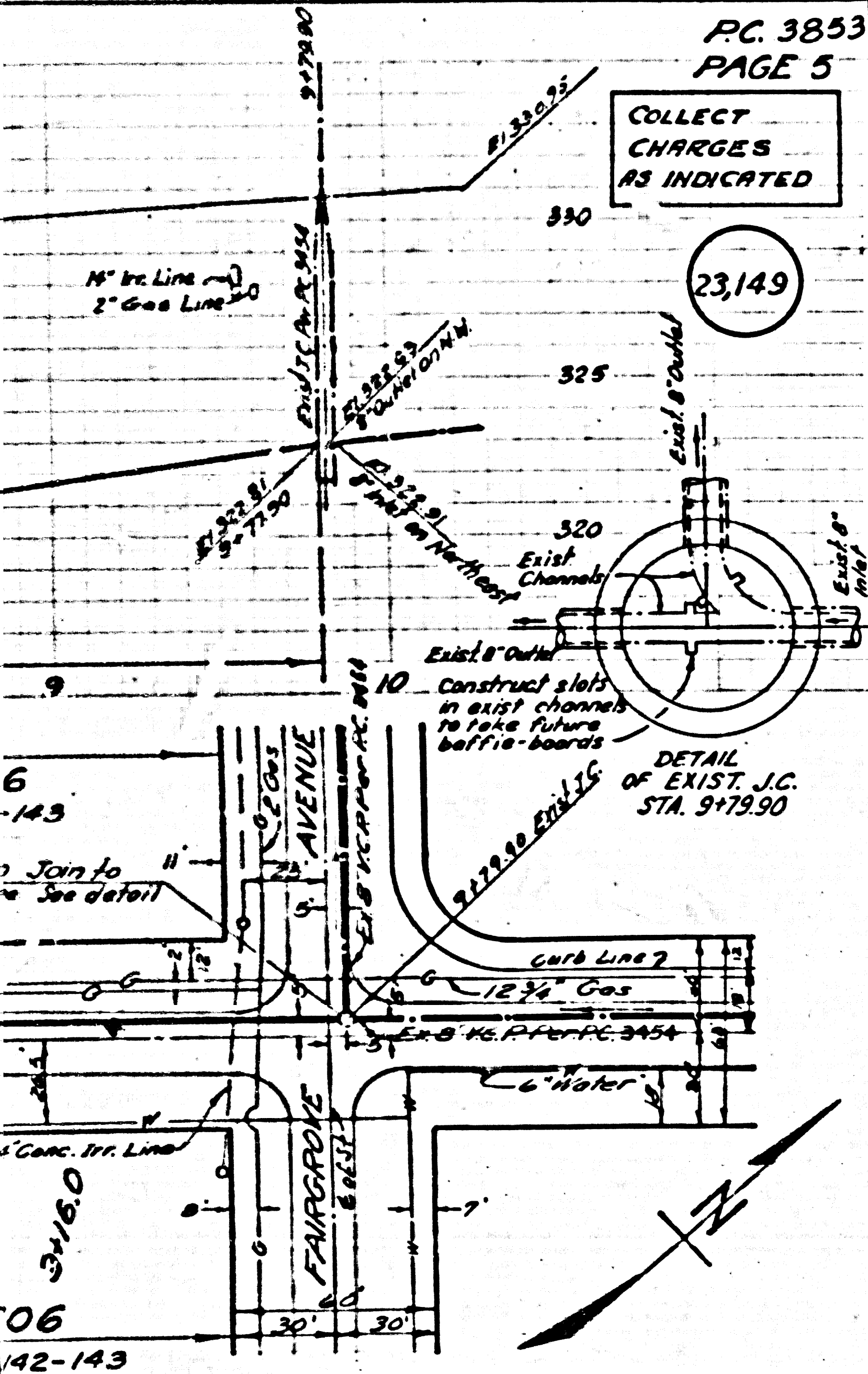
ALLOW NO CONNECTIONS REIMBURSEMENT CHARGE CALL MAIN OFFICE

ALLOW NO CONNECTIONS REIMBURSEMENT CHARGE CALL MAIN OFFICE

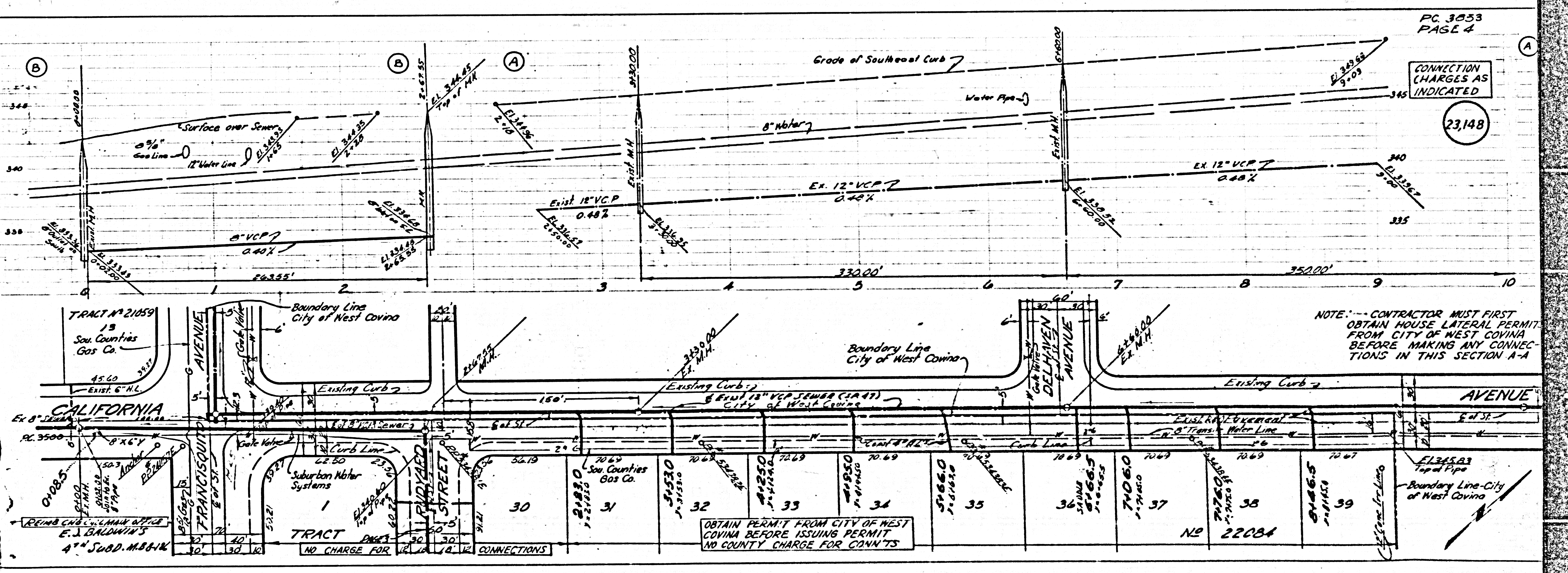
PC 3853
PAGE 5

COLLECT CHARGES AS INDICATED

23,149



42-143



PC 3853
PAGE 4

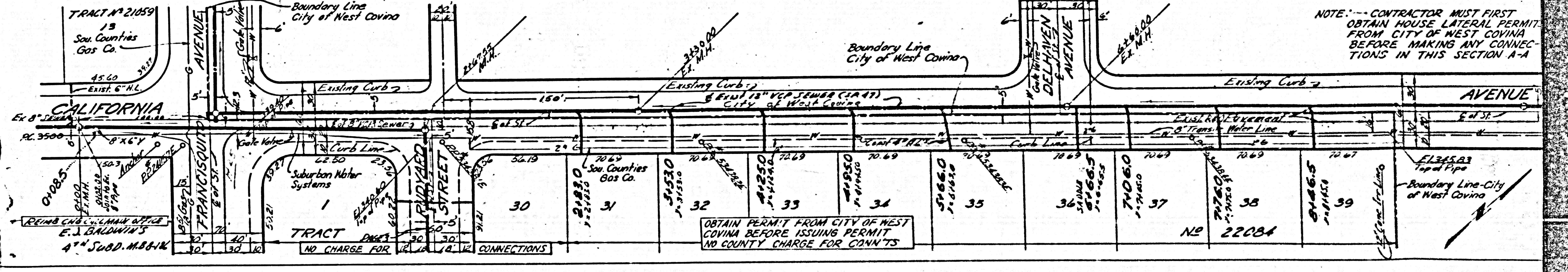
CONNECTION CHARGES AS INDICATED

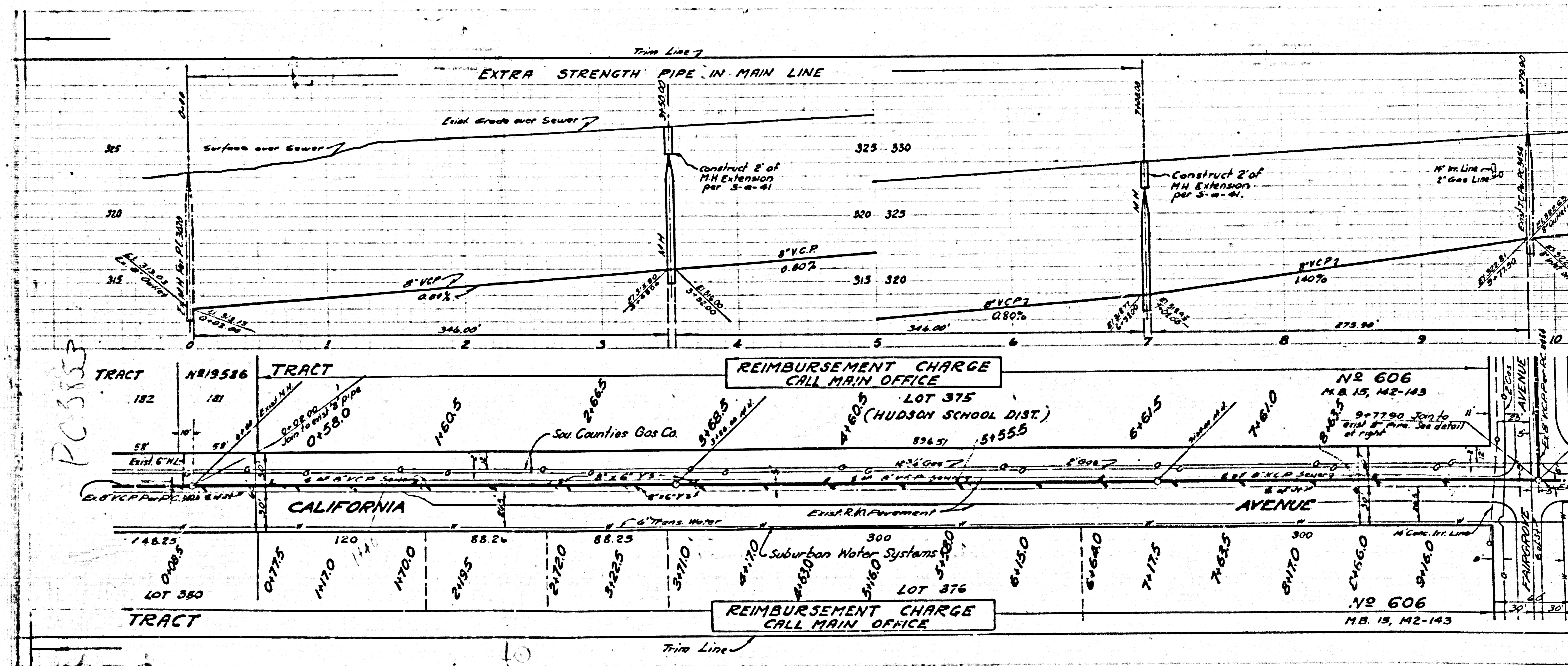
23,148

NOTE: CONTRACTOR MUST FIRST OBTAIN HOUSE LATERAL PERMIT FROM CITY OF WEST COVINA BEFORE MAKING ANY CONNECTIONS IN THIS SECTION A-A

OBTAIN PERMIT FROM CITY OF WEST COVINA BEFORE ISSUING PERMIT NO COUNTY CHARGE FOR CONN'TS

NO CHARGE FOR CONNECTIONS





POSS

REIMBURSEMENT CHARGE
CALL MAIN OFFICE

LOT 375
(HUDSON SCHOOL DIST.)
836.57 5155.5

NO 606
M.B. 15, 142-143
9-7790 Jct to 11
Dist. of Pipe. See detail
of right

CALIFORNIA

REIMBURSEMENT CHARGE
CALL MAIN OFFICE

NO 606
M.B. 15, 142-143

Suburban Water Systems
LOT 376
5160 5160